



**RADIAL CEMENT BOND
GAMMA RAY
CCL**

Company KERR McGEE OIL AND GAS
Well USA 24-36
Field WATTENBERG
County WELD State CO

Company KERR McGEE OIL AND GAS
Well USA 24-36
Field WATTENBERG
County WELD
State CO

Location: API # : 05-123-25258
SE/NE
2082' FNL 721' FEL
Other Services
Permanent Datum GL Elevation 4954
Log Measured From KB 14'
Drilling Measured From KB
SEC 36 TWP 3N RGE 66W

Date 11-14-3013

Run Number 1
Depth Driller 8060
Depth Logger 4342
Bottom Logged Interval 4339
Top Log Interval SURFACE
Open Hole Size 7.875
Type Fluid WATER
Density / Viscosity 1.0
Max. Recorded Temp. 158
Estimated Cement Top 162
Time Well Ready N/A
Time Logger on Bottom N/A
Equipment Number 4310
Location GREELEY
Recorded By N. BREHMER
Witnessed By J. CHANDLER

Borehole Record
Run Number Bit From To Size Weight From To
ONE
TWO

Casing Record
Surface String Size 8.63 Wgt/Ft 24# Top 14' Bottom 859
Prot. String
Production String 4.5 11.6 14' 8038
Liner

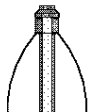
<<< Fold Here >>>

All interpretations are opinions based on inferences from electrical or other measurements and we cannot and do not guarantee the accuracy or correctness of any interpretation, and we shall not, except in the case of gross or willful negligence on our part, be liable or responsible for any loss, costs, damages, or expenses incurred or sustained by anyone resulting from any interpretation made by any of our officers, agents or employees. These interpretations are also subject to our general terms and conditions set out in our current Price Schedule.

Comments

RAN CBL TO VERIFY CEMENT BOND

THANK YOU FOR USING WARRIOR !!!!!!!

Sensor	Offset (ft)	Schematic	Description	Len (ft)	OD (in)	Wt (lb)
						

			PTS275	2.83	2.75	
HEADVOLT	16.13					
IntTemp	14.71					
WVF3FT	11.46		RBT-Probe (Base)	8.92	2.75	90.00
WVFCAL	11.46		Probe Radii Bond Tool with Digital Telemetry			
WVFS1	11.46					
WVFS2	11.46					
WVFS3	11.46					
WVFS4	11.46					
WVFS5	11.46					
WVFS6	11.46					
WVFS7	11.46					
WVFS8	11.46					
WVF5FT	10.46					
CNLSC	6.00		CNT-Probe_B (275)	2.88	2.75	40.00
CNSSC	5.17		6 bow centralizer			
CCL	3.64					
			GR-Probe (275)	4.33	2.75	30.00
			Probe 2.75"			
GR	0.90					
Dataset: usa 24-36.db: field/well/run1/pass2 Total Length: 18.96 ft Total Weight: 160.00 lb O.D. 2.75 in						

-9	CCL	1	200	TT (usec)	850	0	AMP (mV)	100	0	AMPS1	100	200	VDL	1200	1	Cement Map	8
LSPD			0	GR (GAPI)	200	0	AMPx5 (mV)	20	0	AMPS2	100				1		100
(ft/min)			200	GR (GAPI)	400				0	AMPS4	100						
0		250							0	AMPS5	100						
									0	AMPS6	100						
									0	AMPS7	100						
									0	AMPS8	100						
										IntTemp							
										(degF)							



TOP OF CEMENT

200

113.844

250

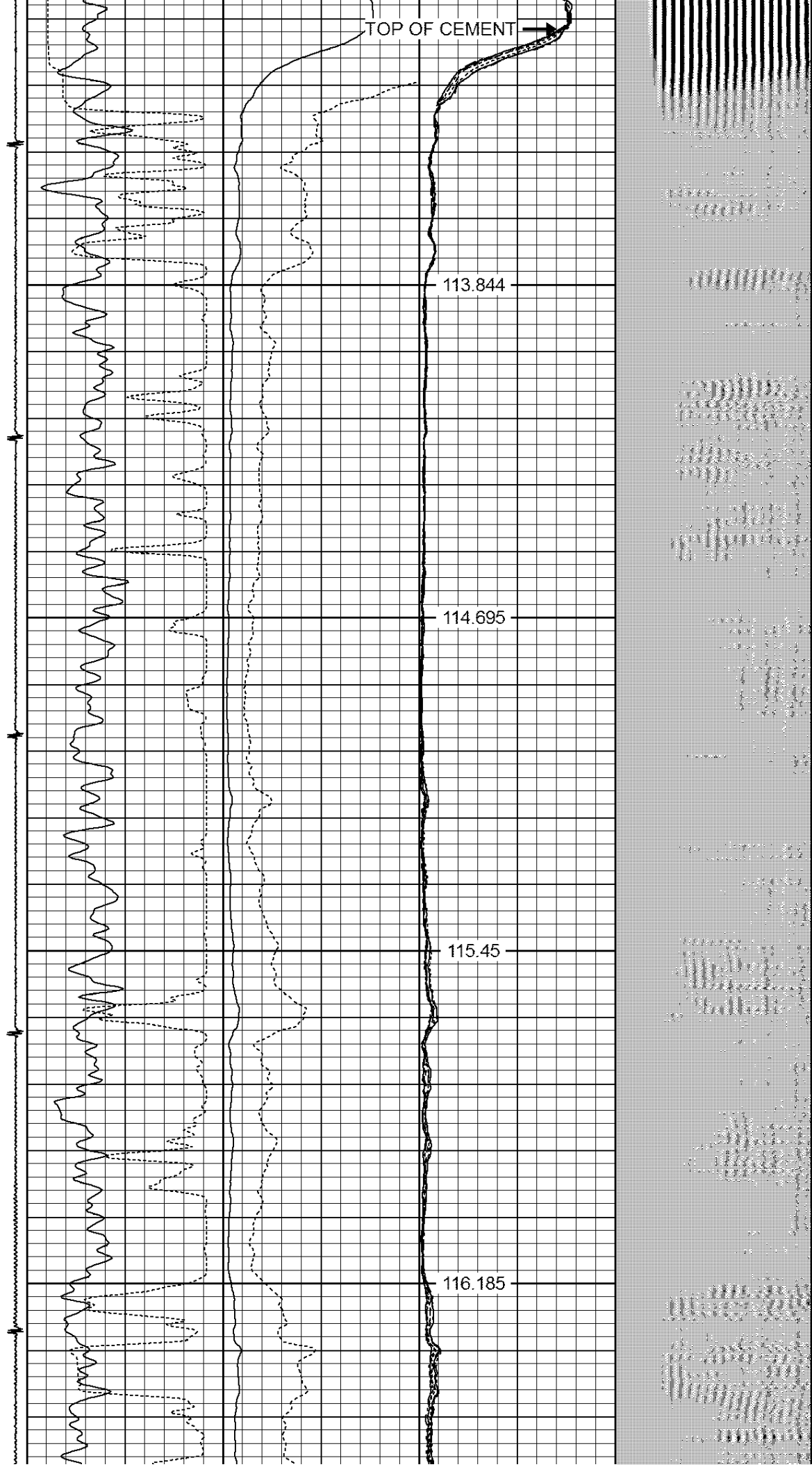
114.695

300

115.45

350

116.185



400

117.156

450

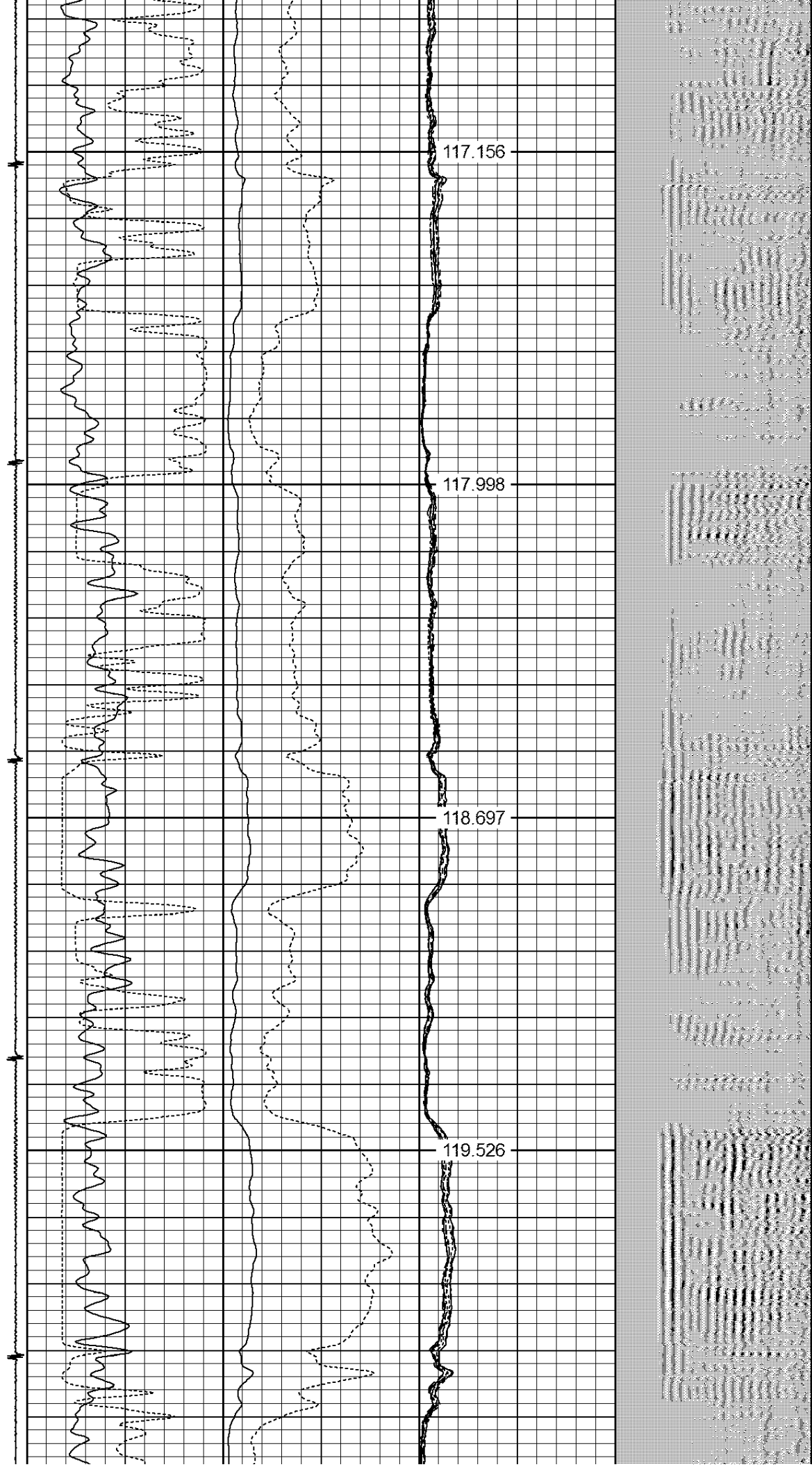
117.998

500

118.697

550

119.526



600

120.41

650

121.21

700

122.098

750

122.946

800

123.78



850

124.028

900

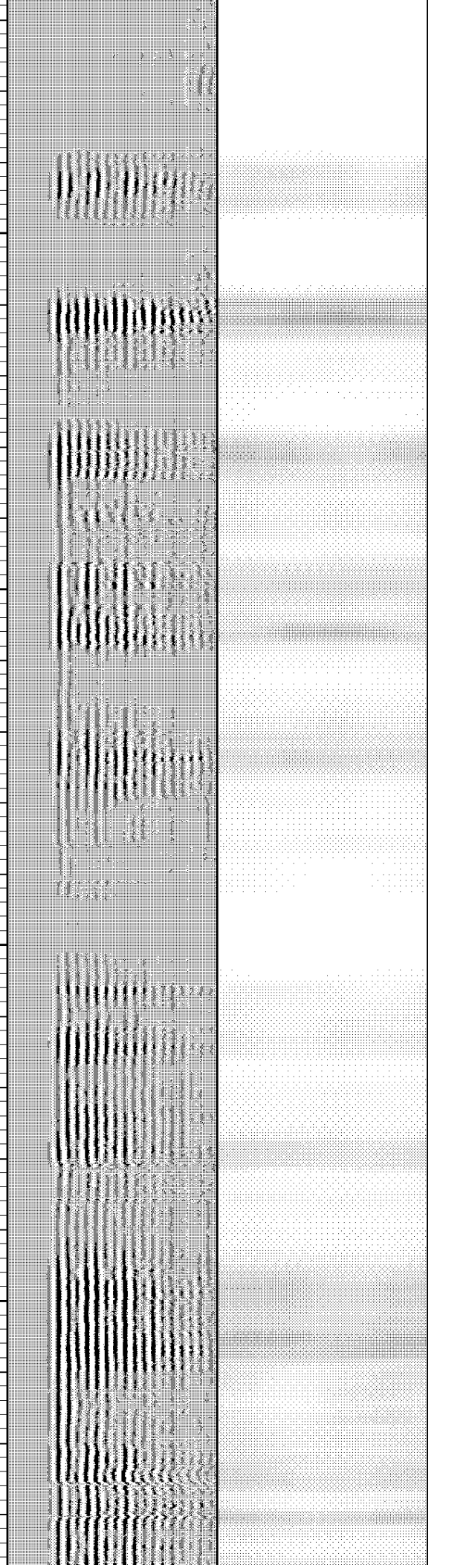
124.405

950

125.077

1000

125.97



1050

126.91

1100

127.831

1150

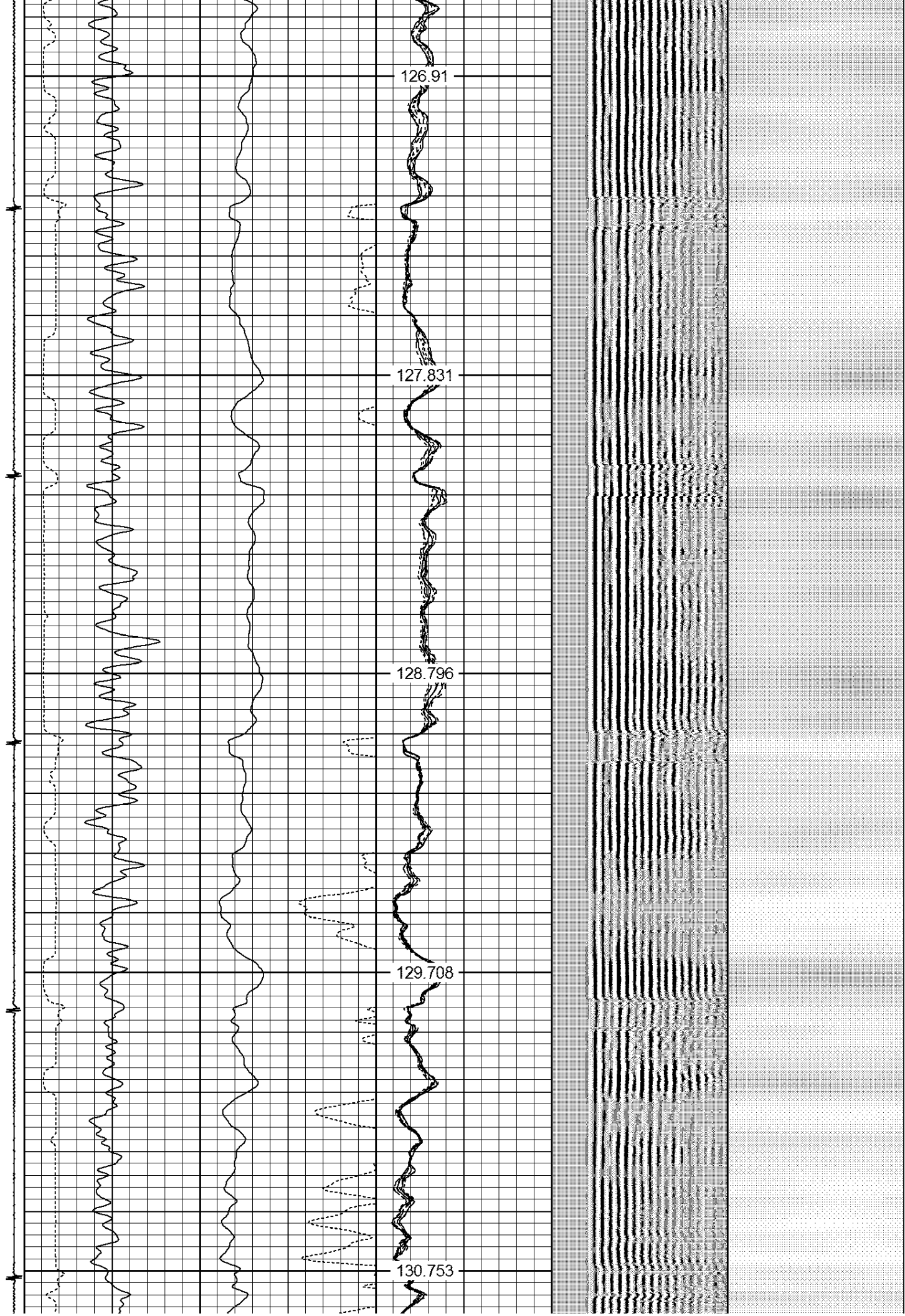
128.796

1200

129.708

1250

130.753



1300

1350

1400

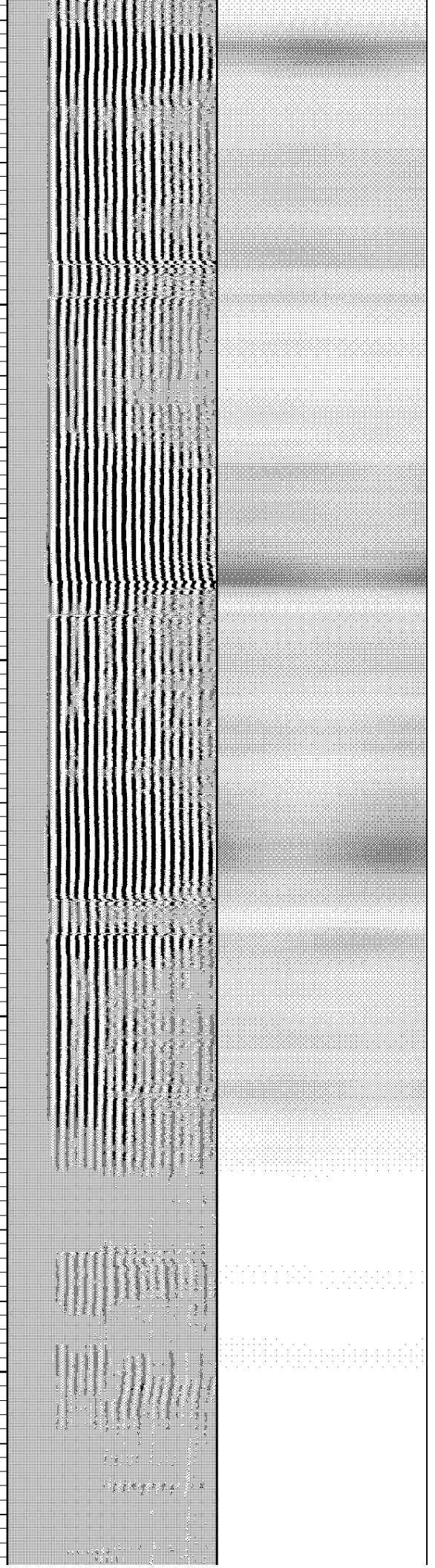
1450

131.559

132.344

133.336

134.283



1500

135.131

1550

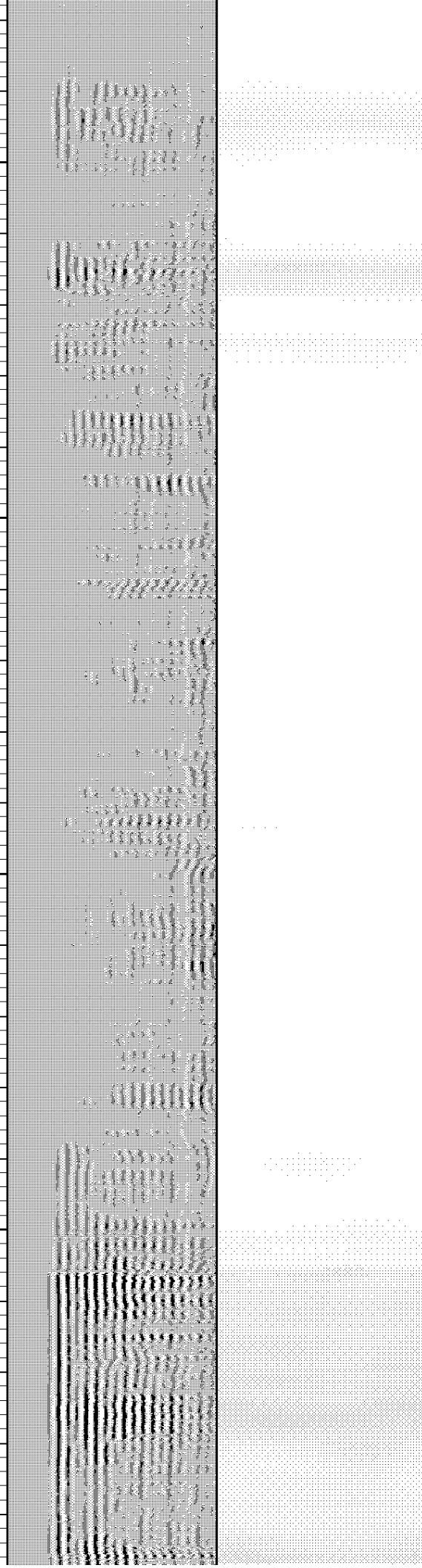
135.817

1600

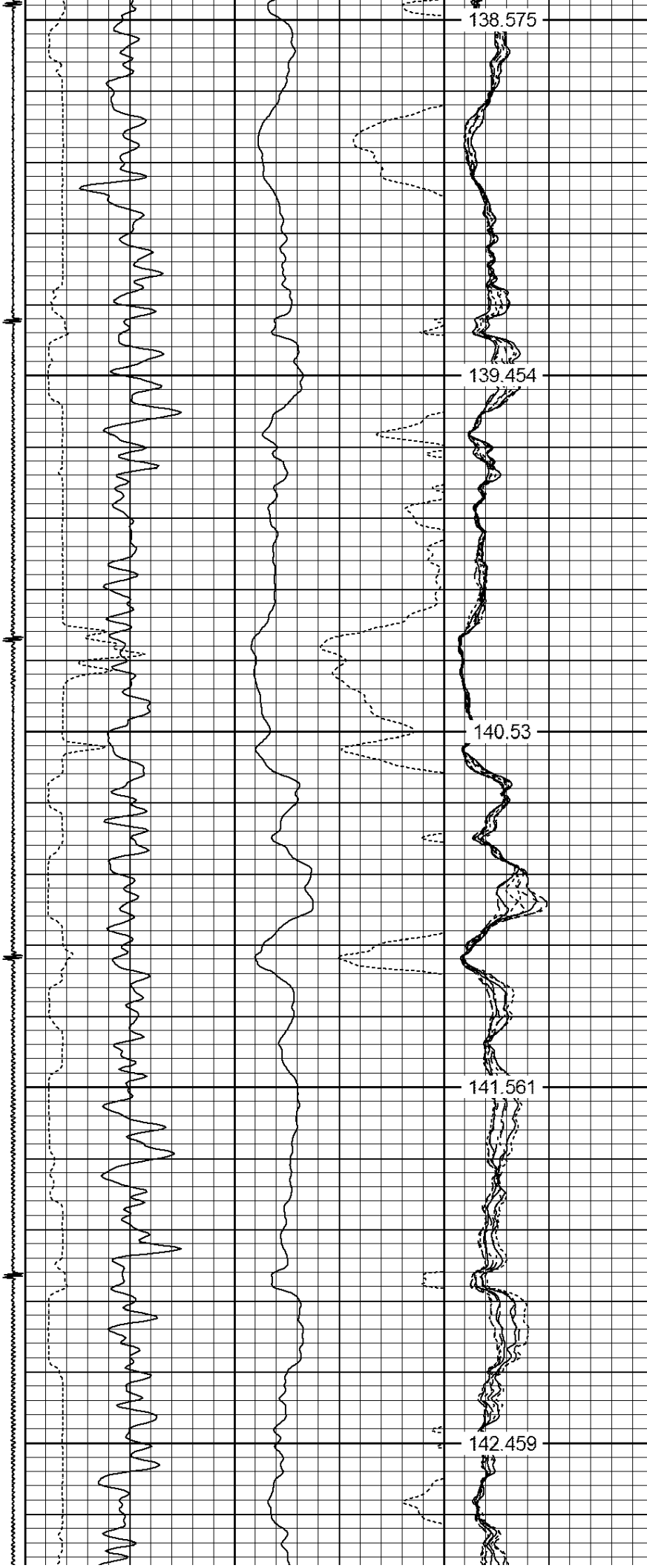
136.733

1650

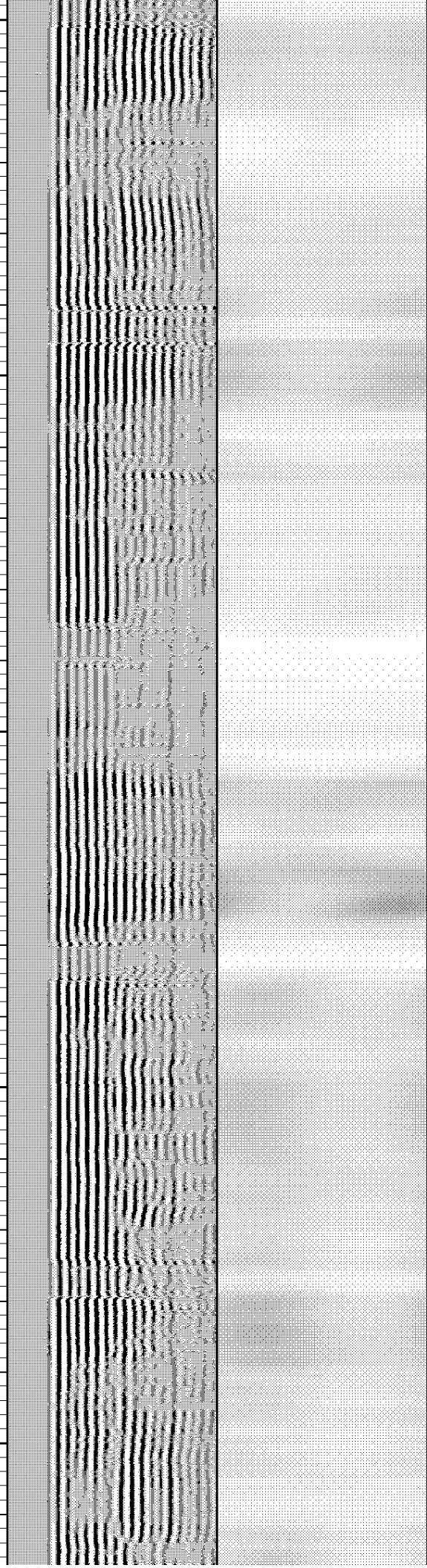
137.698



1700
1750
1800
1850
1900



138.575
139.454
140.53
141.561
142.459



1950

2000

2050

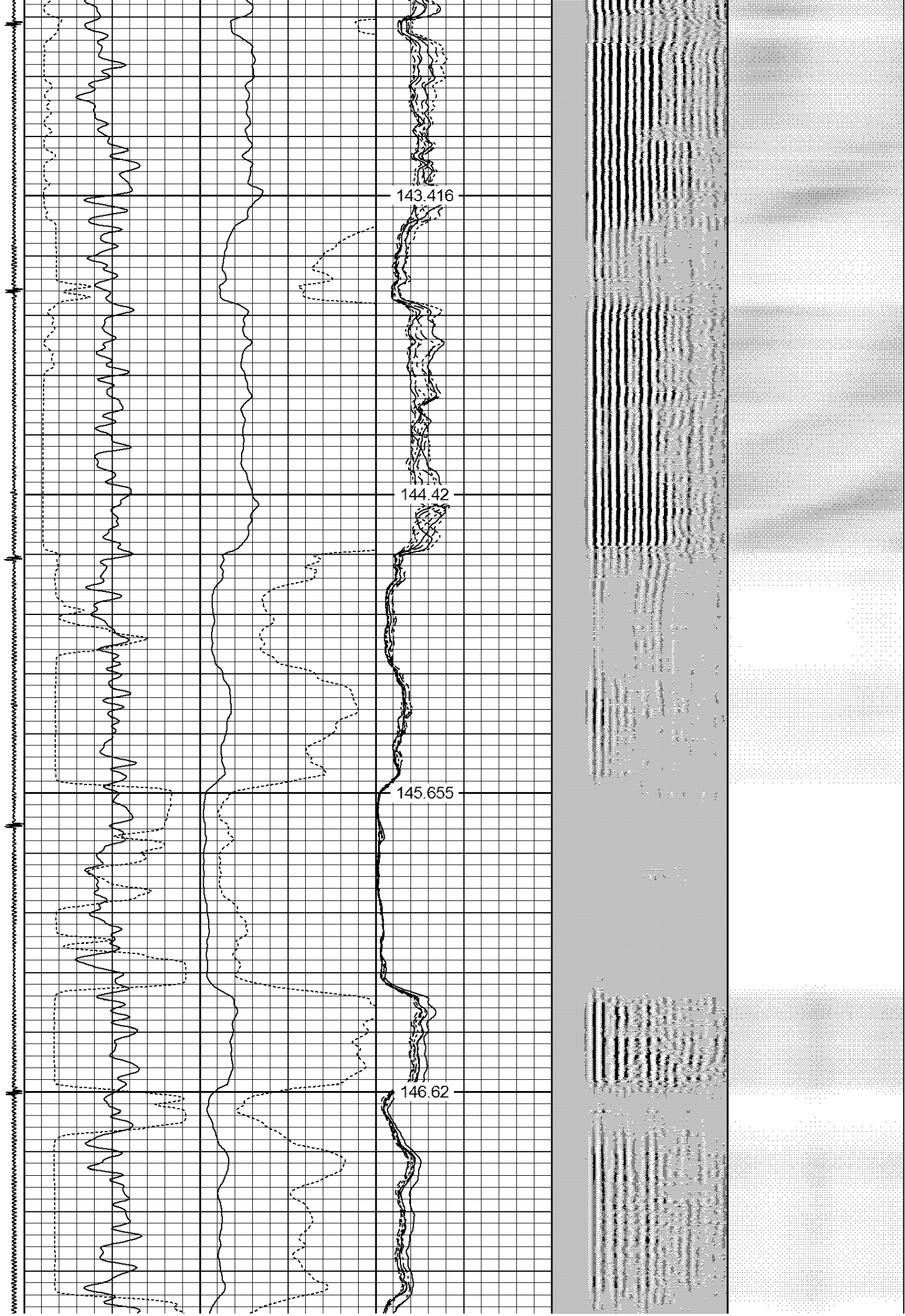
2100

143.416

144.42

145.655

146.62



2150

147.688

2200

148.929

2250

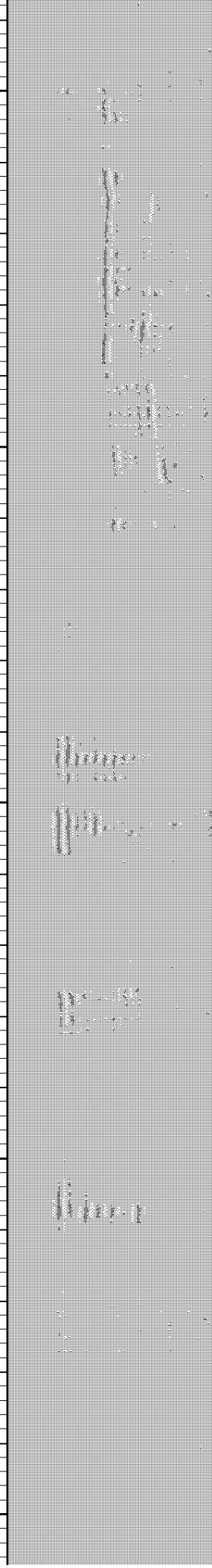
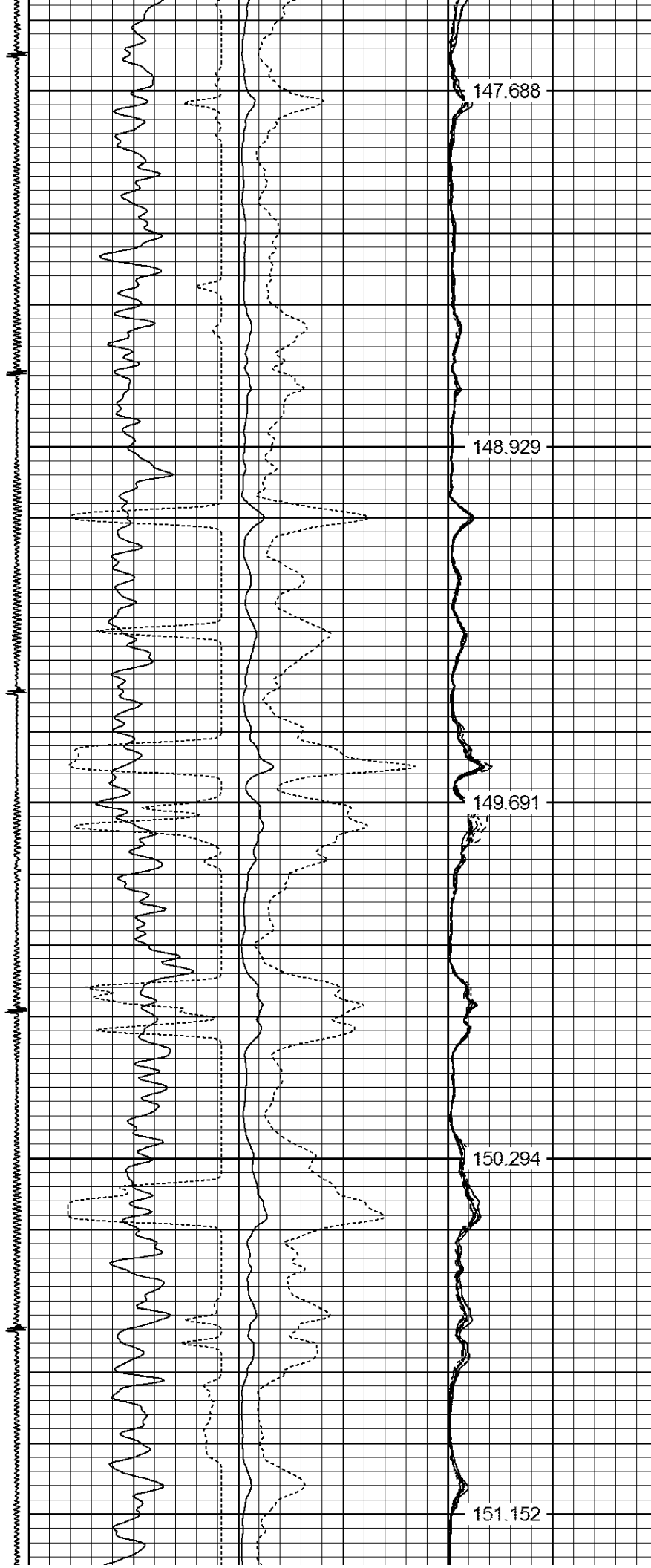
149.691

2300

150.294

2350

151.152



2400

151.891

2450

152.372

2500

152.96

2550

153.545

2600

154.151

2650

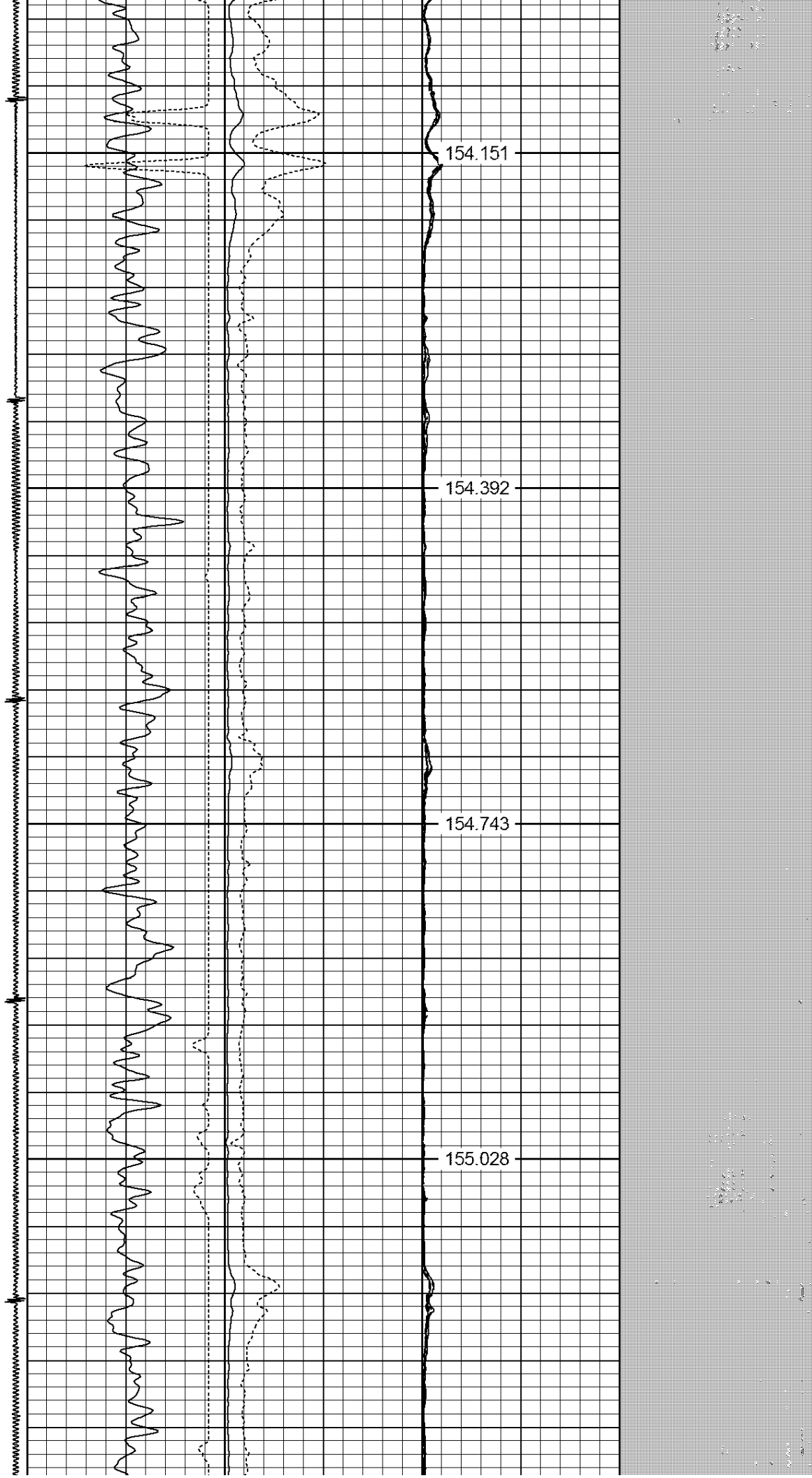
154.392

2700

154.743

2750

155.028



2800

2850

2900

2950

3000

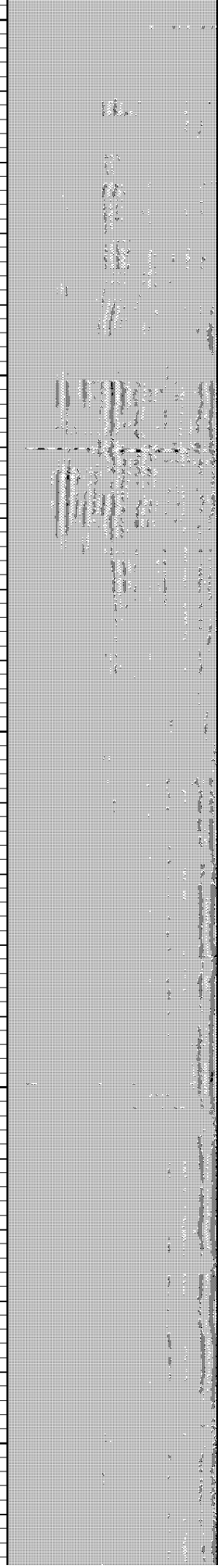
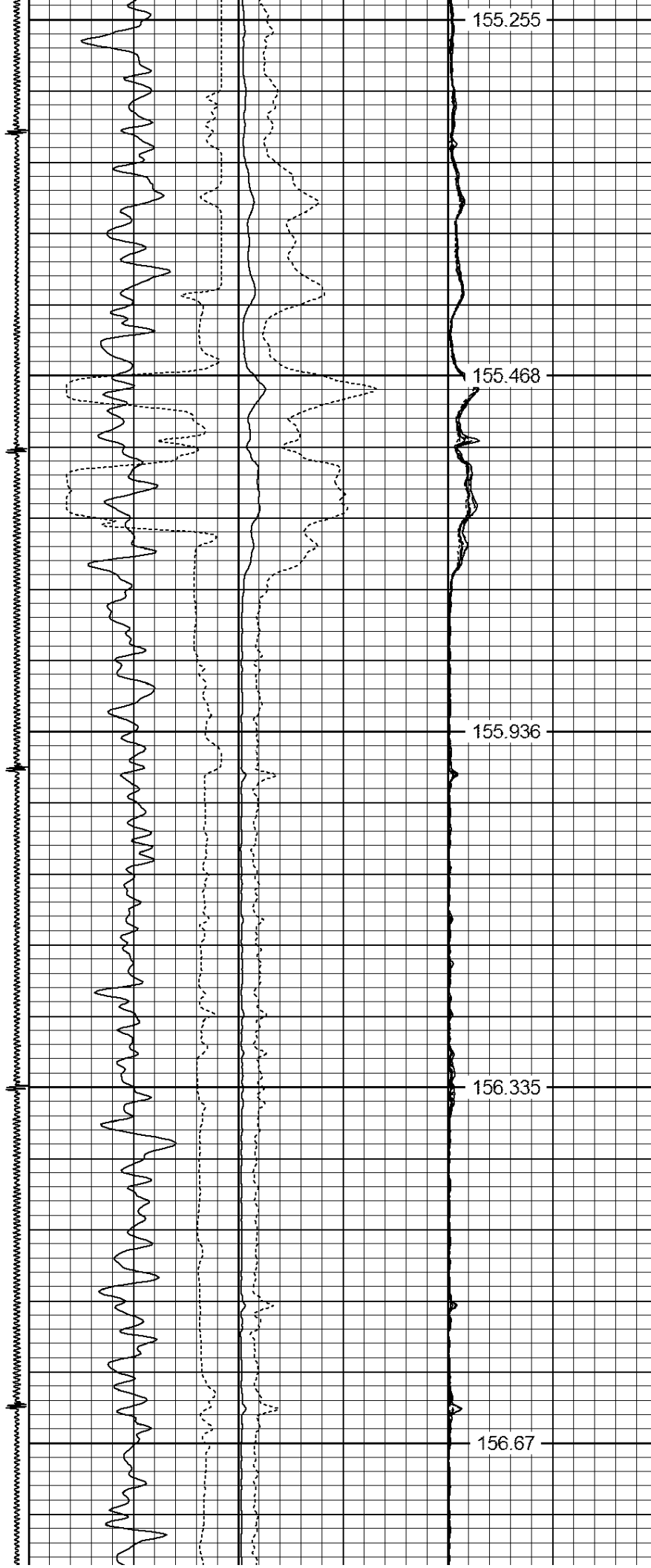
155.255

155.468

155.936

156.335

156.67



3050

156.988

3100

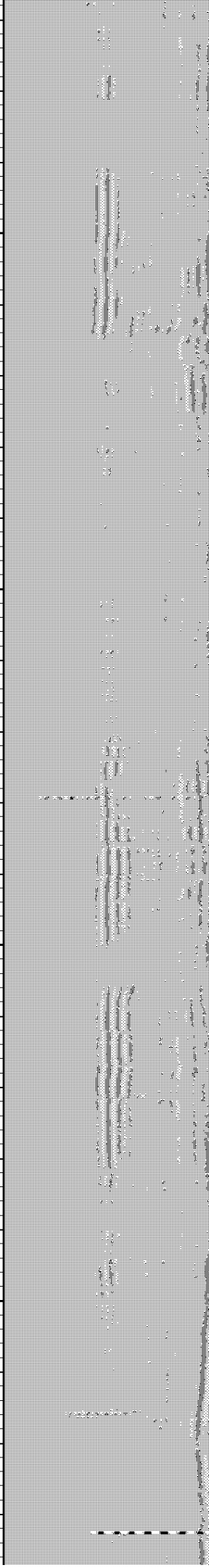
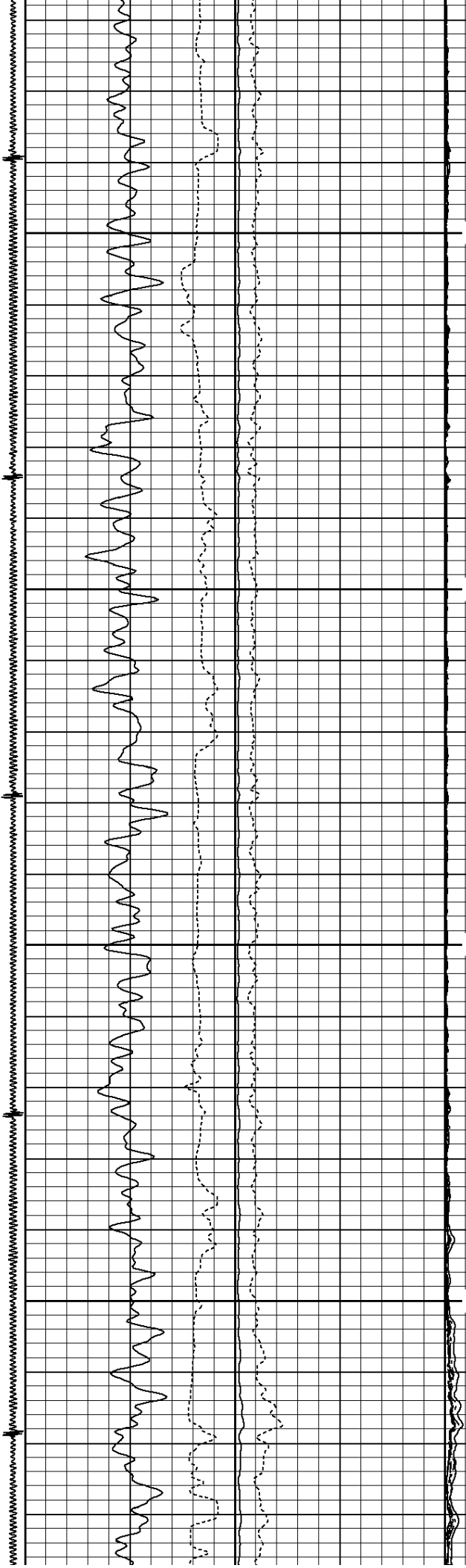
157.206

3150

157.519

3200

157.808



3250

157.943

3300

157.809

3350

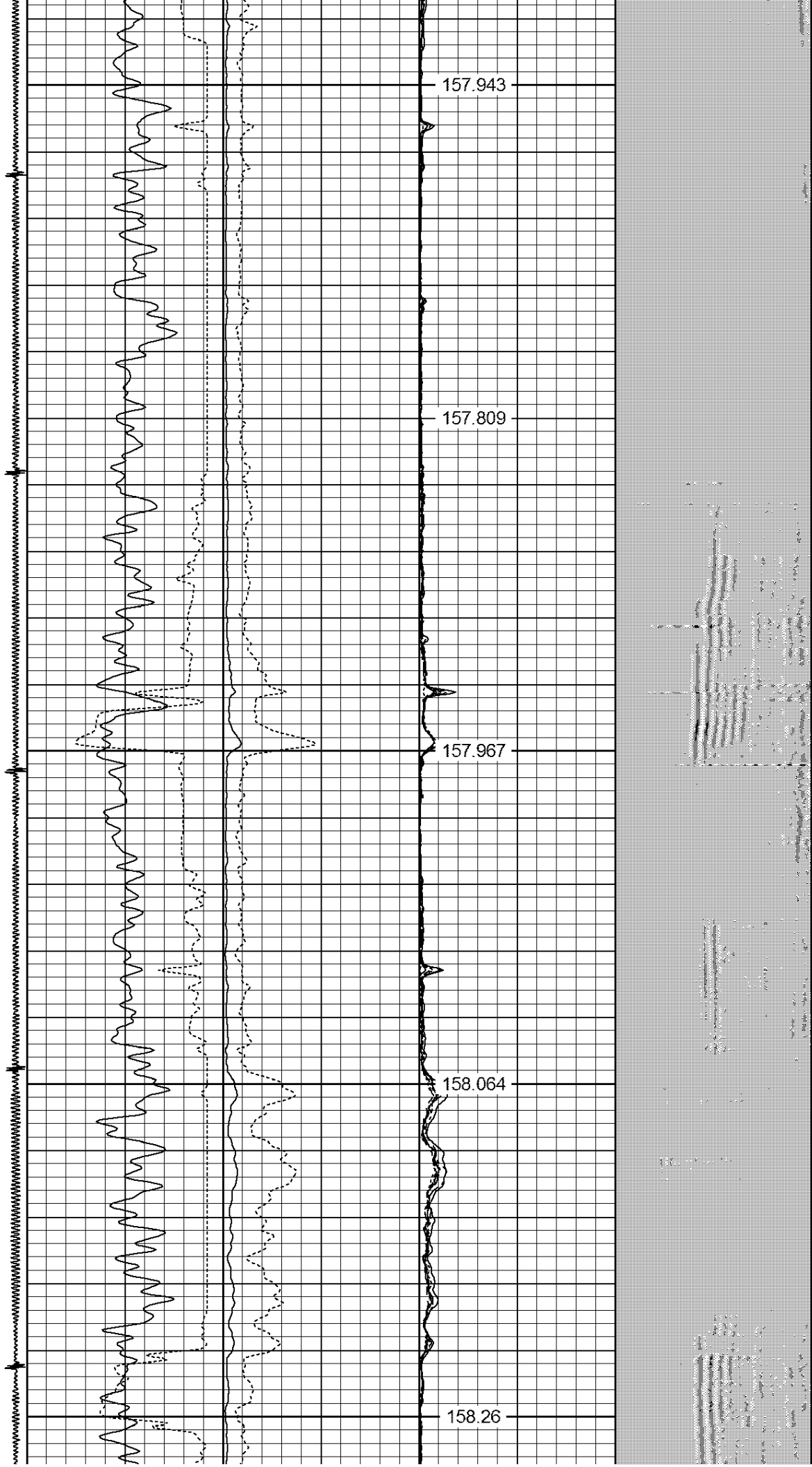
157.967

3400

158.064

3450

158.26



3500

158.248

3550

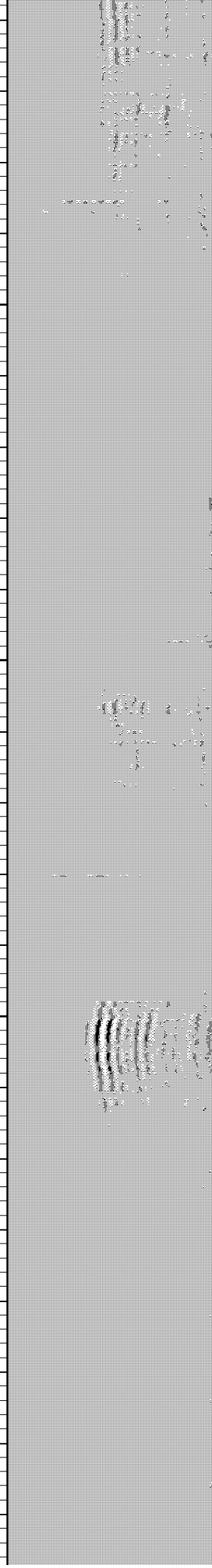
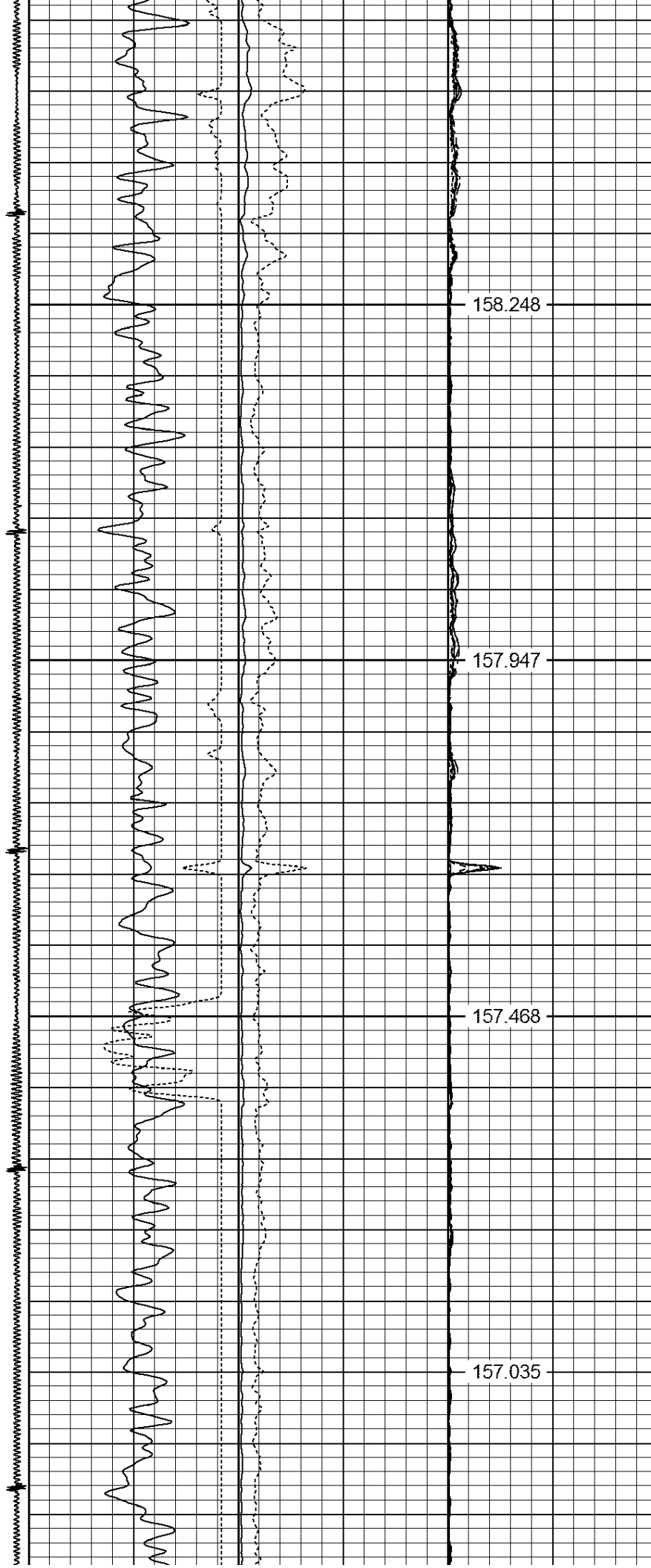
157.947

3600

157.468

3650

157.035



3700

156.432

3750

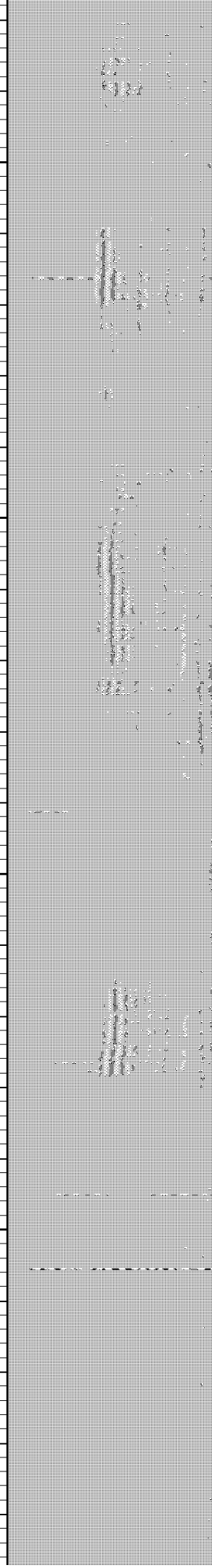
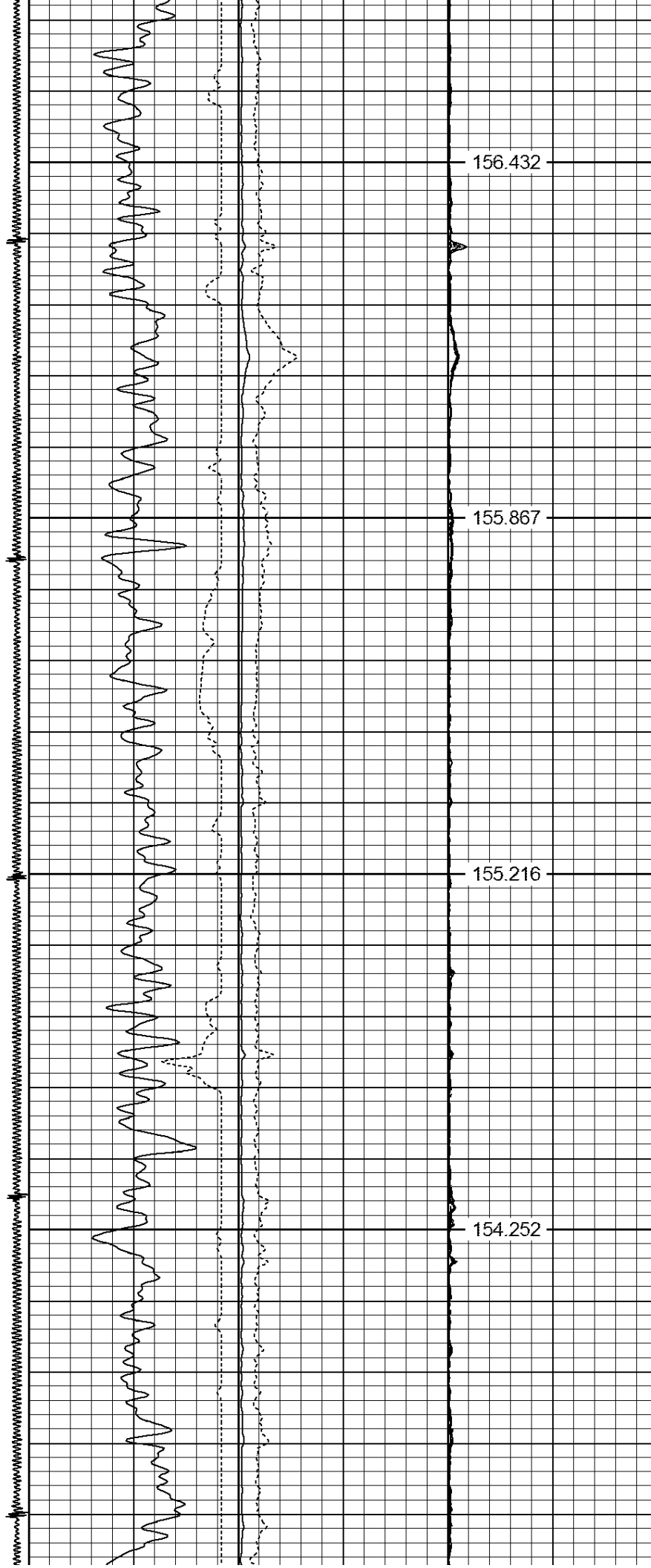
155.867

3800

155.216

3850

154.252



3900

152.504

3950

150.723

4000

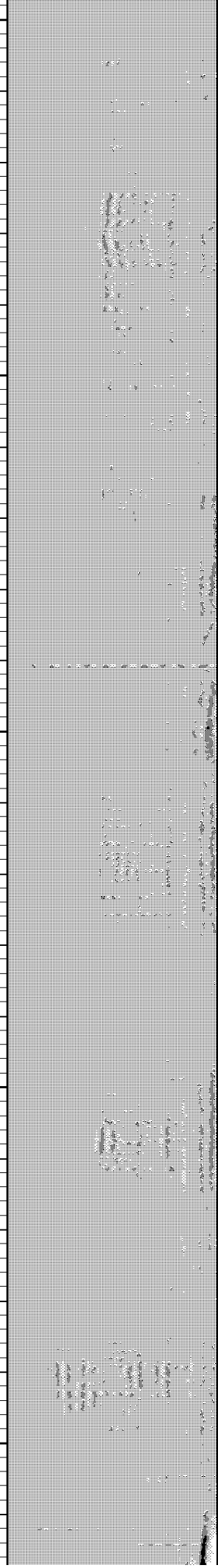
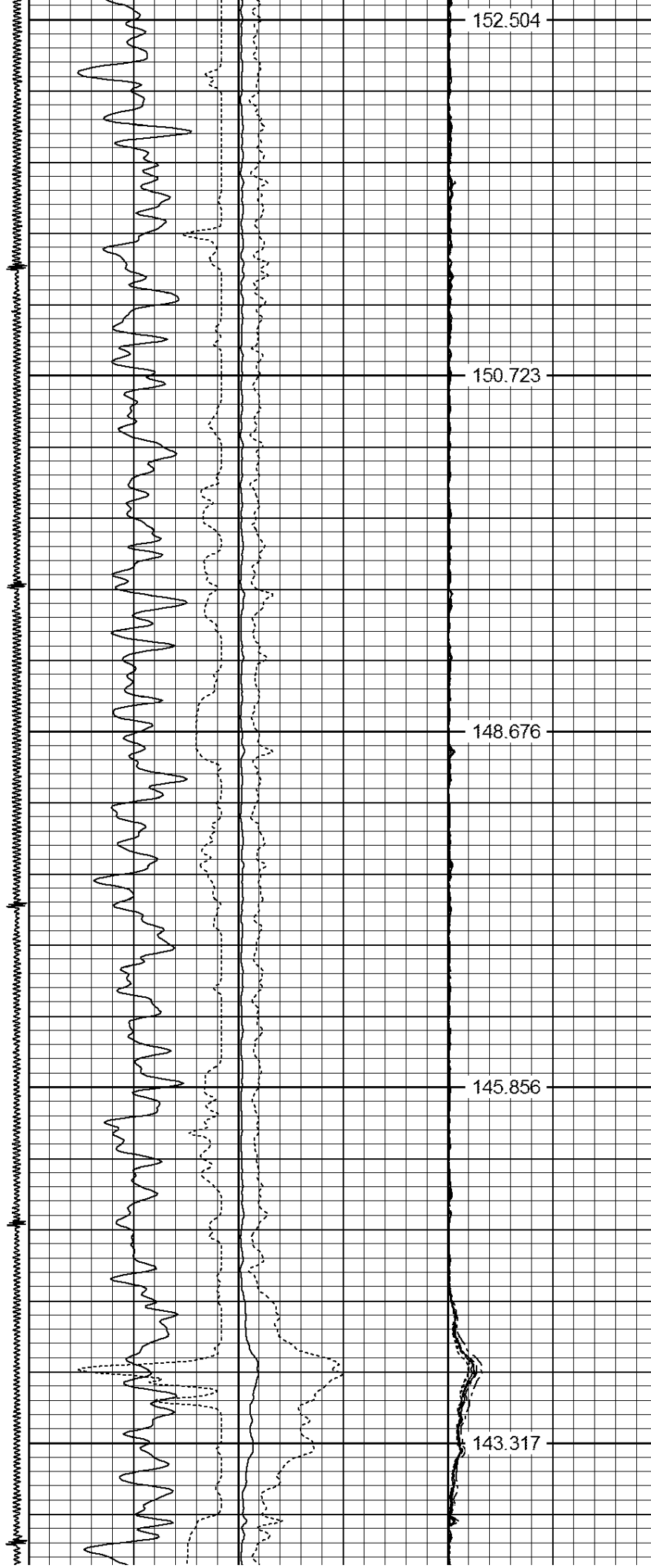
148.676

4050

145.856

4100

143.317



4150

140.596

4200

138.376

4250

136.192

4300
← LSPD

← TT

← GR

← CCL

← GR

133.983

- ← AMPS8
- ← AMPS7
- ← AMPS6
- ← AMPS5
- ← AMPS4
- ← AMPS2
- ← AMPS1

← AMPx5

← AMP

TEMPERATURE

