

1801 Broadway  
Suite 500  
Denver, Colorado 80202



Shannon Hartnett  
Regulatory Compliance Specialist  
Tel: 303.398.0351  
E-mail: shartnett@gwogco.com

November 25, 2013

Colorado Oil and Gas Conservation Commission  
1120 Lincoln Street, Suite 801  
Denver, Colorado 80203

RE: **Proposed Wellbore Spacing Unit**  
Cornish FH 08-399HN

Niobrara New Drill  
Township 6 North, Range 63 West, 6<sup>th</sup> P.M.  
Section 8  
Weld County, Colorado

Dear Director:

Great Western Operating Company, LLC is planning to drill the above captioned well in accordance with the provisions of COGCC Rule 318(l)e(2).

Great Western proposed wellbore spacing unit consists of:

- **S1/2S1/2 Sec. 8-T6N-R63W & N1/2N1/2 Sec 17 T6N-R63W**

The 30 day notification time has passed and we have not received any objections to such well locations or proposed spacing unit, therefore Great Western hereby requests the Director to approve the above mentioned well. Great Western Operating Company, LLC respectfully requests that the COGCC review the enclosed map illustrating the proposed wellbore spacing unit.

Respectfully,



Shannon Hartnett  
Regulatory Compliance Specialist  
Great Western Operating Company, LLC

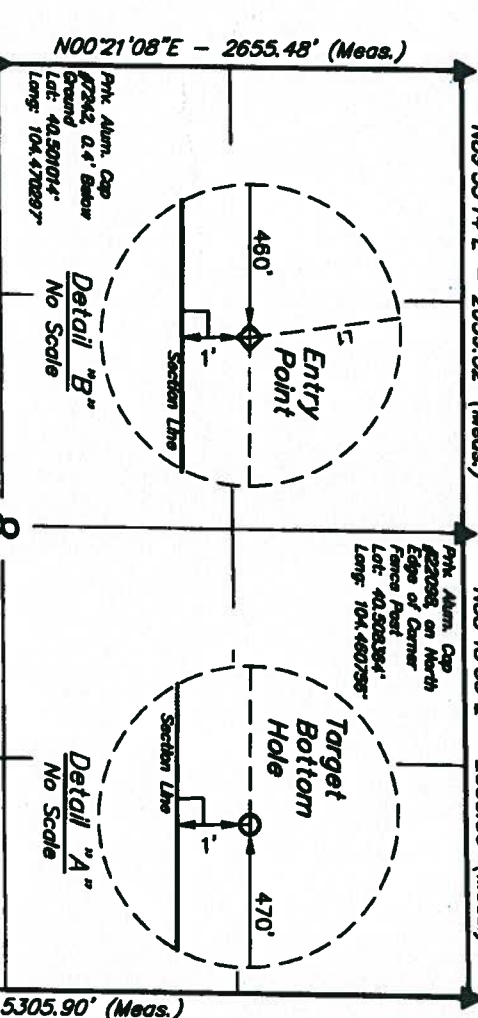
5/25/12 Sec. 2  
11/8/12 Sec. 17

# T6N, R63W, 6th P.M.

Pk. Alum. Cap  
#7242, 0.4' Above  
Ground  
Lat: 40.502823°  
Long: 104.470247°

Pk. Alum. Cap  
#2208, on North  
Edge of Corner  
Fence Post  
Lat: 40.502824°  
Long: 104.460798°

Pk. Alum. Cap  
#2003, 0.5' Below  
Ground  
Lat: 40.502823°  
Long: 104.470225°



**GREAT WESTERN OIL & GAS COMPANY**

Well location, CORNISH FH 08-399HN, located as shown in the NW 1/4 SW 1/4 of Section 8, T6N, R63W, 6th P.M., Weld County, Colorado.

## BASIS OF ELEVATION

USGS COOPERATIVE BASE NETWORK CONTROL STATION, DESIGNATION 'M414'. NGS DATA SHEET LISTS THE NAVD 88 ELEVATION AS BEING 4600.58 FEET

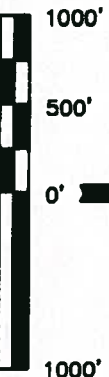
## BASIS OF BEARINGS

BASIS OF BEARINGS IS A G.P.S. OBSERVATION.

## LEGEND:

- = 90° SYMBOL
- ◆ = PROPOSED WELL HEAD.
- ◇ = PROPOSED ENTRY POINT.
- = PROPOSED TARGET BOTTOM HOLE.
- ▲ = SECTION CORNERS LOCATED.

LINE TABLE		
LINE	DIRECTION	LENGTH
L1	S101°08'E	1348.58'



SCALE

THIS IS TO CERTIFY THAT THE ABOVE CORNER PLACEMENTS, FIELD NOTES OF ACTUAL SURVEY, AND ALL OTHER INFORMATION SUPERSEDED AND THAT THE SAME IS TRUE AND CORRECT TO THE BEST OF MY KNOWLEDGE AND BELIEF.



**UTAH ENGINEERING & LAND SURVEYING**  
86 SOUTH 200 EAST - VERNAL, UTAH 84078  
(435) 789-1017

SCALE 1" = 1000'

DATE SURVEYED:	DATE DRAWN:
10-11-13	10-25-13

PARTY Z.B. A.G. J.W.

REFERENCES G.L.O. PLAT

WEATHER COOL

FILE GREAT WESTERN OIL & GAS COMPANY

NAVD 83 TARGET BOTTOM HOLE	NAVD 83 ENTRY POINT	NAVD 83 SURFACE LOC. (TOP)
LATITUDE = 40°28'38.18" (40.483339)	LATITUDE = 40°28'37.48" (40.483744)	LATITUDE = 40°28'30.67" (40.487388)
LONGITUDE = 104°27'11.32" (104.453144)	LONGITUDE = 104°28'07.30" (104.468884)	LONGITUDE = 104°28'10.45" (104.468588)
NAVD 83 ENTRY POINT	NAVD 83 ENTRY POINT	NAVD 83 ENTRY POINT
LATITUDE = 40°28'38.25" (40.483559)	LATITUDE = 40°28'37.50" (40.483764)	LATITUDE = 40°28'30.67" (40.487408)
LONGITUDE = 104°27'08.45" (104.452839)	LONGITUDE = 104°28'05.47" (104.468186)	LONGITUDE = 104°28'08.61" (104.468238)

PDOP = 2.8