
WPX ENERGY ROCKY MOUNTAIN LLC-EBUS

**PA 321-27
Parachute
Garfield County , Colorado**

Cement Surface Casing
13-Aug-2013

Post Job Report

The Road to Excellence Starts with Safety

Sold To #: 300721	Ship To #: 3060062	Quote #:	Sales Order #: 900657805
Customer: WPX ENERGY ROCKY MOUNTAIN LLC-EBUS	Customer Rep: Towers, Ron		
Well Name: PA	Well #: 321-27	API/UWI #: 05-045-21861	
Field: Parachute	City (SAP): PARACHUTE	County/Parish: Garfield	State: Colorado
Lat: N 39.497 deg. OR N 39 deg. 29 min. 48.235 secs.	Long: W 107.989 deg. OR W -108 deg. 0 min. 39.125 secs.		
Contractor: Nabors	Rig/Platform Name/Num: Nabors 573		
Job Purpose: Cement Surface Casing			
Well Type: Development Well	Job Type: Cement Surface Casing		
Sales Person: MAYO, MARK	Srv Supervisor: YOUNG, JEREMY	MBU ID Emp #: 418013	

Job Personnel

HES Emp Name	Exp Hrs	Emp #	HES Emp Name	Exp Hrs	Emp #	HES Emp Name	Exp Hrs	Emp #
CAMPBELL, DAVID Arthur	5	544403	EICKHOFF, ROBERT Edward	7.5	495311	SMITH, DUSTIN Michael	5	418015
YOUNG, JEREMY R	7.5	418013						

Equipment

HES Unit #	Distance-1 way	HES Unit #	Distance-1 way	HES Unit #	Distance-1 way	HES Unit #	Distance-1 way
	60 mile	10297346	60 mile	10872429	60 mile	10973571	60 mile
11360881	60 mile	11583932	60 mile	11808833	60 mile		

Job Hours

Date	On Location Hours	Operating Hours	Date	On Location Hours	Operating Hours	Date	On Location Hours	Operating Hours
08/12/2013	5	1	08/13/2013	2.5	2			

TOTAL Total is the sum of each column separately

Job

Formation Name	Formation Depth (MD)	Top	Bottom	Form Type	Job depth MD	Job Depth TVD	Water Depth	Perforation Depth (MD)	From	To
				BHST	2853. ft	2853. ft				
						4. ft				

Job Times

Date	Time	Time Zone
12 - Aug - 2013	18:00	MST
12 - Aug - 2013	21:30	MST
12 - Aug - 2013	23:59	MST
13 - Aug - 2013	01:31	MST
13 - Aug - 2013	02:30	MST

Well Data

Description	New / Used	Max pressure psig	Size in	ID in	Weight lbm/ft	Thread	Grade	Top MD ft	Bottom MD ft	Top TVD ft	Bottom TVD ft
-------------	------------	-------------------	---------	-------	---------------	--------	-------	-----------	--------------	------------	---------------

Tools and Accessories

Type	Size	Qty	Make	Depth	Type	Size	Qty	Make	Depth	Type	Size	Qty	Make
Guide Shoe					Packer					Top Plug	9.625	1	HES
Float Shoe					Bridge Plug					Bottom Plug			
Float Collar					Retainer					SSR plug set			
Insert Float										Plug Container	9.625	1	HES
Stage Tool										Centralizers			

Miscellaneous Materials

Gelling Agt	Conc	Surfactant	Conc	Acid Type	Qty	Conc	%
Treatment Fld	Conc	Inhibitor	Conc	Sand Type	Size	Qty	

Fluid Data

Stage/Plug #: 1									
Fluid #	Stage Type	Fluid Name	Qty	Qty uom	Mixing Density lbm/gal	Yield ft3/sk	Mix Fluid Gal/sk	Rate bbl/min	Total Mix Fluid Gal/sk

Stage/Plug #: 1									
Fluid #	Stage Type	Fluid Name	Qty	Qty uom	Mixing Density uom	Yield uom	Mix Fluid uom	Rate uom	Total Mix Fluid uom

Stage/Plug #: 1									
Fluid #	Stage Type	Fluid Name	Qty	Qty uom	Mixing Density lbm/gal	Yield ft ³ /sk	Mix Fluid Gal/sk	Rate bbl/min	Total Mix Fluid Gal/sk
1	Fresh Water Spacer	FRESH WATER	40.00	bbl	8.33	.0	.0	4	
2	VersaCem GJ1 Lead Cement	VARICEM (TM) CEMENT (452009)	460.0	sacks	12.3	2.38	13.75	8	13.75
13.75 Gal		FRESH WATER							
3	VersaCemGJ1 Tail Cement	VERSACEM (TM) SYSTEM (452010)	160.0	sacks	12.8	2.11	11.75	7	11.75
11.746 Gal		FRESH WATER							
4	Displacement Fluid	FRESH WATER	221.60	bbl	8.34	.0	.0	10	
Calculated Values		Pressures		Volumes					
Displacement	221.6	Shut In: Instant		Lost Returns	NO	Cement Slurry	255.1	Pad	
Top Of Cement	SURFACE	5 Min		Cement Returns	13	Actual Displacement	221.6	Treatment	
Frac Gradient		15 Min		Spacers	40	Load and Breakdown		Total Job	496.7
Rates									
Circulating		Mixing	8	Displacement	10	Avg. Job	9		
Cement Left In Pipe	Amount	44 ft	Reason	Shoe Joint					
Frac Ring # 1 @	ID	Frac ring # 2 @	ID	Frac Ring # 3 @	ID	Frac Ring # 4 @	ID		
The Information Stated Herein Is Correct				Customer Representative Signature					

The Road to Excellence Starts with Safety

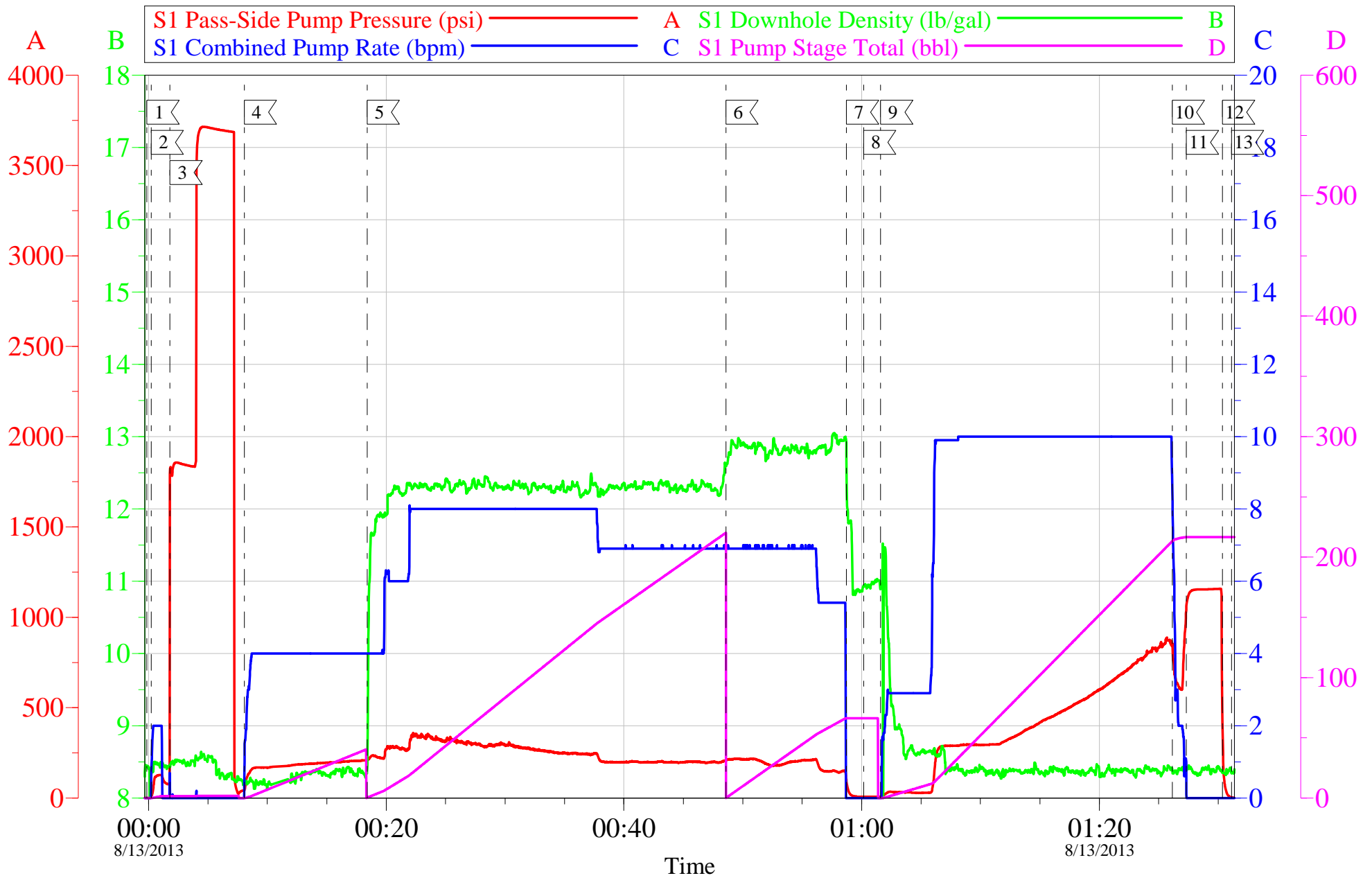
Sold To #: 300721		Ship To #: 3060062		Quote #:		Sales Order #: 900657805	
Customer: WPX ENERGY ROCKY MOUNTAIN LLC-EBUS				Customer Rep: Towers, Ron			
Well Name: PA			Well #: 321-27			API/UWI #: 05-045-21861	
Field: Parachute		City (SAP): PARACHUTE		County/Parish: Garfield		State: Colorado	
Legal Description:							
Lat: N 39.497 deg. OR N 39 deg. 29 min. 48.235 secs.				Long: W 107.989 deg. OR W -108 deg. 0 min. 39.125 secs.			
Contractor: Nabors			Rig/Platform Name/Num: Nabors 573				
Job Purpose: Cement Surface Casing						Ticket Amount:	
Well Type: Development Well			Job Type: Cement Surface Casing				
Sales Person: MAYO, MARK			Srv Supervisor: YOUNG, JEREMY			MBU ID Emp #: 418013	

Activity Description	Date/Time	Cht #	Rate bbl/min	Volume bbl		Pressure psig		Comments
				Stage	Total	Tubing	Casing	
Call Out	08/12/2013 18:00							
Pre-Convoy Safety Meeting	08/12/2013 18:50							WITH ALL HES PERSONNEL
Crew Leave Yard	08/12/2013 19:00							
Arrive At Loc	08/12/2013 21:30							CEMENTER AND PUMP TRUCK CAME FROM PREVIOUS JOB AND ARRIVED AT 19:00. CEMENT ARRIVED ON LOCATION AT 21:30. RIG RUNNING CASING UPON ALL HES PERSONNEL ARRIVAL
Assessment Of Location Safety Meeting	08/12/2013 22:30							WITH ALL HES PERSONNEL
Other	08/12/2013 22:40							SPOT EQUIPMENT
Pre-Rig Up Safety Meeting	08/12/2013 22:50							WITH ALL HES PERSONNEL
Rig-Up Equipment	08/12/2013 23:00							
Pre-Job Safety Meeting	08/12/2013 23:45							WITH ALL PERSONNEL ON LOCATION
Start Job	08/12/2013 23:59							TD 2870 FT, TP 2853 FT, SHOE 44 FT, HOLE 13 1/2IN, MUD 10 PPG WBM, CSG 9 5/8 IN 32.3 LB/FT K-55
Other	08/13/2013 00:00		2	2			128.0	FILL LINES WITH FRESH WATER
Test Lines	08/13/2013 00:01							TEST LINES TO 3700 PSI. PRESSURE HOLDING

Activity Description	Date/Time	Cht #	Rate bbl/min	Volume bbl		Pressure psig		Comments
				Stage	Total	Tubing	Casing	
Pump Spacer 1	08/13/2013 00:08		4	20			200.0	FRESH WATER
Pump Lead Cement	08/13/2013 00:18		8	195			345.0	460 SKS AT 12.3 PPG, 2.38 FT3/SK, 13.75 GAL/SK
Pump Tail Cement	08/13/2013 00:48		7	60.1			205.0	160 SKS AT 12.8 PPG, 2.11 FT3/SK, 11.75 GAL/SK
Shutdown	08/13/2013 00:58							
Drop Top Plug	08/13/2013 01:00							PLUG LAUNCHED
Pump Displacement	08/13/2013 01:01		10	211.6			880.0	FRESH WATER
Slow Rate	08/13/2013 01:26		2	10			600.0	SLOW RATE 10 BBL PRIOR TO CALCULATED DISPLACEMENT
Bump Plug	08/13/2013 01:27		2		221.6		1150.0	PLUG BUMPED
Check Floats	08/13/2013 01:30							FLOATS HOLDING. RETURNED 1.25 BBL H2O TO TRUCK
End Job	08/13/2013 01:31							PIPE WAS RECIPROCATED DURING JOB. GOOD CIRCULATION THROUGHOUT JOB. HES RETURNED 13 BBL CEMENT TO SURFACE. USED 40 LBS SUGAR IN CEMENT RETURNS
Pre-Rig Down Safety Meeting	08/13/2013 01:35							WITH ALL HES PERSONNEL
Rig-Down Equipment	08/13/2013 01:40							
Pre-Convoy Safety Meeting	08/13/2013 02:20							WITH ALL HES PERSONNEL
Crew Leave Location	08/13/2013 02:30							
Comment	08/13/2013 02:31							THANK YOU FOR USING HALLIBURTON CEMENT DEPARTMENT. JEREMY YOUNG AND CREW

WPX - PA 321-27

9 5/8 SURFACE



Customer: WPX
Well Description: PA 321-27
Customer Rep: RON TOWERS

Job Date: 12-Aug-2013
Job Type: SURFACE
Cement Supervisor: JEREMY YOUNG

Sales Order #: 900657805
ADC Used: YES
Elite #7: ROB EICKHOFF

OptiCem v6.4.10
13-Aug-13 01:38

HALLIBURTON

Water Analysis Report

Company: WPX
Submitted by: JEREMY YOUNG
Attention: LAB
Lease: PA
Well #: 321-27

Date: 8/12/2013
Date Rec.:
S.O.#: 900657805
Job Type: SURFACE

Specific Gravity	<i>MAX</i>	1
pH	<i>8</i>	7
Potassium (K)	<i>5000</i>	0 Mg / L
Calcium (Ca)	<i>500</i>	250 Mg / L
Iron (FE2)	<i>300</i>	0 Mg / L
Chlorides (Cl)	<i>3000</i>	0 Mg / L
Sulfates (SO ₄)	<i>1500</i>	UNDER 200 Mg / L
Chlorine (Cl ₂)		0 Mg / L
Temp	<i>40-80</i>	68 Deg
Total Dissolved Solids		120 Mg / L

Respectfully: JEREMY YOUNG

Title: CEMENTING SUPERVISOR

Location: Grand Junction, CO

NOTICE:

This report is limited to the described sample tested. Any person using or relying on this report agrees that Halliburton shall not be liable for any loss or damage whether due to act or omission resulting from such report or its

Sales Order #: 900657805	Line Item: 10	Survey Conducted Date: 8/13/2013
Customer: WPX ENERGY ROCKY MOUNTAIN LLC-EBUS		Job Type (BOM): CMT SURFACE CASING BOM
Customer Representative: RON TOWERS		API / UWI: (leave blank if unknown) 05-045-21861
Well Name: PA		Well Number: 321-27
Well Type: Development Well	Well Country: United States of America	
H2S Present:	Well State: Colorado	Well County: Garfield

Dear Customer,

We hope that you were satisfied with the service quality of this job performed by Halliburton. It is the aim of our management and service personnel to deliver equipment and service of a standard unmatched in the service sector of the energy industry.

Please take the time to let us know if our performance met with your satisfaction. Please be as critical as possible to ensure we constantly improve our service. Your comments are of great value to us and are intended for the exclusive use of Halliburton.

CUSTOMER SATISFACTION SURVEY

CATEGORY	CUSTOMER SATISFACTION RESPONSE	
Survey Conducted Date	The date the survey was conducted	8/13/2013
Survey Interviewer	The survey interviewer is the person who initiated the survey.	JEREMY YOUNG (HX37077)
Customer Participation	Did the customer participate in this survey? (Y/N)	Yes
Customer Representative	Enter the Customer representative name	RON TOWERS
HSE	Was our HSE performance satisfactory? Circle Y or N	Yes
Equipment	Were you satisfied with our Equipment? Circle Y or N	Yes
Personnel	Were you satisfied with our people? Circle Y or N	Yes
Customer Comment	Customer's Comment	

CUSTOMER SIGNATURE

Sales Order #: 900657805	Line Item: 10	Survey Conducted Date: 8/13/2013
Customer: WPX ENERGY ROCKY MOUNTAIN LLC-EBUS		Job Type (BOM): CMT SURFACE CASING BOM
Customer Representative: RON TOWERS		API / UWI: (leave blank if unknown) 05-045-21861
Well Name: PA		Well Number: 321-27
Well Type: Development Well	Well Country: United States of America	
H2S Present:	Well State: Colorado	Well County: Garfield

KEY PERFORMANCE INDICATORS

General	
Survey Conducted Date	8/13/2013
The date the survey was conducted	

Cementing KPI Survey	
Type of Job	0
Select the type of job. (Cementing or Non-Cementing)	
Select the Maximum Deviation range for this Job	Vertical
What is the highest deviation for the job you just completed? This may not be the maximum well deviation.	
Total Operating Time (hours)	3
Total Operating Hours Including Rig-up, Pumping, Rig-down. Enter in decimal format.	
HSE Incident, Accident, Injury	No
HSE Incident, Accident, Injury. This should be recordable incidents only.	
Was the job purpose achieved?	Yes
Was the job delivered correctly as per customer agreed design?	
Operating Hours (Pumping Hours)	1.5
Total number of hours pumping fluid on this job. Enter in decimal format.	
Customer Non-Productive Rig Time (hrs)	0
Lost time due to Halliburton in the start, execution, or completion of an ordered service or product, or delays in a follow-on service. Enter in decimal format. 0 if none.	
Type of Rig Classification Job Was Performed	Drilling Rig (Portable)
Type Of Rig (classification) Job Was Performed On	
Number Of JSAs Performed	6
Number Of Jsas Performed	
Number of Unplanned Shutdowns	0
Unplanned shutdown is when injection stops for any period of time.	
Was this a Primary Cement Job (Yes / No)	Yes

Sales Order #: 900657805	Line Item: 10	Survey Conducted Date: 8/13/2013
Customer: WPX ENERGY ROCKY MOUNTAIN LLC-EBUS		Job Type (BOM): CMT SURFACE CASING BOM
Customer Representative: RON TOWERS		API / UWI: (leave blank if unknown) 05-045-21861
Well Name: PA		Well Number: 321-27
Well Type: Development Well	Well Country: United States of America	
H2S Present:	Well State: Colorado	Well County: Garfield

Primary Cement Job= Casing job, Liner job, or Tie-back job.	
Did We Run Wiper Plugs? Did We Run Top And Bottom Casing Wiper Plugs?	Top
Mixing Density of Job Stayed in Designed Density Range (0-100%) Density Range defined as +/- .20 ppg. Calculation: Total BBLs cement mixed at designed density divided by total BBLs of cement multiplied by 100	98
Was Automated Density Control Used? Was Automated Density Control (ADC) Used ?	Yes
Pump Rate (percent) of Job Stayed At Designed Pump Rate Pump Rate range defined as +/- 1bbl/min. Calculation: Total BBLs of fluid pumped at the designed rate divided by Total BBLs of fluid pumped, multiplied by 100	95
Nbr of Remedial Sqz Jobs Rqd - Competition Number Of Remedial Squeeze Jobs Required After Primary Job Performed By Competition	0
Nbr of Remedial Plug Jobs Rqd - HES Number Of Remedial Plug Jobs Needed After Primary Plug Pumped By HES	0
Nbr of Remedial Sqz Jobs Rqd - HES Number Of Remedial Squeeze Jobs Required After Primary Job Performed By HES	0