



Weatherford®

Compact Micro-Imager Image Only

COMPANY: KINDER MORGAN C02 Co. L.P

WELL: GOODMAN POINT #26

FIELD: MCELMO DOME

COUNTY: MONTEZUMA **STATE:** COLORADO

Location: **SHL : 2327' FSL & 241' FEL** **Latitude:**

SEC 7, TWP 36N, RGE 17W **37.39204**

API: **05-083-06703** **Longitude:**

License: **-108.75547**

Other Services:
 COMPENSATED DENSITY
 COMPENSATED NEUTRON
 ARRAY INDUCTION
 DUAL LATEROLOG
 SPECTRAL GAMMA RAY

Permanent Datum: GL **Elevation:** 6934.00 ft

Log measured from KB 22.00 ft **above Permanent Datum**

Drilling measured from KB

Elevations: **K.B.:** 6956.00 ft

D.F.: 6956.00 ft

G.L.: 6934.00 ft

Date	28-OCT-2013	
Run Number	TWO	
Service Order	3529468	
Depth Driller	8070.00 ft	
Depth Logger	8071.00 ft	
First Reading	8068.00 ft	
Last Reading	7815.00 ft	
Casing Driller	9.625 in @ 7803.00 ft	
Casing Logger	7803.00 ft	
Bit Size	6.00 in	
Hole Fluid Type	H2O	
Density	Viscosity	8.30 lb/USg
pH	Fluid Loss	
Sample Source	PIT	
Rm @ Measured Temperature	0.36 ohm-m	@ 67.00° F
Rmf @ Measured Temperature	0.29 ohm-m	@ 67.00° F
Rmc @ Measured Temperature	0.43 ohm-m	@ 67.00° F
Source Rmf	CALC	CALC
Rm @ BHT	0.17 ohm-m	@ 150.00° F
Time Since Circulation	5 HOURS	
Maximum Recorded Temperature	150.00° F	@
Equipment No.	Location	GJ/CO
Recorded By	O. GOYZUETA / C. STAAKE	
Witnessed By	T. KELSAY	

All interpretation of log data are opinions based on inferences from electrical or other measurements. We do not guarantee the accuracy or correctness of any interpretation or recommendation and we shall not be liable or responsible for any loss, cost, damages or expenses incurred or sustained by anyone resulting from any interpretation or recommendation made by any of our employees or agents.

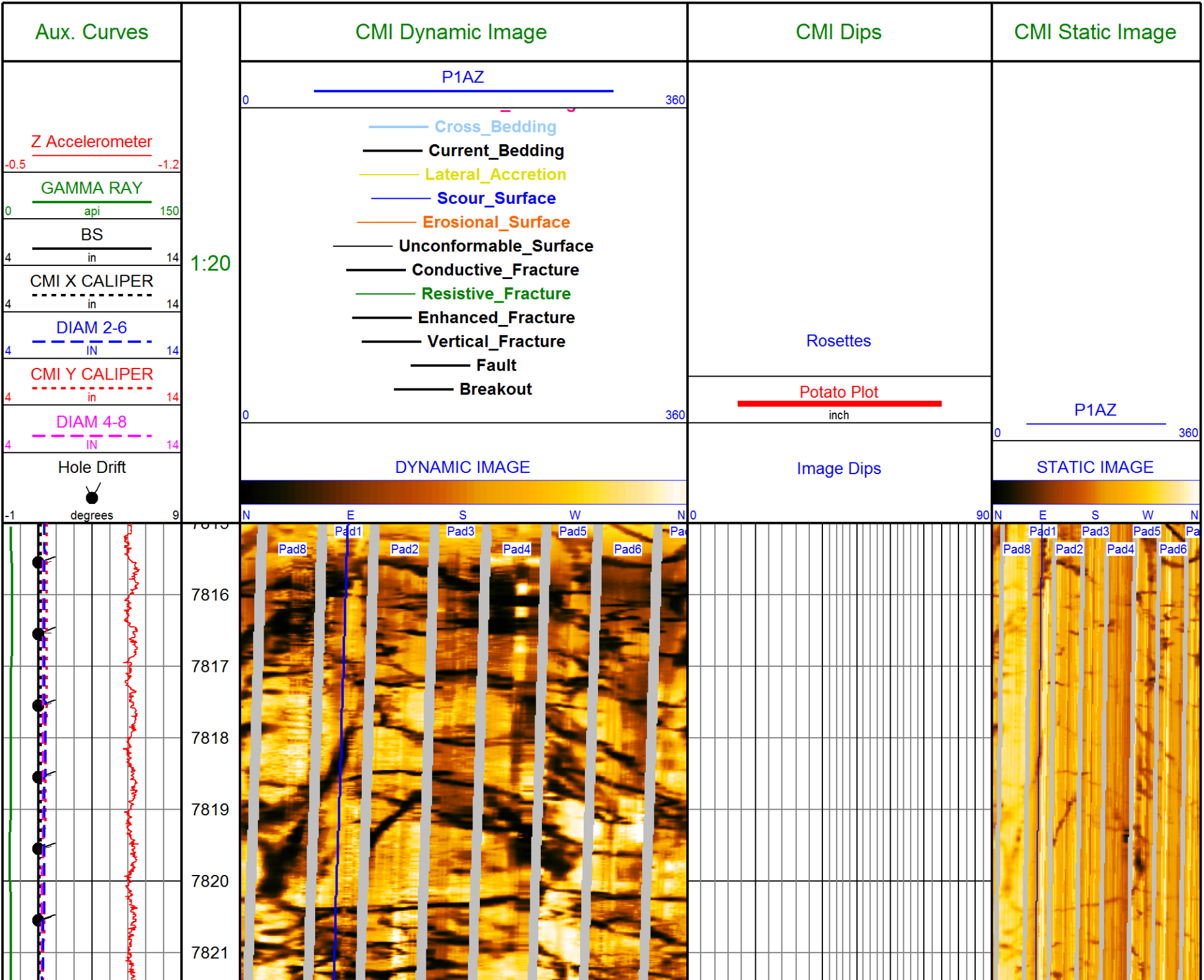
Rig:	NABORS M13	Remarks:	Service Order #	3529468
Drilling Stopped		CMI PASS DEPTH CORRECTED TO OPEN HOLE GAMMA RAY. TIGHT PULLS, BOREHOLE SIZE AND RUGOSITY WILL AFFECT DATA QUALITY.		
Circulation Stopped	5 HOURS			
Tool on Bottom				
BHT	150.00° F			

Equipment Data

Tool Type	Tool Type	Other
MIM-A.A 207 MIE-A.A 102 MCG-D.K 479	RUN 1: MCG, MSG, MFE, MAI RUN 3: MCG, MDN, MPD, MISD RUN 4: MCG, MBN, MDM, MRD, MTD RUN 5: MCG, MBE, MFE, MUG, MLE, MLG	PROCESSED BY J. TURNER

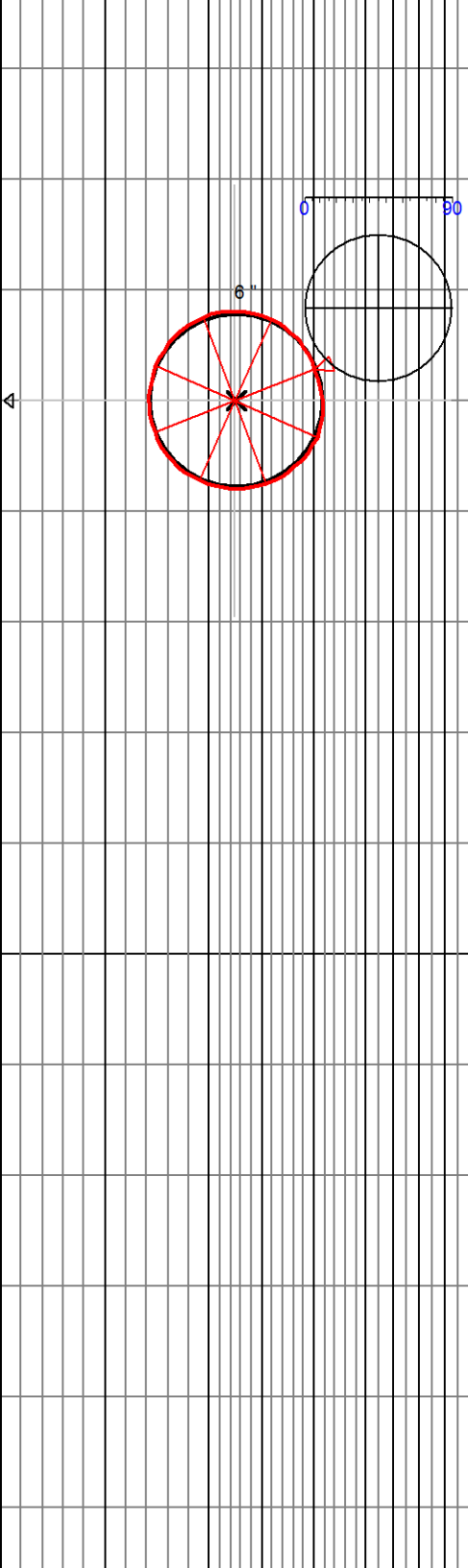
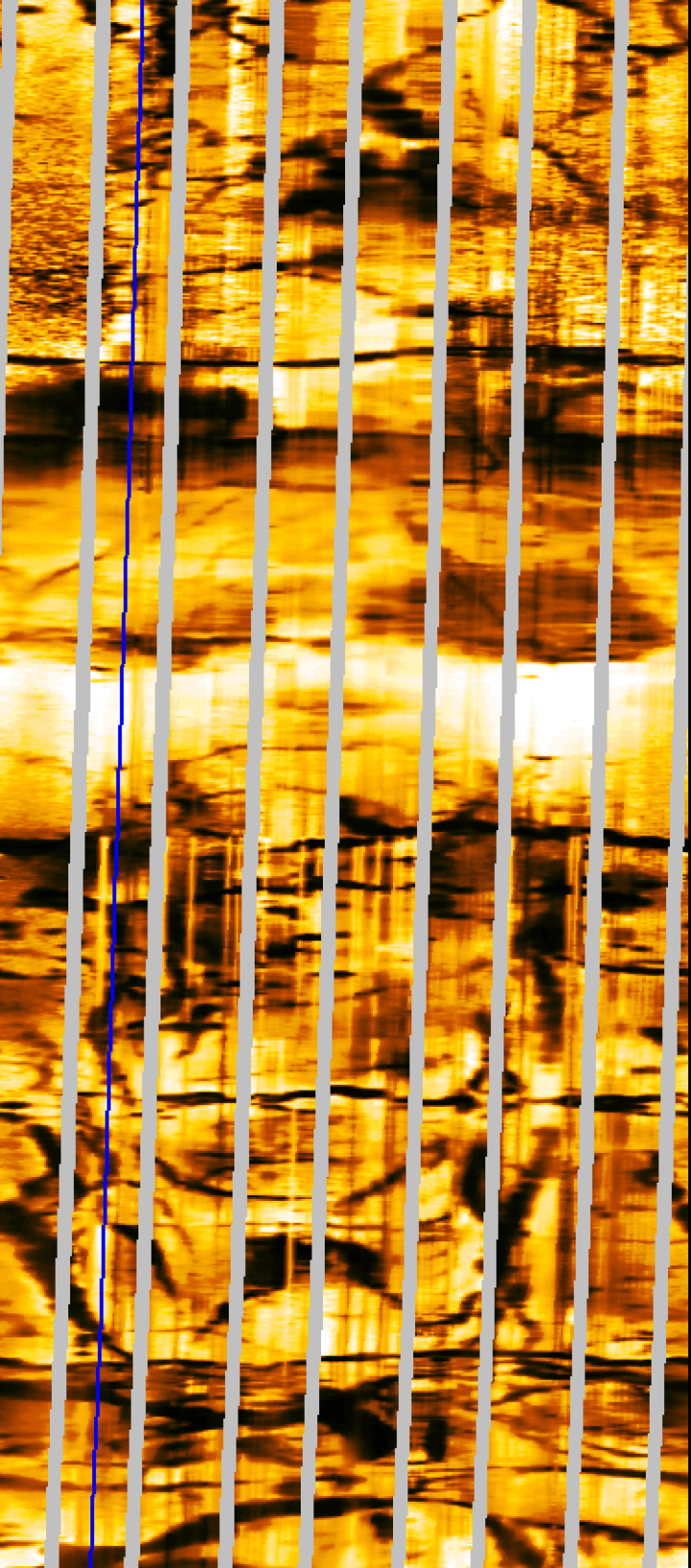
CORRELATION PARAMETERS

All Dips Interactively Edited From Image
Magnetic Declination : 10.11 degrees

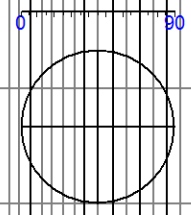
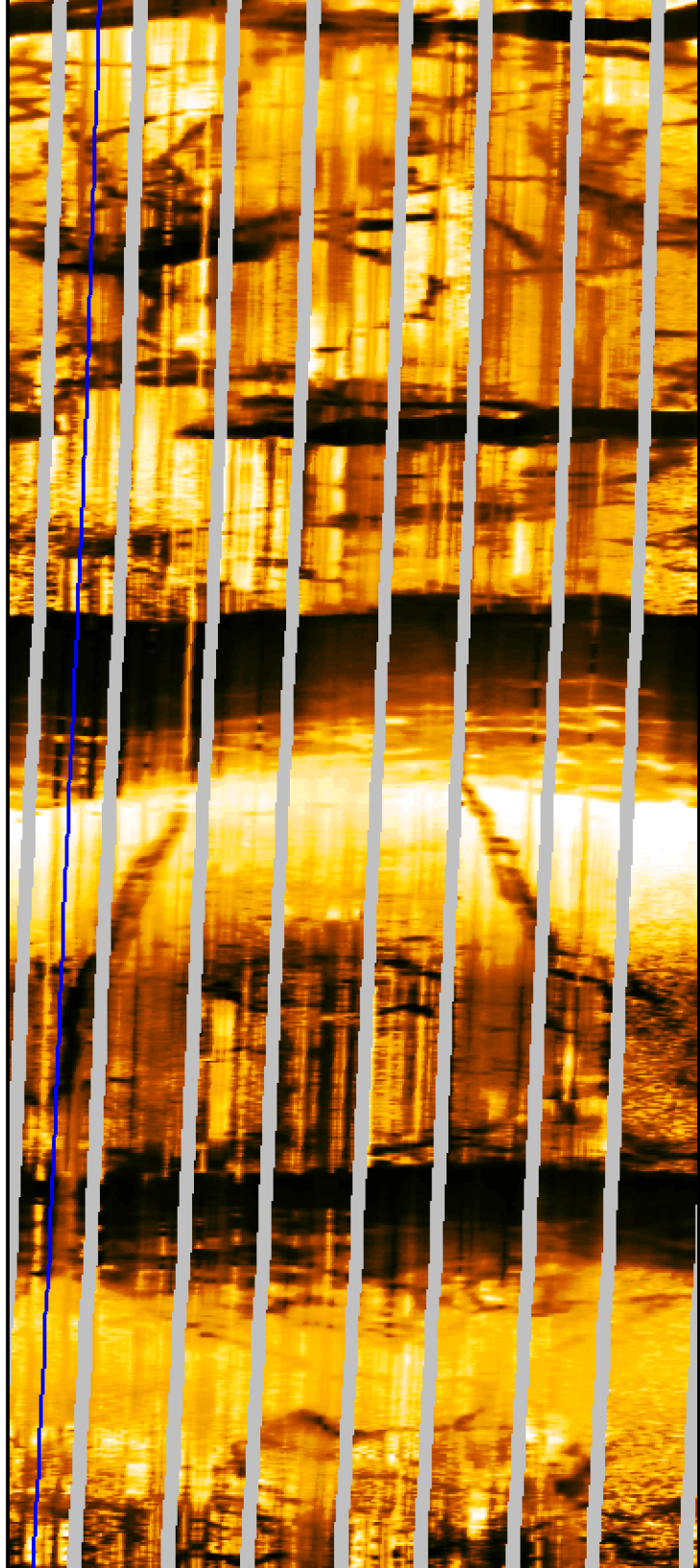
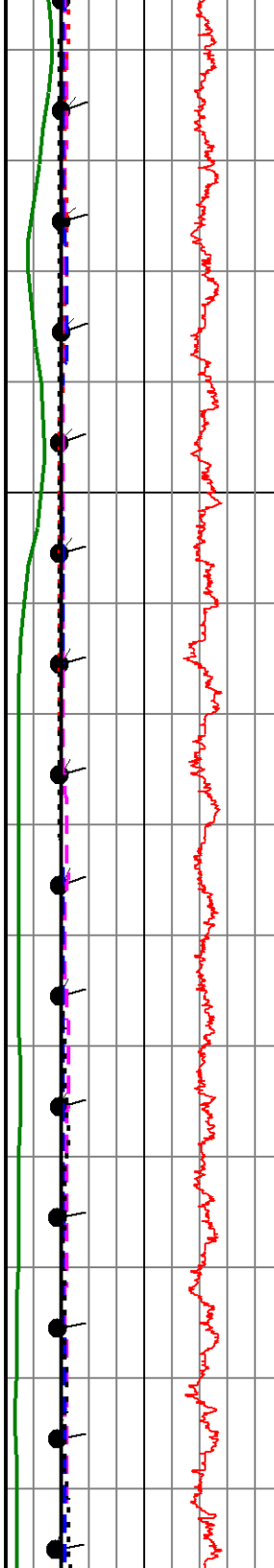


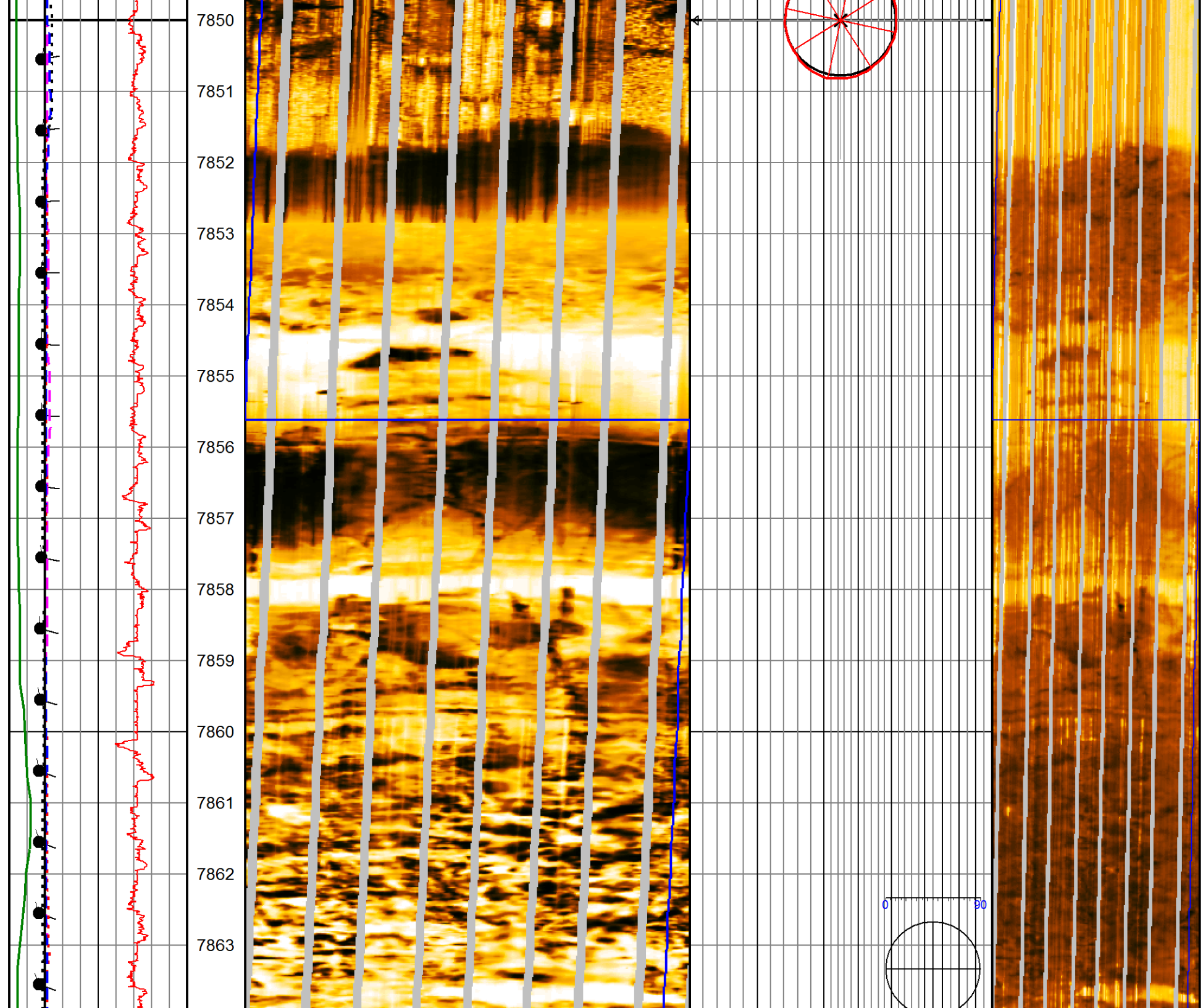
7822
7823
7824
7825
7826
7827
7828
7829
7830
7831
7832
7833
7834
7835

Vertical text on the left side of the grid, possibly a scale or label.

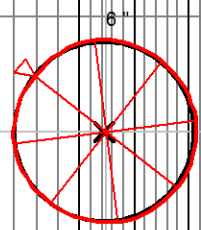
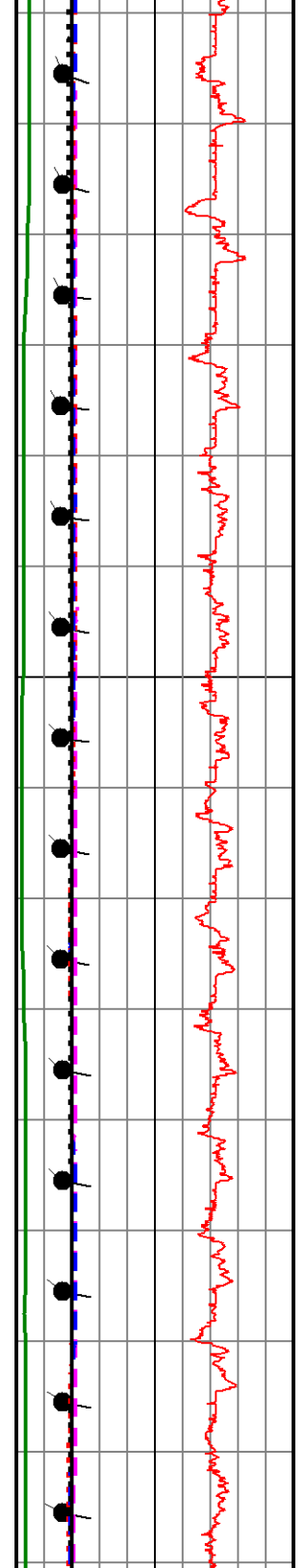
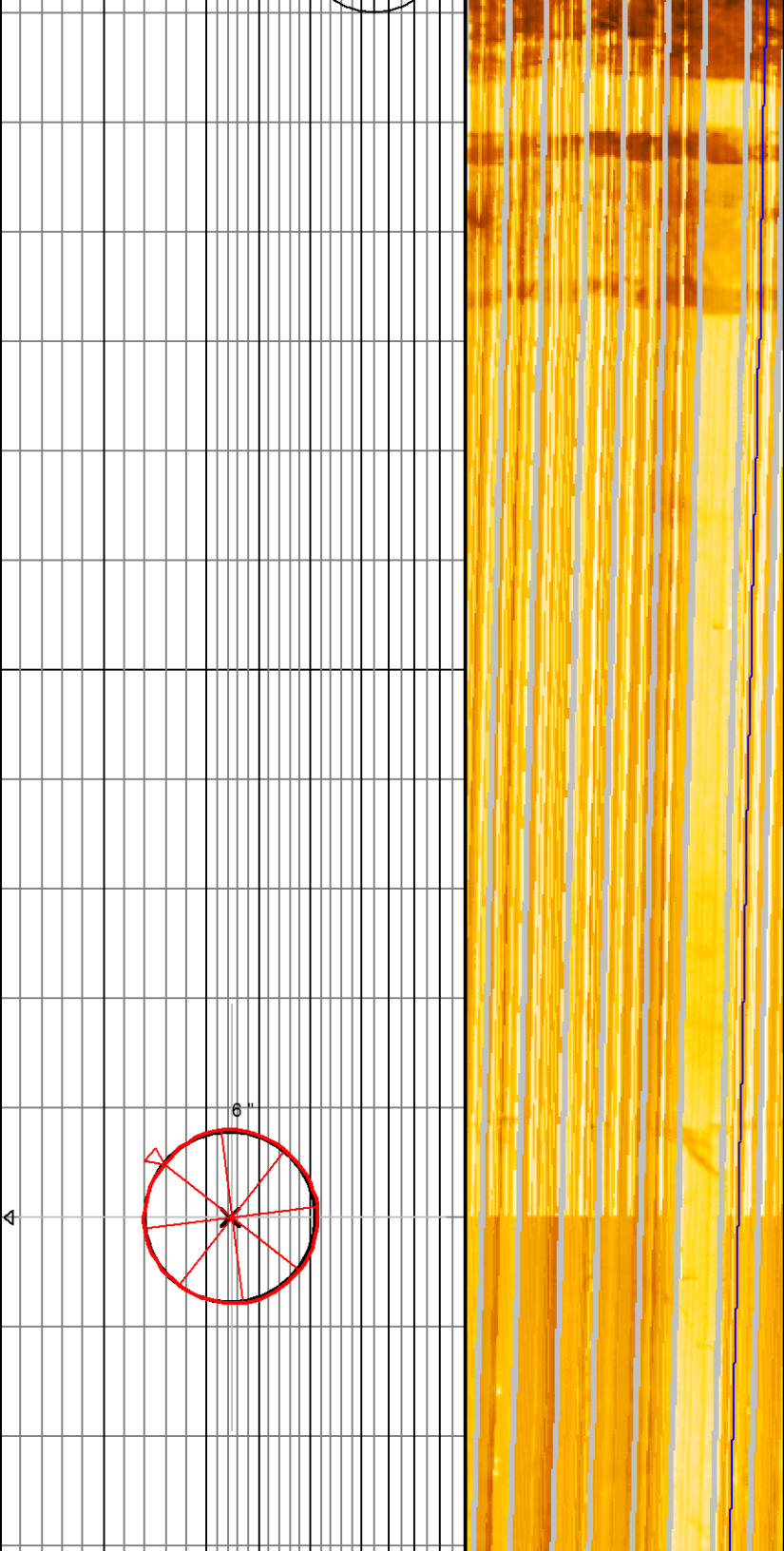
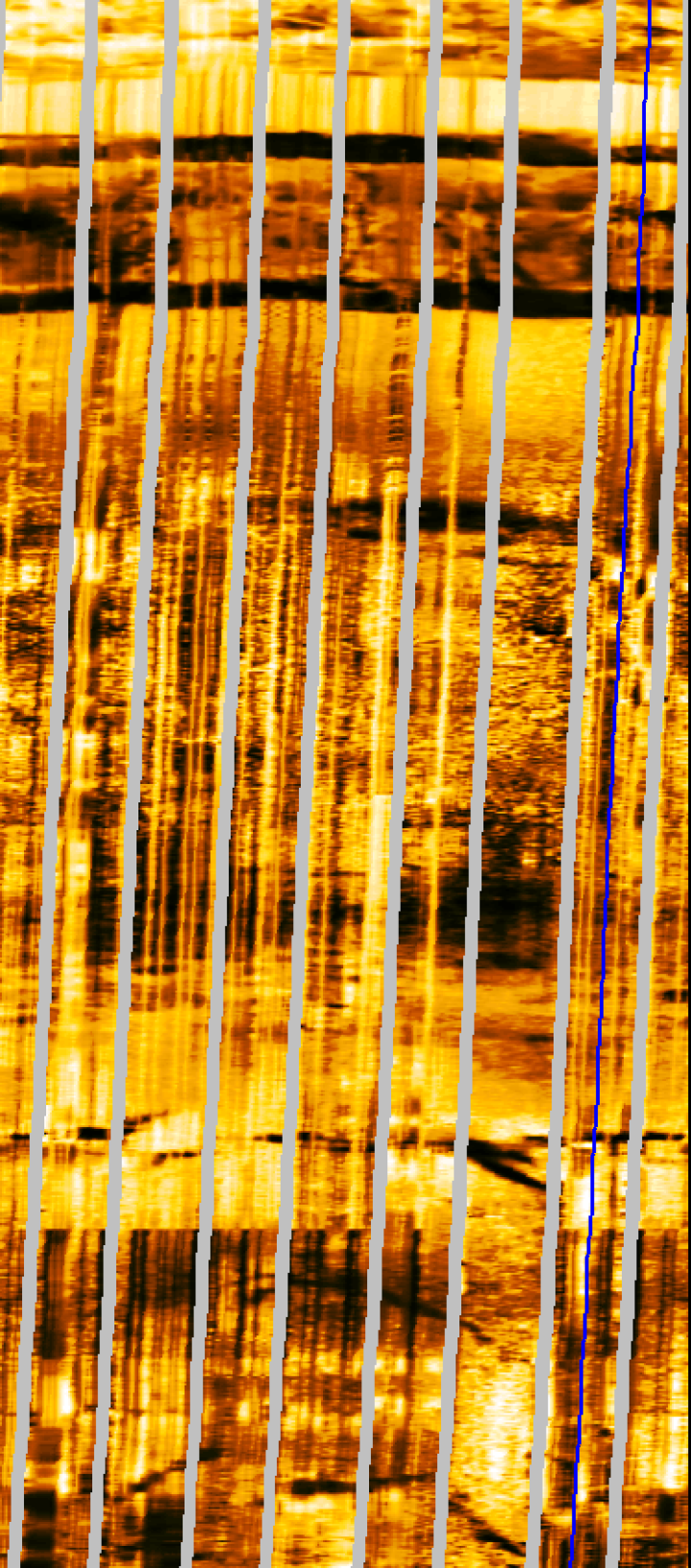


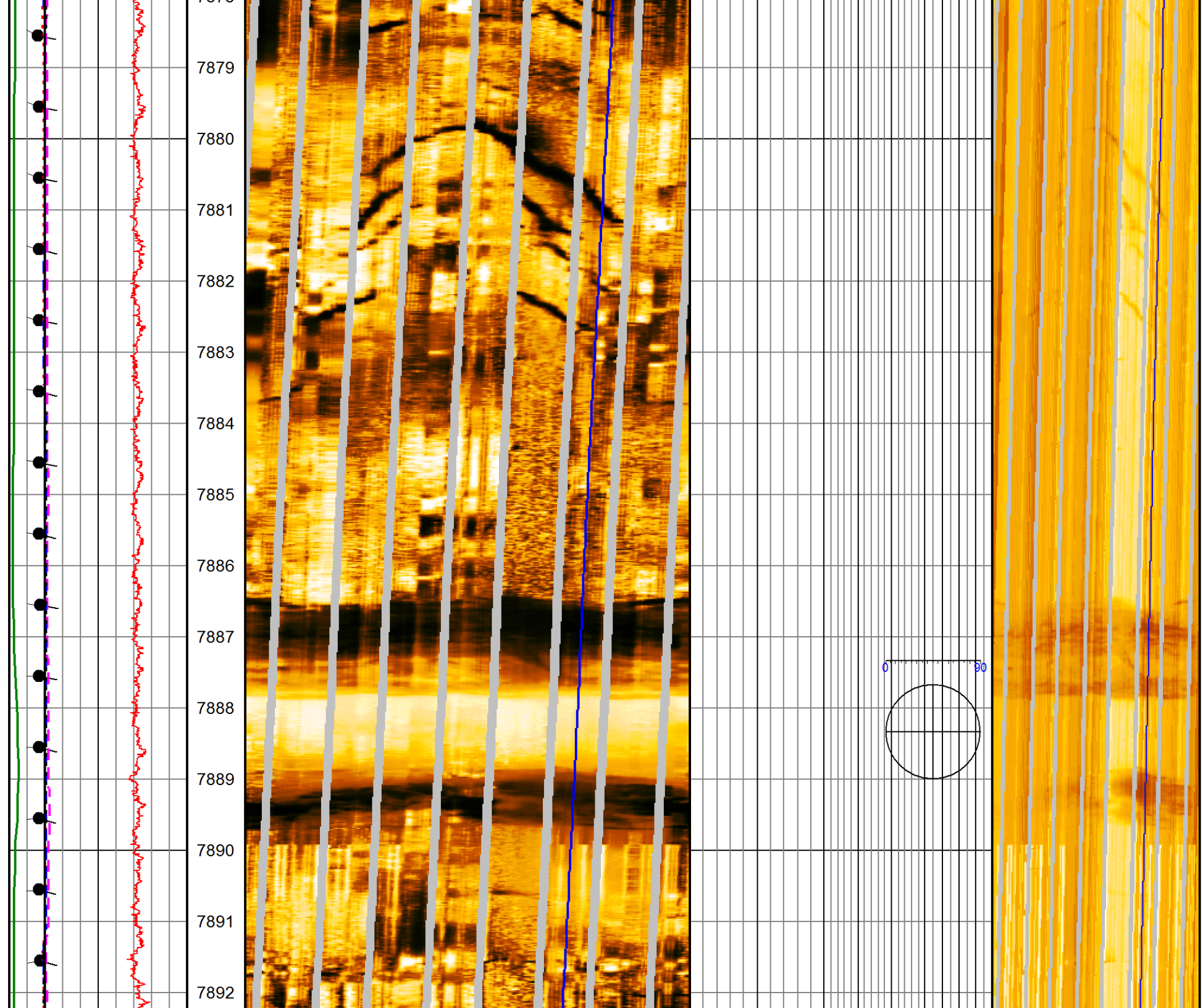
7836
7837
7838
7839
7840
7841
7842
7843
7844
7845
7846
7847
7848
7849



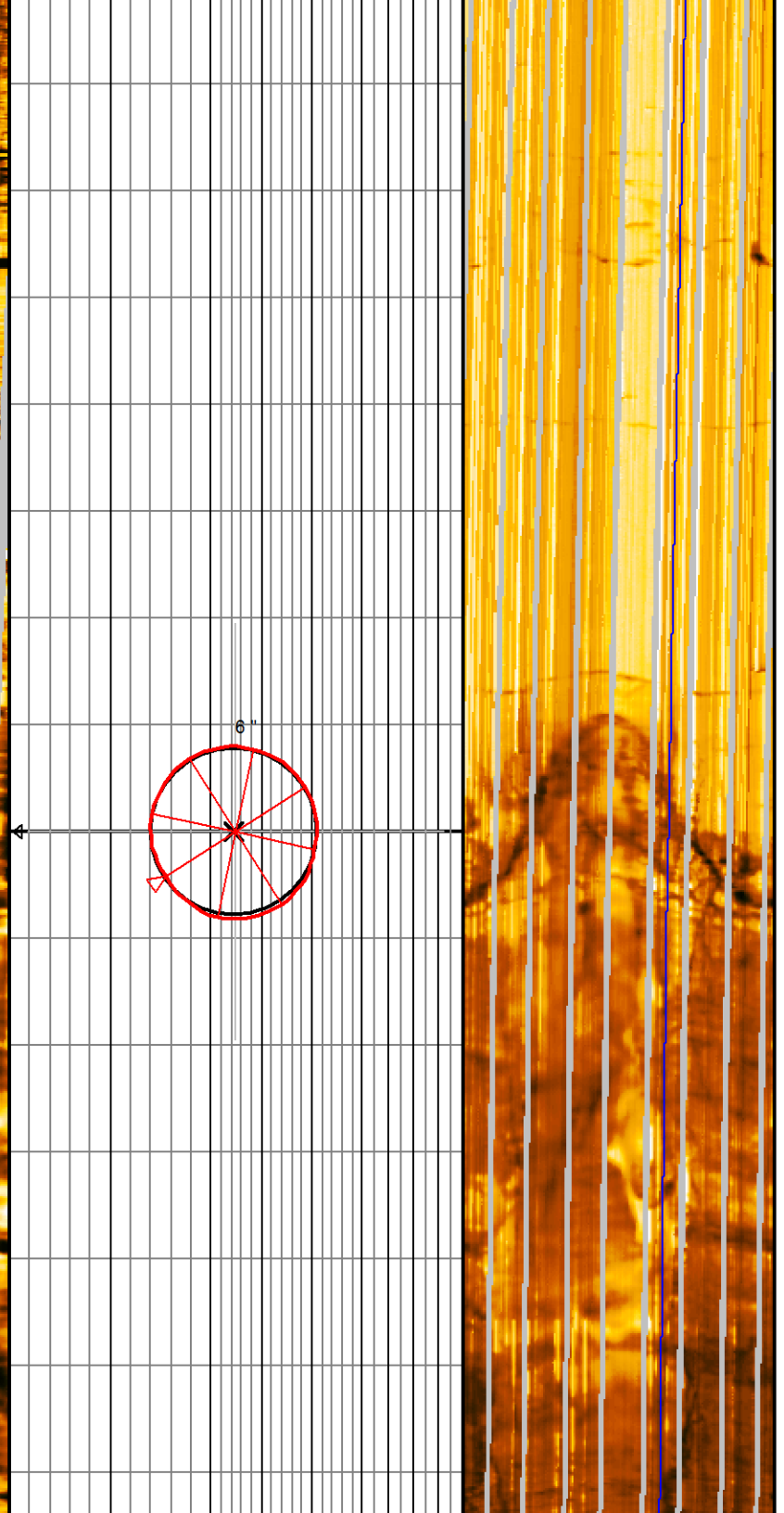
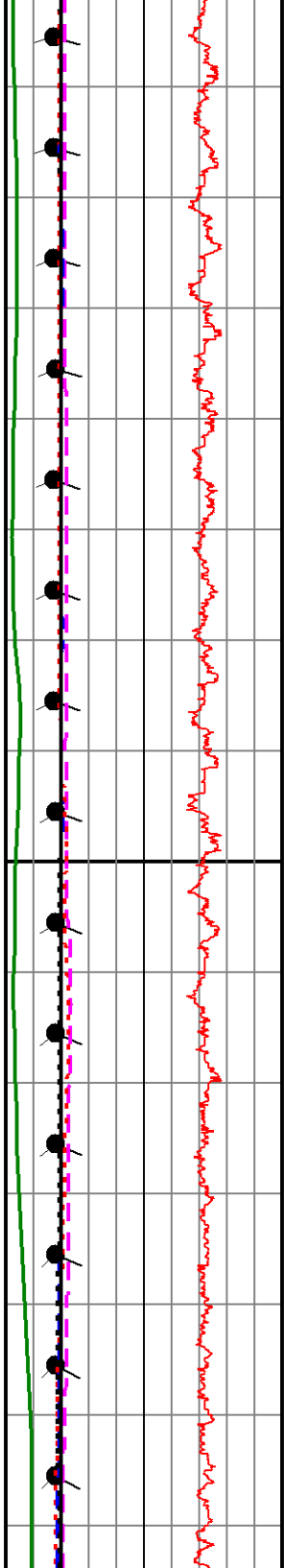


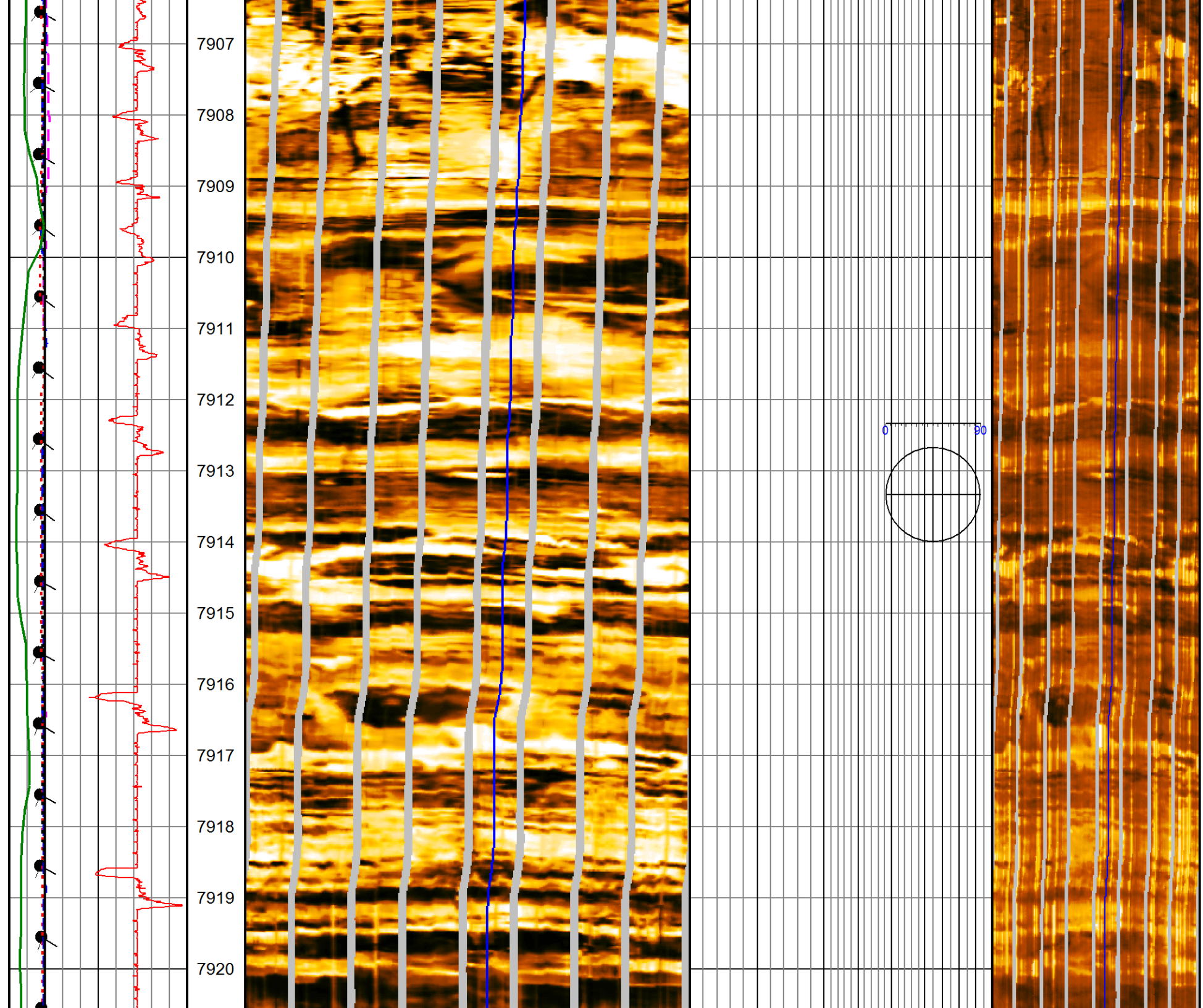
7864
7865
7866
7867
7868
7869
7870
7871
7872
7873
7874
7875
7876
7877
7878

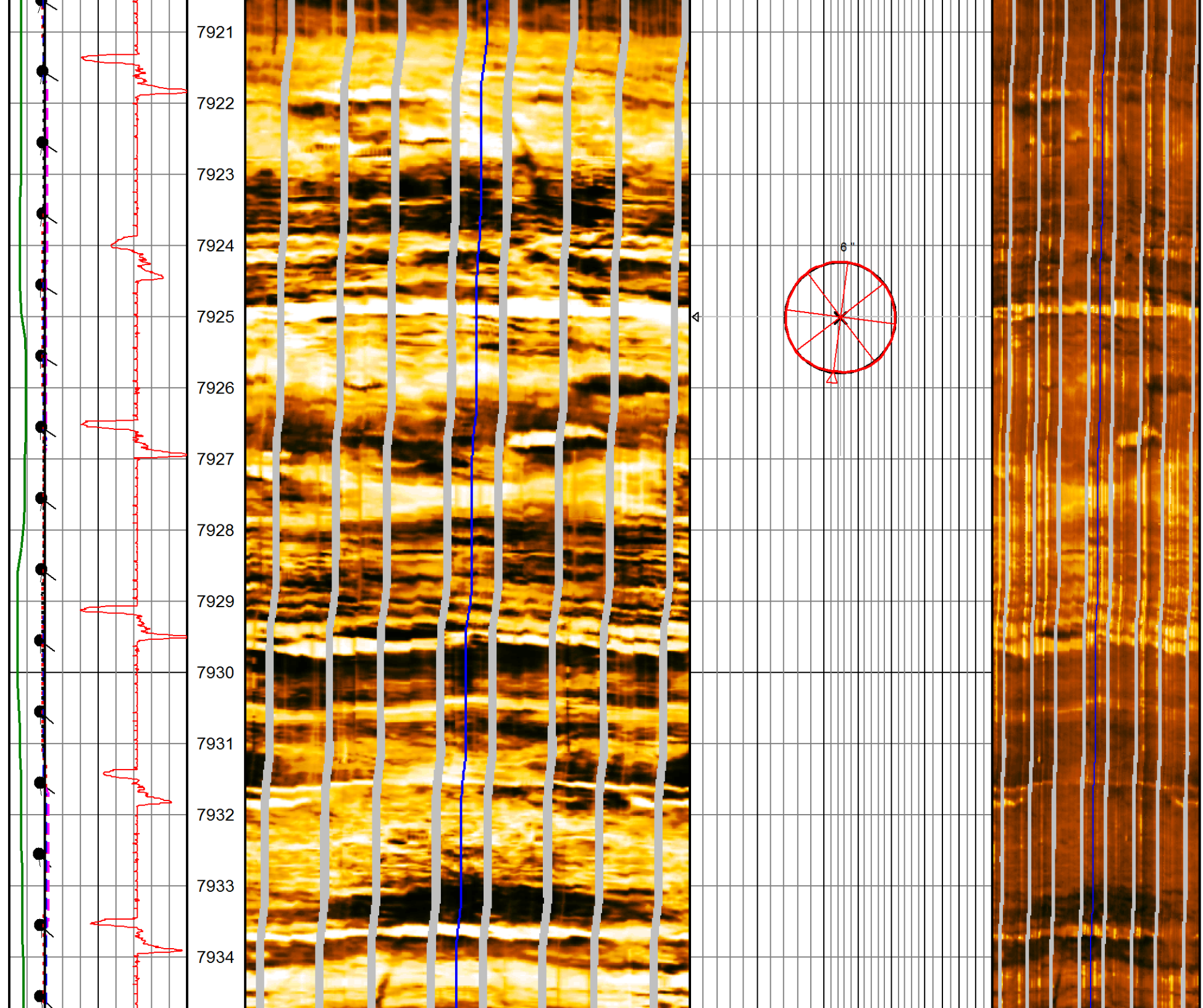


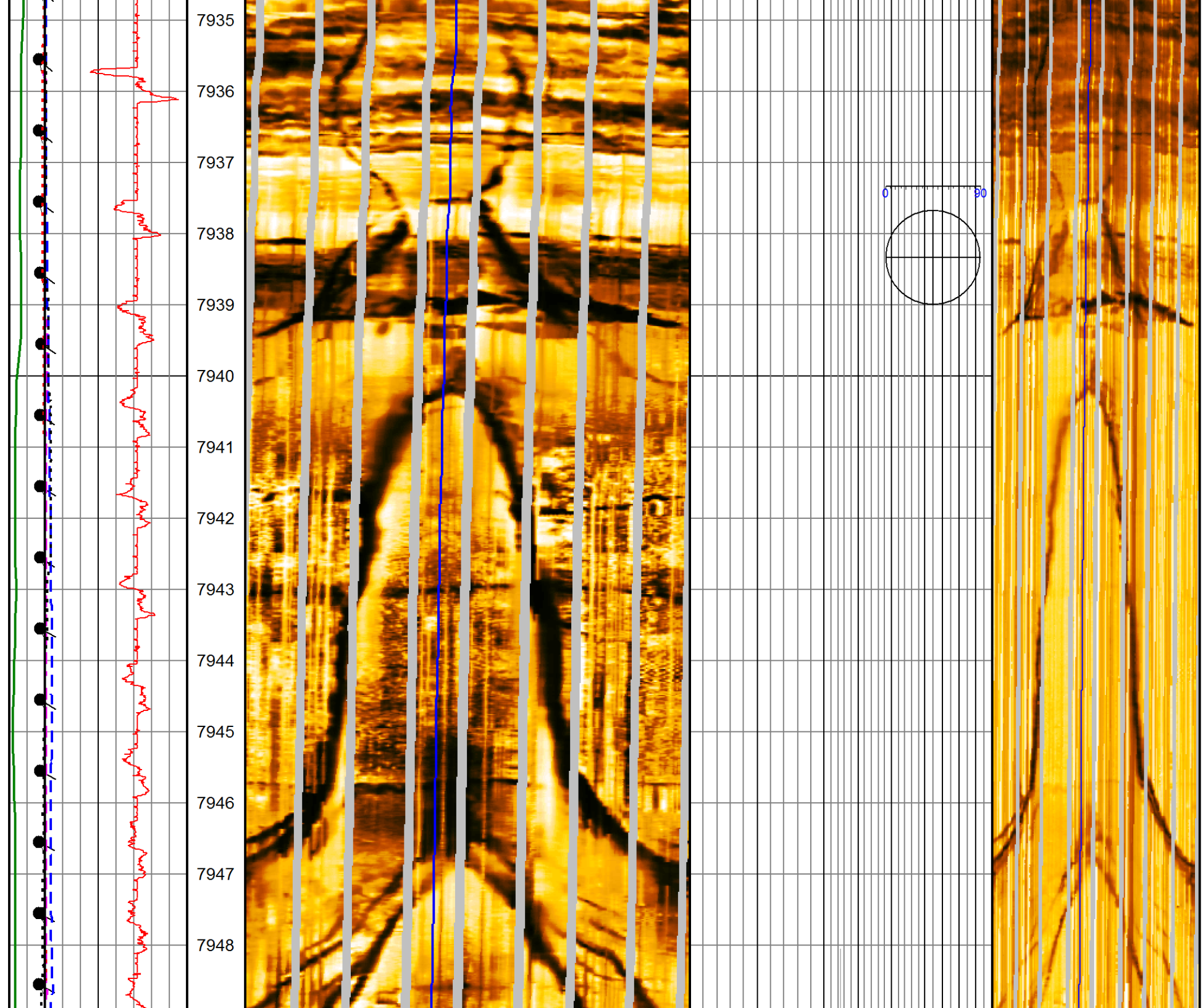


7893
7894
7895
7896
7897
7898
7899
7900
7901
7902
7903
7904
7905
7906

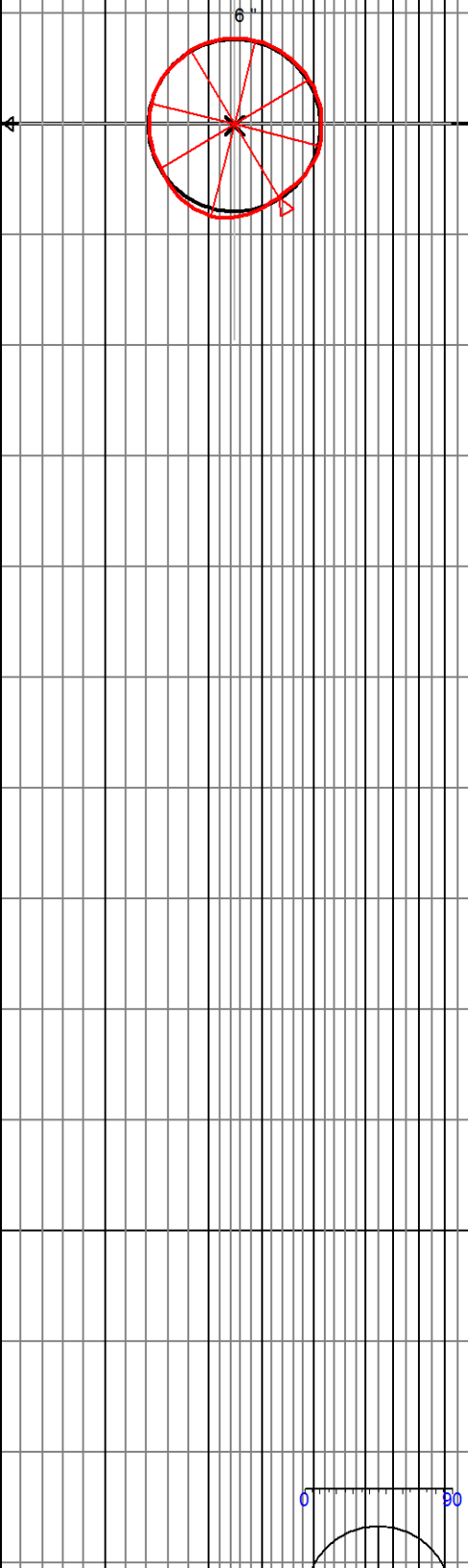
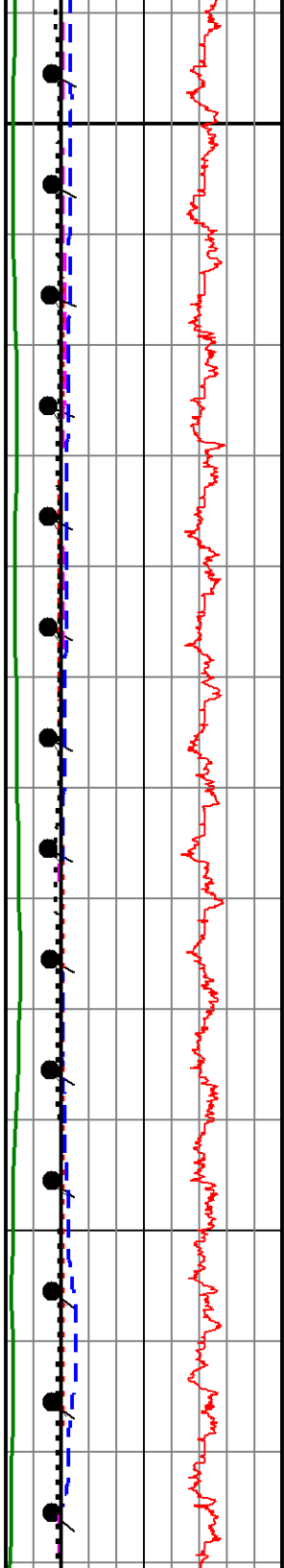




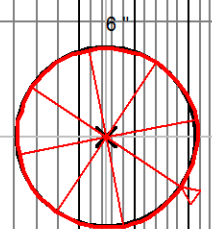
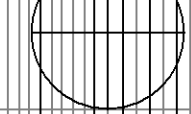
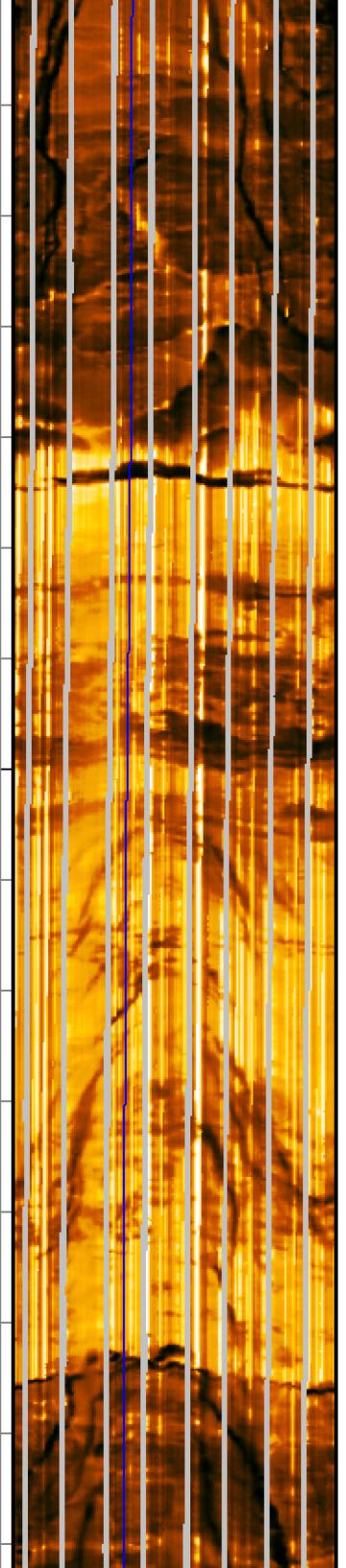
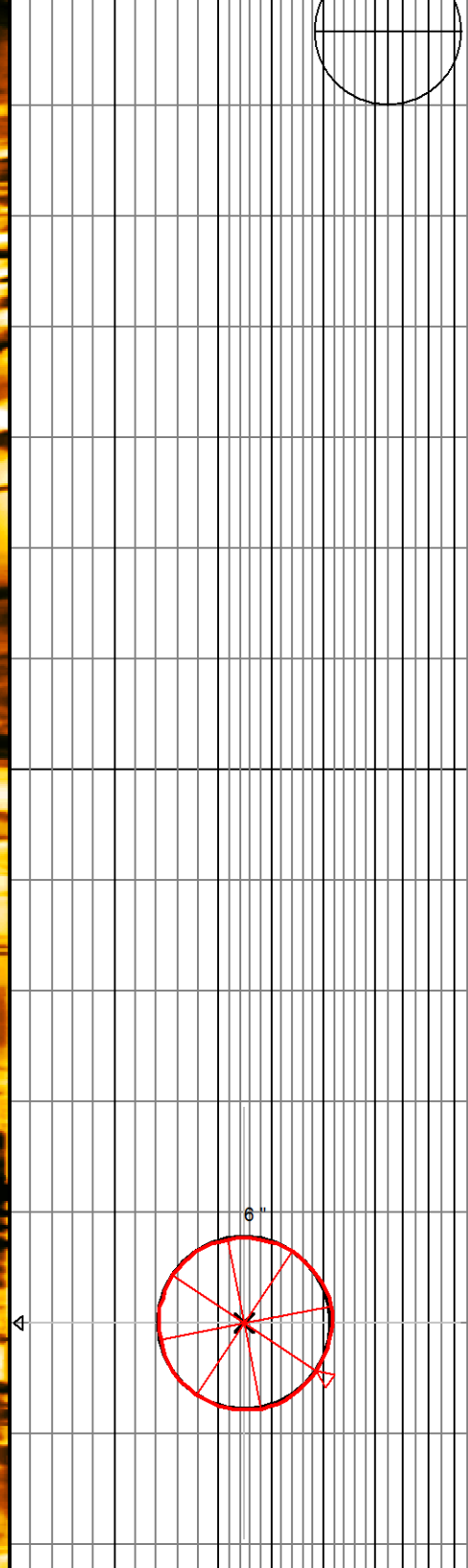
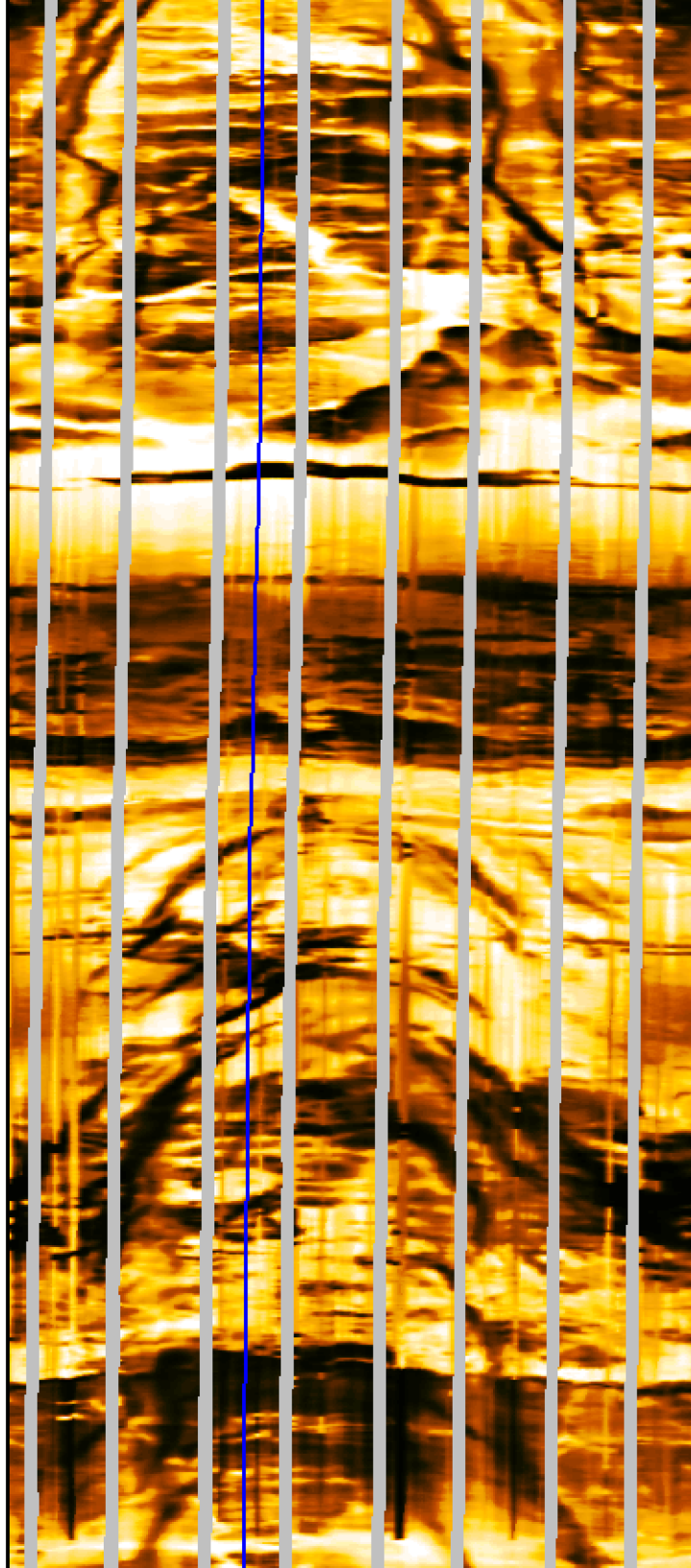
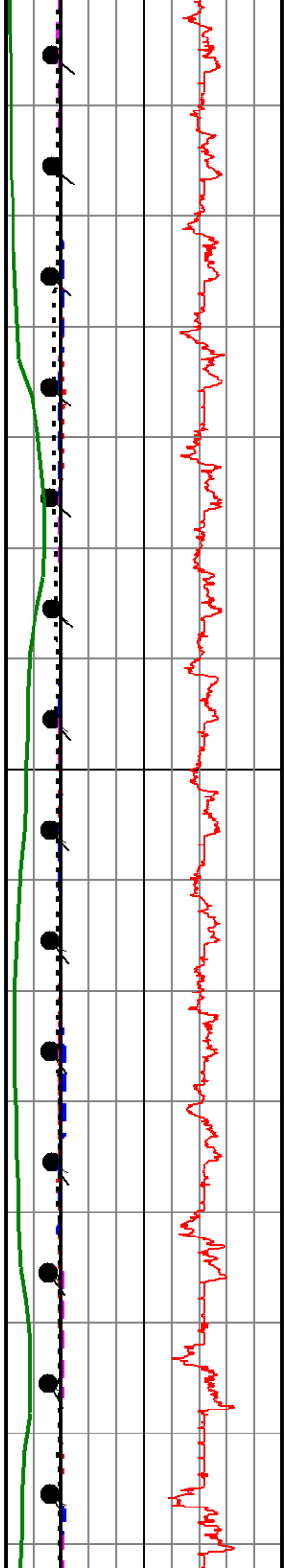


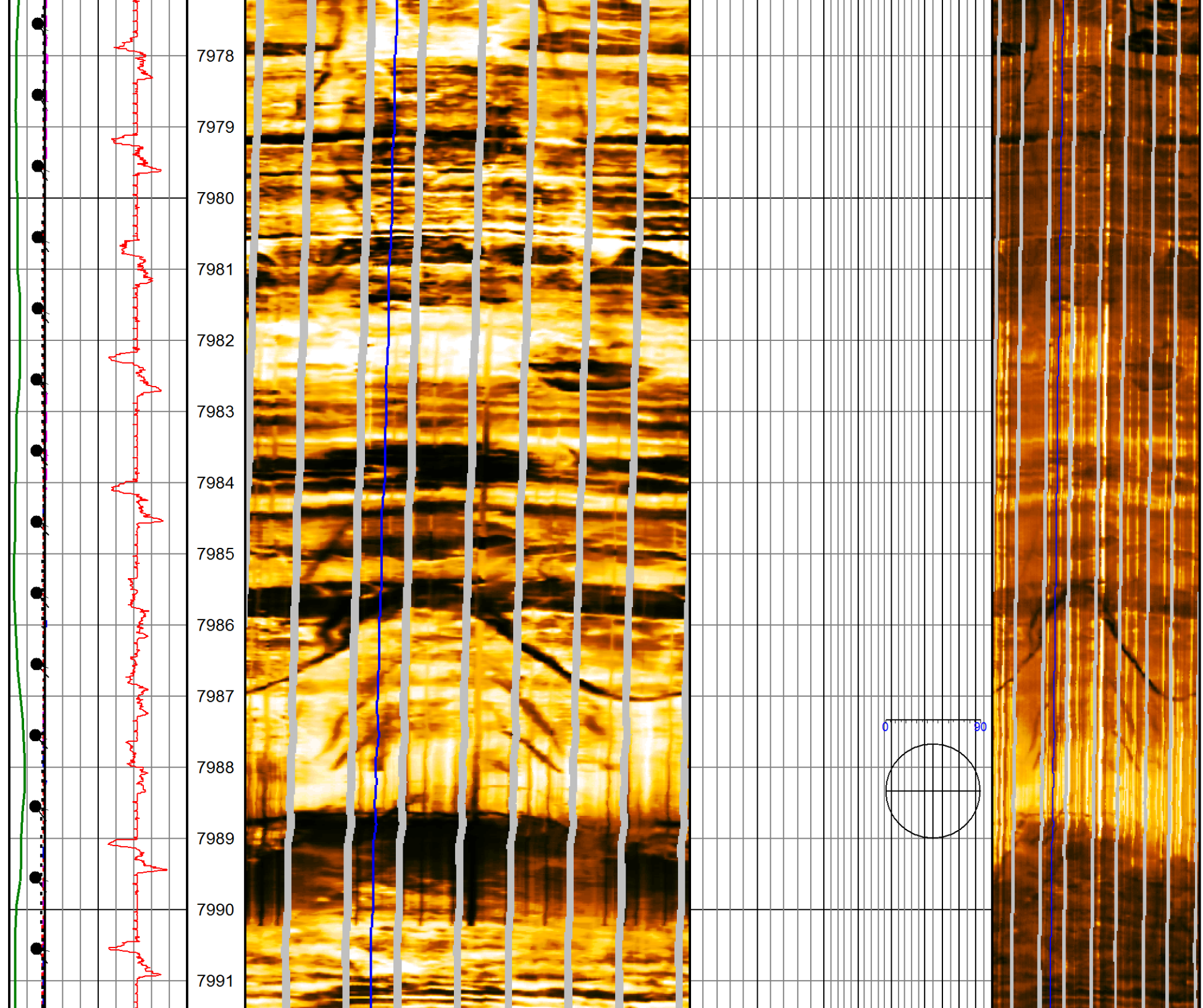


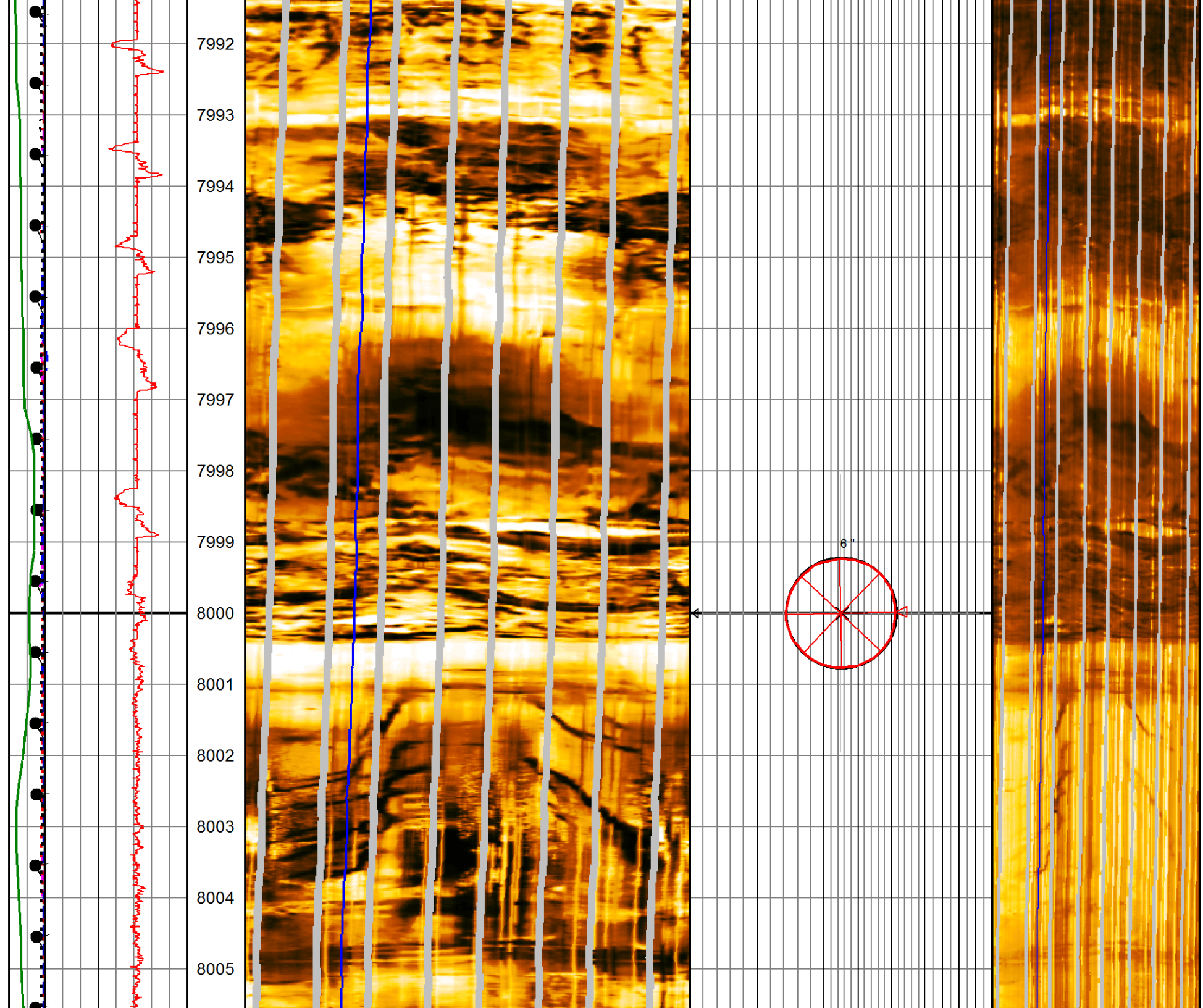
7949
7950
7951
7952
7953
7954
7955
7956
7957
7958
7959
7960
7961
7962
7963

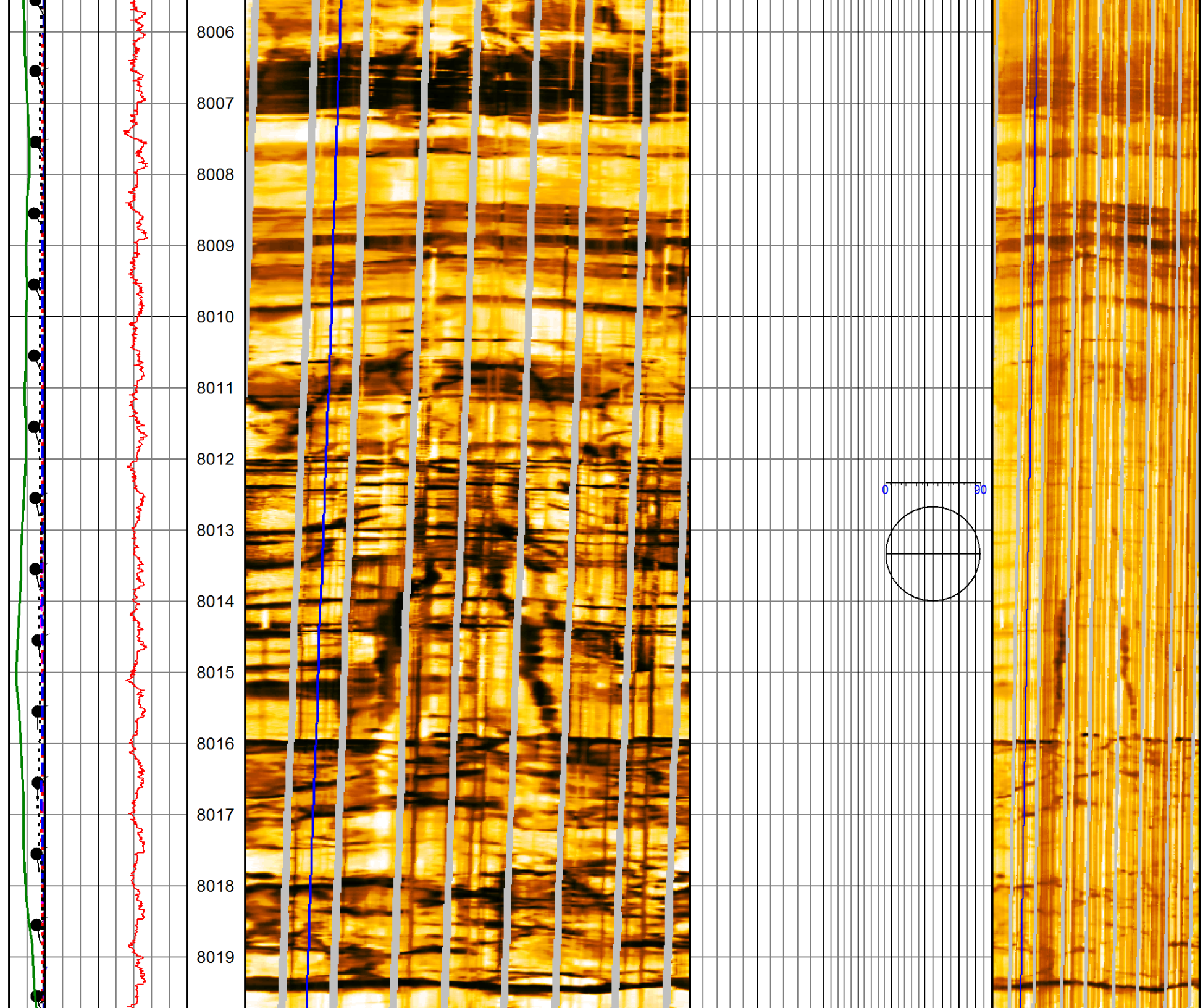


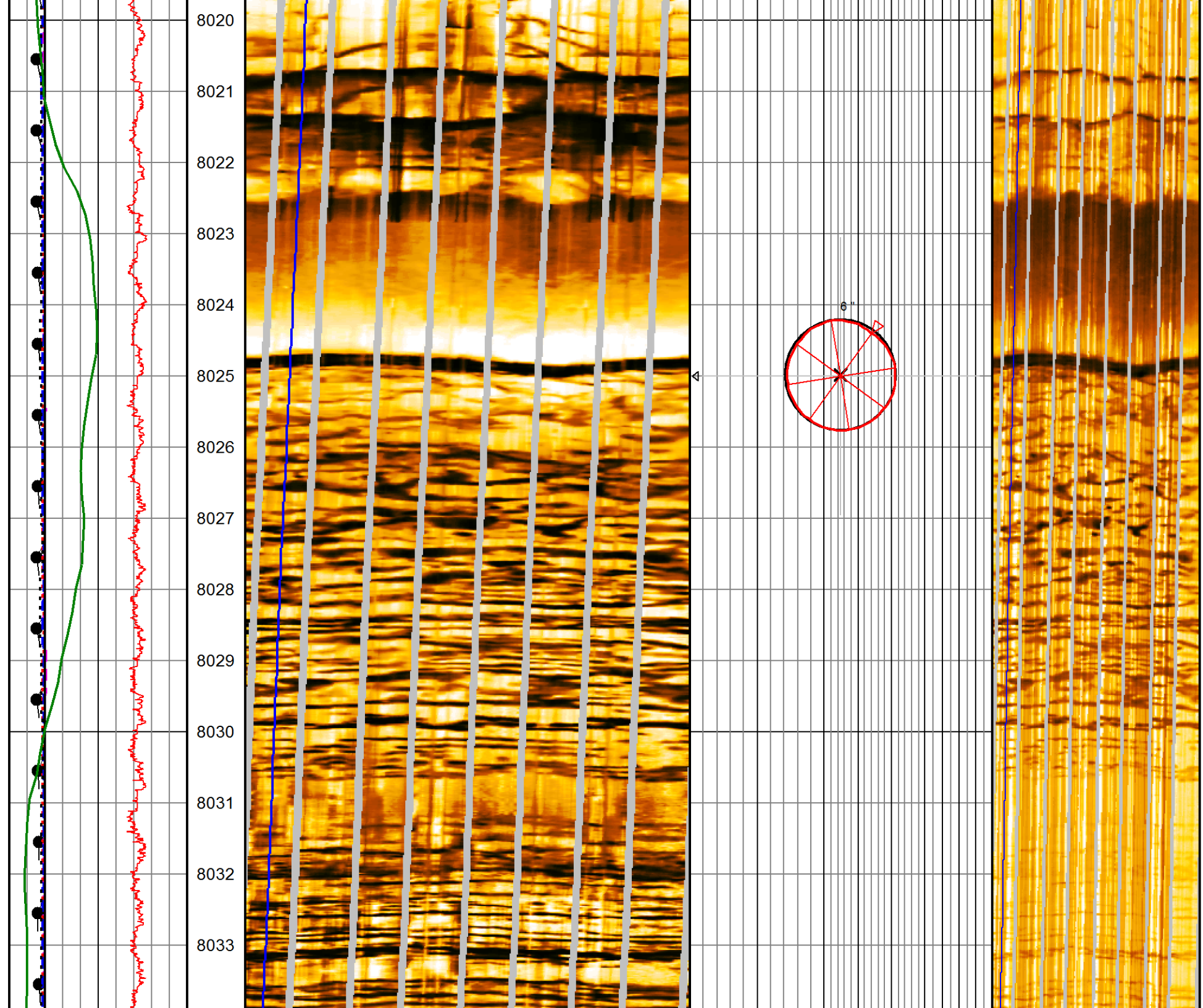
7963
7964
7965
7966
7967
7968
7969
7970
7971
7972
7973
7974
7975
7976
7977

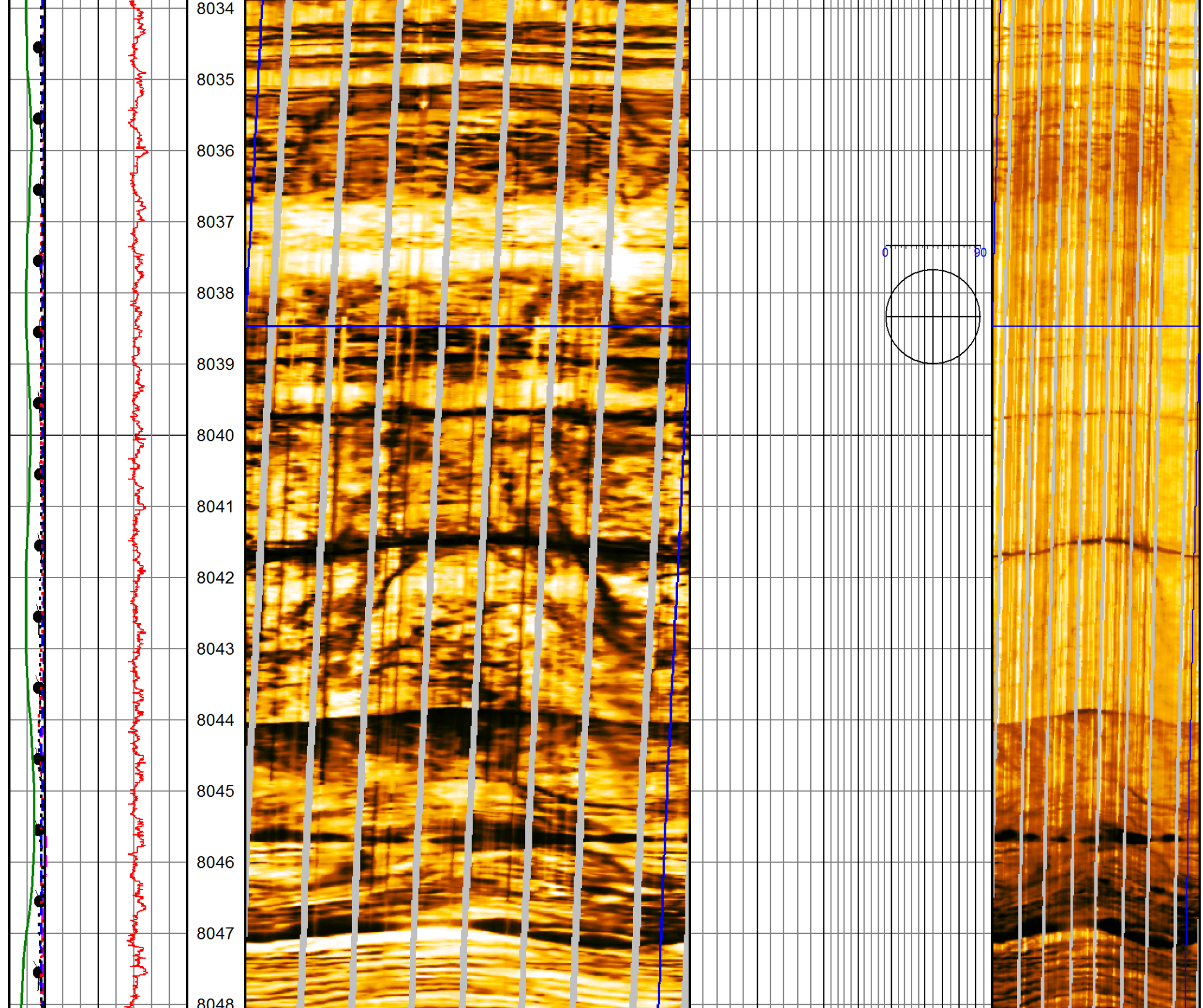




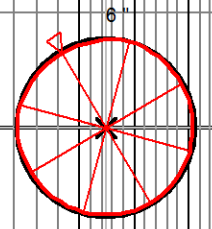
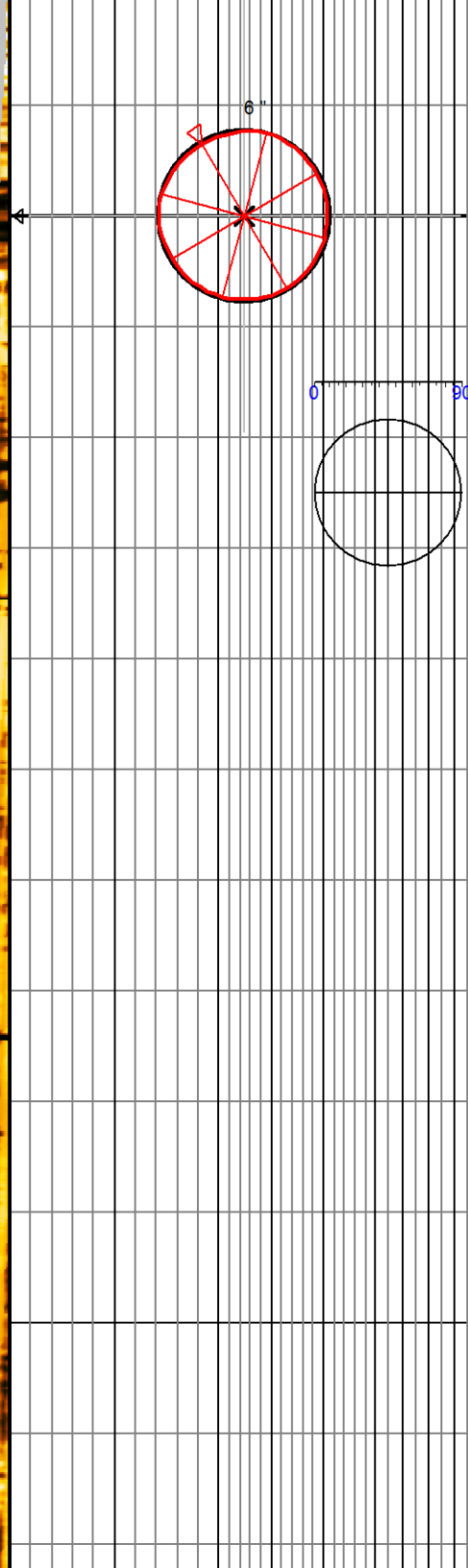
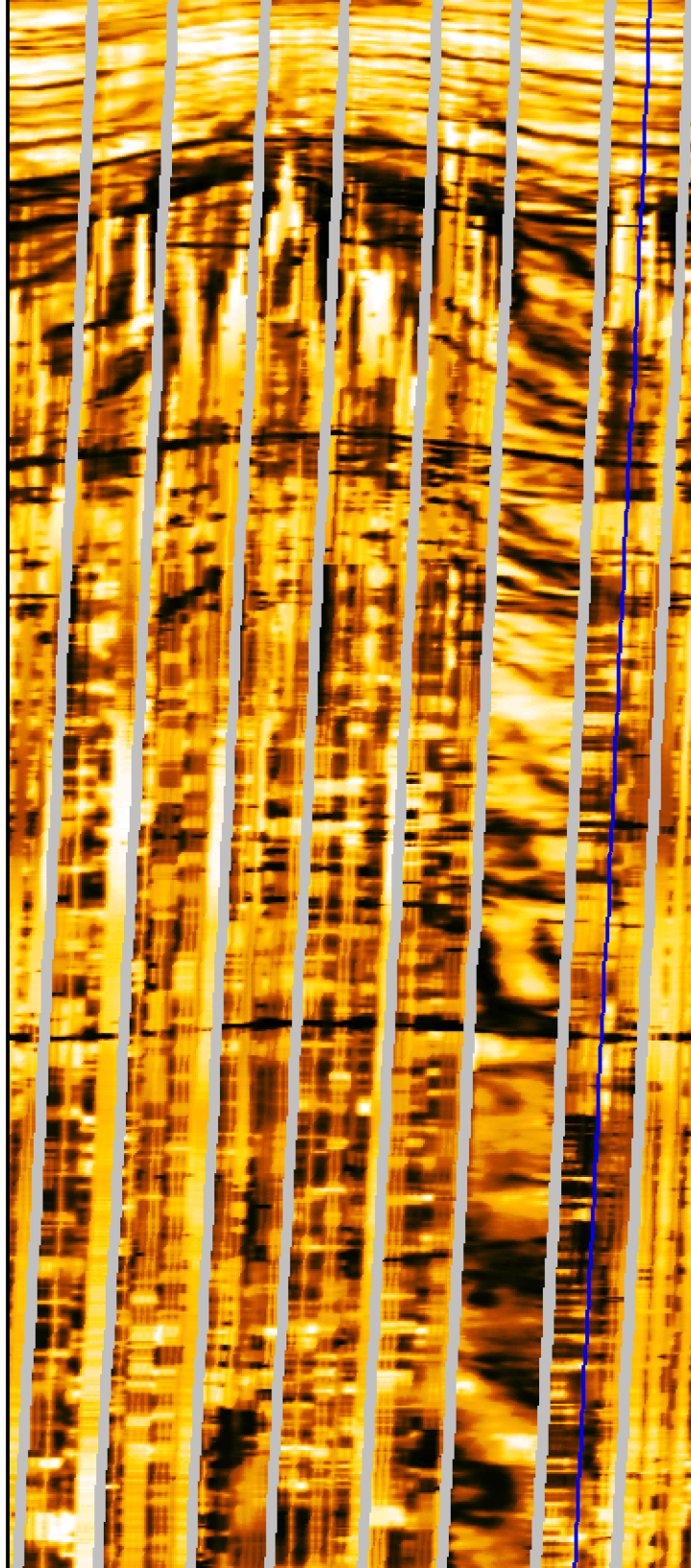




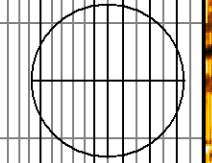


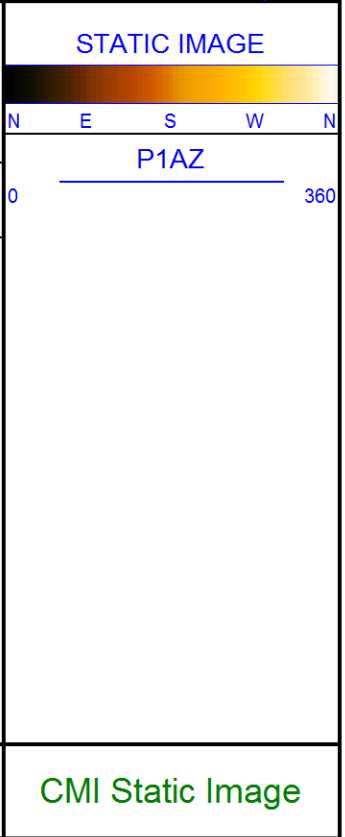
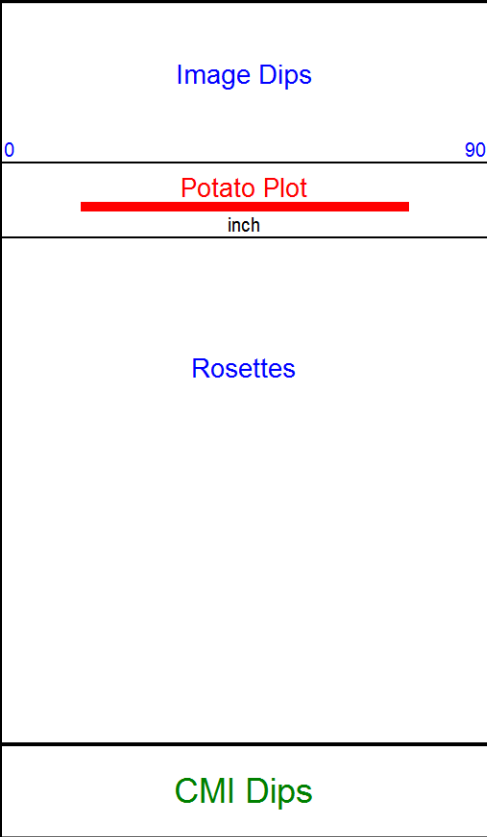
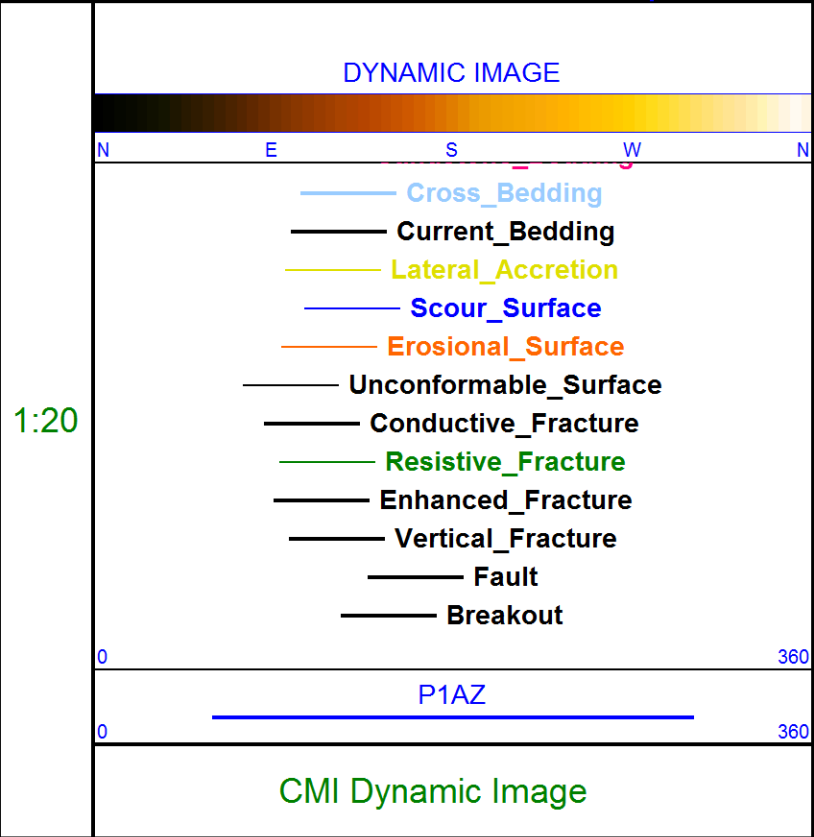
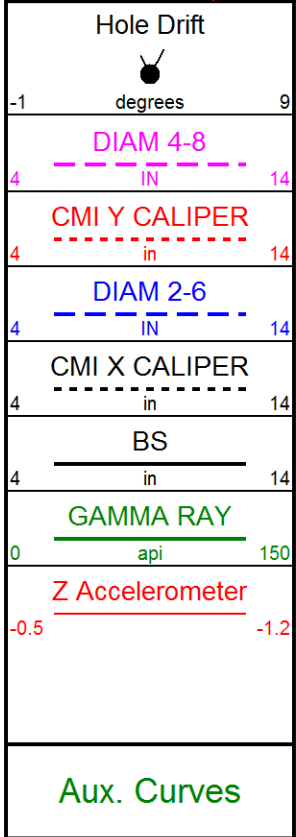
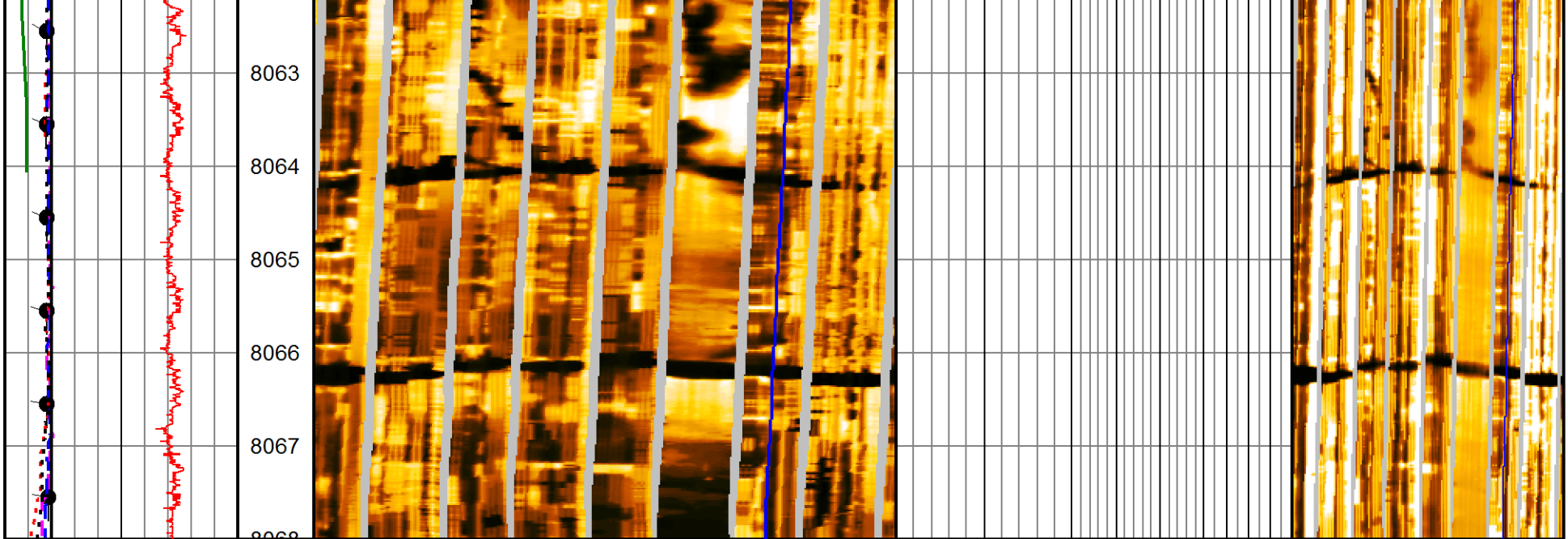


8049
8050
8051
8052
8053
8054
8055
8056
8057
8058
8059
8060
8061
8062



0 80





WELL:

GOODMAN POINT #26

FIELD:

MCELMO DOME

COUNTY:

MONTEZUMA

STATE:

COLORADO



Weatherford[®]

Compact Micro-Imager
Image Only