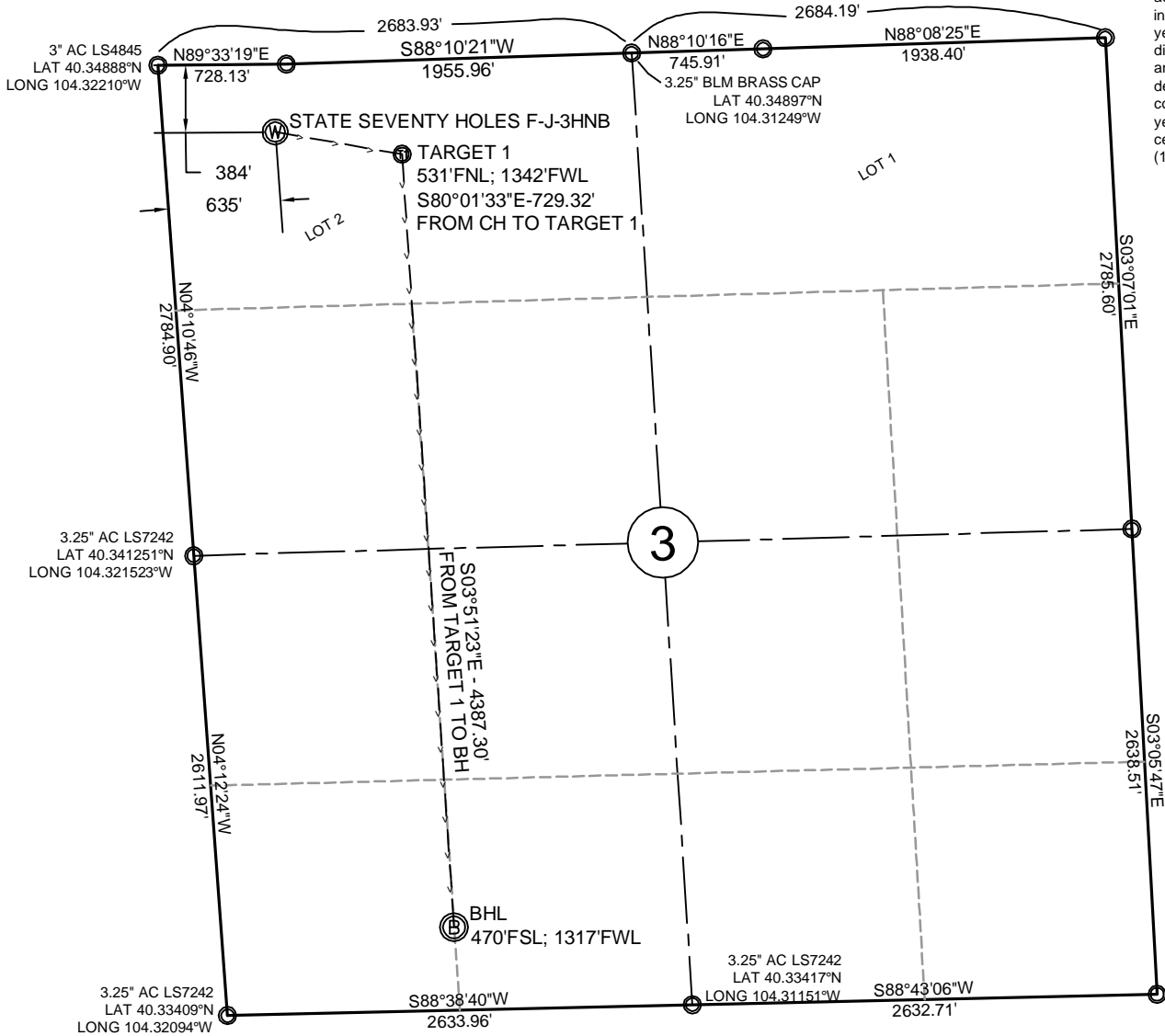


# T4N, R62W, 6th PM

NOTE: Under Colorado law, you must commence any legal action based upon any defect in this certificate within three years after defect is discovered. In no event, may any action based upon any defect in this survey be commenced more than ten years after date of this certificate shown hereon. (13-80105 C.R.S.)



## NOTES:

- All bearings are GRID based upon the Colorado State Plane Coordinate System, North Zone, NAD83(2011) derived from post-processed static GPS observations.
- Distances are at GROUND
- Vertical Datum is NAVD88 based upon GPS observations
- PDOP value equals 1.6.
- GPS operator: Dave Fehring.
- Undisturbed ground elevation at wellhead = 4533.9'

## CERTIFICATE OF SURVEYOR

I, David A. Fehring of Lander, Wyoming hereby certify that this well location certificate was prepared from notes taken during an actual survey on SEPTEMBER 29, 2013, and that it correctly shows the drilling location of BONANZA CREEK ENERGY, INC., STATE SEVENTY HOLES F-J-3HNB as staked during said survey. This map does not represent a boundary survey or an improvement location plat and should not be used for the establishment of boundary lines.

### SURFACE LOCATION: (NAD83)

GEODETIC COORDINATES  
LAT 40.347820°  
LONG 104.319754°

### STATE PLANE (CO-N NAD83)

N=1,371,741 ft  
E=3,328,954 ft

### TARGET #1: (NAD83)

GEODETIC COORDINATES  
LAT 40.347447°  
LONG 104.31714°

### STATE PLANE (CO-N NAD83)

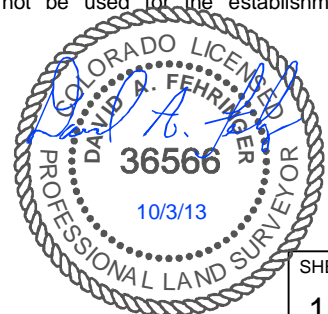
N=1,371,614 ft  
E=3,329,672 ft

### BOTTOM HOLE LOCATION: (NAD83)

GEODETIC COORDINATES  
LAT 40.335421°  
LONG 104.316335°

### STATE PLANE (CO-N NAD83)

N=1,367,237 ft  
E=3,329,967 ft

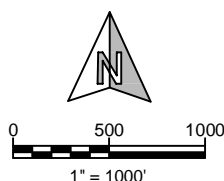


SHEET NO:

1 of 1



Drawn By: DAF  
Checked By: DAF  
Date: 10/3/12  
Revision: #2  
Date: 10/16/12  
Explanation: Add ground elevations to well certification



## WELL LOCATION CERTIFICATE

STATE SEVENTY  
HOLES F-J-3HNB  
384' FNL, 635' FWL  
NW¼NW¼, SECTION 3,  
T.4N., R.62W., 6th PM  
WELD COUNTY, COLORADO

