

Location:	COLORADO	Slot:	SLOT#12 MAVERICK 28N-13HZ (303'FSL & 2145'FEL, SEC.13)
Field:	WELD COUNTY (KERR MCGEE)	Well:	MAVERICK 28N-13HZ
Facility:	SEC.13-T3N-R66W	Wellbore:	MAVERICK 28N-13HZ PWB

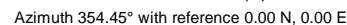
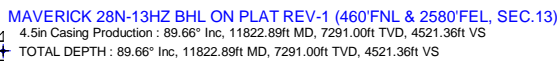
Plot reference wellpath is MAVERICK 28N-13HZ (PERMIT REV-1) PWP	
True vertical depths are referenced to PERMIT (17RKB) (RKB)	Grid System: NAD83 / Lambert Colorado SP, Northern Zone (501), US feet
Measured depths are referenced to PERMIT (17RKB) (RKB)	North Reference: True north
PERMIT (17RKB) (RKB) to Mean Sea Level: 5076 feet	Scale: True distance
Mean Sea Level to Mud line (At Slot: SLOTH12 MAVERICK 28N-13HZ (303FSL & 2145FEL, SEC.13): 0 feet	Depths are in feet
Coordinates are in feet referenced to Skot	Created by: robale01 on 15/Nov/2013

Facility Name			Grid East (US ft)	Grid North (US ft)	Latitude	Longitude
SEC.13-T3N-R66W			3217047.322	1323895.667	40°13'11.568"N	104°43'21.864"W
Slot	Local N (ft)	Local E (ft)	Grid East (US ft)	Grid North (US ft)	Latitude	Longitude
SLOT#12 MAVERICK 28N-13HZ (303FSL & 2145 FEL, SEC.13)	-359.54	-193.55	3216856.942	1323534.457	40°13'08.015"N	104°43'24.359"W
PERMIT (17RKB) (RKB) to Mud line (A Slot: SLOT#12 MAVERICK 28N-13HZ (303FSL & 2145 FEL, SEC.13))					5076R	
Mean Sea Level to Mud line (A Slot: SLOT#12 MAVERICK 28N-13HZ (303FSL & 2145 FEL, SEC.13))					0R	
PERMIT (17RKB) (RKB) to Mean Sea Level					5076R	

Start MD (ft)	End MD (ft)	Tool	Model	Log Name/Comment	Wellbore
17.00	11822.89	NaviTrak	NaviTrak (MagCorr)		MAVERICK 28N-13HZ PWB

Name	MD (ft)	TVD (ft)	Local N (ft)	Local E (ft)	Grid East (US ft)	Grid North (US ft)	Latitude	Longitude
MAVERICK 28H 134C B/L ON PLAT REV-1 (460FNE & 2580FEL SEC 13)	11822.89	7291.00	4500.19	-436.96	3216380.61	1328020.45	40°13'52.486"N	104°43'29.903"W
MAVERICK 28H 134C LANDBOX		7291.00	0.00	0.00	3216896.94	1323534.46	40°13'08.015"N	104°43'24.369"W
SEC 13 TYP REW HORIZ LINES (460 SETBACKS)		7291.00	0.00	0.00	3216896.94	1323534.46	40°13'08.015"N	104°43'24.369"W
SEC 13 TYP REW SECTION LINES		7300.00	0.00	0.00	3216896.94	1323534.46	40°13'08.015"N	104°43'24.369"W

Design Comment	MD (ft)	Inc (")	Az (")	TVD (ft)	Local N (ft)	Local E (ft)	DLS (°/100ft)	VS (ft)
TIE ON	17.00	0.000	239.080	17.00	0.00	0.00	0.00	0.00
BEGIN NUDGE	1414.00	0.000	239.080	1414.00	0.00	0.00	0.00	0.00
END NUDGE	1914.00	10.000	239.080	1911.47	-22.36	-37.34	2.00	-18.65
BEGIN DROP	4334.30	10.000	239.080	4295.00	-238.32	-397.89	0.00	-198.75
END DROP	4834.30	0.000	359.979	4792.47	-260.69	-435.23	2.00	-217.40
KOP, BUILD @ 10°/100'	6734.89	0.000	359.979	6693.06	-260.69	-435.23	0.00	-217.40
LANDING POINT	7631.48	89.658	359.979	7266.00	308.86	-435.44	10.00	349.49
TOTAL DEPTH	11822.89	89.658	359.979	7291.00	4500.19	-436.96	0.00	4521.36





# Planned Wellpath Report

MAVERICK 28N-13HZ (PERMIT REV-1) PWP

Page 1 of 6



## REFERENCE WELLPATH IDENTIFICATION

Operator	KERR-MCGEE OIL & GAS ONSHORE LP	Slot	SLOT#12 MAVERICK 28N-13HZ (303'FSL & 2145'FEL, SEC.13
Area	COLORADO	Well	MAVERICK 28N-13HZ
Field	WELD COUNTY (KERR MCGEE)	Wellbore	MAVERICK 28N-13HZ PWB
Facility	SEC.13-T3N-R66W		

## REPORT SETUP INFORMATION

Projection System	NAD83 / Lambert Colorado SP, Northern Zone (501), US feet	Software System	WellArchitect® 4.0.0
North Reference	True	User	Robiale01
Scale	0.999957	Report Generated	15/Nov/2013 at 13:56
Convergence at slot	n/a	Database/Source file	WellArchitectDB/MAVERICK_28N-13HZ_PWB.xml

## WELLPATH LOCATION

	Local coordinates		Grid coordinates		Geographic coordinates	
	North[ft]	East[ft]	Easting[US ft]	Northing[US ft]	Latitude	Longitude
Slot Location	-359.54	-193.55	3216856.94	1323534.46	40°13'08.015"N	104°43'24.359"W
Facility Reference Pt			3217047.32	1323895.67	40°13'11.568"N	104°43'21.864"W
Field Reference Pt			3197771.84	1268891.29	40°04'09.600"N	104°47'36.000"W

## WELLPATH DATUM

Calculation method	Minimum curvature	PERMIT (17'RKB) (RKB) to Facility Vertical Datum	5076.00ft
Horizontal Reference Pt	Slot	PERMIT (17'RKB) (RKB) to Mean Sea Level	5076.00ft
Vertical Reference Pt	PERMIT (17'RKB) (RKB)	PERMIT (17'RKB) (RKB) to Mud Line at Slot (SLOT#12 MAVERICK 28N-13HZ (303'FSL & 2145'FEL, SEC.13))	5076.00ft
MD Reference Pt	PERMIT (17'RKB) (RKB)	Section Origin	N 0.00, E 0.00 ft
Field Vertical Reference	Mean Sea Level	Section Azimuth	354.45°

## REFERENCE WELLPATH IDENTIFICATION

Operator	KERR-MCGEE OIL & GAS ONSHORE LP	Slot	SLOT#12 MAVERICK 28N-13HZ (303'FSL & 2145'FEL, SEC.13
Area	COLORADO	Well	MAVERICK 28N-13HZ
Field	WELD COUNTY (KERR MCGEE)	Wellbore	MAVERICK 28N-13HZ PWB
Facility	SEC.13-T3N-R66W		

## WELLPATH DATA (134 stations) † = interpolated/extrapolated station

MD [ft]	Inclination [°]	Azimuth [°]	TVD [ft]	Vert Sect [ft]	North [ft]	East [ft]	Latitude	Longitude	DLS [°/100ft]	Comments
0.00†	0.000	239.080	0.00	0.00	0.00	0.00	40°13'08.015"N	104°43'24.359"W	0.00	
17.00	0.000	239.080	17.00	0.00	0.00	0.00	40°13'08.015"N	104°43'24.359"W	0.00	TIE ON
117.00†	0.000	239.080	117.00	0.00	0.00	0.00	40°13'08.015"N	104°43'24.359"W	0.00	
217.00†	0.000	239.080	217.00	0.00	0.00	0.00	40°13'08.015"N	104°43'24.359"W	0.00	
317.00†	0.000	239.080	317.00	0.00	0.00	0.00	40°13'08.015"N	104°43'24.359"W	0.00	
417.00†	0.000	239.080	417.00	0.00	0.00	0.00	40°13'08.015"N	104°43'24.359"W	0.00	
517.00†	0.000	239.080	517.00	0.00	0.00	0.00	40°13'08.015"N	104°43'24.359"W	0.00	
617.00†	0.000	239.080	617.00	0.00	0.00	0.00	40°13'08.015"N	104°43'24.359"W	0.00	
717.00†	0.000	239.080	717.00	0.00	0.00	0.00	40°13'08.015"N	104°43'24.359"W	0.00	
817.00†	0.000	239.080	817.00	0.00	0.00	0.00	40°13'08.015"N	104°43'24.359"W	0.00	
917.00†	0.000	239.080	917.00	0.00	0.00	0.00	40°13'08.015"N	104°43'24.359"W	0.00	
1017.00†	0.000	239.080	1017.00	0.00	0.00	0.00	40°13'08.015"N	104°43'24.359"W	0.00	
1117.00†	0.000	239.080	1117.00	0.00	0.00	0.00	40°13'08.015"N	104°43'24.359"W	0.00	
1217.00†	0.000	239.080	1217.00	0.00	0.00	0.00	40°13'08.015"N	104°43'24.359"W	0.00	
1264.00†	0.000	239.080	1264.00	0.00	0.00	0.00	40°13'08.015"N	104°43'24.359"W	0.00	FOX HILLS MARKER
1317.00†	0.000	239.080	1317.00	0.00	0.00	0.00	40°13'08.015"N	104°43'24.359"W	0.00	
1414.00	0.000	239.080	1414.00	0.00	0.00	0.00	40°13'08.015"N	104°43'24.359"W	0.00	BEGIN NUDGE
1417.00†	0.060	239.080	1417.00	0.00	0.00	0.00	40°13'08.015"N	104°43'24.359"W	2.00	
1517.00†	2.060	239.080	1516.98	-0.79	-0.95	-1.59	40°13'08.006"N	104°43'24.379"W	2.00	
1617.00†	4.060	239.080	1616.83	-3.08	-3.69	-6.17	40°13'07.978"N	104°43'24.439"W	2.00	
1717.00†	6.060	239.080	1716.44	-6.86	-8.23	-13.73	40°13'07.934"N	104°43'24.536"W	2.00	
1817.00†	8.060	239.080	1815.67	-12.13	-14.54	-24.28	40°13'07.871"N	104°43'24.672"W	2.00	
1914.00	10.000	239.080	1911.47	-18.65	-22.36	-37.34	40°13'07.794"N	104°43'24.840"W	2.00	END NUDGE
1917.00†	10.000	239.080	1914.42	-18.87	-22.63	-37.78	40°13'07.791"N	104°43'24.846"W	0.00	
2017.00†	10.000	239.080	2012.90	-26.32	-31.55	-52.68	40°13'07.703"N	104°43'25.038"W	0.00	
2117.00†	10.000	239.080	2111.38	-33.76	-40.48	-67.58	40°13'07.615"N	104°43'25.230"W	0.00	
2217.00†	10.000	239.080	2209.86	-41.20	-49.40	-82.48	40°13'07.527"N	104°43'25.422"W	0.00	
2317.00†	10.000	239.080	2308.34	-48.64	-58.32	-97.37	40°13'07.439"N	104°43'25.614"W	0.00	
2417.00†	10.000	239.080	2406.82	-56.08	-67.25	-112.27	40°13'07.350"N	104°43'25.806"W	0.00	
2517.00†	10.000	239.080	2505.30	-63.52	-76.17	-127.17	40°13'07.262"N	104°43'25.998"W	0.00	
2617.00†	10.000	239.080	2603.79	-70.96	-85.09	-142.06	40°13'07.174"N	104°43'26.190"W	0.00	
2717.00†	10.000	239.080	2702.27	-78.40	-94.01	-156.96	40°13'07.086"N	104°43'26.382"W	0.00	
2817.00†	10.000	239.080	2800.75	-85.85	-102.94	-171.86	40°13'06.998"N	104°43'26.574"W	0.00	
2917.00†	10.000	239.080	2899.23	-93.29	-111.86	-186.75	40°13'06.910"N	104°43'26.766"W	0.00	
3017.00†	10.000	239.080	2997.71	-100.73	-120.78	-201.65	40°13'06.821"N	104°43'26.958"W	0.00	
3117.00†	10.000	239.080	3096.19	-108.17	-129.70	-216.55	40°13'06.733"N	104°43'27.150"W	0.00	
3217.00†	10.000	239.080	3194.67	-115.61	-138.63	-231.45	40°13'06.645"N	104°43'27.343"W	0.00	
3317.00†	10.000	239.080	3293.15	-123.05	-147.55	-246.34	40°13'06.557"N	104°43'27.535"W	0.00	
3417.00†	10.000	239.080	3391.63	-130.49	-156.47	-261.24	40°13'06.469"N	104°43'27.727"W	0.00	
3517.00†	10.000	239.080	3490.11	-137.93	-165.40	-276.14	40°13'06.381"N	104°43'27.919"W	0.00	
3617.00†	10.000	239.080	3588.59	-145.38	-174.32	-291.03	40°13'06.292"N	104°43'28.111"W	0.00	
3717.00†	10.000	239.080	3687.07	-152.82	-183.24	-305.93	40°13'06.204"N	104°43'28.303"W	0.00	
3817.00†	10.000	239.080	3785.55	-160.26	-192.16	-320.83	40°13'06.116"N	104°43'28.495"W	0.00	
3917.00†	10.000	239.080	3884.04	-167.70	-201.09	-335.72	40°13'06.028"N	104°43'28.687"W	0.00	
4017.00†	10.000	239.080	3982.52	-175.14	-210.01	-350.62	40°13'05.940"N	104°43'28.879"W	0.00	

## REFERENCE WELLPATH IDENTIFICATION

Operator	KERR-MCGEE OIL & GAS ONSHORE LP	Slot	SLOT#12 MAVERICK 28N-13HZ (303'FSL & 2145'FEL, SEC.13
Area	COLORADO	Well	MAVERICK 28N-13HZ
Field	WELD COUNTY (KERR MCGEE)	Wellbore	MAVERICK 28N-13HZ PWB
Facility	SEC.13-T3N-R66W		

## WELLPATH DATA (134 stations) † = interpolated/extrapolated station

MD [ft]	Inclination [°]	Azimuth [°]	TVD [ft]	Vert Sect [ft]	North [ft]	East [ft]	Latitude	Longitude	DLS [°/100ft]	Comments
4117.00†	10.000	239.080	4081.00	-182.58	-218.93	-365.52	40°13'05.851"N	104°43'29.071"W	0.00	
4131.22†	10.000	239.080	4095.00	-183.64	-220.20	-367.64	40°13'05.839"N	104°43'29.098"W	0.00	PARKMAN
4217.00†	10.000	239.080	4179.48	-190.02	-227.85	-380.42	40°13'05.763"N	104°43'29.263"W	0.00	
4317.00†	10.000	239.080	4277.96	-197.46	-236.78	-395.31	40°13'05.675"N	104°43'29.455"W	0.00	
4334.30	10.000	239.080	4295.00	-198.75	-238.32	-397.89	40°13'05.660"N	104°43'29.488"W	0.00	BEGIN DROP
4417.00†	8.346	239.080	4376.64	-204.40	-245.10	-409.20	40°13'05.593"N	104°43'29.634"W	2.00	
4517.00†	6.346	239.080	4475.81	-209.88	-251.66	-420.17	40°13'05.528"N	104°43'29.775"W	2.00	
4520.21†	6.282	239.080	4479.00	-210.03	-251.85	-420.47	40°13'05.526"N	104°43'29.779"W	2.00	SUSSEX
4617.00†	4.346	239.080	4575.37	-213.87	-256.45	-428.16	40°13'05.481"N	104°43'29.878"W	2.00	
4717.00†	2.346	239.080	4675.19	-216.37	-259.45	-433.17	40°13'05.451"N	104°43'29.943"W	2.00	
4817.00†	0.346	239.080	4775.16	-217.38	-260.66	-435.18	40°13'05.439"N	104°43'29.969"W	2.00	
4834.30	0.000	359.979	4792.47	-217.40	-260.69	-435.23	40°13'05.439"N	104°43'29.969"W	2.00	END DROP
4917.00†	0.000	359.979	4875.16	-217.40	-260.69	-435.23	40°13'05.439"N	104°43'29.969"W	0.00	
5017.00†	0.000	359.979	4975.16	-217.40	-260.69	-435.23	40°13'05.439"N	104°43'29.969"W	0.00	
5117.00†	0.000	359.979	5075.16	-217.40	-260.69	-435.23	40°13'05.439"N	104°43'29.969"W	0.00	
5217.00†	0.000	359.979	5175.16	-217.40	-260.69	-435.23	40°13'05.439"N	104°43'29.969"W	0.00	
5317.00†	0.000	359.979	5275.16	-217.40	-260.69	-435.23	40°13'05.439"N	104°43'29.969"W	0.00	
5417.00†	0.000	359.979	5375.16	-217.40	-260.69	-435.23	40°13'05.439"N	104°43'29.969"W	0.00	
5517.00†	0.000	359.979	5475.16	-217.40	-260.69	-435.23	40°13'05.439"N	104°43'29.969"W	0.00	
5617.00†	0.000	359.979	5575.16	-217.40	-260.69	-435.23	40°13'05.439"N	104°43'29.969"W	0.00	
5717.00†	0.000	359.979	5675.16	-217.40	-260.69	-435.23	40°13'05.439"N	104°43'29.969"W	0.00	
5817.00†	0.000	359.979	5775.16	-217.40	-260.69	-435.23	40°13'05.439"N	104°43'29.969"W	0.00	
5917.00†	0.000	359.979	5875.16	-217.40	-260.69	-435.23	40°13'05.439"N	104°43'29.969"W	0.00	
6017.00†	0.000	359.979	5975.16	-217.40	-260.69	-435.23	40°13'05.439"N	104°43'29.969"W	0.00	
6117.00†	0.000	359.979	6075.16	-217.40	-260.69	-435.23	40°13'05.439"N	104°43'29.969"W	0.00	
6217.00†	0.000	359.979	6175.16	-217.40	-260.69	-435.23	40°13'05.439"N	104°43'29.969"W	0.00	
6317.00†	0.000	359.979	6275.16	-217.40	-260.69	-435.23	40°13'05.439"N	104°43'29.969"W	0.00	
6417.00†	0.000	359.979	6375.16	-217.40	-260.69	-435.23	40°13'05.439"N	104°43'29.969"W	0.00	
6517.00†	0.000	359.979	6475.16	-217.40	-260.69	-435.23	40°13'05.439"N	104°43'29.969"W	0.00	
6617.00†	0.000	359.979	6575.16	-217.40	-260.69	-435.23	40°13'05.439"N	104°43'29.969"W	0.00	
6634.89†	0.000	359.979	6593.05	-217.40	-260.69	-435.23	40°13'05.439"N	104°43'29.969"W	0.00	4.5" CASING LINER
6717.00†	0.000	359.979	6675.16	-217.40	-260.69	-435.23	40°13'05.439"N	104°43'29.969"W	0.00	
6734.89	0.000	359.979	6693.06	-217.40	-260.69	-435.23	40°13'05.439"N	104°43'29.969"W	0.00	KOP, BUILD @ 10°/100'
6817.00†	8.211	359.979	6774.88	-211.56	-254.81	-435.23	40°13'05.497"N	104°43'29.969"W	10.00	
6917.00†	18.211	359.979	6872.11	-188.84	-231.99	-435.24	40°13'05.722"N	104°43'29.970"W	10.00	
7017.00†	28.211	359.979	6963.90	-149.66	-192.63	-435.25	40°13'06.111"N	104°43'29.970"W	10.00	
7117.00†	38.211	359.979	7047.46	-95.21	-137.92	-435.27	40°13'06.652"N	104°43'29.970"W	10.00	
7217.00†	48.211	359.979	7120.25	-27.15	-69.54	-435.30	40°13'07.328"N	104°43'29.970"W	10.00	
7263.83†	52.894	359.979	7150.00	8.84	-33.39	-435.31	40°13'07.685"N	104°43'29.971"W	10.00	SHARON SPRINGS
7317.00†	58.211	359.979	7180.06	52.46	10.44	-435.33	40°13'08.118"N	104°43'29.971"W	10.00	
7370.31†	63.541	359.979	7206.00	98.80	56.99	-435.34	40°13'08.578"N	104°43'29.971"W	10.00	NIOBRARA A
7417.00†	68.211	359.979	7225.08	141.20	99.59	-435.36	40°13'08.999"N	104°43'29.971"W	10.00	
7517.00†	78.211	359.979	7253.93	236.37	195.21	-435.39	40°13'09.944"N	104°43'29.972"W	10.00	
7538.96†	80.406	359.979	7258.00	257.85	216.78	-435.40	40°13'10.157"N	104°43'29.972"W	10.00	NIOBRARA B
7617.00†	88.211	359.979	7265.73	335.08	294.38	-435.43	40°13'10.924"N	104°43'29.972"W	10.00	

## REFERENCE WELLPATH IDENTIFICATION

Operator	KERR-MCGEE OIL & GAS ONSHORE LP	Slot	SLOT#12 MAVERICK 28N-13HZ (303'FSL & 2145'FEL, SEC.13
Area	COLORADO	Well	MAVERICK 28N-13HZ
Field	WELD COUNTY (KERR MCGEE)	Wellbore	MAVERICK 28N-13HZ PWB
Facility	SEC.13-T3N-R66W		

## WELLPATH DATA (134 stations) † = interpolated/extrapolated station

MD [ft]	Inclination [°]	Azimuth [°]	TVD [ft]	Vert Sect [ft]	North [ft]	East [ft]	Latitude	Longitude	DLS [°/100ft]	Comments
7631.48	89.658	359.979	7266.00	349.49	308.86	-435.44	40°13'11.067"N	104°43'29.972"W	10.00	LANDING POINT
7717.00†	89.658	359.979	7266.51	434.62	394.38	-435.47	40°13'11.912"N	104°43'29.973"W	0.00	
7817.00†	89.658	359.979	7267.11	534.15	494.37	-435.50	40°13'12.900"N	104°43'29.973"W	0.00	
7917.00†	89.658	359.979	7267.71	633.68	594.37	-435.54	40°13'13.889"N	104°43'29.974"W	0.00	
8017.00†	89.658	359.979	7268.30	733.22	694.37	-435.58	40°13'14.877"N	104°43'29.974"W	0.00	
8117.00†	89.658	359.979	7268.90	832.75	794.37	-435.61	40°13'15.865"N	104°43'29.975"W	0.00	
8217.00†	89.658	359.979	7269.49	932.28	894.37	-435.65	40°13'16.853"N	104°43'29.975"W	0.00	
8317.00†	89.658	359.979	7270.09	1031.82	994.37	-435.68	40°13'17.841"N	104°43'29.976"W	0.00	
8417.00†	89.658	359.979	7270.69	1131.35	1094.36	-435.72	40°13'18.829"N	104°43'29.976"W	0.00	
8517.00†	89.658	359.979	7271.28	1230.88	1194.36	-435.76	40°13'19.818"N	104°43'29.977"W	0.00	
8617.00†	89.658	359.979	7271.88	1330.42	1294.36	-435.79	40°13'20.806"N	104°43'29.977"W	0.00	
8717.00†	89.658	359.979	7272.48	1429.95	1394.36	-435.83	40°13'21.794"N	104°43'29.978"W	0.00	
8817.00†	89.658	359.979	7273.07	1529.49	1494.36	-435.87	40°13'22.782"N	104°43'29.978"W	0.00	
8917.00†	89.658	359.979	7273.67	1629.02	1594.36	-435.90	40°13'23.770"N	104°43'29.979"W	0.00	
9017.00†	89.658	359.979	7274.27	1728.55	1694.35	-435.94	40°13'24.758"N	104°43'29.979"W	0.00	
9117.00†	89.658	359.979	7274.86	1828.09	1794.35	-435.97	40°13'25.747"N	104°43'29.980"W	0.00	
9217.00†	89.658	359.979	7275.46	1927.62	1894.35	-436.01	40°13'26.735"N	104°43'29.980"W	0.00	
9317.00†	89.658	359.979	7276.06	2027.15	1994.35	-436.05	40°13'27.723"N	104°43'29.980"W	0.00	
9417.00†	89.658	359.979	7276.65	2126.69	2094.35	-436.08	40°13'28.711"N	104°43'29.981"W	0.00	
9517.00†	89.658	359.979	7277.25	2226.22	2194.34	-436.12	40°13'29.699"N	104°43'29.981"W	0.00	
9617.00†	89.658	359.979	7277.84	2325.75	2294.34	-436.16	40°13'30.688"N	104°43'29.982"W	0.00	
9717.00†	89.658	359.979	7278.44	2425.29	2394.34	-436.19	40°13'31.676"N	104°43'29.982"W	0.00	
9817.00†	89.658	359.979	7279.04	2524.82	2494.34	-436.23	40°13'32.664"N	104°43'29.983"W	0.00	
9917.00†	89.658	359.979	7279.63	2624.36	2594.34	-436.27	40°13'33.652"N	104°43'29.983"W	0.00	
10017.00†	89.658	359.979	7280.23	2723.89	2694.34	-436.30	40°13'34.640"N	104°43'29.984"W	0.00	
10117.00†	89.658	359.979	7280.83	2823.42	2794.33	-436.34	40°13'35.628"N	104°43'29.984"W	0.00	
10217.00†	89.658	359.979	7281.42	2922.96	2894.33	-436.37	40°13'36.617"N	104°43'29.985"W	0.00	
10317.00†	89.658	359.979	7282.02	3022.49	2994.33	-436.41	40°13'37.605"N	104°43'29.985"W	0.00	
10417.00†	89.658	359.979	7282.62	3122.02	3094.33	-436.45	40°13'38.593"N	104°43'29.986"W	0.00	
10517.00†	89.658	359.979	7283.21	3221.56	3194.33	-436.48	40°13'39.581"N	104°43'29.986"W	0.00	
10617.00†	89.658	359.979	7283.81	3321.09	3294.32	-436.52	40°13'40.569"N	104°43'29.987"W	0.00	
10717.00†	89.658	359.979	7284.40	3420.62	3394.32	-436.56	40°13'41.557"N	104°43'29.987"W	0.00	
10817.00†	89.658	359.979	7285.00	3520.16	3494.32	-436.59	40°13'42.546"N	104°43'29.988"W	0.00	
10917.00†	89.658	359.979	7285.60	3619.69	3594.32	-436.63	40°13'43.534"N	104°43'29.988"W	0.00	
11017.00†	89.658	359.979	7286.19	3719.23	3694.32	-436.67	40°13'44.522"N	104°43'29.989"W	0.00	
11117.00†	89.658	359.979	7286.79	3818.76	3794.32	-436.70	40°13'45.510"N	104°43'29.989"W	0.00	
11217.00†	89.658	359.979	7287.39	3918.29	3894.31	-436.74	40°13'46.498"N	104°43'29.990"W	0.00	
11317.00†	89.658	359.979	7287.98	4017.83	3994.31	-436.77	40°13'47.487"N	104°43'29.990"W	0.00	
11417.00†	89.658	359.979	7288.58	4117.36	4094.31	-436.81	40°13'48.475"N	104°43'29.991"W	0.00	
11517.00†	89.658	359.979	7289.18	4216.89	4194.31	-436.85	40°13'49.463"N	104°43'29.991"W	0.00	
11617.00†	89.658	359.979	7289.77	4316.43	4294.31	-436.88	40°13'50.451"N	104°43'29.992"W	0.00	
11717.00†	89.658	359.979	7290.37	4415.96	4394.31	-436.92	40°13'51.439"N	104°43'29.992"W	0.00	
11817.00†	89.658	359.979	7290.96	4515.49	4494.30	-436.96	40°13'52.427"N	104°43'29.993"W	0.00	
11822.89	89.658	359.979	7291.00 <sup>1</sup>	4521.36	4500.19	-436.96	40°13'52.486"N	104°43'29.993"W	0.00	TOTAL DEPTH





# Planned Wellpath Report

## MAVERICK 28N-13HZ (PERMIT REV-1) PWP

Page 5 of 6



### REFERENCE WELLPATH IDENTIFICATION

Operator	KERR-MCGEE OIL & GAS ONSHORE LP	Slot	SLOT#12 MAVERICK 28N-13HZ (303'FSL & 2145'FEL, SEC.13
Area	COLORADO	Well	MAVERICK 28N-13HZ
Field	WELD COUNTY (KERR MCGEE)	Wellbore	MAVERICK 28N-13HZ PWB
Facility	SEC.13-T3N-R66W		

### HOLE & CASING SECTIONS -

Ref Wellbore: MAVERICK 28N-13HZ PWB Ref Wellpath: MAVERICK 28N-13HZ (PERMIT REV-1) PWP

String/Diameter	Start MD [ft]	End MD [ft]	Interval [ft]	Start TVD [ft]	End TVD [ft]	Start N/S [ft]	Start E/W [ft]	End N/S [ft]	End E/W [ft]
13.5in Open Hole	17.00	1314.00	1297.00	17.00	1314.00	0.00	0.00	0.00	0.00
9.625in Casing Surface	17.00	1314.00	1297.00	17.00	1314.00	0.00	0.00	0.00	0.00
8.75in Open Hole	1314.00	7631.48	6317.48	1314.00	7266.00	0.00	0.00	308.86	-435.44
7in Casing Intermediate	17.00	7631.48	7614.48	17.00	7266.00	0.00	0.00	308.86	-435.44
6.125in Open Hole	7631.48	11822.89	4191.41	7266.00	7291.00	308.86	-435.44	4500.19	-436.96
4.5in Casing Production	17.00	11822.89	11805.89	17.00	7291.00	0.00	0.00	4500.19	-436.96

### TARGETS

Name	MD [ft]	TVD [ft]	North [ft]	East [ft]	Grid East [US ft]	Grid North [US ft]	Latitude	Longitude	Shape
1) MAVERICK 28N-13HZ BHL ON PLAT REV-1 (460'FNL & 2580'FEL, SEC.13)	11822.89	7291.00	4500.19	-436.96	3216380.61	1328030.45	40°13'52.486"N	104°43'29.993"W	point
MAVERICK 28N-13HZ LANDBOX		7291.00	0.00	0.00	3216856.94	1323534.46	40°13'08.015"N	104°43'24.359"W	polygon
SEC.13-T3N-R66W HARDLINES (460' SETBACKS)		7300.00	0.00	0.00	3216856.94	1323534.46	40°13'08.015"N	104°43'24.359"W	polygon
SEC.13-T3N-R66W SECTION LINES		7300.00	0.00	0.00	3216856.94	1323534.46	40°13'08.015"N	104°43'24.359"W	polygon

### SURVEY PROGRAM - Ref Wellbore: MAVERICK 28N-13HZ PWB Ref Wellpath: MAVERICK 28N-13HZ (PERMIT REV-1) PWP

Start MD [ft]	End MD [ft]	Positional Uncertainty Model	Log Name/Comment	Wellbore
17.00	11822.89	NaviTrak (MagCorr)		MAVERICK 28N-13HZ PWB

### REFERENCE WELLPATH IDENTIFICATION

Operator	KERR-MCGEE OIL & GAS ONSHORE LP	Slot	SLOT#12 MAVERICK 28N-13HZ (303'FSL & 2145'FEL, SEC.13
Area	COLORADO	Well	MAVERICK 28N-13HZ
Field	WELD COUNTY (KERR MCGEE)	Wellbore	MAVERICK 28N-13HZ PWB
Facility	SEC.13-T3N-R66W		

### WELLPATH COMMENTS

MD [ft]	Inclination [°]	Azimuth [°]	TVD [ft]	Comment
1264.00	0.000	239.080	1264.00	FOX HILLS MARKER
4131.22	10.000	239.080	4095.00	PARKMAN
4520.21	6.282	239.080	4479.00	SUSSEX
6634.89	0.000	359.979	6593.05	4.5" CASING LINER
7263.83	52.894	359.979	7150.00	SHARON SPRINGS
7370.31	63.541	359.979	7206.00	NIOBRARA A
7538.96	80.406	359.979	7258.00	NIOBRARA B

### DESIGN COMMENTS

MD [ft]	Inclination [°]	Azimuth [°]	TVD [ft]	Comment
17.00	0.000	239.080	17.00	TIE ON
1414.00	0.000	239.080	1414.00	BEGIN NUDGE
1914.00	10.000	239.080	1911.47	END NUDGE
4334.30	10.000	239.080	4295.00	BEGIN DROP
4834.30	0.000	359.979	4792.47	END DROP
6734.89	0.000	359.979	6693.06	KOP, BUILD @ 10°/100'
7631.48	89.658	359.979	7266.00	LANDING POINT
11822.89	89.658	359.979	7291.00	TOTAL DEPTH