



Well Name: Bohrer Trust 21-19

Surface Location: Bohrer Trust 21-19 Pad Sec.19-T3N-R68W
North American Datum 1983 US State Plane 1983 Colorado Northern Zone
Ground Elevation: 5084.0

+N/-S
0.0

+E/-W
0.0

Northing
1322461.19

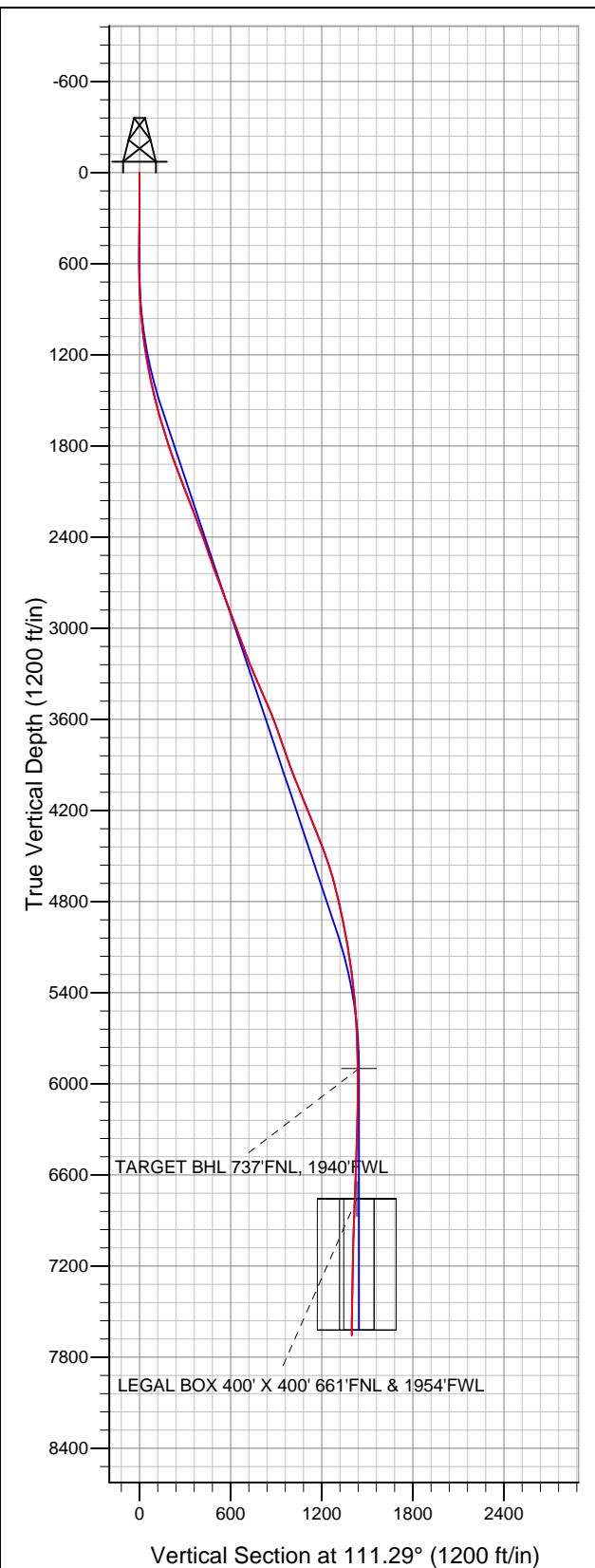
Easting
3124814.42

Latitude
40.217690

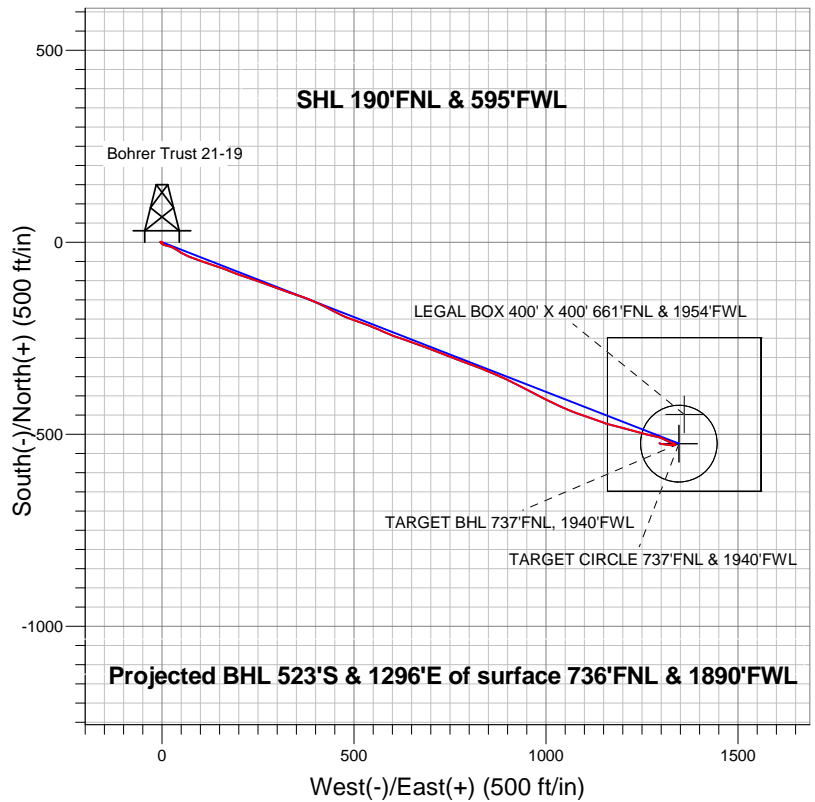
Longitude
-105.053050

Slot

Original Well Elev WELL @ 5097.0ft (Original Well Elev)



EnCana Oil & Gas Weld County CO



LEGEND

- ✕ Bohrer Trust 21-19, Wellbore #1, Plan #1 (1-08-13) V0
- Wellbore #1
- Survey #1

Final Survey Plot

Projected Final Survey -
7893'MD & 7657'TVD @ 1397'VS
0.72 deg Inc 321.4 deg AZ

Project: SEC.19-T3N-R68W
Site: Bohrer Trust 21-19 Pad Sec.19-T3N-R68W
Well: Bohrer Trust 21-19
Plan: Wellbore #1



EnCana Oil & Gas Weld County CO

SEC.19-T3N-R68W

Bohrer Trust 21-19 Pad Sec.19-T3N-R68W

Bohrer Trust 21-19

Wellbore #1

Survey: Survey #1

Standard Survey Report

19 April, 2013

Survey	Wellbore Data									
	Measured Depth (ft)	Inclination (°)	Azimuth (°)	Vertical Depth (ft)	+N/-S (ft)	+E/-W (ft)	Vertical Section (ft)	Dogleg Rate (°/100ft)	Build Rate (°/100ft)	Turn Rate (°/100ft)
Main Wellbore	0.0	0.00	0.00	0.0	0.0	0.0	0.0	0.00	0.00	0.00
	75.0	0.40	6.20	75.0	0.3	0.0	-0.1	0.53	0.53	0.00
	165.0	0.20	330.50	165.0	0.7	0.0	-0.3	0.29	-0.22	-39.67
	255.0	0.30	251.00	255.0	0.8	-0.3	-0.6	0.37	0.11	-88.33
	346.0	0.50	293.60	346.0	0.9	-0.9	-1.2	0.38	0.22	46.81
	436.0	1.10	268.60	436.0	1.0	-2.1	-2.3	0.76	0.67	-27.78
	527.0	1.00	257.50	527.0	0.8	-3.8	-3.8	0.25	-0.11	-12.20
	584.0	0.90	169.50	584.0	0.2	-4.2	-4.0	2.32	-0.18	-154.39
	697.0	1.50	136.10	696.9	-1.7	-3.0	-2.2	0.79	0.53	-29.56
	783.0	2.60	129.70	782.9	-3.7	-0.7	0.7	1.30	1.28	-7.44
	869.0	3.80	113.70	868.8	-6.1	3.4	5.4	1.73	1.40	-18.60
	954.0	5.30	108.30	953.5	-8.5	9.7	12.1	1.83	1.76	-6.35
1,040.0	6.30	101.30	1,039.0	-10.7	18.1	20.7	1.42	1.16	-8.14	

Company:	EnCana Oil & Gas Weld County CO	Local Co-ordinate Reference:	Well Bohrer Trust 21-19
Project:	SEC.19-T3N-R68W	TVD Reference:	WELL @ 5097.0ft (Original Well Elev)
Site:	Bohrer Trust 21-19 Pad Sec.19-T3N-R68W	MD Reference:	WELL @ 5097.0ft (Original Well Elev)
Well:	Bohrer Trust 21-19	North Reference:	True
Wellbore:	Wellbore #1	Survey Calculation Method:	Minimum Curvature
Design:	Wellbore #1	Database:	Landmark

Survey

Measured Depth (ft)	Inclination (°)	Azimuth (°)	Vertical Depth (ft)	+N/-S (ft)	+E/-W (ft)	Vertical Section (ft)	Dogleg Rate (°/100ft)	Build Rate (°/100ft)	Turn Rate (°/100ft)
1,126.0	7.70	116.90	1,124.4	-14.2	27.9	31.1	2.73	1.63	18.14
1,212.0	9.60	123.00	1,209.4	-20.7	39.0	43.9	2.45	2.21	7.09
1,297.0	11.20	119.40	1,293.0	-28.6	52.2	59.0	2.03	1.88	-4.24
1,383.0	12.10	114.40	1,377.3	-36.5	67.6	76.3	1.57	1.05	-5.81
1,469.0	13.20	108.50	1,461.2	-43.3	85.2	95.1	1.97	1.28	-6.86
1,555.0	14.90	109.70	1,544.6	-50.1	104.9	115.9	2.01	1.98	1.40
1,640.0	16.50	108.60	1,626.4	-57.7	126.6	138.9	1.91	1.88	-1.29
1,726.0	17.30	107.90	1,708.7	-65.5	150.4	163.9	0.96	0.93	-0.81
1,812.0	18.00	111.60	1,790.7	-74.3	174.9	189.9	1.54	0.81	4.30
1,898.0	19.40	111.10	1,872.1	-84.4	200.6	217.5	1.64	1.63	-0.58
1,983.0	20.80	108.20	1,951.9	-94.2	228.1	246.7	2.02	1.65	-3.41
2,069.0	21.10	109.30	2,032.3	-104.0	257.2	277.4	0.58	0.35	1.28
2,155.0	21.20	110.40	2,112.5	-114.6	286.4	308.4	0.48	0.12	1.28
2,240.0	21.00	110.40	2,191.8	-125.2	315.1	339.0	0.24	-0.24	0.00
2,326.0	20.30	107.40	2,272.2	-135.1	343.7	369.3	1.47	-0.81	-3.49
2,412.0	20.80	109.90	2,352.8	-144.7	372.3	399.5	1.17	0.58	2.91
2,498.0	19.80	115.30	2,433.4	-156.2	399.9	429.3	2.47	-1.16	6.28
2,583.0	18.70	115.80	2,513.7	-168.2	425.1	457.2	1.31	-1.29	0.59
2,669.0	20.40	118.80	2,594.7	-181.5	450.7	485.8	2.30	1.98	3.49
2,755.0	20.80	112.50	2,675.2	-194.5	477.9	516.0	2.62	0.47	-7.33
2,841.0	20.20	109.20	2,755.8	-205.3	506.1	546.1	1.51	-0.70	-3.84
2,926.0	20.10	110.00	2,835.6	-215.1	533.7	575.3	0.34	-0.12	0.94
3,012.0	21.70	114.10	2,915.9	-226.6	562.1	606.0	2.52	1.86	4.77
3,098.0	20.70	112.70	2,996.1	-239.0	590.6	637.1	1.30	-1.16	-1.63
3,183.0	19.60	109.20	3,075.9	-249.5	617.9	666.3	1.92	-1.29	-4.12
3,269.0	20.70	109.00	3,156.6	-259.2	645.9	695.9	1.28	1.28	-0.23
3,355.0	22.20	109.70	3,236.7	-269.6	675.6	727.4	1.77	1.74	0.81
3,441.0	23.60	111.60	3,315.9	-281.4	706.9	760.8	1.84	1.63	2.21
3,526.0	23.20	110.70	3,393.9	-293.6	738.4	794.6	0.63	-0.47	-1.06
3,612.0	23.60	111.30	3,472.8	-305.8	770.3	828.7	0.54	0.47	0.70
3,698.0	22.50	110.60	3,552.0	-317.9	801.7	862.4	1.32	-1.28	-0.81
3,784.0	20.80	111.40	3,631.9	-329.2	831.3	894.1	2.01	-1.98	0.93
3,869.0	19.20	111.80	3,711.8	-339.9	858.4	923.2	1.89	-1.88	0.47
3,955.0	18.60	115.80	3,793.1	-351.2	883.8	951.0	1.66	-0.70	4.65
4,041.0	19.30	116.20	3,874.5	-363.4	908.9	978.8	0.83	0.81	0.47
4,127.0	21.40	115.80	3,955.1	-376.5	935.8	1,008.7	2.45	2.44	-0.47
4,212.0	22.50	118.80	4,034.0	-391.1	964.0	1,040.2	1.85	1.29	3.53
4,298.0	21.80	116.90	4,113.6	-406.2	992.7	1,072.4	1.16	-0.81	-2.21
4,384.0	22.30	115.00	4,193.3	-420.4	1,021.7	1,104.6	1.01	0.58	-2.21
4,469.0	21.90	112.90	4,272.1	-433.3	1,050.9	1,136.6	1.04	-0.47	-2.47
4,555.0	22.20	110.70	4,351.8	-445.3	1,080.9	1,168.8	1.02	0.35	-2.56
4,641.0	21.50	109.30	4,431.6	-456.3	1,111.0	1,200.8	1.01	-0.81	-1.63
4,727.0	19.10	109.50	4,512.3	-466.2	1,139.1	1,230.7	2.79	-2.79	0.23
4,812.0	16.60	106.90	4,593.2	-474.4	1,163.9	1,256.7	3.09	-2.94	-3.06
4,898.0	15.30	103.70	4,675.8	-480.6	1,186.6	1,280.2	1.82	-1.51	-3.72
4,984.0	14.10	103.20	4,759.0	-485.7	1,207.9	1,301.8	1.40	-1.40	-0.58
5,070.0	12.60	107.90	4,842.7	-491.0	1,227.0	1,321.5	2.15	-1.74	5.47
5,155.0	11.50	105.50	4,925.8	-496.1	1,244.0	1,339.2	1.42	-1.29	-2.82
5,241.0	10.70	102.70	5,010.2	-500.1	1,260.0	1,355.6	1.12	-0.93	-3.26
5,327.0	9.20	102.50	5,094.9	-503.4	1,274.5	1,370.3	1.74	-1.74	-0.23
5,413.0	8.90	104.60	5,179.9	-506.5	1,287.7	1,383.7	0.52	-0.35	2.44
5,498.0	7.30	107.60	5,264.0	-509.8	1,299.2	1,395.6	1.95	-1.88	3.53
5,584.0	6.90	117.60	5,349.4	-513.9	1,309.0	1,406.2	1.51	-0.47	11.63
5,670.0	5.20	120.40	5,434.9	-518.2	1,316.9	1,415.2	2.01	-1.98	3.26

Company:	EnCana Oil & Gas Weld County CO	Local Co-ordinate Reference:	Well Bohrer Trust 21-19
Project:	SEC.19-T3N-R68W	TVD Reference:	WELL @ 5097.0ft (Original Well Elev)
Site:	Bohrer Trust 21-19 Pad Sec.19-T3N-R68W	MD Reference:	WELL @ 5097.0ft (Original Well Elev)
Well:	Bohrer Trust 21-19	North Reference:	True
Wellbore:	Wellbore #1	Survey Calculation Method:	Minimum Curvature
Design:	Wellbore #1	Database:	Landmark

Survey										
Measured Depth (ft)	Inclination (°)	Azimuth (°)	Vertical Depth (ft)	+N/-S (ft)	+E/-W (ft)	Vertical Section (ft)	Dogleg Rate (°/100ft)	Build Rate (°/100ft)	Turn Rate (°/100ft)	
5,755.0	4.50	108.10	5,519.6	-521.2	1,323.4	1,422.3	1.47	-0.82	-14.47	
5,841.0	3.30	110.90	5,605.4	-523.2	1,328.9	1,428.2	1.41	-1.40	3.26	
5,927.0	2.20	110.70	5,691.3	-524.6	1,332.8	1,432.3	1.28	-1.28	-0.23	
6,013.0	1.40	122.30	5,777.2	-525.8	1,335.2	1,435.0	1.02	-0.93	13.49	
6,098.0	0.80	141.70	5,862.2	-526.8	1,336.5	1,436.5	0.82	-0.71	22.82	
6,135.8	0.61	155.94	5,900.0	-527.2	1,336.7	1,436.9	0.68	-0.50	37.70	
TARGET BHL 737'FNL, 1940'FWL										
6,270.0	0.70	243.60	6,034.2	-528.2	1,336.3	1,436.9	0.68	0.07	65.30	
6,441.0	1.30	262.10	6,205.2	-528.9	1,333.4	1,434.5	0.39	0.35	10.82	
6,613.0	1.60	272.60	6,377.1	-529.1	1,329.1	1,430.5	0.23	0.17	6.10	
6,784.0	2.10	280.20	6,548.0	-528.4	1,323.6	1,425.1	0.33	0.29	4.44	
6,956.0	2.30	281.30	6,719.9	-527.2	1,317.1	1,418.6	0.12	0.12	0.64	
6,992.0	2.21	279.47	6,755.8	-526.9	1,315.7	1,417.3	0.32	-0.25	-5.10	
LEGAL BOX 400' X 400' 661'FNL & 1954'FWL										
6,992.0	2.21	279.46	6,755.9	-526.9	1,315.7	1,417.3	0.32	-0.25	-5.31	
TARGET CIRCLE 737'FNL & 1940'FWL										
7,127.0	1.90	271.10	6,890.8	-526.5	1,310.9	1,412.6	0.32	-0.23	-6.20	
7,299.0	1.50	272.80	7,062.7	-526.3	1,305.8	1,407.8	0.23	-0.23	0.99	
7,470.0	1.30	278.30	7,233.7	-525.9	1,301.7	1,403.8	0.14	-0.12	3.22	
7,642.0	1.00	295.70	7,405.6	-525.0	1,298.4	1,400.4	0.27	-0.17	10.12	
7,813.0	0.50	311.00	7,576.6	-523.8	1,296.5	1,398.2	0.31	-0.29	8.95	
7,849.0	0.60	315.70	7,612.6	-523.6	1,296.2	1,397.9	0.30	0.28	13.06	
7,893.0	0.72	321.44	7,656.6	-523.2	1,295.9	1,397.4	0.31	0.27	13.05	

Checked By: _____	Approved By: _____	Date: _____
-------------------	--------------------	-------------