

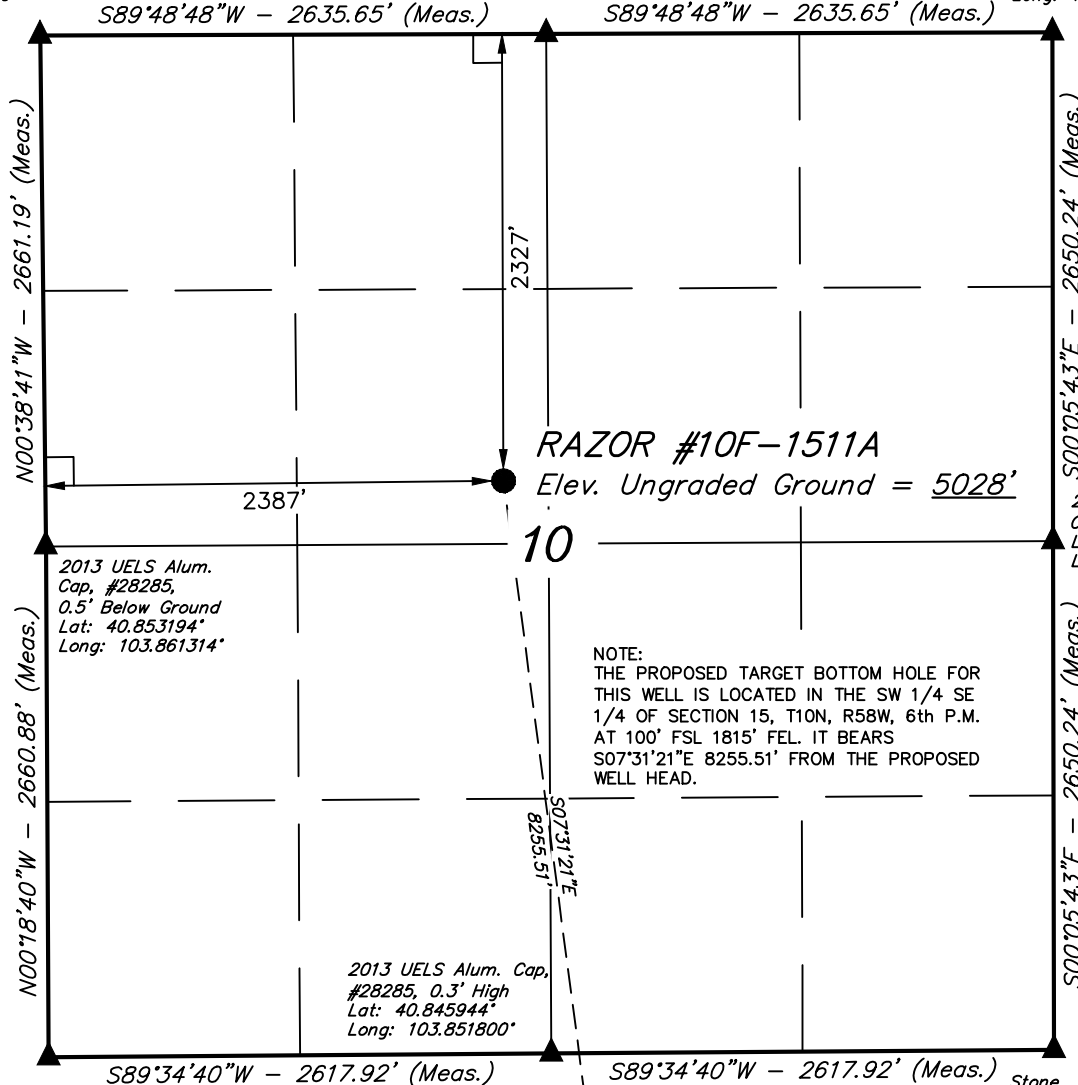
T10N, R58W, 6th P.M.

WHITING OIL & GAS CORP.

2013 UELS Alum. Cap,
#28285, 0.5' Below Ground
Lat: 40.860494°
Long: 103.861425°

2013 UELS Alum. Cap,
#28285, 0.3' High
Lat: 40.860519°
Long: 103.851900°

2012 UELS Alum.
Cap, 0.3' High
Lat: 40.860544°
Long: 103.842372°



2013 UELS Alum. Cap,
#28285, 0.3' High
Lat: 40.845892°
Long: 103.861261°

2013 UELS Alum. Cap,
#28285, 0.3' High
Lat: 40.845944°
Long: 103.851800°

Stone
Lat: 40.846000°
Long: 103.842342°

○ Target Bottom Hole

LEGEND:

- └─┘ = 90° SYMBOL
- = PROPOSED WELL HEAD.
- ▲ = SECTION CORNERS LOCATED.

PDOP = 1.6

NAD 83 (SURFACE LOCATION)	
LATITUDE	= 40°51'14.88" (40.854133)
LONGITUDE	= 103°51'09.73" (103.852703)
NAD 27 (SURFACE LOCATION)	
LATITUDE	= 40°51'14.93" (40.854147)
LONGITUDE	= 103°51'07.92" (103.852200)

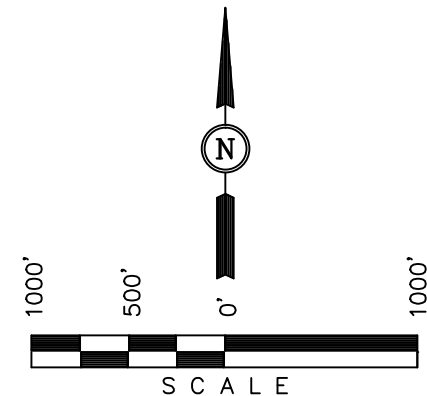
Well location, RAZOR #10F-1511A (SURFACE LOCATION), located as shown in the SE 1/4 NW 1/4 of Section 10, T10N, R58W, 6th P.M., Weld County, Colorado.

BASIS OF ELEVATION

SPOT ELEVATION LOCATED AT THE NORTHEAST CORNER OF SECTION 15, T9N, R58W, 6th P.M. TAKEN FROM THE GATEHOOK SPRING, QUADRANGLE, COLORADO, WELD COUNTY, 7.5 MINUTE QUAD (TOPOGRAPHIC MAP) PUBLISHED BY THE UNITED STATES DEPARTMENT OF THE INTERIOR, GEOLOGICAL SURVEY. SAID ELEVATION IS MARKED AS BEING 4679 FEET.

BASIS OF BEARINGS

BASIS OF BEARINGS IS A G.P.S. OBSERVATION.



CERTIFICATE

THIS IS TO CERTIFY THAT THE ABOVE PLAT WAS PREPARED FROM FIELD NOTES OF ACTUAL SURVEYS MADE BY ME OR UNDER MY SUPERVISION AND THAT THE SAME ARE TRUE AND CORRECT TO THE BEST OF MY KNOWLEDGE AND BELIEF.

REGISTERED LAND SURVEYOR
REGISTRATION NO. 17492 OR
STATE OF COLORADO
OF 09-17-13

REV: 07-08-13 B.D.H.
REV: 05-31-13 B.D.H.

UINTAH ENGINEERING & LAND SURVEYING
85 SOUTH 200 EAST - VERNAL, UTAH 84078
(435) 789-1017

SCALE 1" = 1000'	DATE SURVEYED: 05-08-13	DATE DRAWN: 05-13-13
PARTY D.N. G.W. J.S.	REFERENCES G.L.O. PLAT	
WEATHER WARM	FILE WHITING OIL & GAS CORP.	

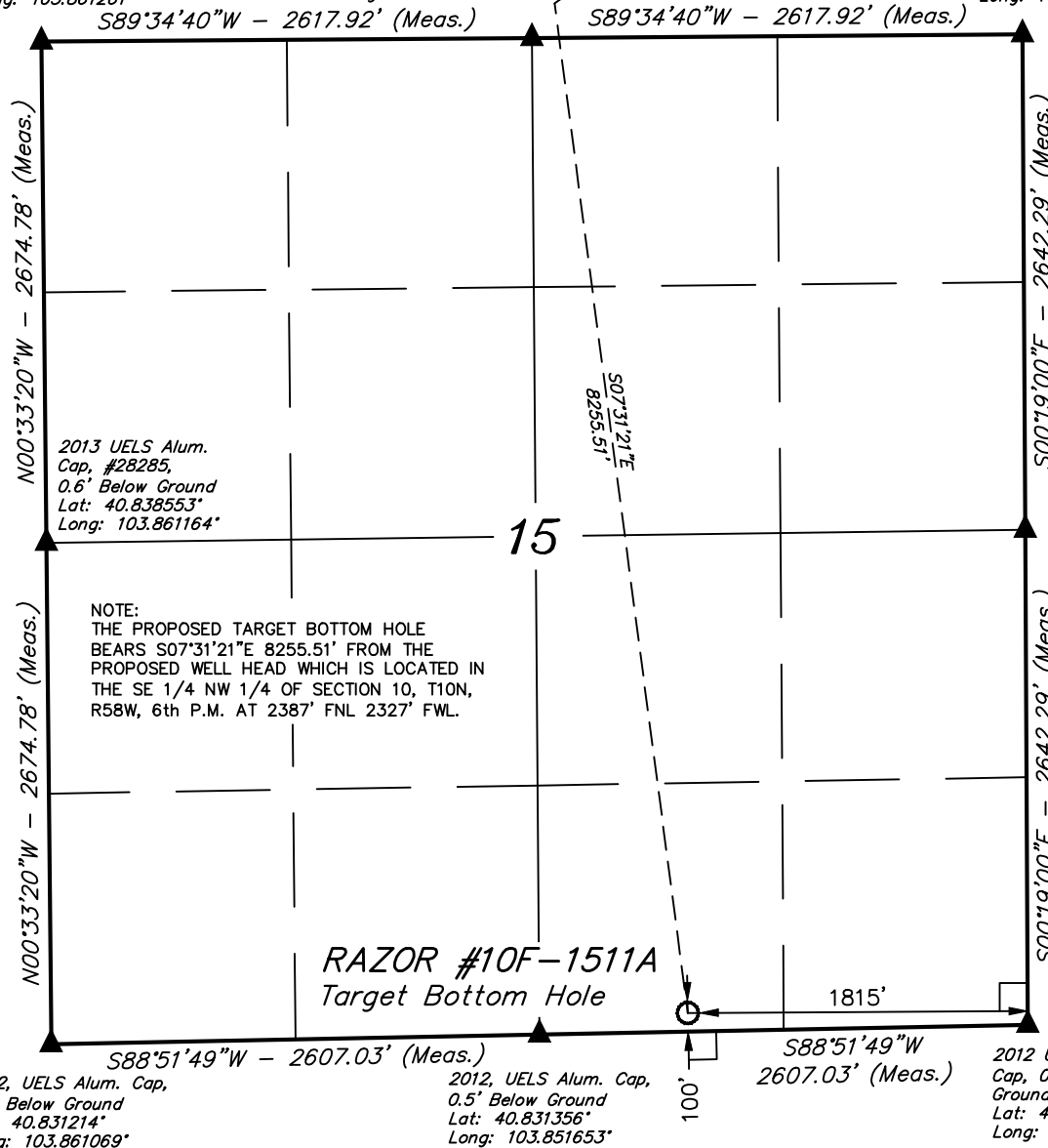
T10N, R58W, 6th P.M.

WHITING OIL & GAS CORP.

2013 UELS Alum.
Cap, #28285,
0.3' High
Lat: 40.845892°
Long: 103.861261°

2013 UELS Alum. Cap. ● Surface Location
#28285, 0.3' High
Lat: 40.845944°
Long: 103.851800°

Stone
Lat: 40.846000°
Long: 103.842342°



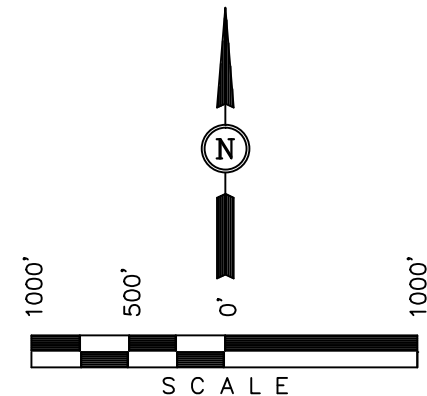
Well location, RAZOR #10F-1511A (TARGET BOTTOM HOLE), located as shown in the SW 1/4 SE 1/4 of Section 15, T10N, R58W, 6th P.M., Weld County, Colorado.

BASIS OF ELEVATION

SPOT ELEVATION LOCATED AT THE NORTHEAST CORNER OF SECTION 15, T9N, R58W, 6th P.M. TAKEN FROM THE GATEHOOK SPRING, QUADRANGLE, COLORADO, WELD COUNTY, 7.5 MINUTE QUAD (TOPOGRAPHIC MAP) PUBLISHED BY THE UNITED STATES DEPARTMENT OF THE INTERIOR, GEOLOGICAL SURVEY. SAID ELEVATION IS MARKED AS BEING 4679 FEET.

BASIS OF BEARINGS

BASIS OF BEARINGS IS A G.P.S. OBSERVATION.



CERTIFICATE

THIS IS TO CERTIFY THAT THE ABOVE PLAT WAS PREPARED FROM FIELD NOTES OF ACTUAL SURVEYS MADE BY ME OR UNDER MY SUPERVISION AND THAT THE SAME ARE TRUE AND CORRECT TO THE BEST OF MY KNOWLEDGE AND BELIEF.

REGISTERED LAND SURVEYOR
REGISTRATION NO. 17492
STATE OF COLORADO

REV: 07-08-13 B.D.H.
REV: 05-31-13 B.D.H.

2012, UELS Alum. Cap,
0.5' Below Ground
Lat: 40.831214°
Long: 103.861069°

2012, UELS Alum. Cap,
0.5' Below Ground
Lat: 40.831356°
Long: 103.851653°

2012 UELS Alum.
Cap, 0.5' Below
Ground
Lat: 40.831497°
Long: 103.842233°

LEGEND:

- └─┘ = 90° SYMBOL
- = PROPOSED WELL HEAD.
- ▲ = SECTION CORNERS LOCATED.

NAD 83 (TARGET BOTTOM HOLE)
LATITUDE = 40°49'54.02" (40.831672)
LONGITUDE = 103°50'55.66" (103.848794)
NAD 27 (TARGET BOTTOM HOLE)
LATITUDE = 40°49'54.08" (40.831689)
LONGITUDE = 103°50'53.85" (103.848292)

UINTAH ENGINEERING & LAND SURVEYING
85 SOUTH 200 EAST - VERNAL, UTAH 84078
(435) 789-1017

SCALE 1" = 1000'	DATE SURVEYED: 05-08-13	DATE DRAWN: 05-13-13
PARTY D.N. G.W. J.S.	REFERENCES G.L.O. PLAT	
WEATHER WARM	FILE WHITING OIL & GAS CORP.	