

**T10N, R58W, 6th P.M.**

**WHITING OIL & GAS CORP.**

2013 UELS Alum. Cap,  
#28285, 0.5' Below Ground  
Lat: 40.860494°  
Long: 103.861425°

2013 UELS Alum. Cap,  
#28285, 0.3' High  
Lat: 40.860519°  
Long: 103.851900°

2012 UELS Alum.  
Cap, 0.3' High  
Lat: 40.860544°  
Long: 103.842372°

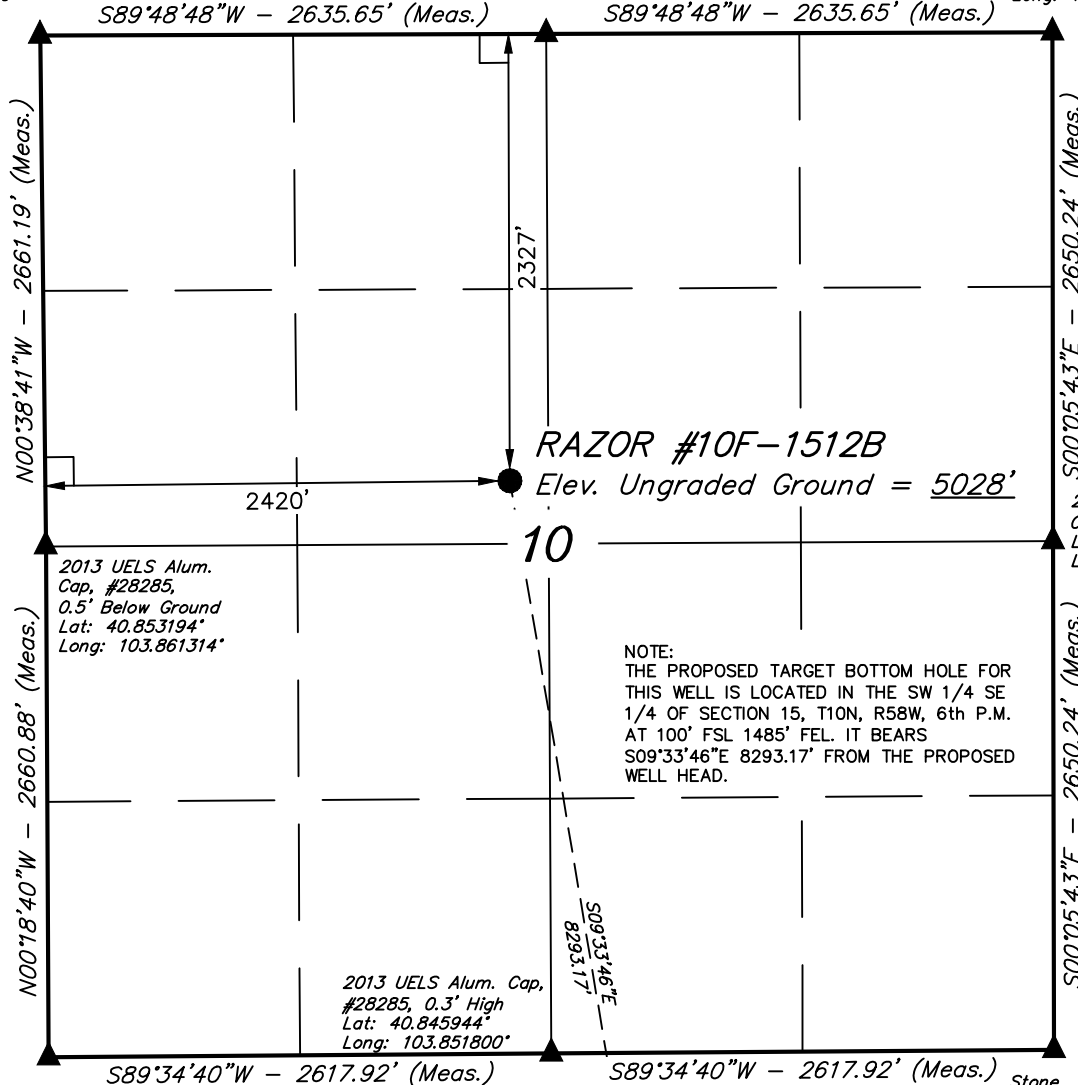
Well location, RAZOR #10F-1512B (SURFACE LOCATION), located as shown in the SE 1/4 NW 1/4 of Section 10, T10N, R58W, 6th P.M., Weld County, Colorado.

**BASIS OF ELEVATION**

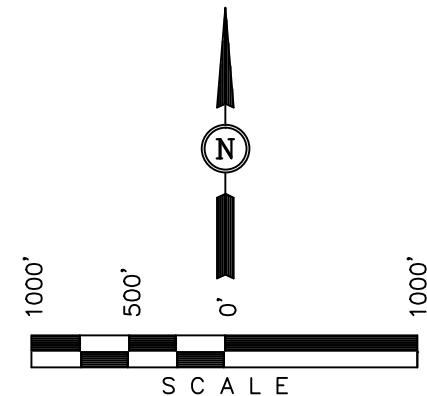
SPOT ELEVATION LOCATED AT THE NORTHEAST CORNER OF SECTION 15, T9N, R58W, 6th P.M. TAKEN FROM THE GATEHOOK SPRING, QUADRANGLE, COLORADO, WELD COUNTY, 7.5 MINUTE QUAD (TOPOGRAPHIC MAP) PUBLISHED BY THE UNITED STATES DEPARTMENT OF THE INTERIOR, GEOLOGICAL SURVEY. SAID ELEVATION IS MARKED AS BEING 4679 FEET.

**BASIS OF BEARINGS**

BASIS OF BEARINGS IS A G.P.S. OBSERVATION.



NOTE:  
THE PROPOSED TARGET BOTTOM HOLE FOR THIS WELL IS LOCATED IN THE SW 1/4 SE 1/4 OF SECTION 15, T10N, R58W, 6th P.M. AT 100' FSL 1485' FEL. IT BEARS S09°33'46"E 8293.17' FROM THE PROPOSED WELL HEAD.



**CERTIFICATE**

THIS IS TO CERTIFY THAT THE ABOVE PLAT WAS PREPARED FROM FIELD NOTES OF ACTUAL SURVEYS MADE BY ME OR UNDER MY SUPERVISION AND THAT THE SAME ARE TRUE AND CORRECT TO THE BEST OF MY KNOWLEDGE AND BELIEF.

REGISTERED LAND SURVEYOR  
REGISTRATION NO. 17492  
STATE OF COLORADO

REV: 07-08-13 B.D.H.  
REV: 05-31-13 B.D.H.

**UINTAH ENGINEERING & LAND SURVEYING**  
85 SOUTH 200 EAST - VERNAL, UTAH 84078  
(435) 789-1017

**LEGEND:**

- └─┘ = 90° SYMBOL
- = PROPOSED WELL HEAD.
- ▲ = SECTION CORNERS LOCATED.

PDOP = 1.6

NAD 83 (SURFACE LOCATION)	
LATITUDE	= 40°51'14.88" (40.854133)
LONGITUDE	= 103°51'09.30" (103.852583)
NAD 27 (SURFACE LOCATION)	
LATITUDE	= 40°51'14.93" (40.854147)
LONGITUDE	= 103°51'07.49" (103.852081)

SCALE 1" = 1000'	DATE SURVEYED: 05-08-13	DATE DRAWN: 05-13-13
PARTY D.N. G.W. J.S.	REFERENCES G.L.O. PLAT	
WEATHER WARM	FILE WHITING OIL & GAS CORP.	

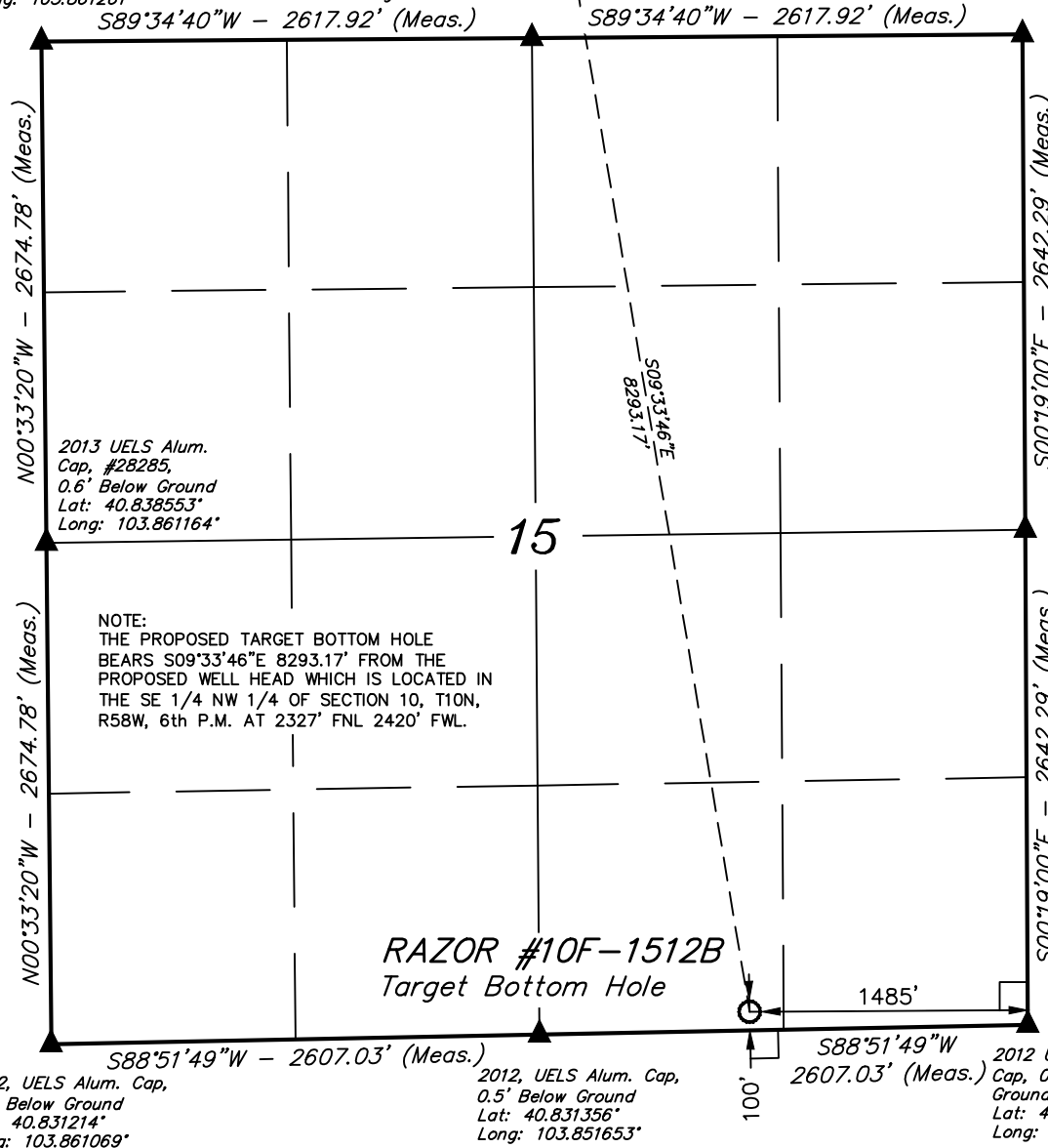
T10N, R58W, 6th P.M.

WHITING OIL & GAS CORP.

2013 UELS Alum.  
Cap. #28285,  
0.3' High  
Lat: 40.845892°  
Long: 103.861261°

2013 UELS Alum. Cap. Surface Location  
#28285, 0.3' High  
Lat: 40.845944°  
Long: 103.851800°

Stone  
Lat: 40.846000°  
Long: 103.842342°



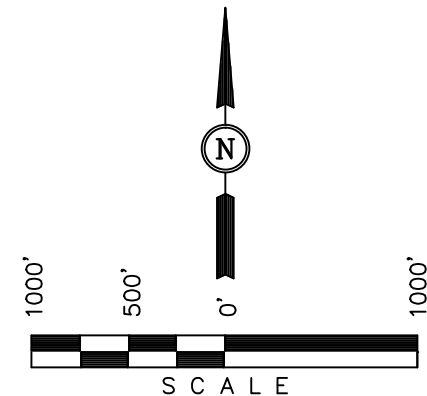
Well location, RAZOR #10F-1512B (TARGET BOTTOM HOLE), located as shown in the SW 1/4 SE 1/4 of Section 15, T10N, R58W, 6th P.M., Weld County, Colorado.

BASIS OF ELEVATION

SPOT ELEVATION LOCATED AT THE NORTHEAST CORNER OF SECTION 15, T9N, R58W, 6th P.M. TAKEN FROM THE GATEHOOK SPRING, QUADRANGLE, COLORADO, WELD COUNTY, 7.5 MINUTE QUAD (TOPOGRAPHIC MAP) PUBLISHED BY THE UNITED STATES DEPARTMENT OF THE INTERIOR, GEOLOGICAL SURVEY. SAID ELEVATION IS MARKED AS BEING 4679 FEET.

BASIS OF BEARINGS

BASIS OF BEARINGS IS A G.P.S. OBSERVATION.



CERTIFICATE

THIS IS TO CERTIFY THAT THE ABOVE PLAT WAS PREPARED FROM FIELD NOTES OF ACTUAL SURVEYS MADE BY ME OR UNDER MY SUPERVISION AND THAT THE SAME ARE TRUE AND CORRECT TO THE BEST OF MY KNOWLEDGE AND BELIEF.

REGISTERED LAND SURVEYOR  
REGISTRATION NO. 17492  
STATE OF COLORADO  
09-17-13

REV: 05-31-13 B.D.H.

UINTAH ENGINEERING & LAND SURVEYING  
85 SOUTH 200 EAST - VERNAL, UTAH 84078  
(435) 789-1017

LEGEND:

- └─┘ = 90° SYMBOL
- = PROPOSED WELL HEAD.
- ▲ = SECTION CORNERS LOCATED.

NAD 83 (TARGET BOTTOM HOLE)
LATITUDE = 40°49'54.09" (40.831692)
LONGITUDE = 103°50'51.36" (103.847600)
NAD 27 (TARGET BOTTOM HOLE)
LATITUDE = 40°49'54.14" (40.831706)
LONGITUDE = 103°50'49.56" (103.847100)

SCALE 1" = 1000'	DATE SURVEYED: 05-08-13	DATE DRAWN: 05-13-13
PARTY D.N. G.W. J.S.	REFERENCES G.L.O. PLAT	
WEATHER WARM	FILE WHITING OIL & GAS CORP.	