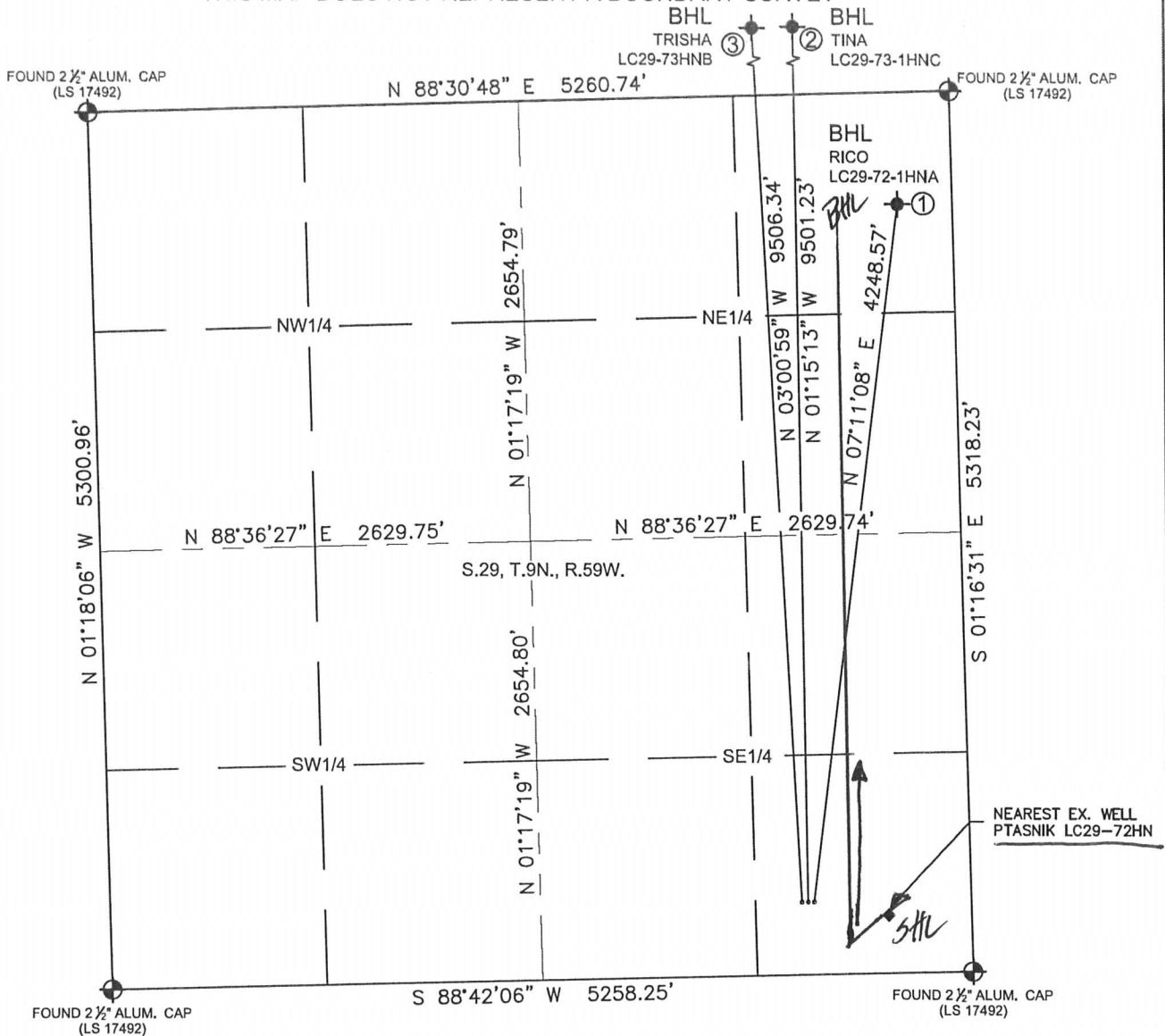


MULTI-WELL PLAN

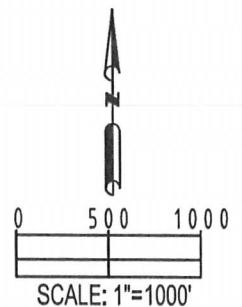
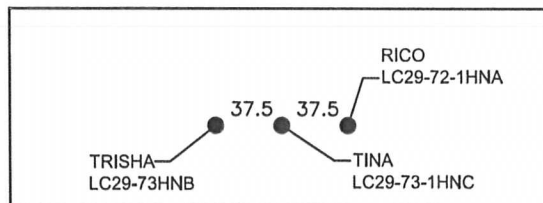
RICO LC29-72-1HNA PAD

THIS MAP DOES NOT REPRESENT A BOUNDARY SURVEY

SECTION: 29
TOWNSHIP: 9N
RANGE: 59W



WELL PAD DETAIL



SHEET 1 OF 3

FIELD DATE: 10-01-13

DRAWING DATE: 10-14-13

DRAWN BY: CLM

CHECKED BY: TJN

- | | | |
|---|--|---|
| ① | ② | ③ |
| BOTTOM HOLE:
RICO
LC29-72-1HNA
675' FNL, SEC. 29
330' FEL, SEC 29
LAT-40.72677°N
LONG-103.99367°W | BOTTOM HOLE:
TINA
LC29-73-1HNC
675' FNL
990' FEL
LAT-40.74131°N
LONG-103.99615°W | BOTTOM HOLE:
TRISHA
LC29-73HNB
675' FNL
1320' FEL
LAT-40.74130°N
LONG-103.99734°W |

LEGEND

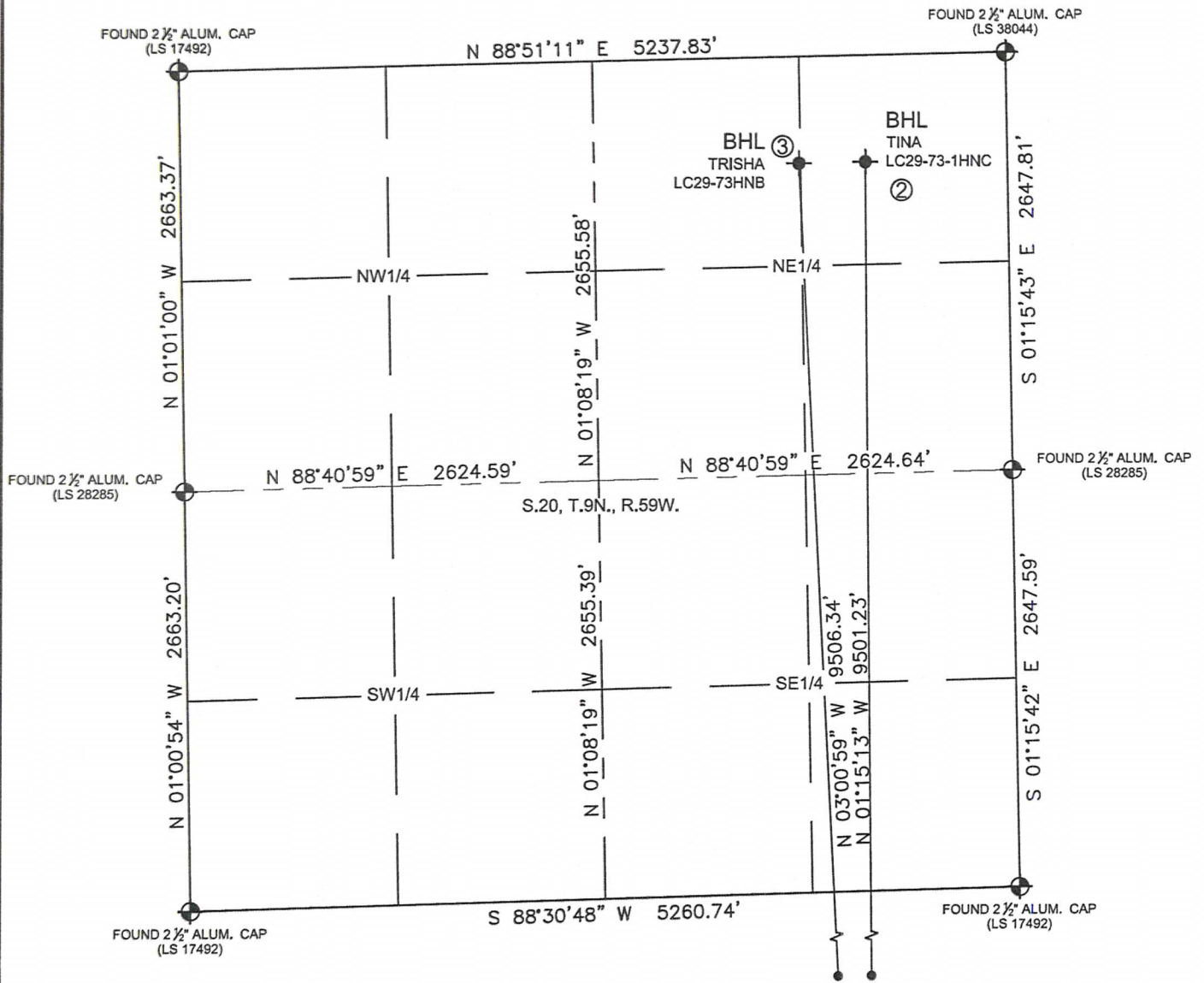
- ⊕ = FOUND MONUMENT
- = PROPOSED WELL
- ⬮ = BOTTOM HOLE
- ◆ = EXISTING WELL

MULTI-WELL PLAN

RICO LC29-72-1HNA PAD

THIS MAP DOES NOT REPRESENT A BOUNDARY SURVEY

SECTION: 29
TOWNSHIP: 9N
RANGE: 59W



SHEET 2 OF 3

FIELD
DATE:
10-01-13

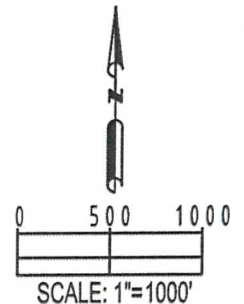
DRAWING
DATE:
10-14-13

DRAWN BY:
CLM

CHECKED BY:
TJN

LEGEND

- ⊕ = FOUND MONUMENT
- = PROPOSED WELL
- ◆ = BOTTOM HOLE
- ◆ = EXISTING WELL



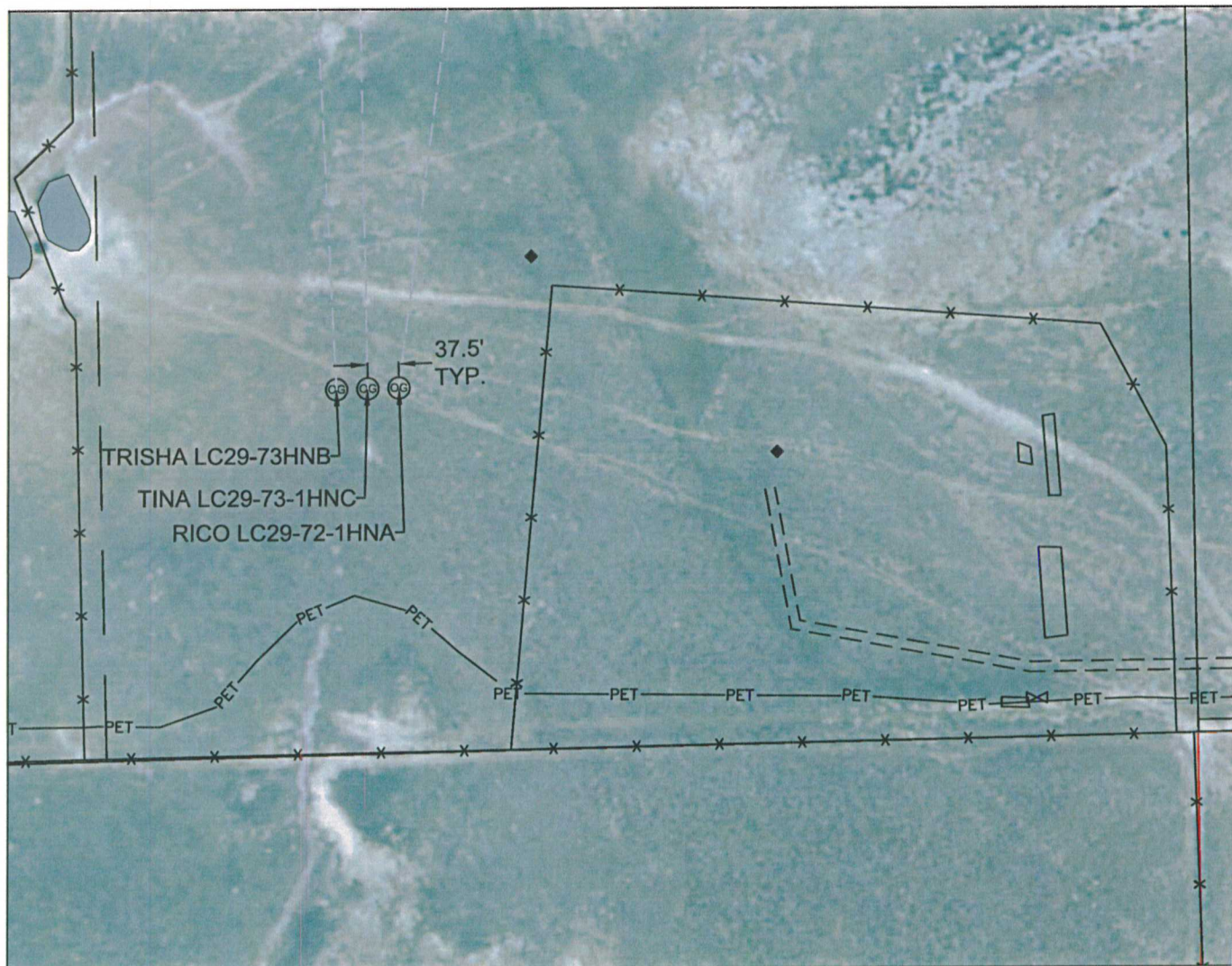
Petroleum Field Services, LLC

7535 HILLTOP CIRCLE

Denver, CO 80221

MULTI WELL PLAN
RICO LC29-72-1HNA PAD

SECTION: 29
TOWNSHIP: 9N
RANGE: 59W



SHEET 3 OF 3

FIELD
DATE:
10-01-13

DRAWING
DATE:
10-11-13

DRAWN BY:
CLM

CHECKED BY:
TJN

