

# T10N, R58W, 6th P.M.

## WHITING OIL & GAS CORP.

2012 UELS Alum.  
Cap 0.3' High  
Lat: 40.860344°  
Long: 103.842372°

Target Bottom Hole

N89°35'04"E - 2639.67' (Meas.)

2012 UELS Alum.  
Cap 0.3' High  
Lat: 40.860597°  
Long: 103.832833°

N89°35'04"E  
2639.67' (Meas.)

2012 UELS Alum. Cap.  
#28285, 0.3' High  
Lat: 40.860647°  
Long: 103.823292°

NOTE:  
THE PROPOSED TARGET BOTTOM HOLE FOR  
THIS WELL IS LOCATED IN THE NW 1/4 NE  
1/4 OF SECTION 2, T10N, R58W, 6th P.M.  
AT 600' FNL 2145' FEL IT BEARS  
N03°38'30"W 7048.28' FROM THE PROPOSED  
WELL HEAD.

RAZOR #11G-0210B  
Elev. Ungraded Ground = 4976'

2012 UELS Alum.  
Cap 0.3' High  
Lat: 40.853272°  
Long: 103.842356°

2012 UELS Alum. Cap.  
#28285, 0.3' High  
Lat: 40.853375°  
Long: 103.823214°

2012 UELS Alum.  
Cap 0.3' High  
Lat: 40.846053°  
Long: 103.832739°

2010 Alum. Cap.  
Flush With Ground  
T-Post, Large Stones  
Lat: 40.846106°  
Long: 103.823136°

Stone  
N89°34'55"E - 2657.22' (Meas.)  
Lat: 40.846000°  
Long: 103.842342°

N89°34'55"E - 2657.22' (Meas.)

N00°05'43"W - 2650.24' (Meas.)

N00°28'29"W - 2650.08' (Meas.)

N03°38'30"W  
7048.28'

2321'

1749'

### BASIS OF ELEVATION

SPOT ELEVATION LOCATED AT THE NORTHEAST CORNER OF SECTION 15, T9N, R58W, 6th P.M. TAKEN FROM THE GATEHOOK SPRING, QUADRANGLE, COLORADO, WELD COUNTY, 7.5 MINUTE QUAD (TOPOGRAPHIC MAP) PUBLISHED BY THE UNITED STATES DEPARTMENT OF THE INTERIOR, GEOLOGICAL SURVEY. SAID ELEVATION IS MARKED AS BEING 4679 FEET.

### BASIS OF BEARINGS

BASIS OF BEARINGS IS A G.P.S. OBSERVATION.



SCALE

CERTIFICATE

THIS IS TO CERTIFY THAT THE ABOVE SURVEY WAS PREPARED FROM FIELD NOTES OF ACTUAL SURVEY MADE BY ME OR UNDER MY SUPERVISION AND THAT THE SAME ARE TRUE AND CORRECT TO THE BEST OF MY KNOWLEDGE AND BELIEF.

REGISTERED LAND SURVEYOR  
REGISTRATION NO. 28285  
STATE OF COLORADO  
07-03-13

REVISED: 07-03-13 J.W.

### UNTAH ENGINEERING & LAND SURVEYING

85 SOUTH 200 EAST - VERNAL, UTAH 84078

(435) 789-1017

SCALE 1" = 1000'	DATE SURVEYED: 05-10-13	DATE DRAWN: 05-15-13
PARTY D.N. G.W. H.K.W.	REFERENCES G.L.O. PLAT	
WEATHER WARM	FILE	WHITING OIL & GAS CORP.

PDOP = 3.0

NAD 83 (SURFACE LOCATION)
LATITUDE = 40°51'15.28" (40.854244)
LONGITUDE = 103°49'46.36" (103.829544)
NAD 27 (SURFACE LOCATION)
LATITUDE = 40°51'15.33" (40.854258)
LONGITUDE = 103°49'44.55" (103.829042)

### LEGEND:

— = 90° SYMBOL

● = PROPOSED WELL HEAD.

▲ = SECTION CORNERS LOCATED.

# T10N, R58W, 6th P.M.

## WHITING OIL & GAS CORP.

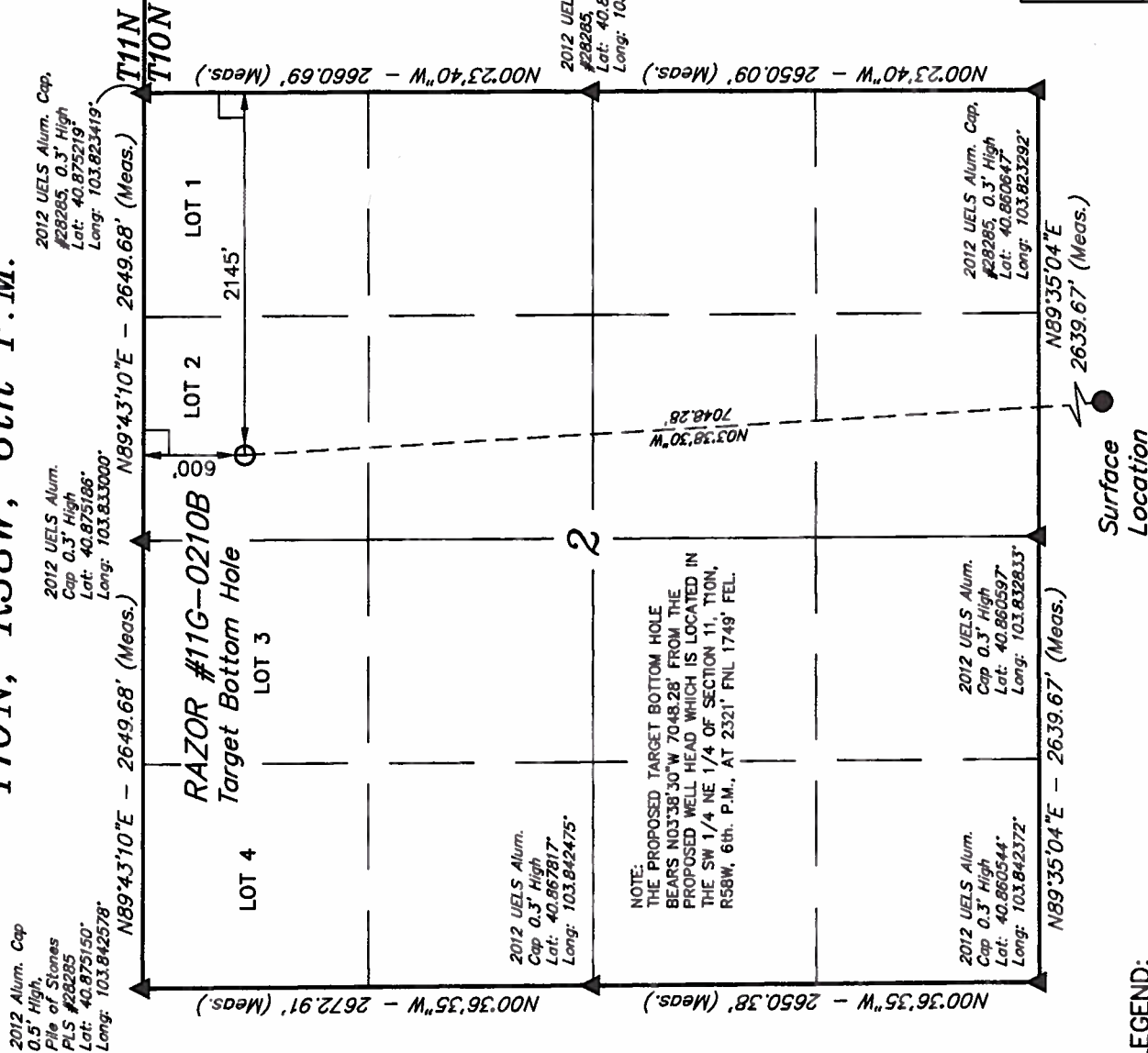
Well location, RAZOR #11G-0210B (TARGET BOTTOM HOLE), located as shown in LOT 2 of Section 2, T10N, R58W, 6th P.M., Weld County, Section 2, T10N, R58W, 6th P.M., Weld County, Colorado.

### BASIS OF ELEVATION

SPOT ELEVATION LOCATED AT THE NORTHEAST CORNER OF SECTION 15, T9N, R58W, 6th P.M. TAKEN FROM THE GATEHOOK SPRING, QUADRANGLE, COLORADO, WELD COUNTY, 7.5 MINUTE QUAD (TOPOGRAPHIC MAP) PUBLISHED BY THE UNITED STATES DEPARTMENT OF THE INTERIOR, GEOLOGICAL SURVEY. SAID ELEVATION IS MARKED AS BEING 4679 FEET.

### BASIS OF BEARINGS

BASIS OF BEARINGS IS A G.P.S. OBSERVATION.



### LEGEND:

- = 90° SYMBOL
- = PROPOSED WELL HEAD.
- ▲ = SECTION CORNERS LOCATED.

NAD 83 (TARGET BOTTOM HOLE)	
LATITUDE = 40°52'24.77" (40.873547)	
LONGITUDE = 103°49'52.18" (103.831161)	
NAD 27 (TARGET BOTTOM HOLE)	
LATITUDE = 40°52'24.82" (40.873561)	
LONGITUDE = 103°49'50.37" (103.830658)	

CERTIFICATE OF REGISTRATION  
 THIS IS TO CERTIFY THAT THE ABOVE PLAT WAS PREPARED FROM FIELD NOTES OF ACTUAL SURVEY MADE BY ME OR UNDER MY SUPERVISION AND THAT THE SAID ARE TRUE AND CORRECT TO THE BEST OF MY KNOWLEDGE AND BELIEF.  
 REGISTERED LAND SURVEYOR  
 REGISTRATION NO. 28285  
 STATE OF COLORADO  
 REVISED: 07-03-13 J.W.

UNTAH ENGINEERING & LAND SURVEYING  
 85 SOUTH 200 EAST - VERNAL, UTAH 84078  
 (435) 789-1017

SCALE	DATE SURVEYED:	DATE DRAWN:
1" = 1000'	05-10-13	05-15-13
PARTY	REFERENCES	
D.N. G.W. H.K.W.	G.L.O. PLAT	
WEATHER	FILE	
WARM	WHITING OIL & GAS CORP.	