

T10N, R58W, 6th P.M.

WHITING OIL & GAS CORP.

Well location, RAZOR #11G-0209A (SURFACE LOCATION), located as shown in the SW 1/4 NE 1/4 of Section 11, T10N, R58W, 6th P.M., Weld County, Colorado.

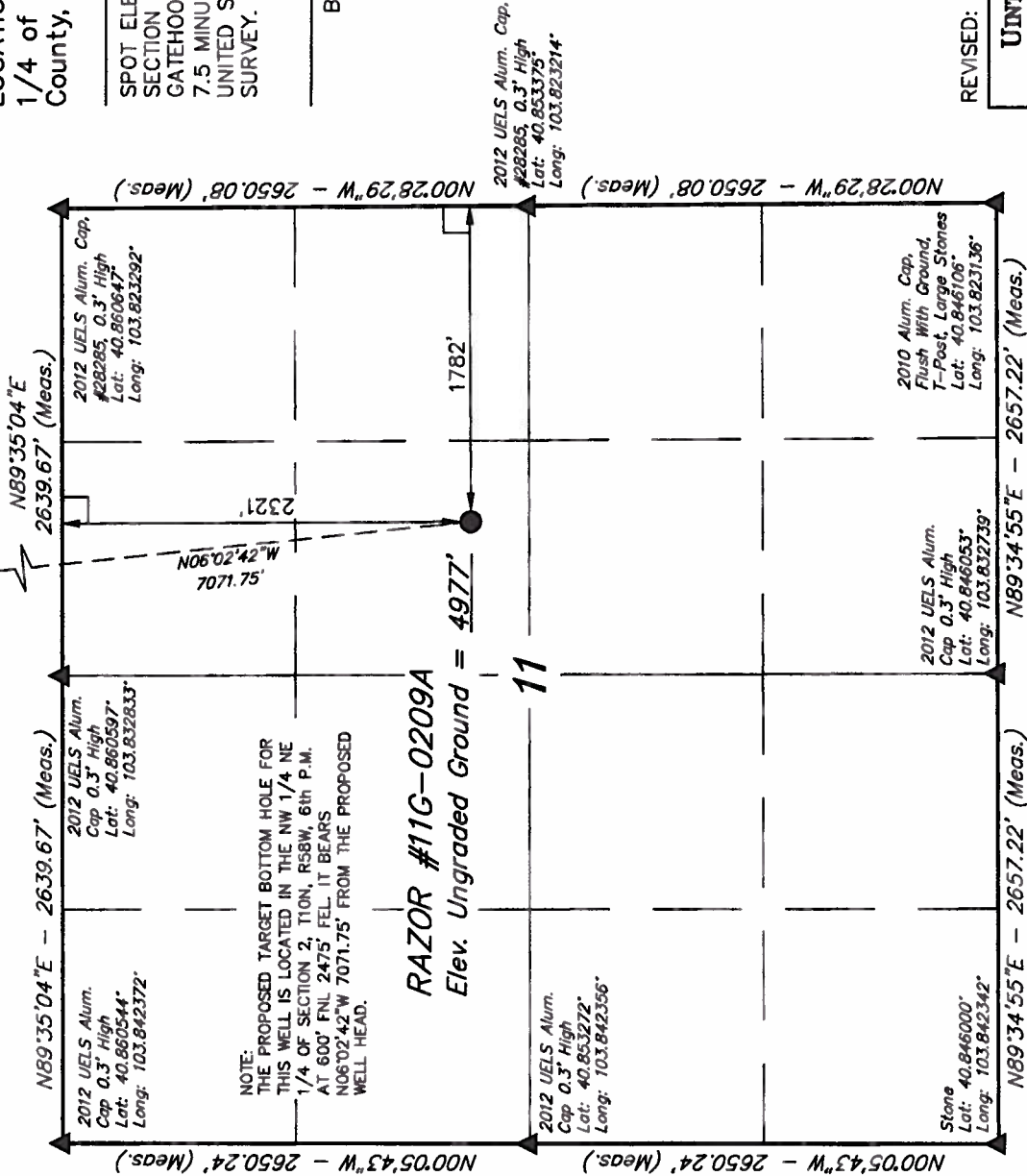
BASIS OF ELEVATION

SPOT ELEVATION LOCATED AT THE NORTHEAST CORNER OF SECTION 15, T9N, R58W, 6th P.M. TAKEN FROM THE GATEHOOK SPRING, QUADRANGLE, COLORADO, WELD COUNTY, 7.5 MINUTE QUAD (TOPOGRAPHIC MAP) PUBLISHED BY THE UNITED STATES DEPARTMENT OF THE INTERIOR, GEOLOGICAL SURVEY. SAID ELEVATION IS MARKED AS BEING 4679 FEET.

BASIS OF BEARINGS

BASIS OF BEARINGS IS A G.P.S. OBSERVATION.

Target Bottom Hole



CERTIFICATE

THIS IS TO CERTIFY THAT THE ABOVE COPY WAS PREPARED FROM FIELD NOTES OF ACTUAL SURVEY MADE BY ME OR UNDER MY SUPERVISION AND THAT THE SAME ARE TRUE AND CORRECT TO THE BEST OF MY KNOWLEDGE AND BELIEF.

REGISTERED LAND SURVEYOR
REGISTRATION NO. 28285
STATE OF COLORADO
007-03-13

REVISED: 07-03-13 J.W.

UTAH ENGINEERING & LAND SURVEYING
85 SOUTH 200 EAST - VERNAL, UTAH 84078
(435) 789-1017

SCALE 1" = 1000'	DATE SURVEYED: 05-10-13	DATE DRAWN: 05-15-13
PARTY D.N. G.W. H.K.W.	REFERENCES G.L.O. PLAT	
WEATHER WARM	FILE	WHITING OIL & GAS CORP.

PDOP = 2.2	NAD 83 (SURFACE LOCATION) LATITUDE = 40°51'15.28" (40.854244) LONGITUDE = 103°49'46.79" (103.829864)
	NAD 27 (SURFACE LOCATION) LATITUDE = 40°51'15.33" (40.854258) LONGITUDE = 103°49'44.98" (103.829161)

- LEGEND:
- = 90° SYMBOL
 - = PROPOSED WELL HEAD.
 - ▲ = SECTION CORNERS LOCATED.

T10N, R58W, 6th P.M.

WHITING OIL & GAS CORP.

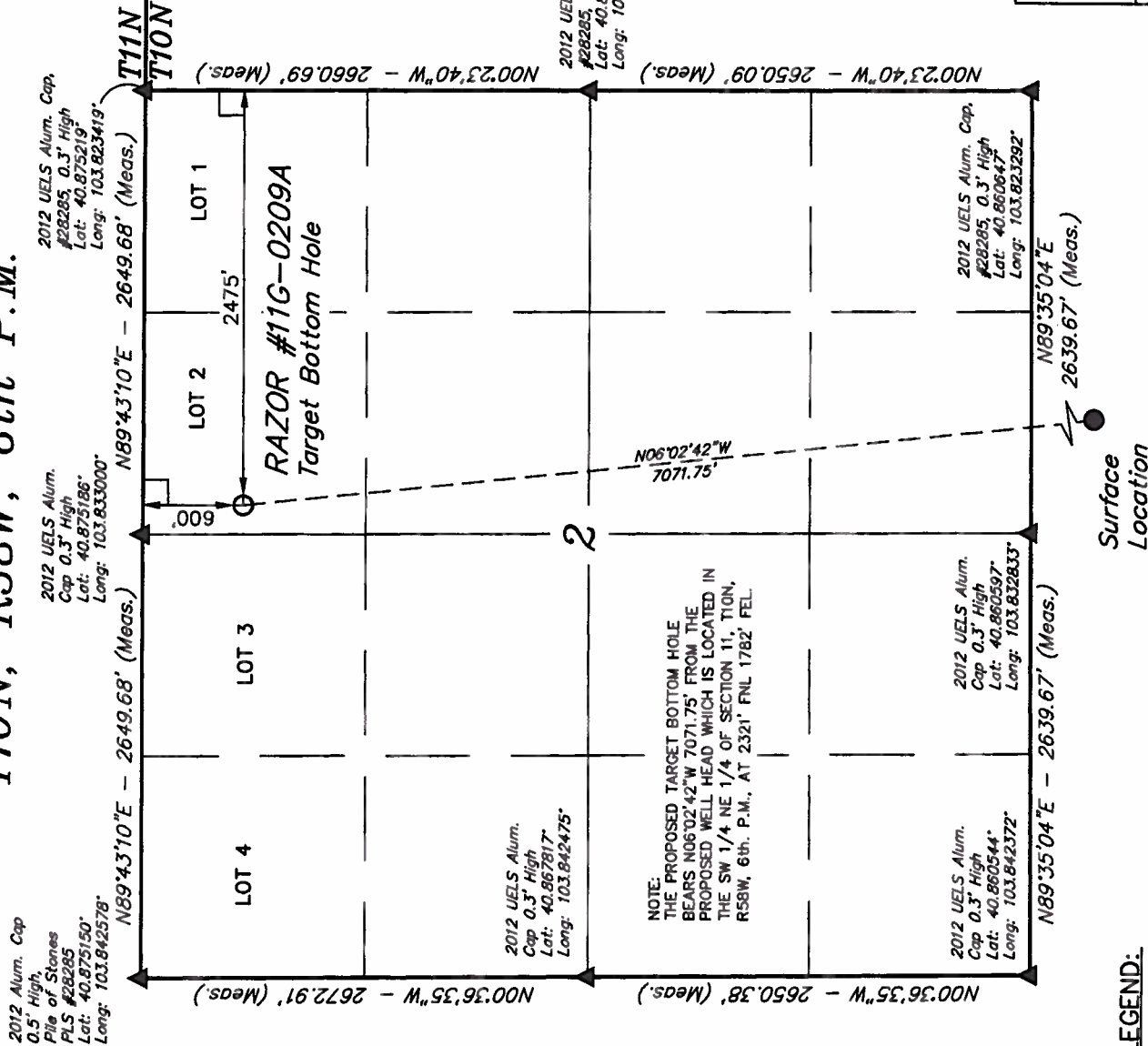
Well location, RAZOR #11G-0209A (TARGET BOTTOM HOLE), located as shown in LOT 2 of Section 2, T10N, R58W, 6th P.M., Weld County, T11N Colorado.

BASIS OF ELEVATION

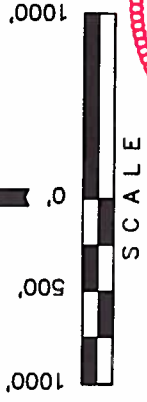
SPOT ELEVATION LOCATED AT THE NORTHEAST CORNER OF SECTION 15, T9N, R58W, 6th P.M. TAKEN FROM THE GATEHOOK SPRING, QUADRANGLE, COLORADO, WELD COUNTY, 7.5 MINUTE QUAD (TOPOGRAPHIC MAP) PUBLISHED BY THE UNITED STATES DEPARTMENT OF THE INTERIOR, GEOLOGICAL SURVEY. SAID ELEVATION IS MARKED AS BEING 4679 FEET.

BASIS OF BEARINGS

BASIS OF BEARINGS IS A G.P.S. OBSERVATION.



NOTE:
THE PROPOSED TARGET BOTTOM HOLE BEARS N06°02'42\" W 7071.75' FROM THE PROPOSED WELL HEAD WHICH IS LOCATED IN THE SW 1/4 NE 1/4 OF SECTION 11, T10N, R58W, 6th. P.M., AT 2321' FNL 1782' FEL.



CERTIFICATE
THIS IS TO CERTIFY THAT THE ABOVE PLAT WAS PREPARED FROM FIELD NOTES OF ACTUAL SURVEYS MADE BY ME OR UNDER MY SUPERVISION AND THAT THE SAID ARE TRUE AND CORRECT TO THE BEST OF MY KNOWLEDGE AND BELIEF.
REGISTERED LAND SURVEYOR
REGISTRATION NO. 28285
STATE OF COLORADO 07-03-13
REVISED: 07-03-13 J.W.

UNTAH ENGINEERING & LAND SURVEYING	
85 SOUTH 200 EAST - VERNAL, UTAH 84078	
(435) 789-1017	
SCALE 1" = 1000'	DATE SURVEYED: 05-10-13
PARTY D.N. G.W. H.K.W.	DATE DRAWN: 05-15-13
WEATHER WARM	REFERENCES G.L.O. PLAT
FILE WHITING OIL & GAS CORP.	

LEGEND:

- = 90° SYMBOL
- = PROPOSED WELL HEAD.
- ▲ = SECTION CORNERS LOCATED.

NAD 83 (TARGET BOTTOM HOLE)
LATITUDE = 40°52'24.75" (40.873542)
LONGITUDE = 103°49'56.47" (103.832353)
NAD 27 (TARGET BOTTOM HOLE)
LATITUDE = 40°52'24.80" (40.873556)
LONGITUDE = 103°49'54.66" (103.831850)