

WHITING OIL & GAS CORP.
RAZOR #11G-0209A, #11G-0210B, #11G-0211A, #11G-0212B,
#11G-1409A, #11G-1410B, #11G-1411A & #11G-1412B
LOCATED IN WELD COUNTY, COLORADO
SECTION 11, T10N, R58W, 6th P.M.



PHOTO: VIEW OF LOCATION STAKES

CAMERA ANGLE: NORTHERLY



PHOTO: VIEW OF LOCATION STAKES

CAMERA ANGLE: EASTERLY



- Since 1964 -

UELS Uintah Engineering & Land Surveying
85 South 200 East Vernal, Utah 84078
(435) 789-1017 * FAX (435) 789-1813

LOCATION PHOTOS

05 **17** **13**
MONTH DAY YEAR

TAKEN BY: D.N.

DRAWN BY: J.L.H.

REV: 07-05-13 B.D.H.

PHOTO
P1

WHITING OIL & GAS CORP.
RAZOR #11G-0209A, #11G-0210B, #11G-0211A, #11G-0212B,
#11G-1409A, #11G-1410B, #11G-1411A & #11G-1412B
LOCATED IN WELD COUNTY, COLORADO
SECTION 11, T10N, R58W, 6th P.M.

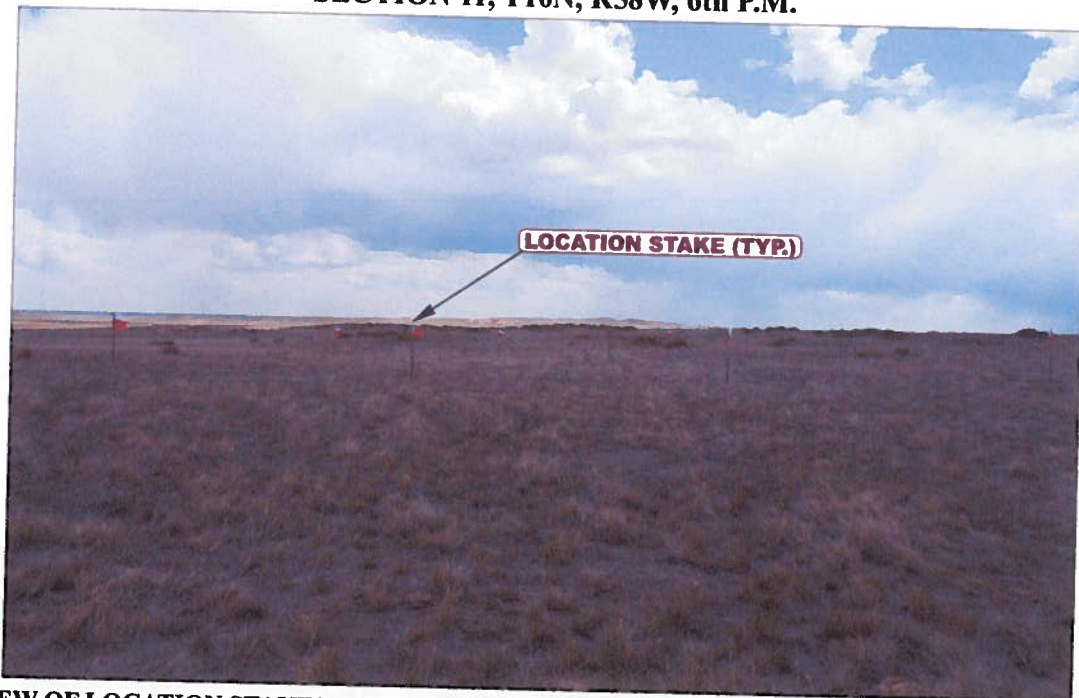


PHOTO: VIEW OF LOCATION STAKES

CAMERA ANGLE: SOUTHERLY

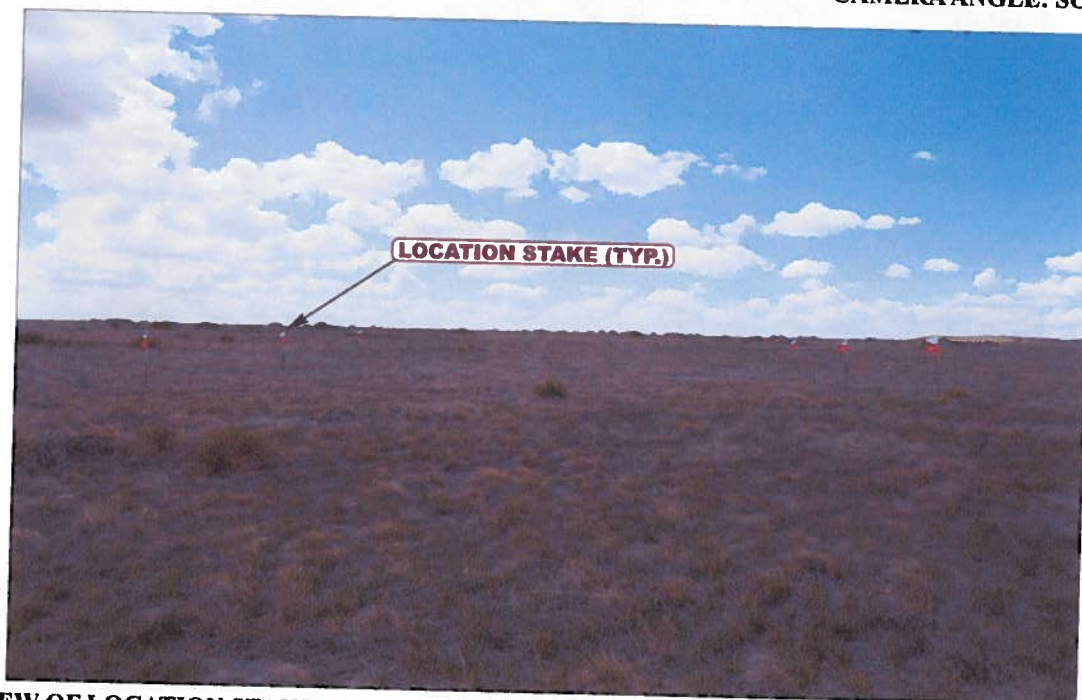


PHOTO: VIEW OF LOCATION STAKES

CAMERA ANGLE: WESTERLY



- Since 1964 -

U&LS Uintah Engineering & Land Surveying
85 South 200 East Vernal, Utah 84078
(435) 789-1017 * FAX (435) 789-1813

LOCATION PHOTOS

05 **17** **13**
MONTH DAY YEAR

PHOTO
P2

TAKEN BY: D.N. DRAWN BY: J.L.H. REV: 07-05-13 B.D.H.