

WELL NAME:  
OPERATOR:  
COMP ZONE:  
LOCATION:

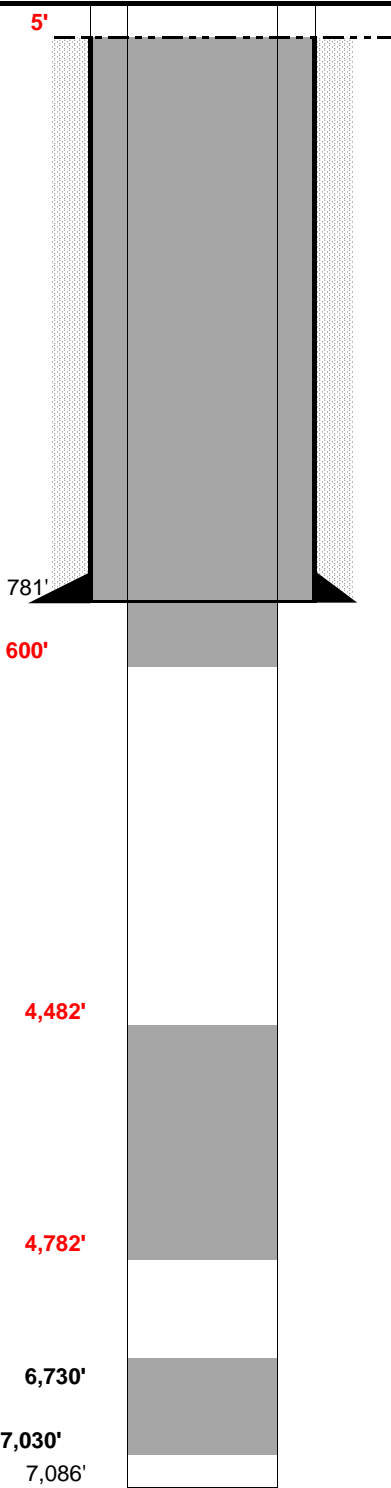
State #1  
The California Company  
D Sand, J Sand, Lakota  
9N 59W S36 NW NE

COUNTY:  
STATE:  
API :

Weld  
Colorado  
05-123-05006

SPUD:  
P&A:  
GL:

5/2/52  
6/5/52  
4,940'



**SURFACE CASING**  
DEPTH: 781' SIZE: 10.75" GRADE: J-55 WT (#/ft): 40.5  
CEMENT: 400 sx "common cement"  
COMMENTS: Estimated Class D or H Cmt.

**PRODUCTION CASING**  
DEPTH: SIZE: GRADE: WT (#/ft):  
CEMENT: TOC:  
COMMENTS: DST 6672-6713', then DST 6756-6769' w/ 5-1/2" packer  
  
PERFS: - PROD ZONE 1:  
PERFS: - ZONE 2:  
PERFS: - ZONE 3:

**PREVIOUS PLUGS**  
RECOVERED: SIZE:  
CMT 1: 6,730' - 7,030' COMMENT: 150 sk cement plug  
CMT 2: 700' - 900' COMMENT: 100 sk cement plug  
CMT 3: 0' - 29' COMMENT: 15 sx - surface w/ 4" pipe marker  
OTHER: Proposed Plug 1: 4,482' - 4,782' (300' above the top of the Niobrara)  
Proposed Plug 2: 5' - 600' (Surface and Potential FW zone)

**FORMATIONS:**  
FOX HILLS:  
NIOBRARA: 4782' Estimated  
CODELL:  
D SAND: 6,230'  
J SAND: 6,305'  
LAKOTA 6,585'