

**HALLIBURTON**

---

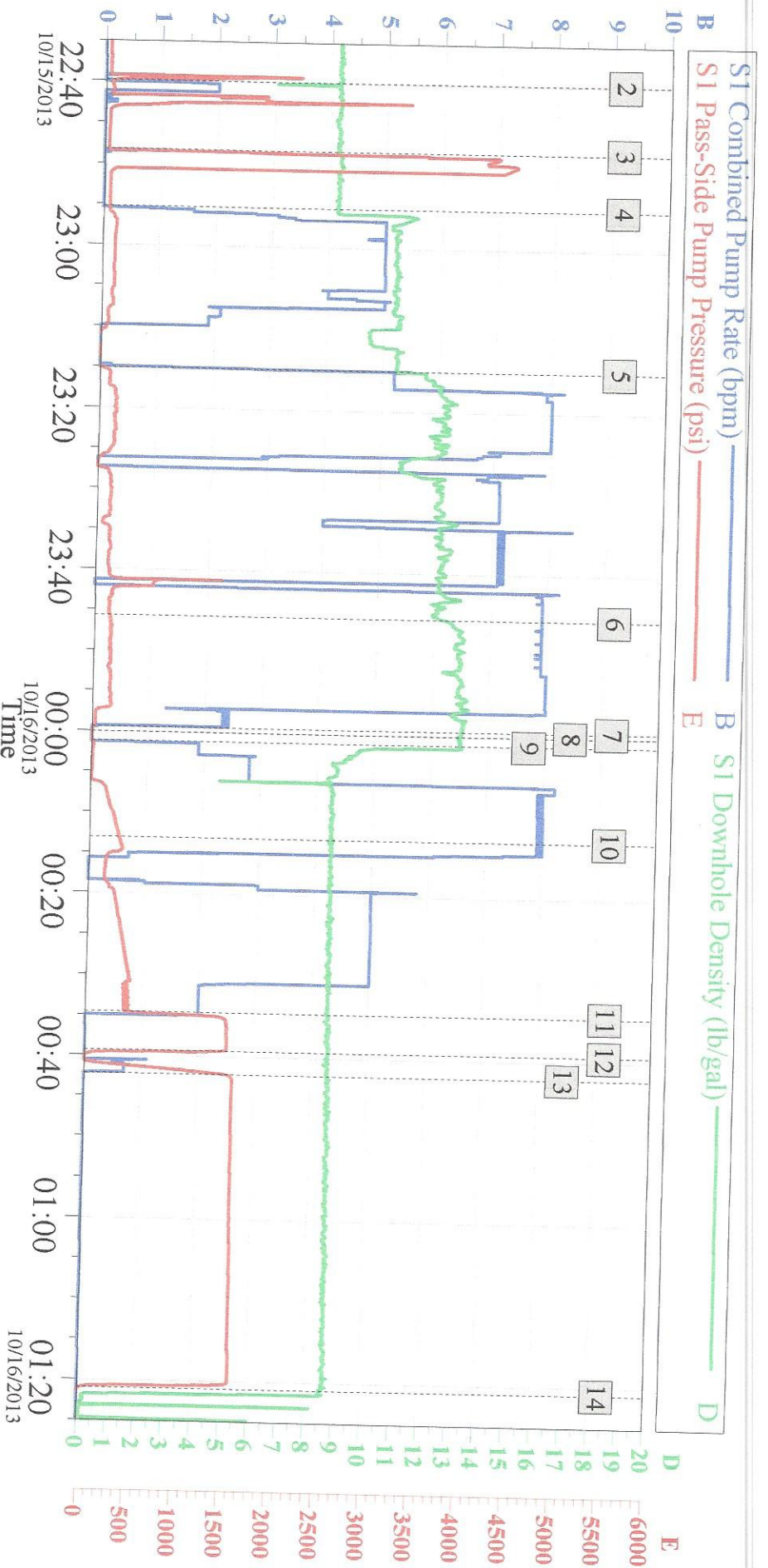
# **CONOCO/PHILLIPS COMPANY EBUSINESS**

---

**Cline 4-64 2-1H  
WILDCAT  
Arapahoe County , Colorado**

**Cement Surface Casing  
15-Oct-2013**

**Job Site Documents**



### Global Event Log

2	Fill Lines	10/15/2013 22:39:54	3	Test Lines	10/15/2013 22:48:15
4	Clean Spacer	10/15/2013 22:55:17	5	Pump Lead Cement	10/15/2013 23:15:06
6	Pump Tail Cement	10/15/2013 23:45:45	7	Shutdown	10/15/2013 23:59:27
8	Drop Top Plug	10/16/2013 00:00:01	9	Pump Displacement	10/16/2013 00:01:11
10	Cement to Surface	10/16/2013 00:13:04	11	Bump Plug	10/16/2013 00:34:34
12	Check Floats	10/16/2013 00:39:22	13	Pressure Test Casing	10/16/2013 00:42:13
14	End Test	10/16/2013 01:21:01			

Customer: Conoco Phillips  
 Well Description: Cline 4-64 2-1H

Job Date: 15-Oct-2013  
 Job Type: Surface

Sales Order #: 900820018  
 Supervisor: McBride



The Road to Excellence Starts with Safety

Sold To #: 352431	Ship To #: 3108240	Quote #:	Sales Order #: 900820018
Customer: CONOCO/PHILLIPS COMPANY EBUSINESS		Customer Rep: Tolman, Ben	
Well Name: Cline	Well #: 4-64 2-1H	API/UWI #: 05-005-07212	
Field: WILDCAT	City (SAP): WATKINS	County/Parish: Arapahoe	State: Colorado
Legal Description: Section 2 Township 4S Range 64W			
Lat: N 39.733 deg. OR N 39 deg. 43 min. 58.152 secs.		Long: W 104.509 deg. OR W -105 deg. 29 min. 28.68 secs.	
Job Purpose: Cement Surface Casing			
Well Type: Development Well		Job Type: Cement Surface Casing	
Sales Person: GROFF, THEODORE		Srv Supervisor: MCBRIDE, NATHAN MBU ID Emp #: 313810	

### Job Personnel

HES Emp Name	Exp Hrs	Emp #	HES Emp Name	Exp Hrs	Emp #	HES Emp Name	Exp Hrs	Emp #
MARKOVICH, STEVEN Michael	8.2	502964	MCBRIDE, NATHAN Charles	8.2	313810			

### Equipment

HES Unit #	Distance-1 way	HES Unit #	Distance-1 way	HES Unit #	Distance-1 way	HES Unit #	Distance-1 way
10025030	50 mile	11036295C	50 mile	11562562	50 mile	11645063	50 mile
12010170	50 mile						

### Job Hours

Date	On Location Hours	Operating Hours	Date	On Location Hours	Operating Hours	Date	On Location Hours	Operating Hours
TOTAL								

Total is the sum of each column separately

### Job

Formation Name	Formation Depth (MD)	Top	Bottom	Form Type	Job depth MD	Job Depth TVD	Water Depth	Perforation Depth (MD)	From	To	Called Out	Date	Time	Time Zone
				BHST	1890. ft	1890. ft						15 - Oct - 2013	14:00	MST
											On Location	15 - Oct - 2013	18:20	MST
											Job Started	15 - Oct - 2013	22:38	MST
											Job Completed	15 - Oct - 2013	01:21	MST
											Departed Loc	15 - Oct - 2013	02:30	MST

### Well Data

Description	New / Used	Max pressure psig	Size in	ID in	Weight lbm/ft	Thread	Grade	Top MD ft	Bottom MD ft	Top TVD ft	Bottom TVD ft
13-1/2" Open Hole				13.5				100.	1890.		
16" Casing	Unknown		16.	15.5					100.		
9-5/8" Casing	Mixed		9.625	8.921	36.	STC	J-55		1890.		

### Sales/Rental/3<sup>rd</sup> Party (HES)

Description	Qty	Qty uom	Depth	Supplier
CMT SURFACE CASING BOM	0	JOB		
SHOE,FLT,9-5/8 8RD,2-3/4 SUPER SEAL	1	EA		
CLR,FLT,9-5/8 8RD 29.3-40PPF,2-3/4	1	EA		
CENTRALIZER-9-5/8"-CSG-12 1/4"-HINGED	25	EA		
COLLAR-STOP-9 5/8"-FRICTION-HINGED	1	EA		
KIT,HALL WELD-A	1	EA		
MILEAGE FOR CEMENTING CREW,ZI	100	MI		

### Tools and Accessories

Type	Size	Qty	Make	Depth	Type	Size	Qty	Make	Depth	Type	Size	Qty	Make
Guide Shoe					Packer					Top Plug			
Float Shoe					Bridge Plug					Bottom Plug			
Float Collar					Retainer					SSR plug set			
Insert Float										Plug Container			
Stage Tool										Centralizers			





## The Road to Excellence Starts with Safety

The Road to Excellence Starts With Safety

Sold To #: 352431		Ship To #: 3108240		Quote #:		Sales Order #: 900820018	
Customer: CONOCO/PHILLIPS COMPANY EBUSINESS				Customer Rep: Tolman, Ben			
Well Name: Cline			Well #: 4-64 2-1H		API/UWI #: 05-005-07212		
Field: WILDCAT		City (SAP): WATKINS		County/Parish: Arapahoe		State: Colorado	
Legal Description: Section 2 Township 4S Range 64W							
Lat: N 39.733 deg. OR N 39 deg. 43 min. 58.152 secs.				Long: W 104.509 deg. OR W -105 deg. 29 min. 28.68 secs.			
Contractor:			Rig/Platform Name/Num: H&P 280				
Job Purpose: Cement Surface Casing					Ticket Amount:		
Well Type: Development Well			Job Type: Cement Surface Casing				
Sales Person: GROFF, THEODORE			Srvc Supervisor: MCBRIDE, NATHAN			MBU ID Emp #: 313810	

Activity Description	Date/Time	Cht #	Rate bbl/min	Volume bbl		Pressure psig		Comments
				Stage	Total	Tubing	Casing	
Arrive at Location from Service Center	10/15/2013 18:20							All equipment and materials on location
Assessment Of Location Safety Meeting	10/15/2013 18:45							Rig Running Casing
Pre-Rig Up Safety Meeting	10/15/2013 19:10							Hazard Hunt and review fluid location, wash up and truck layout
Rig-Up Equipment	10/15/2013 19:40							Review JSA
Casing on Bottom	10/15/2013 19:45							
Circulate Well	10/15/2013 19:50							
Rig-Up Completed	10/15/2013 20:30							
Pre-Job Safety Meeting	10/15/2013 21:00							Safety Meeting end at 2130. Unload head and pick up to rig floor. 2120. Wait on rig to finish circulating, rig down casing running tool, and blow down system.
Start Job	10/15/2013 22:38							
Pump Water	10/15/2013 22:39		2	2			120.0	Fill Lines
Test Lines	10/15/2013 22:48						4218.0	
Pump Spacer	10/15/2013 22:55		5	50			128.0	Clean Spacer III @ 10.5ppg 3.86yield, 24.21gal/sk
Drop Bottom Plug	10/15/2013 23:12							
Pump Lead Cement	10/15/2013 23:15		7	184.7			240.0	405sks @ 12.0ppg, 2.56yield, 15.09gal/sk

Sold To #: 352431

Ship To #: 3108240

Quote #:

Sales Order #: 900820018

## Cementing Job Log

Activity Description	Date/Time	Cht #	Rate bbl/ min	Volume bbl		Pressure psig		Comments
				Stage	Total	Tubing	Casing	
Pump Tail Cement	10/15/2013 23:45		7	69.8			190.0	195sks @ 13.0ppg, 2.01yield, 10.99gal/sk
Drop Top Plug	10/16/2013 00:00							
Pump Displacement	10/16/2013 00:01		5	142.9				Fresh Water
Spacer Returns to Surface	10/16/2013 00:05							8bbls into Displacement
Cement Returns to Surface	10/16/2013 00:13							58bbls Displaced 85bbls to Surface
Comment	10/16/2013 00:16							Shut down due to rig pump pinching off and not being able to move cement out of cellar.
Bump Plug	10/16/2013 00:34						600.0	500psi Over 1475 Final bump Pressure
Check Floats	10/16/2013 00:39							Floats Good
Pressure Test	10/16/2013 00:42							Test Casing 1500pis/ 30 Minutes 1560 Start Pressure 1600 End Pressure
End Job	10/16/2013 01:21							Thanks McBride and Crew

Sold To #: 352431

Ship To #: 3108240

Quote #:

Sales Order #: 900820018

HALLIBURTON

---

# CONOCO/PHILLIPS COMPANY EBUSINESS

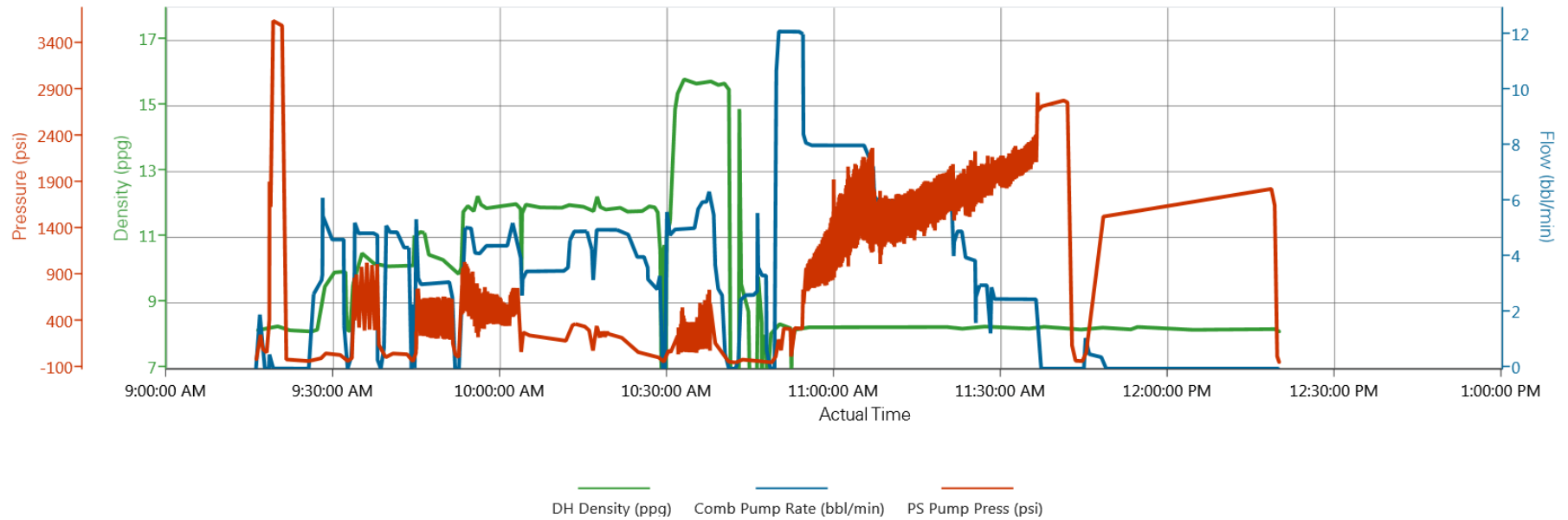
---

Cline 4-64 2-1H  
WILDCAT  
Arapahoe County , Colorado

Cement Intermediate Casing  
22-Oct-2013

Job Site Documents

## ConocoPhillips Cline 4-64 2-1H Intermediate





## Cementing Job Log

## The Road to Excellence Starts with Safety

Sold To #: 352431	Ship To #: 3108240	Quote #:	Sales Order #: 900834442
Customer: CONOCO/PHILLIPS COMPANY EBUSINESS		Customer Rep: Tolman, Ben	
Well Name: Cline	Well #: 4-64 2-1H	API/UWI #: 05-005-07212	
Field: WILDCAT	City (SAP): WATKINS	County/Parish: Arapahoe	State: Colorado
Legal Description: Section 2 Township 4S Range 64W			
Lat: N 39.733 deg. OR N 39 deg. 43 min. 58.152 secs.		Long: W 104.509 deg. OR W -105 deg. 29 min. 28.68 secs.	
Contractor:		Rig/Platform Name/Num: H&P 280	
Job Purpose: Cement Intermediate Casing		Ticket Amount:	
Well Type: Development Well		Job Type: Cement Intermediate Casing	
Sales Person: GROFF, THEODORE		Srvs Supervisor: SMITH, AARON	MBU ID Emp #: 518187

Activity Description	Date/Time	Cht #	Rate bbl/ min	Volume bbl		Pressure psig		Comments
				Stage	Total	Tubing	Casing	
Arrive at Location from Service Center	10/21/2013 12:30							
Assessment Of Location Safety Meeting	10/21/2013 13:00							
Casing on Bottom	10/21/2013 13:20							WITH ALL EQUIPMENT AND MATERIALS,
Circulate Well	10/21/2013 13:20							
Pre-Rig Up Safety Meeting	10/21/2013 13:20							RIG UP JSA WITH CREW AND SAFETY REP.
Rig-Up Equipment	10/21/2013 13:30							
Rig-Up Completed	10/21/2013 14:10							
Clean Lines	10/21/2013 14:19							WASH PUMPS AND LINES TO PIT
Pre-Job Safety Meeting	10/21/2013 15:00							WITH CUSTOMER REPS AND RIG CREW.
Start Job	10/21/2013 16:24							
Test Lines	10/21/2013 16:28						3500.0	PSI
Pump Spacer 1	10/21/2013 16:54		4	40	40			@10.5 PPG, 3.86 YIELD, 24.21 GAL/SK WITH 20 GAL MUSOL, 20 GAL SEM 7, 20 GAL DE-AIR.
Drop Bottom Plug	10/21/2013 17:09							PRE-LOADED WEATHERFORD BOTTOM PLUG IN PLUG CONTAINER VERIFIED BY CUSTOMER REP
Activity Description	Date/Time	Cht	Rate bbl/ min	Volume bbl		Pressure psig		Comments

Sold To #: 352431

Ship To #: 3108240

Quote # :

Sales Order #: 900834442

SUMMIT Version: 7.3.0106

Tuesday, October 22, 2013 02:24:00



## The Road to Excellence Starts with Safety

<b>Sold To #:</b> 352431	<b>Ship To #:</b> 3108240	<b>Quote #:</b>	<b>Sales Order #:</b> 900834442
<b>Customer:</b> CONOCO/PHILLIPS COMPANY EBUSINESS		<b>Customer Rep:</b> Tolman, Ben	
<b>Well Name:</b> Cline		<b>Well #:</b> 4-64 2-1H	<b>API/UWI #:</b> 05-005-07212
<b>Field:</b> WILDCAT	<b>City (SAP):</b> WATKINS	<b>County/Parish:</b> Arapahoe	<b>State:</b> Colorado
<b>Legal Description:</b> Section 2 Township 4S Range 64W			
<b>Lat:</b> N 39.733 deg. OR N 39 deg. 43 min. 58.152 secs.		<b>Long:</b> W 104.509 deg. OR W -105 deg. 29 min. 28.68 secs.	
<b>Job Purpose:</b> Cement Intermediate Casing			
<b>Well Type:</b> Development Well		<b>Job Type:</b> Cement Intermediate Casing	
<b>Sales Person:</b> GROFF, THEODORE		<b>Srvc Supervisor:</b> SMITH, AARON	<b>MBU ID Emp #:</b> 518187

## Job Personnel

HES Emp Name	Exp Hrs	Emp #	HES Emp Name	Exp Hrs	Emp #	HES Emp Name	Exp Hrs	Emp #
CHISLUM, DENNIS	26.0	512130	DA COSTA, CHARLES Angelo	26.0	551308	GRIFFITHS, ZACHARY Sakae	26.0	551430
JOHNSON, BRANDON Matthew	26.0	545534	SMITH, AARON David	26.0	518187	WILSON, RANDY Wayne	26.0	314399

## Equipment

HES Unit #	Distance-1 way	HES Unit #	Distance-1 way	HES Unit #	Distance-1 way	HES Unit #	Distance-1 way
10866493C	50 mile	11398319	50 mile	11488570C	50 mile	11518546	50 mile
11645065	50 mile	11764739	50 mile	12010173	50 mile	53301	50 mile

## Job Hours

Date	On Location Hours	Operating Hours	Date	On Location Hours	Operating Hours	Date	On Location Hours	Operating Hours
<b>TOTAL</b>								

Total is the sum of each column separately

## Job

Formation Name	Formation Depth (MD)	Top	Bottom	Form Type	Job depth MD	Job Depth TVD	Water Depth	Perforation Depth (MD)	From	To
				BHST	7703. ft	7703. ft				
							Wk Ht Above Floor			
						6. ft				

## Job Times

	Date	Time	Time Zone
Called Out	21 - Oct - 2013	08:00	MST
On Location	21 - Oct - 2013	12:30	MST
Job Started	21 - Oct - 2013	16:24	MST
Job Completed	22 - Oct - 2013	12:32	MST
Departed Loc	21 - Oct - 2013	14:30	MST

## Well Data

Description	New / Used	Max pressure psig	Size in	ID in	Weight lbm/ft	Thread	Grade	Top MD ft	Bottom MD ft	Top TVD ft	Bottom TVD ft
8-3/4" Open Hole				8.75							
7" Casing	Unknown		7.	6.094	32.	BTC	P-110	1890.	7684.		
9-5/8" Casing	Mixed		9.625	8.921	36.	STC	J-55		1890.		

Sales/Rental/3<sup>rd</sup> Party (HES)

Description	Qty	Qty uom	Depth	Supplier
CMT CASING EQUIPMENT BOM	0	JOB		
SHOE,FLT,7 8RD,2-3/4 SS II VLV	1	EA		
CLR,FLT,7 LG 8RD 23-26PPF,2-3/4	1	EA		
CENTRALISER SLIDER II,#0700-0834S	80	EA		
CLAMP - LIMIT - 7 - HINGED -	1	EA		
KIT,HALL WELD-A	1	EA		
MILEAGE FOR CEMENTING CREW,ZI	100	MI		
ZI FUEL SURCHG-CARS/PICKUPS<1 1/2TON	100	MI		

## Tools and Accessories

Type	Size	Qty	Make	Depth	Type	Size	Qty	Make	Depth	Type	Size	Qty	Make
Guide Shoe					Packer					Top Plug			
Float Shoe					Bridge Plug					Bottom Plug			



## Cementing Job Log

		#		Stage	Total	Tubing	Casing	
Pump Lead Cement	10/21/2013 17:10		5	155	195			440 SKS EXTENDACEM B2, @ 12 PPG, 1.99 YIELD, 10.64 GAL/SK
Pump Tail Cement	10/21/2013 17:53		4	36	231			135 SKS, HALCEM @ 15.8 PPG, 1.52 YIELD, 6.19 GAL/SK, DIDNT PUMP WRONG CEMENT WAS SENT FOR TAIL CEMENT AND LAST POD OF LEAD CEMENT
Shutdown	10/21/2013 17:54							HAD WRONG CEMENT SENT TO TRUCK FOR LAST POD OF LEAD, DID NOT CATCH IT, REALIZED WHEN WEIGHING UP WHAT WAS SUPPOSED TO BE TAIL CEMENT, SHUT JOB DOWN
Clean Hole	10/21/2013 18:10							HAD TO ROLL THE HOLE
Pre-Job Safety Meeting	10/22/2013 08:30							WITH CUSTOMER REP AND RIG CREW
Start Job	10/22/2013 09:38							
Test Lines	10/22/2013 09:42						3500. 0	FRESH WATER WITH NO ADDITIVES
Pump Spacer 1	10/22/2013 09:54		4	40	40		500.0	@10.5 PPG, 3.86 YIELD, 24.21 GAL/SK WITH 20 GAL MUSOL, 20 GAL SEM 7, 20 GAL DE-AIR.
Drop Bottom Plug	10/22/2013 10:24							PRE-LOADED WEATHERFORD BOTTOM PLUG IN PLUG CONTAINER VERIFIED BY CUSTOMER REP
Pump Lead Cement	10/22/2013 10:25		5	155	195		350.0	440 SKS EXTENDACEM B2, @ 12 PPG, 1.99 YIELD, 10.64 GAL/SK
Pump Tail Cement	10/22/2013 10:56		4	36	231		125.0	135 SKS, HALCEM @ 15.8 PPG, 1.52 YIELD, 6.19 GAL/SK,
Shutdown	10/22/2013 11:00							
Clean Lines	10/22/2013 11:03							

Sold To #: 352431

Ship To #: 3108240

Quote #:

Sales Order #: 900834442

SUMMIT Version: 7.3.0106

Tuesday, October 22, 2013 02:24:00



## Cementing Job Summary

Float Collar					Retainer					SSR plug set			
Insert Float										Plug Container			
Stage Tool										Centralizers			

## Miscellaneous Materials

Gelling Agt		Conc		Surfactant		Conc		Acid Type		Qty		Conc	%
Treatment Fld		Conc		Inhibitor		Conc		Sand Type		Size		Qty	

## Fluid Data

## Stage/Plug #: 1

Fluid #	Stage Type	Fluid Name	Qty	Qty uom	Mixing Density lbm/gal	Yield ft <sup>3</sup> /sk	Mix Fluid Gal/sk	Rate bbl/min	Total Mix Fluid Gal/sk
1	Clean Spacer III		80.00	bbl	10.5	.0	.0	.0	
	0.5 gal/bbl	SEM-7, 55 GAL DRUM (100001626)							
	0.5 gal/bbl	MUSOL(R) A, BULK (100003696)							
2	EXTENDACEM B1	EXTENDACEM (TM) SYSTEM (452981)	880.0	sacks	12.	1.99	10.64		10.64
	10.64 Gal	FRESH WATER							
3	HalCem	HALCEM (TM) SYSTEM (452986)	270.0	sacks	15.8	1.52	6.19		6.19
	6.19 Gal	FRESH WATER							

## Calculated Values

## Pressures

## Volumes

Displacement	274	Shut In: Instant	2730	Lost Returns	0	Cement Slurry	191	Pad	
Top Of Cement	0	5 Min	2800	Cement Returns	21	Actual Displacement	274	Treatment	
Frac Gradient		15 Min		Spacers	40	Load and Breakdown		Total Job	505

## Rates

Circulating		Mixing		Displacement		Avg. Job	
Cement Left In Pipe	Amount 80 ft	Reason	Shoe Joint				
Frac Ring # 1 @	ID	Frac ring # 2 @	ID	Frac Ring # 3 @	ID	Frac Ring # 4 @	ID

The Information Stated Herein Is Correct

Customer Representative Signature

*Cementing Job Log*

Activity Description	Date/Time	Cht #	Rate bbl/ min	Volume bbl		Pressure psig		Comments
				Stage	Total	Tubing	Casing	
Drop Top Plug	10/22/2013 11:10							PRE-LOADED WEATHERFORD TOP PLUG IN PLUG CONTAINER, VERIFIED BY CUSTOMER REP
Pump Displacement	10/22/2013 11:12		8	274	505		2000. 0	FRESH WATER
Spacer Returns to Surface	10/22/2013 11:35							@ 213 BBLS DISPLACEMENT, 40 BBLS TO THE PIT
Cement Returns to Surface	10/22/2013 11:45							
Bump Plug	10/22/2013 11:52		2.5	274	505		2730. 0	@ 500 OVER FINAL CIRCULATING PRESSURE 1273,
Check Floats	10/22/2013 11:57							FLOATS HELD, 3 BBLS BACK
Other	10/22/2013 11:59						1800. 0	CASING TEST @ 1500 PSI FOR 30 MIN
End Job	10/22/2013 12:32							RIG DOWN JSA, JOURNEY MANANGMENT MEETING, THANKS AARON SMITH AND CREW

---

**CONOCO/PHILLIPS COMPANY EBUSINESS**

---

**Cline 4-64 2-1H  
WILDCAT  
Arapahoe County , Colorado**

**Cement Production Liner**  
**29-Oct-2013**

**Job Site Documents**



## The Road to Excellence Starts with Safety

Sold To #: 352431	Ship To #: 3108240	Quote #:	Sales Order #: 900855165
Customer: CONOCO/PHILLIPS COMPANY EBUSINESS		Customer Rep: Evans, Wes	
Well Name: Cline	Well #: 4-64 2-1H	API/UWI #: 05-005-07212	
Field: WILDCAT	City (SAP): WATKINS	County/Parish: Arapahoe	State: Colorado
Legal Description: Section 2 Township 4S Range 64W			
Lat: N 39.733 deg. OR N 39 deg. 43 min. 58.152 secs.		Long: W 104.509 deg. OR W -105 deg. 29 min. 28.68 secs.	
Contractor: H&P		Rig/Platform Name/Num: H&P 280	
Job Purpose: Cement Production Liner			
Well Type: Development Well		Job Type: Cement Production Liner	
Sales Person: GROFF, THEODORE	Srvc Supervisor: OTERI, VAUGHN	MBU ID Emp #: 443828	

## Job Personnel

HES Emp Name	Exp Hrs	Emp #	HES Emp Name	Exp Hrs	Emp #	HES Emp Name	Exp Hrs	Emp #
DEY, JERRY A	10.0	505015	HARRAH, THADDEUS Gregory	10.0	552592	OTERI, VAUGHN Steeves	10.0	443828
WHIPPLE, WESLEY Morgan	10.0	518611						

## Equipment

HES Unit #	Distance-1 way	HES Unit #	Distance-1 way	HES Unit #	Distance-1 way	HES Unit #	Distance-1 way
10679720C	45 mile	10829457	45 mile	11036295	45 mile	11338223	45 mile
11410470C	45 mile						

## Job Hours

Date	On Location Hours	Operating Hours	Date	On Location Hours	Operating Hours	Date	On Location Hours	Operating Hours

TOTAL Total is the sum of each column separately

Job				Job Times			
Formation Name	Top	Bottom		Date	Time	Time Zone	
Formation Depth (MD)				Called Out	29 - Oct - 2013	03:00	MST
Form Type		BHST		On Location	29 - Oct - 2013	06:45	MST
Job depth MD	11660. ft	Job Depth TVD	7500. ft	Job Started	29 - Oct - 2013	13:13	MST
Water Depth		Wk Ht Above Floor	30. ft	Job Completed	29 - Oct - 2013	15:18	MST
Perforation Depth (MD)	From	To		Departed Loc			

## Well Data

Description	New / Used	Max pressure psig	Size in	ID in	Weight lbm/ft	Thread	Grade	Top MD ft	Bottom MD ft	Top TVD ft	Bottom TVD ft
6" Open Hole				6.25				7684.	11660.		
4-1/2" Liner	New		4.5	3.92	13.5		P-110	6682.	11660.		
7" Casing	Unknown		7.	6.094	32.	BTC	P-110	.	7684.		
4" Drill Pipe	Unknown		4.	3.34	14.			.	6682.		

Sales/Rental/3<sup>rd</sup> Party (HES)

Description	Qty	Qty uom	Depth	Supplier
CENTRALIZER SLIDER II 4 1/2" x 6"	185	EA		
SOLID STOP COLLAR 4-1/2", #0412-00SO	370	EA		
MILEAGE FOR CEMENTING CREW,ZI	50	MI		

## Tools and Accessories

Type	Size	Qty	Make	Depth	Type	Size	Qty	Make	Depth	Type	Size	Qty	Make
Guide Shoe					Packer					Top Plug			
Float Shoe					Bridge Plug					Bottom Plug			
Float Collar					Retainer					SSR plug set			
Insert Float										Plug Container			
Stage Tool										Centralizers			

Miscellaneous Materials										
Gelling Agt	Conc		Surfactant		Conc		Acid Type		Qty	Conc %
Treatment Fld	Conc		Inhibitor		Conc		Sand Type		Size	Qty
Fluid Data										
Stage/Plug #: 1										
Fluid #	Stage Type	Fluid Name	Qty	Qty uom	Mixing Density lbm/gal	Yield ft <sup>3</sup> /sk	Mix Fluid Gal/sk	Rate bbl/min	Total Mix Fluid Gal/sk	
1	Clean Spacer III		30.00	bbl	10.5	.0	.0	.0		
2	EXPANDACEM B2	EXPANDACEM (TM) SYSTEM (452979)	295.0	sacks	13.8	1.69	7.77		7.77	
	0.5 %	HR-5, 50 LB SK (100005050)								
	7.774 Gal	FRESH WATER								
3	Clean Spacer III		12.00	bbl	10.5	.0	.0	.0		
	145.4583 lbm/bbl	SAND-SSA-1 - SILICA FLOUR - 200 MESH, BULK (100003691)								
4	Displacement with MMCR		66.00	bbl	8.34	.0	.0	.0		
	0.1 gal/bbl	MICRO MATRIX CEMENT RETARDER, 5 GAL PAIL (100003781)								
5	Displacement		52.00	bbl	.	.0	.0	.0		
Calculated Values		Pressures		Volumes						
Displacement		Shut In: Instant		Lost Returns	0	Cement Slurry		Pad		
Top Of Cement		5 Min		Cement Returns	20	Actual Displacement	130	Treatment		
Frac Gradient		15 Min		Spacers	42	Load and Breakdown		Total Job		
Rates										
Circulating		Mixing		Displacement		Avg. Job				
Cement Left In Pipe	Amount	90 ft	Reason	Shoe Joint						
Frac Ring # 1 @	ID	Frac ring # 2 @	ID	Frac Ring # 3 @	ID	Frac Ring # 4 @	ID			
The Information Stated Herein Is Correct				Customer Representative Signature						



*The Road to Excellence Starts with Safety*

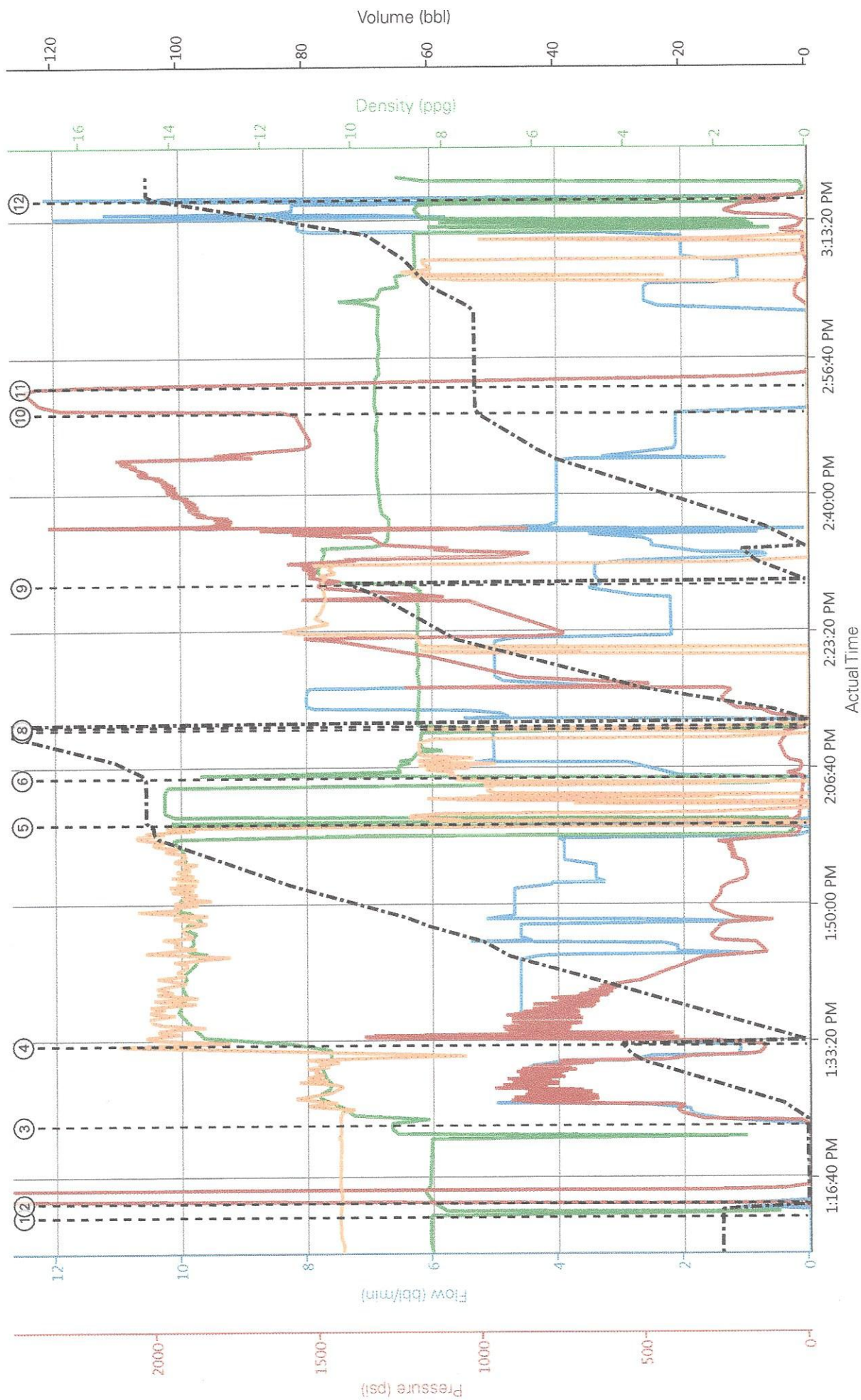
Sold To #: 352431	Ship To #: 3108240	Quote #:	Sales Order #: 900855165
Customer: CONOCO/PHILLIPS COMPANY EBUSINESS		Customer Rep: Evans, Wes	
Well Name: Cline	Well #: 4-64 2-1H	API/UWI #: 05-005-07212	
Field: WILDCAT	City (SAP): WATKINS	County/Parish: Arapahoe	State: Colorado
Legal Description: Section 2 Township 4S Range 64W			
Lat: N 39.733 deg. OR N 39 deg. 43 min. 58.152 secs.		Long: W 104.509 deg. OR W -105 deg. 29 min. 28.68 secs.	
Contractor: H&P		Rig/Platform Name/Num: H&P 280	
Job Purpose: Cement Production Liner			Ticket Amount:
Well Type: Development Well		Job Type: Cement Production Liner	
Sales Person: GROFF, THEODORE	Srv Supervisor: OTERI, VAUGHN	MBU ID Emp #: 443828	

Activity Description	Date/Time	Cht #	Rate bbl/min	Volume bbl		Pressure psig		Comments
				Stage	Total	Tubing	Casing	
Call Out	10/29/2013 03:00							CALL FROM ARS OFFICE
Arrive At Loc	10/29/2013 06:45							ARRIVE ON LOCATION MET WITH COMPANY REP (WES & CLINT) DISCUSSED JOB PROCESS AND COCERNS
Rig-Up Equipment	10/29/2013 07:00							STARTED RIGGING UP ALL IRON AND HOSES
Safety Meeting	10/29/2013 12:00							HELD SAFETY MEETING IN DOG HOUSE WITH ALL HANDS ON LOCATION TO DISSCUSS JOB PROCESS AND ANY HAZARDS
Start Job	10/29/2013 13:13							
Test Lines	10/29/2013 13:15						4293.0	PRESSURE TESTED PUMPS AND LINES FOUND NO LEAKS AND PRESSURE HELD GOOD
Pump Spacer 1	10/29/2013 13:25		4.5	30			830.0	MIXED 10.5PPG CLEAN SPACER WITH FRESH WATER
Pump Cement	10/29/2013 13:34		5	88			250.0	MIXED 13.8PPG EXPANDACEM WITH FRESH WATER
Shutdown	10/29/2013 14:01							
Clean Lines	10/29/2013 14:07							WASHED PUMPS AND LINES TILL FRESH WATER CAME OUT AT PIT



Activity Description	Date/Time	Cht #	Rate bbl/ min	Volume bbl		Pressure psig		Comments
				Stage	Total	Tubing	Casing	
Drop Top Plug	10/29/2013 14:10							RIG HAND RELEASED DART WITNESSED BY COMPANY REP AND BAKER HANDS
Pump Displacement	10/29/2013 14:13		4	130			1900. 0	PUMPED 66.55 BBLS OF MMCR WATER THEN MIXED 12 BBLS OF 10.5PPG CLEAN SPACER THEN PUMPED 51.94BBLS OF WATER BASED DRILLING MUD
Bump Plug	10/29/2013 14:52						1520. 0	BUMPED PLUG 500PSI OVER FINAL PUMP PRESSURE
Check Floats	10/29/2013 14:55			1.5			2345. 0	RELEASED PRESSURE BACK TO PUMP TRUCK FLOATS HELD GOOD
Reverse Circ Well	10/29/2013 15:18							LINED OUT ALL VAVLES SO THAT RIG COULD REVERSE OUT
End Job	10/29/2013 15:19							

# ConocoPhillips Cline 4-64 2-1H Production Liner



	Comb Pump Rate (bbl/min)	DH Density (ppg)	PS Pump Press (psi)	Recirc Density (ppg)	Pump Stg Tot (bbl)
① Start Job	0.8,35.6;10.37;13.9				
④ Pump Cement	2.3;12.27;270;13.41;30.4	⑦ Drop Top Plug 0.8,67.2;0.129.3			⑩ Bump Plug n/a;n/a;n/a;n/a;n/a
② Test Lines	0.8,42.32;12;10.42;0.4	⑤ Shutdown 0.1,1.11;52.6;93.105.6	⑧ Pump Displacement 0.8,66;1;0.0	⑪ Other 0.9,48;1321;0.53	
③ Pump Spacer 1	0.9,2.7;10.33;0	⑥ Clean Lines 2.2;10.46;80;7.87;106.1	⑨ Pump Spacer 1 3.3;10.69;1433;10.75;0	⑫ End Job n/a;n/a;n/a;n/a;n/a	



## Water Analysis For Cement Mixing Water

Company: CONOCO/PHILLIP S COMPANY  
EBUSINESS  
Rig Name/Nbr: H&P 280  
County: Arapahoe  
Lease: Cline  
State: Colorado  
Well Name, Nbr: Cline, 4-64 2-1H  
API No. /UWI: 05-005-07212  
Country: United States of America

### FIELD TEST KIT

**NOTE:** These tests are an indication of POTENTIAL contamination and are not conclusive.  
For more comprehensive results, a sample should be submitted to the Local Area Lab

Date: 29-Oct-2013  
Service Supervisor: OTERI, VAUGHN  
Ticket Number: 900855165  
Water Source:

Temperature: \_\_\_\_\_ [ $<80\text{ F}$ ]  
pH: \_\_\_\_\_ [between 6-8 pH]  
Specific Gravity: \_\_\_\_\_ [1.000 - 1.005 see Chart]  
Chart in Kit shows comparisons of: Chlorides \_\_\_\_\_ [ $<3,000\text{ ppm @ }1.004\text{ S.G.}$ ]  
Calcium \_\_\_\_\_ [ $<500\text{ ppm @ }1.004\text{ S.G.}$ ]

PASS	FAIL		
<input type="checkbox"/>	<input type="checkbox"/>	<b><u>Nessler's Nitrogen</u></b>	[Passing Parameters]
		Color of Yellow	_____ [ $<4.5\text{ ppm (mg/L)}$ ]
		<b><u>Tannin-Lignin</u></b>	
<input type="checkbox"/>	<input type="checkbox"/>	Color of Blue	_____ [ $<25.0\text{ ppm}$ ]
		<b><u>Sulfate</u></b>	
		Degree of Clarity	_____ [ $200\text{ ppm}$ ]
<input type="checkbox"/>	<input type="checkbox"/>	Black X Visible	_____ [if NO $>200\text{ ppm} = \text{FAIL}$ ]
		<b><u>Iron (Fe)</u></b>	
<input type="checkbox"/>	<input type="checkbox"/>	Degree of Orange	_____ [ $<20.0\text{ ppm}$ ]



**Material Roll Up**Crew: CEMENT  
Requested Job Start Date: \_\_\_\_\_Sales Order #:  
AFE #:  
WO #:  
PO #:

## Colorado Oil and Gas Commission Wellsite Form

Customer: CONOCO PHILLIPS

UWI / API Number

Well Name: CLINE

Well No: : 4-64-2-1H

Stage / Zone:

Formation:

Field: Wattenburg

County/Parish: ARAPAHOE

State: COLORADO

Latitude:

Longitude:

Sect / Twn / Rng: / /

Job Type: CEMENT LINER

Service Supervisor: VAUGHN OTERI

Cust Rep

Name:

Cust Rep

Phone #: (

**Do Not leave the yard without the proper MSDS documentation for All chemicals.**

Colorado Oil and Gas Commission					
Material	Delivered to Location	UOM	Specific Gravity	Weight (lbs)	Comment
CLEAN SPACER		BBL		42	
EXPANDACEM		LB		32098	
		LB			
		LB			
		Gal			
		LB			

☒Operator provided all Material Safety Data Sheets (MSDS) related to material listed above.  
Operator representative will check box to designate he/she has received all MSDS documentation.\_\_\_\_\_  
Operator Representative Signature