

T10N, R58W, 6th P.M.

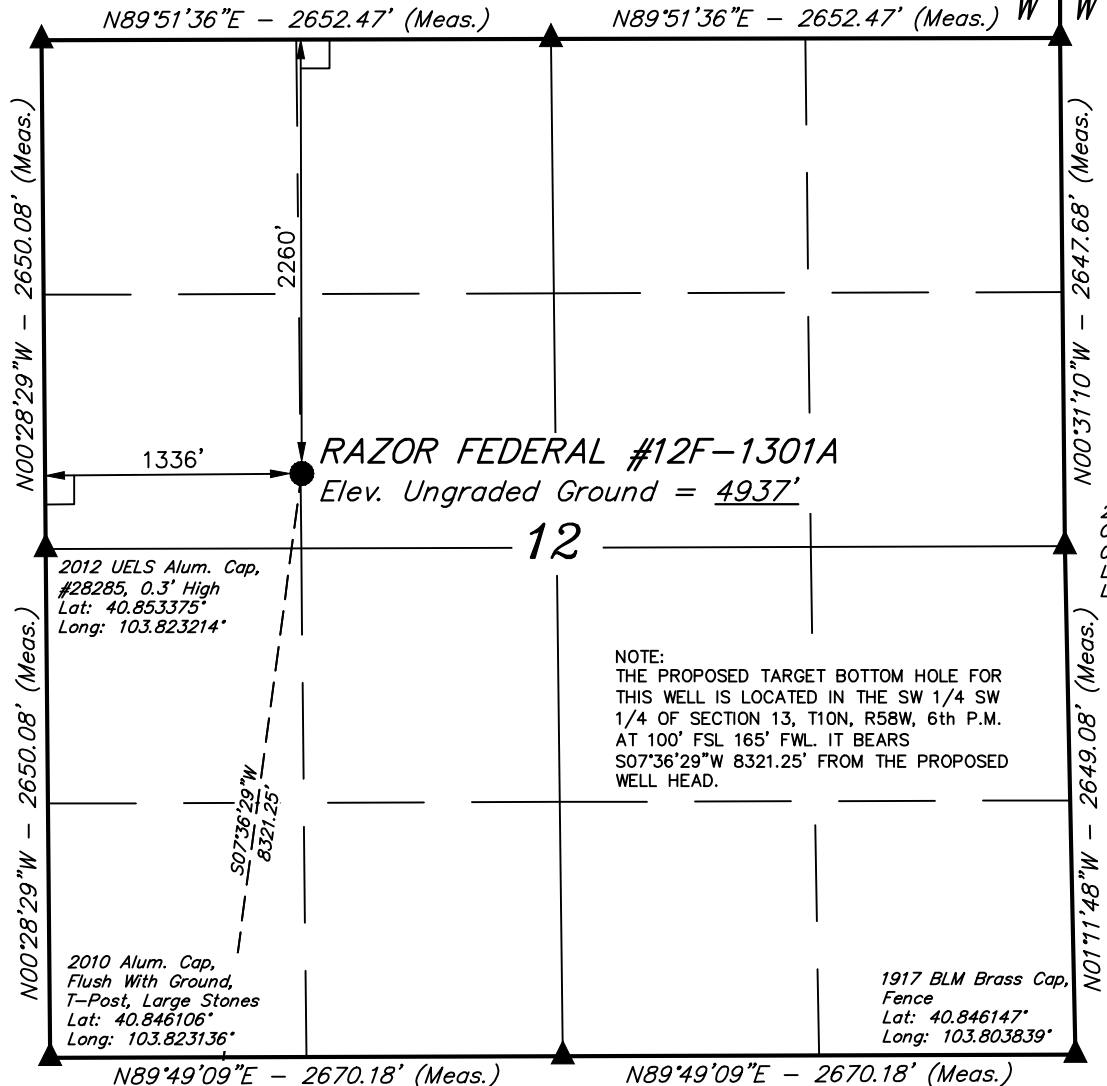
2012 UELS Alum. Cap,
#28285, 0.3' High
Lat: 40.860647°
Long: 103.823292°

2012 UELS Alum. Cap,
#28285, 0.3' High
Lat: 40.860664°
Long: 103.813706°

2006 Private Alum.
Cap, #24949,
0.6' Below Ground
Lat: 40.860678°
Long: 103.804117°

R
58
W

R
57
W



NOTE:
THE PROPOSED TARGET BOTTOM HOLE FOR
THIS WELL IS LOCATED IN THE SW 1/4 SW
1/4 OF SECTION 13, T10N, R58W, 6th P.M.
AT 100' FSL 165' FWL. IT BEARS
S07°36'29"W 8321.25' FROM THE PROPOSED
WELL HEAD.

LEGEND:

- └ = 90° SYMBOL
- = PROPOSED WELL HEAD.
- ▲ = SECTION CORNERS LOCATED.

Target Bottom Hole

2012 UELS Alum. Cap,
#28285, 0.3' High
Lat: 40.846125°
Long: 103.813489°

PDOP = 3.9

NAD 83 (SURFACE LOCATION)
LATITUDE = 40°51'16.04" (40.854456)
LONGITUDE = 103°49'06.23" (103.818397)
NAD 27 (SURFACE LOCATION)
LATITUDE = 40°51'16.09" (40.854469)
LONGITUDE = 103°49'04.43" (103.817897)

WHITING OIL & GAS CORP.

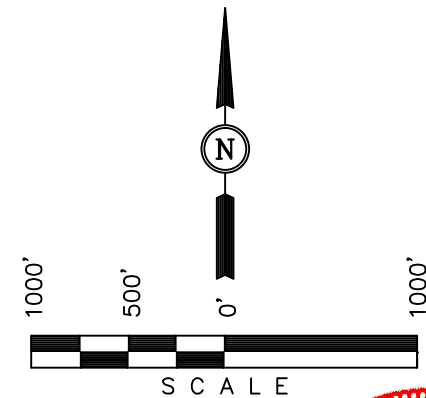
Well location, RAZOR FEDERAL #12F-1301A
(SURFACE LOCATION), located as shown in the SE
1/4 NW 1/4 of Section 12, T10N, R58W, 6th P.M.,
Weld County, Colorado.

BASIS OF ELEVATION

SPOT ELEVATION LOCATED AT THE NORTHEAST CORNER OF
SECTION 15, T9N, R58W, 6th P.M. TAKEN FROM THE
GATEHOOK SPRING, QUADRANGLE, COLORADO, WELD COUNTY,
7.5 MINUTE QUAD (TOPOGRAPHIC MAP) PUBLISHED BY THE
UNITED STATES DEPARTMENT OF THE INTERIOR, GEOLOGICAL
SURVEY. SAID ELEVATION IS MARKED AS BEING 4679 FEET.

BASIS OF BEARINGS

BASIS OF BEARINGS IS A G.P.S. OBSERVATION.



CERTIFICATION

THIS IS TO CERTIFY THAT THE ABOVE PLAT WAS PREPARED FROM
FIELD NOTES OF ACTUAL SURVEYS MADE BY ME OR UNDER MY
SUPERVISION AND THAT THE SAME ARE TRUE AND CORRECT TO THE
BEST OF MY KNOWLEDGE AND BELIEF.

REGISTERED LAND SURVEYOR
REGISTRATION NO. 28285
STATE OF COLORADO 05-16-13

REV: 07-02-13 B.D.H.
REV: 06-25-13 H.K.W.
REV: 06-03-13 B.D.H.

UINTAH ENGINEERING & LAND SURVEYING
85 SOUTH 200 EAST - VERNAL, UTAH 84078
(435) 789-1017

SCALE 1" = 1000'	DATE SURVEYED: 05-14-13	DATE DRAWN: 05-20-13
PARTY J.H. K.H. A.D.	REFERENCES G.L.O. PLAT	
WEATHER WARM	FILE WHITING OIL & GAS CORP.	

T10N, R58W, 6th P.M.

WHITING OIL & GAS CORP.

2010 Alum. Cap,
Flush With Ground,
T-Post, Large Stones
Lat: 40.846106°
Long: 103.823136°

● Surface Location

2012 UELS Alum. Cap,
#28285, 0.3' High
Lat: 40.846125°
Long: 103.813489°

R
58
W

R
57
W

Well location, RAZOR FEDERAL #12F-1301A
(TARGET BOTTOM HOLE), located as shown in the
SW 1/4 SW 1/4 of Section 13, T10N, R58W, 6th
P.M., Weld County, Colorado.

BASIS OF ELEVATION

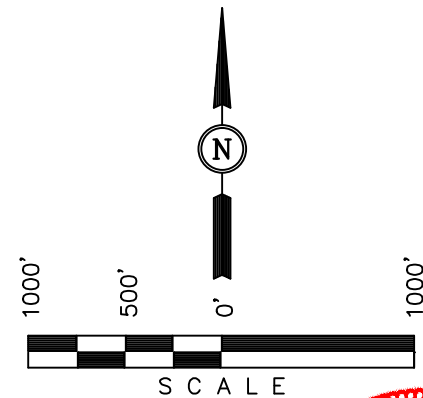
SPOT ELEVATION LOCATED AT THE NORTHEAST CORNER OF
SECTION 15, T9N, R58W, 6th P.M. TAKEN FROM THE
GATEHOOK SPRING, QUADRANGLE, COLORADO, WELD COUNTY,
7.5 MINUTE QUAD (TOPOGRAPHIC MAP) PUBLISHED BY THE
UNITED STATES DEPARTMENT OF THE INTERIOR, GEOLOGICAL
SURVEY. SAID ELEVATION IS MARKED AS BEING 4679 FEET.

BASIS OF BEARINGS

BASIS OF BEARINGS IS A G.P.S. OBSERVATION.

NOTE:
THE PROPOSED TARGET BOTTOM HOLE
BEARS S07°36'29"W 8321.25' FROM THE
PROPOSED WELL HEAD WHICH IS LOCATED IN
THE SE 1/4 NW 1/4 OF SECTION 12, T10N,
R58W, 6th P.M., AT 2260' FNL 1336' FWL.

2012 UELS Alum. Cap,
#28285, 0.1' High
Lat: 40.838878°
Long: 103.803747°



CERTIFICATION

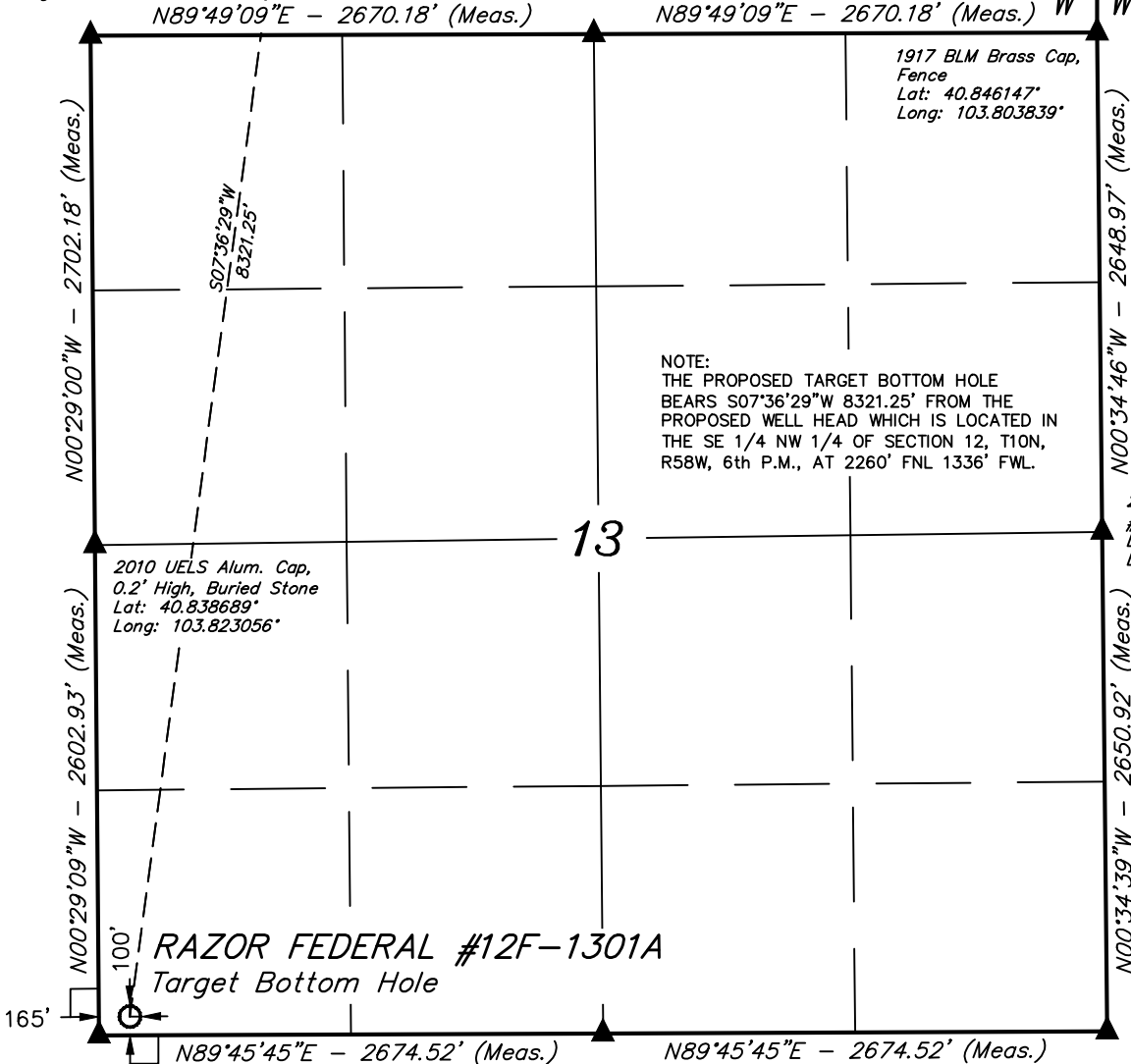
THIS IS TO CERTIFY THAT THE ABOVE PLAT WAS PREPARED FROM
FIELD NOTES OF ACTUAL SURVEYS MADE BY ME OR UNDER MY
SUPERVISION AND THAT THE SAME ARE TRUE AND CORRECT TO THE
BEST OF MY KNOWLEDGE AND BELIEF.

REGISTERED LAND SURVEYOR
REGISTRATION NO. 28285
STATE OF COLORADO 05-16-13

REV: 07-02-13 B.D.H.
REV: 06-25-13 H.K.W.
REV: 06-03-13 B.D.H.

UINTAH ENGINEERING & LAND SURVEYING
85 SOUTH 200 EAST - VERNAL, UTAH 84078
(435) 789-1017

SCALE 1" = 1000'	DATE SURVEYED: 05-14-13	DATE DRAWN: 05-20-13
PARTY J.H. K.H. A.D.	REFERENCES G.L.O. PLAT	
WEATHER WARM	FILE WHITING OIL & GAS CORP.	



LEGEND:

- └ = 90° SYMBOL
- = PROPOSED WELL HEAD.
- ▲ = SECTION CORNERS LOCATED.

NAD 83 (TARGET BOTTOM HOLE)
LATITUDE = 40°49'54.56" (40.831822)
LONGITUDE = 103°49'20.59" (103.822386)
NAD 27 (TARGET BOTTOM HOLE)
LATITUDE = 40°49'54.61" (40.831836)
LONGITUDE = 103°49'18.78" (103.821883)