

---

**WPX ENERGY ROCKY MOUNTAIN LLC-EBUS**

---

**PA 411-27  
PARACHUTE  
Garfield County , Colorado**

**Cement Surface Casing  
19-Jul-2013**

**Post Job Report**

*The Road to Excellence Starts with Safety*

Sold To #: 300721	Ship To #: 3010182	Quote #:	Sales Order #: 900592881
Customer: WPX ENERGY ROCKY MOUNTAIN LLC-EBUS		Customer Rep: Towers, Ron	
Well Name: PA	Well #: 411-27	API/UWI #: 05-045-21864	
Field: PARACHUTE	City (SAP): RIFLE	County/Parish: Garfield	State: Colorado
Lat: N 39.497 deg. OR N 39 deg. 29 min. 47.933 secs.		Long: W 107.989 deg. OR W -108 deg. 0 min. 39.143 secs.	
Contractor: Nabors		Rig/Platform Name/Num: Nabors 573	
Job Purpose: Cement Surface Casing			
Well Type: Development Well		Job Type: Cement Surface Casing	
Sales Person: SCOTT, KYLE		Srvc Supervisor: JAMISON, PRICE	MBU ID Emp #: 229155

**Job Personnel**

HES Emp Name	Exp Hrs	Emp #	HES Emp Name	Exp Hrs	Emp #	HES Emp Name	Exp Hrs	Emp #
JAMISON, PRICE W	7.5	229155	SALAZAR, PAUL Omar	7.5	445614	SPARKS, CLIFFORD Paul	7.5	502476
WOLFE, JON P	7.5	485217						

**Equipment**

HES Unit #	Distance-1 way	HES Unit #	Distance-1 way	HES Unit #	Distance-1 way	HES Unit #	Distance-1 way
10722398	30 mile	10867425	30 mile	10872429	30 mile	10897891	30 mile
11139330	30 mile	11259884	30 mile	11808847	30 mile		

**Job Hours**

Date	On Location Hours	Operating Hours	Date	On Location Hours	Operating Hours	Date	On Location Hours	Operating Hours
7/19/13	7.3	3						
<b>TOTAL</b>			<i>Total is the sum of each column separately</i>					

**Job**

**Job Times**

Formation Name	Formation Depth (MD)	Top	Bottom	Called Out	Date	Time	Time Zone
					19 - Jul - 2013	08:00	MST
Form Type			BHST	On Location	19 - Jul - 2013	12:30	MST
Job depth MD	2829. ft		Job Depth TVD	2845. ft	19 - Jul - 2013	17:18	MST
Water Depth			Wk Ht Above Floor	4. ft	19 - Jul - 2013	18:54	MST
Perforation Depth (MD)	From		To	Departed Loc	19 - Jul - 2013	20:00	MST

**Well Data**

Description	New / Used	Max pressure psig	Size in	ID in	Weight lbm/ft	Thread	Grade	Top MD ft	Bottom MD ft	Top TVD ft	Bottom TVD ft
OPEN HOLE				13.5				.	2845.	.	2845.
SURFACE CASING	Unknown		9.625	9.001	32.3		H-40	.	2829.	.	2829.

**Tools and Accessories**

Type	Size	Qty	Make	Depth	Type	Size	Qty	Make	Depth	Type	Size	Qty	Make
Guide Shoe					Packer					Top Plug			
Float Shoe					Bridge Plug					Bottom Plug			
Float Collar					Retainer					SSR plug set			
Insert Float										Plug Container			
Stage Tool										Centralizers			

**Miscellaneous Materials**

Gelling Agt	Conc	Surfactant	Conc	Acid Type	Qty	Conc %
Treatment Fld	Conc	Inhibitor	Conc	Sand Type	Size	Qty

**Fluid Data**

**Stage/Plug #: 1**

Fluid #	Stage Type	Fluid Name	Qty	Qty uom	Mixing Density lbm/gal	Yield ft <sup>3</sup> /sk	Mix Fluid Gal/sk	Rate bbl/min	Total Mix Fluid Gal/sk

**Stage/Plug #: 1**

Stage/Plug #: 1									
Fluid #	Stage Type	Fluid Name	Qty	Qty uom	Mixing Density lbm/gal	Yield ft <sup>3</sup> /sk	Mix Fluid Gal/sk	Rate bbl/min	Total Mix Fluid Gal/sk
1	Fresh Water Spacer		40.00	bbl	8.4	.0	.0	6.0	
2	VersaCem GJ1 Lead Cement	VARICEM (TM) CEMENT (452009)	460.0	sacks	12.3	2.38	13.75	8.0	13.75
13.75 Gal		FRESH WATER							
3	VersaCemGJ1 Tail Cement	VERSACEM (TM) SYSTEM (452010)	160.0	sacks	12.8	2.11	11.75	8.0	11.75
11.746 Gal		FRESH WATER							
4	Displacement Fluid		219.2	bbl	8.4	.0	.0	10.0	
Calculated Values		Pressures		Volumes					
Displacement	219.2	Shut In: Instant		Lost Returns	NO	Cement Slurry	253	Pad	
Top Of Cement	SURFACE	5 Min		Cement Returns	18	Actual Displacement	219.2	Treatment	
Frac Gradient		15 Min		Spacers	40	Load and Breakdown		Total Job	512
Rates									
Circulating	10	Mixing	8	Displacement	10	Avg. Job	8		
Cement Left In Pipe	Amount	44 ft	Reason	Shoe Joint					
Frac Ring # 1 @	ID	Frac ring # 2 @	ID	Frac Ring # 3 @	ID	Frac Ring # 4 @	ID		
The Information Stated Herein Is Correct				Customer Representative Signature					

*The Road to Excellence Starts with Safety*

<b>Sold To #:</b> 300721	<b>Ship To #:</b> 3010182	<b>Quote #:</b>	<b>Sales Order #:</b> 900592881
<b>Customer:</b> WPX ENERGY ROCKY MOUNTAIN LLC-EBUS		<b>Customer Rep:</b> Towers, Ron	
<b>Well Name:</b> PA		<b>Well #:</b> 411-27	<b>API/UWI #:</b> 05-045-21864
<b>Field:</b> PARACHUTE	<b>City (SAP):</b> RIFLE	<b>County/Parish:</b> Garfield	<b>State:</b> Colorado
<b>Legal Description:</b>			
<b>Lat:</b> N 39.497 deg. OR N 39 deg. 29 min. 47.933 secs.		<b>Long:</b> W 107.989 deg. OR W -108 deg. 0 min. 39.143 secs.	
<b>Contractor:</b> Nabors		<b>Rig/Platform Name/Num:</b> Nabors 573	
<b>Job Purpose:</b> Cement Surface Casing			<b>Ticket Amount:</b>
<b>Well Type:</b> Development Well		<b>Job Type:</b> Cement Surface Casing	
<b>Sales Person:</b> SCOTT, KYLE		<b>Srvc Supervisor:</b> JAMISON, PRICE	<b>MBU ID Emp #:</b> 229155

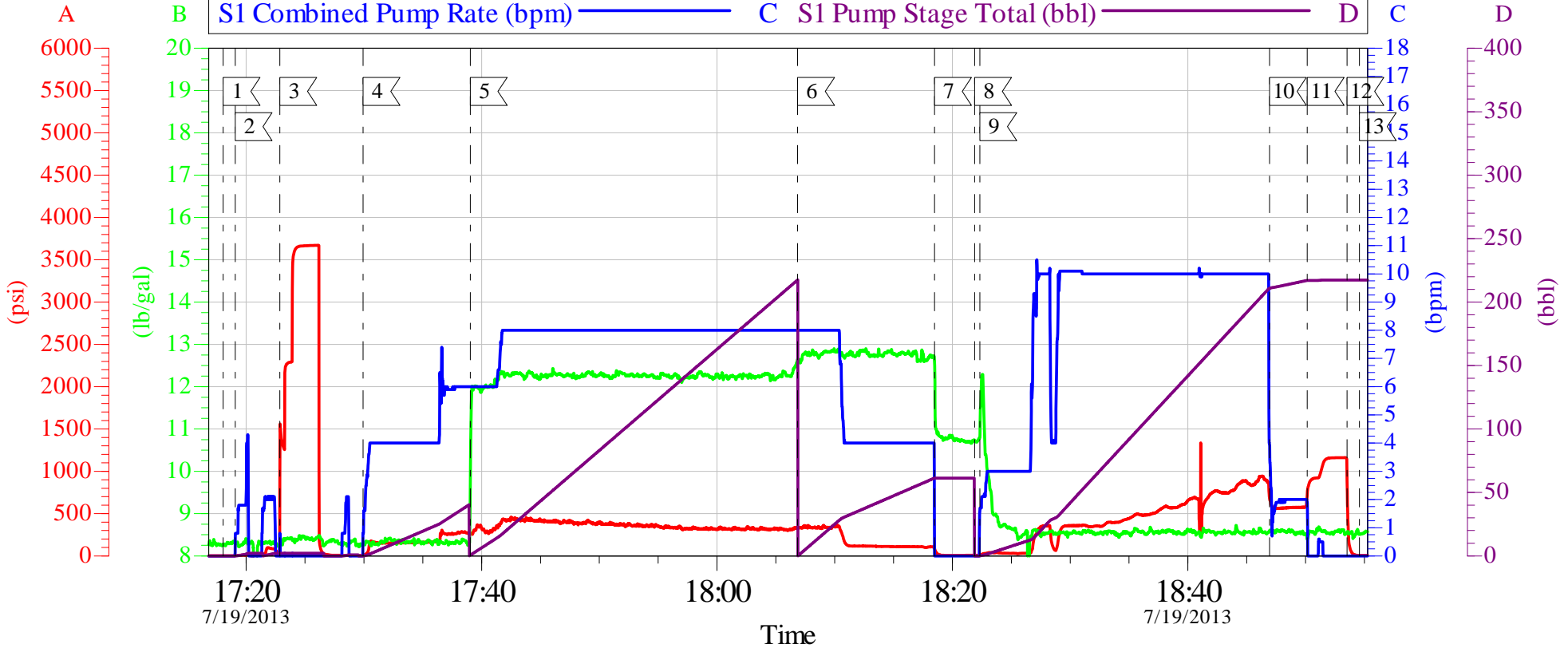
Activity Description	Date/Time	Cht #	Rate bbl/min	Volume bbl		Pressure psig		Comments
				Stage	Total	Tubing	Casing	
Call Out	07/19/2013 08:00							TD 2845 TP 2829 9.625 32.3 H-40 HOLE SIZE 13.5 SJ 44 MUD 10.4
Depart Yard Safety Meeting	07/19/2013 10:50							
Crew Leave Yard	07/19/2013 11:00							
Arrive At Loc	07/19/2013 12:30							
Assessment Of Location Safety Meeting	07/19/2013 12:40							
Wait on Customer or Customer Sub-Contractor Equip	07/19/2013 13:00							RUNNING & CIRCULATING
Wait on Customer or Customer Sub-Contractor Equipm	07/19/2013 14:50							
Pre-Rig Up Safety Meeting	07/19/2013 15:00							
Pre-Job Safety Meeting	07/19/2013 16:45							
Start Job	07/19/2013 17:18							
Prime Pumps	07/19/2013 17:19		2	2			86.0	FRESH WATER
Test Lines	07/19/2013 17:22						3000.0	
Pump Spacer	07/19/2013 17:29		6	40			270.0	FRESH WATER
Pump Lead Cement	07/19/2013 17:39		8	193			437.0	MIXED @ 12.3 PPG YIELD 2.38 WAT/REQ 13.75 460 SKS
Pump Tail Cement	07/19/2013 18:06		8	60.1			355.0	MIXED @ 12.8 PPG YIELD 2.11 WAT/REQ 11.75 160 SKS

Activity Description	Date/Time	Cht #	Rate bbl/min	Volume bbl		Pressure psig		Comments
				Stage	Total	Tubing	Casing	
Shutdown	07/19/2013 18:18							
Drop Plug	07/19/2013 18:21							
Pump Displacement	07/19/2013 18:22		10					FRESH WATER
Slow Rate	07/19/2013 18:46		2	209			836.0	
Bump Plug	07/19/2013 18:50		2	219.2			575.0	PRESSURED UP TO 1162 PSI
Check Floats	07/19/2013 18:53							FLOATS HELD
End Job	07/19/2013 18:54							CEMENT TO SURFACE 18 BBLS
Post-Job Safety Meeting (Pre Rig-Down)	07/19/2013 19:00							GOOD CIRCULATION THROUGHOUT JOB
Depart Location Safety Meeting	07/19/2013 19:50							CASING WAS NOT MOVED THROUGHOUT JOB
Crew Leave Location	07/19/2013 20:00							THANKS FOR USING HALLIBURTON BILL JAMISON & CREW

# WPX PA 411-27

## 9.625 SURFACE CASING

— A S1 Pass-Side Pump Pressure (psi)     — B S1 Downhole Density (lb/gal)     — C S1 Combined Pump Rate (bpm)     — D S1 Pump Stage Total (bbl)

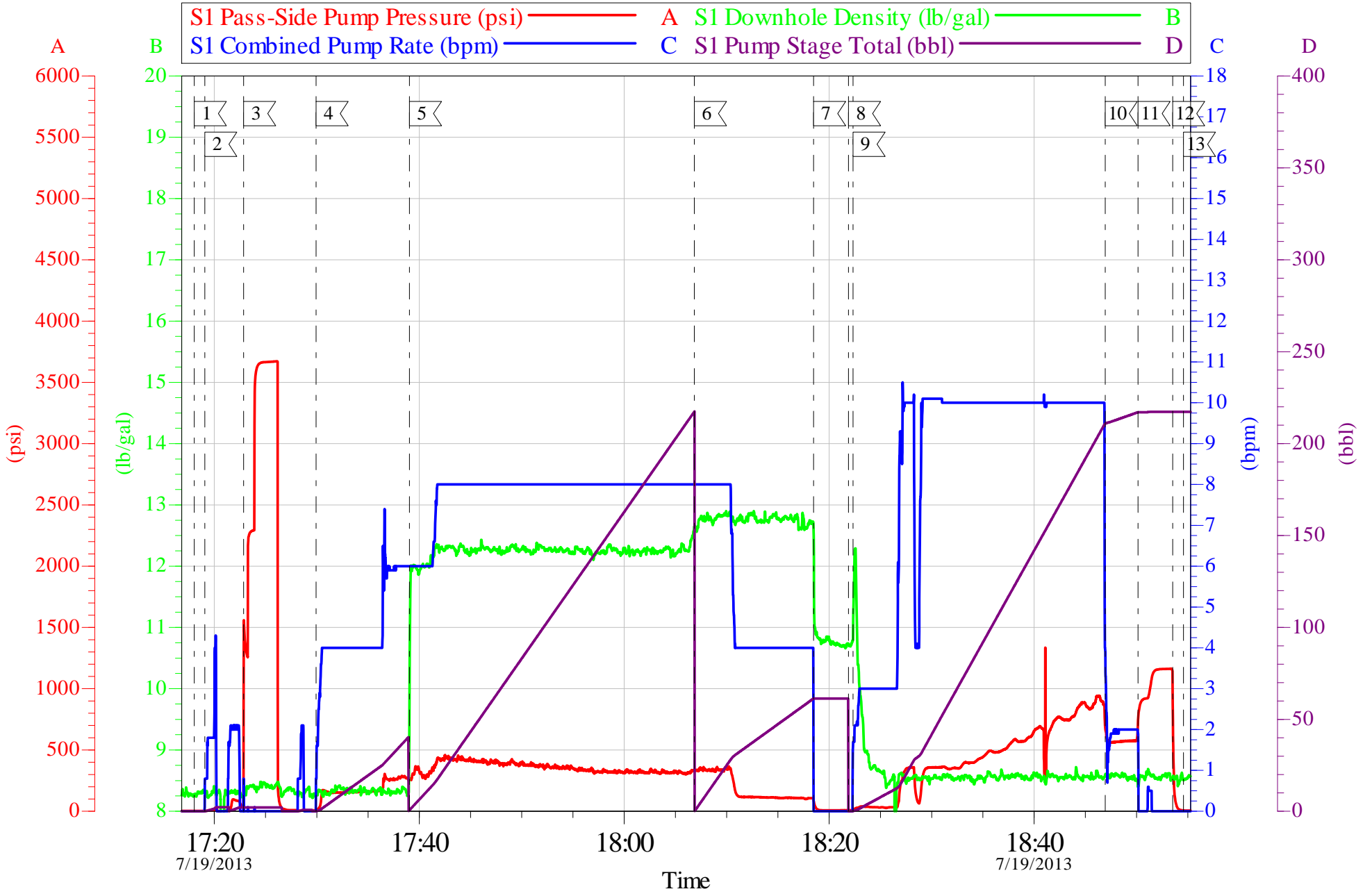


Local Event Log		
1 START JOB	17:18:02	2 PRIME LINES 17:19:04
3 TEST LINES	17:22:52	4 START FRESH WATER SPACER 17:29:56
5 START LEAD CEMENT	17:39:03	6 START TAIL CEMENT 18:06:51
7 SHUT DOWN	18:18:29	8 DROP PLUG 18:21:53
9 START DISPLACEMENT	18:22:20	10 SLOW RATE 18:46:56
11 BUMP PLUG	18:50:08	12 CHECK FLOATS 18:53:31
13 END JOB	18:54:34	

Customer: WPX	Job Date: 19-Jul-2013	Sales Order #: 900592881
Well Description: PA 411-27	Job Type: CEMENT	CO.REP: RON TOWERS
Supervisor: BILL JAMISON	Operator: JON WOLFE	Pump # 7: ADC/YES

OptiCem v6.4.10  
19-Jul-13 19:00

# WPX PA 411-27 9.625 SURFACE CASING



Customer: WPX	Job Date: 19-Jul-2013	Sales Order #: 900592881
Well Description: PA 411-27	Job Type: CEMENT	CO.REP: RON TOWERS
Supervisor: BILL JAMISON	Operator: JON WOLFE	Pump # 7: ADC/YES

OptiCem v6.4.10  
19-Jul-13 19:01

# HALLIBURTON

## Water Analysis Report

Company: WILLIAMS PRODUCTION

Submitted by: BILL JAMISON

Attention: JOHN TROUT

Lease PA

Well # 411-27

Date: 7/19/2013

Date Rec.: 7/19/2013

S.O.# 900592881

Job Type: 9 5/8" SURFACE

Specific Gravity	<i>MAX</i>	<b>1</b>
pH	<i>8</i>	<b>6.9</b>
Potassium (K)	<i>5000</i>	<b>400 Mg / L</b>
Calcium (Ca)	<i>500</i>	<b>120 Mg / L</b>
Iron (FE2)	<i>300</i>	<b>0 Mg / L</b>
Chlorides (Cl)	<i>3000</i>	<b>0 Mg / L</b>
Sulfates (SO <sub>4</sub> )	<i>1500</i>	<b>-200 Mg / L</b>
Chlorine (Cl <sub>2</sub> )		<b>0 Mg / L</b>
Temp	<i>40-80</i>	<b>72 Deg</b>
Total Dissolved Solids		<b>210 Mg / L</b>

Respectfully: BILL JAMISON

Title: CEMENTING SUPERVISOR

Location: Grand Junction, CO

NOTICE:

This report is limited to the described sample tested. Any person using or relying on this report agrees that Halliburton shall not be liable for any loss or damage whether due to act or omission resulting from such report or its use.

<b>Sales Order #:</b> 900592881	<b>Line Item:</b> 10	<b>Survey Conducted Date:</b> 7/19/2013
<b>Customer:</b> WPX ENERGY ROCKY MOUNTAIN LLC-EBUS		<b>Job Type (BOM):</b> CMT SURFACE CASING BOM
<b>Customer Representative:</b> RON TOWERS		<b>API / UWI: (leave blank if unknown)</b> 05-045-21864
<b>Well Name:</b> PA		<b>Well Number:</b> 411-27
<b>Well Type:</b> Development Well	<b>Well Country:</b> United States of America	
<b>H2S Present:</b>	<b>Well State:</b> Colorado	<b>Well County:</b> Garfield

Dear Customer,

We hope that you were satisfied with the service quality of this job performed by Halliburton. It is the aim of our management and service personnel to deliver equipment and service of a standard unmatched in the service sector of the energy industry.

Please take the time to let us know if our performance met with your satisfaction. Please be as critical as possible to ensure we constantly improve our service. Your comments are of great value to us and are intended for the exclusive use of Halliburton.

### CUSTOMER SATISFACTION SURVEY

CATEGORY	CUSTOMER SATISFACTION RESPONSE	
Survey Conducted Date	The date the survey was conducted	7/19/2013
Survey Interviewer	The survey interviewer is the person who initiated the survey.	PRICE JAMISON (HAL9235)
Customer Participation	Did the customer participate in this survey? (Y/N)	Yes
Customer Representative	Enter the Customer representative name	RON TOWERS
HSE	Was our HSE performance satisfactory? Circle Y or N	Yes
Equipment	Were you satisfied with our Equipment? Circle Y or N	Yes
Personnel	Were you satisfied with our people? Circle Y or N	Yes
Customer Comment	Customer's Comment	NONE

<b>CUSTOMER SIGNATURE</b>
---------------------------

<b>Sales Order #:</b> 900592881	<b>Line Item:</b> 10	<b>Survey Conducted Date:</b> 7/19/2013
<b>Customer:</b> WPX ENERGY ROCKY MOUNTAIN LLC-EBUS		<b>Job Type (BOM):</b> CMT SURFACE CASING BOM
<b>Customer Representative:</b> RON TOWERS		<b>API / UWI: (leave blank if unknown)</b> 05-045-21864
<b>Well Name:</b> PA		<b>Well Number:</b> 411-27
<b>Well Type:</b> Development Well	<b>Well Country:</b> United States of America	
<b>H2S Present:</b>	<b>Well State:</b> Colorado	<b>Well County:</b> Garfield

### KEY PERFORMANCE INDICATORS

General	
<b>Survey Conducted Date</b>	7/19/2013
The date the survey was conducted	

Cementing KPI Survey	
<b>Type of Job</b>	0
Select the type of job. (Cementing or Non-Cementing)	
<b>Select the Maximum Deviation range for this Job</b>	Vertical
What is the highest deviation for the job you just completed? This may not be the maximum well deviation.	
<b>Total Operating Time (hours)</b>	3
Total Operating Hours Including Rig-up, Pumping, Rig-down. Enter in decimal format.	
<b>HSE Incident, Accident, Injury</b>	No
HSE Incident, Accident, Injury. This should be recordable incidents only.	
<b>Was the job purpose achieved?</b>	Yes
Was the job delivered correctly as per customer agreed design?	
<b>Operating Hours (Pumping Hours)</b>	1
Total number of hours pumping fluid on this job. Enter in decimal format.	
<b>Customer Non-Productive Rig Time (hrs)</b>	0
Lost time due to Halliburton in the start, execution, or completion of an ordered service or product, or delays in a follow-on service. Enter in decimal format. 0 if none.	
<b>Type of Rig Classification Job Was Performed</b>	Drilling Rig (Portable)
Type Of Rig (classification) Job Was Performed On	
<b>Number Of JSAs Performed</b>	5
Number Of Jsas Performed	
<b>Number of Unplanned Shutdowns</b>	0
Unplanned shutdown is when injection stops for any period of time.	
<b>Was this a Primary Cement Job (Yes / No)</b>	Yes

<b>Sales Order #:</b> 900592881	<b>Line Item:</b> 10	<b>Survey Conducted Date:</b> 7/19/2013
<b>Customer:</b> WPX ENERGY ROCKY MOUNTAIN LLC-EBUS		<b>Job Type (BOM):</b> CMT SURFACE CASING BOM
<b>Customer Representative:</b> RON TOWERS		<b>API / UWI: (leave blank if unknown)</b> 05-045-21864
<b>Well Name:</b> PA		<b>Well Number:</b> 411-27
<b>Well Type:</b> Development Well	<b>Well Country:</b> United States of America	
<b>H2S Present:</b>	<b>Well State:</b> Colorado	<b>Well County:</b> Garfield

Primary Cement Job= Casing job, Liner job, or Tie-back job.	
<b>Did We Run Wiper Plugs?</b> Did We Run Top And Bottom Casing Wiper Plugs?	Top
<b>Mixing Density of Job Stayed in Designed Density Range (0-100%)</b> Density Range defined as +/- .20 ppg. Calculation: Total BBLs cement mixed at designed density divided by total BBLs of cement multiplied by 100	98
<b>Was Automated Density Control Used?</b> Was Automated Density Control (ADC) Used ?	Yes
<b>Pump Rate (percent) of Job Stayed At Designed Pump Rate</b> Pump Rate range defined as +/- 1bbl/min. Calculation: Total BBLs of fluid pumped at the designed rate divided by Total BBLs of fluid pumped, multiplied by 100	98
<b>Nbr of Remedial Sqz Jobs Rqd - Competition</b> Number Of Remedial Squeeze Jobs Required After Primary Job Performed By Competition	0
<b>Nbr of Remedial Plug Jobs Rqd - HES</b> Number Of Remedial Plug Jobs Needed After Primary Plug Pumped By HES	0
<b>Nbr of Remedial Sqz Jobs Rqd - HES</b> Number Of Remedial Squeeze Jobs Required After Primary Job Performed By HES	0