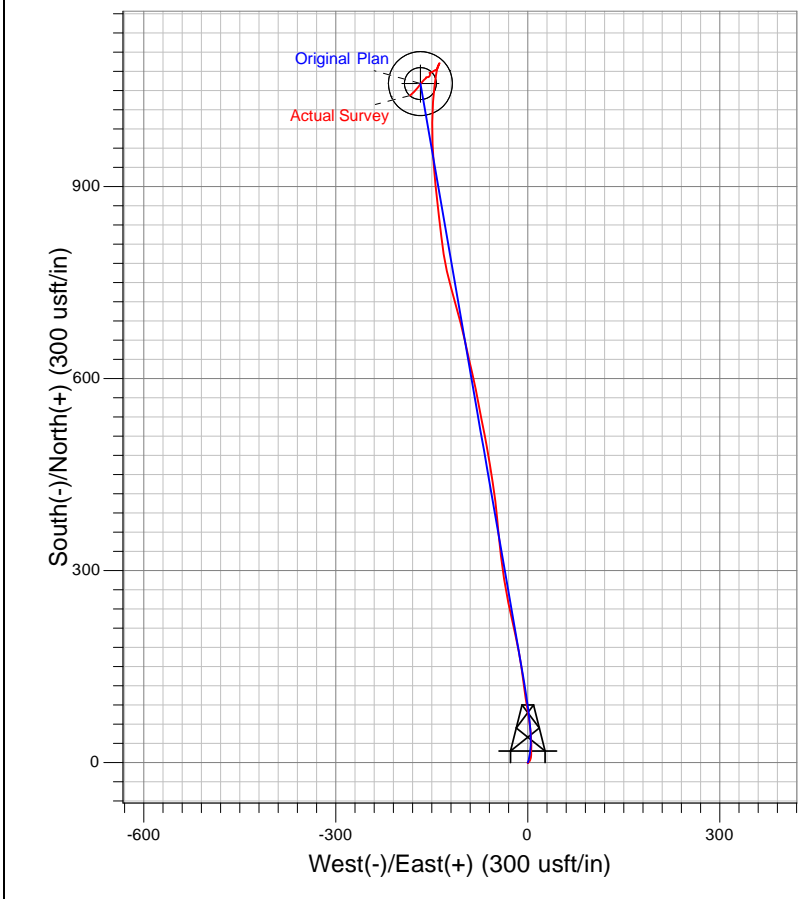
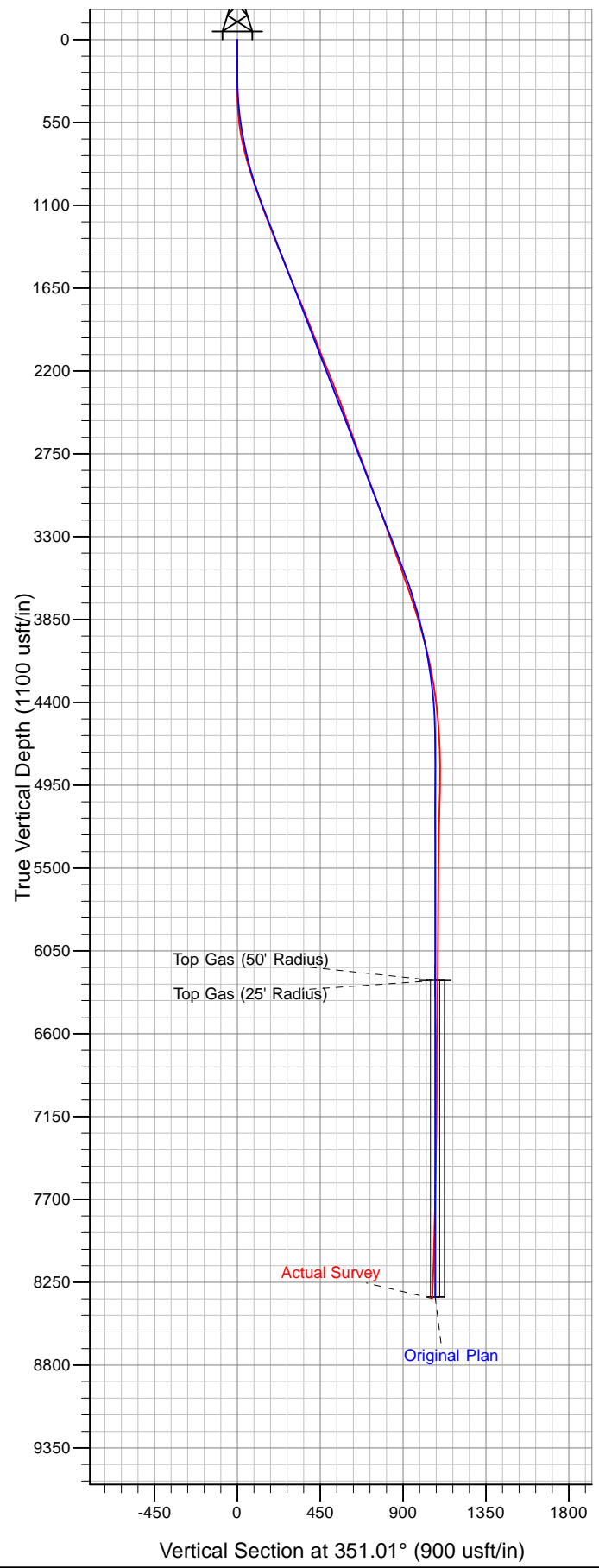




Well Name: PA 411-27
 Surface Location: DOE 1-W-27 Pad
 North American Datum 1983 , US State Plane 1983 . Colorado Central Zone
 Ground Elevation: 5840.00

+N/-S	+E/-W	Northing	Easting	Latitude	Longitude	Slot
0.00	0.00	1615405.20	2297661.60	39.49665	-107.98913	A7

KELLY BUSHING @ 5866.00usft (Nabors 573 (26' KB))



Azimuths to True North
 Magnetic North: 10.08°
 Magnetic Field
 Strength: 52042.8snT
 Dip Angle: 65.68°
 Date: 7/13/2013
 Model: IGRF2010