


Target  
Bottom Hole  T10N, R58W, 6th P.M.

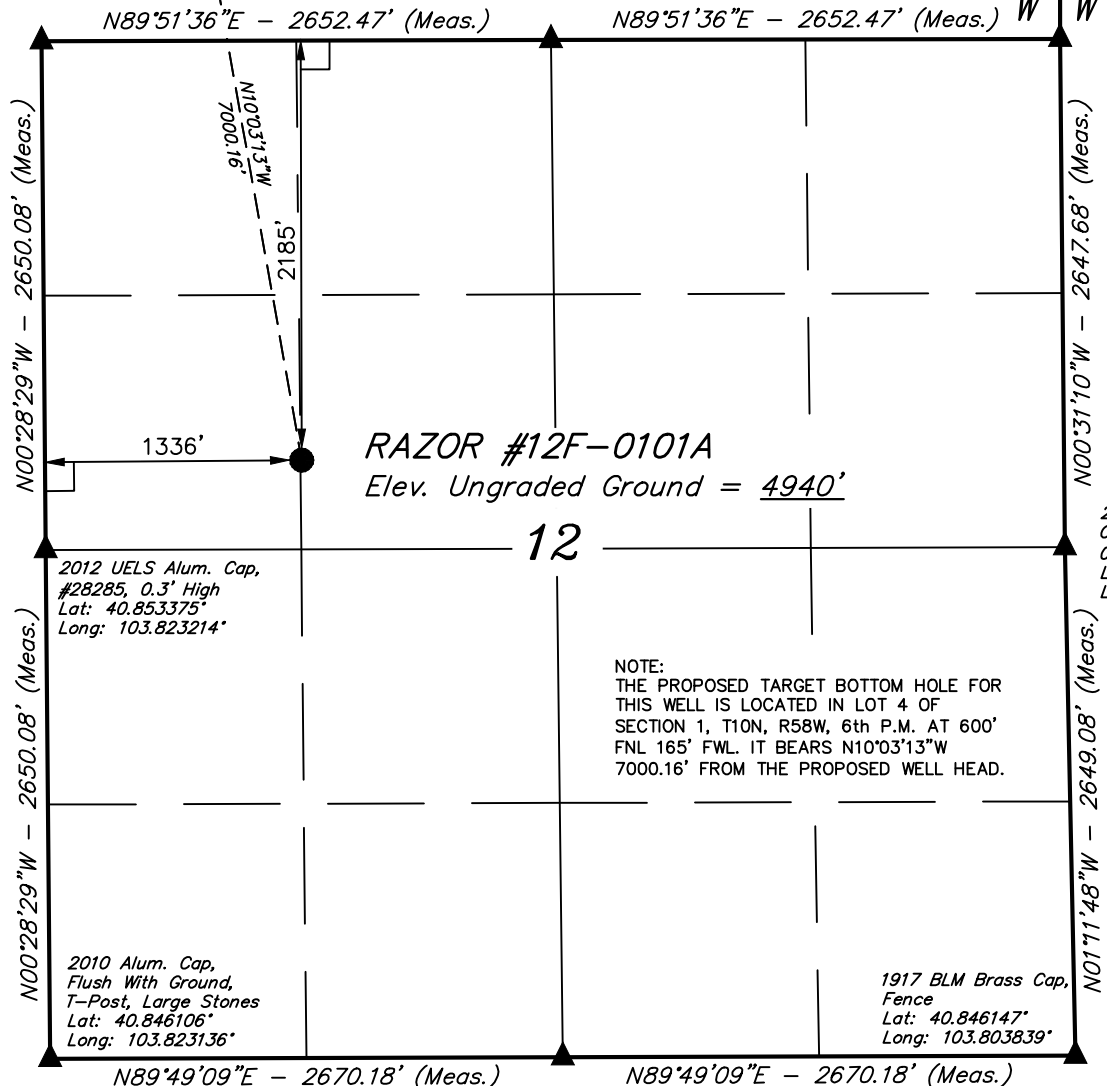
2012 UELS Alum. Cap,  
#28285, 0.3' High  
Lat: 40.860647°  
Long: 103.823292°

2012 UELS Alum. Cap,  
#28285, 0.3' High  
Lat: 40.860664°  
Long: 103.813706°

2006 Private Alum.  
Cap, #24949,  
0.6' Below Ground  
Lat: 40.860678°  
Long: 103.804117°

R  
58  
W

R  
57  
W

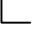




NOTE:  
THE PROPOSED TARGET BOTTOM HOLE FOR  
THIS WELL IS LOCATED IN LOT 4 OF  
SECTION 1, T10N, R58W, 6th P.M. AT 600'  
FNL 165' FWL. IT BEARS N10°03'13"W  
7000.16' FROM THE PROPOSED WELL HEAD.

2012 UELS Alum. Cap,  
#28285, 0.3' High  
Lat: 40.846125°  
Long: 103.813489°

PDOP = 2.1

#### LEGEND:

-  = 90° SYMBOL
-  = PROPOSED WELL HEAD.
-  = SECTION CORNERS LOCATED.

NAD 83 (SURFACE LOCATION)  
LATITUDE = 40°51'16.78" (40.854661)  
LONGITUDE = 103°49'06.23" (103.818397)  
NAD 27 (SURFACE LOCATION)  
LATITUDE = 40°51'16.83" (40.854675)  
LONGITUDE = 103°49'04.43" (103.817897)

#### WHITING OIL & GAS CORP.

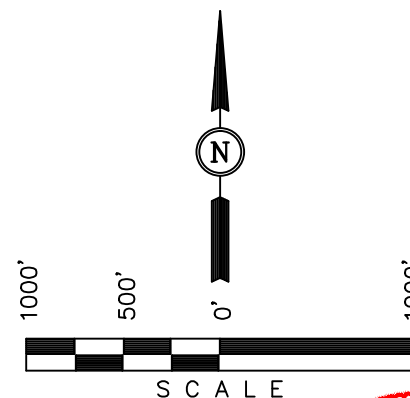
Well location, RAZOR #12F-0101A (SURFACE LOCATION), located as shown in the SE 1/4 NW 1/4 of Section 12, T10N, R58W, 6th P.M., Weld County, Colorado.

#### BASIS OF ELEVATION

SPOT ELEVATION LOCATED AT THE NORTHEAST CORNER OF SECTION 15, T9N, R58W, 6th P.M. TAKEN FROM THE GATEHOOK SPRING, QUADRANGLE, COLORADO, WELD COUNTY, 7.5 MINUTE QUAD (TOPOGRAPHIC MAP) PUBLISHED BY THE UNITED STATES DEPARTMENT OF THE INTERIOR, GEOLOGICAL SURVEY. SAID ELEVATION IS MARKED AS BEING 4679 FEET.

#### BASIS OF BEARINGS

BASIS OF BEARINGS IS A G.P.S. OBSERVATION.



#### CERTIFICATION

THIS IS TO CERTIFY THAT THE ABOVE PLAT WAS PREPARED FROM FIELD NOTES OF ACTUAL SURVEYS MADE BY ME OR UNDER MY SUPERVISION AND THAT THE SAME ARE TRUE AND CORRECT TO THE BEST OF MY KNOWLEDGE AND BELIEF.

REGISTERED LAND SURVEYOR  
REGISTRATION NO. 28285  
STATE OF COLORADO

REV: 07-02-13 B.D.H.  
REV: 06-03-13 B.D.H.

UINTAH ENGINEERING & LAND SURVEYING  
85 SOUTH 200 EAST - VERNAL, UTAH 84078  
(435) 789-1017

SCALE 1" = 1000'	DATE SURVEYED: 05-14-13	DATE DRAWN: 05-20-13
PARTY J.H. K.H. A.D.	REFERENCES G.L.O. PLAT	
WEATHER WARM	FILE WHITING OIL & GAS CORP.	

T10N, R58W, 6th P.M.

WHITING OIL & GAS CORP.

2012 UELS Alum. Cap,  
#28285, 0.3' High  
Lat: 40.875219°  
Long: 103.823419°

2012 UELS Alum. Cap,  
#28285, 0.3' High  
Lat: 40.875256°  
Long: 103.813842°

1917 BLM Brass Cap,  
0.5' High, N-W Fence  
Lat: 40.875286°  
Long: 103.804261°

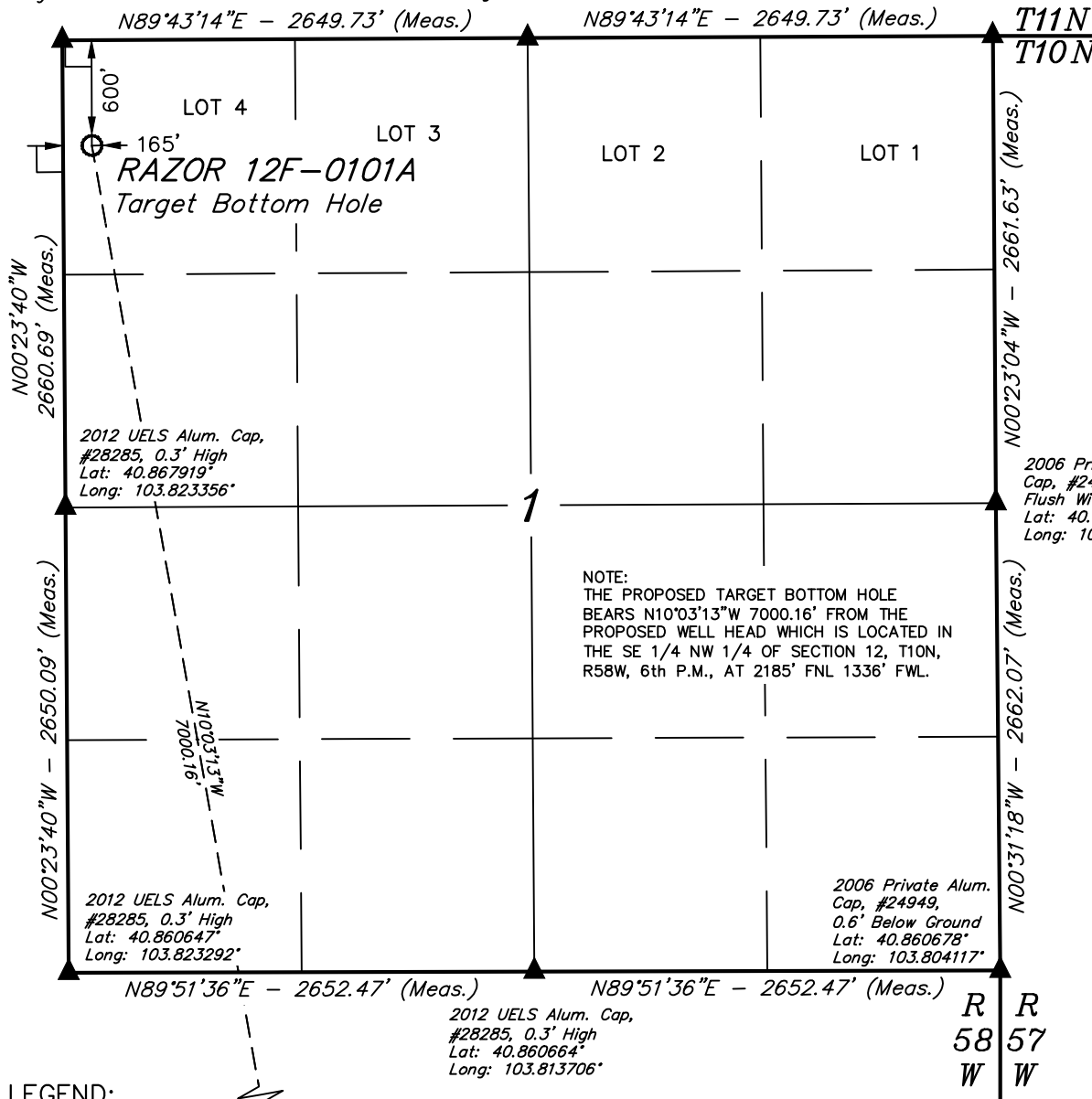
Well location, RAZOR #12F-0101A (TARGET BOTTOM HOLE), located as shown in LOT 4 of Section 1, T10N, R58W, 6th P.M., Weld County, Colorado.

### BASIS OF ELEVATION

SPOT ELEVATION LOCATED AT THE NORTHEAST CORNER OF SECTION 15, T9N, R58W, 6th P.M. TAKEN FROM THE GATEHOOK SPRING, QUADRANGLE, COLORADO, WELD COUNTY, 7.5 MINUTE QUAD (TOPOGRAPHIC MAP) PUBLISHED BY THE UNITED STATES DEPARTMENT OF THE INTERIOR, GEOLOGICAL SURVEY. SAID ELEVATION IS MARKED AS BEING 4679 FEET.

### BASIS OF BEARINGS

BASIS OF BEARINGS IS A G.P.S. OBSERVATION.

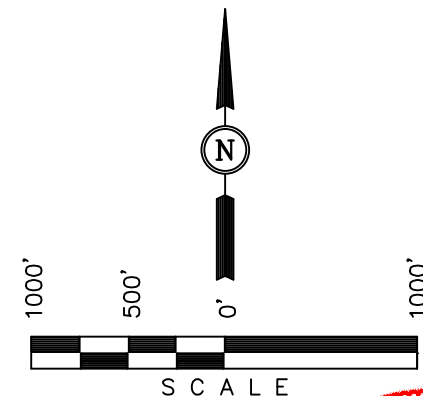


NOTE:  
THE PROPOSED TARGET BOTTOM HOLE BEARS N10°03'13\"W 7000.16' FROM THE PROPOSED WELL HEAD WHICH IS LOCATED IN THE SE 1/4 NW 1/4 OF SECTION 12, T10N, R58W, 6th P.M., AT 2185' FNL 1336' FWL.

2006 Private Alum. Cap, #24949,  
Flush With Ground  
Lat: 40.867983°  
Long: 103.804203°

2006 Private Alum. Cap, #24949,  
0.6' Below Ground  
Lat: 40.860678°  
Long: 103.804117°

2012 UELS Alum. Cap,  
#28285, 0.3' High  
Lat: 40.860664°  
Long: 103.813706°



### CERTIFICATION

THIS IS TO CERTIFY THAT THE ABOVE PLAT WAS PREPARED FROM FIELD NOTES OF ACTUAL SURVEYS MADE BY ME OR UNDER MY SUPERVISION AND THAT THE SAME ARE TRUE AND CORRECT TO THE BEST OF MY KNOWLEDGE AND BELIEF.

REGISTERED LAND SURVEYOR  
REGISTRATION NO. 28285  
STATE OF COLORADO 05-16-13

REV: 07-02-13 B.D.H.  
REV: 06-03-13 B.D.H.

**UINTAH ENGINEERING & LAND SURVEYING**  
85 SOUTH 200 EAST - VERNAL, UTAH 84078  
(435) 789-1017

### LEGEND:

- └ = 90° SYMBOL
- = PROPOSED WELL HEAD.
- ▲ = SECTION CORNERS LOCATED.

NAD 83 (TARGET BOTTOM HOLE)
LATITUDE = 40°52'24.88" (40.873578)
LONGITUDE = 103°49'22.11" (103.822808)
NAD 27 (TARGET BOTTOM HOLE)
LATITUDE = 40°52'24.93" (40.873592)
LONGITUDE = 103°49'20.31" (103.822308)

SCALE 1" = 1000'	DATE SURVEYED: 05-14-13	DATE DRAWN: 05-20-13
PARTY J.H. K.H. A.D.	REFERENCES G.L.O. PLAT	
WEATHER WARM	FILE WHITING OIL & GAS CORP.	