

Location:	COLORADO	Slot:	SLOT#06 SPURLING 34N-34HZ (377' FNL & 1028' FWL, SEC.34)
Field:	WELD COUNTY (KERR MCGEE)	Well:	SPURLING 34N-34HZ
Facility:	SEC.34-T2N-R67W	Wellbore:	SPURLING 34N-34HZ PWB

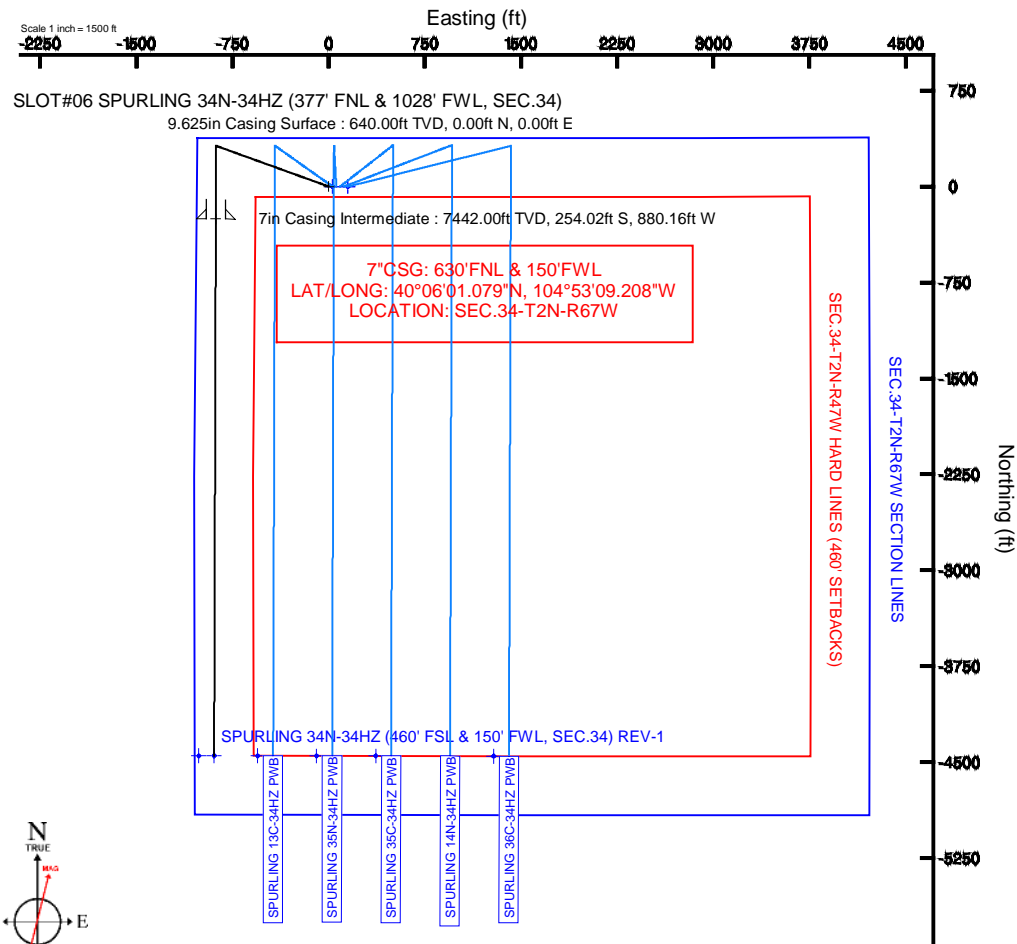
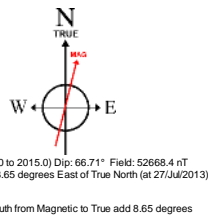
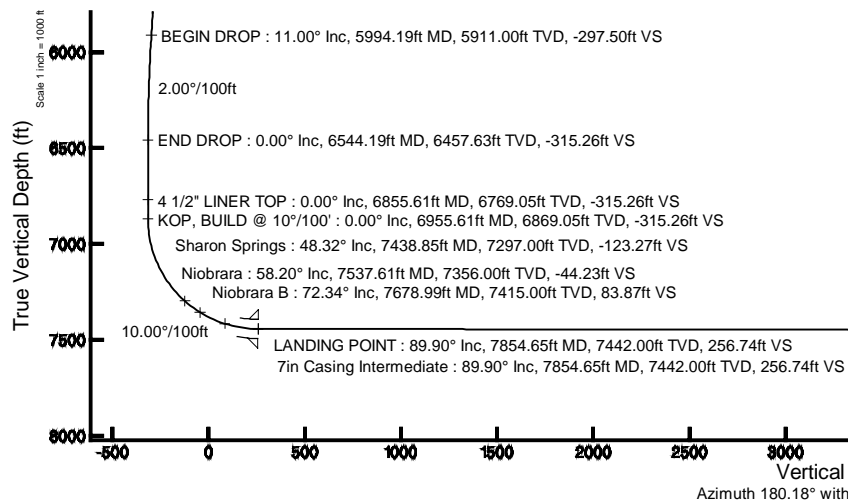
Plot reference wellpath is SPURLING 34N-34HZ (PERMIT REV-1) PWP	
True vertical depths are referenced to PERMIT (17 KB) (RKB)	Grid System: NAD83 / Lambert Colorado SP, Northern Zone (501), US feet
Measured depths are referenced to PERMIT (17 KB) (RKB)	North Reference: True north
PERMIT (17 KB) (RKB) to Mean Sea Level: 5030 feet	Scale: True distance
Mean Sea Level to Mud line (At Slt: SLO7060 SPURLING 34N-34HZ (377 FNL & 1028 FWL, SEC.34): 0 feet	Depths are in feet
Coordinates are in feet referenced to Slt0	Created by: robale01 on 01/Aug/2013

Facility Name				Grid East (US ft)	Grid North (US ft)	Latitude	Longitude
SEC 34-T2N-R67W				317281.756	1280239.992	40°06'03.593"N	104°52'55.951"W
Slot	Local N (ft)	Local E (ft)		Grid East (US ft)	Grid North (US ft)	Latitude	Longitude
SLOT#06 SPURLING 34N-34HZ (377 FNL & 102# FWL, SEC.34)	-0.40	-150.05		3172668.714	1280238.543	40°06'03.588"N	104°52'57.882"W
PERMIT (17' KB) (RKB) to Mud line (A Slot: SLOT#06 SPURLING 34N-34HZ (377 FNL & 102# FWL, SEC.34))						5030R	
Mean Sea Level to Mud line (A Slot: SLOT#06 SPURLING 34N-34HZ (377 FNL & 102# FWL, SEC.34))						OR	
PERMIT (17' KB) (RKB) to Mean Sea Level						5030R	

Start MD (ft)	End MD (ft)	Tool	Model	Log Name/Comment	Wellbore
17.00	7854.65	NaviTrak	NaviTrak (Standard)		SPURLING 34N-34HZ PWB
7854.65	12049.36	OnTrak	OnTrak (Standard)		SPURLING 34N-34HZ PWB

Name	MD (ft)	TVD (ft)	Local N (ft)	Local E (ft)	Grid East (US ft)	Grid North (US ft)	Latitude	Longitude
SEC 34-T2N-R47W HARD LINES (460' SETBACKS)		5030.00	0.41	149.98	3172818.68	1280239.99	40°06'03.593"N	104°52'55.952"W
SEC 34-T2N-R67W SECTION LINES		5030.00	0.41	149.98	3172818.68	1280239.99	40°06'03.593"N	104°52'55.952"W
SPURLING 34N-34HZ (460' FSL & 150' PWL, SEC 34) REV-1	12049.36	7449.00	-4448.71	-893.12	3171806.62	1275783.91	40°05'19.626"N	104°53'09.373"W

Design Comment	MD (ft)	Inc (°)	Az (°)	TVD (ft)	Local N (ft)	Local E (ft)	DLS (°/100ft)	VS (ft)
TIE-ON	17.00	0.000	289.900	17.00	0.00	0.00	0.00	0.00
BEGIN NUDGE	1100.00	0.000	289.900	1100.00	0.00	0.00	0.00	0.00
END NUDGE	1650.00	11.000	289.900	1646.63	17.92	-49.49	2.00	-17.76
BEGIN DROP	5994.19	11.000	289.900	5911.00	300.06	-828.91	0.00	-297.50
END DROP	6544.19	0.000	180.177	6457.63	317.98	-878.40	2.00	-315.26
KOP, BUILD @ 10°/100'	6955.61	0.000	180.177	6869.05	317.98	-878.40	0.00	-315.26
LANDING POINT	7854.65	89.904	180.177	7442.00	-254.02	-880.16	10.00	256.74
TOTAL DEPTH	12049.36	89.904	180.177	7449.00	-4448.71	-893.12	0.00	4451.45





Planned Wellpath Report

SPURLING 34N-34HZ (PERMIT REV-1) PWP

Page 1 of 6



REFERENCE WELLPATH IDENTIFICATION

Operator	KERR-MCGEE OIL & GAS ONSHORE LP	Slot	SLOT#06 SPURLING 34N-34HZ (377' FNL & 1028' FWL, SEC.34)
Area	COLORADO	Well	SPURLING 34N-34HZ
Field	WELD COUNTY (KERR MCGEE)	Wellbore	SPURLING 34N-34HZ PWB
Facility	SEC.34-T2N-R67W		

REPORT SETUP INFORMATION

Projection System	NAD83 / Lambert Colorado SP, Northern Zone (501), US feet	Software System	WellArchitect® 4.0.0
North Reference	True	User	Robiale01
Scale	0.99996	Report Generated	01/Aug/2013 at 09:38
Convergence at slot	n/a	Database/Source file	WA_ANADARKO/SPURLING_34N-34HZ_PWB.xml

WELLPATH LOCATION

	Local coordinates		Grid coordinates		Geographic coordinates	
	North[ft]	East[ft]	Easting[US ft]	Northing[US ft]	Latitude	Longitude
Slot Location	-0.40	-150.05	3172668.71	1280238.54	40°06'03.589"N	104°52'57.882"W
Facility Reference Pt			3172818.76	1280239.99	40°06'03.593"N	104°52'55.951"W
Field Reference Pt			3197771.84	1268891.29	40°04'09.600"N	104°47'36.000"W

WELLPATH DATUM

Calculation method	Minimum curvature	PERMIT (17' KB) (RKB) to Facility Vertical Datum	5030.00ft
Horizontal Reference Pt	Slot	PERMIT (17' KB) (RKB) to Mean Sea Level	5030.00ft
Vertical Reference Pt	PERMIT (17' KB) (RKB)	PERMIT (17' KB) (RKB) to Mud Line at Slot (SLOT#06 SPURLING 34N-34HZ (377' FNL & 1028' FWL, SEC.34))	5030.00ft
MD Reference Pt	PERMIT (17' KB) (RKB)	Section Origin	N 0.00, E 0.00 ft
Field Vertical Reference	Mean Sea Level	Section Azimuth	180.18°



Planned Wellpath Report

SPURLING 34N-34HZ (PERMIT REV-1) PWP

Page 2 of 6



REFERENCE WELLPATH IDENTIFICATION

Operator	KERR-MCGEE OIL & GAS ONSHORE LP	Slot	SLOT#06 SPURLING 34N-34HZ (377' FNL & 1028' FWL, SEC.34)
Area	COLORADO	Well	SPURLING 34N-34HZ
Field	WELD COUNTY (KERR MCGEE)	Wellbore	SPURLING 34N-34HZ PWB
Facility	SEC.34-T2N-R67W		

WELLPATH DATA (136 stations) † = interpolated/extrapolated station

MD [ft]	Inclination [°]	Azimuth [°]	TVD [ft]	Vert Sect [ft]	North [ft]	East [ft]	Latitude	Longitude	DLS [°/100ft]	Comments
0.00†	0.000	289.900	0.00	0.00	0.00	0.00	40°06'03.589"N	104°52'57.882"W	0.00	
17.00	0.000	289.900	17.00	0.00	0.00	0.00	40°06'03.589"N	104°52'57.882"W	0.00	TIE-ON
117.00†	0.000	289.900	117.00	0.00	0.00	0.00	40°06'03.589"N	104°52'57.882"W	0.00	
217.00†	0.000	289.900	217.00	0.00	0.00	0.00	40°06'03.589"N	104°52'57.882"W	0.00	
317.00†	0.000	289.900	317.00	0.00	0.00	0.00	40°06'03.589"N	104°52'57.882"W	0.00	
417.00†	0.000	289.900	417.00	0.00	0.00	0.00	40°06'03.589"N	104°52'57.882"W	0.00	
517.00†	0.000	289.900	517.00	0.00	0.00	0.00	40°06'03.589"N	104°52'57.882"W	0.00	
590.00†	0.000	289.900	590.00	0.00	0.00	0.00	40°06'03.589"N	104°52'57.882"W	0.00	Fox Hills Base
617.00†	0.000	289.900	617.00	0.00	0.00	0.00	40°06'03.589"N	104°52'57.882"W	0.00	
717.00†	0.000	289.900	717.00	0.00	0.00	0.00	40°06'03.589"N	104°52'57.882"W	0.00	
817.00†	0.000	289.900	817.00	0.00	0.00	0.00	40°06'03.589"N	104°52'57.882"W	0.00	
917.00†	0.000	289.900	917.00	0.00	0.00	0.00	40°06'03.589"N	104°52'57.882"W	0.00	
1017.00†	0.000	289.900	1017.00	0.00	0.00	0.00	40°06'03.589"N	104°52'57.882"W	0.00	
1100.00	0.000	289.900	1100.00	0.00	0.00	0.00	40°06'03.589"N	104°52'57.882"W	0.00	BEGIN NUDGE
1117.00†	0.340	289.900	1117.00	-0.02	0.02	-0.05	40°06'03.589"N	104°52'57.883"W	2.00	
1217.00†	2.340	289.900	1216.97	-0.81	0.81	-2.25	40°06'03.597"N	104°52'57.911"W	2.00	
1317.00†	4.340	289.900	1316.79	-2.77	2.80	-7.72	40°06'03.617"N	104°52'57.981"W	2.00	
1417.00†	6.340	289.900	1416.35	-5.91	5.96	-16.47	40°06'03.648"N	104°52'58.094"W	2.00	
1517.00†	8.340	289.900	1515.53	-10.22	10.31	-28.49	40°06'03.691"N	104°52'58.249"W	2.00	
1617.00†	10.340	289.900	1614.20	-15.70	15.84	-43.75	40°06'03.745"N	104°52'58.445"W	2.00	
1650.00	11.000	289.900	1646.63	-17.76	17.92	-49.49	40°06'03.766"N	104°52'58.519"W	2.00	END NUDGE
1717.00†	11.000	289.900	1712.40	-22.08	22.27	-61.51	40°06'03.809"N	104°52'58.674"W	0.00	
1817.00†	11.000	289.900	1810.56	-28.52	28.76	-79.45	40°06'03.873"N	104°52'58.904"W	0.00	
1917.00†	11.000	289.900	1908.72	-34.96	35.26	-97.40	40°06'03.937"N	104°52'59.135"W	0.00	
2017.00†	11.000	289.900	2006.88	-41.39	41.75	-115.34	40°06'04.002"N	104°52'59.366"W	0.00	
2117.00†	11.000	289.900	2105.05	-47.83	48.25	-133.28	40°06'04.066"N	104°52'59.597"W	0.00	
2217.00†	11.000	289.900	2203.21	-54.27	54.74	-151.22	40°06'04.130"N	104°52'59.828"W	0.00	
2317.00†	11.000	289.900	2301.37	-60.71	61.24	-169.16	40°06'04.194"N	104°53'00.059"W	0.00	
2417.00†	11.000	289.900	2399.54	-67.15	67.73	-187.10	40°06'04.258"N	104°53'00.290"W	0.00	
2517.00†	11.000	289.900	2497.70	-73.59	74.23	-205.04	40°06'04.322"N	104°53'00.521"W	0.00	
2617.00†	11.000	289.900	2595.86	-80.03	80.72	-222.99	40°06'04.387"N	104°53'00.752"W	0.00	
2717.00†	11.000	289.900	2694.02	-86.47	87.21	-240.93	40°06'04.451"N	104°53'00.982"W	0.00	
2817.00†	11.000	289.900	2792.19	-92.91	93.71	-258.87	40°06'04.515"N	104°53'01.213"W	0.00	
2917.00†	11.000	289.900	2890.35	-99.35	100.20	-276.81	40°06'04.579"N	104°53'01.444"W	0.00	
3017.00†	11.000	289.900	2988.51	-105.79	106.70	-294.75	40°06'04.643"N	104°53'01.675"W	0.00	
3117.00†	11.000	289.900	3086.67	-112.23	113.19	-312.69	40°06'04.708"N	104°53'01.906"W	0.00	
3217.00†	11.000	289.900	3184.84	-118.67	119.69	-330.64	40°06'04.772"N	104°53'02.137"W	0.00	
3317.00†	11.000	289.900	3283.00	-125.11	126.18	-348.58	40°06'04.836"N	104°53'02.368"W	0.00	
3417.00†	11.000	289.900	3381.16	-131.54	132.68	-366.52	40°06'04.900"N	104°53'02.599"W	0.00	
3517.00†	11.000	289.900	3479.33	-137.98	139.17	-384.46	40°06'04.964"N	104°53'02.829"W	0.00	
3617.00†	11.000	289.900	3577.49	-144.42	145.67	-402.40	40°06'05.028"N	104°53'03.060"W	0.00	
3717.00†	11.000	289.900	3675.65	-150.86	152.16	-420.34	40°06'05.093"N	104°53'03.291"W	0.00	
3817.00†	11.000	289.900	3773.81	-157.30	158.66	-438.28	40°06'05.157"N	104°53'03.522"W	0.00	
3917.00†	11.000	289.900	3871.98	-163.74	165.15	-456.23	40°06'05.221"N	104°53'03.753"W	0.00	
4017.00†	11.000	289.900	3970.14	-170.18	171.65	-474.17	40°06'05.285"N	104°53'03.984"W	0.00	



Planned Wellpath Report

SPURLING 34N-34HZ (PERMIT REV-1) PWP

Page 3 of 6



REFERENCE WELLPATH IDENTIFICATION				
Operator	KERR-MCGEE OIL & GAS ONSHORE LP		Slot	SLOT#06 SPURLING 34N-34HZ (377' FNL & 1028' FWL, SEC.34)
Area	COLORADO		Well	SPURLING 34N-34HZ
Field	WELD COUNTY (KERR MCGEE)		Wellbore	SPURLING 34N-34HZ PWB
Facility	SEC.34-T2N-R67W			

WELLPATH DATA (136 stations) † = interpolated/extrapolated station										
MD [ft]	Inclination [°]	Azimuth [°]	TVD [ft]	Vert Sect [ft]	North [ft]	East [ft]	Latitude	Longitude	DLS [°/100ft]	Comments
4117.00†	11.000	289.900	4068.30	-176.62	178.14	-492.11	40°06'05.349"N	104°53'04.215"W	0.00	
4217.00†	11.000	289.900	4166.46	-183.06	184.64	-510.05	40°06'05.414"N	104°53'04.446"W	0.00	
4317.00†	11.000	289.900	4264.63	-189.50	191.13	-527.99	40°06'05.478"N	104°53'04.677"W	0.00	
4417.00†	11.000	289.900	4362.79	-195.94	197.63	-545.93	40°06'05.542"N	104°53'04.907"W	0.00	
4517.00†	11.000	289.900	4460.95	-202.38	204.12	-563.88	40°06'05.606"N	104°53'05.138"W	0.00	
4617.00†	11.000	289.900	4559.12	-208.82	210.61	-581.82	40°06'05.670"N	104°53'05.369"W	0.00	
4717.00†	11.000	289.900	4657.28	-215.26	217.11	-599.76	40°06'05.734"N	104°53'05.600"W	0.00	
4746.26†	11.000	289.900	4686.00	-217.14	219.01	-605.01	40°06'05.753"N	104°53'05.668"W	0.00	Sussex
4817.00†	11.000	289.900	4755.44	-221.70	223.60	-617.70	40°06'05.799"N	104°53'05.831"W	0.00	
4917.00†	11.000	289.900	4853.60	-228.13	230.10	-635.64	40°06'05.863"N	104°53'06.062"W	0.00	
5017.00†	11.000	289.900	4951.77	-234.57	236.59	-653.58	40°06'05.927"N	104°53'06.293"W	0.00	
5117.00†	11.000	289.900	5049.93	-241.01	243.09	-671.52	40°06'05.991"N	104°53'06.524"W	0.00	
5192.46†	11.000	289.900	5124.00	-245.87	247.99	-685.06	40°06'06.040"N	104°53'06.698"W	0.00	Shannon
5217.00†	11.000	289.900	5148.09	-247.45	249.58	-689.47	40°06'06.055"N	104°53'06.755"W	0.00	
5317.00†	11.000	289.900	5246.25	-253.89	256.08	-707.41	40°06'06.120"N	104°53'06.985"W	0.00	
5417.00†	11.000	289.900	5344.42	-260.33	262.57	-725.35	40°06'06.184"N	104°53'07.216"W	0.00	
5517.00†	11.000	289.900	5442.58	-266.77	269.07	-743.29	40°06'06.248"N	104°53'07.447"W	0.00	
5617.00†	11.000	289.900	5540.74	-273.21	275.56	-761.23	40°06'06.312"N	104°53'07.678"W	0.00	
5717.00†	11.000	289.900	5638.91	-279.65	282.06	-779.17	40°06'06.376"N	104°53'07.909"W	0.00	
5817.00†	11.000	289.900	5737.07	-286.09	288.55	-797.12	40°06'06.440"N	104°53'08.140"W	0.00	
5917.00†	11.000	289.900	5835.23	-292.53	295.05	-815.06	40°06'06.505"N	104°53'08.371"W	0.00	
5994.19	11.000	289.900	5911.00	-297.50	300.06	-828.91	40°06'06.554"N	104°53'08.549"W	0.00	BEGIN DROP
6017.00†	10.544	289.900	5933.41	-298.94	301.51	-832.91	40°06'06.568"N	104°53'08.601"W	2.00	
6117.00†	8.544	289.900	6032.02	-304.53	307.15	-848.50	40°06'06.624"N	104°53'08.801"W	2.00	
6217.00†	6.544	289.900	6131.15	-308.96	311.62	-860.85	40°06'06.668"N	104°53'08.960"W	2.00	
6317.00†	4.544	289.900	6230.68	-312.22	314.91	-869.93	40°06'06.701"N	104°53'09.077"W	2.00	
6417.00†	2.544	289.900	6330.48	-314.31	317.01	-875.74	40°06'06.722"N	104°53'09.152"W	2.00	
6517.00†	0.544	289.900	6430.44	-315.22	317.93	-878.28	40°06'06.731"N	104°53'09.184"W	2.00	
6544.19	0.000	180.177	6457.63	-315.26	317.98	-878.40	40°06'06.731"N	104°53'09.186"W	2.00	END DROP
6617.00†	0.000	180.177	6530.44	-315.26	317.98	-878.40	40°06'06.731"N	104°53'09.186"W	0.00	
6717.00†	0.000	180.177	6630.44	-315.26	317.98	-878.40	40°06'06.731"N	104°53'09.186"W	0.00	
6817.00†	0.000	180.177	6730.44	-315.26	317.98	-878.40	40°06'06.731"N	104°53'09.186"W	0.00	
6855.61†	0.000	180.177	6769.05	-315.26	317.98	-878.40	40°06'06.731"N	104°53'09.186"W	0.00	4 1/2" LINER TOP
6917.00†	0.000	180.177	6830.44	-315.26	317.98	-878.40	40°06'06.731"N	104°53'09.186"W	0.00	
6955.61	0.000	180.177	6869.05	-315.26	317.98	-878.40	40°06'06.731"N	104°53'09.186"W	0.00	KOP, BUILD @ 10°/100'
7017.00†	6.139	180.177	6930.32	-311.97	314.69	-878.41	40°06'06.699"N	104°53'09.186"W	10.00	
7117.00†	16.139	180.177	7028.31	-292.68	295.39	-878.47	40°06'06.508"N	104°53'09.187"W	10.00	
7217.00†	26.139	180.177	7121.47	-256.66	259.38	-878.58	40°06'06.152"N	104°53'09.188"W	10.00	
7317.00†	36.139	180.177	7206.95	-205.02	207.73	-878.74	40°06'05.642"N	104°53'09.190"W	10.00	
7417.00†	46.139	180.177	7282.16	-139.31	142.03	-878.94	40°06'04.992"N	104°53'09.193"W	10.00	
7438.85†	48.324	180.177	7297.00	-123.27	125.99	-878.99	40°06'04.834"N	104°53'09.193"W	10.00	Sharon Springs
7517.00†	56.139	180.177	7344.83	-61.54	64.26	-879.18	40°06'04.224"N	104°53'09.196"W	10.00	
7537.61†	58.200	180.177	7356.00	-44.23	46.94	-879.23	40°06'04.053"N	104°53'09.197"W	10.00	Niobrara
7617.00†	66.139	180.177	7393.04	25.93	-23.21	-879.45	40°06'03.359"N	104°53'09.199"W	10.00	
7678.99†	72.339	180.177	7415.00	83.87	-81.15	-879.63	40°06'02.787"N	104°53'09.202"W	10.00	Niobrara B



Planned Wellpath Report

SPURLING 34N-34HZ (PERMIT REV-1) PWP

Page 4 of 6



REFERENCE WELLPATH IDENTIFICATION

Operator	KERR-MCGEE OIL & GAS ONSHORE LP	Slot	SLOT#06 SPURLING 34N-34HZ (377' FNL & 1028' FWL, SEC.34)
Area	COLORADO	Well	SPURLING 34N-34HZ
Field	WELD COUNTY (KERR MCGEE)	Wellbore	SPURLING 34N-34HZ PWB
Facility	SEC.34-T2N-R67W		

WELLPATH DATA (136 stations) † = interpolated/extrapolated station

MD [ft]	Inclination [°]	Azimuth [°]	TVD [ft]	Vert Sect [ft]	North [ft]	East [ft]	Latitude	Longitude	DLS [°/100ft]	Comments
7717.00†	76.139	180.177	7425.32	120.44	-117.72	-879.74	40°06'02.426"N	104°53'09.203"W	10.00	
7817.00†	86.139	180.177	7440.71	219.12	-216.40	-880.05	40°06'01.450"N	104°53'09.207"W	10.00	
7854.65	89.904	180.177	7442.00	256.74	-254.02	-880.16	40°06'01.079"N	104°53'09.208"W	10.00	LANDING POINT
7917.00†	89.904	180.177	7442.11	319.09	-316.37	-880.36	40°06'00.462"N	104°53'09.211"W	0.00	
8017.00†	89.904	180.177	7442.28	419.09	-416.37	-880.67	40°05'59.474"N	104°53'09.215"W	0.00	
8117.00†	89.904	180.177	7442.44	519.09	-516.37	-880.97	40°05'58.486"N	104°53'09.219"W	0.00	
8217.00†	89.904	180.177	7442.61	619.09	-616.37	-881.28	40°05'57.498"N	104°53'09.223"W	0.00	
8317.00†	89.904	180.177	7442.78	719.09	-716.37	-881.59	40°05'56.510"N	104°53'09.227"W	0.00	
8417.00†	89.904	180.177	7442.94	819.09	-816.37	-881.90	40°05'55.521"N	104°53'09.230"W	0.00	
8517.00†	89.904	180.177	7443.11	919.09	-916.37	-882.21	40°05'54.533"N	104°53'09.234"W	0.00	
8617.00†	89.904	180.177	7443.28	1019.09	-1016.37	-882.52	40°05'53.545"N	104°53'09.238"W	0.00	
8717.00†	89.904	180.177	7443.44	1119.09	-1116.37	-882.83	40°05'52.557"N	104°53'09.242"W	0.00	
8817.00†	89.904	180.177	7443.61	1219.09	-1216.37	-883.14	40°05'51.569"N	104°53'09.246"W	0.00	
8917.00†	89.904	180.177	7443.78	1319.09	-1316.37	-883.45	40°05'50.580"N	104°53'09.250"W	0.00	
9017.00†	89.904	180.177	7443.94	1419.09	-1416.37	-883.76	40°05'49.592"N	104°53'09.254"W	0.00	
9117.00†	89.904	180.177	7444.11	1519.09	-1516.36	-884.06	40°05'48.604"N	104°53'09.258"W	0.00	
9217.00†	89.904	180.177	7444.28	1619.09	-1616.36	-884.37	40°05'47.616"N	104°53'09.262"W	0.00	
9317.00†	89.904	180.177	7444.44	1719.09	-1716.36	-884.68	40°05'46.627"N	104°53'09.266"W	0.00	
9417.00†	89.904	180.177	7444.61	1819.09	-1816.36	-884.99	40°05'45.639"N	104°53'09.270"W	0.00	
9517.00†	89.904	180.177	7444.78	1919.09	-1916.36	-885.30	40°05'44.651"N	104°53'09.274"W	0.00	
9617.00†	89.904	180.177	7444.94	2019.09	-2016.36	-885.61	40°05'43.663"N	104°53'09.278"W	0.00	
9717.00†	89.904	180.177	7445.11	2119.09	-2116.36	-885.92	40°05'42.675"N	104°53'09.282"W	0.00	
9817.00†	89.904	180.177	7445.28	2219.09	-2216.36	-886.23	40°05'41.686"N	104°53'09.285"W	0.00	
9917.00†	89.904	180.177	7445.44	2319.09	-2316.36	-886.54	40°05'40.698"N	104°53'09.289"W	0.00	
10017.00†	89.904	180.177	7445.61	2419.09	-2416.36	-886.84	40°05'39.710"N	104°53'09.293"W	0.00	
10117.00†	89.904	180.177	7445.78	2519.09	-2516.36	-887.15	40°05'38.722"N	104°53'09.297"W	0.00	
10217.00†	89.904	180.177	7445.94	2619.09	-2616.36	-887.46	40°05'37.734"N	104°53'09.301"W	0.00	
10317.00†	89.904	180.177	7446.11	2719.09	-2716.36	-887.77	40°05'36.745"N	104°53'09.305"W	0.00	
10417.00†	89.904	180.177	7446.28	2819.09	-2816.36	-888.08	40°05'35.757"N	104°53'09.309"W	0.00	
10517.00†	89.904	180.177	7446.44	2919.09	-2916.36	-888.39	40°05'34.769"N	104°53'09.313"W	0.00	
10617.00†	89.904	180.177	7446.61	3019.09	-3016.36	-888.70	40°05'33.781"N	104°53'09.317"W	0.00	
10717.00†	89.904	180.177	7446.78	3119.09	-3116.35	-889.01	40°05'32.793"N	104°53'09.321"W	0.00	
10817.00†	89.904	180.177	7446.94	3219.09	-3216.35	-889.32	40°05'31.804"N	104°53'09.325"W	0.00	
10917.00†	89.904	180.177	7447.11	3319.09	-3316.35	-889.63	40°05'30.816"N	104°53'09.329"W	0.00	
11017.00†	89.904	180.177	7447.28	3419.09	-3416.35	-889.93	40°05'29.828"N	104°53'09.333"W	0.00	
11117.00†	89.904	180.177	7447.45	3519.09	-3516.35	-890.24	40°05'28.840"N	104°53'09.337"W	0.00	
11217.00†	89.904	180.177	7447.61	3619.09	-3616.35	-890.55	40°05'27.851"N	104°53'09.340"W	0.00	
11317.00†	89.904	180.177	7447.78	3719.09	-3716.35	-890.86	40°05'26.863"N	104°53'09.344"W	0.00	
11417.00†	89.904	180.177	7447.95	3819.09	-3816.35	-891.17	40°05'25.875"N	104°53'09.348"W	0.00	
11517.00†	89.904	180.177	7448.11	3919.09	-3916.35	-891.48	40°05'24.887"N	104°53'09.352"W	0.00	
11617.00†	89.904	180.177	7448.28	4019.08	-4016.35	-891.79	40°05'23.899"N	104°53'09.356"W	0.00	
11717.00†	89.904	180.177	7448.45	4119.08	-4116.35	-892.10	40°05'22.910"N	104°53'09.360"W	0.00	
11817.00†	89.904	180.177	7448.61	4219.08	-4216.35	-892.41	40°05'21.922"N	104°53'09.364"W	0.00	
11917.00†	89.904	180.177	7448.78	4319.08	-4316.35	-892.71	40°05'20.934"N	104°53'09.368"W	0.00	
12017.00†	89.904	180.177	7448.95	4419.08	-4416.35	-893.02	40°05'19.946"N	104°53'09.372"W	0.00	



Planned Wellpath Report

SPURLING 34N-34HZ (PERMIT REV-1) PWP

Page 5 of 6



REFERENCE WELLPATH IDENTIFICATION									
Operator	KERR-MCGEE OIL & GAS ONSHORE LP				Slot	SLOT#06 SPURLING 34N-34HZ (377' FNL & 1028' FWL, SEC.34)			
Area	COLORADO				Well	SPURLING 34N-34HZ			
Field	WELD COUNTY (KERR MCGEE)				Wellbore	SPURLING 34N-34HZ PWB			
Facility	SEC.34-T2N-R67W								

WELLPATH DATA (136 stations)										
MD [ft]	Inclination [°]	Azimuth [°]	TVD [ft]	Vert Sect [ft]	North [ft]	East [ft]	Latitude	Longitude	DLS [°/100ft]	Comments
12049.36	89.904	180.177	7449.00 ¹	4451.45	-4448.71	-893.12	40°05'19.626"N	104°53'09.373"W	0.00	TOTAL DEPTH

HOLE & CASING SECTIONS -									
Ref Wellbore: SPURLING 34N-34HZ PWB					Ref Wellpath: SPURLING 34N-34HZ (PERMIT REV-1) PWP				
String/Diameter	Start MD [ft]	End MD [ft]	Interval [ft]	Start TVD [ft]	End TVD [ft]	Start N/S [ft]	Start E/W [ft]	End N/S [ft]	End E/W [ft]
13.5in Open Hole	17.00	640.00	623.00	17.00	640.00	0.00	0.00	0.00	0.00
9.625in Casing Surface	17.00	640.00	623.00	17.00	640.00	0.00	0.00	0.00	0.00
8.75in Open Hole	640.00	7854.65	7214.65	640.00	7442.00	0.00	0.00	-254.02	-880.16
7in Casing Intermediate	17.00	7854.65	7837.65	17.00	7442.00	0.00	0.00	-254.02	-880.16
6.125in Open Hole	7854.65	12049.36	4194.71	7442.00	7449.00	-254.02	-880.16	-4448.71	-893.12
4.5in Open Hole	17.00	12049.36	12032.36	17.00	7449.00	0.00	0.00	-4448.71	-893.12

TARGETS									
Name	MD [ft]	TVD [ft]	North [ft]	East [ft]	Grid East [US ft]	Grid North [US ft]	Latitude	Longitude	Shape
SEC.34-T2N-R47W HARD LINES (460' SETBACKS)		5030.00	0.41	149.98	3172818.68	1280239.99	40°06'03.593"N	104°52'55.952"W	polygon
SEC.34-T2N-R67W SECTION LINES		5030.00	0.41	149.98	3172818.68	1280239.99	40°06'03.593"N	104°52'55.952"W	polygon
1) SPURLING 34N-34HZ (460' FSL & 150' FWL, SEC.34) REV-1	12049.36	7449.00	-4448.71	-893.12	3171806.62	1275783.91	40°05'19.626"N	104°53'09.373"W	point

SURVEY PROGRAM - Ref Wellbore: SPURLING 34N-34HZ PWB Ref Wellpath: SPURLING 34N-34HZ (PERMIT REV-1) PWP									
Start MD [ft]	End MD [ft]	Positional Uncertainty Model			Log Name/Comment		Wellbore		
17.00	7854.65	NaviTrak (Standard)					SPURLING 34N-34HZ PWB		
7854.65	12049.36	OnTrak (Standard)					SPURLING 34N-34HZ PWB		



Planned Wellpath Report

SPURLING 34N-34HZ (PERMIT REV-1) PWP

Page 6 of 6



REFERENCE WELLPATH IDENTIFICATION			
Operator	KERR-MCGEE OIL & GAS ONSHORE LP	Slot	SLOT#06 SPURLING 34N-34HZ (377' FNL & 1028' FWL, SEC.34)
Area	COLORADO	Well	SPURLING 34N-34HZ
Field	WELD COUNTY (KERR MCGEE)	Wellbore	SPURLING 34N-34HZ PWB
Facility	SEC.34-T2N-R67W		

WELLPATH COMMENTS				
MD [ft]	Inclination [°]	Azimuth [°]	TVD [ft]	Comment
590.00	0.000	289.900	590.00	Fox Hills Base
4746.26	11.000	289.900	4686.00	Sussex
5192.46	11.000	289.900	5124.00	Shannon
6855.61	0.000	180.177	6769.05	4 1/2" LINER TOP
7438.85	48.324	180.177	7297.00	Sharon Springs
7537.61	58.200	180.177	7356.00	Niobrara
7678.99	72.339	180.177	7415.00	Niobrara B