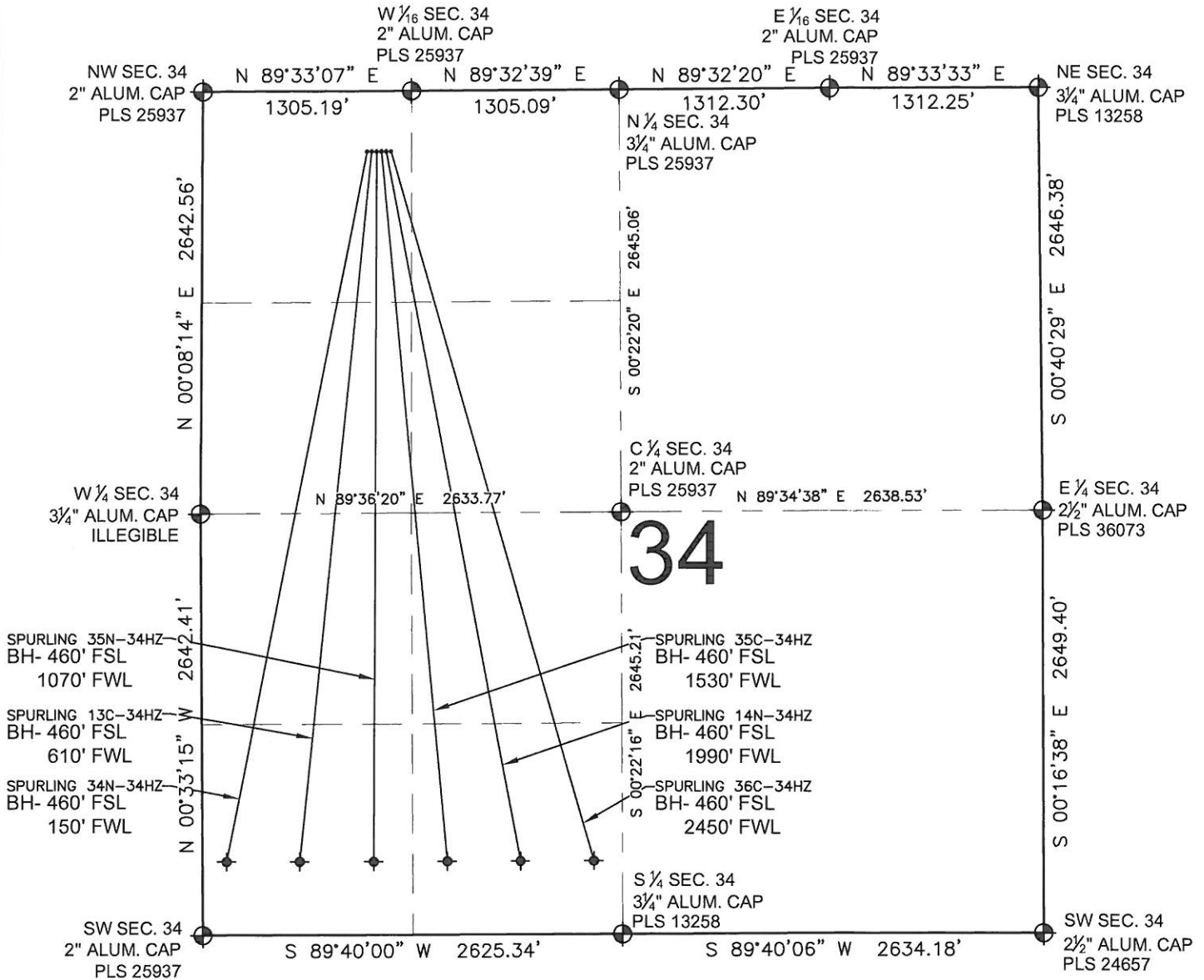


SPURLING 35N-34HZ MULTI-WELL PLAN

SECTION 34, TOWNSHIP 2 NORTH, RANGE 67 WEST, 6TH P.M.



NOTES:

SPURLING 34N-34HZ TO BE AT 377' FNL, 1028' FWL.
BOTTOM HOLE AT 460' FSL & 150' FWL.
SPURLING 13C-34HZ TO BE AT 377' FNL, 1058' FWL.
BOTTOM HOLE AT 460' FSL & 610' FWL.
SPURLING 35N-34HZ TO BE AT 377' FNL, 1088' FWL.
BOTTOM HOLE AT 460' FSL & 1070' FWL.
SPURLING 35C-34HZ TO BE AT 377' FNL, 1118' FWL.
BOTTOM HOLE AT 460' FSL & 1530' FWL.
SPURLING 14N-34HZ TO BE AT 377' FNL, 1148' FWL.
BOTTOM HOLE AT 460' FSL & 1990' FWL.
SPURLING 36C-34HZ TO BE AT 377' FNL, 1178' FWL.
BOTTOM HOLE AT 460' FSL & 2450' FWL.

LEGEND

⊕ = EXISTING MONUMENT ♦ = BOTTOM HOLE BH= BOTTOM HOLE
● = PROPOSED WELL ◆ = EXISTING WELL

PREPARED BY:

PFS



Petroleum Field Services, LLC
1801 W. 13th Ave.
Denver, CO 80204

KERR-MCGEE OIL & GAS ONSHORE LP

FIELD DATE:

04-30-13

DRAWING DATE:

05-07-13

SURFACE LOCATION:

NW 1/4 NW 1/4, SEC. 34, T2N, R67W, 6TH P.M.
WELD COUNTY, COLORADO

