

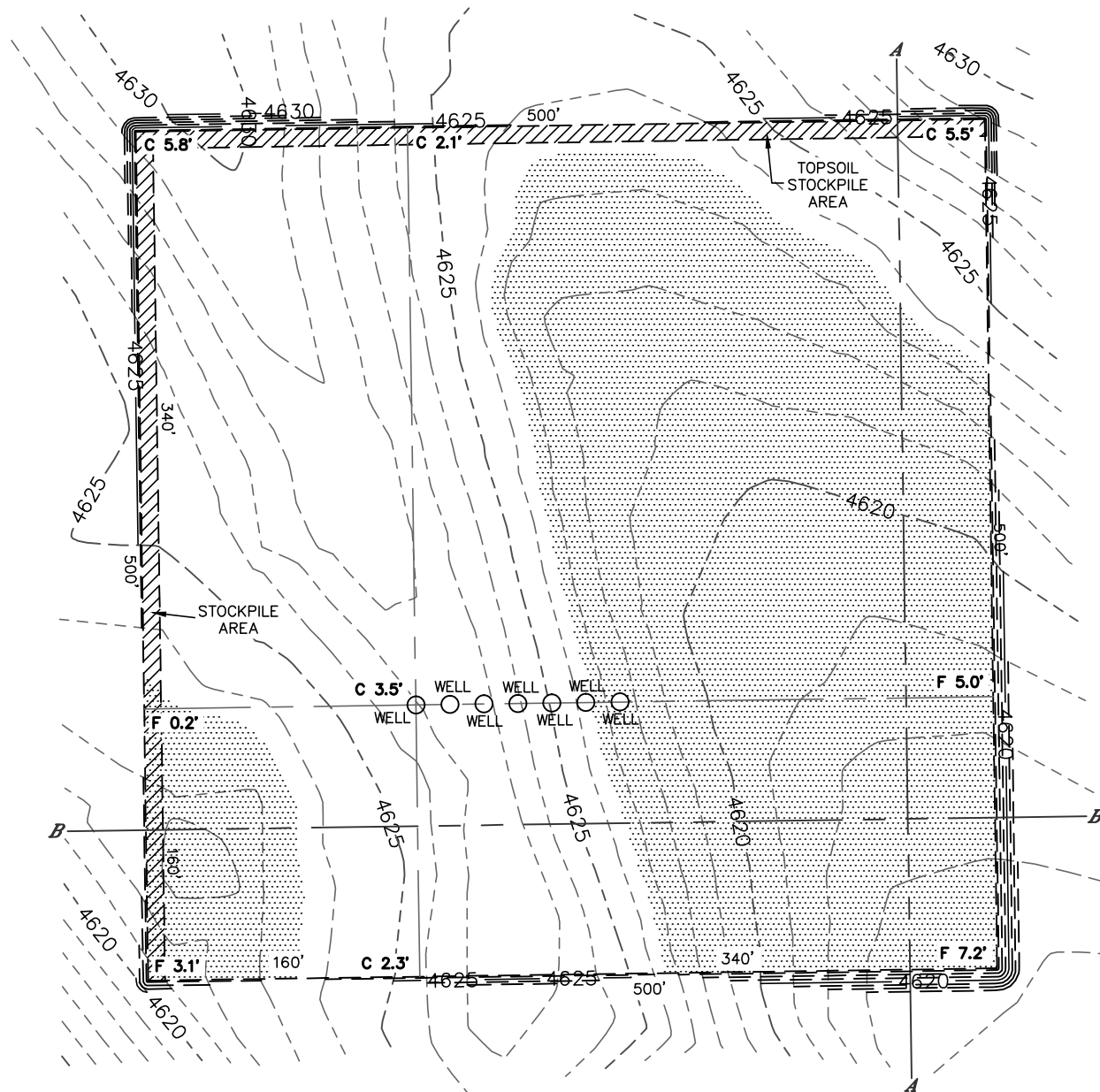


Lat40°, Inc. 1635 Foxtrail Drive, Suite 325 Loveland, CO 970-776-3321

# CUT & FILL DIAGRAM

STATE ANTELOPE 14-2 PAD

SECTION: 2  
TOWNSHIP: 5N  
RANGE: 62W



**OPERATOR: BONANZA CREEK ENERGY, INC.**

**LOCATION: 795' FSL, 892' FWL**

**EXISTING ELEV= 4627.0'**

**PROPOSED ELEV= 4623.5'**

**DISTURBANCE= 6.0 ACRES**

## **ESTIMATED EARTHWORK:**

**TOPSOIL= 9,651 CY**

**CUT= 12,924 CY**

**FILL= 12,914 CY**

**STOCKPILE:**

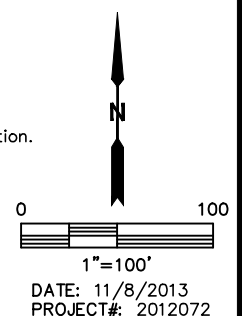
**EXCESS= 10 CY**

### NOTE:

- 1) Ground elevations are based on an observed GPS elevation (NAVD 1988 DATUM).
- 2) No allowance has been made for soil expansion or compaction.
- 3) Proposed elevation does not account for top soil removal.
- 4) Top soil volume assumes 12" depth across entire location.
- 5) Fill slopes 2:1
- 6) Cut slopes 1.5:1

### LEGEND

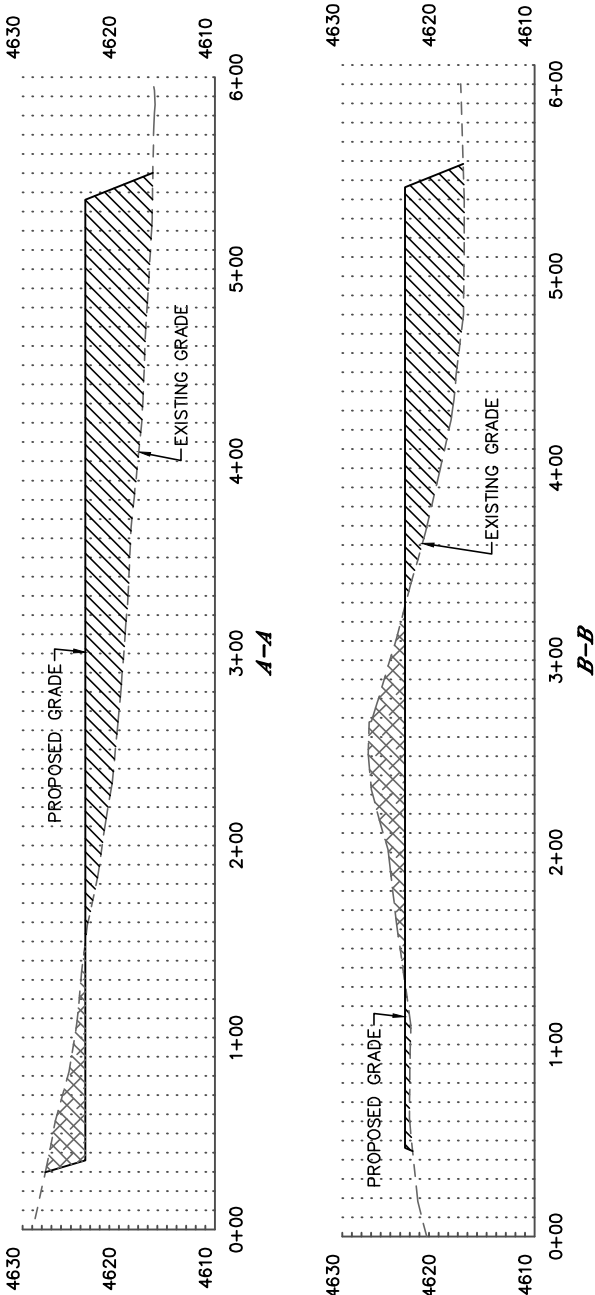
EX. CONTOUR	---
PRO. CONTOUR	---
FILL AREA	





CROSS SECTION DIAGRAM  
STATE ANTELOPE 14-2 PAD

SECTION: 2  
TOWNSHIP: 5N  
RANGE: 62W



HORIZONTAL SCALE: 1"=60', VERTICAL SCALE: 1"=20'