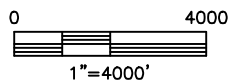




SECTION: 2
TOWNSHIP: 5N
RANGE: 62W



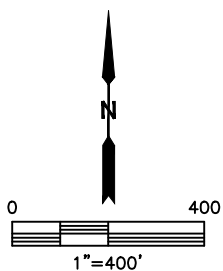
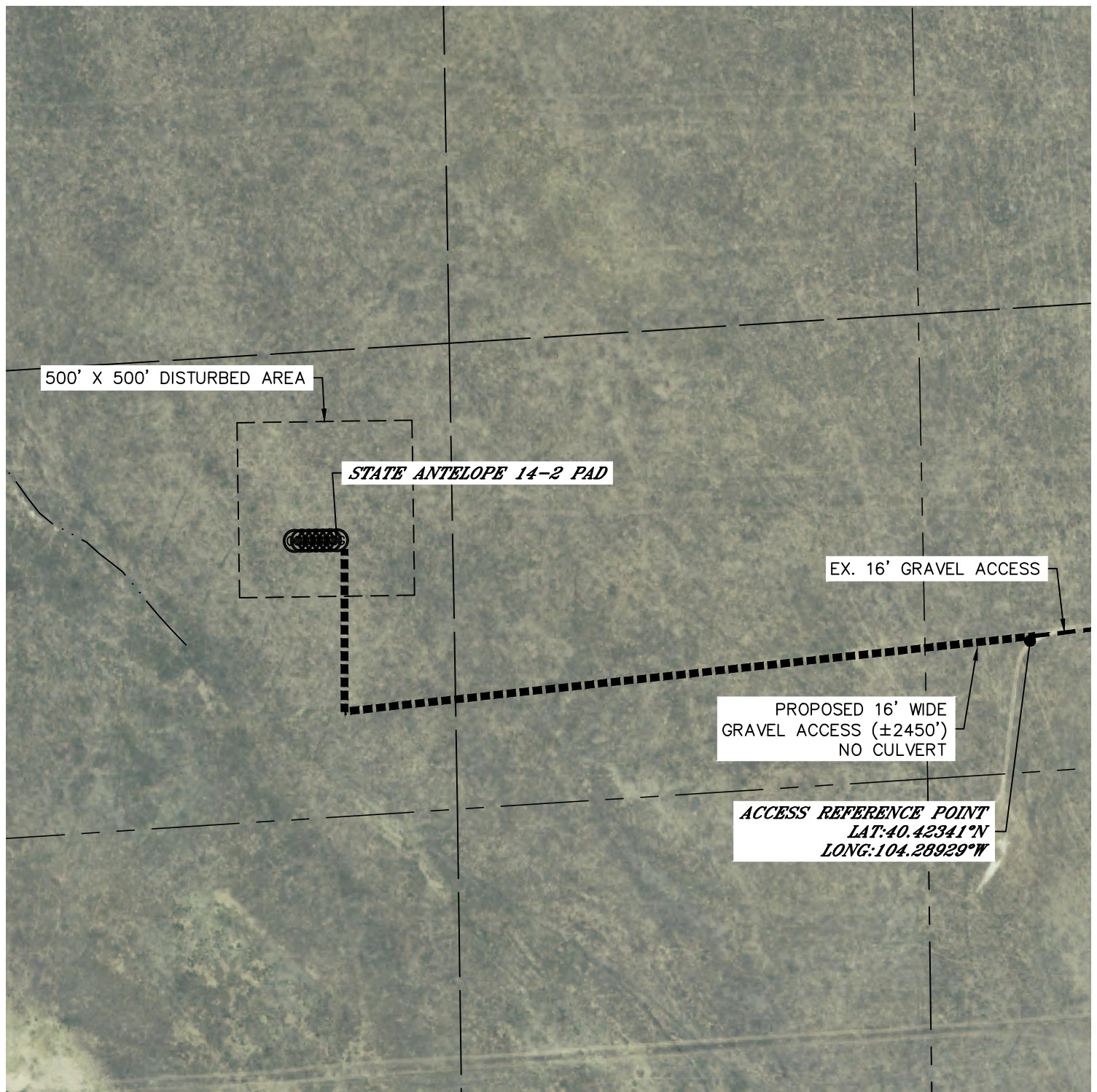


Lat40°, Inc. 1635 Foxtrail Drive, Suite 325 Loveland, CO 970-776-3321

ACCESS ROAD MAP

STATE ANTELOPE 14-2 PAD

SECTION: 2
TOWNSHIP: 5N
RANGE: 62W





Lat40°, Inc. 1635 Foxtrail Drive, Suite 325 Loveland, CO 970-776-3321

ACCESS ROAD MAP

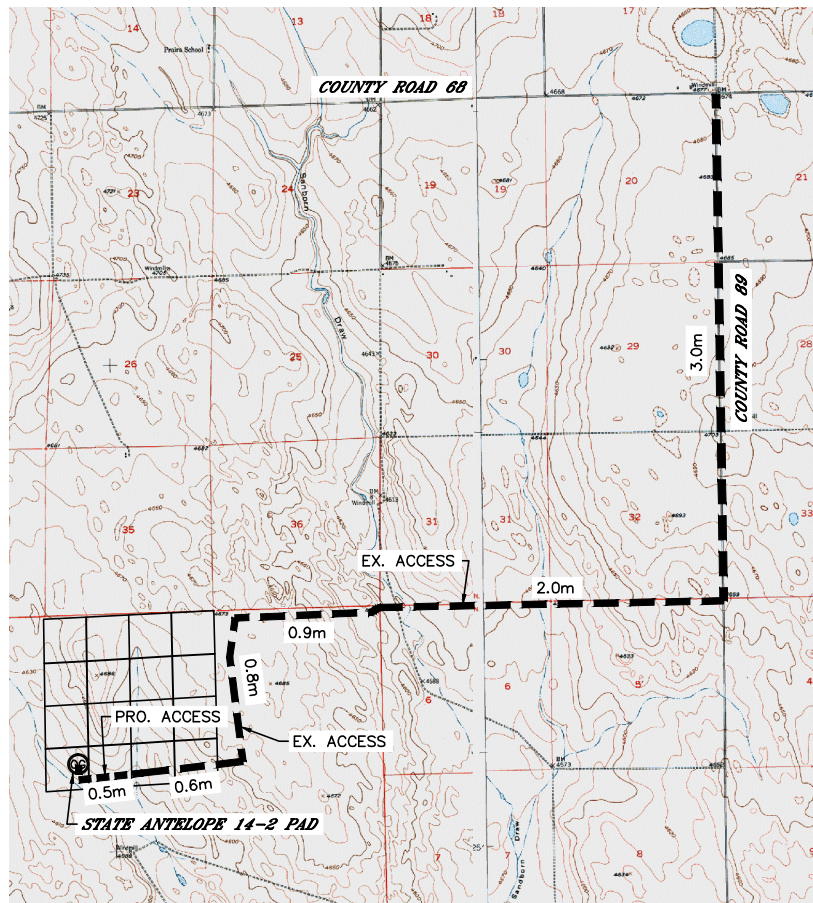
STATE ANTELOPE 14-2 PAD

SECTION: 2
TOWNSHIP: 5N
RANGE: 62W

EXISTING WELLS:
NONE

PROPOSED WELLS:
STATE ANTELOPE 14-44-2HNB
STATE ANTELOPE D14-X44-2HNB
STATE ANTELOPE D-X-2HNB

DRIVING DIRECTIONS TO STATE ANTELOPE 14-2 PAD:
FROM THE INTERSECTION OF WELD COUNTY ROAD 89 AND WELD COUNTY ROAD 68 DRIVE SOUTH ALONG COUNTY ROAD 89 3.0 MILES, TO AN OIL FIELD ACCESS ROAD ON THE WEST SIDE, DRIVE WEST ALONG OIL FIELD ACCESS FOR 2.9 MILES, DRIVE SOUTH ALONG AN OIL FIELD ACCESS 0.8 MILES, DRIVE WEST ALONG AN OIL FIELD ACCESS 0.6 MILES, DRIVE SOUTHWEST AND NORTH ALONG AN OIL FIELD ACCESS (PROPOSED) 0.5 MILES TO THE STATE ANTELOPE 14-2 PAD.



NOT TO SCALE



Lat40°, Inc. 1635 Foxtrail Drive, Suite 325 Loveland, CO 970-776-3321

ACCESS PICTURES

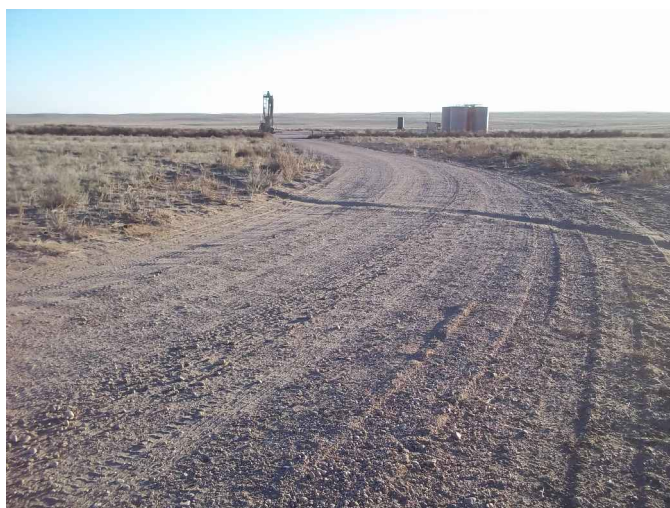
STATE ANTELOPE 14-2 PAD

SECTION: 2
TOWNSHIP: 5N
RANGE: 62W

DATE: 11/12/2013



VIEW EAST



VIEW SOUTH



VIEW WEST