

T7N, R63W, 6th. P.M.

GREAT WESTERN OIL & GAS COMPANY

Well location, SPAUR BROTHERS EH #31-259HC, located as shown in the NE 1/4 SE 1/4 of Section 31, T7N, R63W, 6th P.M., Weld County, Colorado.

BASIS OF ELEVATION

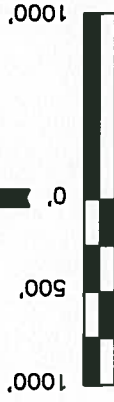
USGS COOPERATIVE BASE NETWORK CONTROL STATION, DESIGNATION 'M414'. NGS DATA SHEET LISTS THE NAVD 88 ELEVATION AS BEING 4600.58 FEET

BASIS OF BEARINGS

BASIS OF BEARINGS IS A G.P.S. OBSERVATION.

LEGEND:

- = 90° SYMBOL
- = PROPOSED WELL HEAD.
- ▲ = SECTION CORNERS LOCATED.
- ◇ = ENTRY POINT
- = TARGET BOTTOM HOLE



SCALE

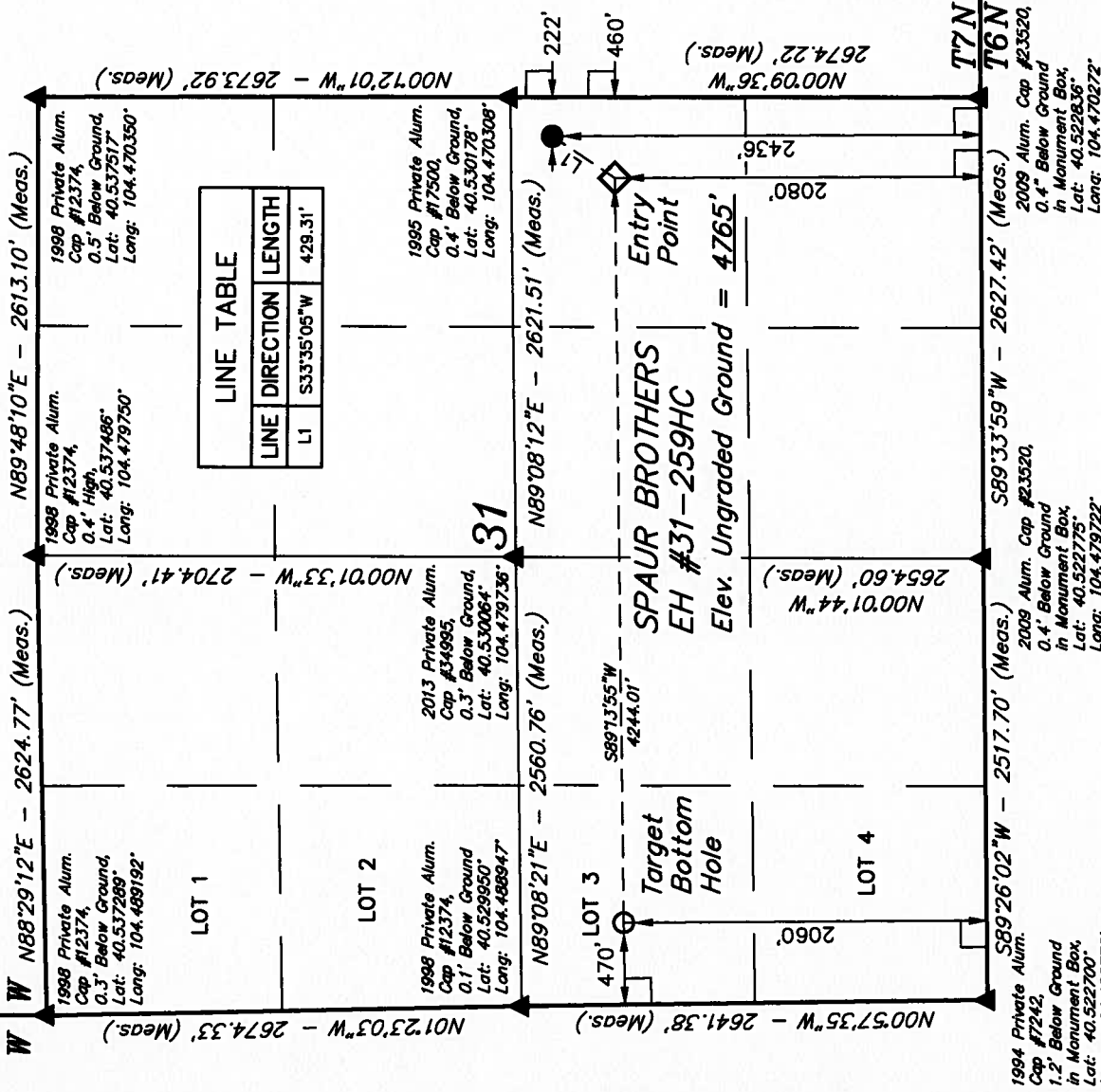
CERTIFICATE
THIS IS TO CERTIFY THAT THE ABOVE PLAT WAS PREPARED FROM FIELD NOTES OF ACTUAL SURVEYS MADE BY ME OR UNDER MY SUPERVISION AND THAT THE SAME ARE TRUE AND CORRECT TO THE BEST OF MY KNOWLEDGE AND BELIEF.

REGISTERED AND SIGNATURE
REGISTRATION NO. 17492
STATE OF COLORADO
09-17-13

REV: 09-14-13 H.K.W.
REV: 06-12-13 J.W.

UNTAH ENGINEERING & LAND SURVEYING
85 SOUTH 200 EAST - VERNAL, UTAH 84078
(435) 789-1017

SCALE 1" = 1000'	DATE SURVEYED: 01-07-13	DATE DRAWN: 01-09-13
PARTY Z.B. D.N. H.K.W.	REFERENCES G.L.O. PLAT	
WEATHER COLD	FILE	
		GREAT WESTERN OIL & GAS COMPANY



LINE TABLE		
LINE	DIRECTION	LENGTH
L1	S33°35'05"W	428.31'

PDOP = 1.6		
NAD 83 (SURFACE LOCATION)		
LATITUDE = 40°31'46.27"	(40.528519)	
LONGITUDE = 104°28'15.97"	(104.471103)	
NAD 27 (SURFACE LOCATION)		
LATITUDE = 40°31'46.33"	(40.528536)	
LONGITUDE = 104°28'14.13"	(104.470592)	
NAD 83 (ENTRY POINT)		
LATITUDE = 40°31'42.73"	(40.528536)	
LONGITUDE = 104°28'19.04"	(104.471956)	
NAD 27 (ENTRY POINT)		
LATITUDE = 40°31'42.80"	(40.528556)	
LONGITUDE = 104°28'17.20"	(104.471444)	
NAD 83 (TARGET BOTTOM HOLE)		
LATITUDE = 40°31'42.13"	(40.528369)	
LONGITUDE = 104°28'13.99"	(104.487219)	
NAD 27 (TARGET BOTTOM HOLE)		
LATITUDE = 40°31'42.19"	(40.528386)	
LONGITUDE = 104°28'12.15"	(104.486708)	