

**GREAT WESTERN OIL & GAS COMPANY**

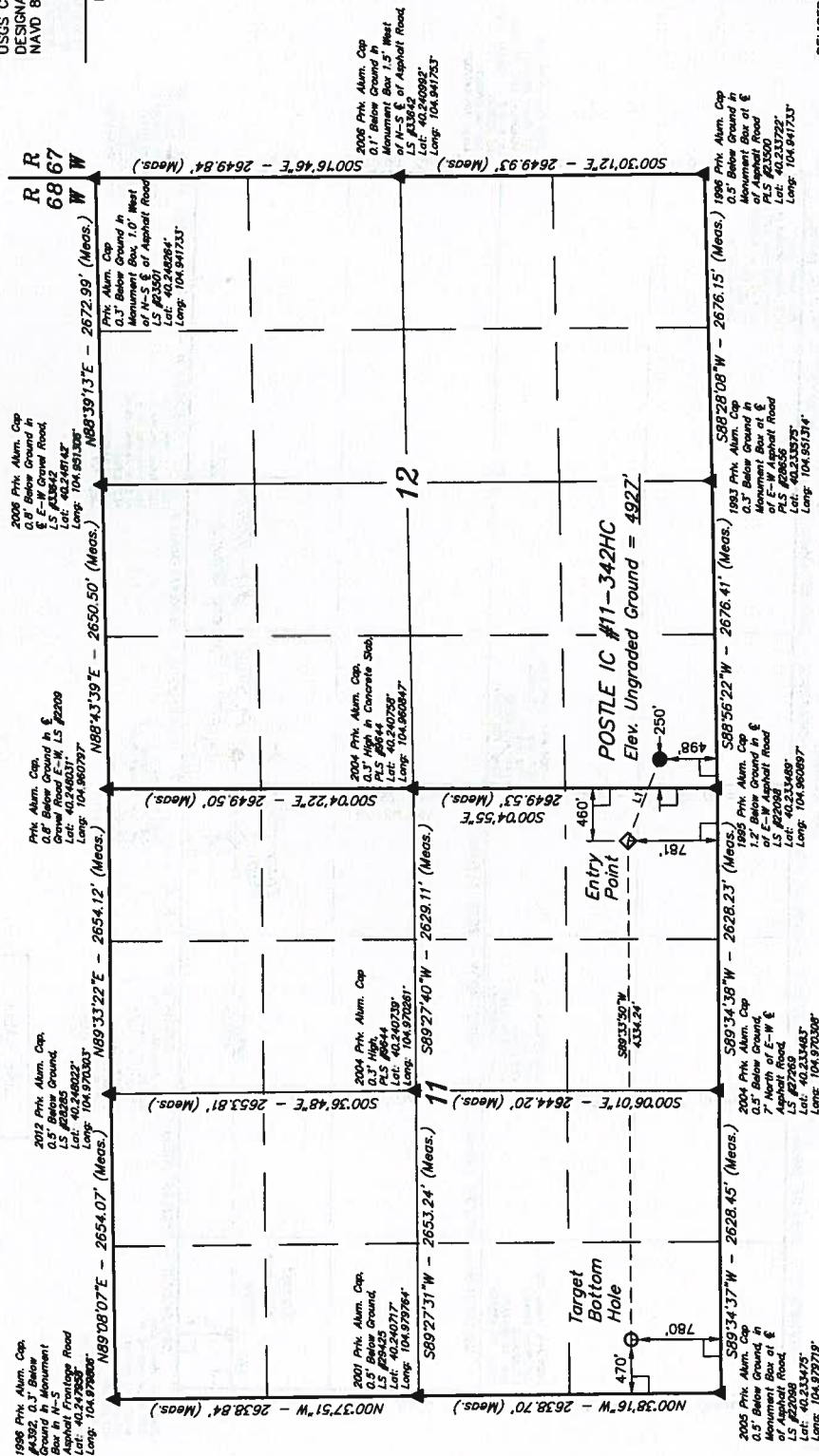
Well location, POSTLE IC #11-342HC, located as shown in the SW 1/4 SW 1/4 of Section 12, T3N, R68W, 6th P.M., Weld County, Colorado.

### BASIS OF ELEVATION

USGS COOPERATIVE BASE NETWORK CONTROL STATION,  
DESIGNATION 'VERMILYEA'. NGS DATA SHEET LISTS THE  
NAVD 88 ELEVATION AS BEING 5026 FEET

## BASIS OF BEARINGS

**BASIS OF BEARINGS IS A G.P.S. OBSERVATION.**



**CERTIFICATE**

THIS IS TO CERTIFY THAT THE ABOVE  
FIELD NOTES OF ACTUAL SURVEYS MADE BY  
SUPERVISION AND THAT THE SAME  
BEST OF MY KNOWLEDGE AND BELIEF

REVISED: 09-12-13 J.W.  
REVISED: 08-15-13 J.W.  
REVISED: 05-28-13 A.D.

# UTAH ENGINEERING & LAND SURVEYING

85 SOUTH 200 EAST - VERNAL, UTAH 84078  
(435) 789-1017

SCALE	1" = 1000'	DATE SURVEYED:	DATE DRAWN:
PARTY		04-19-13	04-24-13
		REFERENCES	
		D.N. C.W. J.W.	G.L.O. PLAT
WEATHER	COOL	FILE	GREAT WESTERN OIL & GAS COMPANY

[illegible]

LINE TABLE		
LINE	DIRECTION	LENGTH
11	N 82° 48' 10" W	761.04'

**LEGEND:**

= 90° SYMBOL

● = PROPOSED WELL HEAD.

▲ = SECTION CORNERS LOCATED.