

GREAT WESTERN OIL & GAS COMPANY

TAILHOLT FD #11-380HN, #11-379HN, #11-378HC,
#11-35HN, #11-374HN, #11-373HC, #11-372HN & #11-371HN

LOCATED IN WELD COUNTY, COLORADO

SECTION 11, T6N, R67W, 6th P.M.

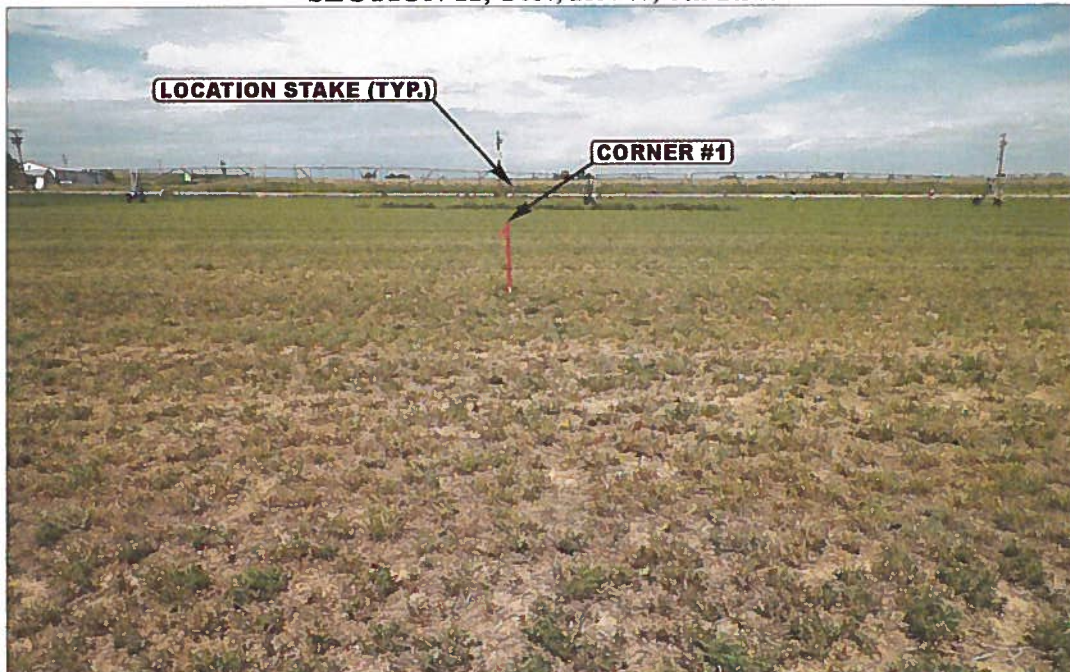


PHOTO: VIEW FROM CORNER #1 TO LOCATION STAKES

CAMERA ANGLE: NORTHERLY



PHOTO: VIEW FROM BEGINNING OF PROPOSED ACCESS

CAMERA ANGLE: SOUTHERLY



UELS

Uintah Engineering & Land Surveying
85 South 200 East Vernal, Utah 84078
(435) 789-1017 * FAX (435) 789-1813

LOCATION PHOTOS

08 **01** **12**
MONTH DAY YEAR

PHOTO
P1

TAKEN BY: D.N. DRAWN BY: A.T. REV: 09-11-13 J.L.G.

GREAT WESTERN OIL & GAS COMPANY

TAILHOLT FD #11-380HN, #11-379HN, #11-378HC,
#11-35HN, #11-374HN, #11-373HC, #11-372HN & #11-371HN

LOCATED IN WELD COUNTY, COLORADO

SECTION 11, T6N, R67W, 6th P.M.



PHOTO: VIEW OF LOCATION STAKES

CAMERA ANGLE: NORTHERLY



PHOTO: VIEW OF LOCATION STAKE

CAMERA ANGLE: EASTERLY



Uintah Engineering & Land Surveying
85 South 200 East Vernal, Utah 84078
(435) 789-1017 * FAX (435) 789-1813

LOCATION PHOTOS

08 01 12
MONTH DAY YEAR

PHOTO

P2

TAKEN BY: D.N.

DRAWN BY: A.T.

REV: 09-11-13 J.L.G.

GREAT WESTERN OIL & GAS COMPANY

TAILHOLT FD #11-380HN, #11-379HN, #11-378HC,
#11-35HN, #11-374HN, #11-373HC, #11-372HN & #11-371HN

LOCATED IN WELD COUNTY, COLORADO

SECTION 11, T6N, R67W, 6th P.M.



PHOTO: VIEW OF LOCATION STAKES

CAMERA ANGLE: SOUTHERLY



PHOTO: VIEW OF LOCATION STAKE

CAMERA ANGLE: WESTERLY



- Since 1964 -



Uintah Engineering & Land Surveying
85 South 200 East Vernal, Utah 84078
(435) 789-1017 * FAX (435) 789-1813

LOCATION PHOTOS

08 01 12
MONTH DAY YEAR

PHOTO
P3

TAKEN BY: D.N.

DRAWN BY: A.T.

REV: 09-11-13 J.L.G.