

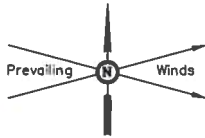
GREAT WESTERN OIL & GAS COMPANY

LOCATION DRAWING FOR

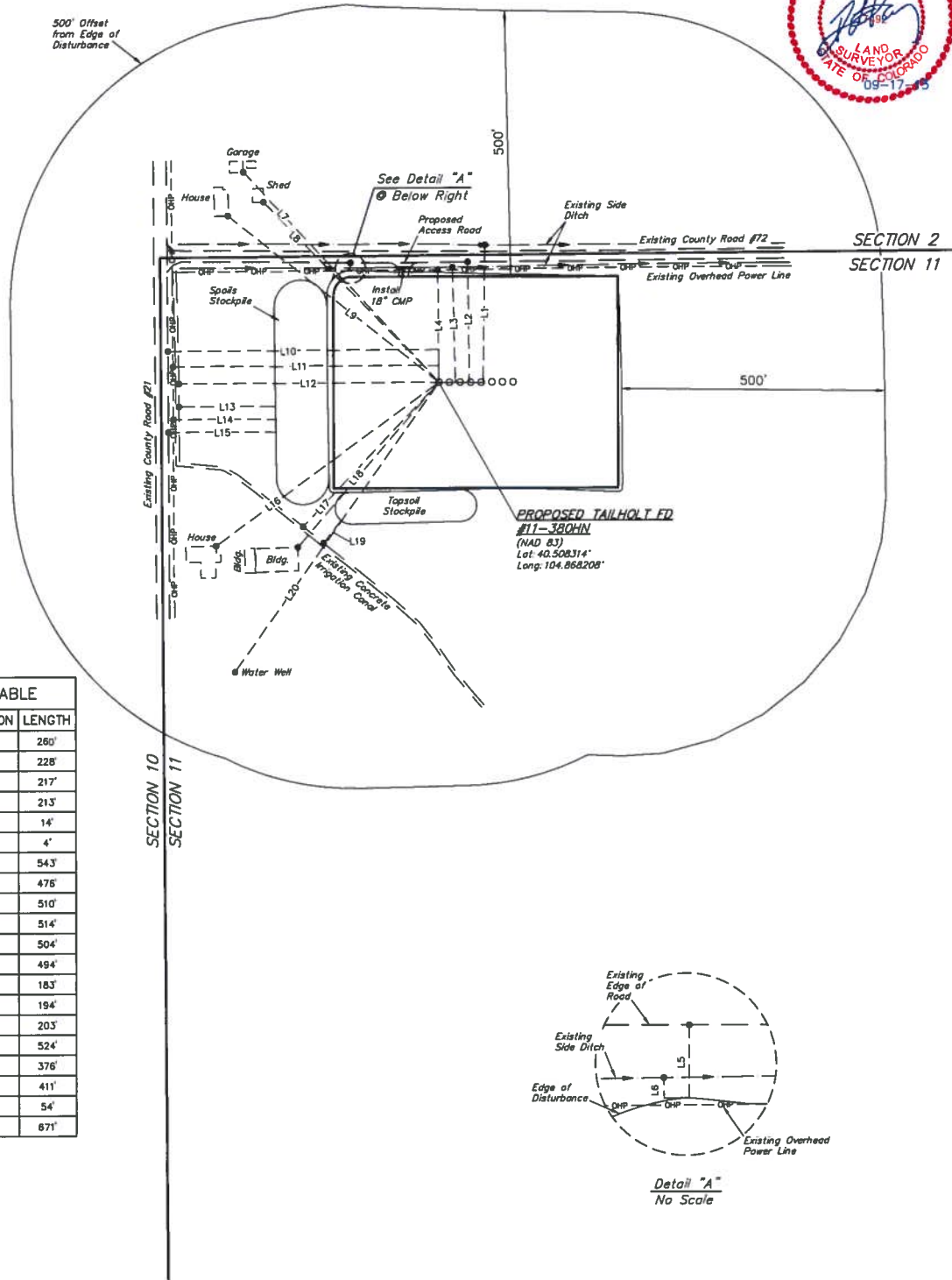
TAILHOLT FD #11-380HN, #11-379HN, #11-378HC,
#11-35HN, #11-374HN, #11-373HC,
#11-372HN & #11-371HN
SECTION 11, T6N, R67W, 6th P.M.
NW 1/4 NW 1/4

FIGURE #5

SCALE: 1" = 50'
DATE: 07-26-12
DRAWN BY: J.W.
REVISED: 10-12-12
REVISED: 03-26-13
REVISED: 05-24-13
REVISED: 07-30-13
REVISED: 09-10-13



500' Offset
from Edge of
Disturbance



LINE TABLE		
LINE	DIRECTION	LENGTH
L1	NORTH	280'
L2	NORTH	228'
L3	NORTH	217'
L4	NORTH	213'
L5	NORTH	14'
L6	NORTH	4'
L7	N43°W	543'
L8	N44°W	476'
L9	N52°W	510'
L10	WEST	514'
L11	WEST	504'
L12	WEST	494'
L13	WEST	183'
L14	WEST	194'
L15	WEST	203'
L16	S54°W	524'
L17	S43°W	376'
L18	S41°W	411'
L19	S38°W	54'
L20	S35°W	671'

