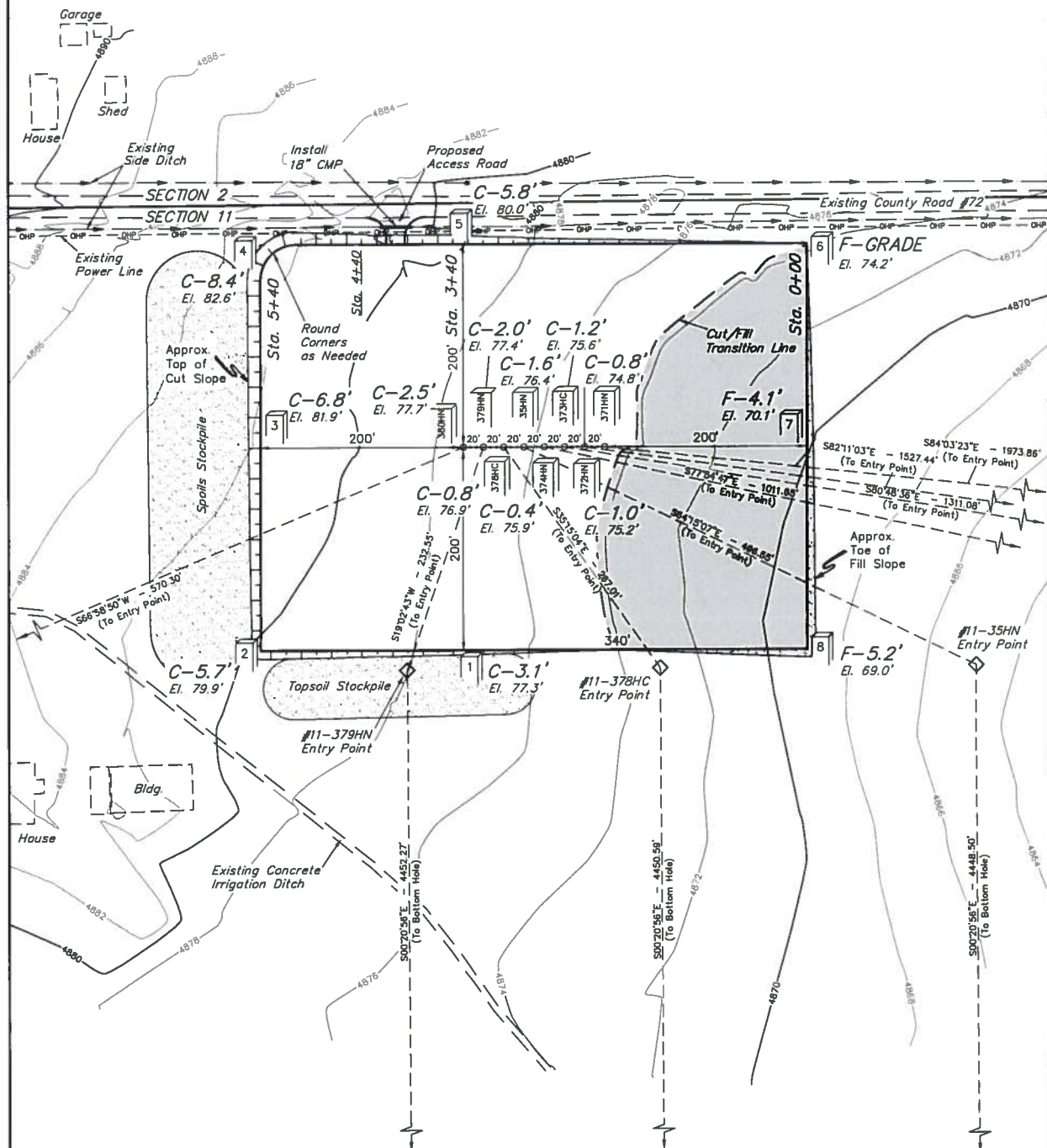


GREAT WESTERN OIL & GAS COMPANY
CONSTRUCTION LAYOUT FOR
 TAILHOLT FD #11-380HN, #11-379HN, #11-378HC,
 #11-35HN, #11-374HN, #11-373HC,
 #11-372HN & #11-371HN
 SECTION 11, T6N, R67W, 6th P.M.
 NW 1/4 NW 1/4

FIGURE #1

SCALE: 1" = 100'
 DATE: 07-26-12
 DRAWN BY: J.W.
 REVISED: 09-06-12
 REVISED: 10-12-12
 REVISED: 03-26-13
 REVISED: 05-24-13
 REVISED: 09-10-13



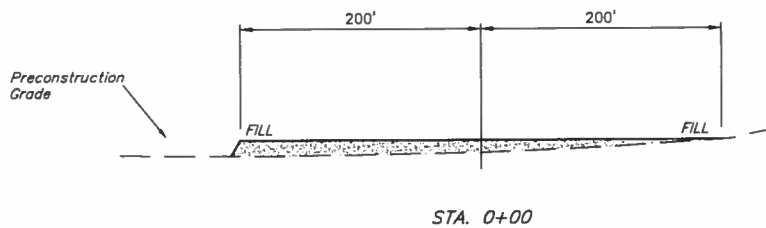
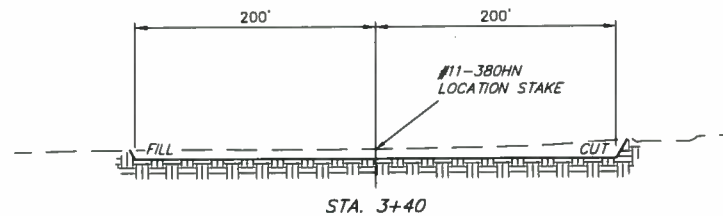
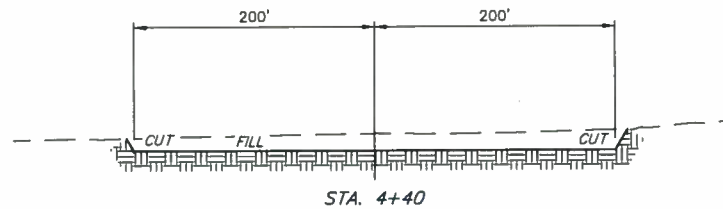
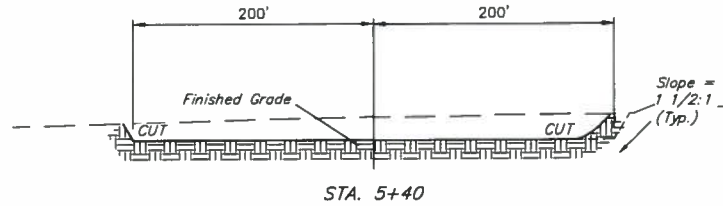
Elev. Ungraded Ground At #11-380HN Loc. Stake = 4877.7'
 FINISHED GRADE ELEV. AT #11-380HN LOC. STAKE = 4874.2'

UINTAH ENGINEERING & LAND SURVEYING
 85 So. 200 East • Vernal, Utah 84078 • (435) 788-1017

1" = 40'
X-Section
Scale
1" = 100'
DATE: 07-26-12
DRAWN BY: J.W.
REVISED: 09-06-12
REVISED: 10-12-12
REVISED: 03-26-13
REVISED: 05-24-13
REVISED: 09-10-13

GREAT WESTERN OIL & GAS COMPANY
CONSTRUCTION LAYOUT CROSS SECTIONS FOR
TAILHOLT FD #11-380HN, #11-379HN, #11-378HC,
#11-35HN, #11-374HN, #11-373HC,
#11-372HN & #11-371HN
SECTION 11, T6N, R67W, 6th P.M.
NW 1/4 NW 1/4

FIGURE #2



NOTE:
Topsoil should not be
Stripped Below Finished
Grade on Substructure Area.

* NOTE:
FILL QUANTITY INCLUDES
5% FOR COMPACTION

APPROXIMATE YARDAGES

(6") Topsoil Stripping = 4,230 Cu. Yds.
Remaining Location = 19,310 Cu. Yds.
TOTAL CUT = 23,540 CU. YDS.
FILL = 6,880 CU. YDS.

EXCESS MATERIAL = 16,660 Cu. Yds.
Topsoil = 4,230 Cu. Yds.
EXCESS UNBALANCE = 12,430 Cu. Yds.
(After Interim Rehabilitation)

APPROXIMATE ACREAGES
WELL SITE DISTURBANCE = ± 6.518 ACRES
ACCESS ROAD DISTURBANCE = ± 0.019 ACRES
TOTAL = ± 6.537 ACRES

UINTAH ENGINEERING & LAND SURVEYING
85 So. 200 East • Vernal, Utah 84078 • (435) 789-1017