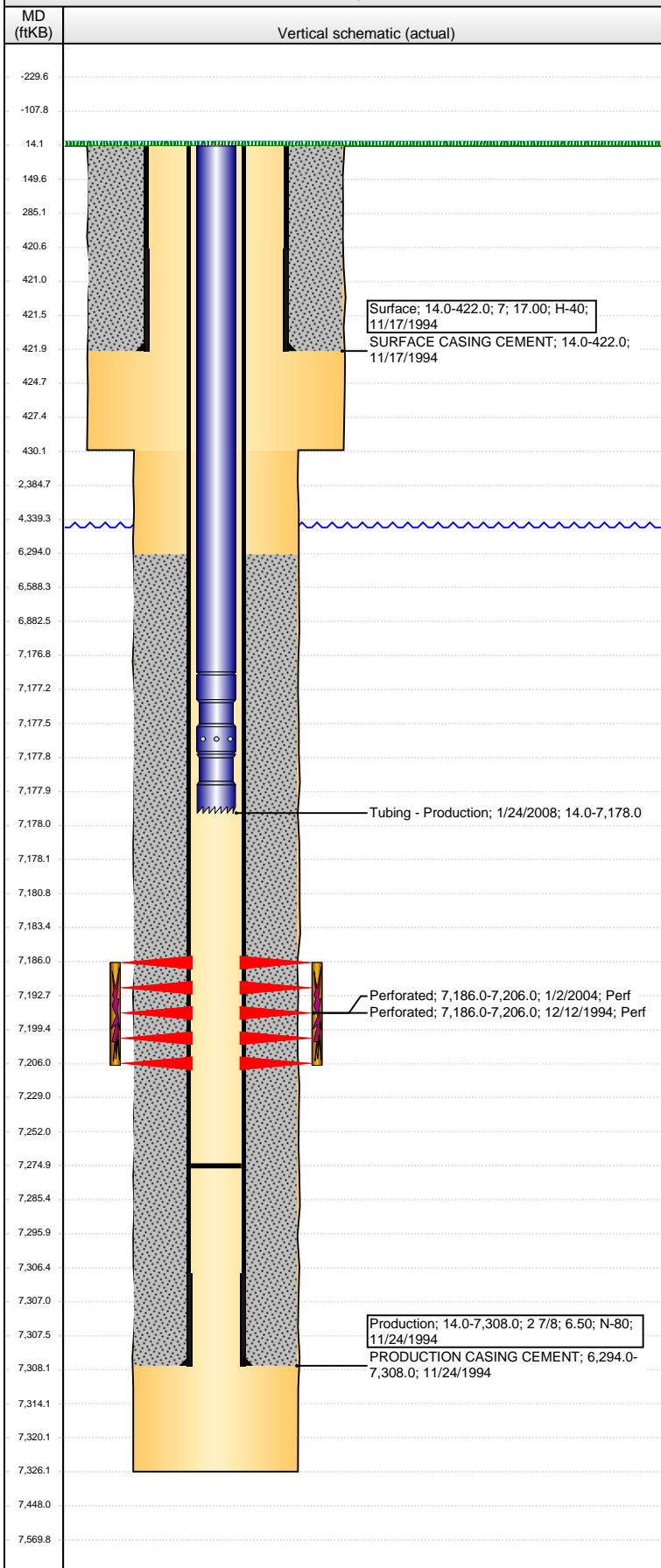


**Well Name: HAYTHORN 07-05G5**

VERTICAL - ORIGINAL HOLE, 11/25/2013 9:27:01 AM



## Well Header

API 05-123-18114	Business Unit WATTENBERG	District 15	Well Config VERTICAL
Original KB Elevation (ft) 4,810.00	KB - GL / MSL (ftKB) 14.00	Spud Date 11/17/1994	P & A Date
Comment			

## Directions To Well

RD 70 & RD 37 - N.5 - E.1 - N INTO

## Congressional Location

Quarter 1	Quarter 2	Quarter 3	Quarter 4	Section	Township	Twnshp N...	Range	Rng E/W Dir
		SW	NW	7	6	N	65	W

## Bottom Hole Location

North-South Distance (ft)	From N or S Line	East-West Distance (ft)	From E or W Line

## Plug Back Total Depths

Date	Depth (ftKB)	Method	Com
11/24/1994	7,275.0	TAG	

## Wellbore Sections

Section Des	Size (in)	Act Top, MD (ftKB)	Act Btm, MD (ftKB)
SURFACE	12 1/4	14.0	430.0
PRODUCTION	7 7/8	430.0	7,326.0

## Zone Statuses

Zone Name	Status Date	Status	Job
CODELL	1/13/1995	PR	DRILLING/COMPLETION - ORIGINAL, 11/17/1994 00:00
CODELL	1/13/2004	PR	RE-FRAC, 12/30/2003 00:00

## Casing Strings

### Surface, 422.0ftKB

Casing Description	Run Date	OD (in)	Wt/Len (l...	Grade	Top, MD (ft...	MD (ftKB)
Surface	11/17/1994	7	17.00	H-40	14.0	422.0

### Production, 7,308.0ftKB

Casing Description	Run Date	OD (in)	Wt/Len (l...	Grade	Top, MD (ft...	MD (ftKB)
Production	11/24/1994	2 7/8	6.50	N-80	14.0	7,308.0

## Cement

Description	Top Depth (ftKB)	Bottom Depth (ftKB)
SURFACE CASING CEMENT	14.0	422.0
PRODUCTION CASING CEMENT	6,294.0	7,308.0

## Tubing Components

Item Des	OD (in)	Wt (lb/ft)	Grade	Jts	Len (ft)	Btm (ftKB)	Btm (TVD) (ftKB)
Tubing	1.9	2.76	J-55	225	7,163.00	7,177.0	
Seal Nipple	1.9			1	0.80	7,177.8	
Notched collar	1.9			1	0.20	7,178.0	

## Perforation Data

Zone	Bnch/St g	Entered Shot Total	Top (ftKB)	Btm (ftKB)	Date
CODELL, ORIGINAL HOLE		40	7,186.00	7,206.00	12/12/1994
CODELL, ORIGINAL HOLE		80	7,186.00	7,206.00	1/2/2004

## Stimulations & Treatments

Date	Zone	Primary Job Type
12/15/1994	CODELL, ORIGINAL HOLE	DRILLING/COMPLETION - ORIGINAL
Technical Result		
Tech Result Details		
Tech Result Note		
Comment		

Date	Zone	Primary Job Type
1/6/2004	CODELL, ORIGINAL HOLE	RE-FRAC
Technical Result		
Tech Result Details		
Tech Result Note		
Comment		

## Other In Hole

Run Date	Des	OD (in)	Top (ftKB)	Btm (ftKB)

## Logs

Date	Type	Top, MD (ftKB)	Btm, MD (ftKB)
11/25/1994	Induction	422.0	7,320.0
12/9/1994	Cement Bond	6,150.0	7,197.0