



WELLS RANCH USX AA27-69-1HN

TVD
1"=100'

Company: NOBLE ENERGY

Well Name: WELLS RANCH USX AA27-69-1HN

UWI or LSD: 051-233-7138

Rig Id: H&P 277

State: CO

County/Parish: WELD COUNTY

Country: USA

Survey Company: DRILTECH, LLC

Job number: 2013-268-IDDT-CO

MARK LARUE MWD OPERATOR

JOSH CAYLOR MWD OPERATOR

Log measurements: Gamma, ROP, Temp
Depth measured from: 910
Maximum temperature: 220.3

Depth Start: 910 ft
End: 11447 ft
Date: 8/27/2013
9/3/2013

Casing Depth Size
Surface: 598 9.625
Intermediate: 7134 7

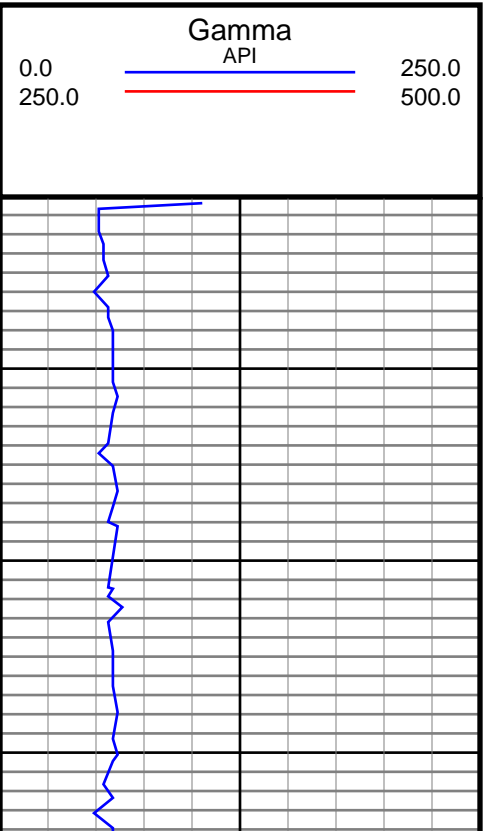
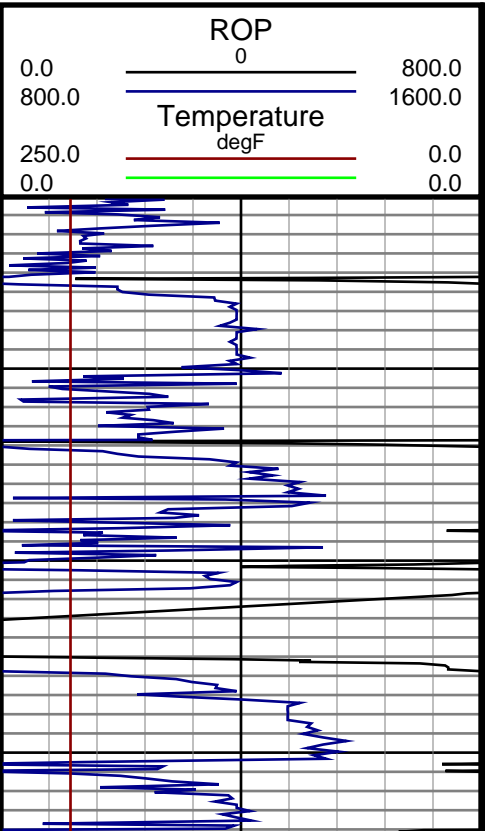
Mud Type: WATER BASE
Density: 8.75
Viscosity: 28
Rm: Rmf: Rmc:

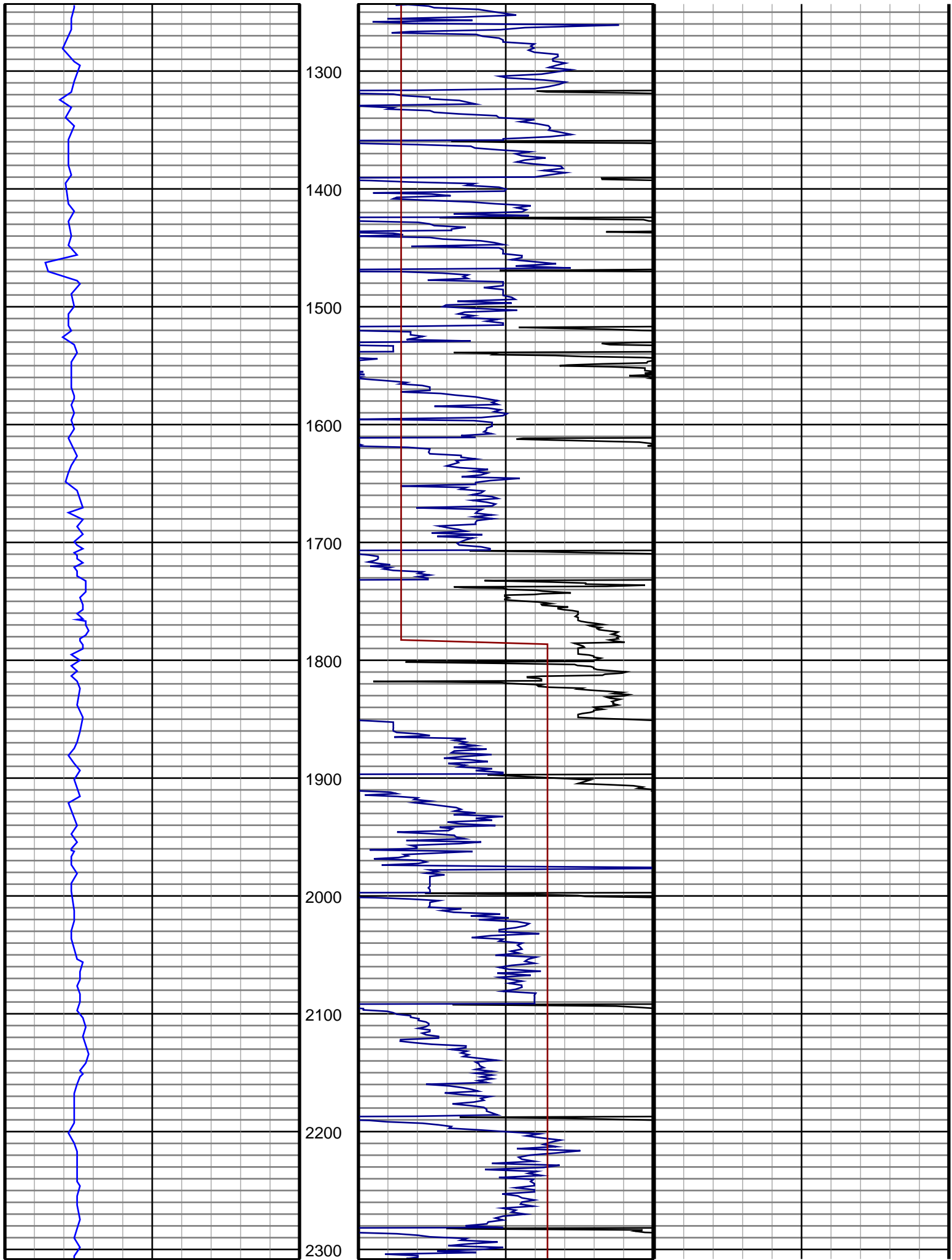
Elevations
KB:
GL:
DF:

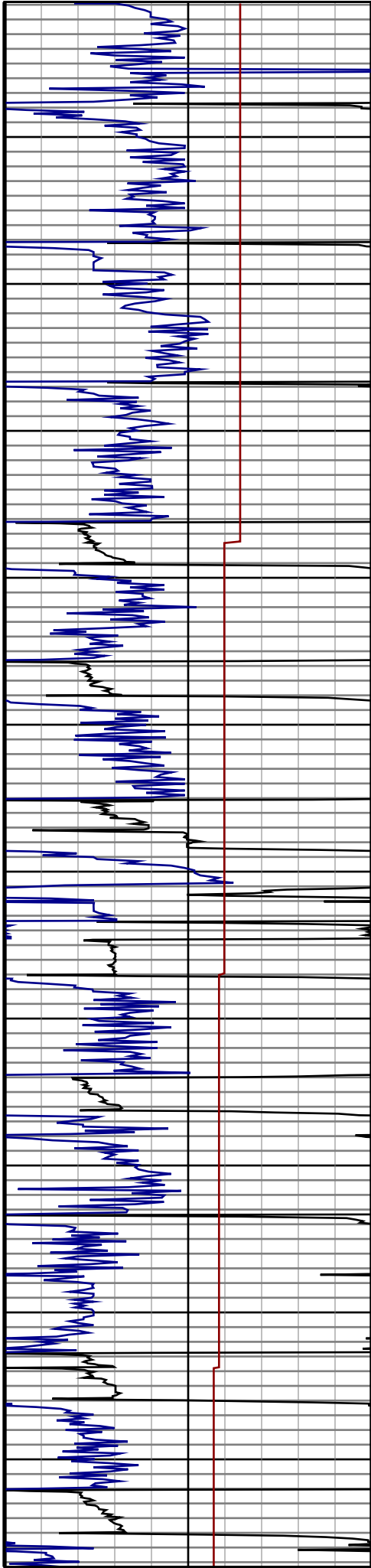
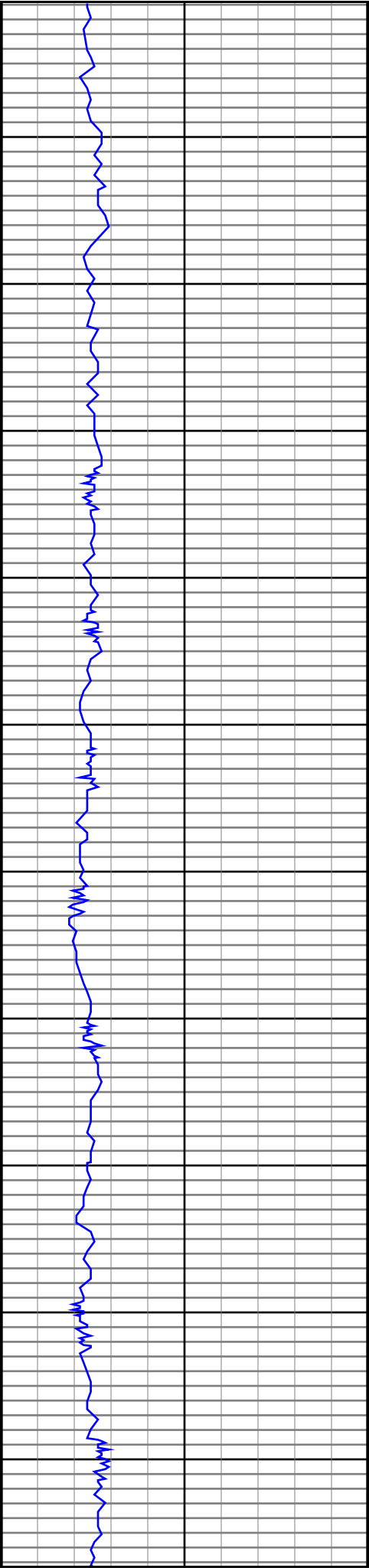
Run	Bit Size	Gamma	Offsets	Survey	Start	End	Start	End	Dates
1	8 3/4	36.00	53.00	608	5897	7145	8/27/13	8/28/13	
2	8 3/4	45.00	62.00	5897	7145	8/28/13	8/28/13	8/30/13	
3	6 1/8	50.00	67.00	7145	9383	8/31/13	8/31/13	9/1/13	
4	6 1/8	50.00	67.00	9383	10525	9/1/13	9/1/13	9/2/13	
5	6 1/8	50.00	67.00	10525	11447	9/2/13	9/2/13	9/3/13	
6									
7									
8									
9									
10									

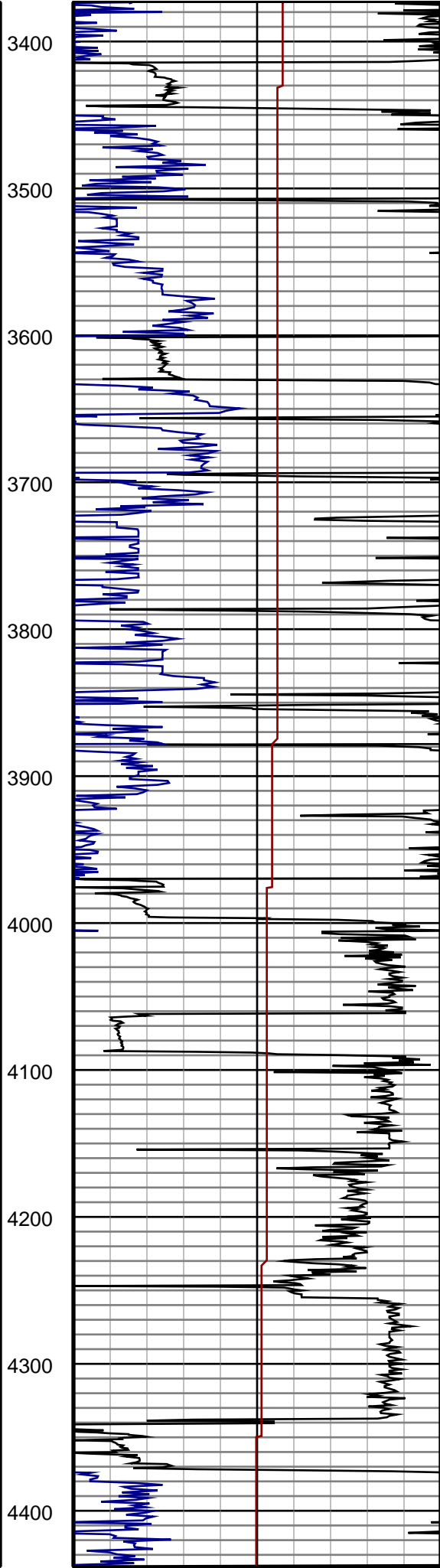
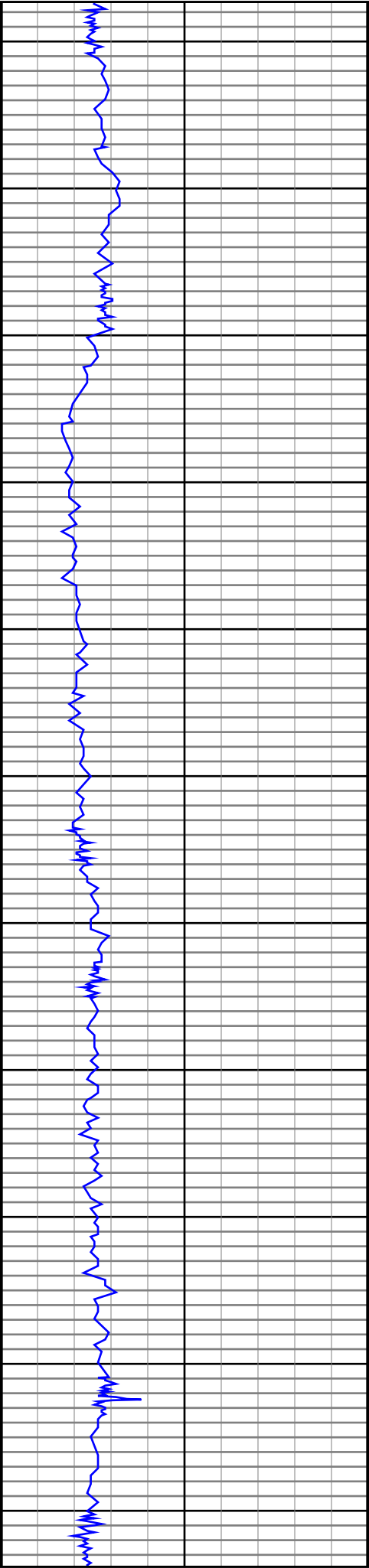
DRILTECH, LLC uses its best efforts to provide its customers with accurate information and interpretations in conjunction with services performed but will not be held liable or responsible for the accuracy of such information or interpretation.

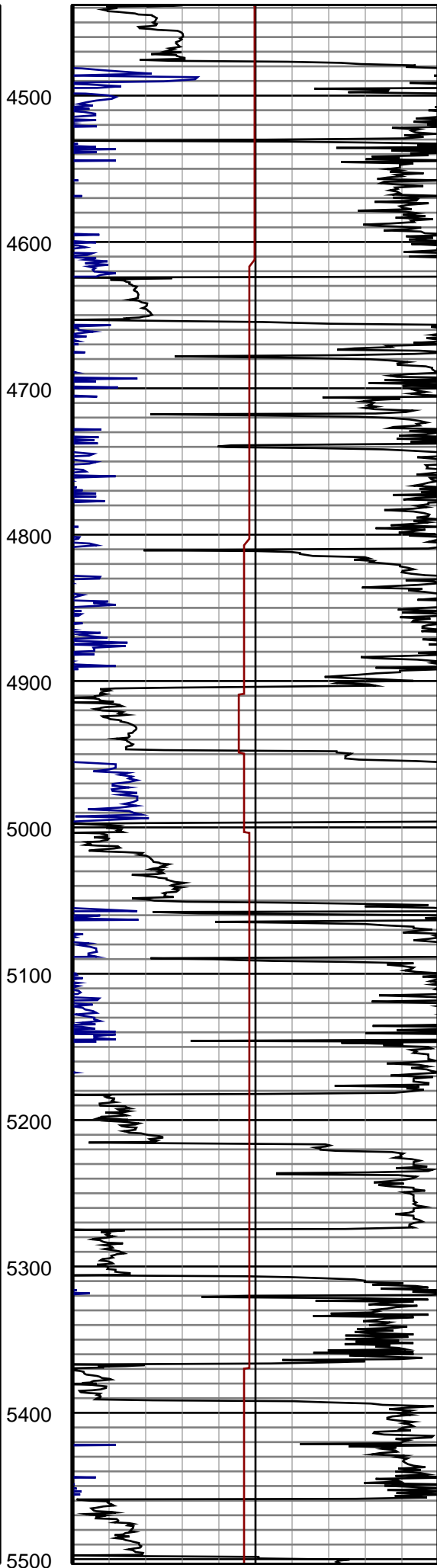
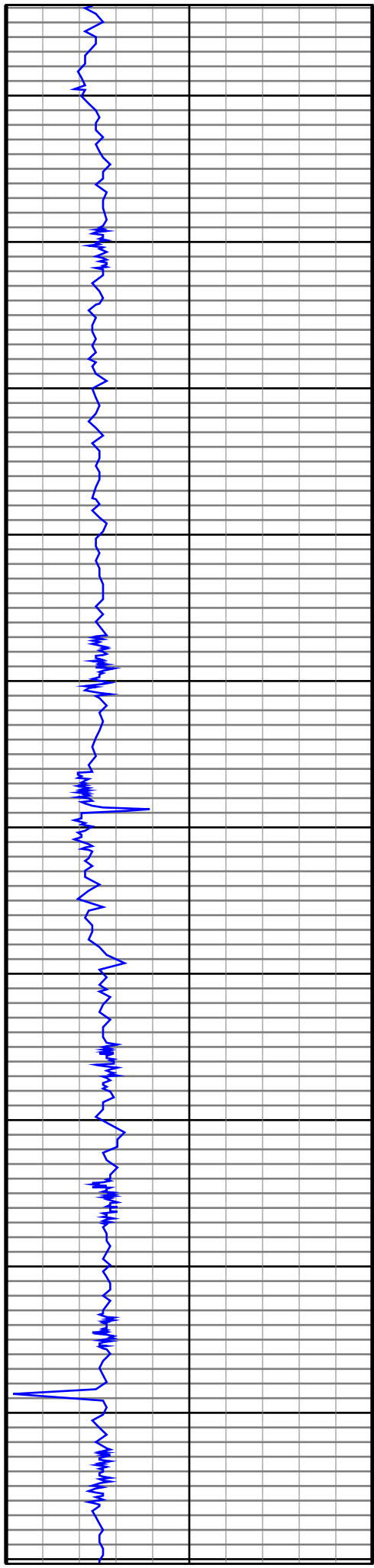
TVD

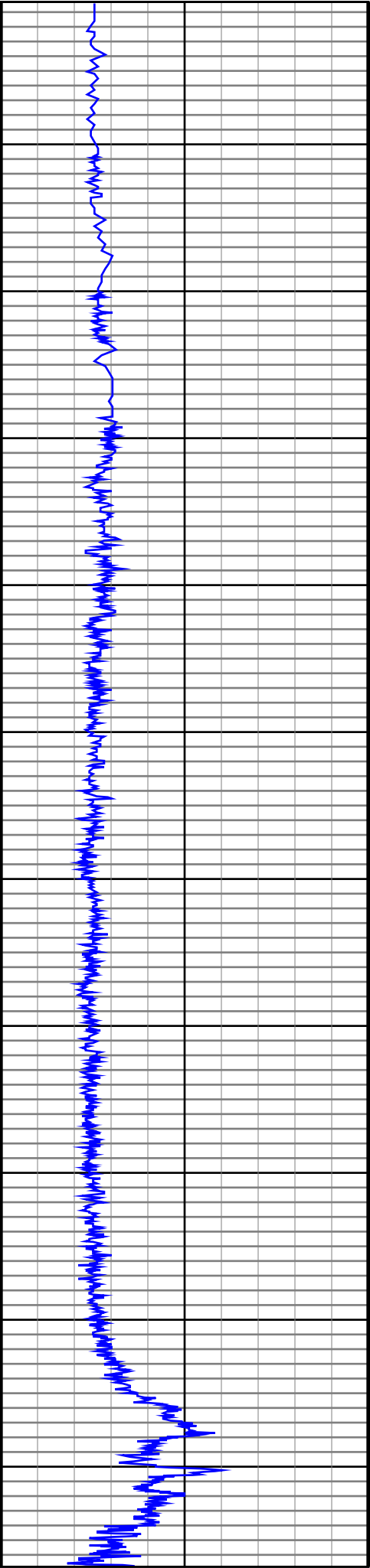




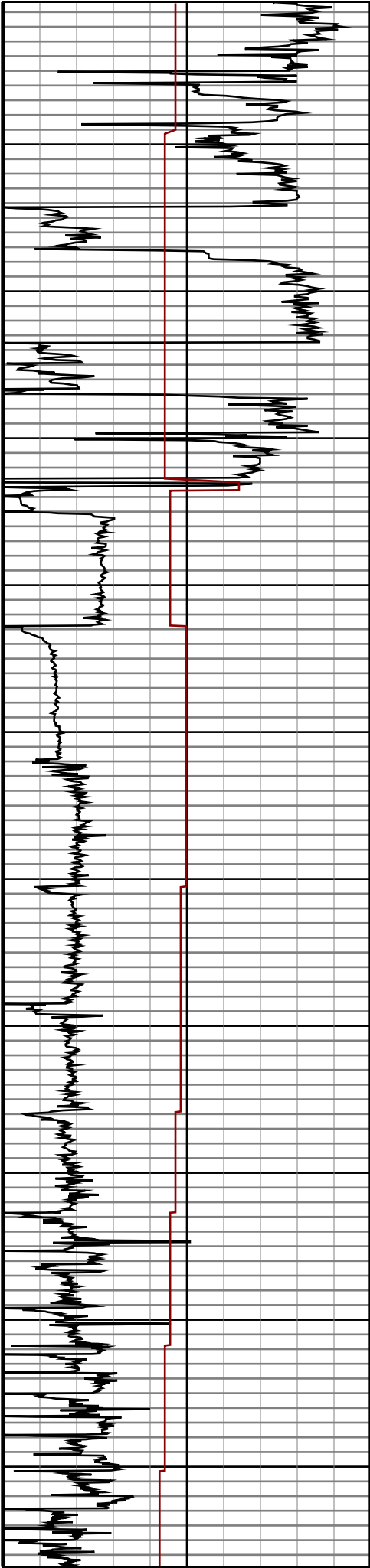


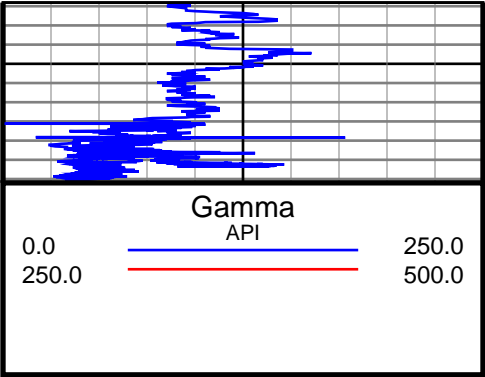






5600
5700
5800
5900
6000
6100
6200
6300
6400
6500





6600

