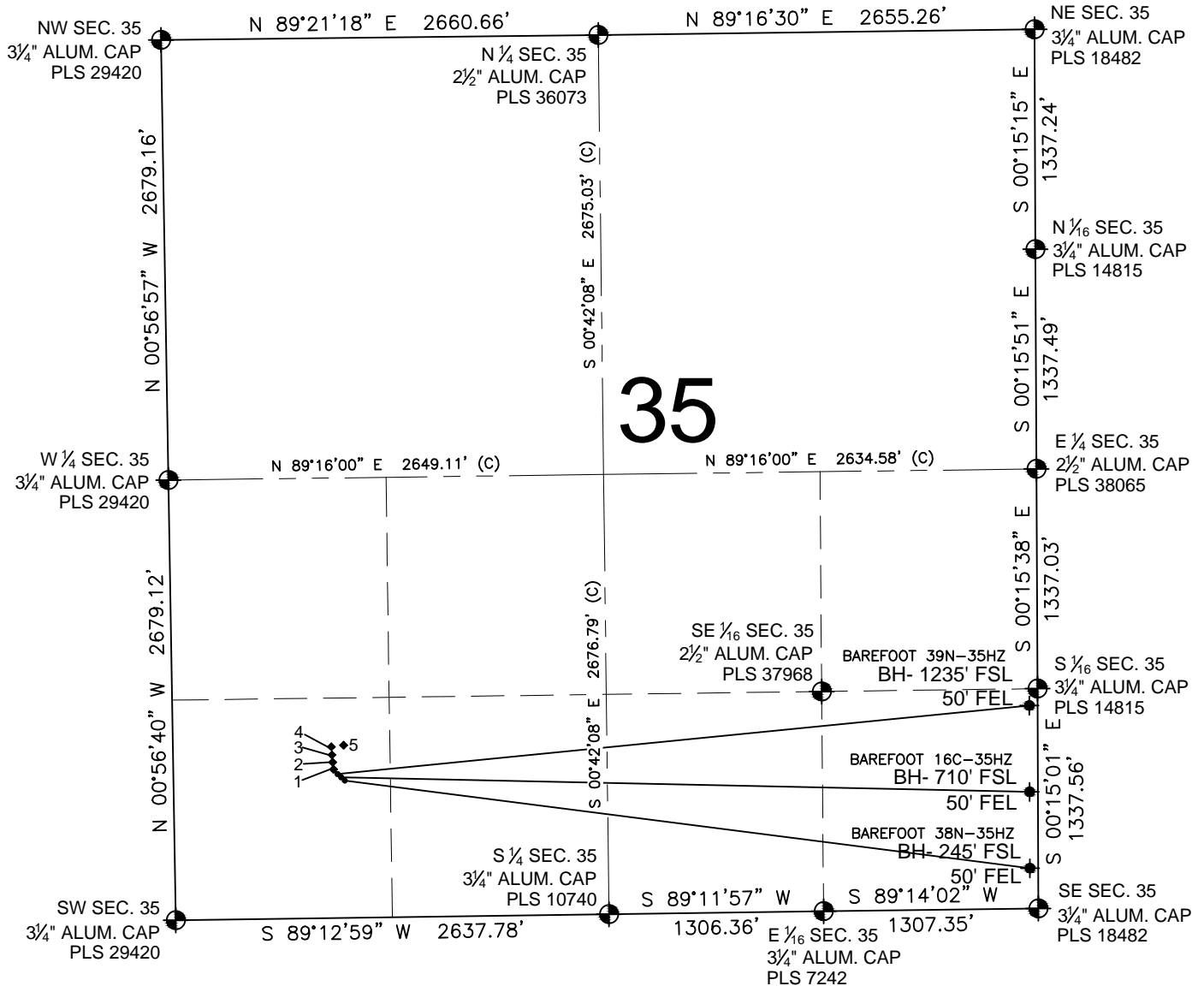


BAREFOOT 39N-35HZ MULTI-WELL PLAN

SECTION 35, TOWNSHIP 3 NORTH, RANGE 68 WEST, 6TH P.M.



LEGEND

- = EXISTING MONUMENT
- = PROPOSED WELL
- ◆ = BOTTOM HOLE
- ◆ = EXISTING WELL
- BH = BOTTOM HOLE

NOTES:

- BAREFOOT 39N-35HZ TO BE AT 877' FSL, 1000' FWL.
- BOTTOM HOLE AT 1235' FSL & 50' FEL.
- BAREFOOT 16C-35HZ TO BE AT 856' FSL, 1022' FWL.
- BOTTOM HOLE AT 710' FSL & 50' FEL.
- BAREFOOT 38N-35HZ TO BE AT 836' FSL, 1043' FWL.
- BOTTOM HOLE AT 245' FSL & 50' FEL.
- 1) CARMA 35-35 IS 897' FSL, 978' FWL.
- 2) CARMA 14-35 IS 927' FSL, 973' FWL.
- 3) CARMA 23-35 IS 957' FSL, 970' FWL.
- 4) CARMA 34-35 IS 986' FSL, 966' FWL.
- 5) CARL H ADLER 1 IS 995' FSL, 1041' FWL.

PREPARED BY:



KERR-MCGEE OIL & GAS ONSHORE LP

FIELD DATE:

07-29-13

DRAWING DATE:

08-21-13

SURFACE LOCATION:

SW 1/4, SW 1/4, SEC. 35, T3N, R68W, 6TH P.M.
WELD COUNTY, COLORADO

