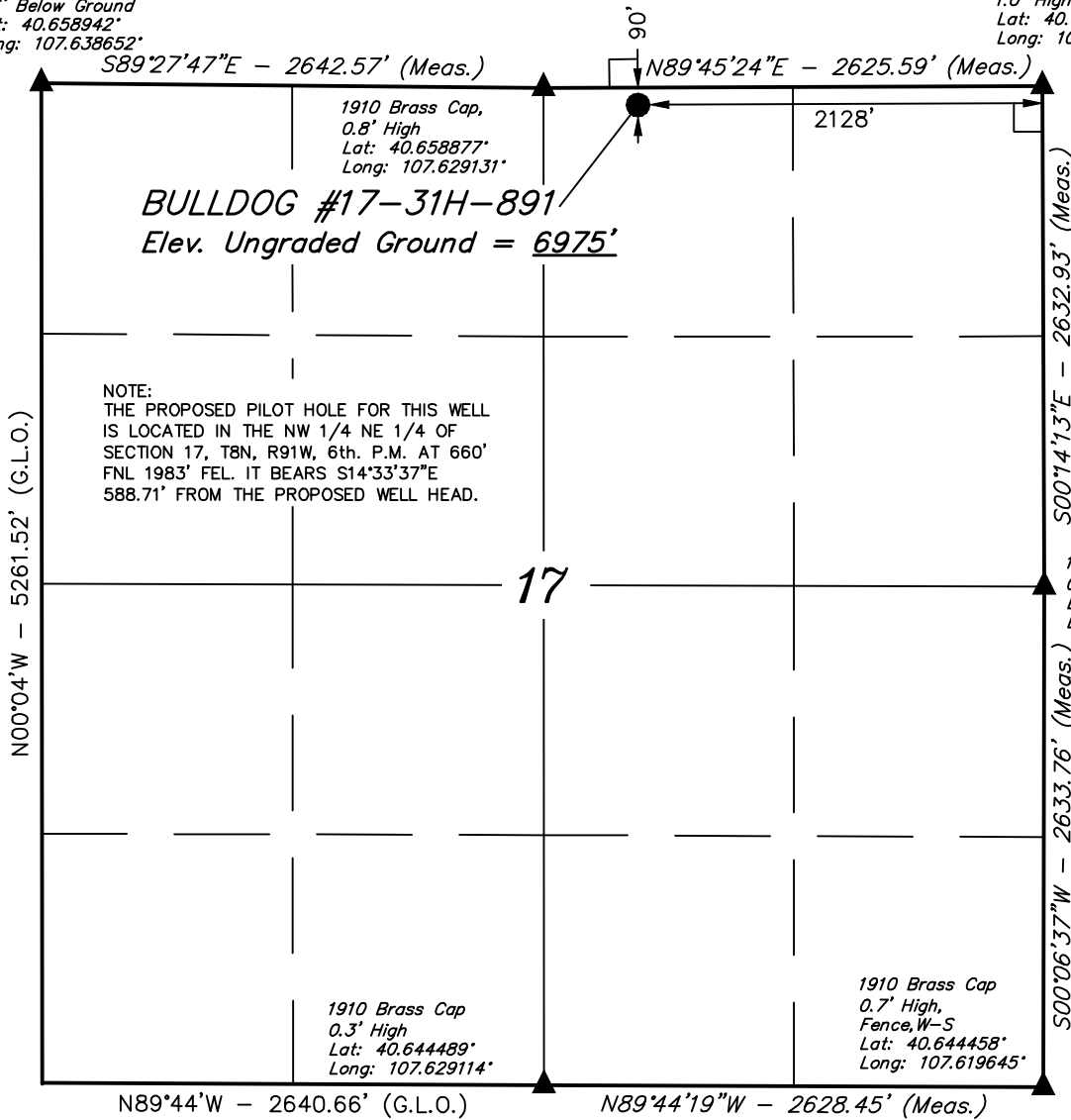


1910 Brass Cap,  
0.6' Below Ground  
Lat: 40.658942°  
Long: 107.638652°

T8N, R91W, 6th. P.M.

1910 Brass Cap,  
1.0' High  
Lat: 40.658910°  
Long: 107.619670°



## AXIA ENERGY

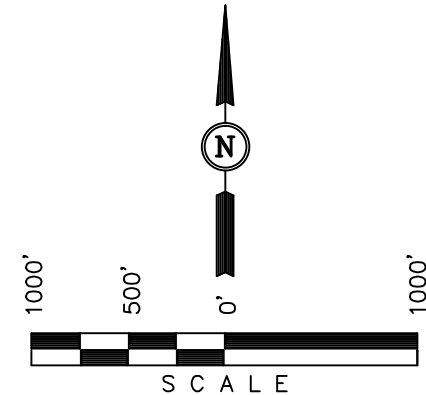
Well location, BULLDOG #17-31H-891(Surface Location), located as shown in the NW 1/4 NE 1/4 of Section 17, T8N, R91W, 6th. P.M., Moffat County, Colorado.

### BASIS OF ELEVATION

SPOT ELEVATION LOCATED AT THE SOUTHWEST CORNER OF SECTION 15, T7N, R91W, 6th P.M. TAKEN FROM THE CRAIG QUADRANGLE, COLORADO, MOFFAT COUNTY, 7.5 MINUTE QUAD (TOPOGRAPHIC MAP) PUBLISHED BY THE UNITED STATES DEPARTMENT OF THE INTERIOR, GEOLOGICAL SURVEY. SAID ELEVATION IS MARKED AS BEING 6672 FEET.

### BASIS OF BEARINGS

BASIS OF BEARINGS IS A G.P.S. OBSERVATION.



### CERTIFICATE

THIS IS TO CERTIFY THAT THE ABOVE PLAT WAS PREPARED FROM FIELD NOTES OF ACTUAL SURVEYS MADE BY ME OR UNDER MY SUPERVISION AND THAT THE SAME ARE TRUE AND CORRECT TO THE BEST OF MY KNOWLEDGE AND BELIEF.

REGISTERED LAND SURVEYOR  
REGISTRATION NO. 17492  
STATE OF COLORADO  
09-23-13

REVISED: 09-23-13 M.D.

UINTAH ENGINEERING & LAND SURVEYING  
85 SOUTH 200 EAST - VERNAL, UTAH 84078  
(435) 789-1017

PDOP = 1.1

NAD 83 (SURFACE LOCATION)  
LATITUDE = 40°39'31.10" (40.658638)  
LONGITUDE = 107°37'38.42" (107.627338)  
NAD 27 (SURFACE LOCATION)  
LATITUDE = 40°39'31.21" (40.658668)  
LONGITUDE = 107°37'36.17" (107.626713)  
STATE PLANE NAD 83  
N: 1489863.80 E: 2409831.50  
STATE PLANE NAD 27  
N: 489862.38 E: 1409989.16

|                           |                            |                         |
|---------------------------|----------------------------|-------------------------|
| SCALE<br>1" = 1000'       | DATE SURVEYED:<br>01-11-13 | DATE DRAWN:<br>01-11-13 |
| PARTY<br>G.M. M.A. J.G.G. | REFERENCES<br>G.L.O. PLAT  |                         |
| WEATHER<br>COLD           | FILE<br>AXIA ENERGY        |                         |

### LEGEND:

- └─ = 90° SYMBOL
- = PROPOSED WELL HEAD.
- ▲ = SECTION CORNERS LOCATED.

T8N, R91W, 6th. P.M.

AXIA ENERGY

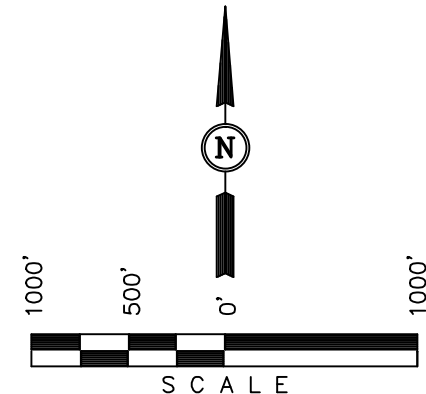
Well location, BULLDOG #17-31H-891 (Target Bottom Hole Location), located as shown in the SW 1/4 SE 1/4 of Section 20, T8N, R91W, 6th. P.M., Moffat County, Colorado.

### BASIS OF ELEVATION

SPOT ELEVATION LOCATED AT THE SOUTHWEST CORNER OF SECTION 15, T7N, R91W, 6th P.M. TAKEN FROM THE CRAIG QUADRANGLE, COLORADO, MOFFAT COUNTY, 7.5 MINUTE QUAD (TOPOGRAPHIC MAP) PUBLISHED BY THE UNITED STATES DEPARTMENT OF THE INTERIOR, GEOLOGICAL SURVEY. SAID ELEVATION IS MARKED AS BEING 6672 FEET.

### BASIS OF BEARINGS

BASIS OF BEARINGS IS A G.P.S. OBSERVATION.



### CERTIFICATE

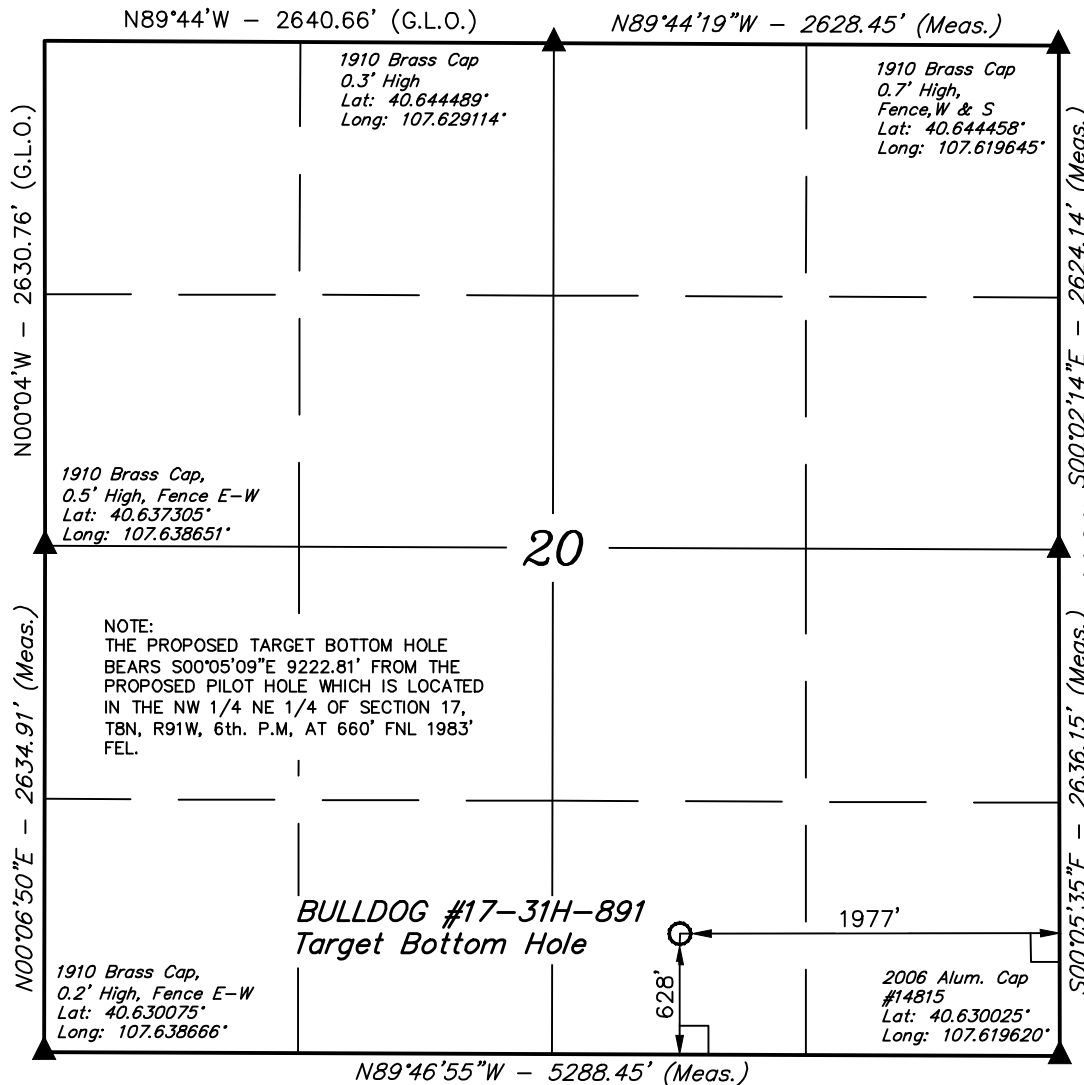
THIS IS TO CERTIFY THAT THE ABOVE PLAT WAS PREPARED FROM FIELD NOTES OF ACTUAL SURVEYS MADE BY ME OR UNDER MY SUPERVISION AND THAT THE SAME ARE TRUE AND CORRECT TO THE BEST OF MY KNOWLEDGE AND BELIEF.

REGISTERED LAND SURVEYOR  
REGISTRATION NO. 17492  
STATE OF COLORADO  
09-23-13

REVISED: 09-23-13 M.D.

**UINTAH ENGINEERING & LAND SURVEYING**  
85 SOUTH 200 EAST - VERNAL, UTAH 84078  
(435) 789-1017

|                           |                            |                         |
|---------------------------|----------------------------|-------------------------|
| SCALE<br>1" = 1000'       | DATE SURVEYED:<br>01-11-13 | DATE DRAWN:<br>01-11-13 |
| PARTY<br>G.M. M.A. J.G.G. | REFERENCES<br>G.L.O. PLAT  |                         |
| WEATHER<br>COLD           | FILE<br>AXIA ENERGY        |                         |



### LEGEND:

- └─ = 90° SYMBOL
- = PROPOSED WELL HEAD.
- ▲ = SECTION CORNERS LOCATED.

|                                    |                            |
|------------------------------------|----------------------------|
| <b>NAD 83 (TARGET BOTTOM HOLE)</b> |                            |
| LATITUDE =                         | 40°37'54.36" (40.631767)   |
| LONGITUDE =                        | 107°37'36.28" (107.626744) |
| <b>NAD 27 (TARGET BOTTOM HOLE)</b> |                            |
| LATITUDE =                         | 40°37'54.47" (40.631797)   |
| LONGITUDE =                        | 107°37'34.03" (107.626119) |
| <b>STATE PLANE NAD 83</b>          |                            |
| N: 1480073.39                      | E: 2409761.32              |
| <b>STATE PLANE NAD 27</b>          |                            |
| N: 480072.04                       | E: 1409919.01              |