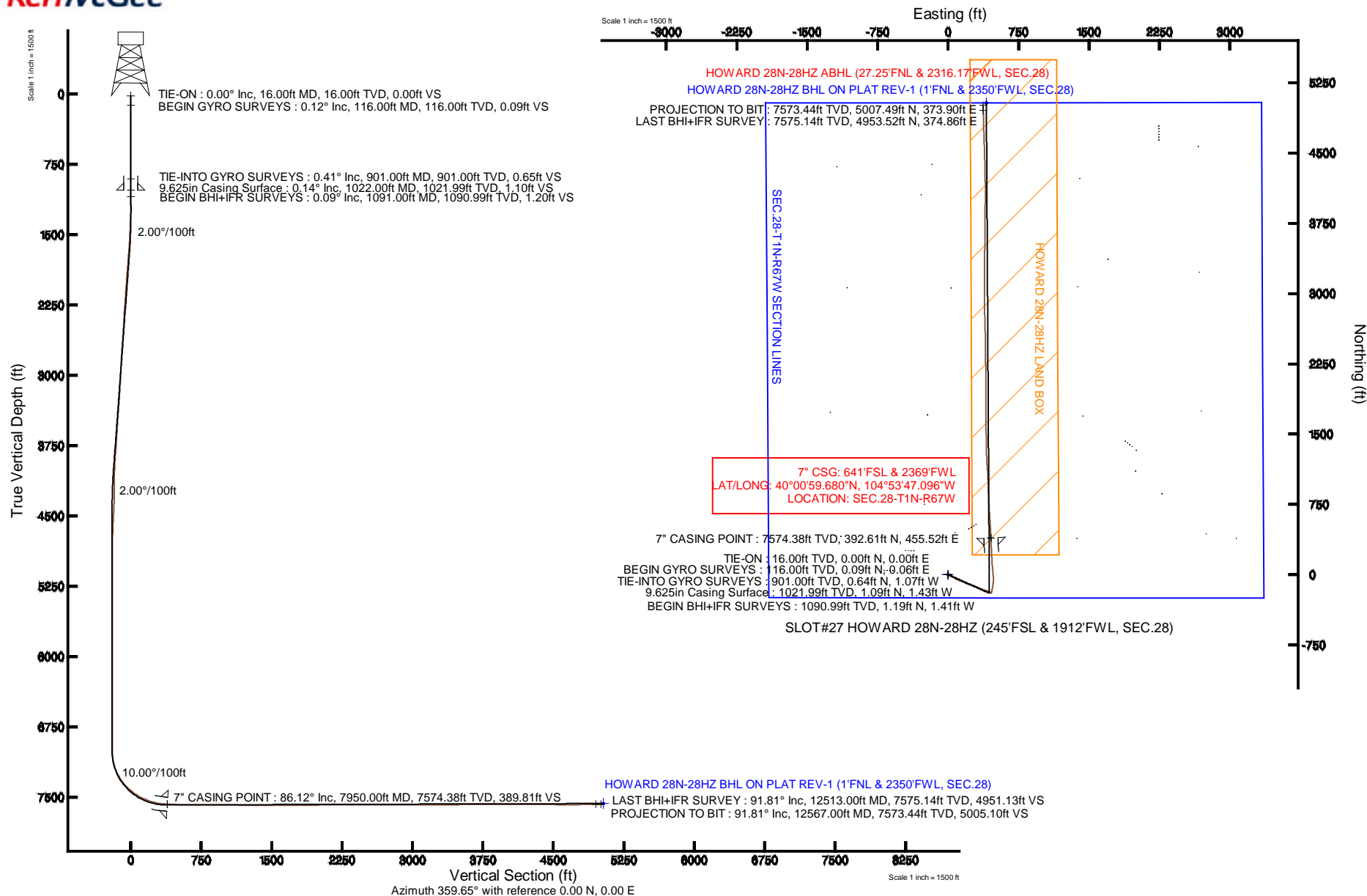


# KERR-MCGEE OIL & GAS ONSHORE LP

Location: COLORADO Slot: SLOT#27 HOWARD 28N-28HZ (245'FSL & 1912'FWL, SEC.28)  
 Field: WELD COUNTY (KERR MCGEE) Well: HOWARD 28N-28HZ  
 Facility: SEC.28-T1N-R67W Wellbore: HOWARD 28N-28HZ PWB

Plot reference wellpath is HOWARD 28N-28HZ (REV-A.0) PWP

True vertical depths are referenced to XTREME 24 (RKB)	Grid System: NAD83 / Lambert Colorado SP, Northern Zone (501), US feet
Measured depths are referenced to XTREME 24 (RKB)	North Reference: True north
XTREME 24 (RKB) to Mean Sea Level: 5036 feet	Scale: True distance
Mean Sea Level to Mud line (At Slot: SLOT#27 HOWARD 28N-28HZ (245'FSL & 1912'FWL, SEC.28)): 0 feet	Depths are in feet
Coordinates are in feet referenced to Slot	Created by: robale01 on 14/Oct/2013



## REFERENCE WELLPATH IDENTIFICATION

Operator	KERR-MCGEE OIL & GAS ONSHORE LP	Slot	SLOT#27 HOWARD 28N-28HZ (245'FSL & 1912'FWL, SEC.28)
Area	COLORADO	Well	HOWARD 28N-28HZ
Field	WELD COUNTY (KERR MCGEE)	Wellbore	HOWARD 28N-28HZ AWB
Facility	SEC.28-T1N-R67W		

## REPORT SETUP INFORMATION

Projection System	NAD83 / Lambert Colorado SP, Northern Zone (501), US feet	Software System	WellArchitect® 4.0.0
North Reference	True	User	Robiale01
Scale	0.999965	Report Generated	14/Oct/2013 at 09:54
Convergence at slot	n/a	Database/Source file	WA_ANADARKO/HOWARD_28N-28HZ_AWB.xml

## WELLPATH LOCATION

	Local coordinates		Grid coordinates		Geographic coordinates	
	North[ft]	East[ft]	Easting[US ft]	Northing[US ft]	Latitude	Longitude
Slot Location	1411923.55	2715217.46	3168601.09	1249065.35	40°00'55.800"N	104°53'52.951"W
Facility Reference Pt			316923.76	121463.46	36°32'36.656"N	114°37'52.006"W
Field Reference Pt			3197771.84	1268891.29	40°04'09.600"N	104°47'36.000"W

## WELLPATH DATUM

Calculation method	Minimum curvature	XTREME 24 (RKB) to Facility Vertical Datum	5036.00ft
Horizontal Reference Pt	Slot	XTREME 24 (RKB) to Mean Sea Level	5036.00ft
Vertical Reference Pt	XTREME 24 (RKB)	XTREME 24 (RKB) to Mud Line at Slot (SLOT#27 HOWARD 28N-28HZ (245'FSL & 1912'FWL, SEC.28))	5036.00ft
MD Reference Pt	XTREME 24 (RKB)	Section Origin	N 0.00, E 0.00 ft
Field Vertical Reference	Mean Sea Level	Section Azimuth	4.27°

# Actual Wellpath Report

HOWARD 28N-28HZ AWP

Page 2 of 6

## REFERENCE WELLPATH IDENTIFICATION

Operator	KERR-MCGEE OIL & GAS ONSHORE LP	Slot	SLOT#27 HOWARD 28N-28HZ (245'FSL & 1912'FWL, SEC.28)
Area	COLORADO	Well	HOWARD 28N-28HZ
Field	WELD COUNTY (KERR MCGEE)	Wellbore	HOWARD 28N-28HZ AWB
Facility	SEC.28-T1N-R67W		

## WELLPATH DATA (119 stations) † = interpolated/extrapolated station

MD [ft]	Inclination [°]	Azimuth [°]	TVD [ft]	Vert Sect [ft]	North [ft]	East [ft]	Latitude	Longitude	DLS [°/100ft]	Comments
0.00†	0.000	31.920	0.00	0.00	0.00	0.00	40°00'55.800"N	104°53'52.951"W	0.00	
16.00	0.000	31.920	16.00	0.00	0.00	0.00	40°00'55.800"N	104°53'52.951"W	0.00	TIE-ON
116.00	0.120	31.920	116.00	0.09	0.09	0.06	40°00'55.801"N	104°53'52.950"W	0.12	BEGIN GYRO SURVEYS
216.00	0.140	24.600	216.00	0.30	0.29	0.16	40°00'55.803"N	104°53'52.949"W	0.03	
316.00	0.140	173.180	316.00	0.29	0.28	0.23	40°00'55.803"N	104°53'52.948"W	0.27	
416.00	0.070	257.760	416.00	0.16	0.14	0.18	40°00'55.801"N	104°53'52.949"W	0.15	
516.00	0.130	14.050	516.00	0.25	0.24	0.15	40°00'55.802"N	104°53'52.949"W	0.17	
616.00	0.140	253.220	616.00	0.32	0.32	0.06	40°00'55.803"N	104°53'52.950"W	0.23	
716.00	0.260	269.640	716.00	0.26	0.28	-0.28	40°00'55.803"N	104°53'52.955"W	0.13	
816.00	0.230	293.890	816.00	0.31	0.36	-0.69	40°00'55.804"N	104°53'52.960"W	0.11	
901.00	0.410	314.990	901.00	0.56	0.64	-1.07	40°00'55.806"N	104°53'52.965"W	0.25	TIE-INTO GYRO SURVEYS
1091.00	0.090	62.600	1090.99	1.08	1.19	-1.41	40°00'55.812"N	104°53'52.969"W	0.23	BEGIN BHI+IFR SURVEYS
1184.00	1.120	117.270	1183.99	0.77	0.81	-0.54	40°00'55.808"N	104°53'52.958"W	1.15	
1279.00	3.080	122.350	1278.92	-0.80	-0.98	2.44	40°00'55.790"N	104°53'52.920"W	2.07	
1373.00	4.250	122.670	1372.73	-3.64	-4.21	7.51	40°00'55.758"N	104°53'52.855"W	1.24	
1467.00	5.460	113.200	1466.39	-6.75	-7.85	14.55	40°00'55.722"N	104°53'52.764"W	1.54	
1561.00	7.570	116.800	1559.78	-10.57	-12.41	24.19	40°00'55.677"N	104°53'52.640"W	2.29	
1655.00	9.470	117.240	1652.74	-15.96	-18.74	36.59	40°00'55.615"N	104°53'52.481"W	2.02	
1749.00	9.200	116.920	1745.49	-21.88	-25.68	50.17	40°00'55.546"N	104°53'52.306"W	0.29	
1843.00	9.200	116.360	1838.28	-27.60	-32.42	63.60	40°00'55.480"N	104°53'52.134"W	0.10	
1938.00	9.790	118.180	1931.98	-33.72	-39.61	77.52	40°00'55.409"N	104°53'51.955"W	0.70	
2032.00	8.360	118.750	2024.80	-39.80	-46.67	90.56	40°00'55.339"N	104°53'51.787"W	1.52	
2124.00	9.550	112.030	2115.68	-44.90	-52.75	103.50	40°00'55.279"N	104°53'51.621"W	1.72	
2215.00	10.320	114.260	2205.31	-49.98	-58.93	117.93	40°00'55.218"N	104°53'51.435"W	0.95	
2397.00	8.940	111.510	2384.75	-59.75	-70.81	145.95	40°00'55.100"N	104°53'51.075"W	0.80	
2488.00	9.220	112.680	2474.61	-64.15	-76.22	159.25	40°00'55.047"N	104°53'50.904"W	0.37	
2579.00	8.710	111.670	2564.49	-68.51	-81.57	172.38	40°00'54.994"N	104°53'50.735"W	0.59	
2670.00	9.360	115.880	2654.37	-73.30	-87.35	185.44	40°00'54.937"N	104°53'50.568"W	1.02	
2762.00	9.290	115.120	2745.15	-78.69	-93.76	198.90	40°00'54.873"N	104°53'50.395"W	0.15	
2853.00	8.290	107.290	2835.08	-82.79	-98.83	211.81	40°00'54.823"N	104°53'50.229"W	1.71	
2943.00	10.650	111.010	2923.85	-86.64	-103.74	225.78	40°00'54.775"N	104°53'50.049"W	2.71	
3035.00	9.700	101.720	3014.41	-90.10	-108.37	241.30	40°00'54.729"N	104°53'49.850"W	2.06	
3126.00	9.000	107.360	3104.20	-92.70	-112.05	255.60	40°00'54.693"N	104°53'49.666"W	1.27	
3218.00	10.340	109.070	3194.89	-96.44	-116.89	270.27	40°00'54.645"N	104°53'49.477"W	1.49	
3310.00	9.810	114.810	3285.48	-101.30	-122.88	285.19	40°00'54.586"N	104°53'49.286"W	1.23	
3401.00	9.600	116.970	3375.17	-106.95	-129.57	298.99	40°00'54.520"N	104°53'49.108"W	0.46	
3493.00	9.960	112.000	3465.84	-112.33	-136.03	313.21	40°00'54.456"N	104°53'48.926"W	1.00	
3584.00	10.480	110.030	3555.40	-116.98	-141.82	328.28	40°00'54.399"N	104°53'48.732"W	0.69	
3677.00	10.190	108.450	3646.89	-121.29	-147.32	344.03	40°00'54.344"N	104°53'48.529"W	0.44	
3770.00	9.290	116.350	3738.55	-126.13	-153.25	358.56	40°00'54.285"N	104°53'48.343"W	1.73	
3863.00	9.160	115.320	3830.35	-131.61	-159.75	371.98	40°00'54.221"N	104°53'48.170"W	0.23	
3956.00	9.190	111.470	3922.16	-136.46	-165.63	385.58	40°00'54.163"N	104°53'47.995"W	0.66	
4050.00	6.820	107.570	4015.24	-139.97	-170.07	397.89	40°00'54.119"N	104°53'47.837"W	2.59	
4143.00	4.880	91.750	4107.75	-141.06	-171.85	407.11	40°00'54.102"N	104°53'47.719"W	2.69	
4237.00	5.010	84.560	4201.40	-140.20	-171.59	415.19	40°00'54.104"N	104°53'47.615"W	0.67	

# Actual Wellpath Report

HOWARD 28N-28HZ AWP

Page 3 of 6

## REFERENCE WELLPATH IDENTIFICATION

Operator	KERR-MCGEE OIL & GAS ONSHORE LP	Slot	SLOT#27 HOWARD 28N-28HZ (245'FSL & 1912'FWL, SEC.28)
Area	COLORADO	Well	HOWARD 28N-28HZ
Field	WELD COUNTY (KERR MCGEE)	Wellbore	HOWARD 28N-28HZ AWB
Facility	SEC.28-T1N-R67W		

## WELLPATH DATA (119 stations) † = interpolated/extrapolated station

MD [ft]	Inclination [°]	Azimuth [°]	TVD [ft]	Vert Sect [ft]	North [ft]	East [ft]	Latitude	Longitude	DLS [°/100ft]	Comments
4330.00	4.200	107.440	4294.11	-140.29	-172.22	422.48	40°00'54.098"N	104°53'47.521"W	2.14	
4423.00	4.560	124.570	4386.84	-142.93	-175.34	428.78	40°00'54.067"N	104°53'47.440"W	1.45	
4516.00	5.230	129.930	4479.50	-147.26	-180.16	435.07	40°00'54.020"N	104°53'47.359"W	0.87	
4610.00	4.340	129.510	4573.17	-151.81	-185.17	441.10	40°00'53.970"N	104°53'47.282"W	0.95	
4704.00	3.080	128.300	4666.98	-155.28	-189.00	445.83	40°00'53.932"N	104°53'47.221"W	1.34	
4789.00	1.840	129.630	4751.90	-157.35	-191.29	448.67	40°00'53.910"N	104°53'47.184"W	1.46	
4874.00	1.130	132.140	4836.87	-158.65	-192.72	450.34	40°00'53.895"N	104°53'47.163"W	0.84	
4959.00	0.910	125.630	4921.85	-159.52	-193.67	451.51	40°00'53.886"N	104°53'47.148"W	0.29	
5130.00	0.860	98.480	5092.83	-160.32	-194.65	453.89	40°00'53.876"N	104°53'47.117"W	0.24	
5385.00	1.750	76.030	5347.77	-159.24	-194.00	459.56	40°00'53.883"N	104°53'47.045"W	0.40	
5470.00	1.100	88.150	5432.74	-158.75	-193.66	461.63	40°00'53.886"N	104°53'47.018"W	0.84	
5641.00	0.550	292.030	5603.73	-158.32	-193.30	462.51	40°00'53.890"N	104°53'47.007"W	0.95	
5981.00	0.400	323.360	5943.72	-156.93	-191.73	460.29	40°00'53.905"N	104°53'47.035"W	0.09	
6322.00	0.390	280.330	6284.71	-155.90	-190.57	458.44	40°00'53.917"N	104°53'47.059"W	0.09	
6663.00	0.090	182.510	6625.71	-156.05	-190.63	457.28	40°00'53.916"N	104°53'47.074"W	0.12	
6919.00	1.180	147.380	6881.69	-158.36	-193.05	458.70	40°00'53.892"N	104°53'47.056"W	0.43	
7004.00	1.090	134.110	6966.67	-159.58	-194.35	459.75	40°00'53.879"N	104°53'47.042"W	0.33	
7047.00	1.640	33.870	7009.67	-159.30	-194.12	460.39	40°00'53.882"N	104°53'47.034"W	4.94	
7089.00	5.360	14.720	7051.58	-156.85	-191.73	461.22	40°00'53.905"N	104°53'47.023"W	9.16	
7132.00	9.640	11.970	7094.20	-151.31	-186.26	462.48	40°00'53.959"N	104°53'47.007"W	9.99	
7175.00	13.880	12.160	7136.29	-142.62	-177.69	464.31	40°00'54.044"N	104°53'46.983"W	9.86	
7217.00	17.520	10.470	7176.72	-131.35	-166.55	466.52	40°00'54.154"N	104°53'46.955"W	8.73	
7260.00	21.750	11.240	7217.21	-117.00	-152.36	469.25	40°00'54.294"N	104°53'46.920"W	9.86	
7302.00	26.710	11.870	7255.50	-99.91	-135.48	472.71	40°00'54.461"N	104°53'46.875"W	11.83	
7345.00	31.340	9.950	7293.09	-79.19	-115.00	476.64	40°00'54.664"N	104°53'46.825"W	10.98	
7387.00	35.680	5.880	7328.10	-56.06	-92.04	479.78	40°00'54.890"N	104°53'46.785"W	11.63	
7430.00	40.520	1.440	7361.94	-29.55	-65.58	481.42	40°00'55.152"N	104°53'46.764"W	12.93	
7472.00	45.070	357.680	7392.75	-1.14	-37.07	481.16	40°00'55.434"N	104°53'46.767"W	12.42	
7515.00	50.090	356.150	7421.75	30.33	-5.38	479.43	40°00'55.747"N	104°53'46.789"W	11.97	
7557.00	53.630	355.440	7447.69	63.00	27.55	477.01	40°00'56.072"N	104°53'46.820"W	8.53	
7600.00	57.330	355.210	7472.05	97.99	62.86	474.12	40°00'56.421"N	104°53'46.857"W	8.62	
7642.00	60.520	355.150	7493.73	133.50	98.70	471.09	40°00'56.775"N	104°53'46.896"W	7.60	
7685.00	65.050	356.130	7513.39	171.30	136.82	468.19	40°00'57.152"N	104°53'46.933"W	10.73	
7727.00	68.870	357.350	7529.82	209.61	175.40	466.00	40°00'57.533"N	104°53'46.962"W	9.48	
7770.00	72.540	357.150	7544.03	249.88	215.93	464.06	40°00'57.934"N	104°53'46.987"W	8.55	
7812.00	75.730	357.240	7555.51	289.97	256.28	462.08	40°00'58.333"N	104°53'47.012"W	7.60	
7855.00	80.440	357.300	7564.38	331.72	298.29	460.08	40°00'58.748"N	104°53'47.038"W	10.95	
7902.00	84.610	357.200	7570.50	377.96	344.83	457.84	40°00'59.208"N	104°53'47.067"W	8.87	
7950.00†	86.118	357.237	7574.38	425.44	392.61	455.52	40°00'59.680"N	104°53'47.096"W	3.14	7" CASING POINT
8044.00	89.070	357.310	7578.32	518.65	486.41	451.05	40°01'00.607"N	104°53'47.154"W	3.14	
8215.00	90.520	356.100	7578.93	688.15	657.12	441.22	40°01'02.294"N	104°53'47.280"W	1.10	
8300.00	89.900	356.720	7578.62	772.35	741.95	435.90	40°01'03.132"N	104°53'47.348"W	1.03	
8385.00	90.120	357.710	7578.61	856.71	826.85	431.77	40°01'03.971"N	104°53'47.401"W	1.19	
8469.00	89.010	358.410	7579.24	940.21	910.80	428.93	40°01'04.801"N	104°53'47.438"W	1.56	
8640.00	88.950	356.580	7582.29	1109.98	1081.60	421.46	40°01'06.489"N	104°53'47.534"W	1.07	

# Actual Wellpath Report

HOWARD 28N-28HZ AWP

Page 4 of 6

## REFERENCE WELLPATH IDENTIFICATION

Operator	KERR-MCGEE OIL & GAS ONSHORE LP	Slot	SLOT#27 HOWARD 28N-28HZ (245'FSL & 1912'FWL, SEC.28)
Area	COLORADO	Well	HOWARD 28N-28HZ
Field	WELD COUNTY (KERR MCGEE)	Wellbore	HOWARD 28N-28HZ AWB
Facility	SEC.28-T1N-R67W		

## WELLPATH DATA (119 stations)

MD [ft]	Inclination [°]	Azimuth [°]	TVD [ft]	Vert Sect [ft]	North [ft]	East [ft]	Latitude	Longitude	DLS [°/100ft]	Comments
8725.00	89.010	355.970	7583.80	1194.14	1166.41	415.93	40°01'07.327"N	104°53'47.605"W	0.72	
8810.00	90.060	357.140	7584.49	1278.37	1251.25	410.83	40°01'08.165"N	104°53'47.671"W	1.85	
8896.00	90.000	358.310	7584.45	1363.80	1337.18	407.41	40°01'09.014"N	104°53'47.714"W	1.36	
8981.00	90.210	359.610	7584.29	1448.44	1422.16	405.87	40°01'09.854"N	104°53'47.734"W	1.55	
9151.00	89.720	359.550	7584.39	1617.87	1592.16	404.62	40°01'11.534"N	104°53'47.750"W	0.29	
9237.00	89.660	359.310	7584.86	1703.56	1678.15	403.77	40°01'12.384"N	104°53'47.761"W	0.29	
9407.00	90.360	359.730	7584.83	1872.97	1848.15	402.34	40°01'14.064"N	104°53'47.779"W	0.48	
9578.00	90.830	0.010	7583.05	2043.46	2019.14	401.96	40°01'15.754"N	104°53'47.784"W	0.32	
9748.00	90.210	359.360	7581.51	2212.91	2189.12	401.02	40°01'17.434"N	104°53'47.796"W	0.53	
9919.00	90.520	359.310	7580.42	2383.27	2360.11	399.04	40°01'19.123"N	104°53'47.822"W	0.18	
10089.00	89.780	358.900	7579.98	2552.58	2530.09	396.38	40°01'20.803"N	104°53'47.856"W	0.50	
10259.00	89.160	358.120	7581.55	2721.71	2700.02	391.96	40°01'22.482"N	104°53'47.913"W	0.59	
10344.00	89.690	359.070	7582.40	2806.29	2784.99	389.88	40°01'23.322"N	104°53'47.940"W	1.28	
10429.00	89.690	359.630	7582.86	2890.97	2869.98	388.91	40°01'24.162"N	104°53'47.952"W	0.66	
10514.00	90.240	359.980	7582.91	2975.71	2954.98	388.62	40°01'25.002"N	104°53'47.956"W	0.77	
10683.00	89.930	359.230	7582.66	3144.15	3123.97	387.46	40°01'26.672"N	104°53'47.971"W	0.48	
10768.00	90.270	0.340	7582.52	3228.89	3208.97	387.14	40°01'27.512"N	104°53'47.975"W	1.37	
10939.00	91.100	0.870	7580.47	3399.53	3379.95	388.95	40°01'29.202"N	104°53'47.951"W	0.58	
11109.00	90.950	1.160	7577.43	3569.22	3549.89	391.96	40°01'30.881"N	104°53'47.913"W	0.19	
11279.00	90.490	0.100	7575.29	3738.87	3719.87	393.83	40°01'32.561"N	104°53'47.889"W	0.68	
11364.00	90.060	0.450	7574.89	3823.66	3804.87	394.23	40°01'33.401"N	104°53'47.883"W	0.65	
11535.00	89.560	0.450	7575.45	3994.28	3975.86	395.58	40°01'35.091"N	104°53'47.866"W	0.29	
11705.00	89.630	359.620	7576.65	4163.81	4145.85	395.68	40°01'36.770"N	104°53'47.865"W	0.49	
11875.00	89.840	358.600	7577.44	4333.11	4315.83	393.04	40°01'38.450"N	104°53'47.899"W	0.61	
12046.00	89.720	358.340	7578.10	4503.24	4486.77	388.47	40°01'40.139"N	104°53'47.957"W	0.17	
12216.00	89.840	357.810	7578.75	4672.24	4656.67	382.76	40°01'41.819"N	104°53'48.031"W	0.32	
12386.00	90.710	358.640	7577.93	4841.29	4826.58	377.50	40°01'43.498"N	104°53'48.098"W	0.71	
12513.00	91.810	358.980	7575.14	4967.68	4953.52	374.86	40°01'44.752"N	104°53'48.132"W	0.91	LAST BHI+IFR SURVEY
12567.00	91.810	358.980	7573.44	5021.43	5007.49	373.90	40°01'45.285"N	104°53'48.144"W	0.00	PROJECTION TO BIT

## HOLE & CASING SECTIONS - Ref Wellbore: HOWARD 28N-28HZ AWB Ref Wellpath: HOWARD 28N-28HZ AWP

String/Diameter	Start MD [ft]	End MD [ft]	Interval [ft]	Start TVD [ft]	End TVD [ft]	Start N/S [ft]	Start E/W [ft]	End N/S [ft]	End E/W [ft]
13.5in Open Hole	16.00	1022.00	1006.00	16.00	1021.99	0.00	0.00	1.09	-1.43
9.625in Casing Surface	16.00	1022.00	1006.00	16.00	1021.99	0.00	0.00	1.09	-1.43
8.75in Open Hole	1022.00	7960.00	6938.00	1021.99	7575.02	1.09	-1.43	402.58	455.04
7in Casing Intermediate	16.00	7950.00	7934.00	16.00	7574.38	0.00	0.00	392.61	455.52
6.125in Open Hole	7960.00	12567.00	4607.00	7575.02	7573.44	402.58	455.04	5007.49	373.90

### REFERENCE WELLPATH IDENTIFICATION

Operator	KERR-MCGEE OIL & GAS ONSHORE LP	Slot	SLOT#27 HOWARD 28N-28HZ (245'FSL & 1912'FWL, SEC.28)
Area	COLORADO	Well	HOWARD 28N-28HZ
Field	WELD COUNTY (KERR MCGEE)	Wellbore	HOWARD 28N-28HZ AWB
Facility	SEC.28-T1N-R67W		

### TARGETS

Name	MD [ft]	TVD [ft]	North [ft]	East [ft]	Grid East [US ft]	Grid North [US ft]	Latitude	Longitude	Shape
SEC.28-T1N-R67W SECTION LINES		5036.00	4726.33	2243.72	3170812.59	1253806.63	40°01'42.506"N	104°53'24.108"W	polygon
HOWARD 28N-28HZ BHL ON PLAT REV-1 (1'FNL & 2350'FWL, SEC.28)		7567.00	5033.74	407.73	3168974.62	1254101.55	40°01'45.545"N	104°53'47.710"W	point
HOWARD 28N-28HZ LAND BOX		7600.00	0.00	0.00	3168601.09	1249065.34	40°00'55.800"N	104°53'52.951"W	polygon

### WELLPATH COMPOSITION - Ref Wellbore: HOWARD 28N-28HZ AWB Ref Wellpath: HOWARD 28N-28HZ AWP

Start MD [ft]	End MD [ft]	Positional Uncertainty Model	Log Name/Comment	Wellbore
16.00	901.00	Generic gyro - continuous (Standard)	MS GYRODATA SURVEYS <116-901>	HOWARD 28N-28HZ AWB
901.00	7902.00	NaviTrak (MAGCORR,IFR)	BHI MWD+IFR SURVEYS 8 3/4" HOLE <1091-7902>	HOWARD 28N-28HZ AWB
7902.00	12513.00	NaviTrak (MAGCORR,IFR)	BHI MWD+IFR SURVEYS 6 1/8" HOLE <8044-12513>	HOWARD 28N-28HZ AWB
12513.00	12567.00	Blind Drilling (std)	Projection to bit	HOWARD 28N-28HZ AWB





# Actual Wellpath Report

HOWARD 28N-28HZ AWP

Page 6 of 6



## REFERENCE WELLPATH IDENTIFICATION

Operator	KERR-MCGEE OIL & GAS ONSHORE LP	Slot	SLOT#27 HOWARD 28N-28HZ (245'FSL & 1912'FWL, SEC.28)
Area	COLORADO	Well	HOWARD 28N-28HZ
Field	WELD COUNTY (KERR MCGEE)	Wellbore	HOWARD 28N-28HZ AWB
Facility	SEC.28-T1N-R67W		

## WELLPATH COMMENTS

MD [ft]	Inclination [°]	Azimuth [°]	TVD [ft]	Comment
16.00	0.000	31.920	16.00	TIE-ON
116.00	0.120	31.920	116.00	BEGIN GYRO SURVEYS
901.00	0.410	314.990	901.00	TIE-INTO GYRO SURVEYS
1091.00	0.090	62.600	1090.99	BEGIN BHI+IFR SURVEYS
7950.00	86.118	357.237	7574.38	7" CASING POINT
12513.00	91.810	358.980	7575.14	LAST BHI+IFR SURVEY
12567.00	91.810	358.980	7573.44	PROJECTION TO BIT