



Scale 1:240 (5"=100') Imperial
Measured Depth Log

Well Name: Howard 28N-28HZ
 Location: Weld County, CO.
 License Number: 05123376780000
 Spud Date: 09/09/13
 Surface Coordinates: 246'FSL & 1882'FWL, SEC.28, T1N-R67W
 Region: Weld County
 Drilling Completed:
 Bottom Hole Coordinates: 1'FNL & 2350'FWL, SEC.28, T1N-R67W
 Ground Elevation (ft): 5036' K.B. Elevation (ft): 5049'
 Logged Interval (ft): 7000' To: Total Depth (ft):
 Formation: Niobrara
 Type of Drilling Fluid: Water Based Mud

Printed by MUD.LOG from WellSight Systems 1-800-447-1534 www.WellSight.com

OPERATOR

Company: Anadarko Petroleum Corporation
 Address: Granite Tower
 1099 18th Street, #1800
 Denver, CO 80202

GEOLOGIST

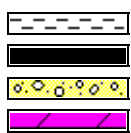
Name: Scott Crozier / Ben Thompson
 Company: Great Divide Consulting, Inc
 Address: P.O. Box 630263
 Highlands Ranch, CO 80163

Comments

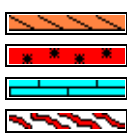
ROCK TYPES



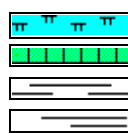
Anhy
Bent
Brec
Cht



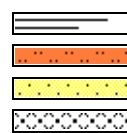
Clyst
Coal
Congl
Dol



Gyp
Igne
Lmst
Meta

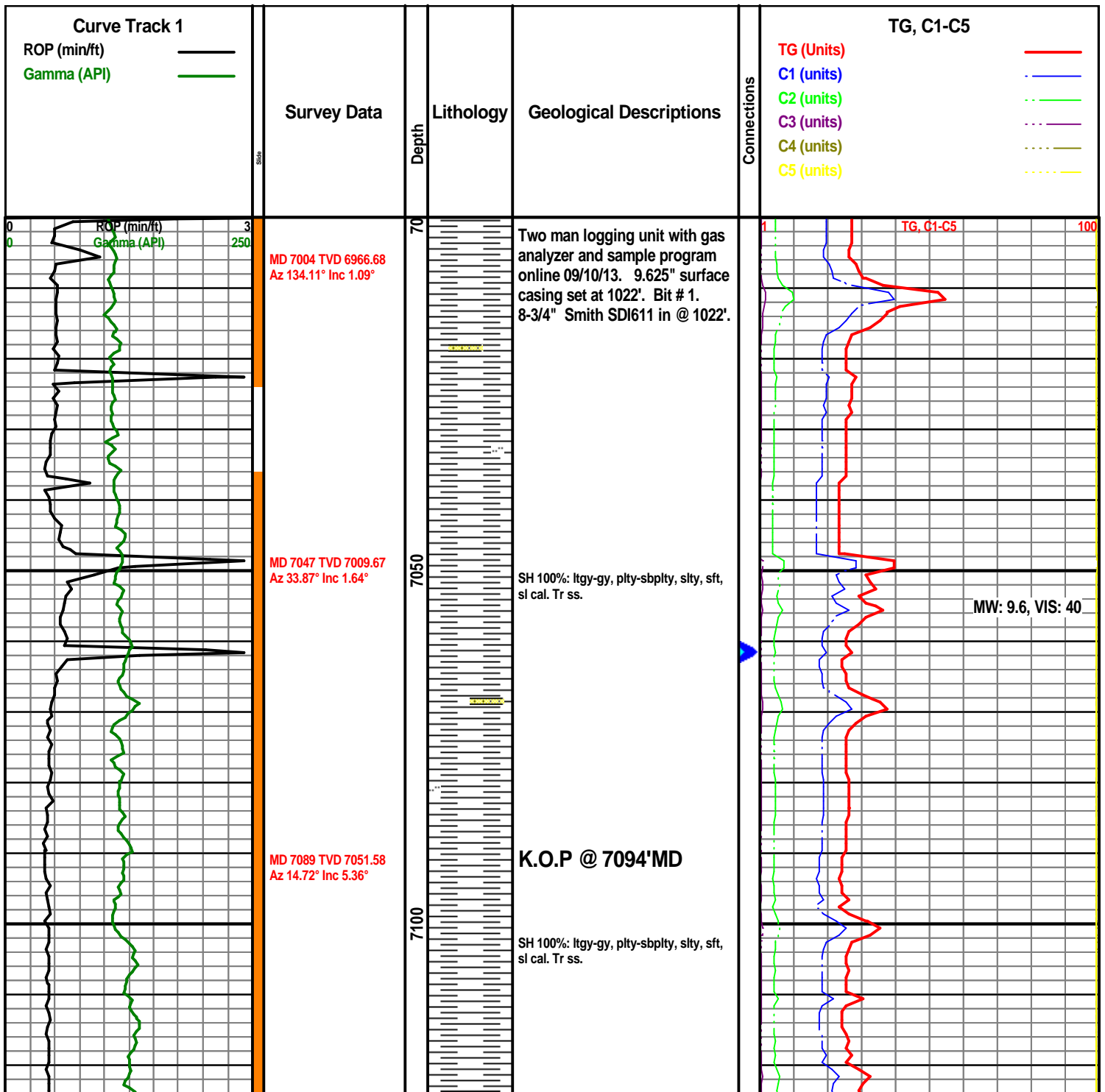


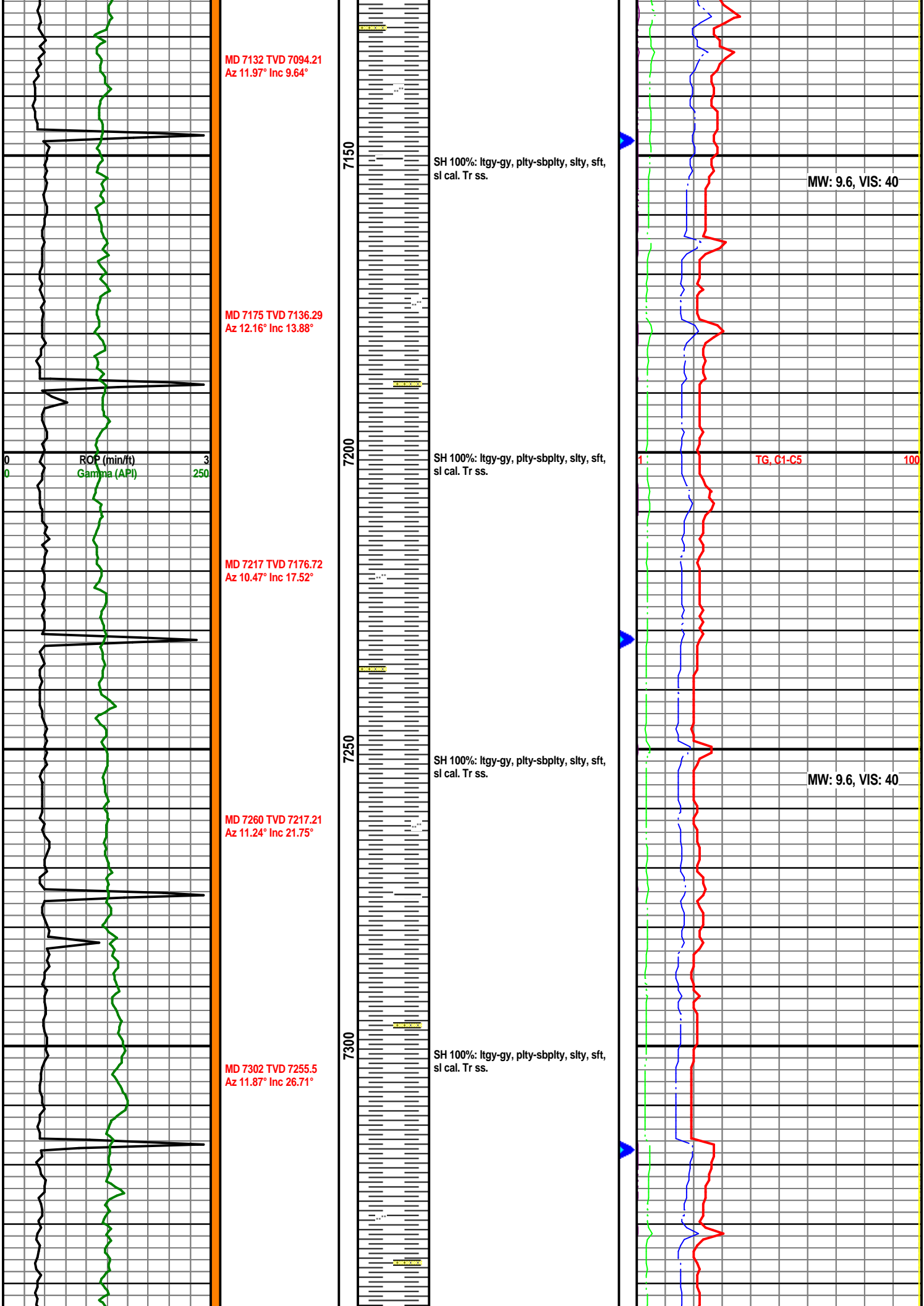
Mrlst
Salt
Shale
Shcol

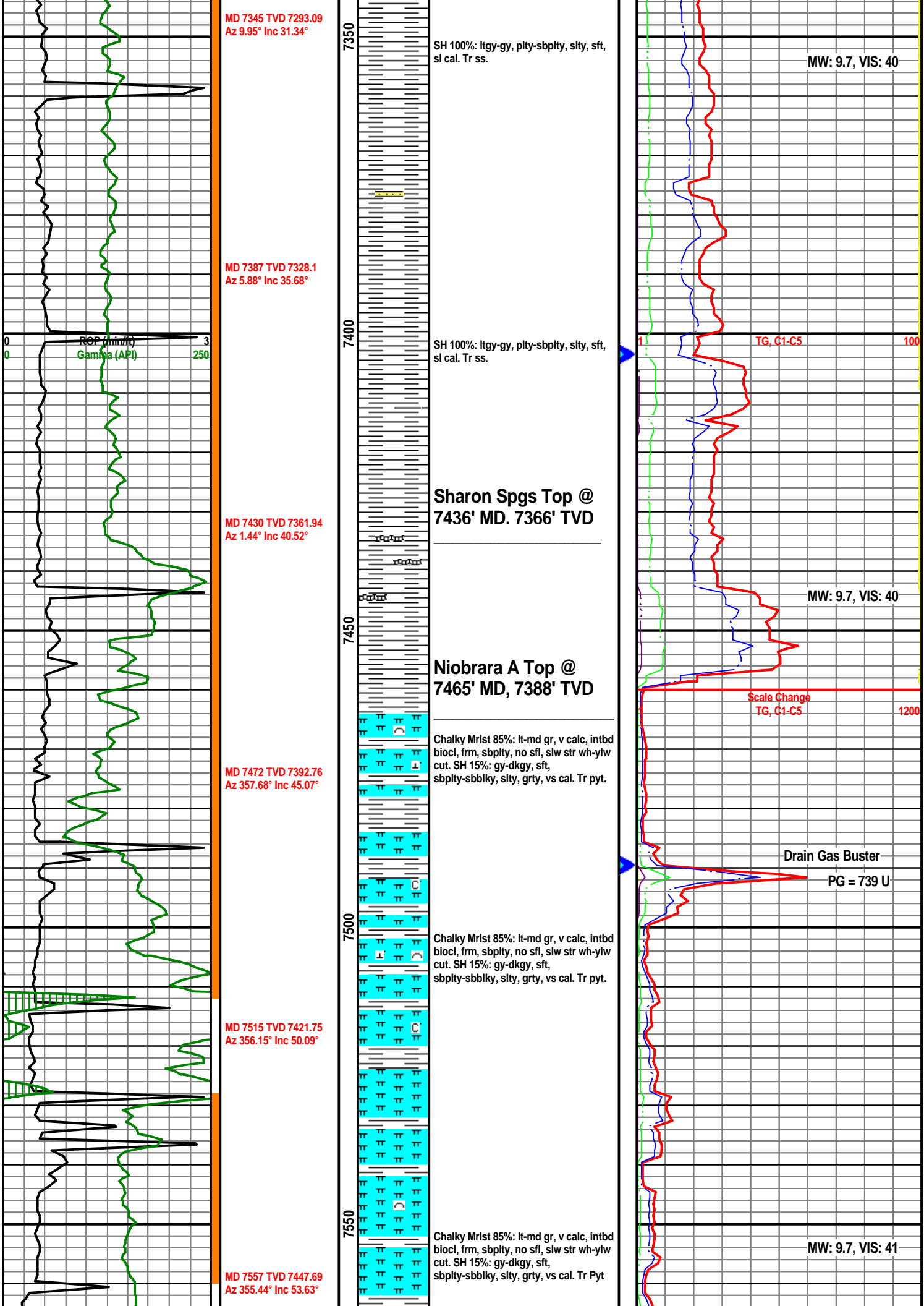


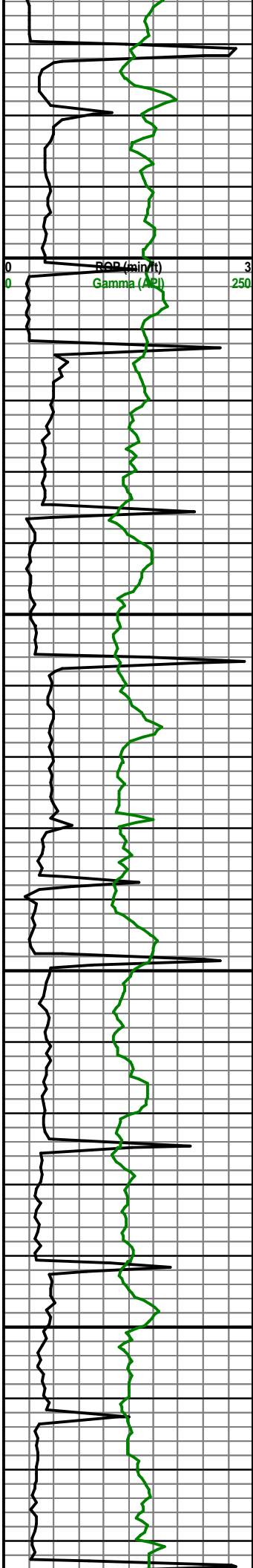
Shgy
Sltst
Ss
Till

BS	Boundst
C	Chalky
EX	CryxIn
E	Earthy
FX	FinexIn
GS	Grainst
L	Lithogr
MX	MicroxIn
MS	Mudst
PS	Packst
WS	Wackest









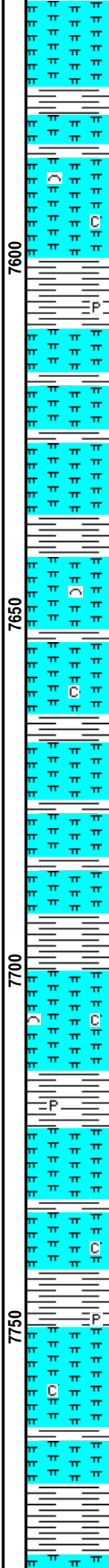
MD 7600 TVD 7472.05
Az 355.21° Inc 57.33°

MD 7642 TVD 7493.73
Az 355.15° Inc 60.52°

MD 7685 TVD 7513.39
Az 356.13° Inc 65.05°

MD 7727 TVD 7529.82
Az 357.35° Inc 68.87°

MD 7770 TVD 7544.03
Az 357.15° Inc 72.54°

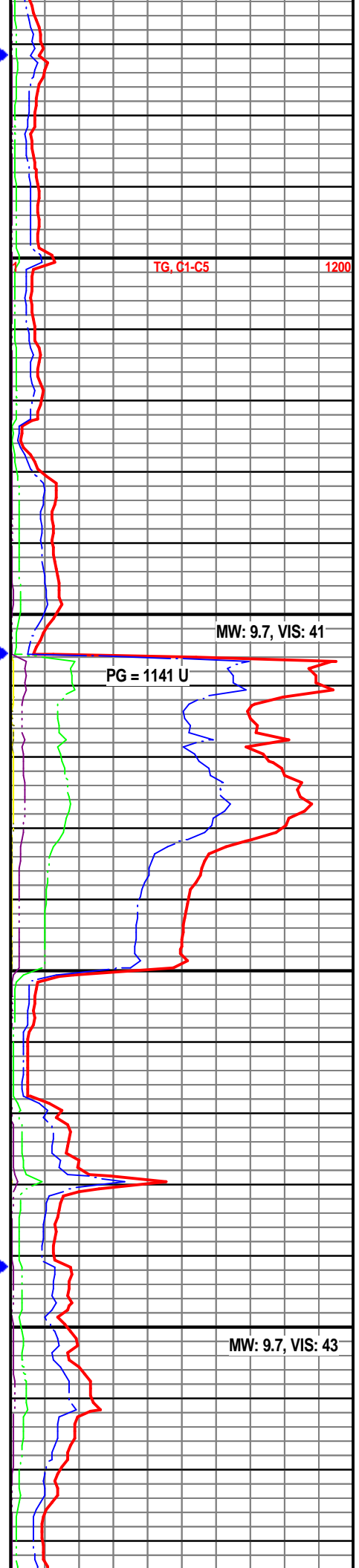


Chalky Mrlst 85%: lt-md gr, v calc, intbd biocl, frm, sbpity, no sfl, slw str wh-ylw cut. SH 15%: gy-dkgy, sft, sbpity-sbbiky, slty, grty, vs cal. Tr Pyt

Chalky Mrlst 85%: lt-md gr, v calc, intbd biocl, frm, sbpity, no sfl, slw str wh-ylw cut. SH 15%: gy-dkgy, sft, sbpity-sbbiky, slty, grty, vs cal. Tr Pyt

Chalky Mrlst 85%: lt-md gr, v calc, intbd biocl, frm, sbpity, no sfl, slw str wh-ylw cut. SH 15%: gy-dkgy, sft, sbpity-sbbiky, slty, grty, vs cal. Tr Pyt

Chalky Mrlst 85%: lt-md gr, v calc, intbd biocl, frm, sbpity, no sfl, slw str wh-ylw cut. SH 15%: gy-dkgy, sft, sbpity-sbbiky, slty, grty, vs cal. Tr Pyt



TG, C1-C5

1200

MW: 9.7, VIS: 41

PG = 1141 U

MW: 9.7, VIS: 43

