



TIMBRO FEDERAL LD07-78HN 1" MD FINAL
(Scale: 1"=100' (100'))

Company: Noble Energy

State: Colorado

Well: Timbro Federal LD07-78HN

County: Weld

Field: Wildcat

Country: United States

Well ID: 05-123-37002

Job Number: RM-13503

Location: Lat: 40° 46' 20.040 N / Long: 103° 54' 57.030 W

Elev KB: 4884

Operator 1: DDC

Elev DF: 30

Operator 2: SCOTT SIMS

Elev GL: 4854

Comment 1:

Comment 2:

Comment 3:

Comment 4:

Comment 5:

| Hole Data | | | Casing Record | | |
|-----------|--------|---------|---------------|--------|--------|
| Size | From | To | Size | From | To |
| 13 3/4 | 0' | 633' | 9 5/8 | 0' | 623' |
| 8 3/4 | 633' | 6,308' | 7 | 623' | 5,298' |
| 6 1/8 | 6,308' | 10,293' | 4 1/2 | 5,298' | |
| | | | | | |
| | | | | | |

| Tool Run Data | | Run #1 | Run #2 | Run #3 | Run #4 | Run #5 |
|---------------|--|---------|---------|---------|--------|--------|
| Tool S/N | | 1307 | 1307 | 1307 | | |
| Cal Factor | | 4.022 | 4.022 | 2.599 | | |
| Gamma Offset | | 36 | 36 | 40 | | |
| Start Depth | | 633 | 5,210' | 6,308' | | |
| Start Date | | 6/26/13 | 6/27/13 | 6/29/13 | | |
| Start Time | | 12:00 | 16:30 | 11:30 | | |
| End Depth | | 5,210' | 6,308' | 10,293' | | |
| End Date | | 6/27/13 | 6/28/13 | 6/30/13 | | |
| End Time | | 08:00 | 03:30 | 21:30 | | |

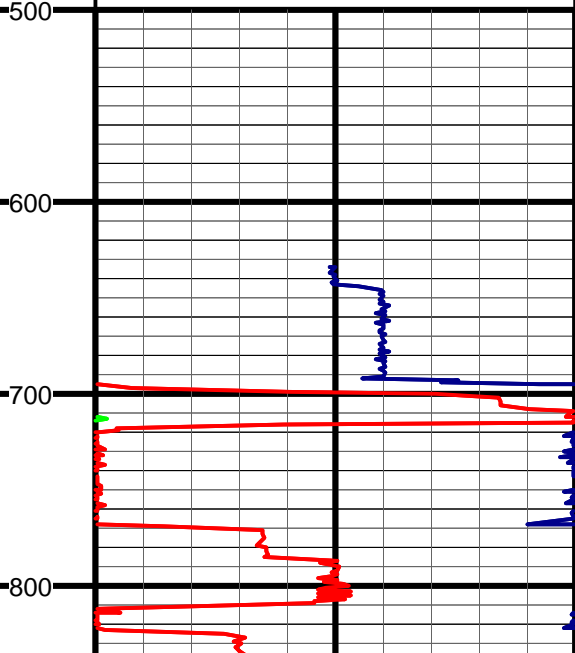
#2 MD:633.0 TVD:633.0 I:0.2 A:297.8 VS:-0.6
#3 MD:643.0 TVD:643.0 I:0.2 A:49.3 VS:-0.6

ROP (MD) Track: 1
Ft/Hr

0 500 1000 1500

500 1000

Depth
1":100' (100')



Gamma API (MD) Track: 1
API

0 150 300

150 300

