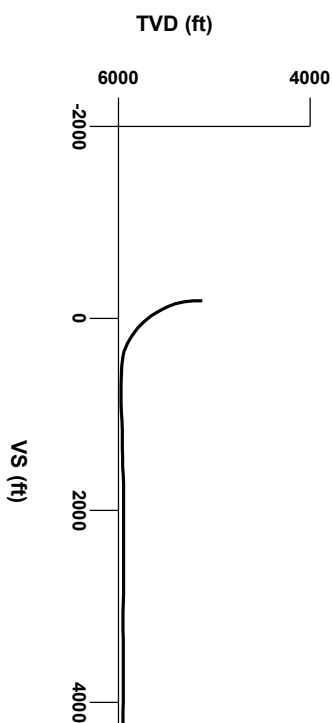




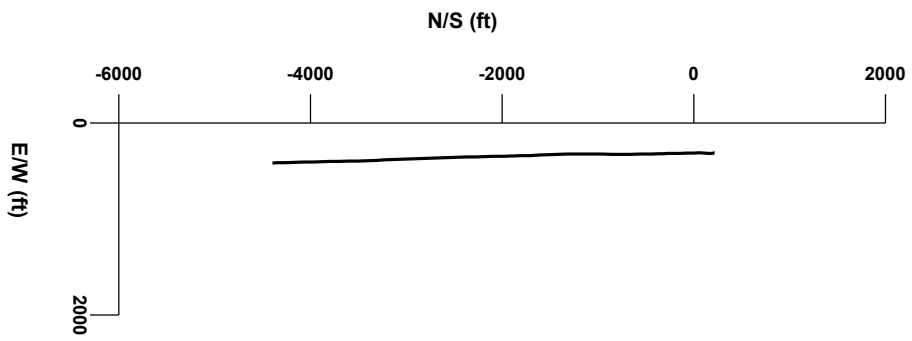
LOG created using LPLOT VH Version 3.0, July 01, 2013, Copyright (C) 1999-2009 Pason Systems Corp.

OPERATOR: NOBLE ENERGY INC.
WELL: TIMBRO FEDERAL LD07-78HN
LOCATION: SEC 7, T9N, R58W
COUNTY: WELD
STATE: COLORADO
SPOT: 255' FNL, 360' FWL
ELEVATION: GR 4854', KB 4884'
FIELD: WILDCAT
SPUD DATE: 06/25/2013
TD DATE: 06/30/2013
DATES LOGGED: 06/27/13 - 06/30/2013
DEPTHS LOGGED: 5210' MD - 10293' MD
LOGGERS: ANDREA ZUIDEMA, MATTHEW HOPKINS
DRILLING FLUID: LSND
DRILLING RIG: H&P 326
API: 05-123-37002
LOG TYPE: HORIZONTAL
SCALE: 1:240 (5 inches per 100 feet)
REMARKS: WELLSITE GEOLOGICAL SERVICES
PROVIDED BY COLUMBINE LOGGING INC.

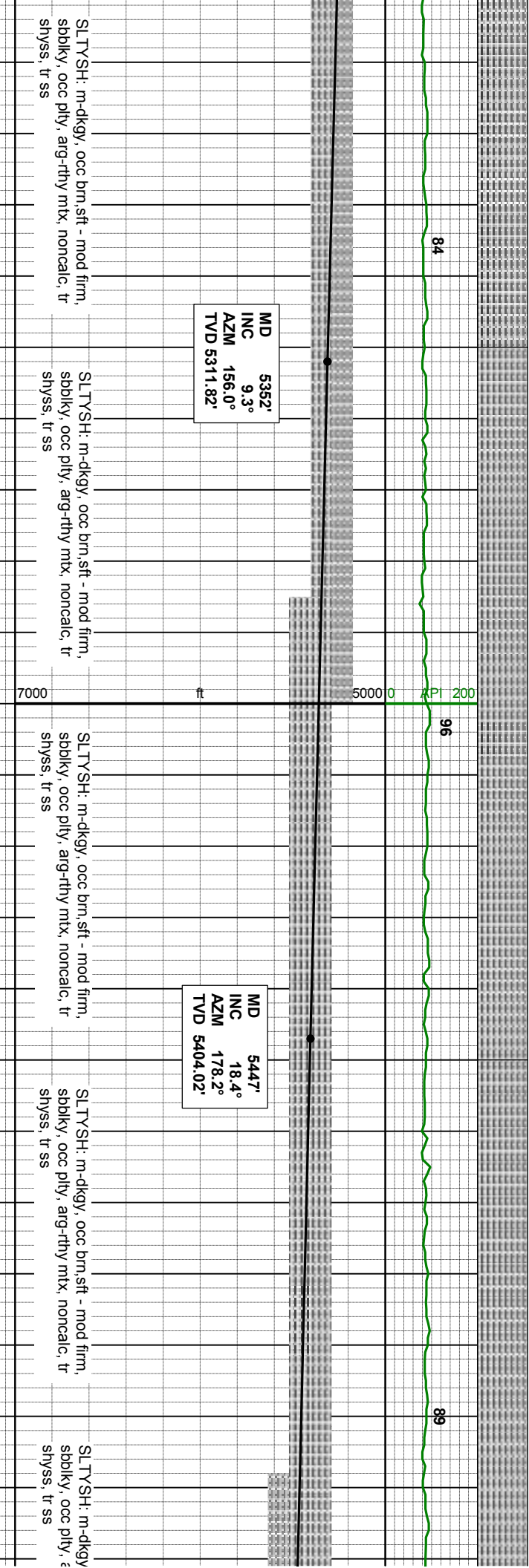
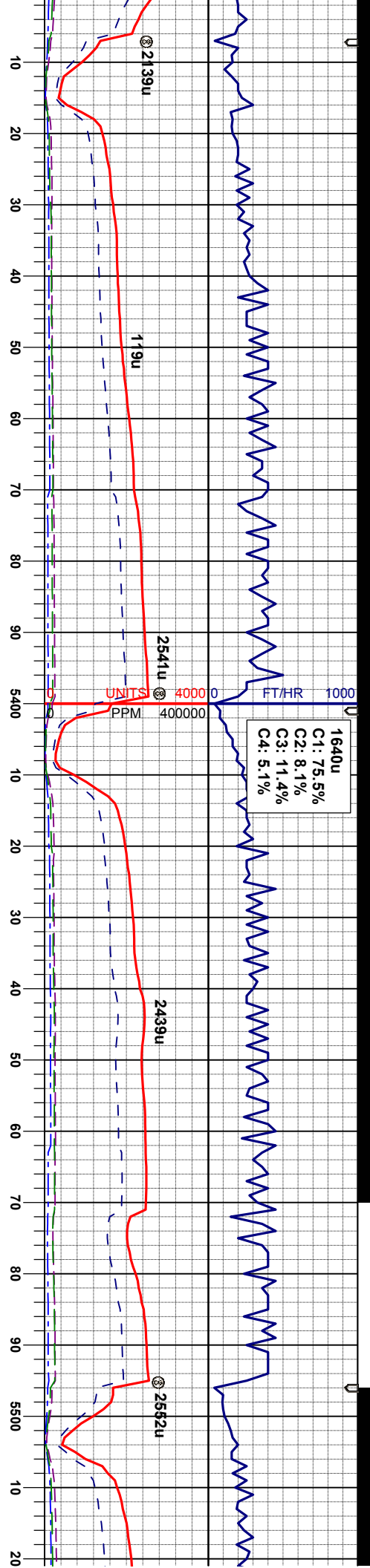


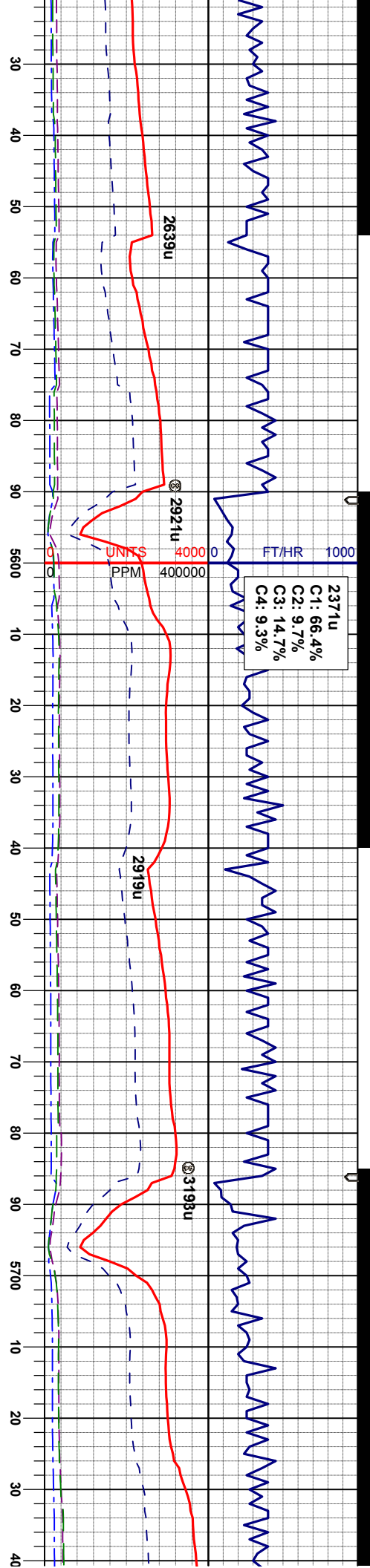
6000

Survey Plan



LITHOLOGIES





MD 5541'
INC 24.7°
AZM 185.4°
TVD 5491.42'

SLTYSH: m-dkgy, occ brn, sft - mod firm, sbbkly, occ pily, arg-rtly mtz, noncalc, tr shys, tr ss

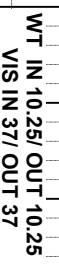
MD 5636'
INC 29.6°
AZM 182.2°
TVD 5575.93'

SLTYSH: m-dkgy, occ brn, sft - mod firm, sbbkly, occ pily, arg-rtly mtz, noncalc, tr shys, tr ss

MD 5732'
INC 33.5°
AZM 179.8°
TVD 5657.73'

SLTYSH: m-dkgy, occ brn, sft - mod firm, sbbkly, occ pily, arg-rtly mtz, noncalc, tr shys, tr ss, tr coal

SLTYSH: m-dkgy, occ brn, sft - mod firm, sbbkly, occ pily, arg-rtly mtz, noncalc, tr shys, tr ss, tr coal



**GAS SCALE
CHANGE**

SHARON SPRINGS
MARKER BED @
5930' MD / 5802'TVD

SLTYSH: m - lt gy, occ dkgy, sft-mod firm, sbblky-pty, rthy-argmtx, trbent, noncalc

SLTYSH: m - It gy, occ dkgy, sft-mod firm,
sbbiky-pity, rthy-argmtx, trbent, noncalc

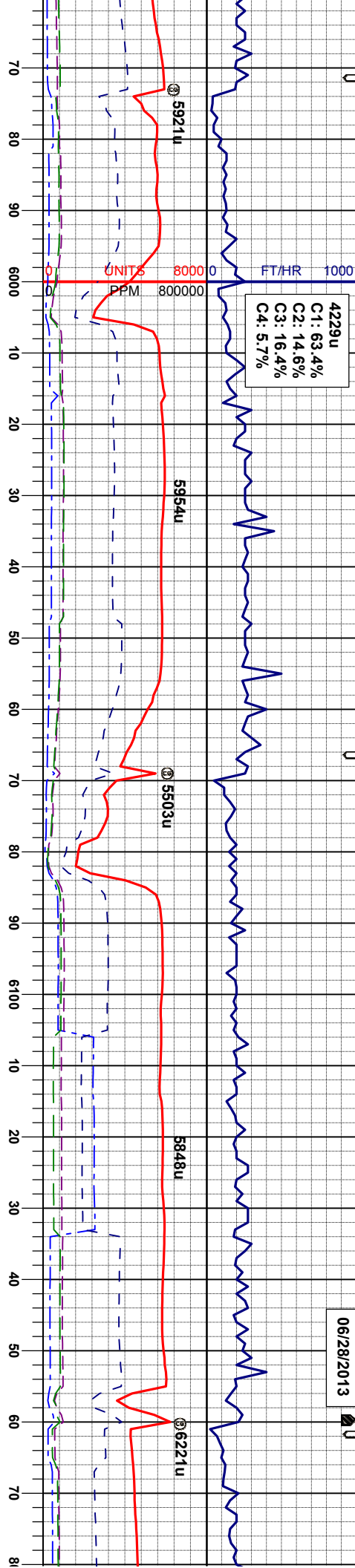
SLTYSH: m - It gy, occ dkgy, sft-mod firm, sbblky-pty, rthy-argmtx, sme bent, noncalc

SL TYSH: m - lt gy, ooc dkgy, sft-mod firm, sbblky-pfly, rthy-aigmxh, sne dent, noncalc
CHK: ltgy, ooc mgy, mod sft - mod firm, spbply-sbblky, rthy tex - mot, v calc
MR: mgy-gyolk, oocdkbm, blyx-spbply, sne fts, mod firm, rthy tex, sl mot, v calc

SLTYSF
sbblky-p
CHK: Itg
sbply-st
MRL: m
sme fis,

06/28/2013

4229u
C1: 63.4%
C2: 14.6%
C3: 16.4%
C4: 5.7%



WT IN 10.35/ OUT 10.35
VIS IN 37/ OUT 37
NIO A CHALK @
5981' MD/ 5832' TVD

i: m - lt gy, occ dkgy, sft-mod firm,
lty, rthy-argmtx, sme bent, noncalic
y, occ mgy, mod sft - mod firm,
sbkly, rthy tex - mot, v calc
gy-gyblk, occdkbrn, blkly-sbpity,
mod firm, rthy tex, sl mot, v calc

MD 6017'
INC 55.6°
AZM 179.4°
TVD 5853.32'

CHK: ltgy, occ mgy, mod sft - mod firm,
sbply-sbkly, rthy tex - mot, v calc
MRL: mgy-gyblk, occdkbrn, blkly-sbpity,
sme fis, mod firm, rthy tex, sl mot, v calc

NIO A MARL @
6099' MD/ 5870' TVD

WT IN 10.60/ OUT 10.65
VIS IN 36/ OUT 35

MD 6112'
INC 60.8°
AZM 178.7°
TVD 5903.37'

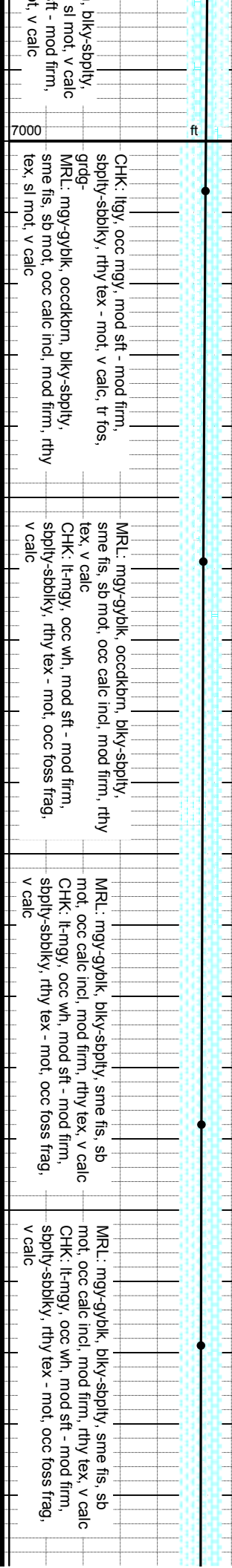
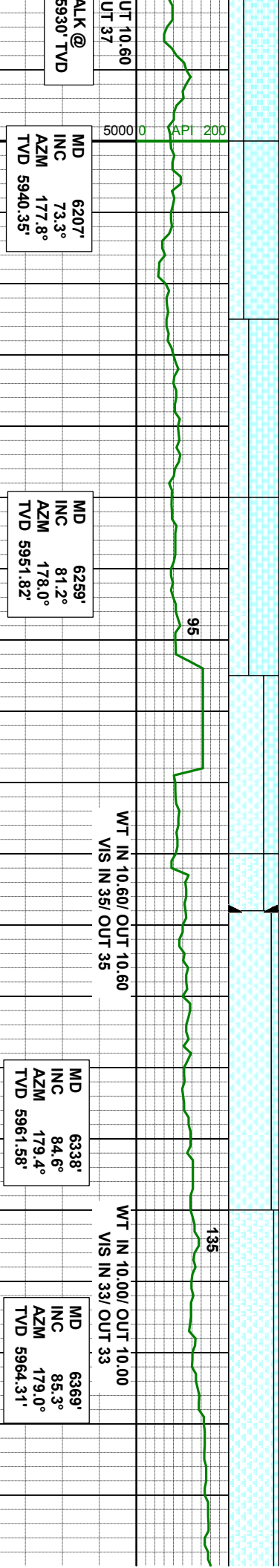
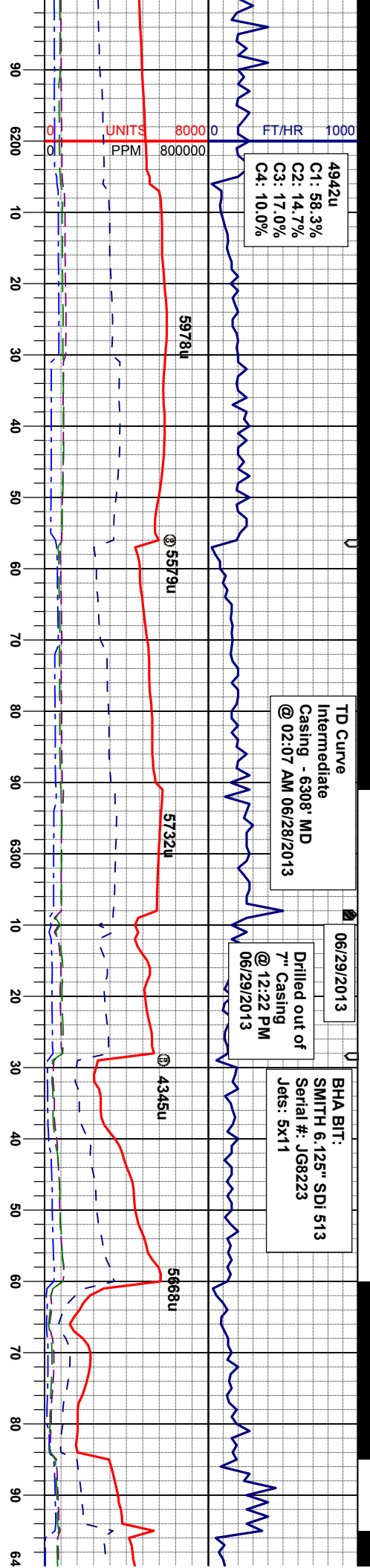
MRL: mgy-gyblk, occdkbrn, blkly-sbpity,
sme fis, mod firm, rthy tex, sl mot, v calc
CHK: ltgy, occ mgy, mod sft - mod firm,
sbply-sbkly, rthy tex - mot, v calc

MD 6157'
INC 66.7°
AZM 178.7°
TVD 5923.26'

NIO B CH/
6178' MD/

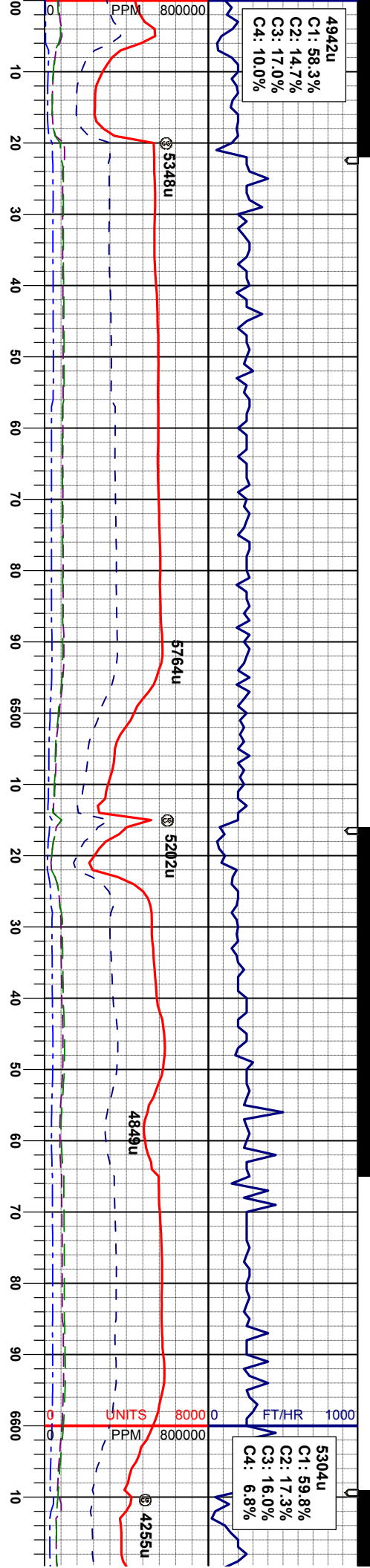
WT IN 10.60/ O
VIS IN 37/ O

MRL: mgy-gyblk, occdkbrn
sme fis, mod firm, rthy tex,
CHK: ltgy, occ mgy, mod s
sbply-sbkly, rthy tex - mc



4942u
C1: 58.3%
C2: 14.7%
C3: 17.0%
C4: 10.0%

5304u
C1: 59.8%
C2: 17.3%
C3: 16.0%
C4: 6.8%



MD 6463'
INC 88.0°
AZM 178.9°
TVD 5969.81'

MD 6556'
INC 89.2°
AZM 179.4°
TVD 5972.08'

WT IN 10.05/ OUT 10.00
VIS IN 35/ OUT 36

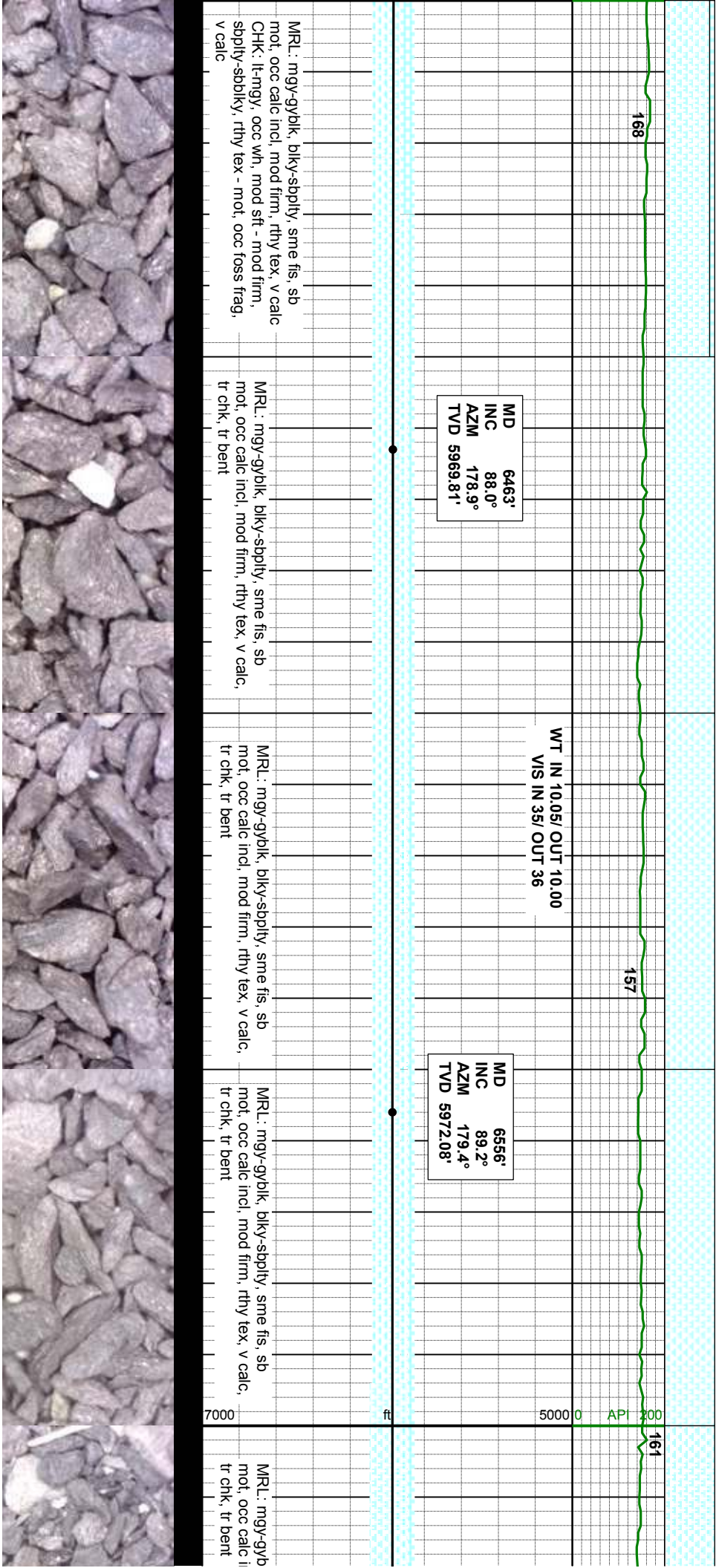
MRL: mgy-gyblk, blkly-sbply, sme fis, sb
mot, occ calc incl, mod firm, rthy tex, v calc
CHK: lt-mgy, occ wh, mod sft - mod firm,
sbply-sbply, rthy tex - mot, occ foss frag,
v calc

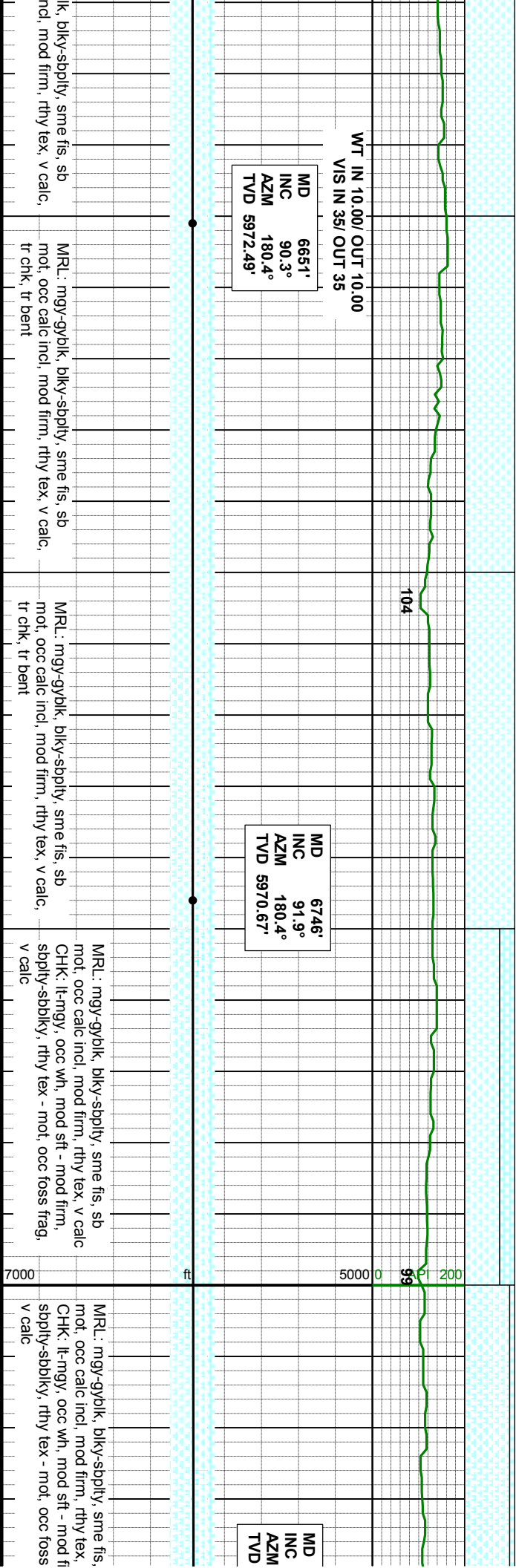
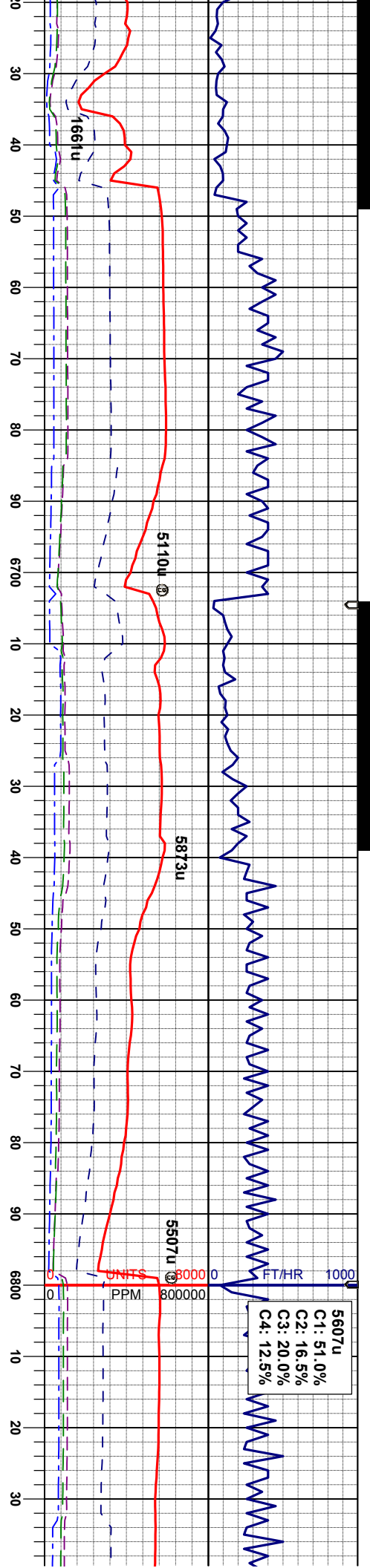
MRL: mgy-gyblk, blkly-sbply, sme fis, sb
mot, occ calc incl, mod firm, rthy tex, v calc,
tr chk, tr bent

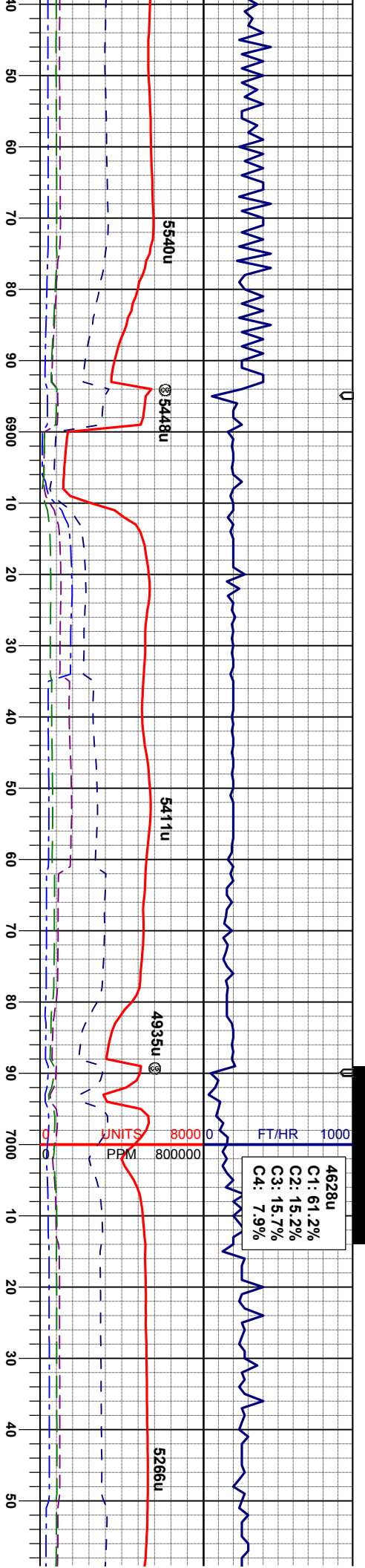
MRL: mgy-gyblk, blkly-sbply, sme fis, sb
mot, occ calc incl, mod firm, rthy tex, v calc,
tr chk, tr bent

MRL: mgy-gyblk, blkly-sbply, sme fis, sb
mot, occ calc incl, mod firm, rthy tex, v calc,
tr chk, tr bent

MRL: mgy-gyb
mot, occ calc i
tr chk, tr bent







6841'
92.3°
180.3°
5967.19'

MD 6936'
INC 92.6°
AZM 180.6°
TVD 5963.13'

MD 7031'
INC 91.4°
AZM 179.9°
TVD 5959.81'

sb
v calc
MRL: mgy-gyblk, blk-y-sbply, sme fis, sb
mot, occ calc incl, mod firm, rthy tex, v calc
CHK: lt-mgy, occ wh, mod sft - mod firm,
sbply-sbply, rthy tex - mot, occ foss frag,
v calc

MRL: mgy-gyblk, blk-y-sbply, sme fis, sb
mot, occ calc incl, mod firm, rthy tex, v calc
CHK: lt-mgy, occ wh, mod sft - mod firm,
sbply-sbply, rthy tex - mot, occ foss frag,
v calc

MRL: mgy-gyblk, blk-y-sbply, sme fis, sb
mot, occ calc incl, mod firm, rthy tex, v calc
CHK: lt-mgy, occ wh, mod sft - mod firm,
sbply-sbply, rthy tex - mot, occ foss frag,
v calc

CHK: lt-mgy, occ wh, mod sft - mod firm,
sbply-sbply, rthy tex - mot, occ foss frag,
v calc
MRL: mgy-gyblk, blk-y-sbply, sme fis, sb
mot, occ calc incl, mod firm, rthy tex, v calc

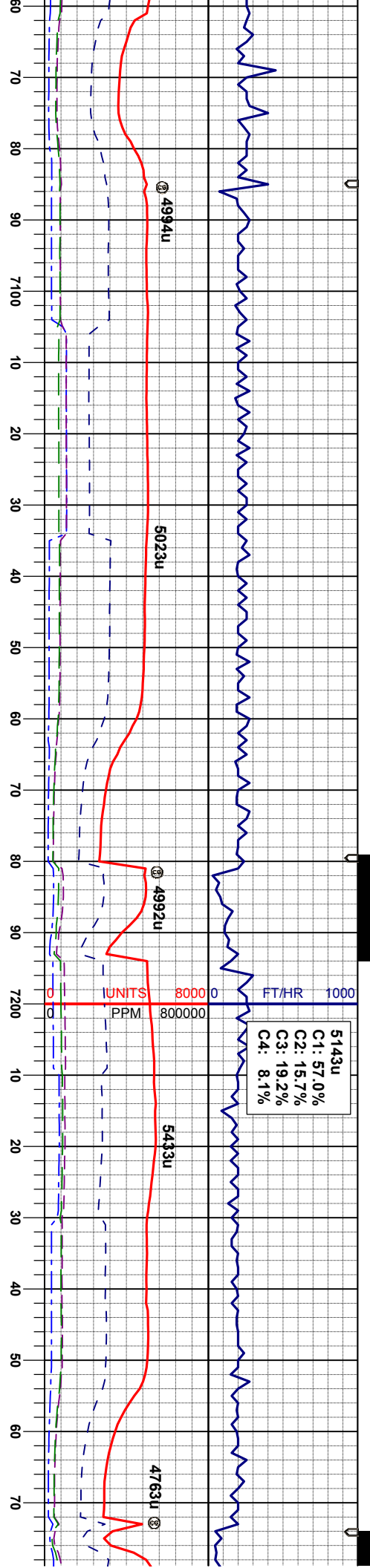
CHK: sbply-
v calc
MRL: i-
mot, o

B MARL

B CHALK

15'

B CHALK



WT IN 10.2/ OUT 10.2
VIS IN 37/ OUT 37

MD 7126'
INC 90.9°
AZM 180.3°
TVD 5957.90'

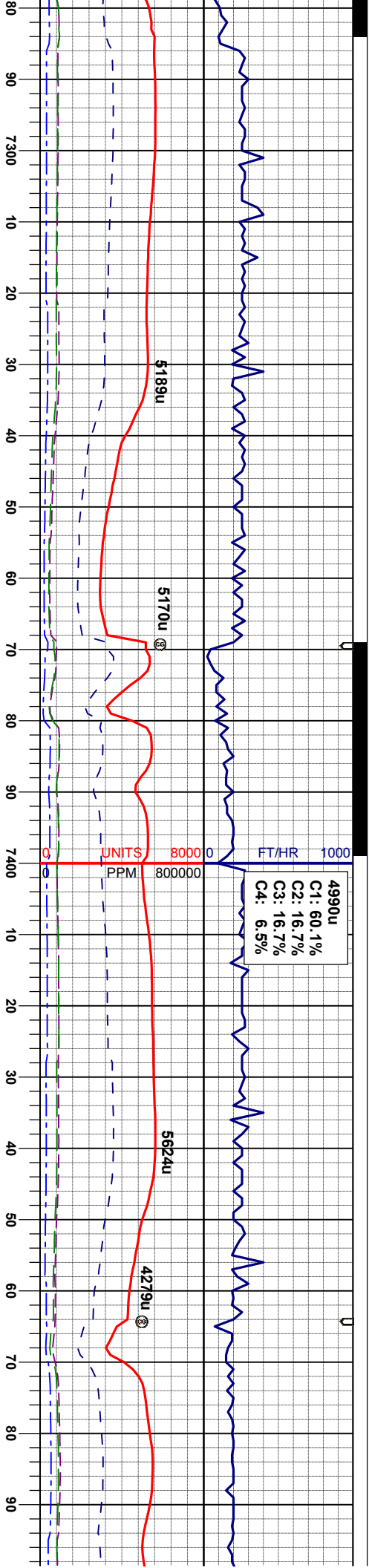
MD 7221'
INC 90.5°
AZM 178.7°
TVD 5956.74'

lt-mgy, occ wh, mod sft - mod firm, sbply, rthy tex - mot, occ foss frag, v calc
CHK: lt-mgy, occ wh, mod sft - mod firm, sbply-sbply, rthy tex - mot, occ foss frag, v calc
MRL: mgy-gyblk, blk-y-sbply, sme fis, sb mot, occ calc incl, mod firm, rthy tex, v calc

lt-mgy, occ wh, mod sft - mod firm, sbply, rthy tex - mot, occ foss frag, v calc
CHK: lt-mgy, occ wh, mod sft - mod firm, sbply-sbply, rthy tex - mot, occ foss frag, v calc
MRL: mgy-gyblk, blk-y-sbply, sme fis, sb mot, occ calc incl, mod firm, rthy tex, v calc

lt-mgy, occ wh, mod sft - mod firm, sbply, rthy tex - mot, occ foss frag, v calc
CHK: lt-mgy, occ wh, mod sft - mod firm, sbply-sbply, rthy tex - mot, occ foss frag, v calc
MRL: mgy-gyblk, blk-y-sbply, sme fis, sb mot, occ calc incl, mod firm, rthy tex, v calc





OUT 10.30
OUT 35

MD 7316'
INC 89.7°
AZM 178.3°
TVD 5956.58'

B CHALK

B MARL

B MARL

B CHALK

WT IN 10.20/ OUT 10.20
VIS IN 35/ OUT 35

MD 7411'
INC 92.9°
AZM 177.5°
TVD 5954.42'

MRL: mgy-gyblk, biky-sbply, sme fis, sb
mot, occ calc incl, mod firm, rthy tex, v calc
CHK: lt-mgy, occ wh, mod sft - mod firm,
sbply-sbply, rthy tex - mot, occ foss frag,
v calc

MRL: mgy-gyblk, biky-sbply, sme fis, sb
mot, occ calc incl, mod firm, rthy tex, v calc
CHK: lt-mgy, occ wh, mod sft - mod firm,
sbply-sbply, rthy tex - mot, occ foss frag,
v calc

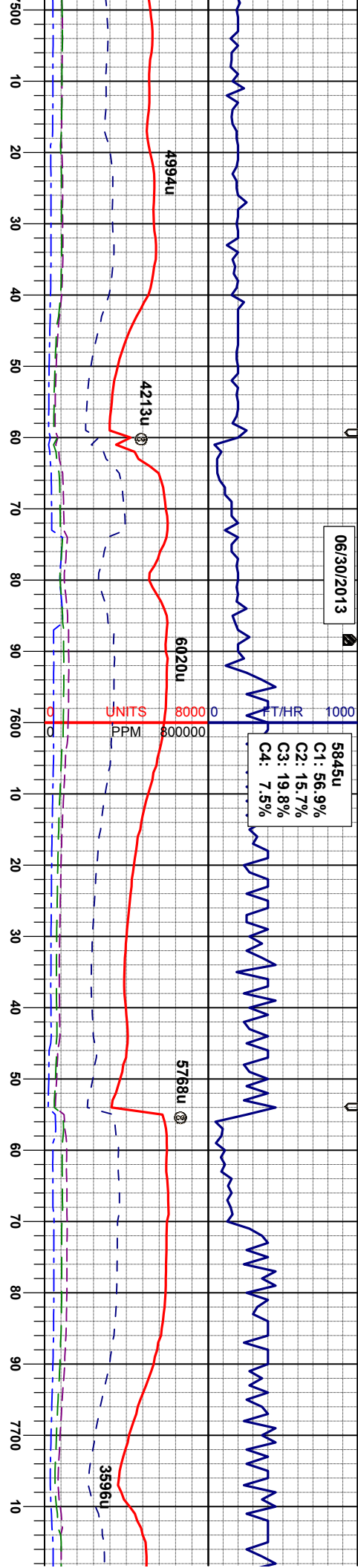
MRL: mgy-gyblk, biky-sbply, sme fis, sb
mot, occ calc incl, mod firm, rthy tex, v calc
CHK: lt-mgy, occ wh, mod sft - mod firm,
sbply-sbply, rthy tex - mot, occ foss frag,
v calc

MRL: mgy-gyblk, biky-sbply, sme fis, sb
mot, occ calc incl, mod firm, rthy tex, v calc
CHK: lt-mgy, occ wh, mod sft - mod firm,
sbply-sbply, rthy tex - mot, occ foss frag,
v calc



5845u

C1: 56.9%
C2: 15.7%
C3: 19.8%
C4: 7.5%



MD	7506'
INC	93.4°
AZM	177.3°
TVD	5949.20'

142

WT IN 10.10/ OUT 10.10
VIS IN 35/ OUT 35

MD	7601'
INC	91.0°
AZM	177.8°
TVD	5945.56'

WT IN 10.10/ OUT 10.10
VIS IN 34/ OUT 34

MD	7695'
INC	89.7°
AZM	178.9°
TVD	5944.98'

191

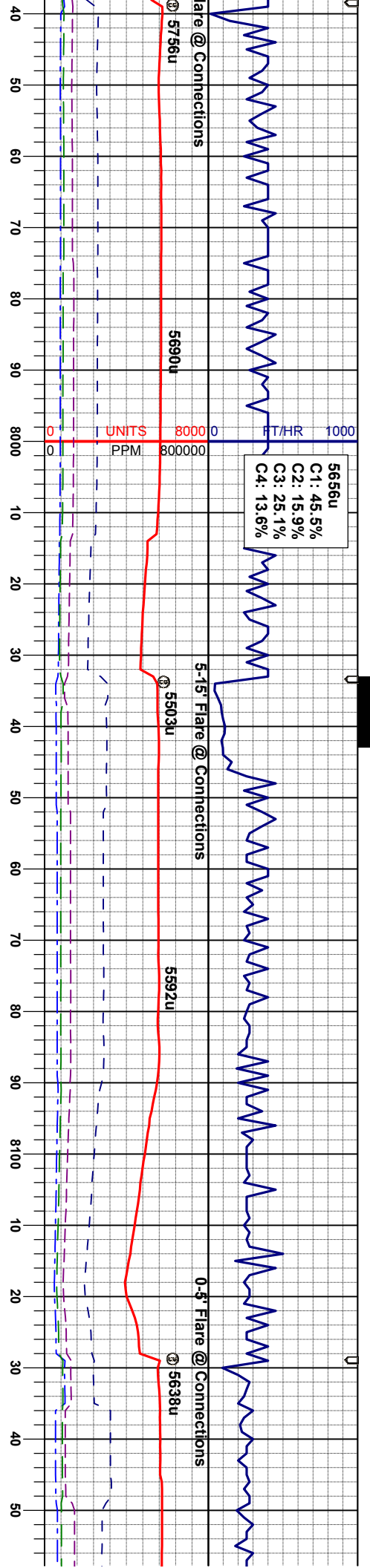
MRL: mgy-gy/bk, biky-sbply, sme fis, sb
mot, occ calc incl, mod firm, rthy tex, v calc
CHK: lt-mgy, occ wh, mod sft - mod firm,
sply-sbply, rthy tex - mot, occ foss frag,
v calc

MRL: mgy-gyblk, blyk-splyt, sme fis, sb
mot, occ calc incl, mod firm, rthy tex, v calc
CHK: lt-mgy, occ wh, mod sft - mod firm,
-supply-sblyk, rthy tex - mot, occ foss frag,
v calc

MR.L: mgy-gyblk, blky-sbply, sme fis, sb
mot, occ calc incl, mod firm, rthy tex, v calc
CHK: lt-mgy, occ wh, mod sft - mod firm,
sbply-sbblky, rthy tex - mot, occ foss frag,
v calc

MIR: mgy-gyblk, biky-sbply, sme fls, sb
mot, occ calc incl, mod firm, rthy tex, v calc
CHK: ll-mgy, occ wh, mod sft - mod firm,
sbply-sbply, rthy tex - mot, occ foss frag,
v calc

MRL: mgy-gyblk
mot, occ calc inc
CHK: lt-mgy, occ
sbply-sbblky, rtr
v calc



MD 7980'
INC 89.7°
AZM 179.8°
TVD 5946.14'

MD 8075'
INC 90.0°
AZM 178.2°
TVD 5946.39'

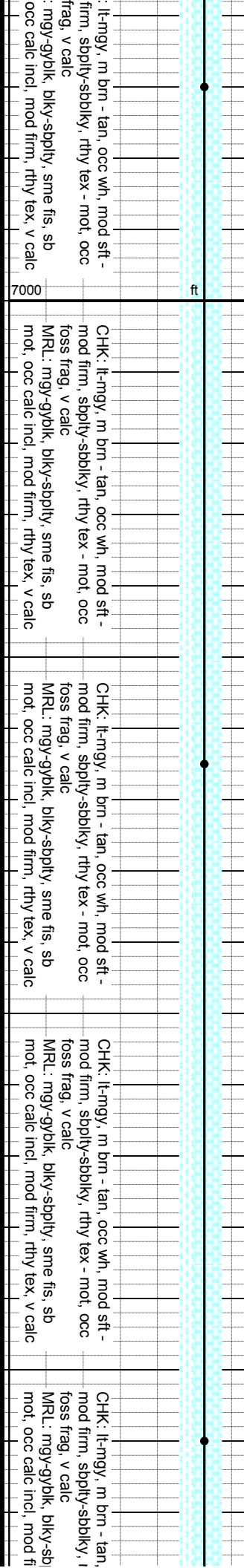
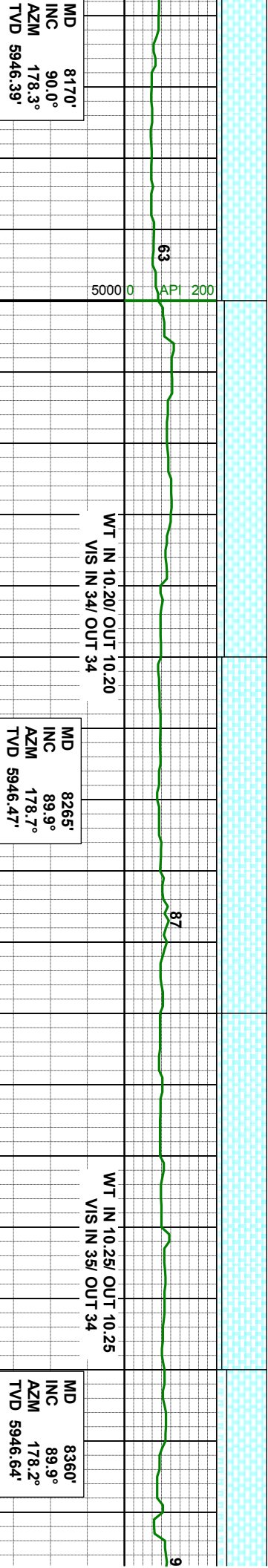
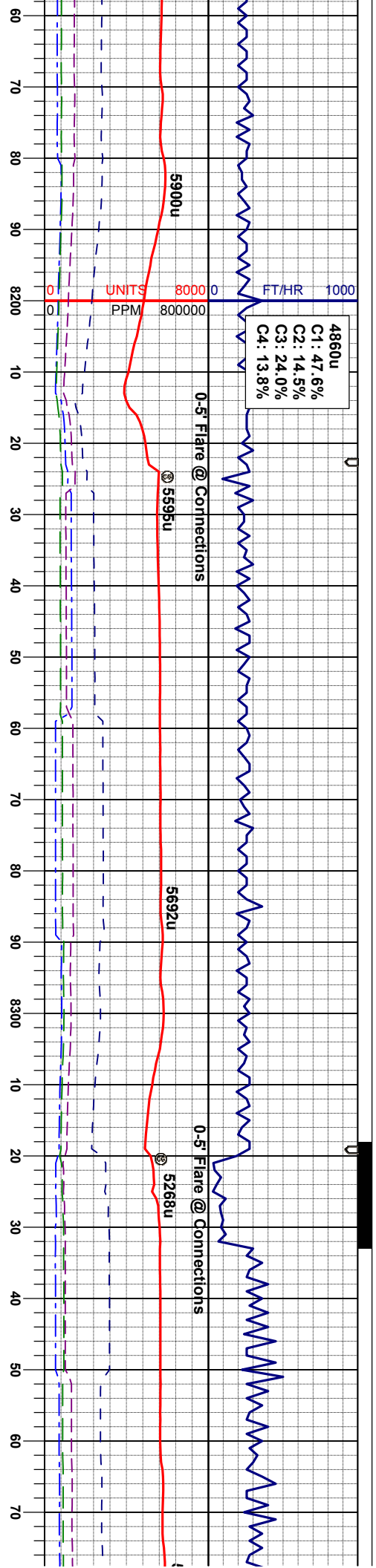
CHK: lt-mgy, occ wh, mod sft - mod firm, sbply-sbdkly, rthy tex - mot, occ foss frag, v calc
MRL: mgy-gyblk, blkly-sbply, sme fis, sb mot, occ calc incl, mod firm, rthy tex, v calc

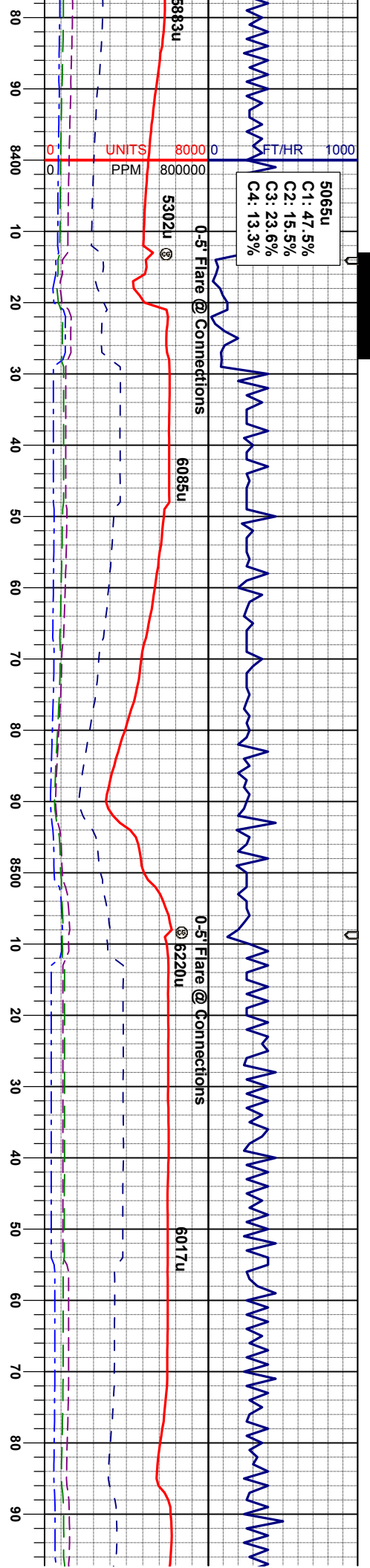
CHK: lt-mgy, occ wh, mod sft - mod firm, sbply-sbdkly, rthy tex - mot, occ foss frag, v calc
MRL: mgy-gyblk, blkly-sbply, sme fis, sb mot, occ calc incl, mod firm, rthy tex, v calc

CHK: lt-mgy, m brn - tan, occ wh, mod sft - mod firm, sbply-sbdkly, rthy tex - mot, occ foss frag, v calc
MRL: mgy-gyblk, blkly-sbply, sme fis, sb mot, occ calc incl, mod firm, rthy tex, v calc

CHK: mod firm, sbply-sbdkly, rthy tex - mot, occ foss frag, v calc
MRL: mod firm, sbply-sbdkly, rthy tex - mot, occ foss frag, v calc







MD 8455'
INC 90.8°
AZM 177.5°
TVD 5946.06'

MD 8550'
INC 90.8°
AZM 177.6°
TVD 5944.73'

WT IN 10.25/ OUT 10.20
VIS IN 36/ OUT 36

occ wh, mod sft -
rthy tex - mot, occ
CHK: lt-mgy, m brn - tan, occ wh, mod sft -
mod firm, sbply-sbdky, rthy tex - mot, occ
foss frag, v calc
MRL: mgy-gyblk, bkly-sbply, sme fis, sb
mot, occ calc incl, mod firm, rthy tex, v calc

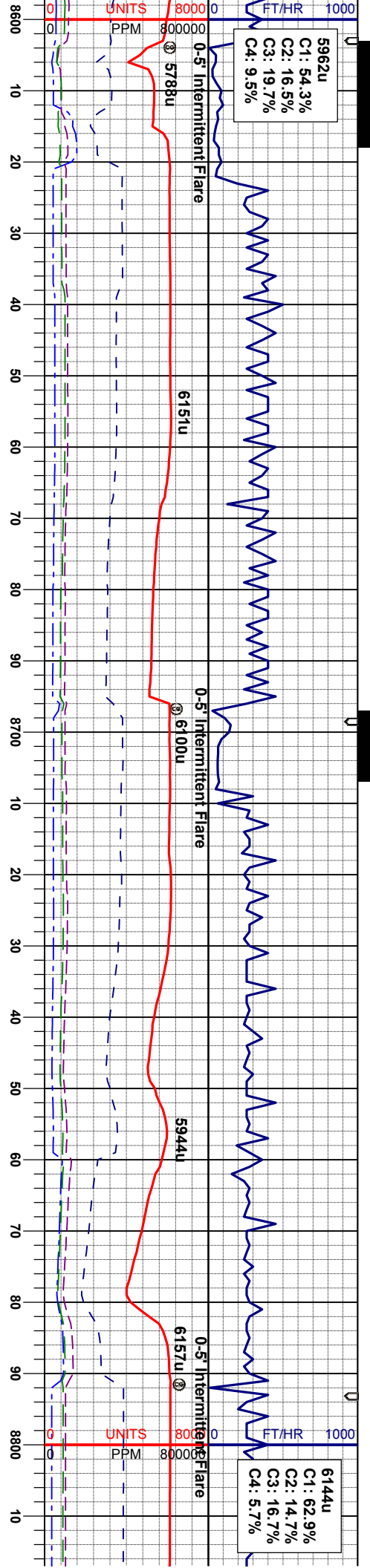
occ wh, mod sft -
rthy tex - mot, occ
CHK: lt-mgy, m brn - tan, occ wh, mod sft -
mod firm, sbply-sbdky, rthy tex - mot, occ
foss frag, v calc
MRL: mgy-gyblk, bkly-sbply, sme fis, sb
mot, occ calc incl, mod firm, rthy tex, v calc

occ wh, mod sft -
rthy tex - mot, occ
CHK: lt-mgy, m brn - tan, occ wh, mod sft -
mod firm, sbply-sbdky, rthy tex - mot, occ
foss frag, v calc
MRL: mgy-gyblk, bkly-sbply, sme fis, sb
mot, occ calc incl, mod firm, rthy tex, v calc

occ wh, mod sft -
rthy tex - mot, occ
CHK: lt-mgy, m brn - tan, occ wh, mod sft -
mod firm, sbply-sbdky, rthy tex - mot, occ
foss frag, v calc
MRL: mgy-gyblk, bkly-sbply, sme fis, sb
mot, occ calc incl, mod firm, rthy tex, v calc

occ wh, mod sft -
rthy tex - mot, occ
CHK: lt-mgy, m brn - tan, occ wh, mod sft -
mod firm, sbply-sbdky, rthy tex - mot, occ
foss frag, v calc
MRL: mgy-gyblk, bkly-sbply, sme fis, sb
mot, occ calc incl, mod firm, rthy tex, v calc





MD 8644'
INC 90.0°
AZM 178.2°
TVD 5944.08'

WT IN 10.20/ OUT 10.10
VIS IN 39/ OUT 39

MD 8739'
INC 88.7°
AZM 178.5°
TVD 5945.15'

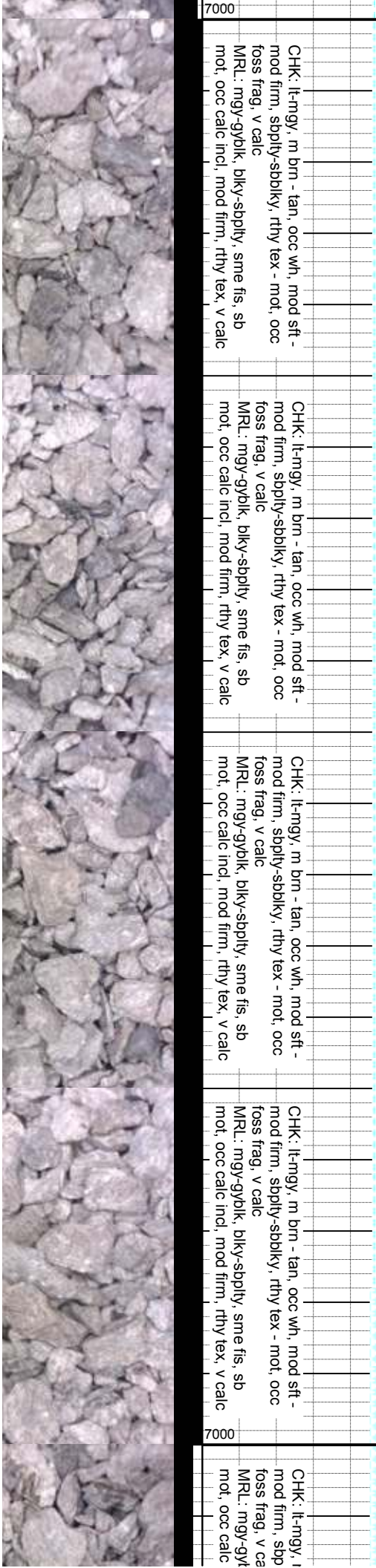
CHK: lt-mgy, m brn - tan, occ wh, mod sft -
mod firm, sbply-sbblky, rthy tex - mot, occ
foss frag, v calc
MRL: mgy-gyblk, blk-y-sbply, sme fis, sb
mot, occ calc incl, mod firm, rthy tex, v calc

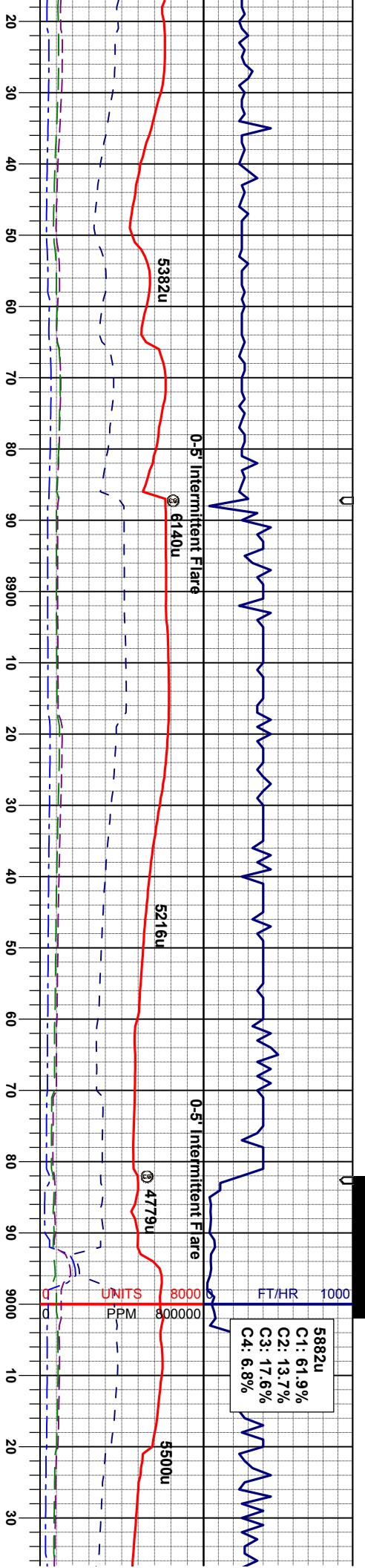
CHK: lt-mgy, m brn - tan, occ wh, mod sft -
mod firm, sbply-sbblky, rthy tex - mot, occ
foss frag, v calc
MRL: mgy-gyblk, blk-y-sbply, sme fis, sb
mot, occ calc incl, mod firm, rthy tex, v calc

CHK: lt-mgy, m brn - tan, occ wh, mod sft -
mod firm, sbply-sbblky, rthy tex - mot, occ
foss frag, v calc
MRL: mgy-gyblk, blk-y-sbply, sme fis, sb
mot, occ calc incl, mod firm, rthy tex, v calc

CHK: lt-mgy, m brn - tan, occ wh, mod sft -
mod firm, sbply-sbblky, rthy tex - mot, occ
foss frag, v calc
MRL: mgy-gyblk, blk-y-sbply, sme fis, sb
mot, occ calc incl, mod firm, rthy tex, v calc

CHK: lt-mgy, m brn - tan, occ wh, mod sft -
mod firm, sbply-sbblky, rthy tex - mot, occ
foss frag, v calc
MRL: mgy-gyblk, blk-y-sbply, sme fis, sb
mot, occ calc incl, mod firm, rthy tex, v calc





MD 8834'
INC 88.6°
AZM 178.2°
TVD 5947.39'

WT IN 10.15/ OUT 10.15
VIS IN 38/ OUT 38

MD 8929'
INC 88.1°
AZM 178.3°
TVD 5950.13'

WT IN 10.15/ OUT 10.15
VIS IN 36/ OUT 36

MD 9024'
INC 90.7°
AZM 177.5°
TVD 5951.12'

m brn - tan, occ wh, mod sft -
ly-sbdkly, rthy tex - mot, occ
calc

CHK: lt-mgy, m brn - tan, occ wh, mod sft -
mod firm, sbply-sbdkly, rthy tex - mot, occ
foss frag, v calc
MRL: mgy-gyblk, blkly-sbply, sme fis, sb
mot, occ calc incl, mod firm, rthy tex, v calc

CHK: lt-mgy, m brn - tan, occ wh, mod sft -
mod firm, sbply-sbdkly, rthy tex - mot, occ
foss frag, v calc, grdg-
MRL: mgy-gyblk, blkly-sbply, sme fis, sb
mot, occ calc incl, mod firm, rthy tex, v calc

CHK: lt-mgy, m brn - tan, occ wh, mod sft -
mod firm, sbply-sbdkly, rthy tex - mot, occ
foss frag, v calc, grdg-
MRL: mgy-gyblk, blkly-sbply, sme fis, sb
mot, occ calc incl, mod firm, rthy tex, v calc

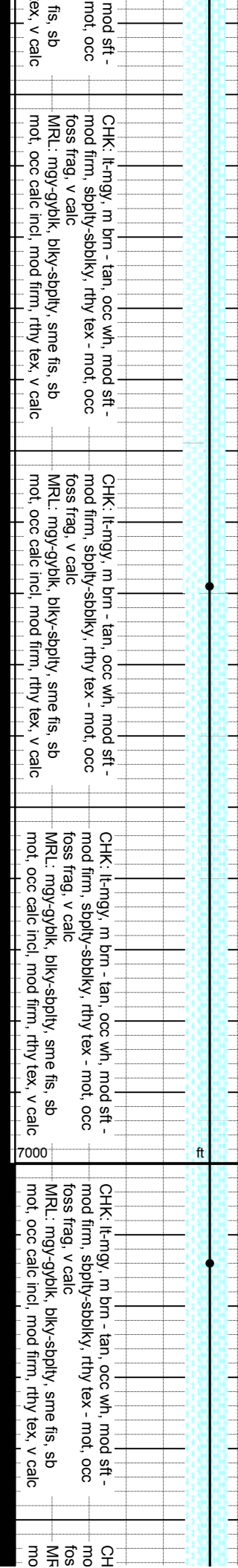
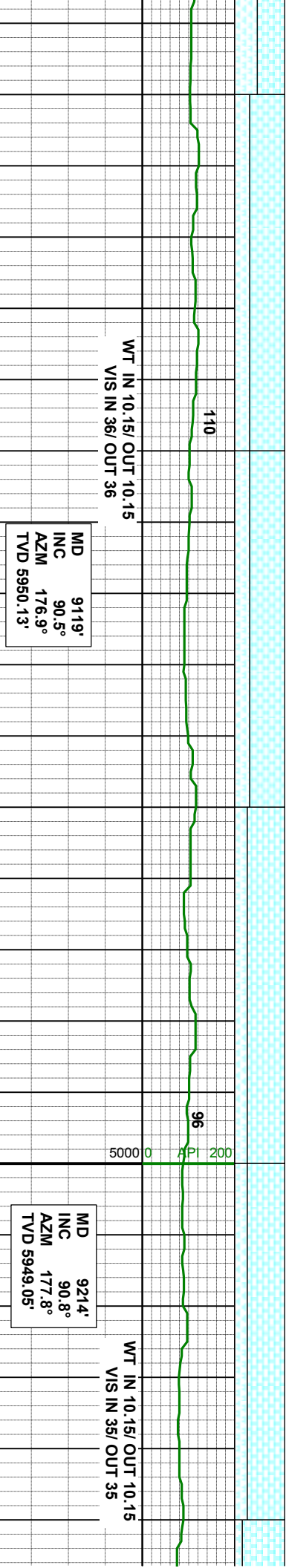
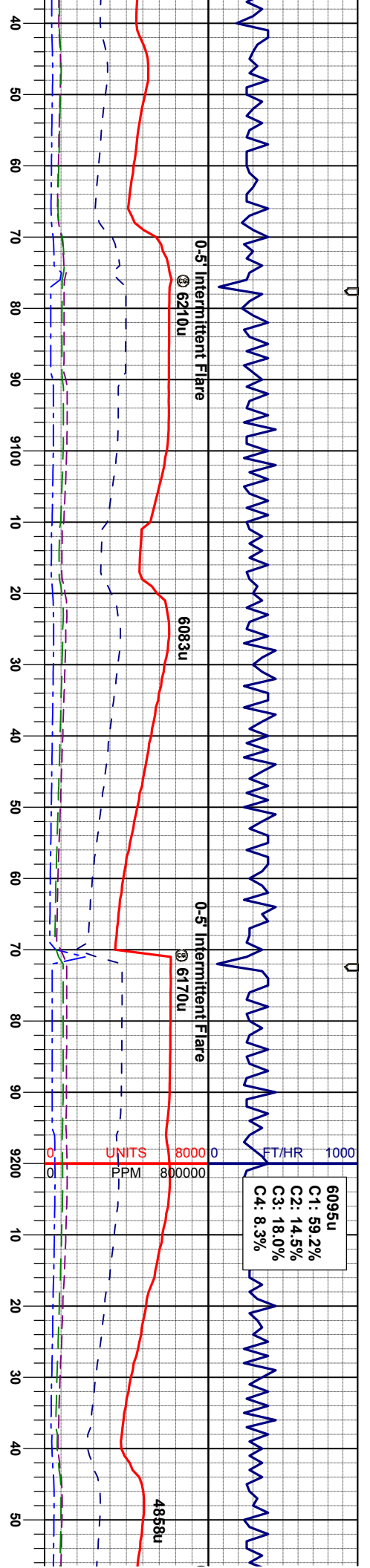
CHK: lt-mgy, m brn - tan, occ wh,
mod firm, sbply-sbdkly, rthy tex -
foss frag, v calc, grdg-
MRL: mgy-gyblk, blkly-sbply, sme
mot, occ calc incl, mod firm, rthy t

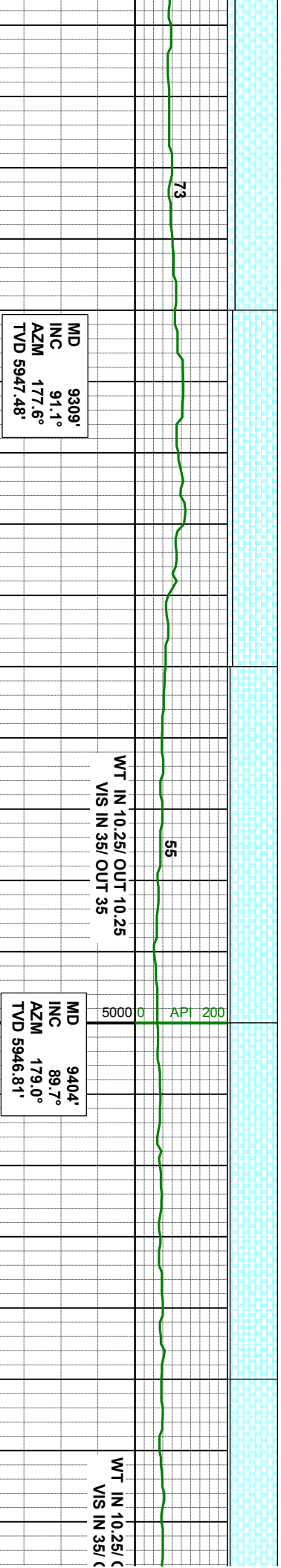
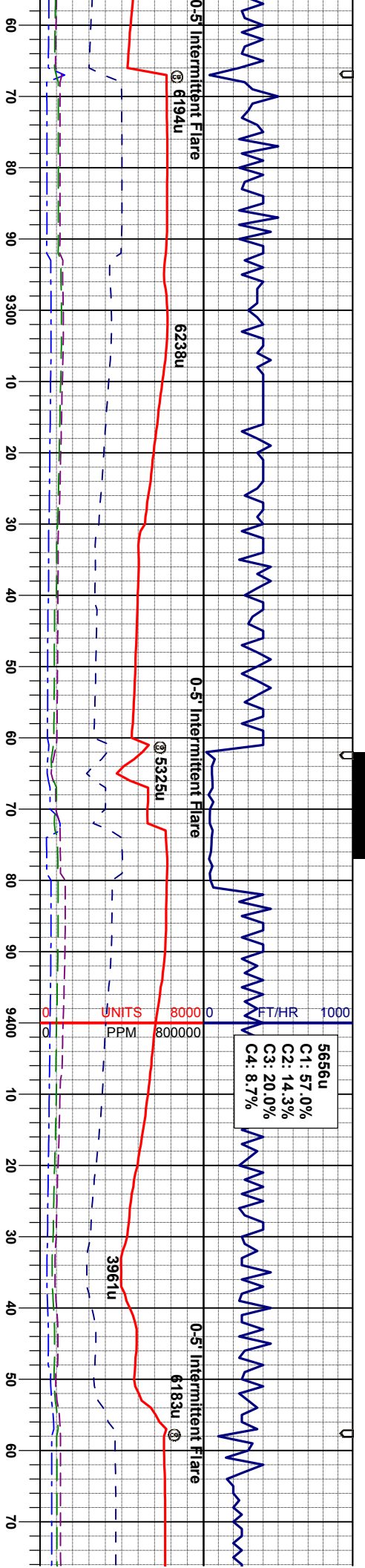
ft

API 200

90







CHK: lt-mgy, m brn - tan, occ wh, mod sft - mod firm, sbply-sbdkly, rthy tex - mot, occ foss frag, v calc

CHK: lt-mgy, tan, occ wh, mod sft - mod firm, sbply-sbdkly, rthy tex - mot, occ foss frag, v calc

MR.L: mgy-gyblk, bky-sbply, sme fis, sb mot, occ calc incl, mod firm, rthy tex, v calc

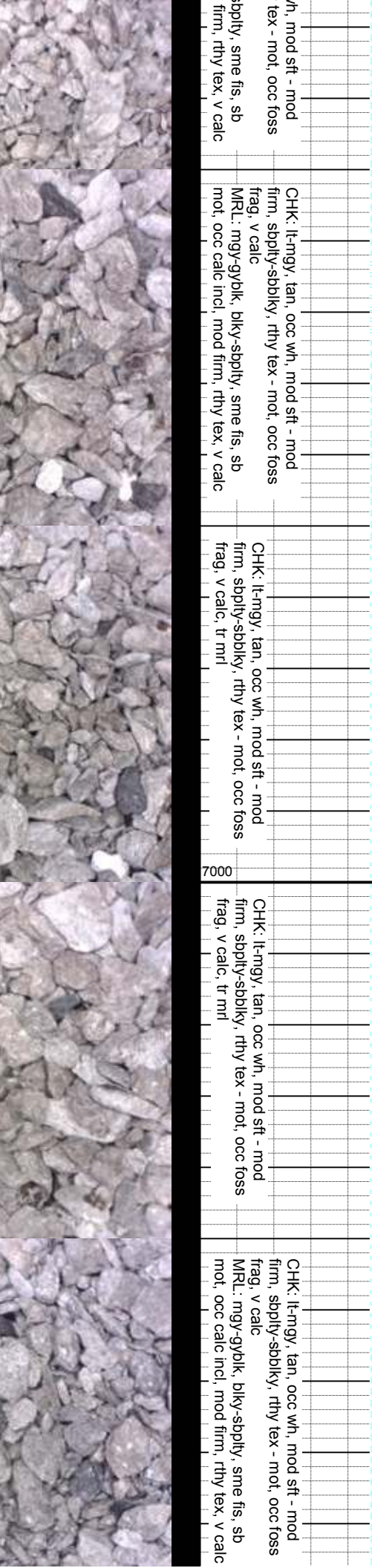
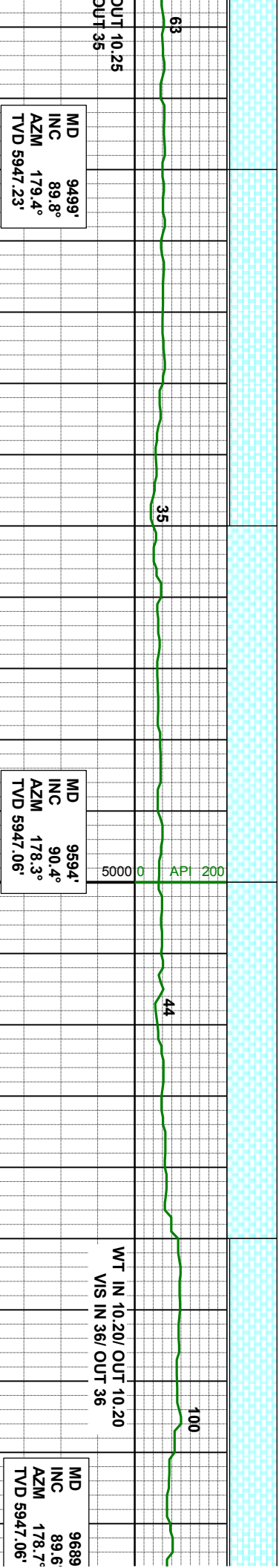
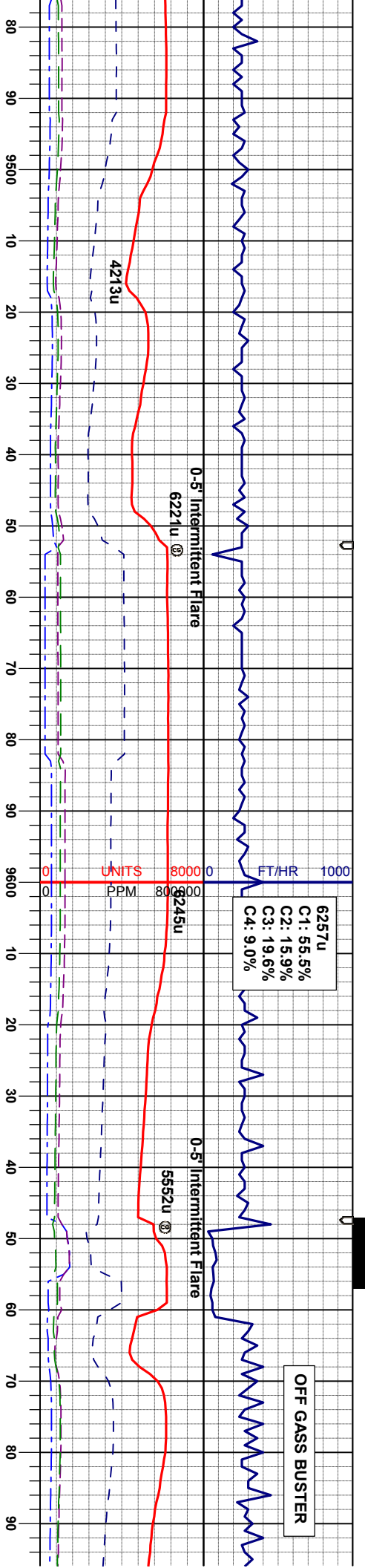
CHK: lt-mgy, tan, occ wh, mod sft - mod firm, sbply-sbdkly, rthy tex - mot, occ foss frag, v calc

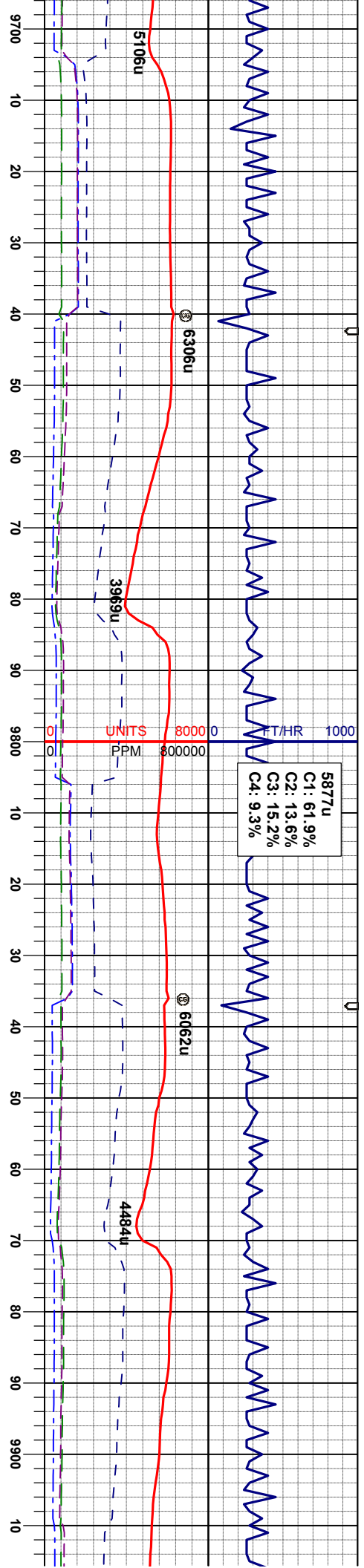
MR.L: mgy-gyblk, bky-sbply, sme fis, sb mot, occ calc incl, mod firm, rthy tex, v calc

CHK: lt-mgy, tan, occ wh, mod sft - mod firm, sbply-sbdkly, rthy tex - mot, occ foss frag, v calc

MR.L: mgy-gyblk, bky-sbply, sme fis, sb mot, occ calc incl, mod firm, rthy tex, v calc







MD 9783'
INC 89.3°
AZM 178.7°
TVD 5947.96'

MD 9879'
INC 89.2°
AZM 178.5°
TVD 5949.22'

CHK: lt-mgy, tan, occ wh, mod sft - mod firm, sbply-sbblky, rthy tex - mot, occ foss frag, v calc
MRL: mgy-gyblk, blkly-sbply, sme fis, sb mot, occ calc incl, mod firm, rthy tex, v calc

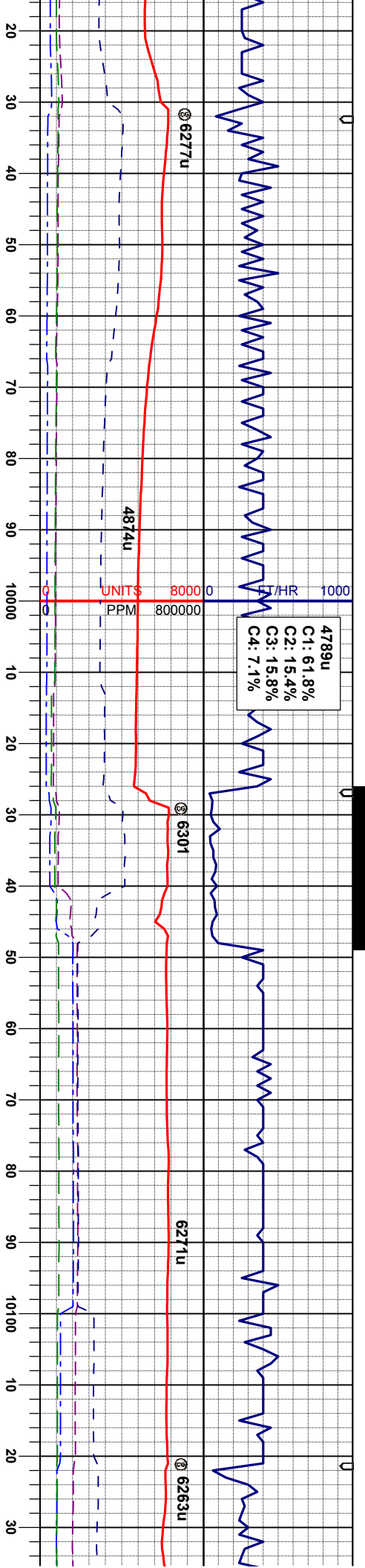
MRL: mgy-gyblk, blkly-sbply, sme fis, sb mot, occ calc incl, mod firm, rthy tex, v calc
CHK: lt-mgy, tan, occ wh, mod sft - mod firm, sbply-sbblky, rthy tex - mot, occ foss frag, v calc

MRL: mgy-gyblk, blkly-sbply, sme fis, sb mot, occ calc incl, mod firm, rthy tex, v calc
CHK: lt-mgy, tan, occ wh, mod sft - mod firm, sbply-sbblky, rthy tex - mot, occ foss frag, v calc

MRL: mgy-gyblk, blkly-sbply, sme fis, sb mot, occ calc incl, mod firm, rthy tex, v calc
CHK: lt-mgy, tan, occ wh, mod sft - mod firm, sbply-sbblky, rthy tex - mot, occ foss frag, v calc

MRL: mgy-gyblk, blkly-sbply, sme fis, sb mot, occ calc incl, mod firm, rthy tex, v calc
CHK: lt-mgy, tan, occ wh, mod sft - mod firm, sbply-sbblky, rthy tex - mot, occ foss frag, v calc





4789u
C1: 61.8%
C2: 15.4%
C3: 15.8%
C4: 7.1%

MD 9973.3'
INC 89.0°
AZM 179.0°
TVD 5950.70'

MD 10068.3'
INC 89.4°
AZM 178.0°
TVD 5952.02'

WT IN 10.25/ OUT 10.25
VIS IN 36/ OUT 36

MRLL: mgy-gyblk, biky-sbply, sme fis, sb
incl, mod firm, rthy tex, v calc
tan, occ wh, mod sft - mod
firm, sbply-sbiky, rthy tex - mot, occ foss
frag, v calc

MRLL: mgy-gyblk, biky-sbply, sme fis, sb
incl, mod firm, rthy tex, v calc
tan, occ wh, mod sft - mod
firm, sbply-sbiky, rthy tex - mot, occ foss
frag, v calc

MRLL: mgy-gyblk, biky-sbply, sme fis, sb
incl, mod firm, rthy tex, v calc
tan, occ wh, mod sft - mod
firm, sbply-sbiky, rthy tex - mot, occ foss
frag, v calc

MRLL: mgy-gyblk, biky-sbply, sme fis, sb
incl, mod firm, rthy tex, v calc
tan, occ wh, mod sft - mod
firm, sbply-sbiky, rthy tex - mot, occ foss
frag, v calc



