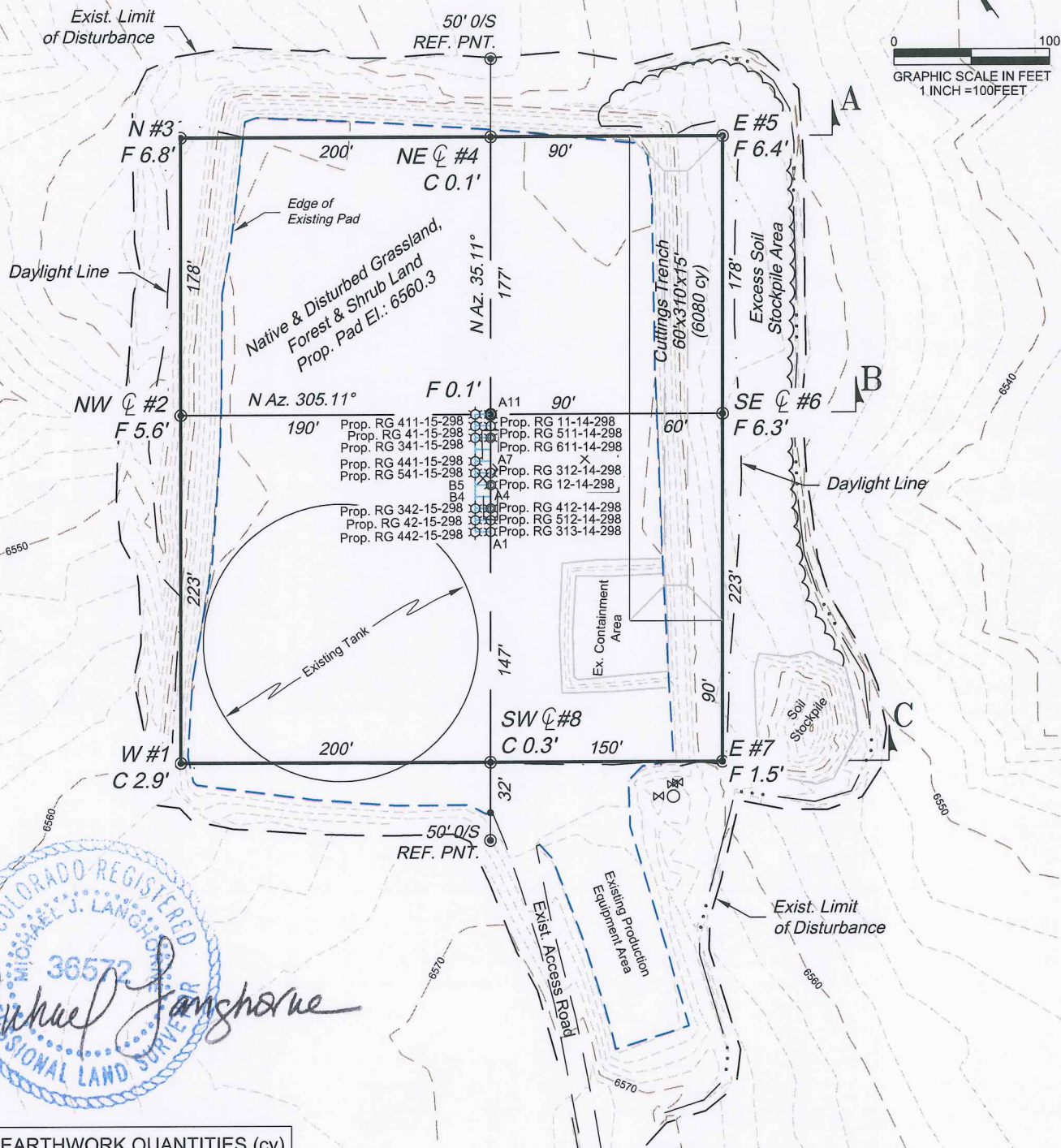


Section 14
T. 2 S., R. 98 W.
6th. P.M.



ESTIMATED EARTHWORK QUANTITIES (cy)				
ITEM	CUT	FILL	TOPSOIL	EXCESS
PAD	2260	2725	0	-465
PIT	6080			6040
TOTALS	8340	2725	0	5615

*NOTE:

- 1.) 10% SWELL FACTOR APPLIED TO CUT VOLUME.
- 2.) TOPSOIL VOLUME BASED ON 12" SOIL DEPTH.
- 3.) TOTAL DISTURBED AREA = ± 5.60 ac.
- 4.) USE EXCESS PIT MATERIAL TO COMPLETE PAD IF NECESSARY.

REVISED: 10/24/13

Construction Plan Prepared for:
WPX ENERGY WPX Energy Rocky Mountain, LLC

136 East Third Street
Rifle, Colorado 81650
Ph. (970) 625-2720
Fax (970) 625-2773



BOOKCLIFF
Survey Services, Inc.

SCALE: 1" = 100'
DATE: 10/1/13
PLAT: 2 of 7
PROJECT: Highlands
DFT: cws

RG 12-14-298 Drill Pad - Plat 2
CONSTRUCTION LAYOUT