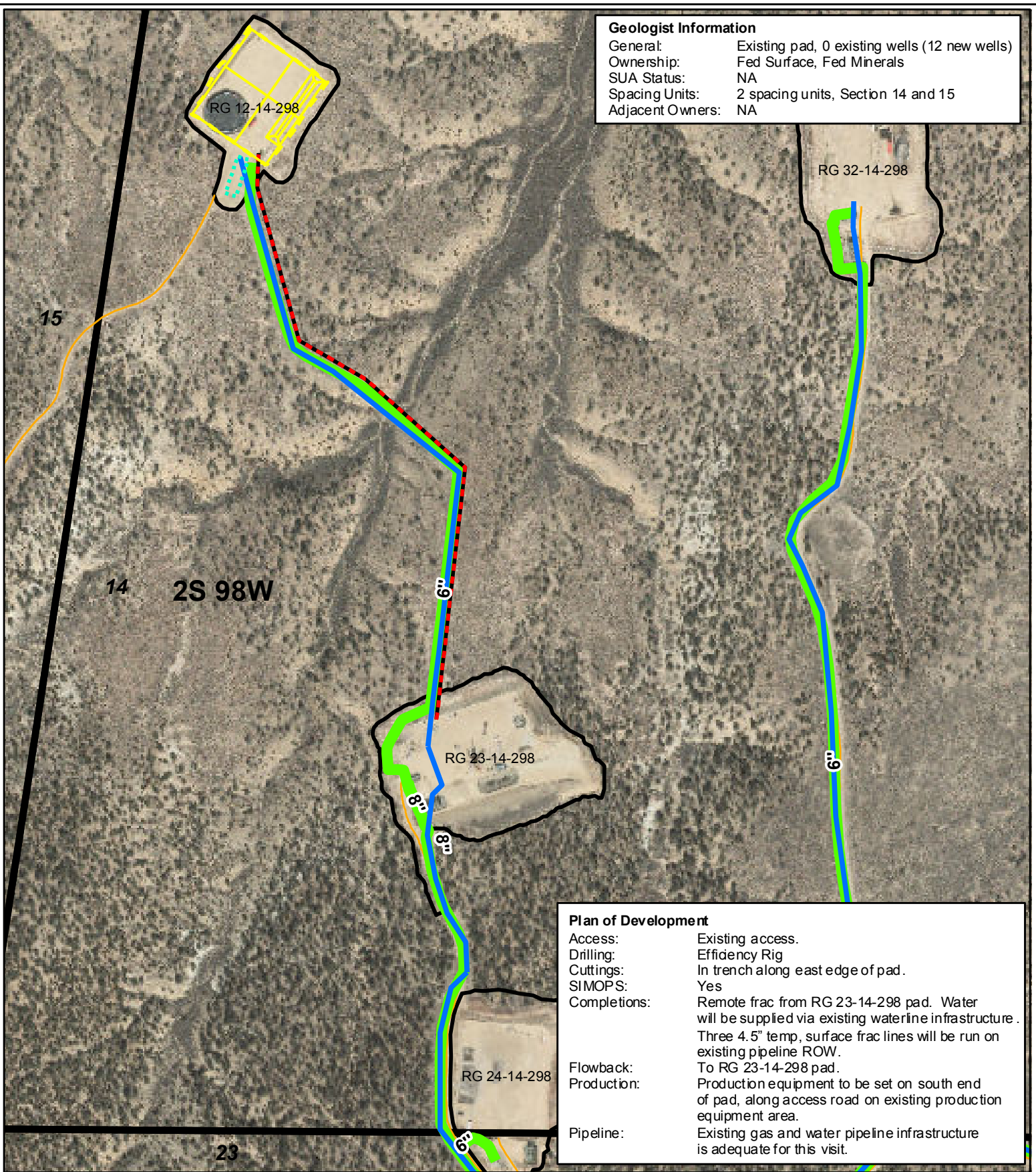


**Geologist Information**

General: Existing pad, 0 existing wells (12 new wells)  
 Ownership: Fed Surface, Fed Minerals  
 SUA Status: NA  
 Spacing Units: 2 spacing units, Section 14 and 15  
 Adjacent Owners: NA



**Plan of Development**

Access: Existing access.  
 Drilling: Efficiency Rig  
 Cuttings: In trench along east edge of pad.  
 SIMOPS: Yes  
 Completions: Remote frac from RG 23-14-298 pad. Water will be supplied via existing waterline infrastructure. Three 4.5" temp, surface frac lines will be run on existing pipeline ROW.  
 Flowback: To RG 23-14-298 pad.  
 Production: Production equipment to be set on south end of pad, along access road on existing production equipment area.  
 Pipeline: Existing gas and water pipeline infrastructure is adequate for this visit.

**Legend**

- Proposed Production Equipment Area
- Proposed Daylight Line
- Proposed Pad or Pit
- Frac Lines (Temp, Surface)
- Existing Water Line (Dual 4" Flexpipe)
- Williams Midstream Gas Line
- Road
- Existing Pad

