

HALLIBURTON

WPX ENERGY ROCKY MOUNTAIN LLC-EBUS

**SG 41-22
GARND VAILLEY
Garfield County , Colorado**

Cement Surface Casing

26-Aug-2013

Post Job Report

The Road to Excellence Starts with Safety

Sold To #: 300721	Ship To #: 3097021	Quote #:	Sales Order #: 900693466
Customer: WPX ENERGY ROCKY MOUNTAIN LLC-EBUS	Customer Rep:		
Well Name: SG	Well #: 41-22	API/UWI #:	
Field: GARND VAILLEY	City (SAP): PARACHUTE	County/Parish: Garfield	State: Colorado
Contractor: CYCLONE 17	Rig/Platform Name/Num: 17		
Job Purpose: Cement Surface Casing			
Well Type: Development Well	Job Type: Cement Surface Casing		
Sales Person: GANT, RICHARD	Srv Supervisor: KEANE, JOHN	MBU ID Emp #: 486519	

Job Personnel

HES Emp Name	Exp Hrs	Emp #	HES Emp Name	Exp Hrs	Emp #	HES Emp Name	Exp Hrs	Emp #
BANKS, BRENT A	0.0	371353	KEANE, JOHN Donovon	0.0	486519	SMITH, DUSTIN Michael	0.0	418015

Equipment

HES Unit #	Distance-1 way	HES Unit #	Distance-1 way	HES Unit #	Distance-1 way	HES Unit #	Distance-1 way
10551730C	60 mile	10867322	60 mile	10998512	60 mile	11259881	60 mile
11808829	60 mile						

Job Hours

Date	On Location Hours	Operating Hours	Date	On Location Hours	Operating Hours	Date	On Location Hours	Operating Hours

TOTAL Total is the sum of each column separately

Job				Job Times			
Formation Name				Date	Time	Time Zone	
Formation Depth (MD)	Top	Bottom		Called Out	26 - Aug - 2013	11:30	MST
Form Type		BHST		On Location	26 - Aug - 2013	15:45	MST
Job depth MD	1254. ft	Job Depth TVD	1254. ft	Job Started	26 - Aug - 2013	20:33	MST
Water Depth		Wk Ht Above Floor	4. ft	Job Completed	26 - Aug - 2013	21:28	MST
Perforation Depth (MD)	From	To		Departed Loc	26 - Aug - 2013	22:30	MST

Well Data

Description	New / Used	Max pressure psig	Size in	ID in	Weight lbm/ft	Thread	Grade	Top MD ft	Bottom MD ft	Top TVD ft	Bottom TVD ft
OPEN HOLE				13.5				.	1265.	.	1265.
9.625 IN SURFACE CASING	Unknown		9.625	9.001	32.3		H-40	.	1254.6	.	1254.6

Tools and Accessories

Type	Size	Qty	Make	Depth	Type	Size	Qty	Make	Depth	Type	Size	Qty	Make
Guide Shoe					Packer					Top Plug			
Float Shoe					Bridge Plug					Bottom Plug			
Float Collar					Retainer					SSR plug set			
Insert Float										Plug Container			
Stage Tool										Centralizers			

Miscellaneous Materials

Gelling Agt	Conc	Surfactant	Conc	Acid Type	Qty	Conc	%
Treatment Fld	Conc	Inhibitor	Conc	Sand Type	Size	Qty	

Fluid Data

Stage/Plug #: 1									
Fluid #	Stage Type	Fluid Name	Qty	Qty uom	Mixing Density lbm/gal	Yield ft ³ /sk	Mix Fluid Gal/sk	Rate bbl/min	Total Mix Fluid Gal/sk

Stage/Plug #: 1

HALLIBURTON***Cementing Job Summary***

Stage/Plug #: 1									
Fluid #	Stage Type	Fluid Name	Qty	Qty uom	Mixing Density lbm/gal	Yield ft ³ /sk	Mix Fluid Gal/sk	Rate bbl/min	Total Mix Fluid Gal/sk
1	Fresh Water Spacer		20.00	bbl	.	.0	.0	.0	
2	VariCem GJI Lead Cement	VARICEM (TM) CEMENT (452009)	150.0	sacks	12.3	2.38	13.75		13.75
	13.75 Gal	FRESH WATER							
3	VariCem GJ1 Tail Cement	VERSACEM (TM) SYSTEM (452010)	160.0	sacks	12.8	2.11	11.75		11.75
	11.75 Gal	FRESH WATER							
4	Fresh Water Displacement		95.00	bbl	.	.0	.0	.0	
Calculated Values		Pressures		Volumes					
Displacement		Shut In: Instant		Lost Returns		Cement Slurry		Pad	
Top Of Cement		5 Min		Cement Returns		Actual Displacement		Treatment	
Frac Gradient		15 Min		Spacers		Load and Breakdown		Total Job	
Rates									
Circulating		Mixing		Displacement		Avg. Job			
Cement Left In Pipe	Amount	47.3 ft	Reason	Shoe Joint					
Frac Ring # 1 @	ID	Frac ring # 2 @	ID	Frac Ring # 3 @	ID	Frac Ring # 4 @	ID		
The Information Stated Herein Is Correct				Customer Representative Signature					

The Road to Excellence Starts with Safety

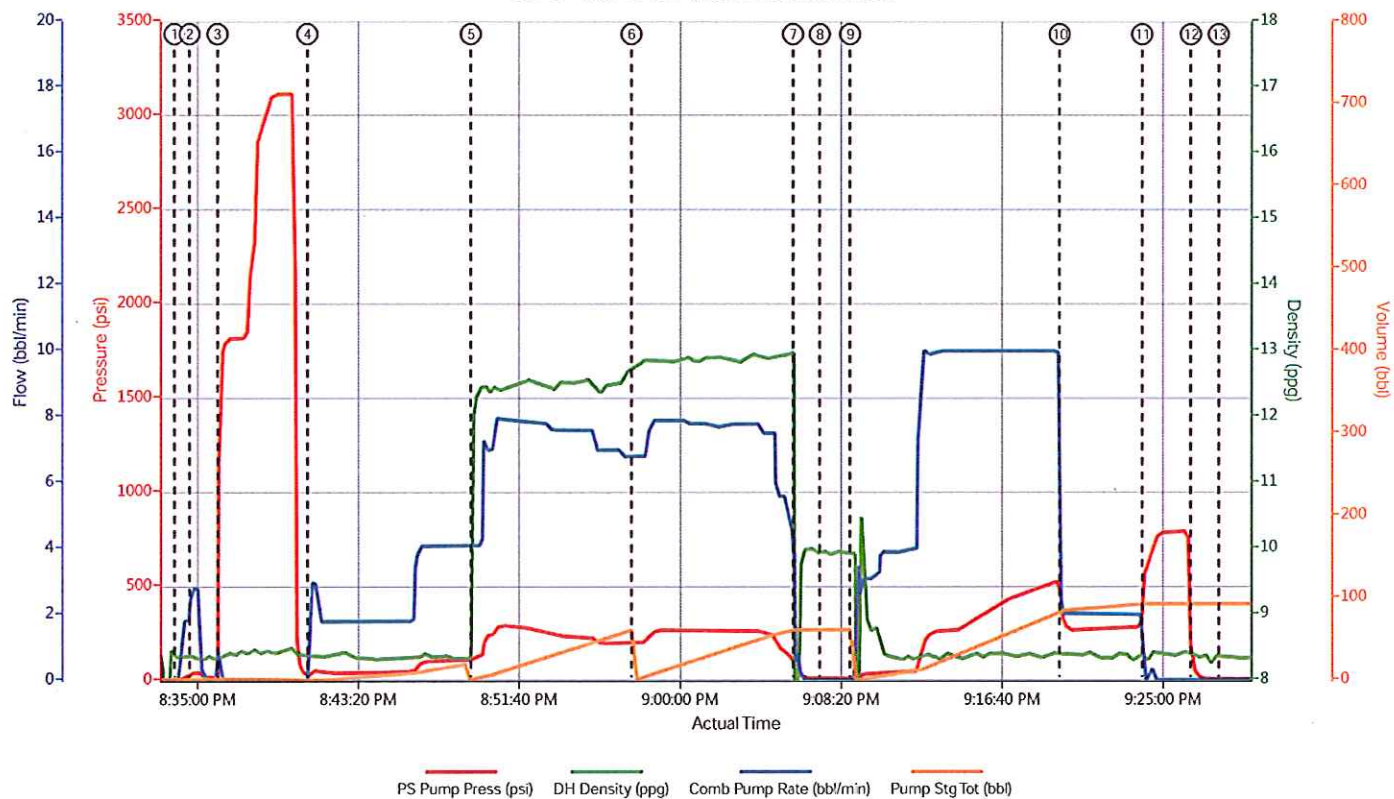
Sold To #: 300721	Ship To #: 3097021	Quote #:	Sales Order #: 900693466
Customer: WPX ENERGY ROCKY MOUNTAIN LLC-EBUS	Customer Rep:		
Well Name: SG	Well #: 41-22	API/UWI #:	
Field: GARND VAILLEY	City (SAP): PARACHUTE	County/Parish: Garfield	State: Colorado
Legal Description:			
Lat:		Long:	
Contractor: CYCLONE 17	Rig/Platform Name/Num: 17		
Job Purpose: Cement Surface Casing	Ticket Amount:		
Well Type: Development Well	Job Type: Cement Surface Casing		
Sales Person: GANT, RICHARD	Srvc Supervisor: KEANE, JOHN	MBU ID Emp #: 486519	

Activity Description	Date/Time	Cht #	Rate bbl/ min	Volume bbl		Pressure psig		Comments
				Stage	Total	Tubing	Casing	
Call Out	08/26/2013 11:30							
Pre-Convoy Safety Meeting	08/26/2013 14:20							WITH HES
Arrive At Loc	08/26/2013 15:45							RIG PULLING DRILL PIPE UPON HES ARRIVAL
Assessment Of Location Safety Meeting	08/26/2013 15:55							WITH HES
Pre-Rig Up Safety Meeting	08/26/2013 18:30							WITH HES
Rig-Up Equipment	08/26/2013 18:45							
Pre-Job Safety Meeting	08/26/2013 20:16							WITH HES, WPX AND CYCLONE 17
Start Job	08/26/2013 20:33							TP 1254.57 FT, TD 1265 FT, SHOE 43.57 FT, HOLE 13.5 IN, CSG 9.625 IN 32.3 LB/FT H-40, MWT 10.3 LB/GAL, RIG CIRCULATING AT 13.4 BBL/MIN
Pump Water	08/26/2013 20:34		2	2			53.0	FILL LINES
Test Lines	08/26/2013 20:36							LOW TEST AT 1819 PSI, HIGH TEST AT 3112 PSI, PRESSURE HOLDING
Pump Spacer	08/26/2013 20:40		4	20			163.0	FRESH WATER
Activity Description	Date/Time	Cht #	Rate bbl/ min	Volume bbl		Pressure psig		Comments
				Stage	Total	Tubing	Casing	

Cementing Job Log

Pump Lead Cement	08/26/2013 20:49		8	63.6			240.0	MIXED AT 12.3LB/GAL, 150 SKS, 2.38 FT3/SK, 13.75 GAL/SK, DENSITY VERIFIED USING PRESSURIZED MUD SCALES
Pump Tail Cement	08/26/2013 20:57		8	60			278.0	MIXED AT 12.8 LB/GAL, 160 SKS, 2.11 FT3/SK, 11.75 GAL/SK, DENSITY VERIFIED USING PRESSURIZED MUD SCALES
Shutdown	08/26/2013 21:05							
Drop Plug	08/26/2013 21:07							PLUG LAUNCHED
Pump Displacement	08/26/2013 21:08		10	85			517.0	FRESH WATER
Slow Rate	08/26/2013 21:19		2	10			275.0	SLOWED AT 85 BBL AWAY
Bump Plug	08/26/2013 21:24		2				313.0	PLUG BUMPED AT CALCULATED DISPLACEMENT
Check Floats	08/26/2013 21:26							FLOATS HOLDING, .5 BBL RETURNED TO THE TRUCK
End Job	08/26/2013 21:28							GOOD CIRCULATION THROUGHOUT THE JOB, PIPE WAS STATIC THROUGHOUT THE JOB, NO DERRICK CHARGE, NO ADD HOURS CHARGED, RIG USED 80 LBS OF SUGAR, 20 BBL OF CEMENT CIRCULATED TO SURFACE
Post-Job Safety Meeting (Pre Rig-Down)	08/26/2013 21:35							WITH HES
Rig-Down Equipment	08/26/2013 21:40							
Pre-Convoy Safety Meeting	08/26/2013 22:20							WITH HES
Crew Leave Location	08/26/2013 22:30							
Comment	08/26/2013 22:31							THANKS FOR USING HALLIBURTON, JOHN KEANE AND CREW

WPX - SG-41-22- 9.625 IN. SURFACE



- Start Job
- Fill Lines
- Test Lines
- Fresh Water Spacer
- Pump Lead Cement
- Pump Tail Cement
- Shutdown
- Drop Top Plug
- Pump Displacement
- Slow Rate
- Bump Plug
- Check Floats
- End Job

▼ Halliburton | iCem Service®

Created 2013-08-26 20:09:58 , Version:1.4.96

Edit

Customer : WPX ENERGY ROCKY MOUNTAIN LLC-
EBUS

Representative : AL DUNIHO

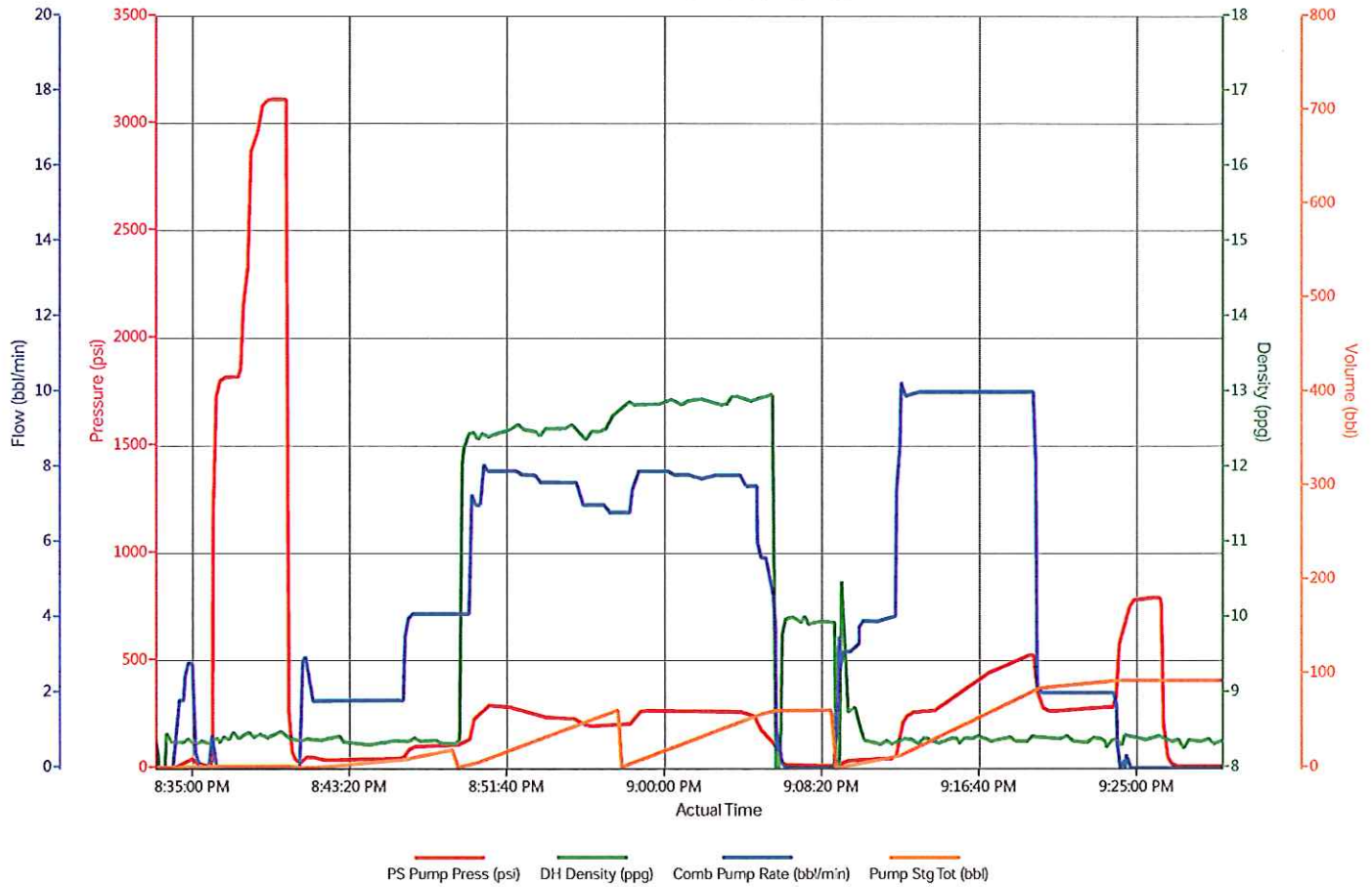
Job Date : 8/26/2013 8:11:15 PM

Sales Order # : 900693466

Well : SG-41-22

SUPERVISOR / ELITE : JOHN KEANE / BRENT BANKS
2

WPX - SG-41-22- 9.625 IN. SURFACE



▼ Halliburton | ICem Service®

Created 2013-08-26 20:09:58 , Version:1.4.96

Edit

Customer : WPX ENERGY ROCKY MOUNTAIN LLC-
EBUS

Job Date : 8/26/2013 8:11:15 PM

Well : SG-41-22

Representative : AL DUNIHO

Sales Order # : 900693466

SUPERVISOR / ELITE : JOHN KEANE / BRENT BANKS
2

HALLIBURTON

Water Analysis Report

Company: WPX
Submitted by: JOHN KEANE
Attention: CHUCK ROSS
Lease: SG
Well #: 41-22

Date: 8/26/2013
Date Rec.: 8/26/2013
S.O.#: 900693466
Job Type: SURFACE

Specific Gravity	<i>MAX</i>	1
pH	<i>8</i>	7.6
Potassium (K)	<i>5000</i>	100 Mg / L
Calcium (Ca)	<i>500</i>	120 Mg / L
Iron (FE2)	<i>300</i>	3 Mg / L
Chlorides (Cl)	<i>3000</i>	500 Mg / L
Sulfates (SO ₄)	<i>1500</i>	<200 Mg / L
Chlorine (Cl ₂)		0 Mg / L
Temp	<i>40-80</i>	68 Deg
Total Dissolved Solids		520 Mg / L

Respectfully: JOHN KEANE

Title: CEMENTING SUPERVISOR

Location: Grand Junction, CO

NOTICE:

This report is limited to the described sample tested. Any person using or relying on this report agrees that Halliburton shall not be liable for any loss or damage whether due to act or omission resulting from such report or its

Sales Order #: 900693466	Line Item: 10	Survey Conducted Date: 8/27/2013
Customer: WPX ENERGY ROCKY MOUNTAIN LLC-EBUS		Job Type (BOM): CMT SURFACE CASING BOM
Customer Representative: AL DUNIHO		API / UWI: (leave blank if unknown) AFEYKCJIDLKZAJE4AAA
Well Name: SG		Well Number: 41-22
Well Type: Development Well	Well Country: United States of America	
H2S Present:	Well State: Colorado	Well County: Garfield

Dear Customer,

We hope that you were satisfied with the service quality of this job performed by Halliburton. It is the aim of our management and service personnel to deliver equipment and service of a standard unmatched in the service sector of the energy industry.

Please take the time to let us know if our performance met with your satisfaction. Please be as critical as possible to ensure we constantly improve our service. Your comments are of great value to us and are intended for the exclusive use of Halliburton.

CUSTOMER SATISFACTION SURVEY

CATEGORY	CUSTOMER SATISFACTION RESPONSE	
Survey Conducted Date	The date the survey was conducted	8/27/2013
Survey Interviewer	The survey interviewer is the person who initiated the survey.	JOHN KEANE (HB58526)
Customer Participation	Did the customer participate in this survey? (Y/N)	Yes
Customer Representative	Enter the Customer representative name	AL DUNIHO
HSE	Was our HSE performance satisfactory? Circle Y or N	Yes
Equipment	Were you satisfied with our Equipment? Circle Y or N	Yes
Personnel	Were you satisfied with our people? Circle Y or N	Yes
Customer Comment	Customer's Comment	GOD JOB MEN I

CUSTOMER SIGNATURE

Sales Order #: 900693466	Line Item: 10	Survey Conducted Date: 8/27/2013
Customer: WPX ENERGY ROCKY MOUNTAIN LLC-EBUS		Job Type (BOM): CMT SURFACE CASING BOM
Customer Representative: AL DUNIHO		API / UWI: (leave blank if unknown) AFEYKCJIDLKZAJE4AAA
Well Name: SG		Well Number: 41-22
Well Type: Development Well	Well Country: United States of America	
H2S Present:	Well State: Colorado	Well County: Garfield

KEY PERFORMANCE INDICATORS

General	
Survey Conducted Date The date the survey was conducted	8/27/2013

Cementing KPI Survey	
Type of Job Select the type of job. (Cementing or Non-Cementing)	0
Select the Maximum Deviation range for this Job What is the highest deviation for the job you just completed? This may not be the maximum well deviation.	Vertical
Total Operating Time (hours) Total Operating Hours Including Rig-up, Pumping, Rig-down. Enter in decimal format.	3
HSE Incident, Accident, Injury HSE Incident, Accident, Injury. This should be recordable incidents only.	No
Was the job purpose achieved? Was the job delivered correctly as per customer agreed design?	Yes
Operating Hours (Pumping Hours) Total number of hours pumping fluid on this job. Enter in decimal format.	1
Customer Non-Productive Rig Time (hrs) Lost time due to Halliburton in the start, execution, or completion of an ordered service or product, or delays in a follow-on service. Enter in decimal format. 0 if none.	0
Type of Rig Classification Job Was Performed Type Of Rig (classification) Job Was Performed On	Drilling Rig (Portable)
Number Of JSAs Performed Number Of Jsas Performed	6
Number of Unplanned Shutdowns Unplanned shutdown is when injection stops for any period of time.	0
Was this a Primary Cement Job (Yes / No)	Yes

Sales Order #: 900693466	Line Item: 10	Survey Conducted Date: 8/27/2013
Customer: WPX ENERGY ROCKY MOUNTAIN LLC-EBUS		Job Type (BOM): CMT SURFACE CASING BOM
Customer Representative: AL DUNIHO		API / UWI: (leave blank if unknown) AFEYKCJIDLKZAJE4AAA
Well Name: SG		Well Number: 41-22
Well Type: Development Well	Well Country: United States of America	
H2S Present:	Well State: Colorado	Well County: Garfield

Primary Cement Job= Casing job, Liner job, or Tie-back job.	
Did We Run Wiper Plugs? Did We Run Top And Bottom Casing Wiper Plugs?	Top
Mixing Density of Job Stayed in Designed Density Range (0-100%) Density Range defined as +/- .20 ppg. Calculation: Total BBLs cement mixed at designed density divided by total BBLs of cement multiplied by 100	96
Was Automated Density Control Used? Was Automated Density Control (ADC) Used ?	Yes
Pump Rate (percent) of Job Stayed At Designed Pump Rate Pump Rate range defined as +/- 1bbl/min. Calculation: Total BBLs of fluid pumped at the designed rate divided by Total BBLs of fluid pumped, multiplied by 100	96
Nbr of Remedial Sqz Jobs Rqd - Competition Number Of Remedial Squeeze Jobs Required After Primary Job Performed By Competition	0
Nbr of Remedial Plug Jobs Rqd - HES Number Of Remedial Plug Jobs Needed After Primary Plug Pumped By HES	0
Nbr of Remedial Sqz Jobs Rqd - HES Number Of Remedial Squeeze Jobs Required After Primary Job Performed By HES	0