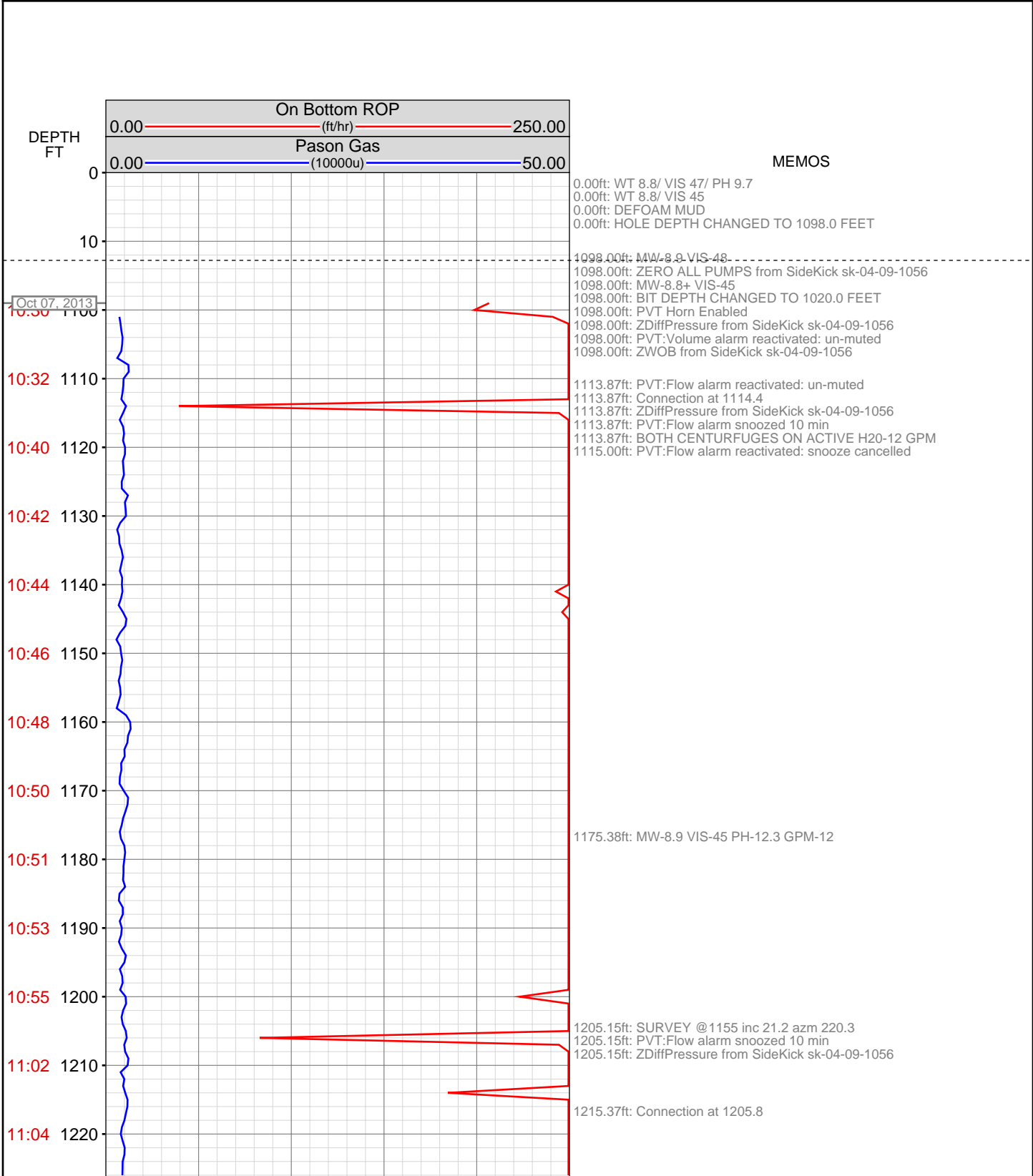
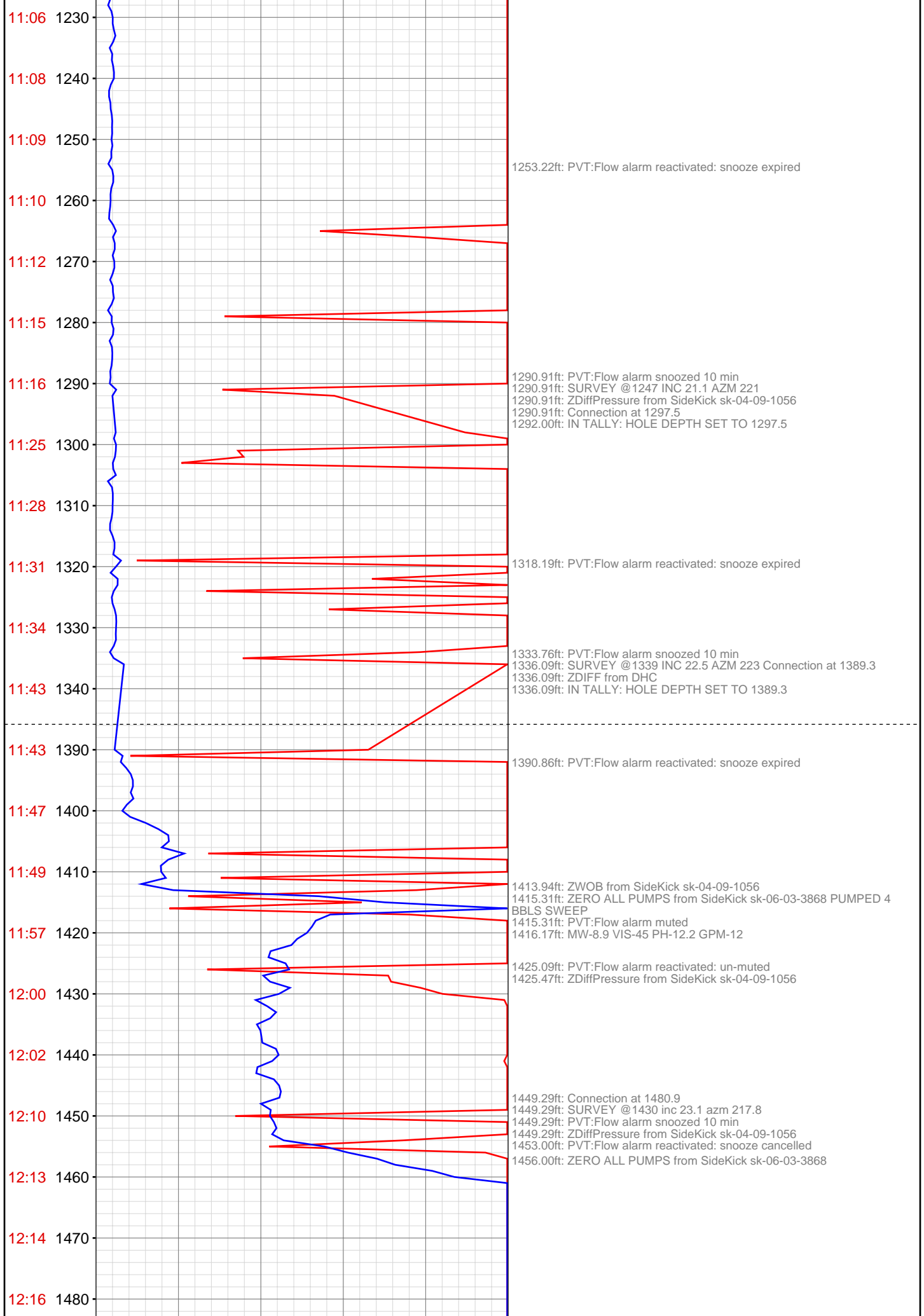


DataHub EDR Log

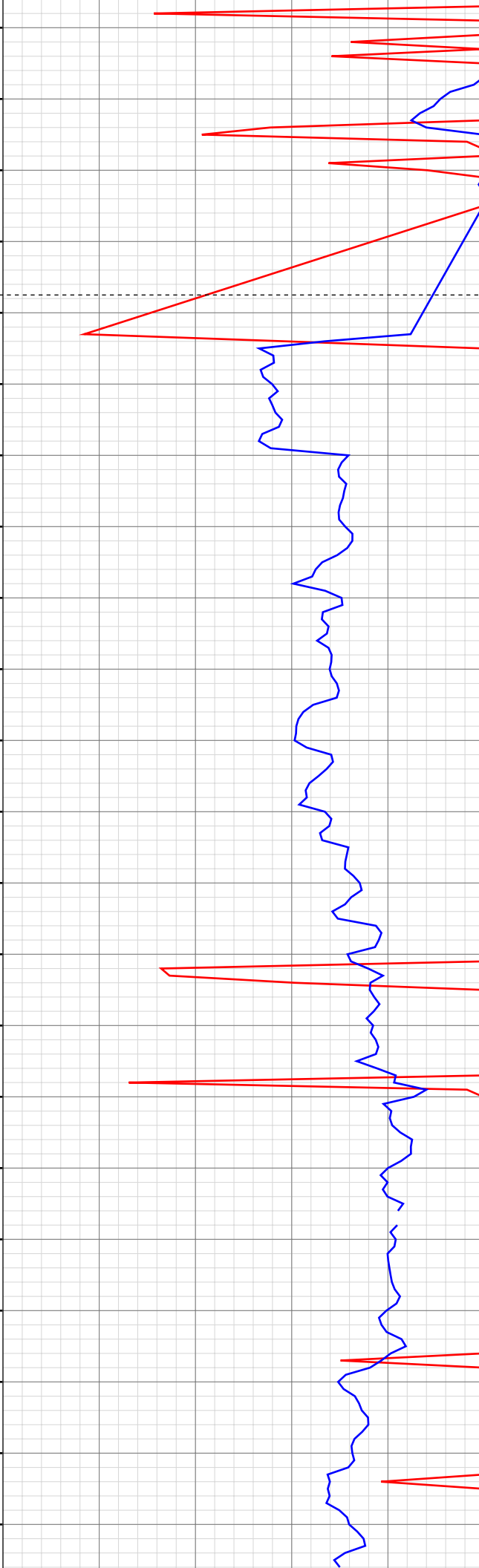
Fri Oct 11, 2013 09:08:32
Well Dossier 1381116550
Greg Veregin

OPERATOR: EnCana Oil & Gas (USA), Inc.	CONTRACTOR: Patterson-UTI Drilling Company
WELL: Hagen Federal 22-5AA	UNIQUE WELL ID: 05-045-22014
FIELD:	SPUD DATE: Oct 07, 2013 10:30
LOCATION: 1/6 NE SE SEC 36/07, T023S, R04W2	RELEASE DATE: Oct 11, 2013 02:30
COUNTRY: USA	
RIG: Pat-UTI 303	

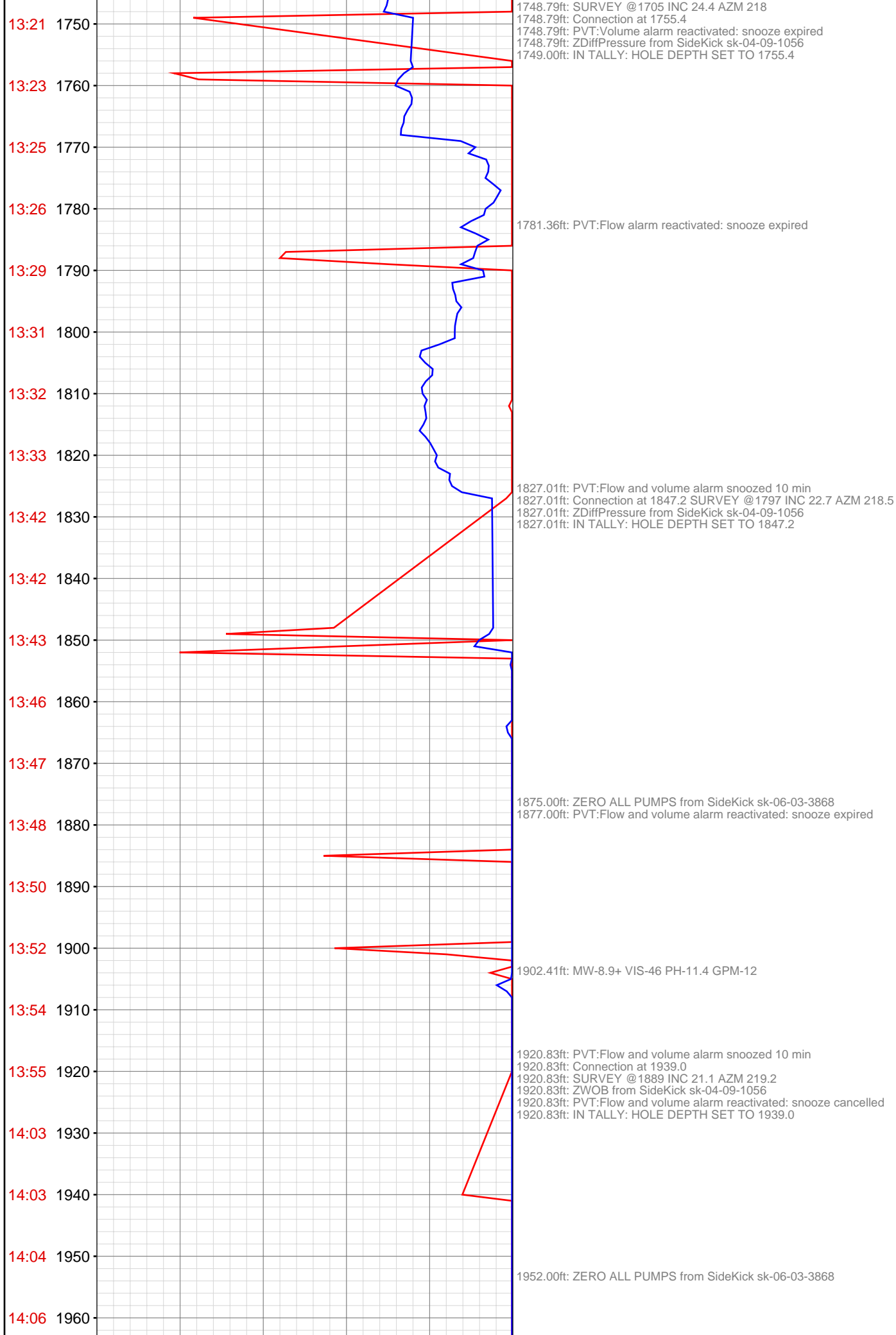




12:17 1490
12:19 1500
12:22 1510
12:31 1520
12:31 1570
12:41 1580
12:42 1590
12:43 1600
12:45 1610
12:46 1620
12:48 1630
12:49 1640
12:50 1650
12:51 1660
13:01 1670
13:04 1680
13:05 1690
13:06 1700
13:08 1710
13:09 1720
13:10 1730
13:12 1740



1515.06ft: IN TALLY: HOLE DEPTH SET TO 1572.5
1572.50ft: PVT:Flow and volume alarm snoozed 10 min
1572.50ft: Connection at 1572.5
1572.50ft: SURVEY @1522 inc 23.5 azm 217
1572.50ft: ZWOB from SideKick sk-04-09-1056
1572.50ft: ZDiffPressure from SideKick sk-04-09-1056
1573.38ft: PVT:Volume alarm reactivated: snooze cancelled
1573.38ft: PVT:Flow alarm muted
1606.00ft: ZERO ALL PUMPS from SideKick sk-06-03-3868
1661.93ft: SURVEY @1613 INC 23.7 AZM 215.2 Connection at 1663.7
1661.93ft: ZDiffPressure from SideKick sk-04-09-1056
1666.93ft: MW-8.9 VIS-46 PH-11.6 GPM-12
1682.00ft: PVT:Flow alarm reactivated: un-muted
1690.10ft: ZERO ALL PUMPS from SideKick sk-06-03-3868
1748.79ft: PVT:Flow and volume alarm snoozed 10 min



14:07 1970
14:08 1980
14:10 1990
14:11 2000
14:12 2010
14:13 2020
14:15 2030
14:27 2040
14:28 2050
14:29 2060
14:31 2070
14:32 2080
14:34 2090
14:35 2100
14:37 2110
14:39 2120
14:48 2130
14:49 2140
14:50 2150
14:52 2160
14:53 2170
14:55 2180

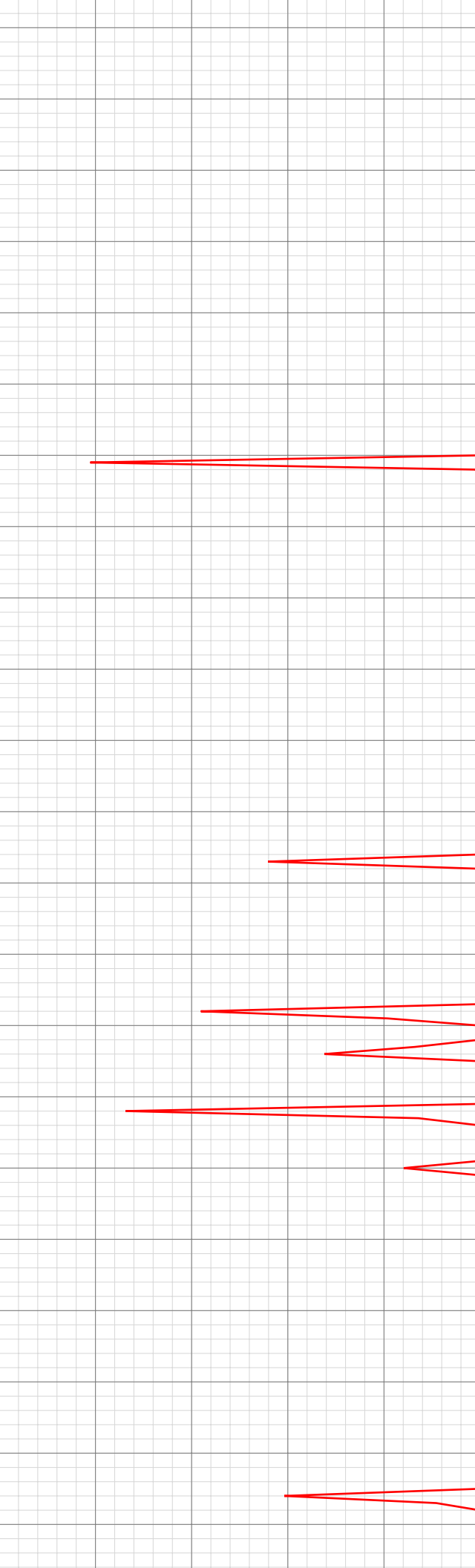
2030.72ft: PVT:Flow alarm snoozed 10 min
2030.72ft: Connection at 2030.9
2030.72ft: PVT:Flow alarm reactivated: snooze expired
2030.72ft: ZDiffPressure from SideKick sk-04-09-1056
2030.72ft: PVT:Flow alarm snoozed 10 min
2030.72ft: SURVEY @1980 INC 21.4 AZM 219.6

2040.83ft: PVT:Flow alarm reactivated: snooze cancelled

2072.00ft: ZERO ALL PUMPS from SideKick sk-06-03-3868

2121.82ft: PVT:Flow and volume alarm snoozed 10 min
2121.82ft: SURVEY 2072 INC 21.5 AZM 220.2 Connection at 2122.4
2121.82ft: ZDiffPressure from SideKick sk-04-09-1056
2124.07ft: PVT:Volume alarm reactivated: snooze expired

2140.00ft: PVT:Flow alarm reactivated: snooze expired



14:56 2190
14:58 2200
14:59 2210
15:09 2220
15:11 2230
15:12 2240
15:14 2250
15:15 2260
15:16 2270
15:18 2280
15:19 2290
15:21 2300
15:30 2310
15:32 2320
15:33 2330
15:36 2340
15:37 2350
15:39 2360
15:40 2370
15:42 2380
15:44 2390
15:53 2400

2191.89ft: MW-9 VIS-46 PH-10.9 GPM-12

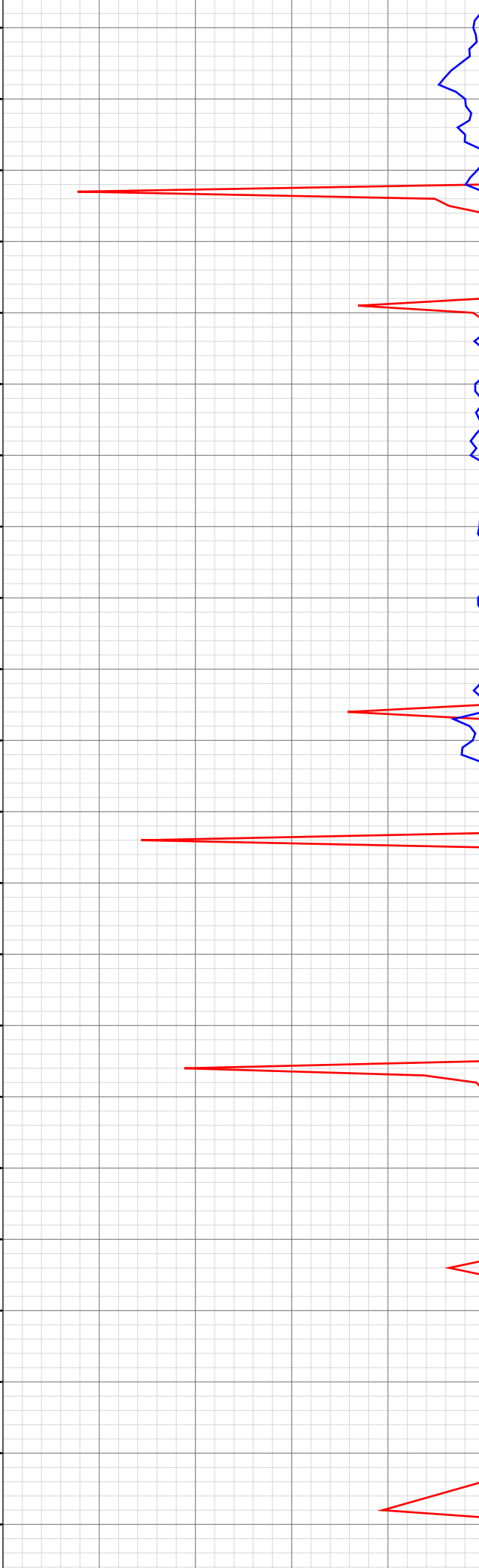
2212.58ft: PVT:Flow and volume alarm snoozed 10 min
2212.58ft: Connection at 2214.3
2212.58ft: SURVEY @2164 INC 21.7 AZM 221.2
2212.58ft: ZDiffPressure from SideKick sk-04-09-1056

2247.01ft: PVT:Flow and volume alarm reactivated: snooze expired
2249.38ft: ZERO ALL PUMPS from SideKick sk-06-03-3868

2303.07ft: PVT:Flow and volume alarm snoozed 10 min
2303.07ft: Connection at 2305.5
2303.07ft: SURVEY @2255 INC 20.3 AZM 216.6
2303.07ft: ZDiffPressure from SideKick sk-04-09-1056
2303.07ft: ZWOB from SideKick sk-04-09-1056

2332.00ft: ZERO ALL PUMPS from SideKick sk-06-03-3868
2336.50ft: PVT:Flow and volume alarm reactivated: snooze expired

2394.35ft: PVT:Flow alarm snoozed 10 min
2394.35ft: Connection at 2397.0
2394.35ft: SURVEY @2347 INC 20.2 AZM 216.2
2394.35ft: ZDiffPressure from SideKick sk-04-09-1056
2394.39ft: IN TALLY: HOLE DEPTH SET TO 2397.0



15:55 2410
15:57 2420
15:59 2430
16:01 2440
16:03 2450
16:04 2460
16:06 2470
16:07 2480
16:17 2490
16:19 2500
16:21 2510
16:23 2520
16:24 2530
16:26 2540
16:28 2550
16:29 2560
16:31 2570
16:40 2580
16:41 2590
16:43 2600
16:44 2610
16:46 2620

2427.00ft: PVT:Flow alarm reactivated: snooze expired

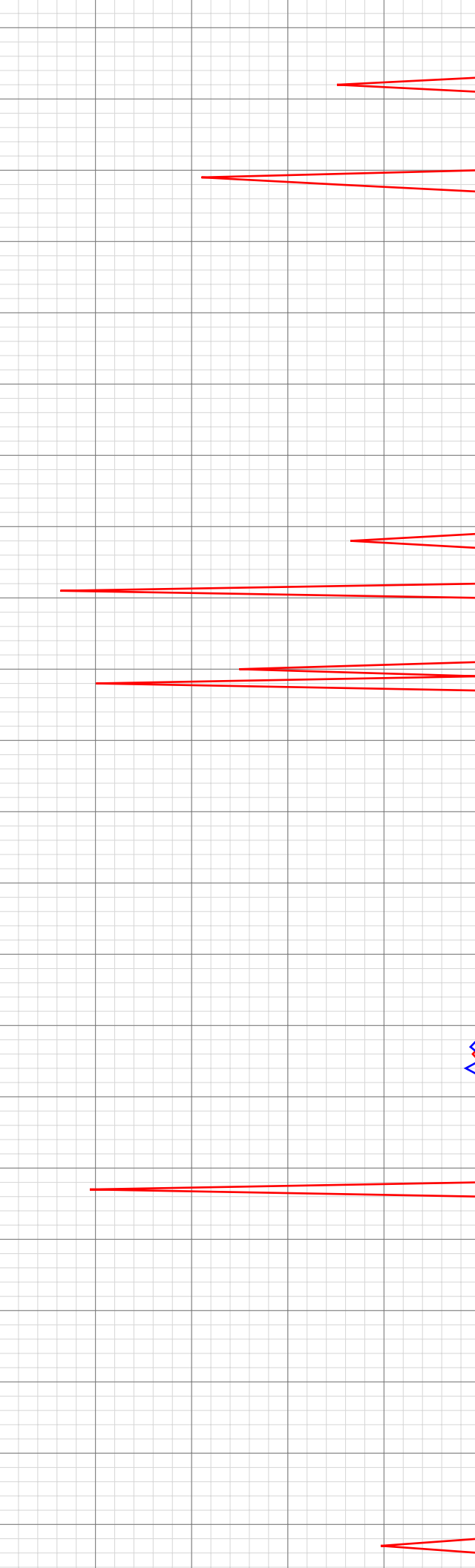
2467.39ft: MW-9.1 VIS-45 PH-10.4 GPM-12

2488.56ft: Connection at 2488.2
2488.56ft: PVT:Flow and volume alarm snoozed 10 min
2488.56ft: SURVEY @2438 INC 21,3 AZM 216.2
2488.56ft: ZDiffPressure from SideKick sk-04-09-1056

2520.00ft: PVT:Flow and volume alarm reactivated: snooze expired
2522.00ft: ZERO ALL PUMPS from SideKick sk-06-03-3868

2572.35ft: PVT:Flow and volume alarm snoozed 10 min
2572.35ft: Connection at 2580.1
2572.35ft: ZDiffPressure from SideKick sk-04-09-1056
2572.35ft: ZWOB from SideKick sk-04-09-1056

2608.21ft: PVT:Flow and volume alarm reactivated: snooze expired



16:48 2630
16:49 2640
16:51 2650
16:52 2660
17:00 2670
17:02 2680
17:04 2690
17:06 2700
17:07 2710
17:09 2720
17:10 2730
17:12 2740
17:13 2750
17:15 2760
17:25 2770
17:29 2780
17:31 2790
17:33 2800
17:34 2810
17:36 2820
17:38 2830
17:39 2840

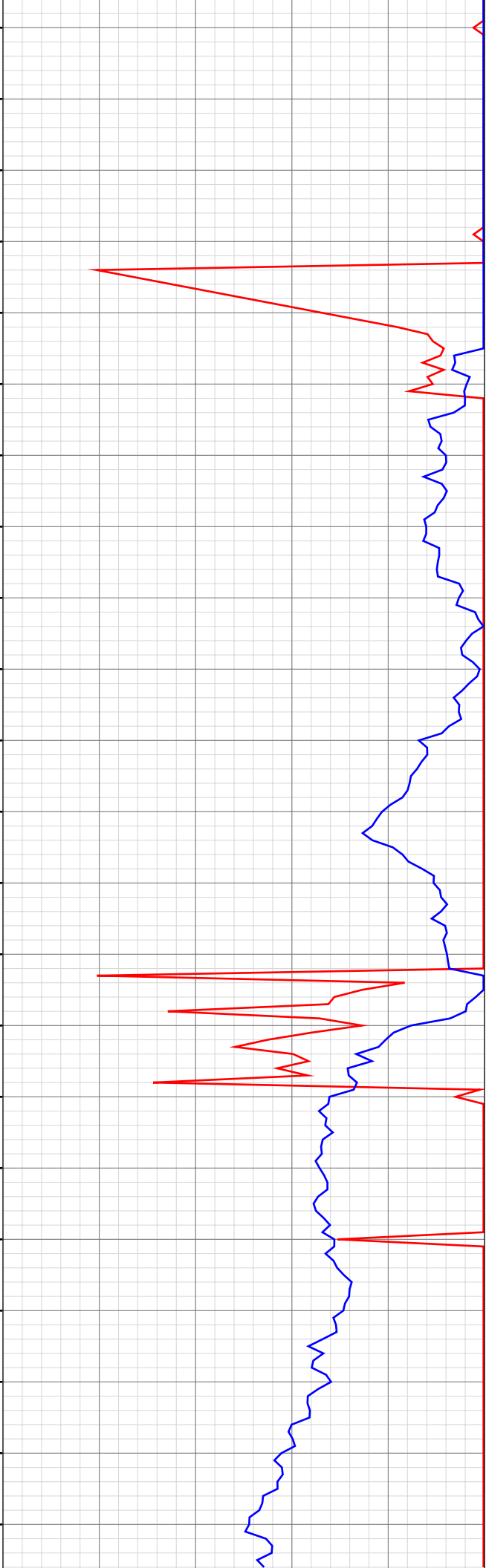
2663.67ft: PVT:Flow and volume alarm snoozed 10 min
2663.67ft: SURVEY @ 2621' INC 21.8 AZI 215.5 Connection at 2671.1
2663.67ft: MW-9.1+ VIS-46 PH-10 GPM-12
2663.67ft: ZDiffPressure from SideKick sk-04-09-1056
2664.00ft: IN TALLY: HOLE DEPTH SET TO 2671.1

2701.33ft: PVT:Flow and volume alarm reactivated: snooze expired

2713.48ft: ZERO ALL PUMPS from SideKick sk-06-03-3868

2762.30ft: PVT:Flow and volume alarm snoozed 10 min
2762.30ft: Connection at 2762.8
2762.30ft: ZDiffPressure from SideKick sk-04-09-1056

2777.24ft: PVT:Flow and volume alarm reactivated: snooze expired



17:41 2850
17:51 2860
17:55 2870
17:57 2880
17:59 2890
18:00 2900
18:02 2910
18:03 2920
18:05 2930
18:06 2940
18:16 2950
18:17 2960
18:19 2970
18:20 2980
18:22 2990
18:24 3000
18:26 3010
18:28 3020
18:29 3030
18:39 3040
18:40 3050
18:42 3060



2853.05ft: PVT:Flow and volume alarm snoozed 10 min
2853.05ft: SURVEY @ 2804' INC 21 AZI 216.4 Connection at 2854.5
2853.05ft: ZDiffPressure from SideKick sk-04-09-1056

2870.05ft: PVT:Flow and volume alarm reactivated: snooze expired

2941.38ft: Connection at 2945.9
2944.06ft: PVT:Flow alarm muted
2944.06ft: ZWOB from SideKick sk-04-09-1056
2944.06ft: WT 9.2/ VIS 46/ PH 9.8
2944.06ft: SURVEY @ 2895' INC 22.8 AZI 217.3
2944.06ft: ZDiffPressure from SideKick sk-04-09-1056
2944.06ft: PVT:Flow alarm reactivated: un-muted

3030.74ft: Connection at 3037.4
3035.11ft: PVT:Flow alarm muted
3035.11ft: SURVEY @ 2987' INC 22.4 AZI 216.9
3040.03ft: PVT:Flow alarm reactivated: un-muted

3063.90ft: PUMP SWEEP

18:43 3070
18:45 3080
18:47 3090
18:48 3100
18:50 3110
18:51 3120
19:04 3130
19:06 3140
19:07 3150
19:09 3160
19:10 3170
19:12 3180
19:13 3190
19:15 3200
19:17 3210
19:26 3220
19:30 3230
19:34 3240
19:36 3250
19:37 3260
19:39 3270
19:41 3280

3126.13ft: B-O-P DRILL
3126.13ft: PVT:Flow alarm muted
3126.13ft: Connection at 3129.2
3126.13ft: SURVEY @ '3079' INC 22 AZI 216.5
3126.13ft: PVT:Flow alarm reactivated: un-muted

3152.35ft: WT 9.2+ / VIS 46 / PH 9.5 / H2O 12 GPM

3165.46ft: PUMP SWEEP

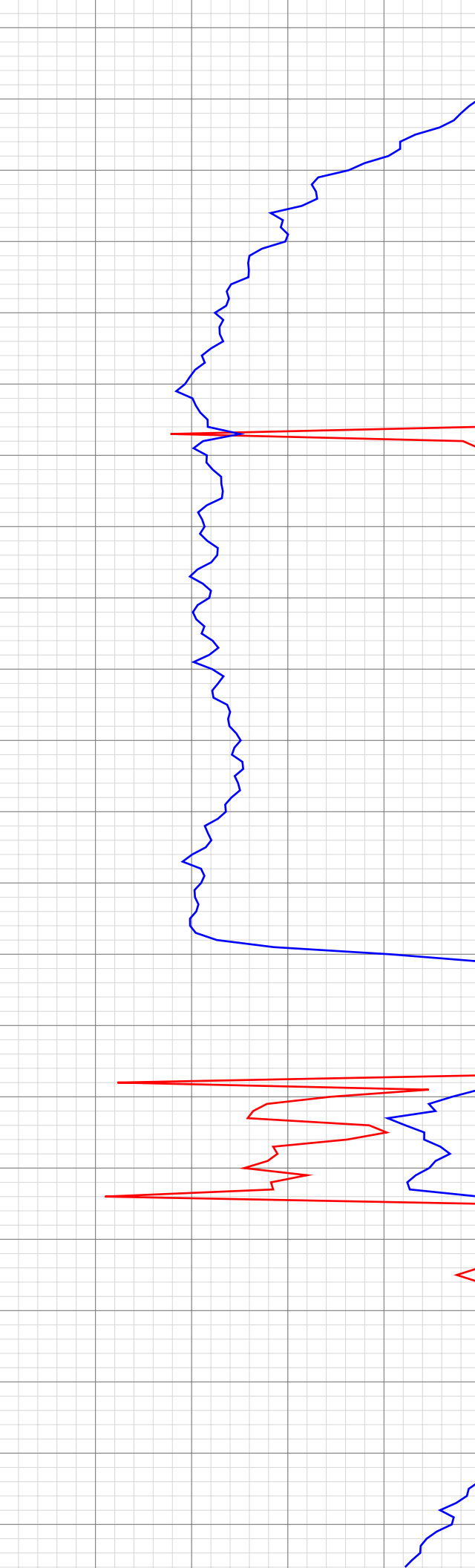
3172.49ft: PUMP OUT CELLAR

3208.93ft: Connection at 3220.9

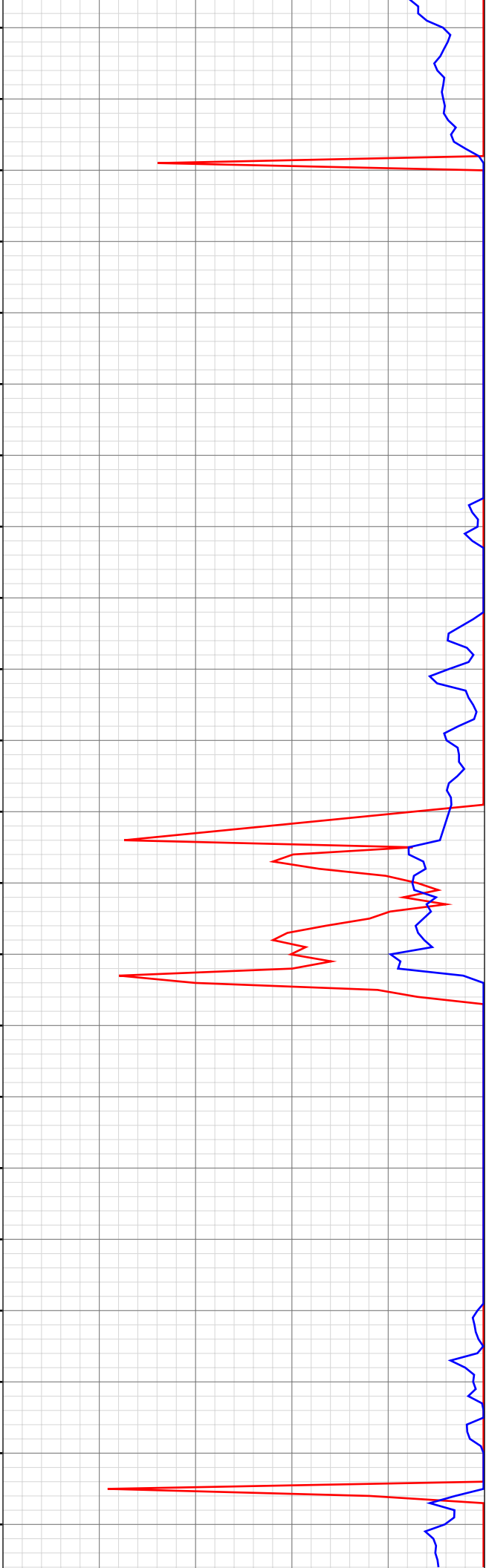
3217.27ft: PVT:Flow alarm muted
3217.27ft: SURVEY @ '3170' INC 21.2 AZI 217.1
3217.27ft: ZDiffPressure from SideKick sk-04-09-1056

3236.57ft: PVT:Flow alarm reactivated: un-muted

3255.33ft: PUMP SWEEP

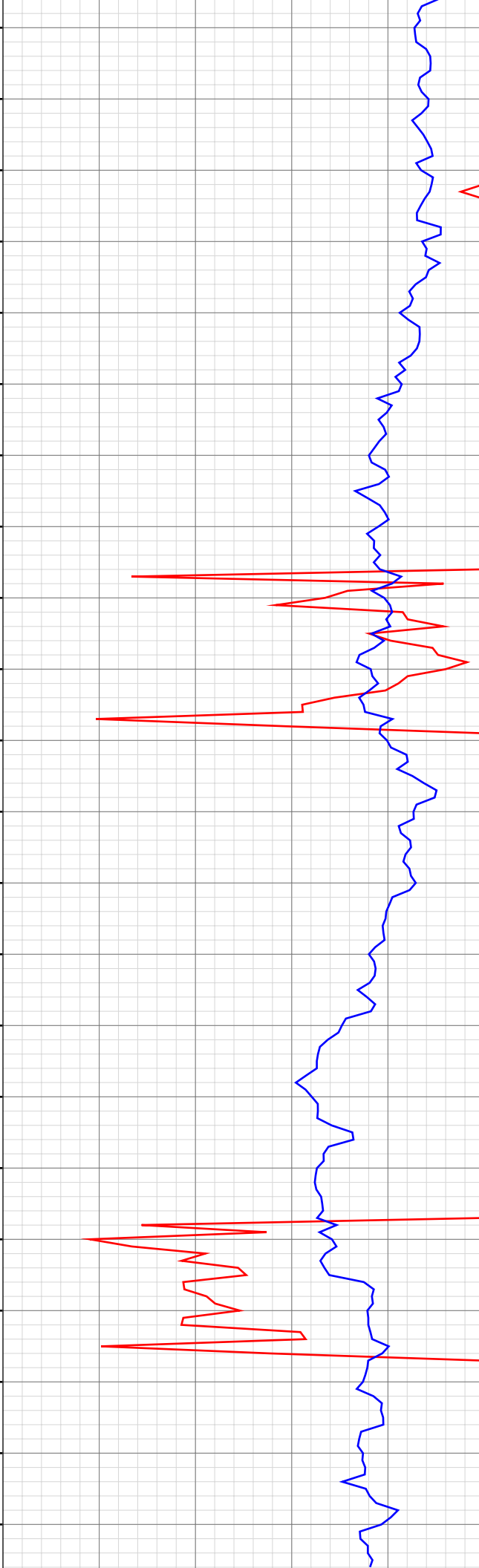


19:42 3290
19:43 3300
19:52 3310
19:54 3320
19:56 3330
19:58 3340
19:59 3350
20:01 3360
20:02 3370
20:04 3380
20:05 3390
20:15 3400
20:17 3410
20:20 3420
20:24 3430
20:26 3440
20:28 3450
20:30 3460
20:31 3470
20:33 3480
20:35 3490
20:44 3500



3301.67ft: Connection at 3312.2
3308.53ft: PVT:Flow alarm muted
3308.53ft: SURVEY @ 3262' INC 22.1 AZI 215.2
3320.01ft: PVT:Flow alarm reactivated: un-muted
3334.06ft: PUMP SWEEP
3371.72ft: WT 9.2+/- VIS 46/ PH 9.5/ H2O 12 GPM
3398.43ft: Connection at 3403.3
3399.87ft: PVT:Flow alarm muted
3399.87ft: ZWOB from SideKick sk-04-09-1056
3399.87ft: IN TALLY: HOLE DEPTH SET TO 3403.3
3424.51ft: PVT:Flow alarm reactivated: un-muted
3494.59ft: Connection at 3494.8
3494.85ft: PVT:Flow alarm muted
3494.85ft: SURVEY @ 3444' INC 21.9 AZI 214.5
3494.85ft: PVT:Flow alarm reactivated: un-muted

20:46 3510
20:48 3520
20:50 3530
20:52 3540
20:53 3550
20:55 3560
20:56 3570
20:58 3580
21:08 3590
21:11 3600
21:15 3610
21:17 3620
21:18 3630
21:20 3640
21:21 3650
21:23 3660
21:25 3670
21:36 3680
21:42 3690
21:45 3700
21:47 3710
21:49 3720



3511.42ft: PUMP SWEEP

3582.05ft: WT 9.2+ / VIS 46 / PH 9.7 / H2O 12 GPM Connection at 3586.4
3586.25ft: PVT:Flow alarm muted
3586.25ft: SURVEY @ 3536' INC 20.9 AZI 215
3586.25ft: PVT:Flow alarm reactivated: un-muted

3619.29ft: PUMP SWEEP

3674.31ft: Connection at 3677.8
3677.62ft: PVT:Flow alarm muted
3677.62ft: SURVEY @ 3627' INC 21.8 AZI 214.4
3677.62ft: ZDiffPressure from SideKick sk-04-09-1056
3677.62ft: PVT:Flow alarm reactivated: un-muted
3678.61ft: DEFOAM MUD

3707.19ft: PUMP SWEEP

21:50 3730
21:52 3740
21:54 3750
21:56 3760
22:06 3770
22:08 3780
22:09 3790
22:11 3800
22:13 3810
22:15 3820
22:17 3830
22:19 3840
22:21 3850
22:22 3860
22:33 3870
22:35 3880
22:36 3890
22:38 3900
22:40 3910
22:42 3920
22:44 3930
22:45 3940

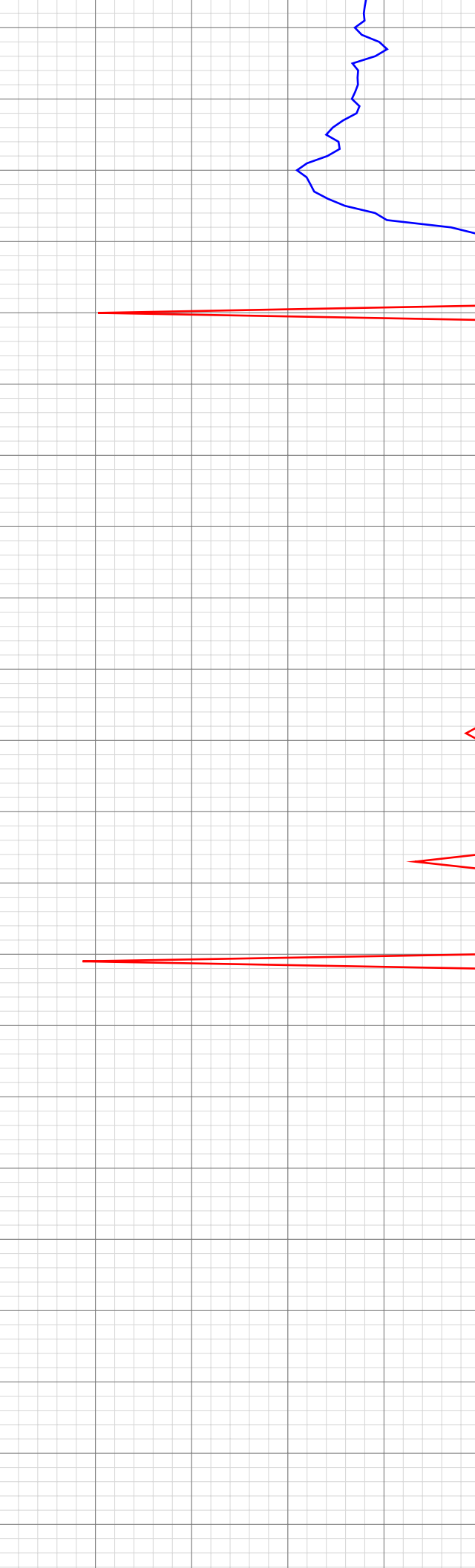
3753.38ft: WT 9.2+ / VIS 46 / PH 9.7 / H2O 12 GPM

3769.13ft: Connection at 3768.8
3769.13ft: PVT:Flow alarm muted
3769.13ft: ZWOB from SideKick sk-04-09-1056
3769.13ft: SURVEY @ 3718' INC 22.9 AZI 216
3769.13ft: ZDiffPressure from SideKick sk-04-09-1056
3769.39ft: PVT:Flow alarm reactivated: un-muted

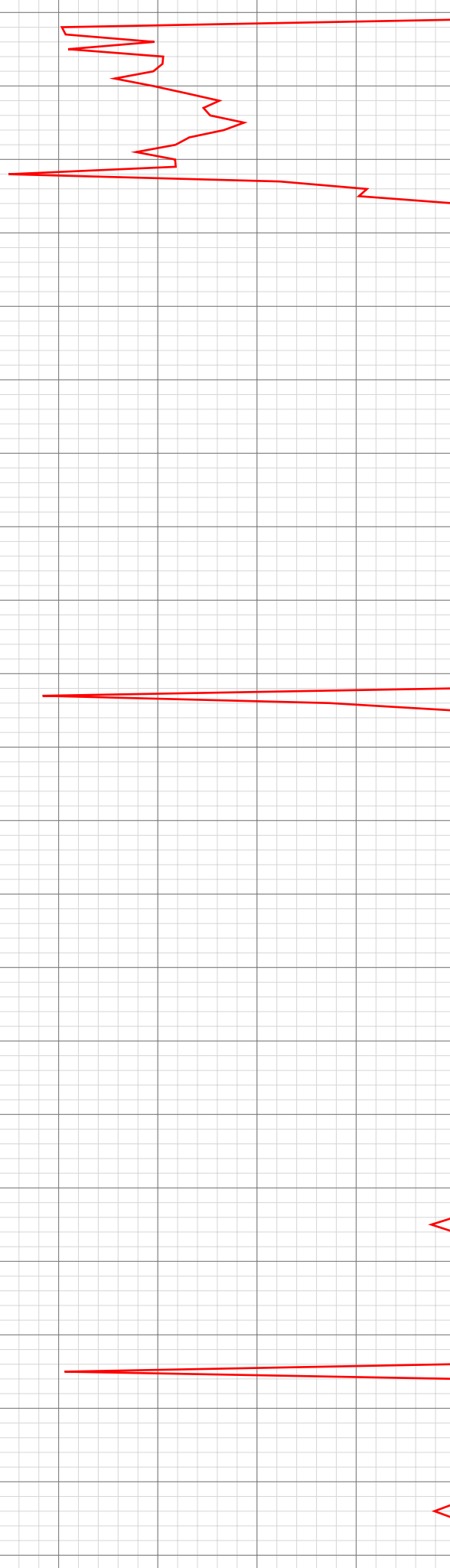
3801.87ft: PUMP SWEEP

3860.33ft: Connection at 3860.1
3860.33ft: PVT:Flow alarm muted
3860.33ft: SURVEY @ 3810' INC 22.6 AZI 215.3
3860.33ft: PVT:Flow alarm reactivated: un-muted

3892.59ft: PUMP SWEEP



22:47 3950
23:01 3960
23:06 3970
23:11 3980
23:13 3990
23:14 4000
23:16 4010
23:18 4020
23:20 4030
23:22 4040
23:32 4050
23:34 4060
23:36 4070
23:38 4080
23:40 4090
23:41 4100
23:43 4110
23:45 4120
23:47 4130
23:57 4140
23:59 4150
Oct 08, 2013
00:01 4160



3951.80ft: Connection at 3951.7
3951.80ft: PVT:Flow alarm muted
3951.80ft: PVT:Flow alarm reactivated: un-muted
3958.14ft: WT 9.2+/ VIS 46/ PH 9.8/ H2O 12 GPM
3973.88ft: SURVEY @ 3001' INC 21.8 AZI 215.2
3978.45ft: PUMP SWEEP
3984.28ft: SURVEY EDIT @ 3901' INC 21.8 AZI 215.2
4042.91ft: PVT:Flow alarm muted
4042.91ft: Connection at 4043.2
4042.91ft: SURVEY @ 3993' INC 21.8 AZI 219.2
4047.01ft: PVT:Flow alarm reactivated: un-muted
4068.04ft: PUMP SWEEP
4132.15ft: Connection at 4134.8
4134.15ft: PVT:Flow alarm muted
4134.15ft: SURVEY @ 4093' INC 21.8 AZI 218.3
4134.15ft: ZDiffPressure from SideKick sk-04-09-1056
4134.15ft: PVT:Flow alarm reactivated: un-muted
4158.01ft: WT 9.3/ VIS 46/ PH 9.8/H2O 12 GPM

00:03 4170
00:05 4180
00:07 4190
00:09 4200
00:11 4210
00:13 4220
00:24 4230
00:26 4240
00:28 4250
00:30 4260
00:32 4270
00:34 4280
00:36 4290
00:37 4300
00:39 4310
00:50 4320
00:52 4330
00:54 4340
00:55 4350
00:58 4360
01:01 4370
01:03 4380

4178.71ft: PUMP SWEEP

4225.13ft: PVT:Flow alarm muted
4225.13ft: Connection at 4226.2
4225.13ft: SURVEY @ 4176' INC 21.9 AZI 218.3
4225.13ft: PVT:Flow alarm reactivated: un-muted

4254.43ft: PUMP SWEEP

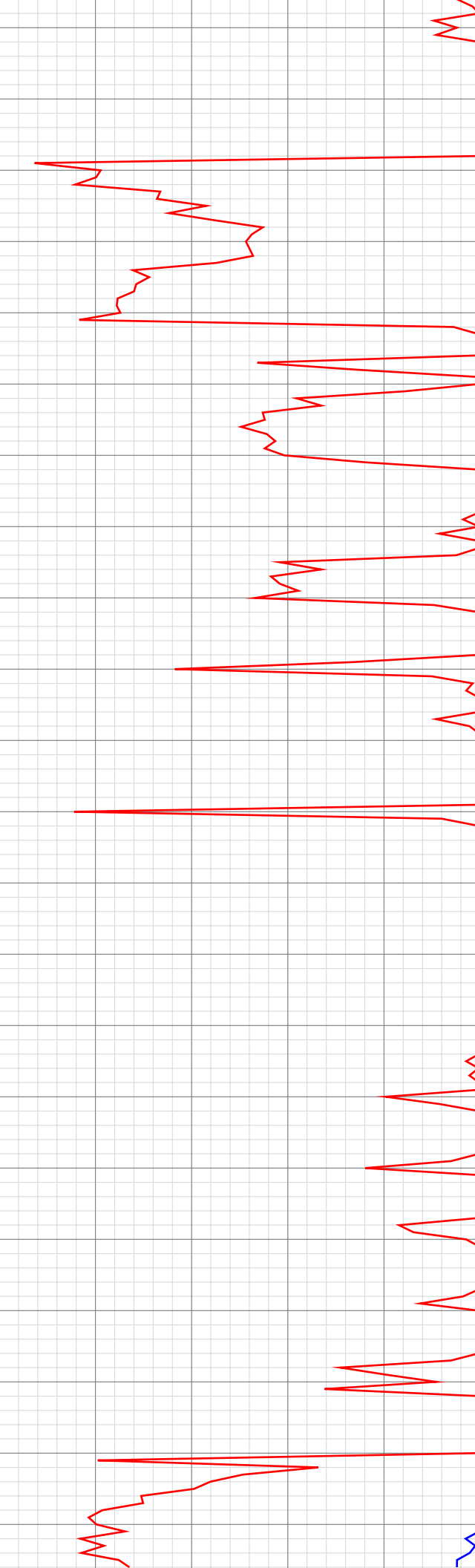
4316.77ft: PVT:Flow alarm muted
4316.77ft: Connection at 4317.7
4316.77ft: SURVEY @ 4267' INC 21.6 AZI 217.8
4316.77ft: PVT:Flow alarm reactivated: un-muted

4350.10ft: PUMP SWEEP

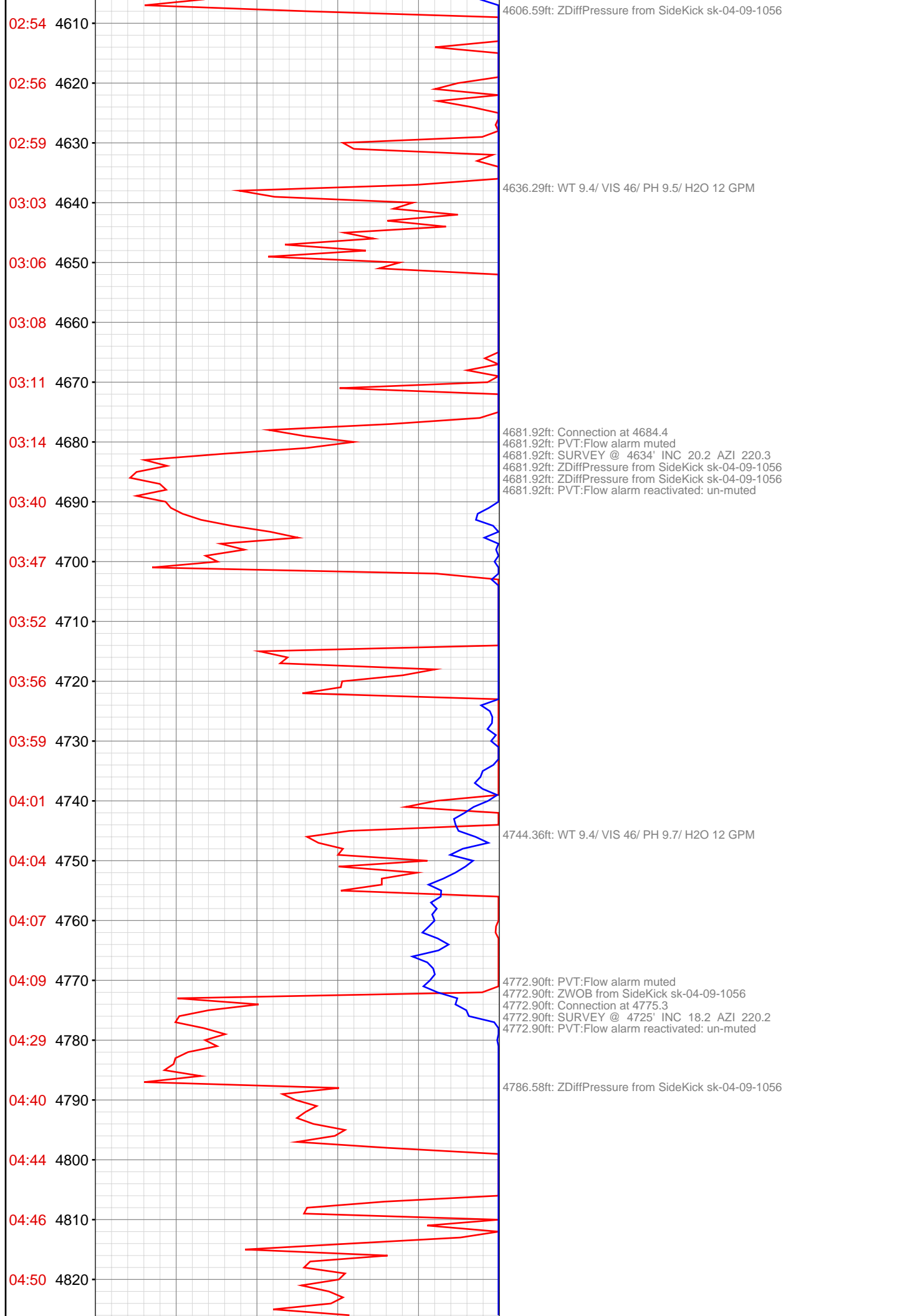
4365.39ft: WT 9.3+/ VIS 46/ PH 9.7/ H2O 12 GPM



01:06 4390
01:07 4400
01:21 4410
01:28 4420
01:39 4430
01:41 4440
01:45 4450
01:47 4460
01:51 4470
01:53 4480
01:56 4490
02:06 4500
02:08 4510
02:10 4520
02:12 4530
02:15 4540
02:17 4550
02:19 4560
02:21 4570
02:24 4580
02:35 4590
02:42 4600



4408.17ft: Connection at 4409.5
4408.17ft: PVT:Flow alarm muted
4408.17ft: ZWOB from SideKick sk-04-09-1056
4418.21ft: PVT:Flow alarm reactivated: un-muted
4434.74ft: PUMP SWEEP
4499.31ft: PVT:Flow alarm muted
4499.31ft: Connection at 4501.1
4499.31ft: WT 9.3+/ VIS 46/ PH 9.7/ H2O 12 GPM
4499.31ft: SURVEY @ 4451' INC 22.1 AZI 219.3
4499.31ft: PVT:Flow alarm reactivated: un-muted
4590.68ft: PVT:Flow alarm muted
4590.68ft: Connection at 4592.6
4590.68ft: SURVEY @ 4542' INC 21.9 AZI 217.7
4590.68ft: PVT:Flow alarm reactivated: un-muted



04:55 4830
04:59 4840
05:03 4850
05:07 4860
05:22 4870
05:29 4880
05:32 4890
05:34 4900
05:37 4910
05:40 4920
05:43 4930
05:46 4940
05:49 4950
06:02 4960
06:10 4970
06:17 4980
06:21 4990
06:24 5000
06:27 5010
06:30 5020
06:33 5030
06:35 5040

4831.66ft: WT 9.4/ VIS 46/ PH 9.5/ H2O 12 GPM

4864.14ft: PVT:Flow alarm muted
4864.14ft: Connection at 4866.8
4864.14ft: ZDiffPressure from SideKick sk-04-09-1056 SURVEY @ 4816
INC, 16.7 AZ, 221.2
4864.14ft: PVT:Flow alarm reactivated: un-muted

4889.24ft: PUMP SWEEP

4955.81ft: PVT:Flow alarm muted
4955.81ft: Connection at 4958.4
4955.81ft: SURVEY @4908 INC 16.5 AZM 220.7

4973.75ft: MW-9.4 VIS-46 PH-9.5 GPM-10
4973.75ft: ZDiffPressure from SideKick sk-04-09-1056

4984.88ft: ZERO ALL PUMPS from SideKick sk-06-03-3868

5049.00ft: SURVEY @5000 INC 14.0 AZM 221.7



5046.82ft: SURVEY @5000 INC 14.9 AZM 221.7 Connection at 5050.1
5046.82ft: ZDiffPressure from SideKick sk-04-09-1056
5047.41ft: IN TALLY: HOLE DEPTH SET TO 5050.1

5072.74ft: ZDiffPressure from SideKick sk-04-09-1056
5075.20ft: PVT:Flow alarm reactivated: un-muted

5085.30ft: ZERO ALL PUMPS from SideKick sk-06-03-3868

5140.58ft: MW-9.4 VIS-46 PH-9.2 GPM-10
5140.58ft: PVT:Flow alarm snoozed 10 min
5140.58ft: Connection at 5141.8
5140.58ft: SURVEY @5097 INC 13 AZM 221.7
5140.58ft: ZDiffPressure from SideKick sk-04-09-1056
5141.01ft: PVT:Flow alarm reactivated: snooze cancelled

5164.57ft: ZDiffPressure from SideKick sk-04-09-1056

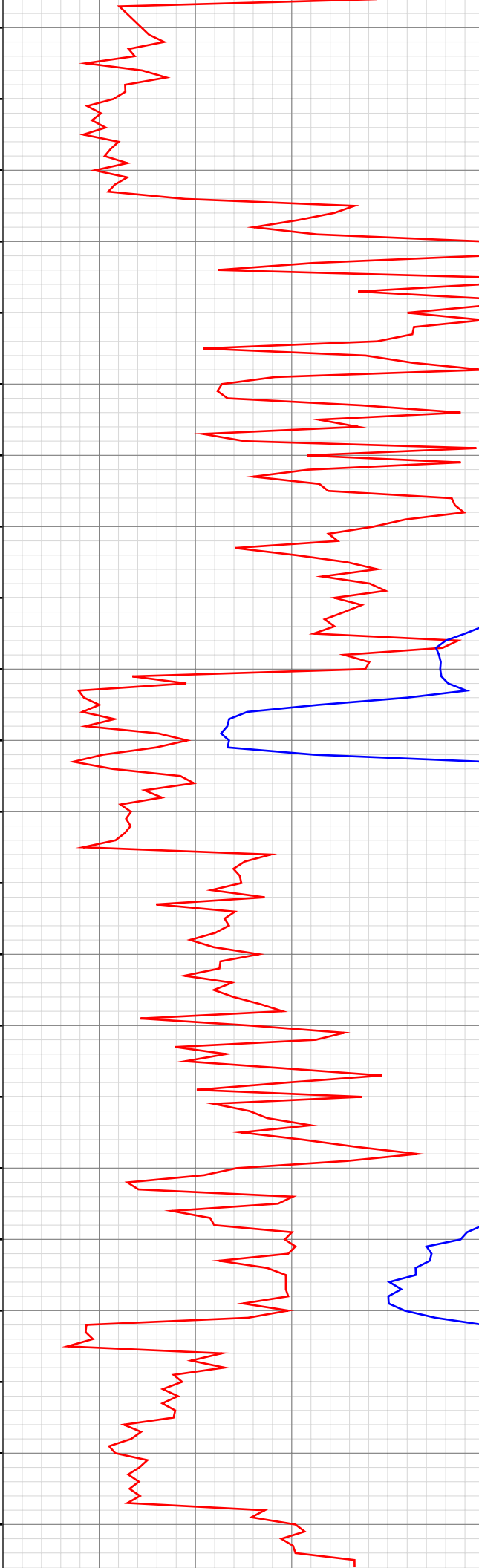
5184.28ft: TRANSFERING 20 BBLS DEWATERED WATER

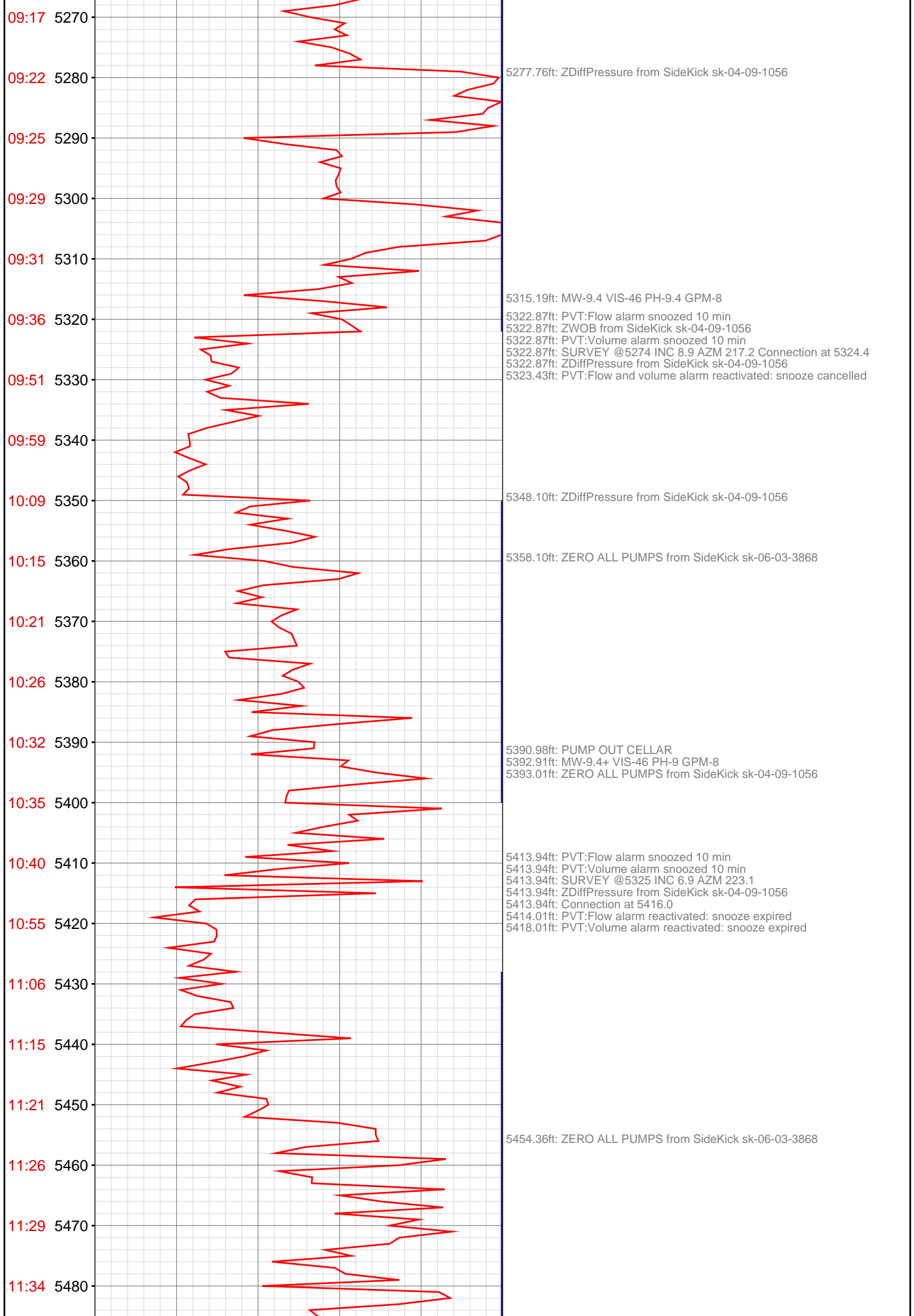
5230.41ft: MW-9.4 VIS-46 PH-9.4 GPM-10
5231.27ft: ZWOB from SideKick sk-04-09-1056
5231.27ft: PVT:Flow alarm snoozed 10 min
5231.27ft: PVT:Flow alarm reactivated: snooze expired
5231.27ft: PVT:Volume alarm snoozed 10 min
5231.27ft: Connection at 5233.3
5231.27ft: PVT:Flow alarm snoozed 10 min
5231.27ft: ZDiffPressure from SideKick sk-04-09-1056
5231.27ft: SURVEY @5183 INC 10.9 AZM 219.1
5239.17ft: PVT:Volume alarm reactivated: snooze expired
5242.49ft: PVT:Flow alarm reactivated: snooze expired

5256.04ft: ZDiffPressure from SideKick sk-04-09-1056

5262.04ft: ZERO ALL PUMPS from SideKick sk-06-03-3868

06:45 5050
06:53 5060
07:05 5070
07:12 5080
07:15 5090
07:18 5100
07:22 5110
07:25 5120
07:29 5130
07:43 5140
07:53 5150
08:02 5160
08:11 5170
08:17 5180
08:22 5190
08:26 5200
08:30 5210
08:36 5220
08:41 5230
08:57 5240
09:05 5250
09:13 5260





5485.70ft: MW-9.4+ VIS-46 PH-9 GPM-8

11:38 5490

11:42 5500

11:59 5510

12:09 5520

12:19 5530

12:24 5540

12:27 5550

12:32 5560

12:38 5570

12:43 5580

12:47 5590

13:03 5600

13:16 5610

13:28 5620

13:41 5630

13:47 5640

13:51 5650

13:56 5660

14:01 5670

14:05 5680

14:18 5690

14:24 5700

5505.02ft: PVT:Flow alarm snoozed 10 min
5505.02ft: ZWOB from SideKick sk-04-09-1056
5505.02ft: Connection at 5507.2
5505.02ft: SURVEY @5416 INC 4.8 AZM 219.2
5505.02ft: ZDiffPressure from SideKick sk-04-09-1056
5508.99ft: PVT:Flow alarm reactivated: snooze expired

5527.53ft: ZDiffPressure from SideKick sk-04-09-1056

5535.27ft: ZERO ALL PUMPS from SideKick sk-06-03-3868

5562.96ft: MW-9.5 VIS-46 PH-9.2 GPM-8

5596.23ft: PVT:Flow and volume alarm snoozed 10 min
5596.23ft: SURVEY @5548 INC 4 AZM 208.3 Connection at 5599.0
5596.23ft: ZDiffPressure from SideKick sk-04-09-1056
5599.70ft: PVT:Flow and volume alarm reactivated: snooze expired

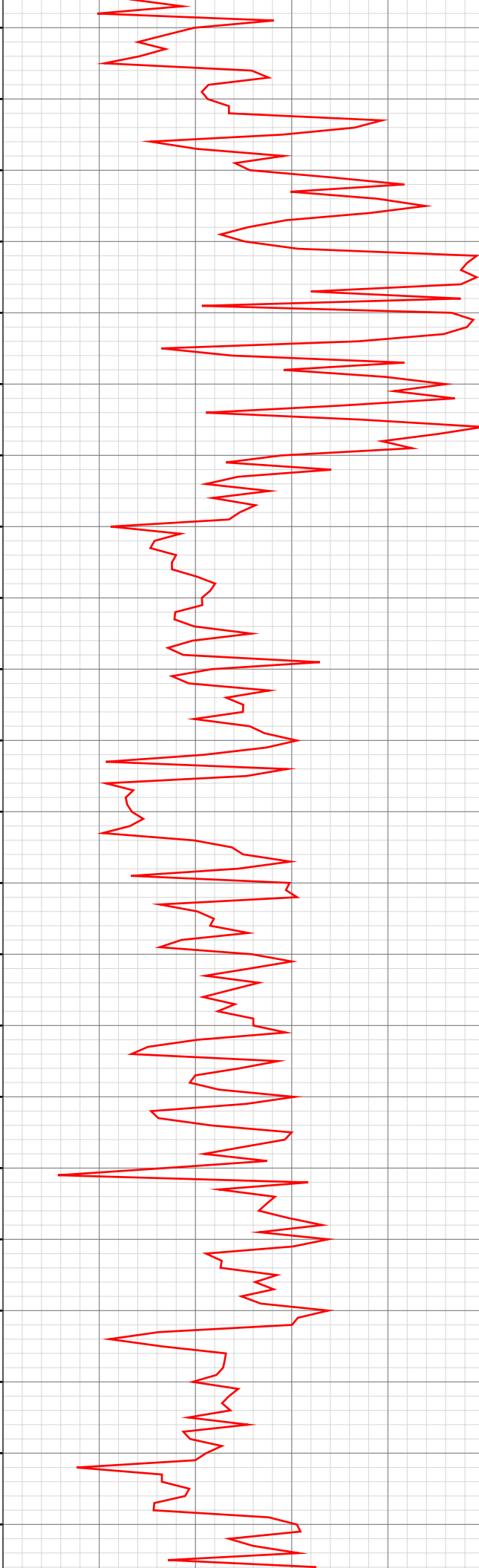
5625.10ft: MW-9.5 VIS-46 PH-9 GPM-8
5626.67ft: ZDiffPressure from SideKick sk-04-09-1056

5637.01ft: ZERO ALL PUMPS from SideKick sk-06-03-3868

5687.57ft: PVT:Flow alarm snoozed 10 min
5687.57ft: PVT:Volume alarm snoozed 10 min
5687.57ft: SURVEY @5640 INC 2.3 AZM 212.6
5687.57ft: Connection at 5690.6
5687.57ft: ZDiffPressure from SideKick sk-04-09-1056

5695.70ft: PVT:Flow alarm reactivated: snooze expired
5697.41ft: PVT:Volume alarm reactivated: snooze expired

14:31 5710
14:39 5720
14:44 5730
14:47 5740
14:50 5750
14:54 5760
14:57 5770
15:09 5780
15:16 5790
15:21 5800
15:26 5810
15:34 5820
15:41 5830
15:46 5840
15:51 5850
15:57 5860
16:02 5870
16:34 5880
16:38 5890
16:44 5900
16:49 5910
16:57 5920



5714.47ft: ZDiffPressure from SideKick sk-04-09-1056

5722.34ft: MW 9.5+ VIS 46 PH 9.9

5779.07ft: Connection at 5782.2
5779.07ft: PVT:Flow alarm snoozed 10 min
5779.07ft: SURVEY @5732 INC .5 AZM 171.2
5779.07ft: ZDiffPressure from SideKick sk-04-09-1056
5779.07ft: ZWOB from SideKick sk-04-09-1056

5788.25ft: PVT:Flow alarm reactivated: snooze expired
5788.55ft: ZERO ALL PUMPS from SideKick sk-06-03-3868

5826.61ft: MW-9.5+ VIS-46 PH-9.4 GPM-8

5870.51ft: PVT:Flow and volume alarm snoozed 10 min
5870.51ft: PVT:Flow and volume alarm reactivated: snooze expired
5870.51ft: SURVEY 5824 INC .4 AZM 157.7 Connection at 5874.2
5870.51ft: ZDiffPressure from SideKick sk-04-09-1056
5870.51ft: PVT:Flow alarm snoozed 10 min

5893.14ft: PVT:Flow alarm reactivated: snooze expired

17:02 5930

17:06 5940

17:11 5950

17:16 5960

17:30 5970

17:37 5980

17:43 5990

17:48 6000

17:53 6010

17:59 6020

18:04 6030

18:10 6040

18:15 6050

Oct 09, 2013
02:15 6060

02:26 6070

02:34 6080

02:42 6090

02:48 6100

02:58 6110

03:03 6120

03:12 6130

03:17 6140

5961.94ft: PVT:Flow and volume alarm snoozed 10 min
5961.94ft: SURVEY @5915 INC 1 AZM 167.3
5961.94ft: Connection at 5966.0
5961.94ft: ZDiffPressure from SideKick sk-04-09-1056
5966.27ft: PVT:Flow and volume alarm reactivated: snooze cancelled

5971.82ft: MW-9.5 VIS-46 PH-9.4 GPM-8

6046.95ft: FILL TRIP TANK
6049.64ft: WT 9.5+/ VIS 46/ PH 9.8
6052.85ft: PVT:Flow alarm muted
6052.85ft: PVT Horn Disabled
6052.85ft: SURVEY @ 6007' INC 1.2 AZI 187.1
6052.85ft: ZERO ALL PUMPS from SideKick sk-06-03-3868
6052.85ft: PVT:Flow alarm reactivated: un-muted
6052.85ft: PVT Horn Enabled
6052.85ft: ZERO ALL PUMPS from SideKick sk-06-03-3868
6056.99ft: WT 9.5+/ VIS 45/ PH 9.8
6056.99ft: PVT:Flow and volume alarm muted
6056.99ft: FLOW CHECK
6056.99ft: ZERO ALL PUMPS from SideKick sk-06-03-3868
6056.99ft: PVT Horn Disabled
6056.99ft: PUMP OUT CELLAR
6056.99ft: WT 9.5+/ VIS 45/ PH 9.9
6056.99ft: ZERO ALL PUMPS from SideKick sk-04-09-1056
6056.99ft: ZERO ALL PUMPS from SideKick sk-04-09-1056
6056.99ft: WT 9.6/ VIS 45/ PH 9.8
6056.99ft: ZERO ALL PUMPS from SideKick sk-04-09-1056
6056.99ft: PVT:Flow alarm reactivated: un-muted
6056.99ft: PVT:Flow alarm muted
6056.99ft: PVT:Flow alarm reactivated: un-muted
6056.99ft: ZERO ALL PUMPS from SideKick sk-04-09-1056
6056.99ft: ZERO ALL PUMPS from SideKick sk-04-09-1056
6056.99ft: PVT:Flow alarm muted
6056.99ft: PVT:Flow alarm reactivated: un-muted
6056.99ft: ZERO ALL PUMPS from SideKick sk-04-09-1056
6056.99ft: PVT:Flow alarm muted
6056.99ft: ZERO ALL PUMPS from SideKick sk-04-09-1056
6056.99ft: Connection at 6057.7
6056.99ft: ZDiffPressure from SideKick sk-04-09-1056
6056.99ft: PVT:Flow alarm reactivated: un-muted
6059.32ft: ZERO ALL PUMPS from SideKick sk-04-09-1056
6060.66ft: PVT Horn Enabled
6063.39ft: WT 9.6/ VIS 46/ PH 9.5/ H2O 10 GPM

6115.39ft: WT 9.6/ VIS 46/ PH 9.5/ H2O 10 GPM

6148.62ft: Connection at 6149.2

6148.62ft: PVT:Flow alarm muted
6148.62ft: ZWOB from SideKick sk-04-09-1056
6148.62ft: SURVEY @ 6100' INC 1.6 AZI 200.2
6148.62ft: ZDiffPressure from SideKick sk-04-09-1056
6148.62ft: PVT:Flow alarm reactivated: un-muted

6178.54ft: WT 9.6/ VIS 45/ PH 9.7/ H2O 8 GPM

6193.37ft: DEFOAM MUD

6240.12ft: PVT:Flow alarm muted
6240.12ft: ZWOB from SideKick sk-04-09-1056
6240.12ft: Connection at 6240.9
6240.12ft: SURVEY @ 6190' INC .7 AZI 293.6
6240.12ft: ZDiffPressure from SideKick sk-04-09-1056
6240.12ft: PVT:Flow and volume alarm reactivated: un-muted

6266.44ft: WT 9.6/ VIS 45/ PH 10/ H2O 5 GPM

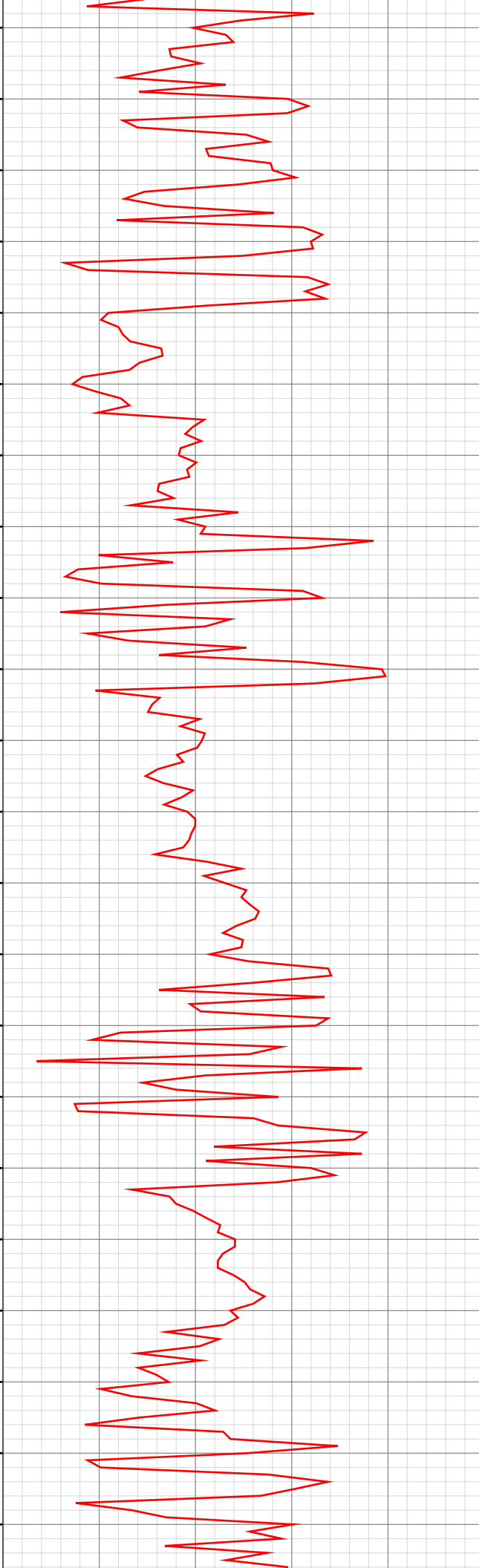
6331.69ft: Connection at 6332.5
6331.69ft: PVT:Flow and volume alarm muted
6331.69ft: SURVEY @6282 INC 1.1 AZM 325.2
6331.69ft: ZWOB from SideKick sk-04-09-1056
6334.94ft: vis43/wt9.6/ph10

6343.96ft: PUMP OUT CELLAR

03:33 6150
03:48 6160
03:58 6170
04:12 6180
04:18 6190
04:26 6200
04:34 6210
04:39 6220
04:46 6230
05:04 6240
05:09 6250
05:14 6260
05:21 6270
05:28 6280
05:34 6290
05:38 6300
05:44 6310
05:49 6320
05:55 6330
06:11 6340
06:19 6350
06:26 6360



06:34 6370
06:41 6380
06:46 6390
06:52 6400
06:59 6410
07:10 6420
07:28 6430
07:35 6440
07:43 6450
07:50 6460
07:57 6470
08:04 6480
08:10 6490
08:15 6500
08:19 6510
08:36 6520
08:43 6530
08:49 6540
08:53 6550
09:00 6560
09:07 6570
09:16 6580



6423.33ft: Connection at 6424.4
6423.33ft: SURVEY @6373 INC 1.1 AZM 305.5

6473.69ft: VIS43/WT9.6

6514.67ft: Connection at 6515.8
6514.67ft: ZDiffPressure from SideKick sk-04-09-1056
6514.67ft: ZWOB from SideKick sk-04-09-1056

6550.23ft: VIS44/WT9.6

09:22 6590
09:28 6600
09:47 6610
09:56 6620
10:08 6630
10:13 6640
10:18 6650
10:25 6660
10:30 6670
10:36 6680
10:43 6690
10:57 6700
11:03 6710
11:12 6720
11:19 6730
11:27 6740
11:31 6750
11:40 6760
11:47 6770
11:56 6780
12:11 6790
12:18 6800

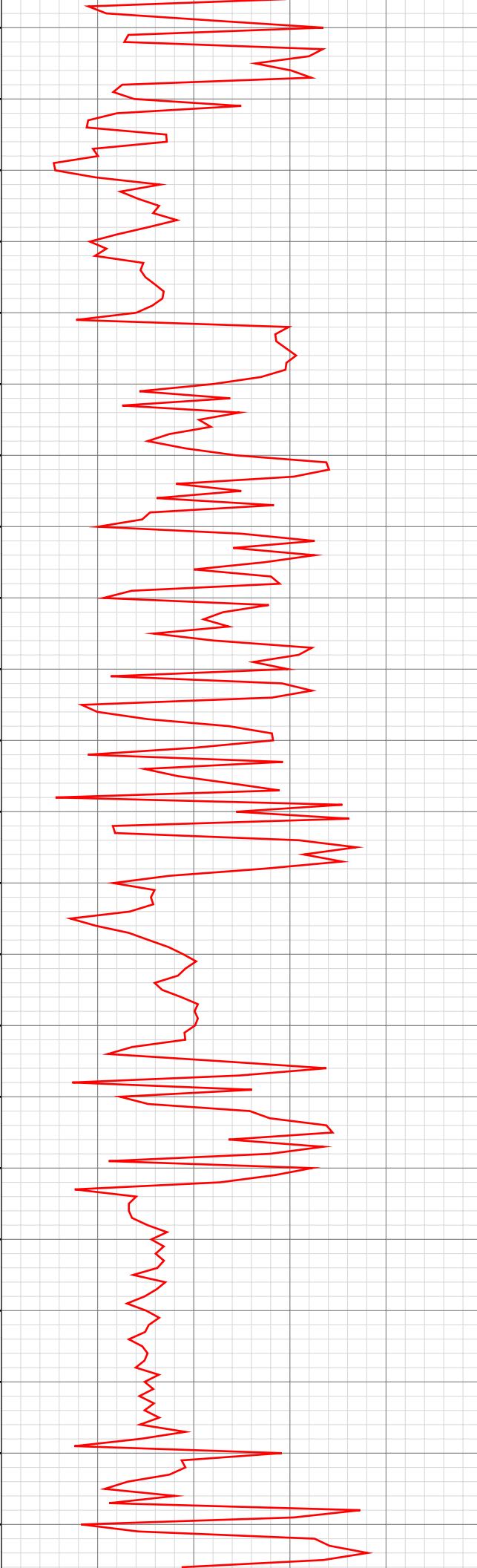
6606.23ft: Connection at 6607.4
6608.56ft: SURVEY @6557 INC 1.6 AZM 293.4
6613.29ft: VIS43/WT9.6

6697.18ft: SURVEY @6648 INC .5 AZM 161.5
6697.18ft: Connection at 6698.9
6697.18ft: ZWOB from SideKick sk-04-09-1056

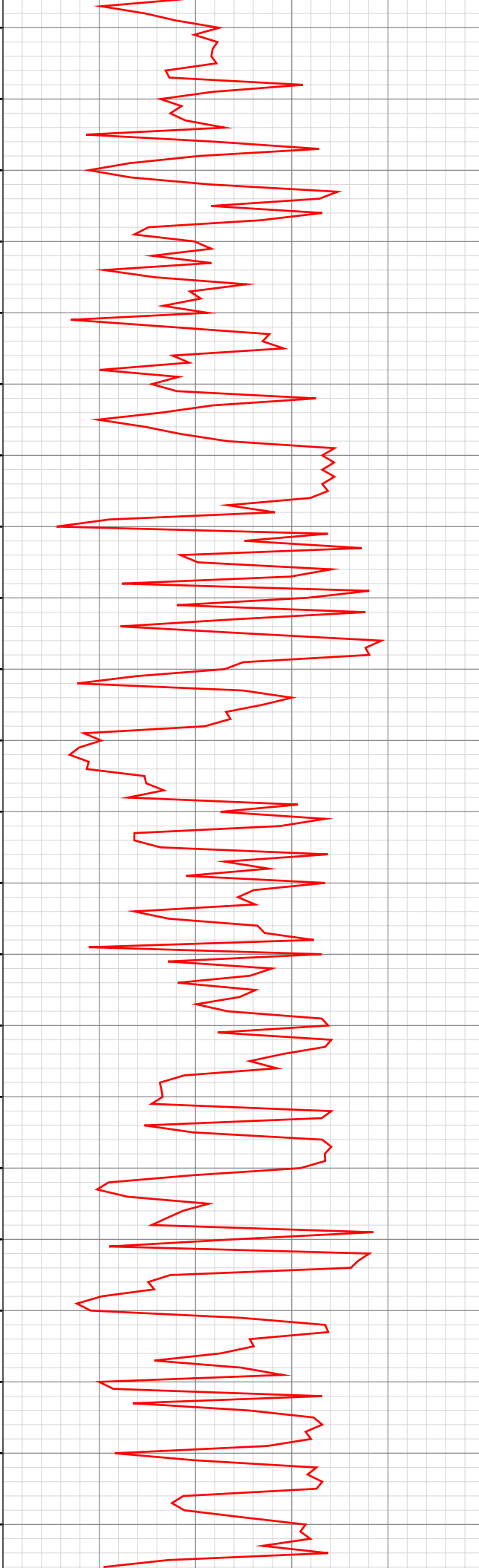
6709.45ft: VIS44/WT9.6

6778.84ft: VIS45/WT9.7

6788.52ft: Connection at 6790.7
6788.52ft: SURVEY @6740 INC 1.1 AZM 185.4



12:24 6810
12:30 6820
12:38 6830
12:44 6840
12:50 6850
12:57 6860
13:04 6870
13:17 6880
13:22 6890
13:26 6900
13:34 6910
13:44 6920
13:50 6930
13:57 6940
14:01 6950
14:06 6960
14:11 6970
14:27 6980
14:34 6990
14:39 7000
14:45 7010
14:50 7020



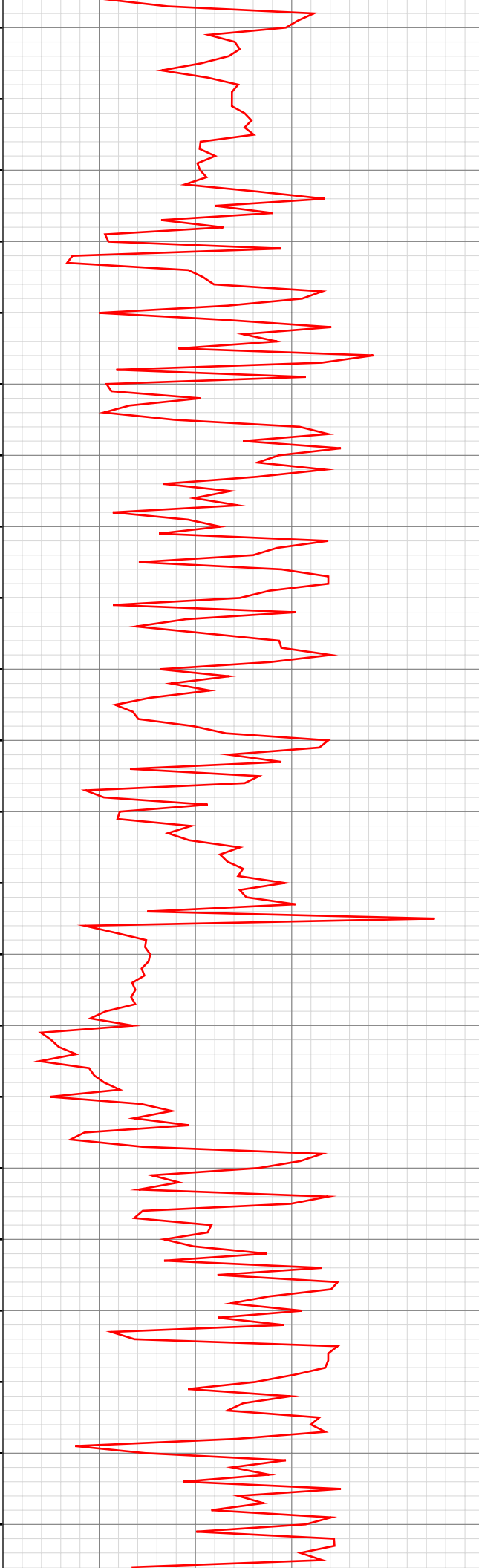
6875.10ft: VIS45/WT9.8
6879.82ft: Connection at 6882.3
6879.82ft: SURVEY @6832 INC 1.5 AZM 194.5

6953.61ft: VIS44/WT9.8

6971.33ft: Connection at 6974.0
6971.33ft: ZWOB from SideKick sk-04-09-1056
6971.33ft: ZDiffPressure from SideKick sk-04-09-1056
6971.72ft: SURVEY @6924 INC 1.7 AZM 190.9

7016.93ft: VIS45/WT9.8

14:56 7030
15:01 7040
15:06 7050
15:13 7060
15:27 7070
15:34 7080
15:40 7090
15:45 7100
15:50 7110
15:56 7120
16:03 7130
16:11 7140
16:16 7150
16:29 7160
16:38 7170
16:59 7180
17:08 7190
17:13 7200
17:18 7210
17:23 7220
17:30 7230
17:34 7240



7062.57ft: Connection at 7065.4
7062.83ft: SURVEY @7015 INC 2.3 AZM 191.3

7136.65ft: VIS46/WT9.95

7153.97ft: Connection at 7156.6
7153.97ft: SURVEY @7106 INC 2.2 AZM 197.5

7179.49ft: VIS46/WT9.9

7245.24ft: Connection at 7248.2

7245.24ft: ZDiffPressure from SideKick sk-04-09-1056

17:52 7250

18:01 7260

18:10 7270

7271.72ft: MUD WT.-9.95 VIS-47 PH-9.3 H2O 8 GPM

18:18 7280

18:25 7290

7292.29ft: ZDiffPressure from SideKick sk-04-09-1056
7292.29ft: ZWOB from SideKick sk-04-09-1056
7292.29ft: SURVEY @ 7198' INC .8 AZI 181.1

18:32 7300

18:41 7310

18:49 7320

18:55 7330

7336.81ft: MUD WT.-9.9 VIS-45 PH-9.2 H2O- 8 GPM
7336.81ft: SURVEY @ 7289' INC .6 AZI 40.6
7336.81ft: ZDiffPressure from SideKick sk-04-09-1056
7336.81ft: Connection at 7339.9

19:09 7340

19:13 7350

19:17 7360

19:20 7370

19:24 7380

19:29 7390

19:37 7400

19:43 7410

19:50 7420

7423.39ft: MUD WT.-9.9 VIS-45 PH-9.1 H2O- 8 GPM
7428.12ft: SURVEY @ 7381' INC 1.3 AZI 34.8
7428.12ft: ZDiffPressure from SideKick sk-04-09-1056
7428.12ft: ZWOB from SideKick sk-04-09-1056
7428.41ft: Connection at 7431.5

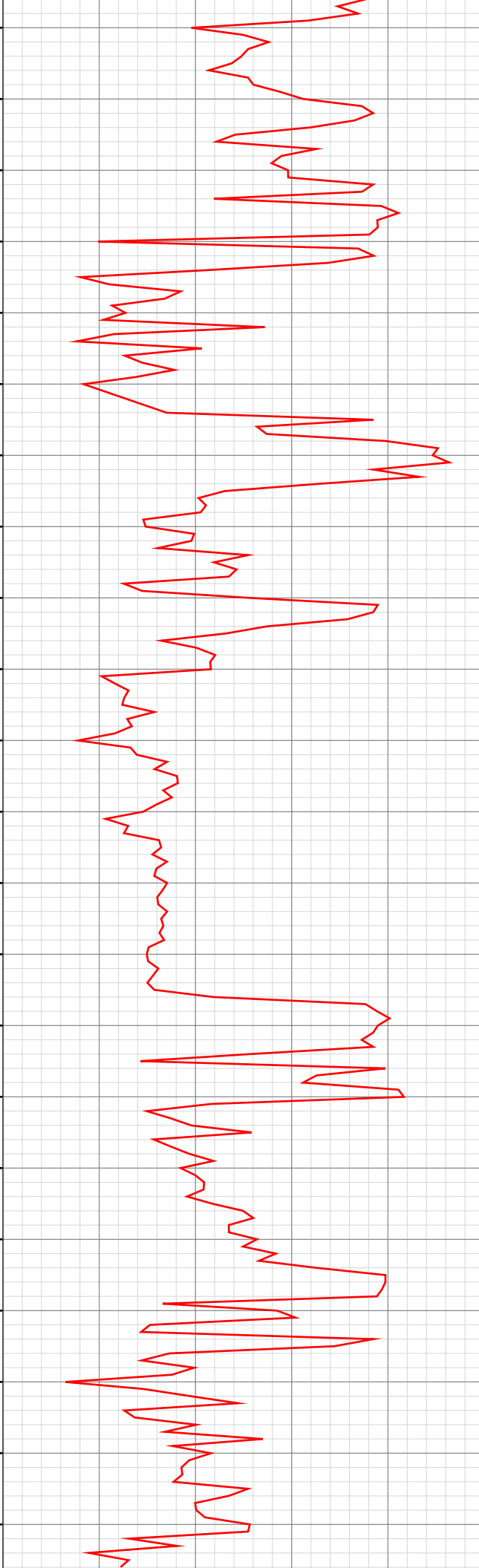
20:12 7430

20:19 7440

20:24 7450

20:29 7460

20:34 7470
20:39 7480
20:43 7490
20:47 7500
20:54 7510
21:11 7520
21:14 7530
21:20 7540
21:25 7550
21:30 7560
21:41 7570
21:49 7580
21:57 7590
22:04 7600
22:09 7610
22:21 7620
22:28 7630
22:33 7640
22:37 7650
22:44 7660
22:51 7670
22:57 7680



7519.00ft: MUD WT.-9.95 VIS-45 PH-9.1 H20- 8 GPM
7519.42ft: SURVEY @ 7472' INC .6 AZI 44.8 Connection at 7523.2
7519.42ft: ZWOB from SideKick sk-04-09-1056 ZDiffPressure from SideKick sk-04-09-1056
7519.42ft: ZWOB from SideKick sk-04-09-1056 ZDiffPressure from SideKick sk-04-09-1056
7520.47ft: IN TALLY: HOLE DEPTH SET TO 7523.2

7599.70ft: MUD WT.-9.95 VIS-47 PH-9.1 H20- 4 GPM

7613.39ft: SURVEY @ 7564' INC .7 AZI 24.6
7613.39ft: Connection at 7614.8
7613.39ft: ZDiffPressure from SideKick sk-04-09-1056

7683.40ft: MUD WT.-9.95 VIS-48 PH-9.1 H20- 4GPM

23:06 7690
23:12 7700
23:26 7710
23:33 7720
23:42 7730
23:45 7740
23:50 7750
23:59 7760
00:09 7770
00:14 7780
00:18 7790
00:31 7800
00:37 7810
00:43 7820
00:50 7830
00:55 7840
01:01 7850
01:08 7860
01:17 7870
01:26 7880
01:41 7890
01:48 7900

7704.89ft: SURVEY @ 7655' INC .8 AZI 44
7704.89ft: ZDiffPressure from SideKick sk-04-09-1056 Connection at 7706.8
7704.89ft: ZWOB from SideKick sk-04-09-1056

7763.29ft: MUD WT.-9.95 VIS-48 PH-9.0 H2O- 4GPM

7769.72ft: FILL TRIP TANK

7796.33ft: SURVEY @ 7746' INC .6 AZI 52.5
7796.33ft: ZDiffPressure from SideKick sk-04-09-1056
7796.33ft: Connection at 7798.2
7797.38ft: IN TALLY: HOLE DEPTH SET TO 7798.2

7849.15ft: MUD WT.-9.9 VIS-46 PH-9.2 H2O- 4GPM

7888.06ft: SURVEY @ 7837' INC .8 AZI 33
7888.06ft: ZDiffPressure from SideKick sk-04-09-1056
7888.19ft: Connection at 7889.9
7889.17ft: IN TALLY: HOLE DEPTH SET TO 7889.9

Oct 10, 2013

01:57 7910
02:03 7920
02:13 7930
02:22 7940
02:29 7950

7960



7909.51ft: MUD WT.-9.95 VIS-46 PH-9.1 H2O- 8 GPM

7950.03ft: SURVEY @ 7900' INC 1.5 AZI 186.5
7950.03ft: SURVEY EDIT @ 7900' INC .8 AZI 24.3
7950.03ft: ZWOB from SideKick sk-04-09-1056
7950.03ft: ZDiffPressure from SideKick sk-04-09-1056
7950.03ft: VIS45/WT10
7950.03ft: ZERO ALL PUMPS from SideKick sk-06-03-3868
7950.03ft: FLOW CHECK
7950.03ft: PUMP OUT CELLAR
7950.03ft: FILL TRIP TANK
7950.03ft: PULL ROT RUBBER/ FLOW CHECK
7950.03ft: BIT DEPTH CHANGED TO 1335.0 FEET
7950.03ft: INSTALL ROT RUBBER/FILL PIPE AND CIRC.
7950.03ft: BIT DEPTH CHANGED TO 4347.0 FEET
7950.03ft: VIS50/WT10
7950.03ft: MUD WT.-9.95 VIS-44 PH-8.8
7950.03ft: MUD WT.-9.95 VIS-40
7950.03ft: ZDiffPressure from SideKick sk-04-09-1056