

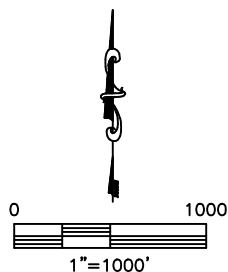
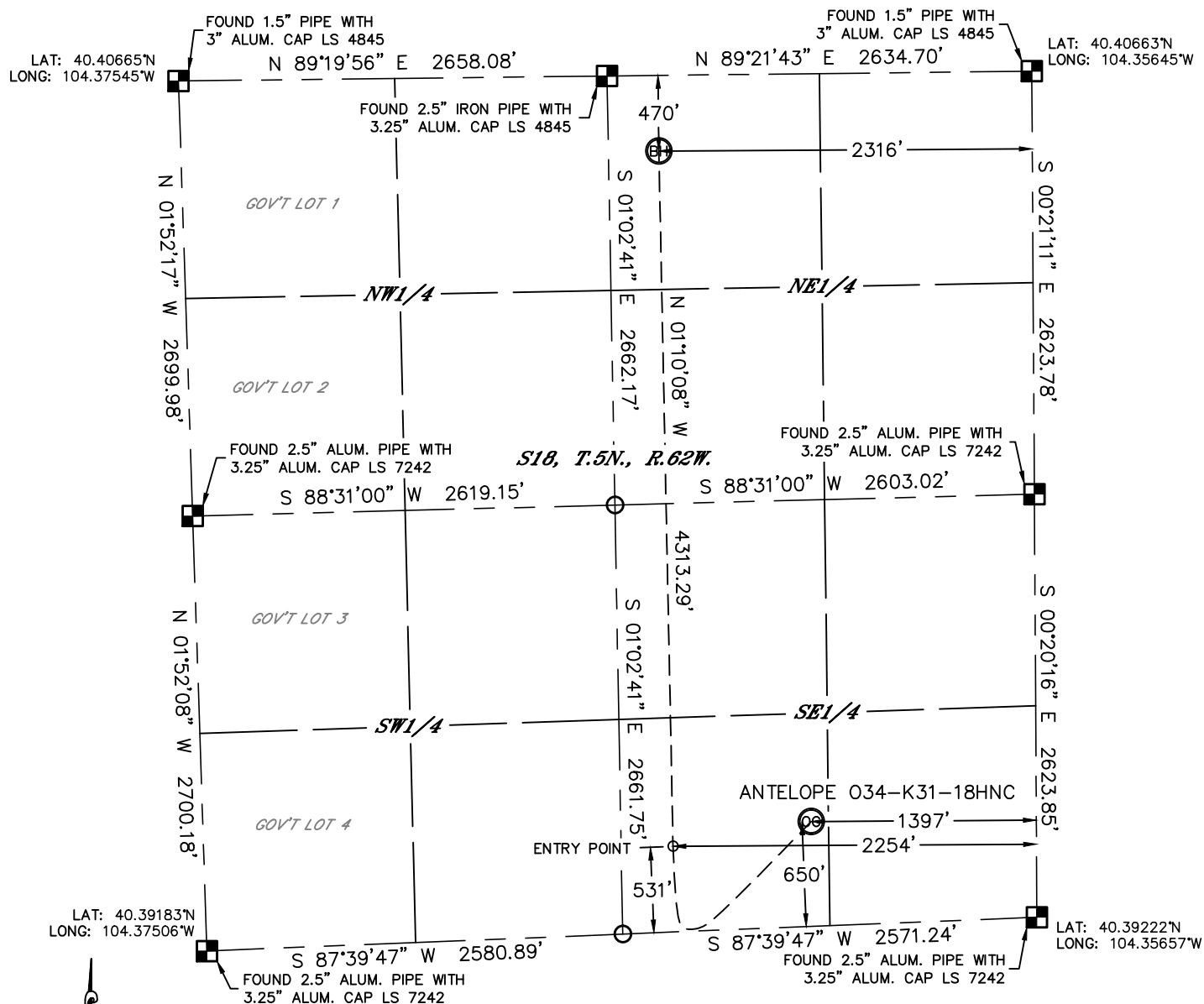


Lat40°, Inc. 1635 Foxtrail Drive, Suite 325 Loveland, CO 970-776-3321

# WELL LOCATION CERTIFICATE

THIS MAP DOES NOT REPRESENT A BOUNDARY SURVEY

SECTION: 18  
TOWNSHIP: 5N  
RANGE: 62W



In accordance with a request from Keith Caplan with BONANZA CREEK ENERGY, INC. Lat40°, Inc. has determined the surface location of the ANTELOPE 034-K31-18HNC to be 650' from the SOUTH line and 1397' from the EAST line and the bottom hole to be 470' from the NORTH line and 2316' from the EAST line as measured at right angles from the section lines of Section 18, Township 5 North, Range 62 West of the Sixth Principal Meridian, County of Weld, State of Colorado.

I hereby state that this Well Location Certificate was prepared by me, or under my direct supervision, that the fieldwork was completed on 9/19/2013, for and on behalf of BONANZA CREEK ENERGY, INC. That this is not a Land Survey Plat or an Improvement Survey Plat, and that it is not to be relied upon for establishment of fence, building, or other future improvement lines.

## NOTE:

- 1) Bearings shown are Grid Bearings of the Colorado State Plane Coordinate System, North Zone, North American Datum 1983/2007. The lineal dimensions as contained herein are based upon the "U.S. Survey Foot."
- 2) Ground elevations are based on an observed GPS elevation (NAVD 1988 DATUM).
- 3) IMPROVEMENTS: See LOCATION DRAWING for all visible improvements within 400' of disturbed area.
- 4) SURFACE USE: RANGELAND
- 5) INSTRUMENT OPERATOR: WYATT HALL
- 6) NEAREST CULTURAL ITEMS  
BUILDING: 1545' W  
BUILDING UNIT: 5280'+  
HIGH OCCUPANCY BUILDING UNIT: 5280'+  
DESIGNATED OUTSIDE ACTIVITY AREA: 5280'+  
PUBLIC ROAD: 5280'+  
ABOVE GROUND UTILITY: 1291' NW  
RAILROAD: 5280'+  
PROPERTY LINE: 650' S

## LEGEND

- = ALIQUOT MONUMENT AS DESCRIBED
- = CALCULATED POSITION

## SURFACE LOCATION

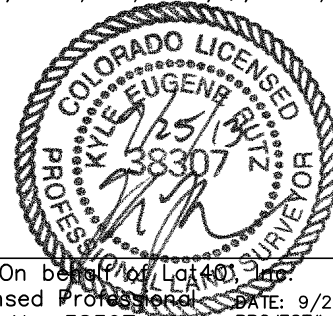
LAT: 40.39390°N  
LONG: 104.36158°W  
PDOP: 2.2  
ELEV: 4634'  
1/4,1/4: SW1/4SE1/4

## ENTRY POINT

LAT: 40.39351°N  
LONG: 104.36465°W  
1/4,1/4: SW1/4SE1/4

## BOTTOM HOLE

LAT: 40.40535°N  
LONG: 104.36477°W  
1/4,1/4: NW1/4NE1/4



Kyle E. Rutz—On behalf of Lat40°, Inc.  
Colorado Licensed Professional Surveyor No. 38307  
DATE: 9/24/2013  
PROJECT#: 2012071