

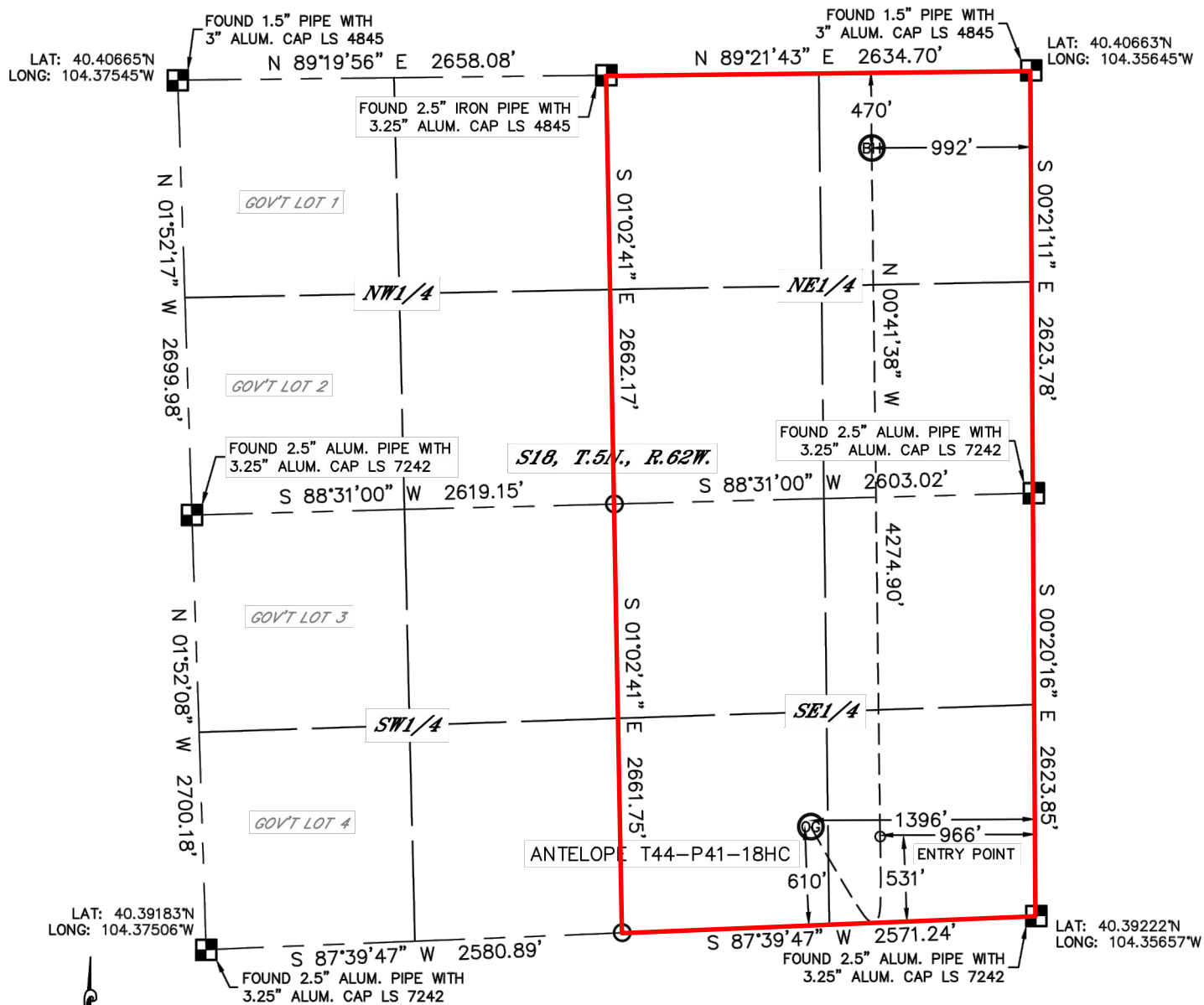


Lat40°, Inc. 1635 Foxtrail Drive, Suite 325 Loveland, CO 970-776-3321

WELL LOCATION CERTIFICATE

THIS MAP DOES NOT REPRESENT A BOUNDARY SURVEY

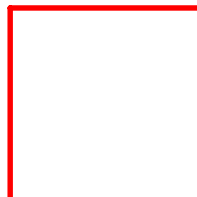
SECTION: 18
TOWNSHIP: 5N
RANGE: 62W



In accordance with a request from Keith Caplan with BONANZA CREEK ENERGY, INC. Lat40°, Inc. has determined the surface location of the ANTELOPE T44-P41-18HC to be 610' from the SOUTH line and 1396' from the EAST line and the bottom hole to be 470' from the NORTH line and 992' from the EAST line.



BONANZA CREEK



Wellbore Spacing Unit Outline



Wellbore Spacing Unit Map

29 October 2013 ksc

Antelope T44-P41-18HC
E/2 Sec 18 T5N R62W 6th PM
Weld County, Colorado