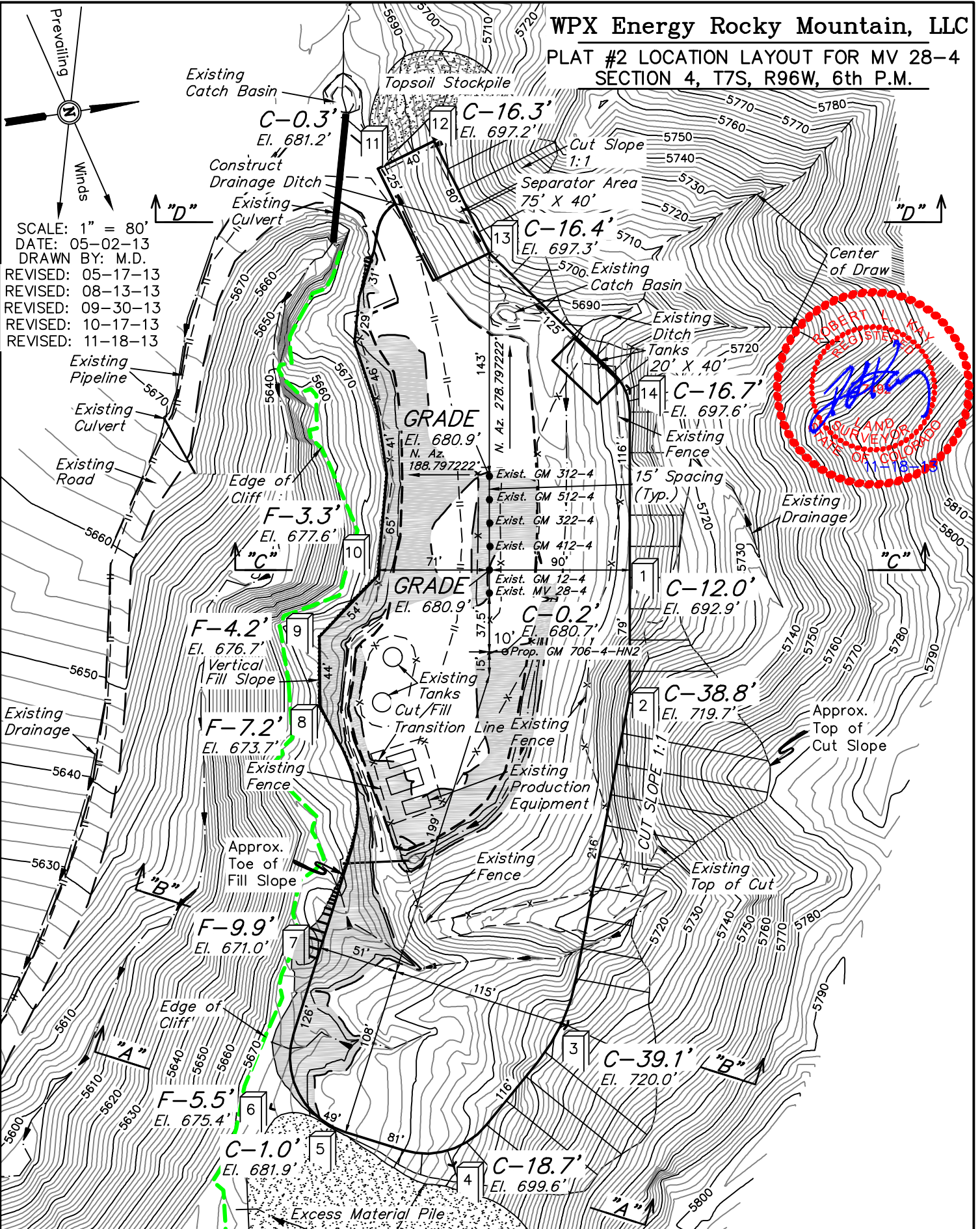


WPX Energy Rocky Mountain, LLC

PLAT #2 LOCATION LAYOUT FOR MV 28-4
SECTION 4, T7S, R96W, 6th P.M.



Elev. Graded Ground At MV 28-4 Well Head = 5680.9'

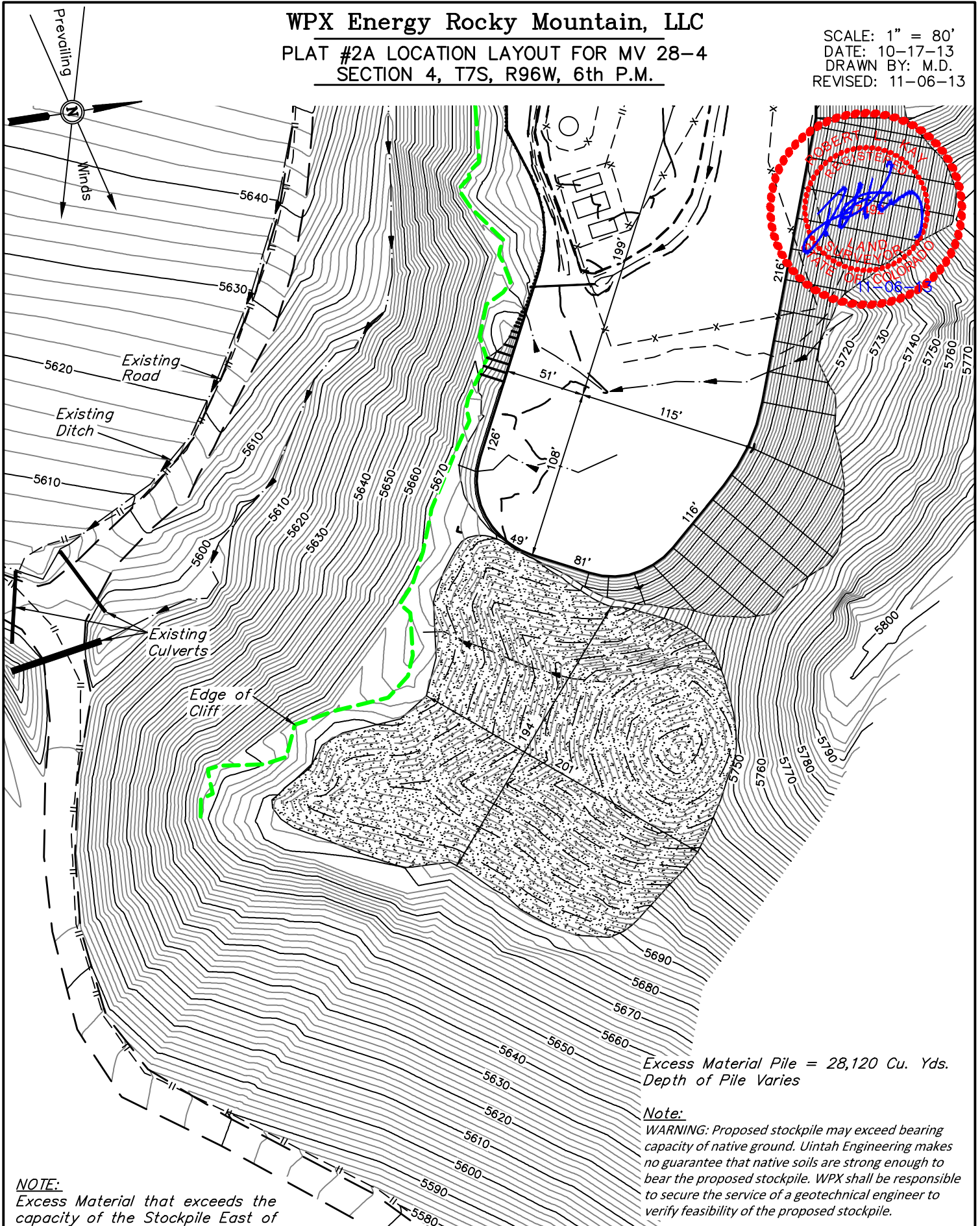
FINISHED GRADE ELEV. AT MV 28-4 WELL HEAD= 5680.9'

UINTAH ENGINEERING & LAND SURVEYING
85 So. 200 East * Vernal, Utah 84078 * (435) 789-1017

WPX Energy Rocky Mountain, LLC

PLAT #2A LOCATION LAYOUT FOR MV 28-4
SECTION 4, T7S, R96W, 6th P.M.

SCALE: 1" = 80'
DATE: 10-17-13
DRAWN BY: M.D.
REVISED: 11-06-13



Excess Material Pile = 28,120 Cu. Yds.
Depth of Pile Varies

Note:

WARNING: Proposed stockpile may exceed bearing capacity of native ground. Uintah Engineering makes no guarantee that native soils are strong enough to bear the proposed stockpile. WPX shall be responsible to secure the service of a geotechnical engineer to verify feasibility of the proposed stockpile.

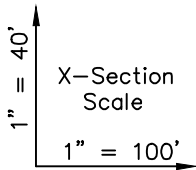
NOTE:

Excess Material that exceeds the capacity of the Stockpile East of the Pad will be used for road Maintenance or will be Stockpiled on the Riley Gulch Frac. Pad.

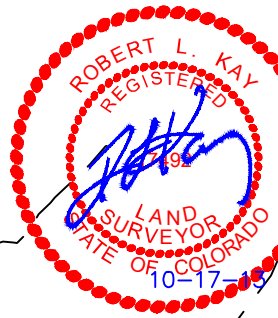
UINTAH ENGINEERING & LAND SURVEYING
85 So. 200 East * Vernal, Utah 84078 * (435) 789-1017

WPX Energy Rocky Mountain, LLC

PLAT #3 CROSS SECTIONS FOR MV 28-4 SECTION 4, T7S, R96W, 6th P.M.



DATE: 05-02-13
DRAWN BY: M.D.
REVISED: 05-16-13
REVISED: 06-17-13
REVISED: 08-13-13
REVISED: 09-30-13
REVISED: 10-17-13

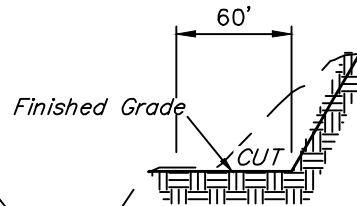


NOTE:

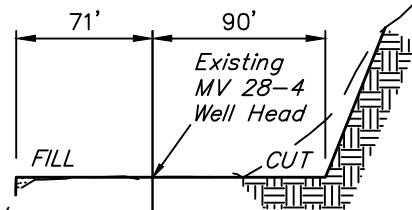
*1. VERTICAL SLOPE WILL REQUIRE A RETAINING WALL DESIGN. IT IS RECOMMENDED THAT A GEOTECHNICAL ENGINEER BE CONTACTED TO PERFORM A SUBSURFACE SITE INVESTIGATION. UPON COMPLETION OF THE SUBSURFACE INVESTIGATION CONTACT UELS TO PROVIDE CONSTRUCTION DETAILS AND PLANS TO CONSTRUCT A RETAINING WALL.

RETAINING WALL OPTIONS MAY INCLUDE: CONCRETE STEMWALL, USE WALL, SOIL TIEBACKS (NAILS).

*2. A GEOTECHNICAL ENGINEER SHALL PERFORM A SITE INVESTIGATION TO VERIFY THAT THE NATIVE MATERIAL WILL BE STABLE AT A 1:1 SLOPE.



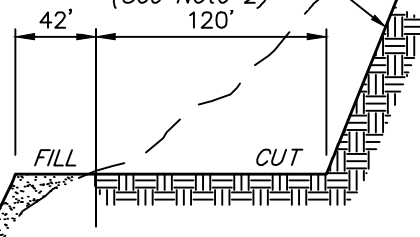
"D"-D"



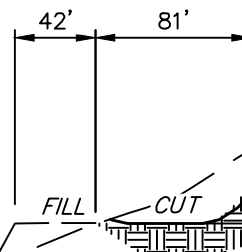
"C"-C"

Cut Slope = 1:1
(See Note 2)

Fill Slope = Varies
From 1 1/2:1 to
Vertical
(See Note 1)



"B"-B"



"A"-A"

Preconstruction
Grade

APPROXIMATE YARDAGES

(6") Topsoil Stripping (New Construction Only)	=	2,160 Cu. Yds.
Remaining Location	=	36,880 Cu. Yds.
TOTAL CUT	=	39,040 CU. YDS.
FILL	=	1,950 CU. YDS.
EXCESS MATERIAL	=	37,090 Cu. Yds.
Topsoil	=	2,160 Cu. Yds.
TOTAL EXCESS UNBALANCE (After Interim Rehabilitation)	=	34,930 Cu. Yds.