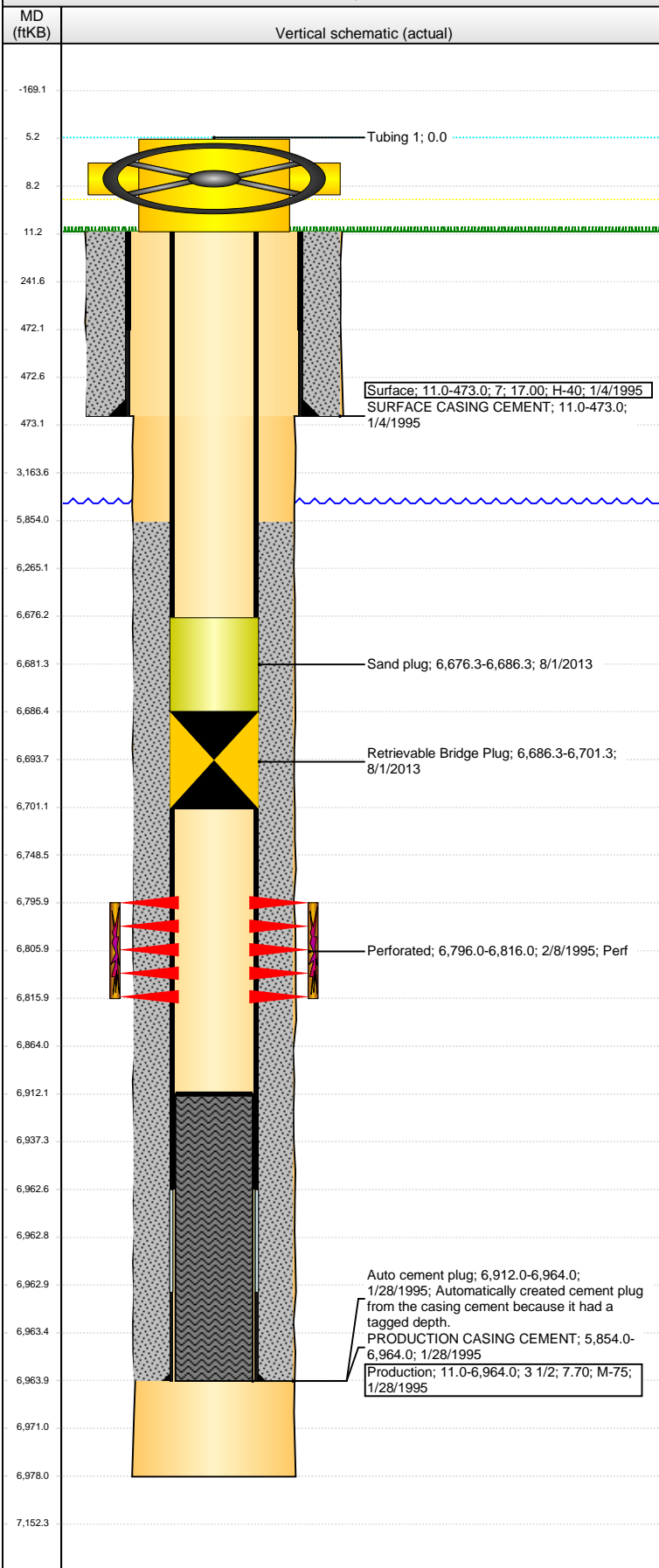


**Well Name: UPV 27-05G3**

VERTICAL - ORIGINAL HOLE, 11/21/2013 8:36:41 AM



Well Header									
API		Business Unit		District		Well Config			
05-123-18780		WATTENBERG		15		VERTICAL			
Original KB Elevation (ft)		KB - GL / MSL (ftKB)		Spud Date		P & A Date			
4,806.00		11.00		1/3/1995					
Comment									
Directions To Well									
WCR 67 & WCR 68. E 0.2. S 1.4 TO 2ND CATTLE GUARD. W TO TANK BATTERY. S 0.2 INTO LOCATION.									
Congressional Location									
Quarter 1	Quarter 2	Quarter 3	Quarter 4	Section	Township	Twnshp N...	Range	Rng E/W Dir	
		SW	NW	27	6 N		63	W	
Bottom Hole Location									
North-South Distance (ft)		From N or S Line		East-West Distance (ft)		From E or W Line			
Plug Back Total Depths									
Date	Depth (ftKB)	Method		Com					
1/28/1995	6,912.0	CASING TALLY		LATCH DOWN COLLAR					
2/5/1995	6,912.0	CASED HOLE LOG		DEPTH LOGGER					
Wellbore Sections									
Section Des		Size (in)		Act Top, MD (ftKB)		Act Btm, MD (ftKB)			
SURFACE		9 7/8		11.0		473.0			
PRODUCTION		6 1/4		473.0		6,978.0			
Zone Statuses									
Zone Name		Status Date		Status		Job			
CODELL		2/8/1995		PR		DRILLING/COMPLETION - ORIGINAL, 1/3/1995 00:00			
Casing Strings									
Surface, 473.0ftKB									
Casing Description		Run Date	OD (in)	Wt/Len (l...)	Grade	Top, MD (ft...)	MD (ftKB)		
Surface		1/4/1995	7	17.00	H-40	11.0	473.0		
Production, 6,964.0ftKB									
Casing Description		Run Date	OD (in)	Wt/Len (l...)	Grade	Top, MD (ft...)	MD (ftKB)		
Production		1/28/1995	3 1/2	7.70	M-75	11.0	6,964.0		
Cement									
Description					Top Depth (ftKB)		Bottom Depth (ftKB)		
SURFACE CASING CEMENT					11.0		473.0		
Description					Top Depth (ftKB)		Bottom Depth (ftKB)		
PRODUCTION CASING CEMENT					5,854.0		6,964.0		
Tubing Components									
Item Des		OD (in)	Wt (lb/ft)	Grade	Jts	Len (ft)	Btm (ftKB)	Btm (TVD) (ftKB)	
Perforation Data									
Zone		Bnch/St g	Entered Shot Total	Top (ftKB)	Btm (ftKB)	Date			
CODELL, ORIGINAL HOLE			40	6,796.00	6,816.00	2/8/1995			
Stimulations & Treatments									
Date		Zone		Primary Job Type					
3/4/1995		CODELL, ORIGINAL HOLE		DRILLING/COMPLETION - ORIGINAL					
Technical Result			Tech Result Details			Tech Result Note			
Comment									
FRAC CODELL									
Other In Hole									
Run Date		Des			OD (in)	Top (ftKB)	Btm (ftKB)		
8/1/2013		Retrievable Bridge Plug			3 1/2	6,686.3	6,701.3		
8/1/2013		Sand plug			3 1/2	6,676.3	6,686.3		
Logs									
Date		Type			Top, MD (ftKB)	Btm, MD (ftKB)			
1/29/1995		Compensated Density			3,500.0	6,974.0			
1/29/1995		Induction			484.0	6,976.0			
2/5/1995		Cement Bond			5,600.0	6,912.0			
4/21/2013		GYRO			11.0	6,750.0			