

T7N, R63W, 6th. P.M.

GREAT WESTERN OIL & GAS COMPANY

Well location, SPAUR BROTHERS EH #31-262HN, located as shown in the NE 1/4 SE 1/4 of Section 31, T7N, R63W, 6th P.M., Weld County, Colorado.

BASIS OF ELEVATION

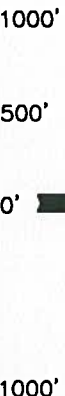
USGS COOPERATIVE BASE NETWORK CONTROL STATION, DESIGNATION 'M414', NGS DATA SHEET LISTS THE NAD83 88 ELEVATION AS BEING 4600.58 FEET

BASIS OF BEARINGS

BASIS OF BEARINGS IS A G.P.S. OBSERVATION.

LEGEND:

- └ = 90° SYMBOL
- = PROPOSED WELL HEAD.
- ▲ = SECTION CORNERS LOCATED.
- ◇ = ENTRY POINT
- = TARGET BOTTOM HOLE



SCALE

CERTIFICATE

THIS IS TO CERTIFY THAT THE ABOVE PLATS WERE PREPARED FROM FIELD NOTES OF ACTUAL SURVEYS MADE BY ME OR UNDER MY SUPERVISION AND THAT THE SAME ARE TRUE AND CORRECT TO THE BEST OF MY KNOWLEDGE AND BELIEF.

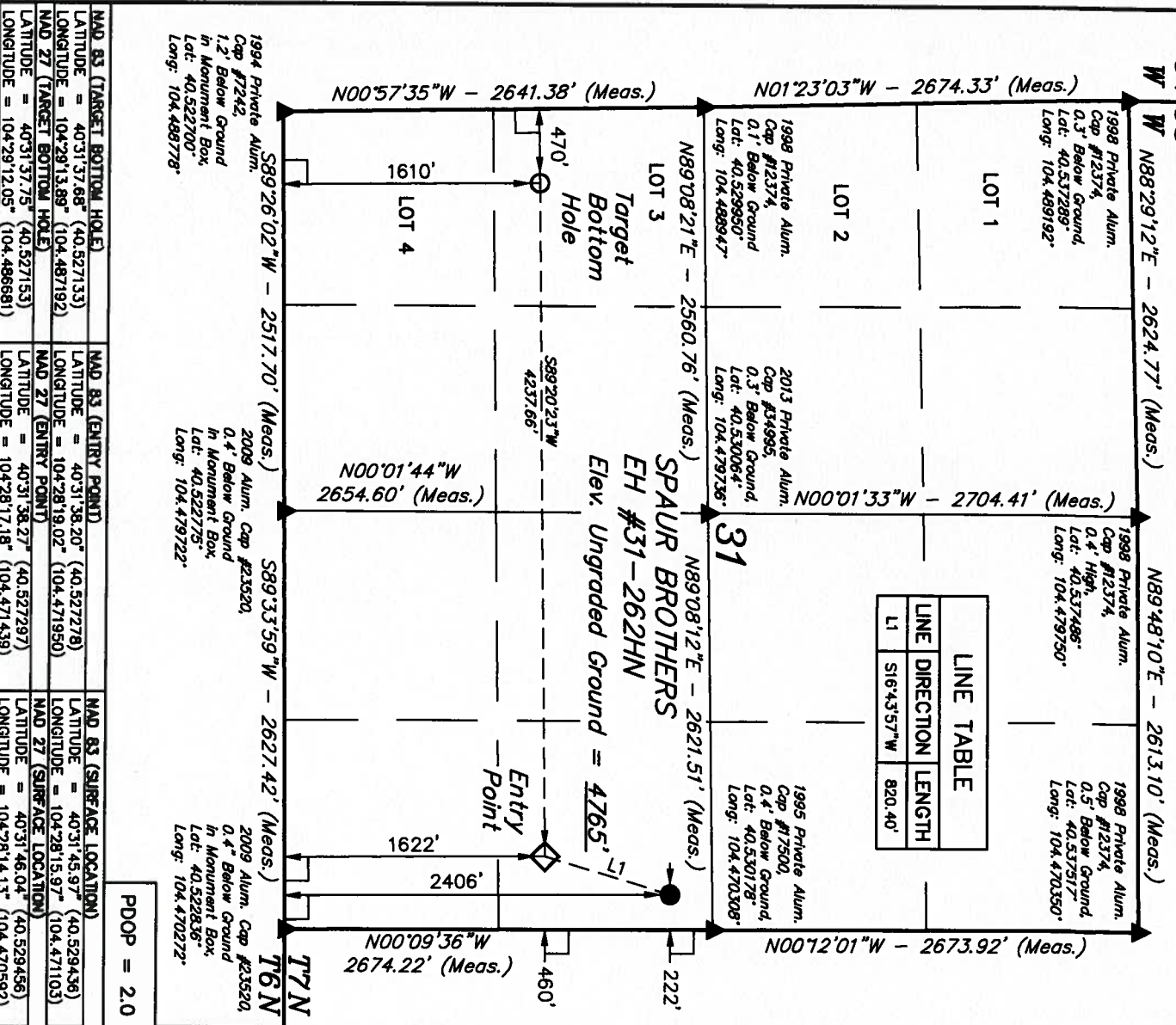
REGISTERED LAND SURVEYOR  
STATE OF COLORADO  
09-17-13

UINTAH ENGINEERING & LAND SURVEYING  
86 SOUTH 200 EAST - VERNAL, UTAH 84078  
(435) 789-1017

SCALE 1" = 1000'  
DATE SURVEYED: 08-29-13 DATE DRAWN: 09-14-13

PARTY Z.B. A.G. H.K.W.  
REFERENCES C.L.O. PLAT

WEATHER HOT  
FILE GREAT WESTERN OIL & GAS COMPANY



1994 Private Alum.  
Cap #12374  
0.3' Below Ground.  
Lat: 40.537289°  
Long: 104.489192°

1998 Private Alum.  
Cap #12374  
0.4' High.  
Lat: 40.537486°  
Long: 104.479750°

1998 Private Alum.  
Cap #12374  
0.5' Below Ground.  
Lat: 40.537517°  
Long: 104.470350°

2013 Private Alum.  
Cap #34995.  
0.3' Below Ground.  
Lat: 40.530064°  
Long: 104.479736°

1995 Private Alum.  
Cap #17500.  
0.4' Below Ground.  
Lat: 40.530178°  
Long: 104.470308°

2009 Alum. Cap #23520.  
0.4' Below Ground  
In Monument Box.  
Lat: 40.522775°  
Long: 104.479722°

2009 Alum. Cap #23520.  
0.4' Below Ground  
In Monument Box.  
Lat: 40.522836°  
Long: 104.470272°

1994 Private Alum.  
Cap #12374.  
0.3' Below Ground  
In Monument Box.  
Lat: 40.522700°  
Long: 104.489778°