

GREAT WESTERN OIL & GAS COMPANY
 SPAUR BROTHERS EH #31-262HN, #31-259HC, #31-222HN & #31-219HN
 LOCATED IN WELD COUNTY, COLORADO
 SECTION 31, T7N, R63W, 6th P.M.

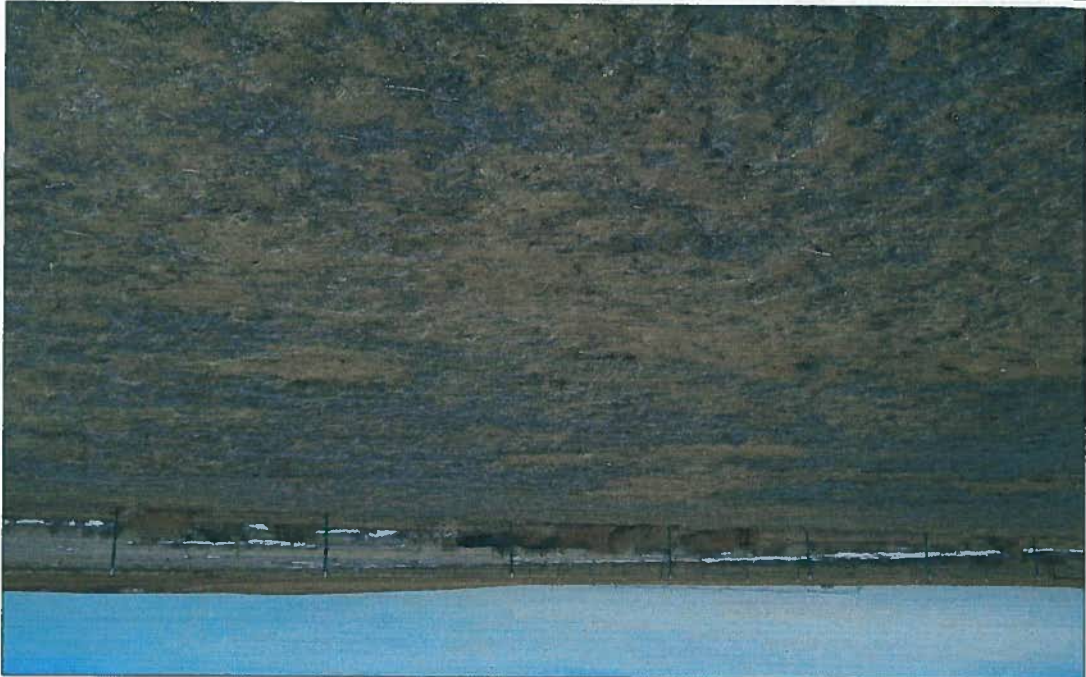


PHOTO: VIEW OF REFERENCE AREA

CAMERA ANGLE: NORTHERLY



PHOTO: VIEW OF REFERENCE AREA

CAMERA ANGLE: EASTERLY

REFERENCE AREA		PHOTOS		TAKEN BY: Z.B.		DRAWN BY: C.T.		REV: 9-16-13 J.L.G.	
01		11		11		13		YEAR	
01		11		11		13		MONTH	
01		11		11		13		DAY	
01		11		11		13		YEAR	
REF1 PHOTO									

Utah Engineering & Land Surveying
 85 South 200 East Vernal, Utah 84078
 (435) 789-1017 * FAX (435) 789-1813

GREAT WESTERN OIL & GAS COMPANY
 SPAUR BROTHERS EH #31-262HN, #31-259HC, #31-222HN & #31-219HN
 LOCATED IN WELD COUNTY, COLORADO
 SECTION 31, T7N, R63W, 6th P.M.

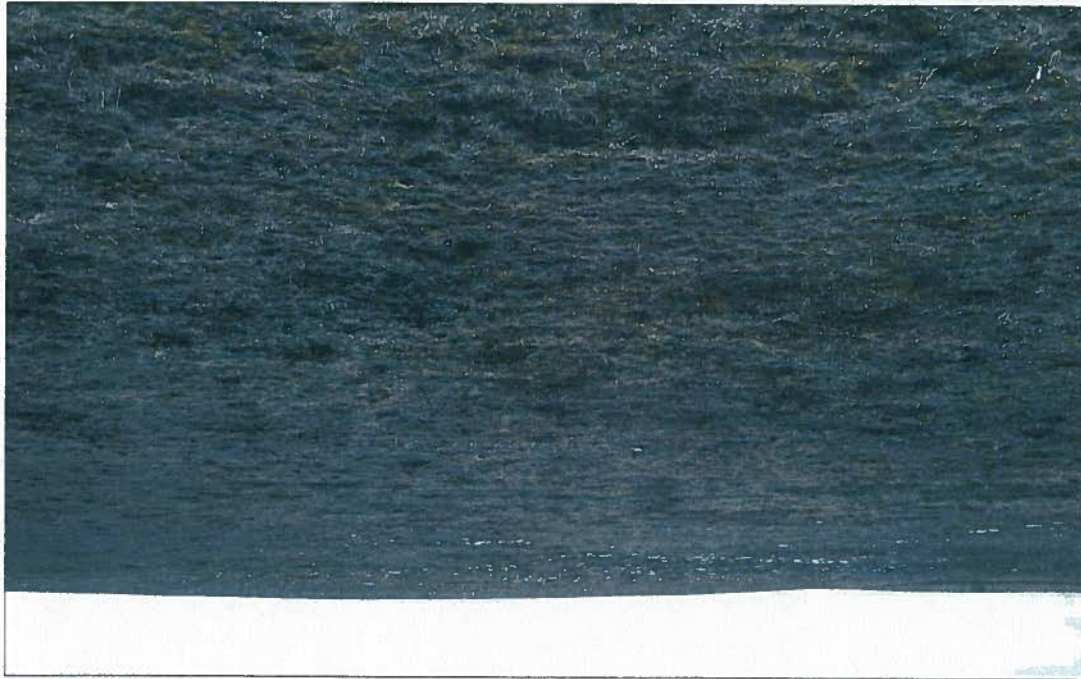


PHOTO: VIEW OF REFERENCE AREA

CAMERA ANGLE: SOUTHERLY

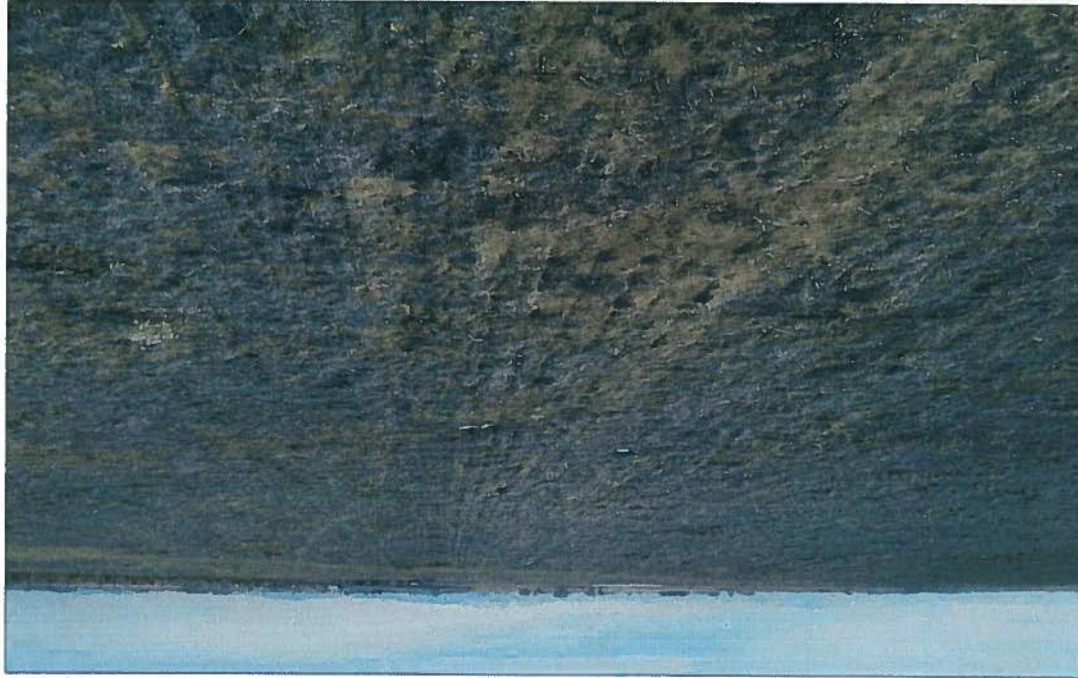


PHOTO: VIEW OF REFERENCE AREA

CAMERA ANGLE: WESTERLY

Untah Engineering & Land Surveying
 85 South 200 East Vernal, Utah 84078
 (435) 789-1017 * FAX (435) 789-1813



REFERENCE AREA		PHOTOS		TAKEN BY: Z.B.		DRAWN BY: C.T.		REV: 9-16-13 J.L.G.	
01		11		11		13		REF2	
MONTH		DAY		YEAR		PHOTO			