

**GREAT WESTERN OIL & GAS COMPANY**  
**SPAUR BROTHERS EH #31-262HN, #31-259HC, #31-222HN & #31-219HN**  
**LOCATED IN WELD COUNTY, COLORADO**  
**SECTION 31, T7N, R63W, 6th P.M.**



**PHOTO: VIEW FROM CORNER #5 TO LOCATION STAKES**

**CAMERA ANGLE: WESTERLY**



**PHOTO: VIEW FROM BEGINNING OF PROPOSED ACCESS**

**CAMERA ANGLE: WESTERLY**



**UELS**

Uintah Engineering & Land Surveying  
85 South 200 East Vernal, Utah 84078  
(435) 789-1017 \* FAX (435) 789-1813

**LOCATION PHOTOS**

**01 11 13**  
MONTH DAY YEAR

**PHOTO  
P1**

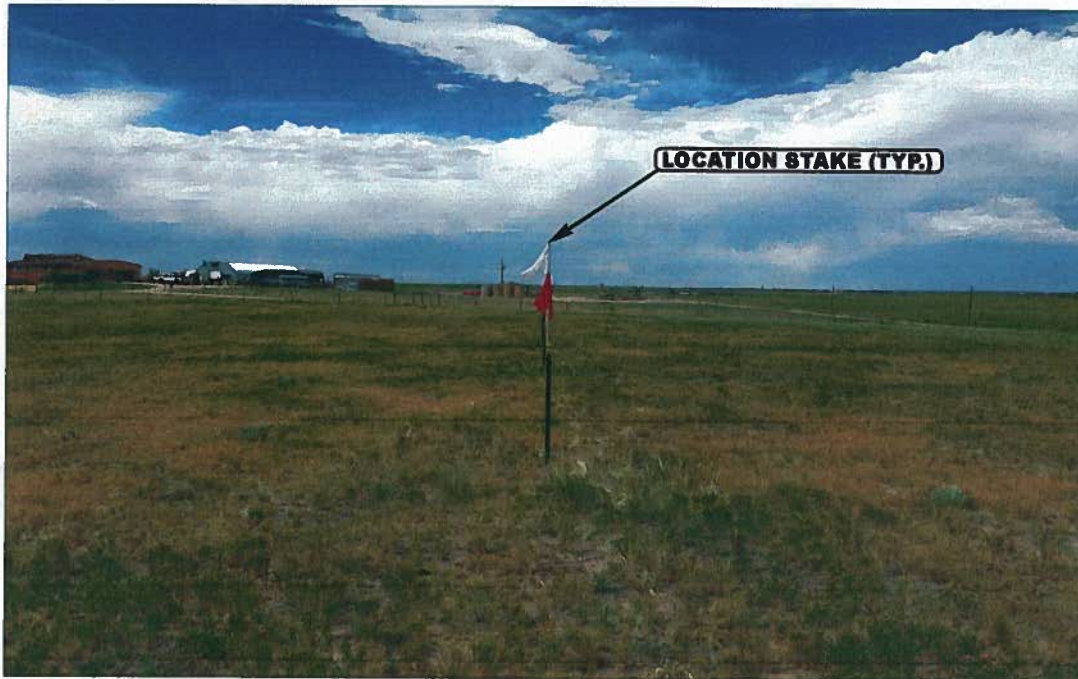
**TAKEN BY: Z.B.**

**DRAWN BY: C.L.**

**REV: 9-16-13 J.L.G.**

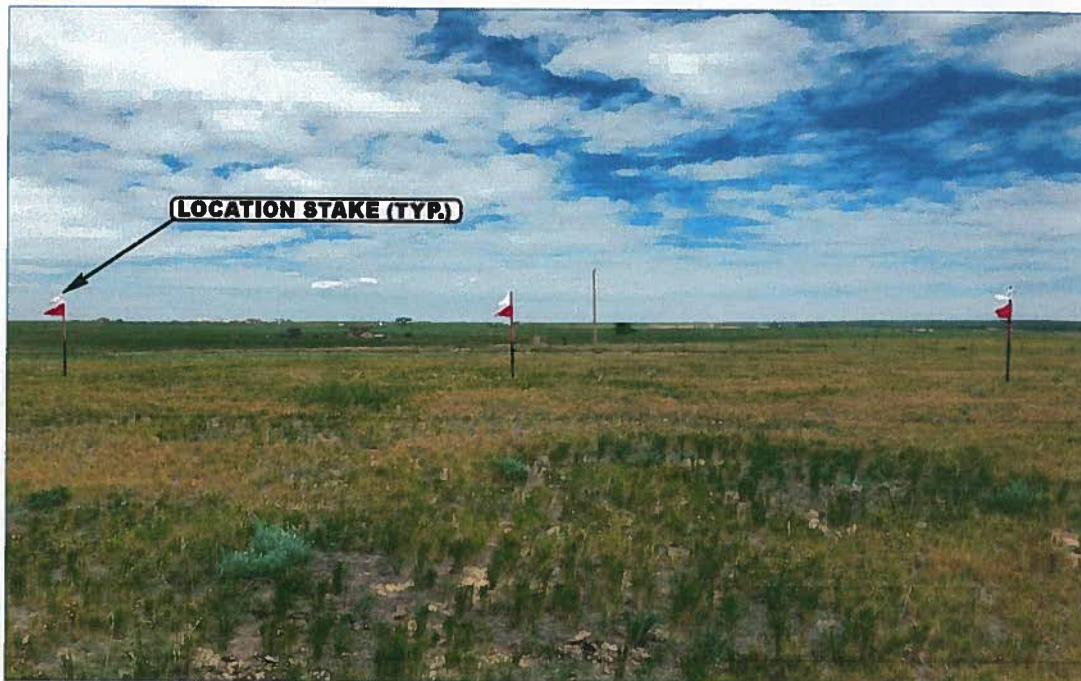


**GREAT WESTERN OIL & GAS COMPANY**  
**SPAUR BROTHERS EH #31-262HN, #31-259HC, #31-222HN & #31-219HN**  
**LOCATED IN WELD COUNTY, COLORADO**  
**SECTION 31, T7N, R63W, 6th P.M.**



**PHOTO: VIEW OF LOCATION STAKES**

**CAMERA ANGLE: NORTHERLY**



**PHOTO: VIEW OF LOCATION STAKES**

**CAMERA ANGLE: EASTERLY**



**UELS**

Uintah Engineering & Land Surveying  
85 South 200 East Vernal, Utah 84078  
(435) 789-1017 \* FAX (435) 789-1813

**LOCATION PHOTOS**

**01** **11** **13**  
MONTH DAY YEAR

**TAKEN BY: Z.B.**

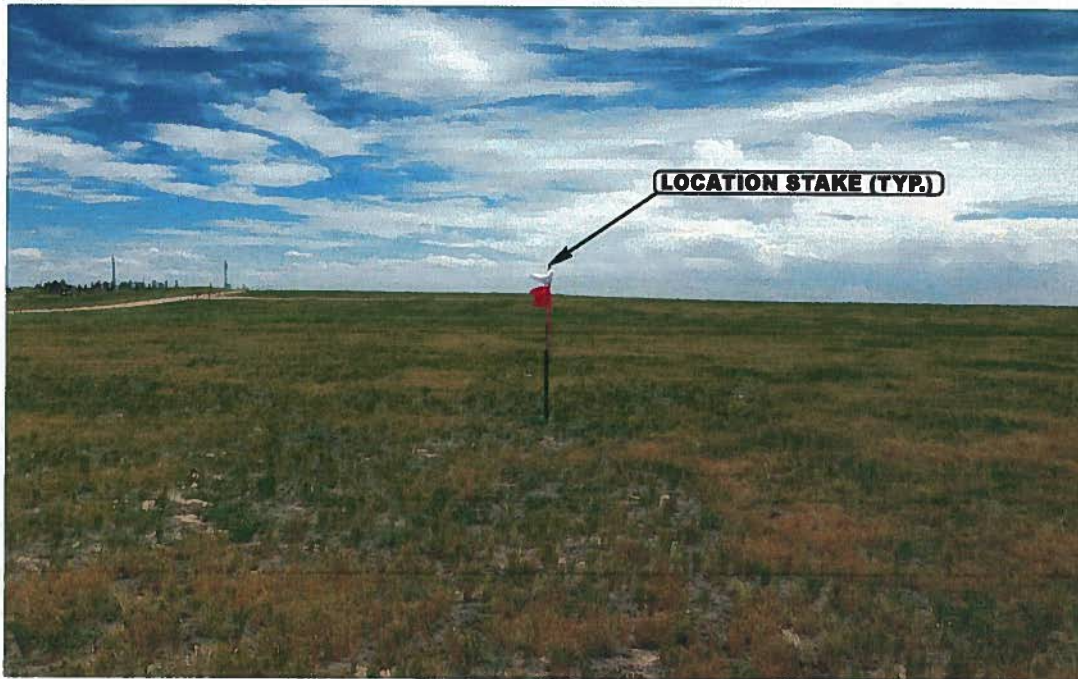
**DRAWN BY: C.L.**

**REV: 9-16-13 J.L.G.**

**PHOTO**  
**P2**

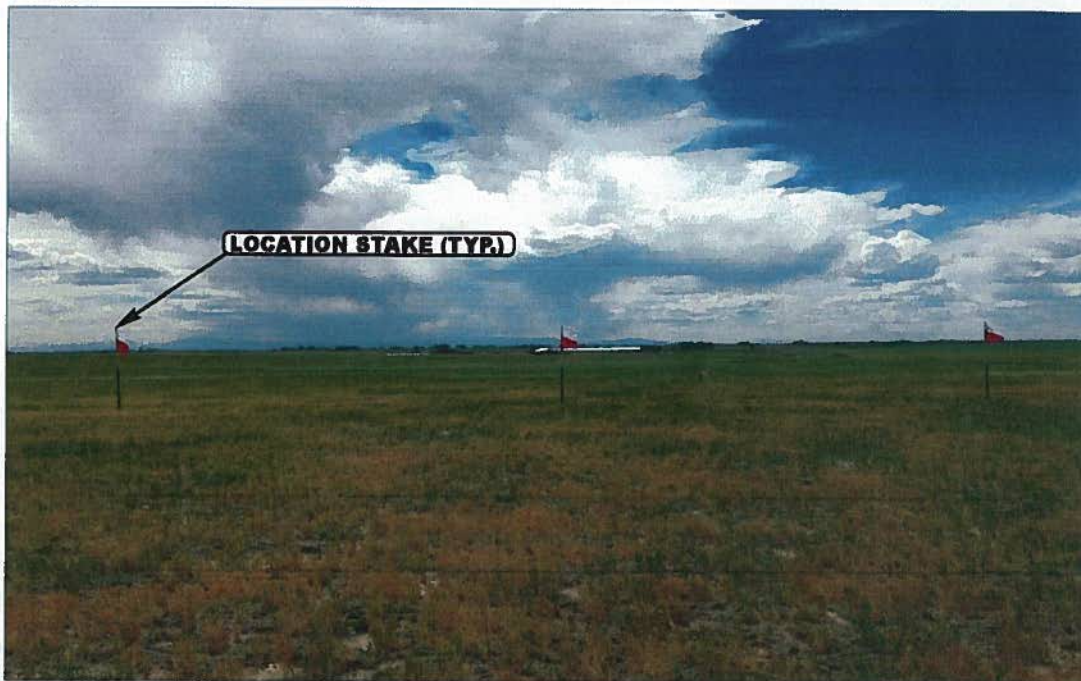


**GREAT WESTERN OIL & GAS COMPANY**  
**SPAUR BROTHERS EH #31-262HN, #31-259HC, #31-222HN & #31-219HN**  
**LOCATED IN WELD COUNTY, COLORADO**  
**SECTION 31, T7N, R63W, 6th P.M.**



**PHOTO: VIEW OF LOCATION STAKES**

**CAMERA ANGLE: SOUTHERLY**



**PHOTO: VIEW OF LOCATION STAKES**

**CAMERA ANGLE: WESTERLY**



**UELS**

Uintah Engineering & Land Surveying  
85 South 200 East Vernal, Utah 84078  
(435) 789-1017 \* FAX (435) 789-1813

**LOCATION PHOTOS**

**01** **11** **13**  
MONTH DAY YEAR

**TAKEN BY: Z.B.**

**DRAWN BY: C.L.**

**REV: 9-16-13 J.L.G.**

**PHOTO**  
**P3**