

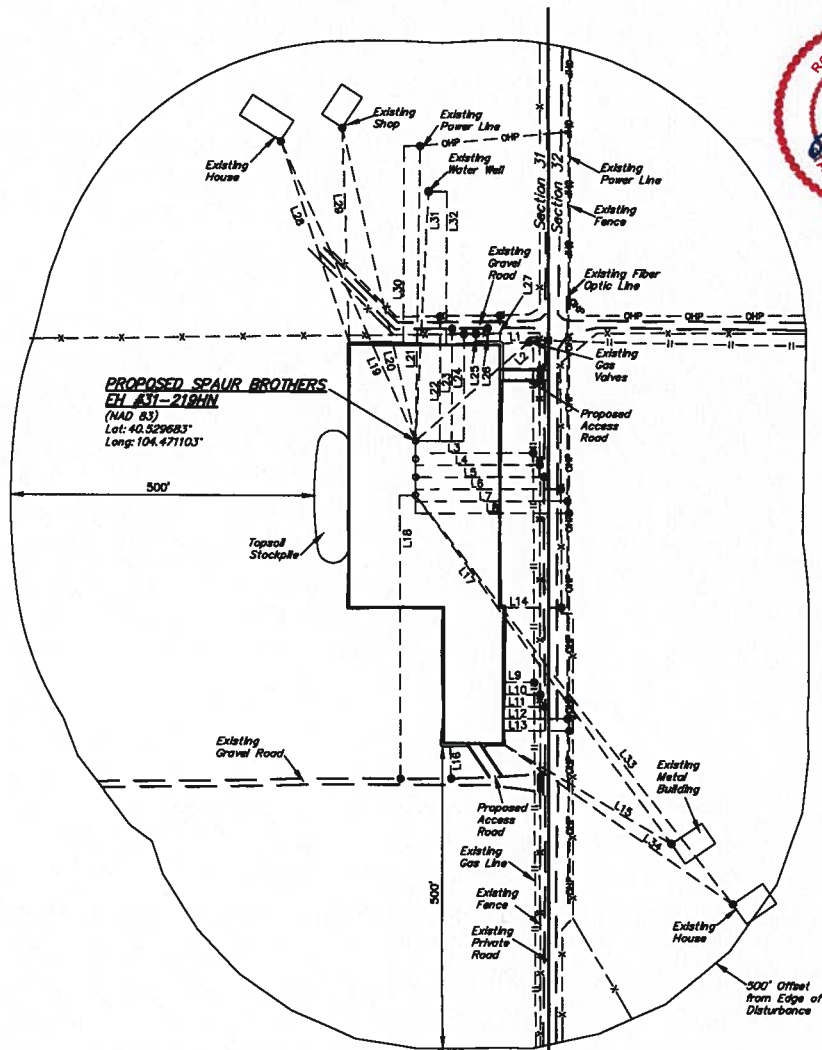
GREAT WESTERN OIL & GAS COMPANY

LOCATION DRAWING FOR

SPAUR BROTHERS EH #31-262HN,
#31-259HC, #31-222HN & #31-219HN
SECTION 31, T7N, R63W, 6th P.M.
NE 1/4 SE 1/4

FIGURE #5

SCALE: 1" = 200'
DATE SURVEYED: 01-09-13
SURVEYED BY: ZANE BULLARD
DATE DRAWN: 01-09-13
DRAWN BY: H.K.W.
REV: 06-12-13 J.W.
REV: 09-14-13 H.K.W.



LINE TABLE		
LINE	DIRECTION	LENGTH
L1	N88°E	44'
L2	N49°E	251'
L3	EAST	196'
L4	EAST	207'
L5	EAST	214'
L6	EAST	242'
L7	EAST	252'
L8	EAST	255'
L9	EAST	49'
L10	EAST	58'
L11	EAST	67'

LINE TABLE		
LINE	DIRECTION	LENGTH
L12	EAST	104'
L13	EAST	107'
L14	EAST	92'
L15	S60°E	321'
L16	S02°E	53'
L17	S37°E	715'
L18	SOUTH	468'
L19	N24°W	545'
L20	N13°W	534'
L21	N01°E	490'
L22	NORTH	207'
L23	NORTH	187'
L24	NORTH	178'
L25	NORTH	12'
L26	NORTH	22'
L27	NORTH	43'
L28	N19°W	352'
L29	N02°W	208'
L30	NORTH	326'
L31	N03°E	414'
L32	NORTH	253'
L33	S38°E	856'
L34	S55°E	459'