

GREAT WESTERN OIL & GAS COMPANY

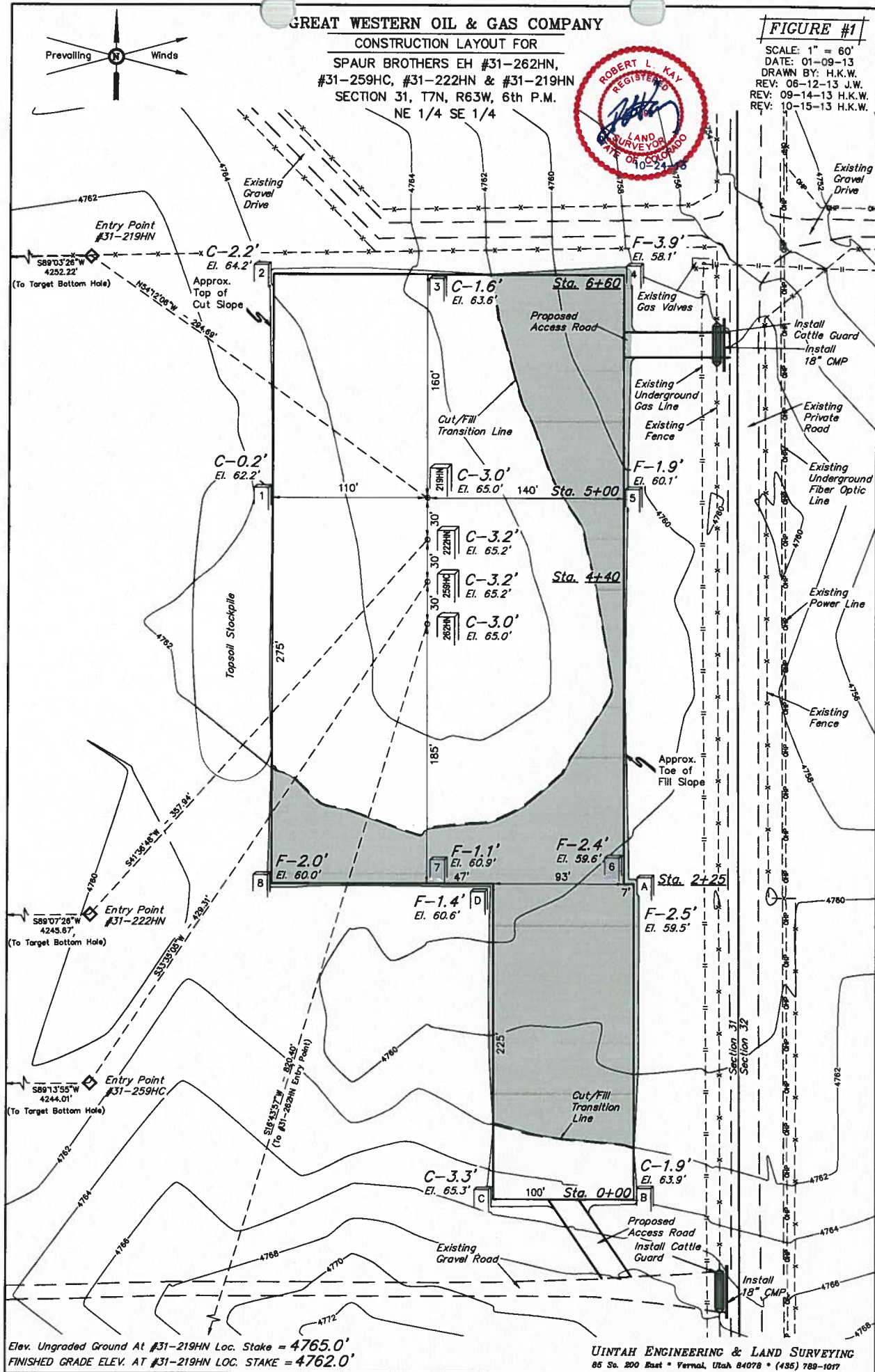
CONSTRUCTION LAYOUT FOR

SPAUR BROTHERS EH #31-262HN,
#31-259HC, #31-222HN & #31-219HN
SECTION 31, T7N, R63W, 6th P.M.
NE 1/4 SE 1/4



FIGURE #1

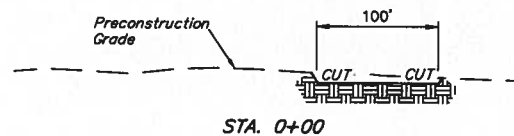
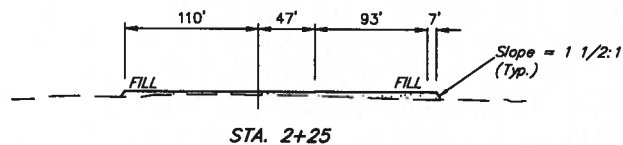
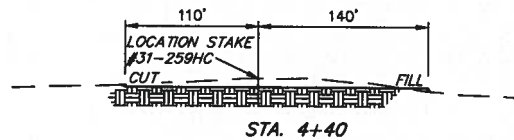
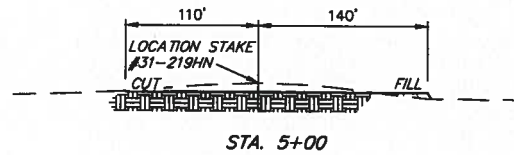
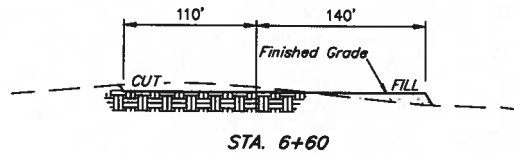
SCALE: 1" = 60'
DATE: 01-09-13
DRAWN BY: H.K.W.
REV: 08-12-13 J.W.
REV: 09-14-13 H.K.W.
REV: 10-15-13 H.K.W.



X-Section
 Scale
 1" = 100'
 DATE: 01-09-13
 DRAWN BY: H.K.W.
 REV: 06-12-13 J.W.
 REV: 09-14-13 H.K.W.

GREAT WESTERN OIL & GAS COMPANY
 CONSTRUCTION LAYOUT CROSS SECTIONS FOR
 SPAUR BROTHERS EH #31-262HN,
 #31-259HC, #31-222HN & #31-219HN
 SECTION 31, T7N, R63W, 6th P.M.
 NE 1/4 SE 1/4

FIGURE #2



NOTE:
 Topsoil should not be
 Stripped Below Finished
 Grade on Substructure Area.

* NOTE:
 FILL QUANTITY INCLUDES
 5% FOR COMPACTION

APPROXIMATE ACREAGE
 WELL SITE DISTURBANCE = ± 3.373 ACRES
 ACCESS ROAD DISTURBANCE = ± 0.106 ACRES
 TOTAL = ± 3.479 ACRES

APPROXIMATE YARDAGES

(6") Topsoil Stripping = 2,520 Cu. Yds.
 Remaining Location = 3,890 Cu. Yds.
 TOTAL CUT = 6,410 CU. YDS.
 FILL = 3,890 CU. YDS.

EXCESS MATERIAL = 2,520 Cu. Yds.
 Topsoil = 2,520 Cu. Yds.
 EXCESS UNBALANCE = 0 Cu. Yds.
 (After Interim Rehabilitation)

UTAH ENGINEERING & LAND SURVEYING
 85 So. 200 East • Vernal, Utah 84078 • (435) 789-1077

[illegible]

**JAMES G MOORE &
CANDANCE D
PERMIT #209267-
DEPTH TO BOTTOM 290'**

31

32

74

T7N
T6N

EXISTING DRAINAGE
1000' OFFSET BOUNDARY
WATER WELL

**SPUR BROTHERS EH #31-262HN, #31-259HC,
#31-222HN & #31-219HN
SECTION 31, T7N, R63W, 6th P.M.
NE 1/4 SE 1/4**

Utah Engineering & Land Surveying
85 South 200 East Vernal, Utah 84078
(435) 789-1017 * FAX (435) 789-1813

01 11 13
MONTH DAY YEAR

SCALE: 1" = 1000' **DRAWN BY: C.L** **REV:09-16-13J.L.G**

