

LEGEND:

● PROPOSED LOCATION

N

GREAT WESTERN OIL & GAS COMPANY

SPAUR BROTHERS EH #31-262HN, #31-259HC,
#31-222HN & #31-219HN
SECTION 31, T7N, R63W, 6th P.M.
NE 1/4 SE 1/4



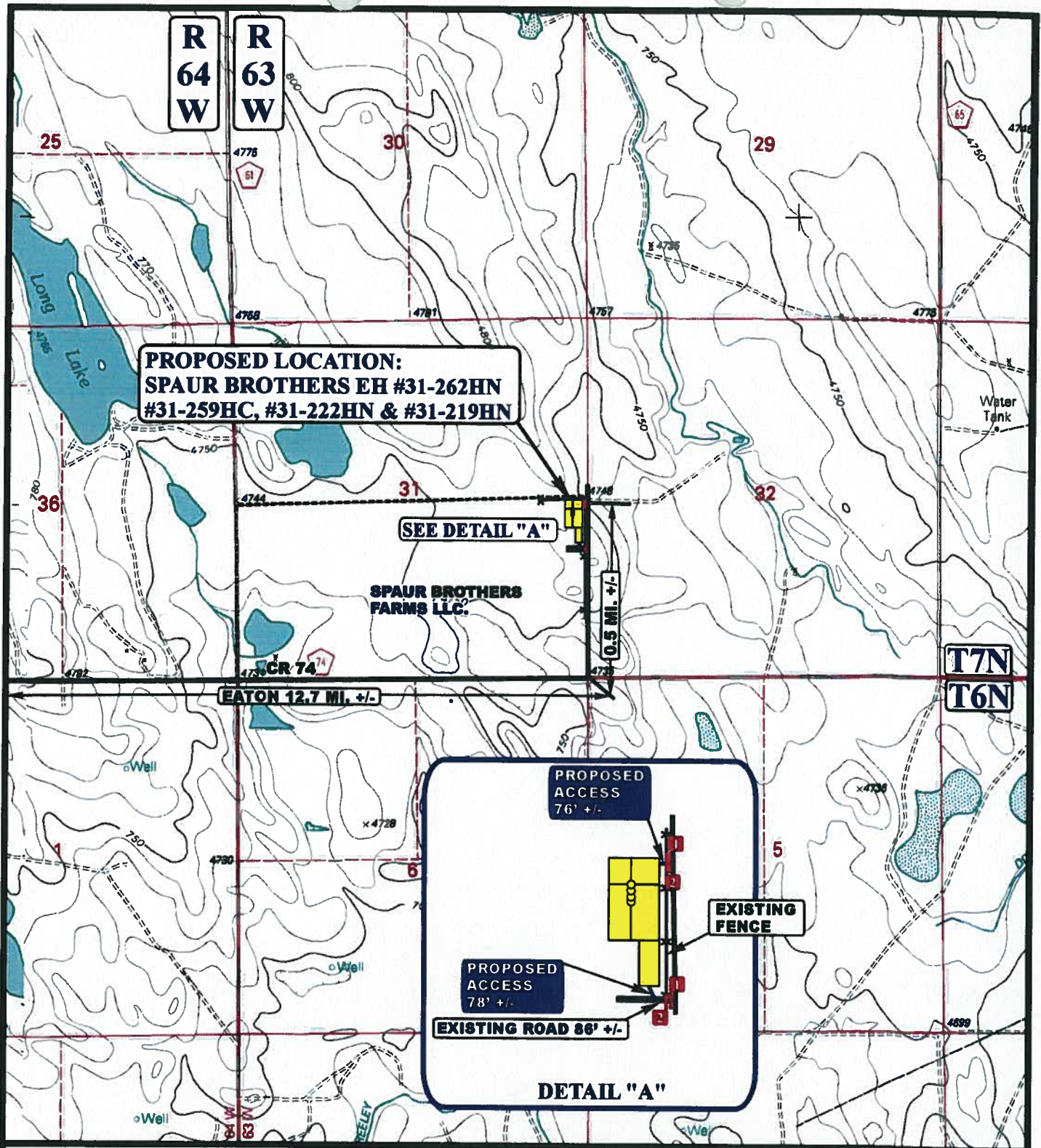
Uintah Engineering & Land Surveying
85 South 200 East Vernal, Utah 84078
(435) 789-1017 * FAX (435) 789-1813

**ACCESS ROAD
MAP**

01 11 13
MONTH DAY YEAR

A
TOPO

SCALE: 1:100,000 DRAWN BY: C.L. REV:09-16-13J.L.G.



LEGEND:

- EXISTING ROAD
- - - - - PROPOSED ACCESS ROAD
- EXISTING PIPELINE
- EXISTING FENCE
- 18" CMP REQUIRED
- INSTALL CATTLE GAURD



Utah Engineering & Land Surveying
 85 South 200 East Vernal, Utah 84078
 (435) 789-1017 * FAX (435) 789-1813



GREAT WESTERN OIL & GAS COMPANY

SPAUR BROTHERS EH #31-262HN, #31-259HC,
#31-222HN & #31-219HN
SECTION 31, T7N, R63W, 6th P.M.
NE 1/4 SE 1/4

ACCESS ROAD
MAP

01 11 13
 MONTH DAY YEAR

B
 TOPO

SCALE: 1" = 2000'

DRAWN BY: C.L.

REV: 09-16-13 J.L.G.